



StoragePoint 6.5

IBM Tivoli Adapter Guide



© 2026 Quest Software Inc. ALL RIGHTS RESERVED.

This guide contains proprietary information protected by copyright. The software described in this guide is furnished under a software license or nondisclosure agreement. This software may be used or copied only in accordance with the terms of the applicable agreement. No part of this guide may be reproduced or transmitted in any form or by any means, electronic or mechanical, including photocopying and recording for any purpose other than the purchaser's personal use without the written permission of Quest Software Inc.

The information in this document is provided in connection with Quest Software products. No license, express or implied, by estoppel or otherwise, to any intellectual property right is granted by this document or in connection with the sale of Quest Software products. EXCEPT AS SET FORTH IN THE TERMS AND CONDITIONS AS SPECIFIED IN THE LICENSE AGREEMENT FOR THIS PRODUCT, QUEST SOFTWARE ASSUMES NO LIABILITY WHATSOEVER AND DISCLAIMS ANY EXPRESS, IMPLIED OR STATUTORY WARRANTY RELATING TO ITS PRODUCTS INCLUDING, BUT NOT LIMITED TO, THE IMPLIED WARRANTY OF MERCHANTABILITY, FITNESS FOR A PARTICULAR PURPOSE, OR NON-INFRINGEMENT. IN NO EVENT SHALL QUEST SOFTWARE BE LIABLE FOR ANY DIRECT, INDIRECT, CONSEQUENTIAL, PUNITIVE, SPECIAL OR INCIDENTAL DAMAGES (INCLUDING, WITHOUT LIMITATION, DAMAGES FOR LOSS OF PROFITS, BUSINESS INTERRUPTION OR LOSS OF INFORMATION) ARISING OUT OF THE USE OR INABILITY TO USE THIS DOCUMENT, EVEN IF QUEST SOFTWARE HAS BEEN ADVISED OF THE POSSIBILITY OF SUCH DAMAGES. Quest Software makes no representations or warranties with respect to the accuracy or completeness of the contents of this document and reserves the right to make changes to specifications and product descriptions at any time without notice. Quest Software does not make any commitment to update the information contained in this document.

If you have any questions regarding your potential use of this material, contact:

Quest Software Inc.
Attn: LEGAL Dept.
20 Enterprise, Suite 100
Aliso Viejo, CA 92656

Refer to our Web site (<https://www.quest.com>) for regional and international office information.


Patents


Quest Software is proud of our advanced technology. Patents and pending patents may apply to this product. For the most current information about applicable patents for this product, please visit our website at <https://www.quest.com/legal>.

Trademarks

Quest and the Quest logo are trademarks and registered trademarks of Quest Software Inc. and its affiliates. For a complete list of Quest marks, visit <https://www.quest.com/legal/trademark-information.aspx>. All other trademarks and registered trademarks are property of their respective owners.

Legend

 **CAUTION:** A caution icon indicates potential damage to hardware or loss of data if instructions are not followed.

 **IMPORTANT, NOTE, TIP, MOBILE OR VIDEO:** An information icon indicates supporting information.

Quest® StoragePoint

Updated January 2026

Contents

Tivoli Adapter Configuration	4
Tivoli Connection String Parameters	4
Example Storage Endpoint Using Tivoli	7
Installing the Tivoli Client	8
Uninstalling the Tivoli Client	13
Appendix: Troubleshooting	15
Problem: Receiving errors on storage or retrieval of externalized content.	15
Problem: Content won't migrate between nodes.	15
Tips for Configuring Tivoli	16
Location of Content on Tivoli	16
Tivoli Management Class	16
About Us	18
Contacting Quest	18
Technical Support Resources	18

Tivoli Adapter Configuration

i | **NOTE:** Support for the IBM Tivoli Adapter will be deprecated from StoragePoint 6.4. The adapter will then be removed from the next StoragePoint release.

This section will provide you with details on how to configure a storage endpoint's connection string to utilize the IBM Tivoli Adapter. Please refer to the StoragePoint Reference Guide for information on managing Storage Endpoints.

On the ApplicationManagement page, click *Storage and Backup Endpoints*.

Click *Create New Endpoint* or click the name of an existing storage endpoint that you want to edit.

Tivoli Connection String Parameters

Setting	Value/Options
Name	Enter the unique name of the Storage or Backup Endpoint.
Type	<p>Type</p> <p><input checked="" type="radio"/> Primary <input type="radio"/> Backup</p> <p><i>Primary</i>– this endpoint will be available for externalization when creating storage profiles.</p>

Setting
Value/Options

Backup– this endpoint will be in the Backup Services dropdown on the profile page.

The selection is locked down when saving.

See Backup Services Settings in the Reference Guide for more information on how Backup Endpoints are used.

Status



A screenshot of a web form showing a dropdown menu labeled 'Status'. The dropdown is open, and 'Online' is selected. The dropdown is set against a light gray background.

Online– Storage Endpoint should be available to associate to a Storage Profile and accept BLOBs. (default)

Offline (Read Only)– A storage endpoint can be configured, but not made available for externalizing content. The BLOBs already on the endpoint are still read only.

Adapter



A screenshot of a web form showing a dropdown menu labeled 'Adapter'. The dropdown is open, and 'IBM Tivoli' is selected. There is a blue question mark icon to the right of the dropdown. The dropdown is set against a light gray background.

Select the adapter for the endpoint that is being created.

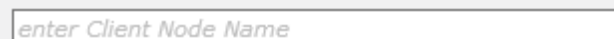
Client Base URL



A screenshot of a web form showing an input field for 'Client Base URL'. The field contains the placeholder text 'Enter URL to connect to the Tivoli Client Web Service'.

IP or DNS name chosen at the time the storage solution was provisioned which represents the Tivoli client access point. The Tivoli Client uses port 8190. This port needs to be opened (inbound rule on the client machine) to communicate with SharePoint.

Client Node



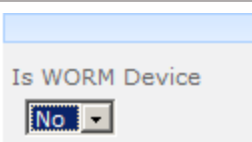
A screenshot of a web form showing an input field for 'Client Node'. The field contains the placeholder text 'enter Client Node Name'.

Client Node Password



A screenshot of a web form showing an input field for 'Client Node Password'. The field contains the placeholder text 'Enter Client Node Password'.

Enter the connection information for accessing the Tivoli node.



A screenshot of a web form showing a dropdown menu labeled 'Is WORM Device'. The dropdown is open, and 'No' is selected. The dropdown is set against a light gray background.

If the endpoint is on a WORM (Write Once, Read Many) device, Unused BLOB Cleanup will ignore this

Setting
Value/Options

endpoint.

Folder Content in BLOB Store

Yes ▾

Folder Scheme

YYYY/MM/DD/HH/MM ▾

No– Externalized content BLOBs are not placed in folders (default).

Yes– Externalized content BLOBs are placed in folders.

If *Folder Content in BLOB Store* is *Yes* then you can select a date/time folder scheme from the dropdown.

YYYY/MM/DD/HH/MM is the default.

Test Storage Settings

The Test Storage Settings button can be used at this point, or after completing the endpoint configuration, to verify that the endpoint is accessible.

Compress Content in BLOB Store

No ▾

Content is compressed using the GZip/Deflate method.

No– Externalized content BLOBs are not compressed (default).

Encryption Method for Content in BLOB Store

None ▾

None– Encryption will not be applied to externalized BLOBs (default).

AES (128 bit)– 128 bit AES encryption will be applied to externalized BLOBs.

AES (256 bit)– 256 bit AES encryption will be applied to externalized BLOBs.

Encryption Key Passphrase

Generate Key

*Enter a passphrase to be used to generate a key or leave blank to generate a random key. The pass phrase entered is **not** saved with the Endpoint.*

Enter a passphrase to use when generating the encryption key. Using a passphrase will help you re-create the encryption key if necessary. You can generate a random key by leaving the box blank and clicking the *Generate Key* button. The encryption key passphrase will be hidden.

Setting Value/Options	
<p>Generate warning notification if:</p> <p><input checked="" type="checkbox"/> 10 or more successive errors are encountered</p> <p><input checked="" type="checkbox"/> there is less than 10 <input checked="" type="radio"/> MB <input type="radio"/> % of free space</p>	<p>A warning email can be sent if it encounters errors.</p>
<p>Automatically take endpoint offline if:</p> <p><input checked="" type="checkbox"/> 25 or more successive errors are encountered</p> <p><input checked="" type="checkbox"/> there is less than 1 <input checked="" type="radio"/> MB <input type="radio"/> % of free space</p>	<p>An online storage endpoint can be automatically taken offline if it encounters errors. If a storage endpoint is taken offline automatically, BLOBs that were intended to be written to that endpoint will go to the content database.</p>
<p>Send Offline Notifications to:</p> <p><input checked="" type="checkbox"/> Use Notification Defaults</p> <p>Additional Contacts</p> <p>admin@company.com</p> <p><i>Provide a semi-colon delimited list of e-mail addresses.</i></p>	<p>Default email addresses for system error and offline notification can be entered. Check the box to include the list of Default Notification Contacts specified on the General Settings page.</p>

Example Storage Endpoint Using Tivoli

Adapter

IBM Tivoli ?

Adapter Settings Show Connection String

Client Base URL

http://225.225.25.25:8190/TivoliREST

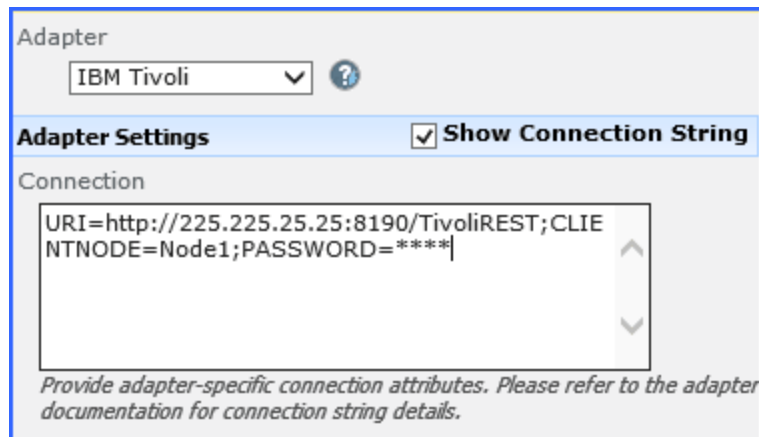
Client Node

Node1 x

Client Node Password

••••

Click the *Show Connection String* checkbox to edit the connection string. Otherwise, fill in the connection fields shown for the adapter selected. Notice that the connection string parameters are name/value pairs separated by semi-colons when editing using the Show Connection String option.



Adapter

IBM Tivoli

Adapter Settings **Show Connection String**

Connection

```
URI=http://225.225.25.25:8190/TivoliREST;CLIE
NTNODE=Node1;PASSWORD=****
```

Provide adapter-specific connection attributes. Please refer to the adapter documentation for connection string details.

i | **NOTE:** Adapter parameters are not case-sensitive.

i | **NOTE:** You should always use a passphrase when generating encryption keys. The passphrase gives you a means of re-creating keys should they become unrecoverable or corrupt. It is very important to remember or record the passphrase outside of StoragePoint. Otherwise, encrypted content could become irretrievable in the event of a database failure.

If you choose to externalize content you should test the storage profile settings by clicking the *Test Storage Settings* button. A message under the button will indicate whether or not the test was successful. If the test fails the message will include the error that was the root cause of the failure.

i | **NOTE:** When testing access to an endpoint from within Central Administration, the Identity of the Application Pool hosting the Central Administration Site is the one that is being used for the test. If there are different Identities used for other Web Applications in the Farm then those identities will also need access but cannot be tested from within Central Admin itself. See BLOB Store Security and StoragePoint Required Privileges in the StoragePoint Reference Guide.

Installing the Tivoli Client

Installing the Tivoli Client is critical for communication with the Tivoli node.

i | **NOTE:** There is a minimum version requirement of .NET 4.8 to install the Tivoli Client.


i | **NOTE:** If this is an upgrade, the old client must be [uninstalled](#) before continuing with the install.

1. Download the StoragePoint Tivoli Adapter Client from this [website](#), and copy it to the Tivoli Client machine.

StoragePoint Resources

Tools

Add-in

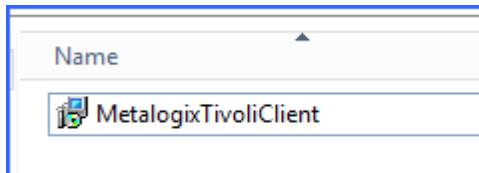


StoragePoint PowerShell Extension Library
for SharePoint 2007 and 2010

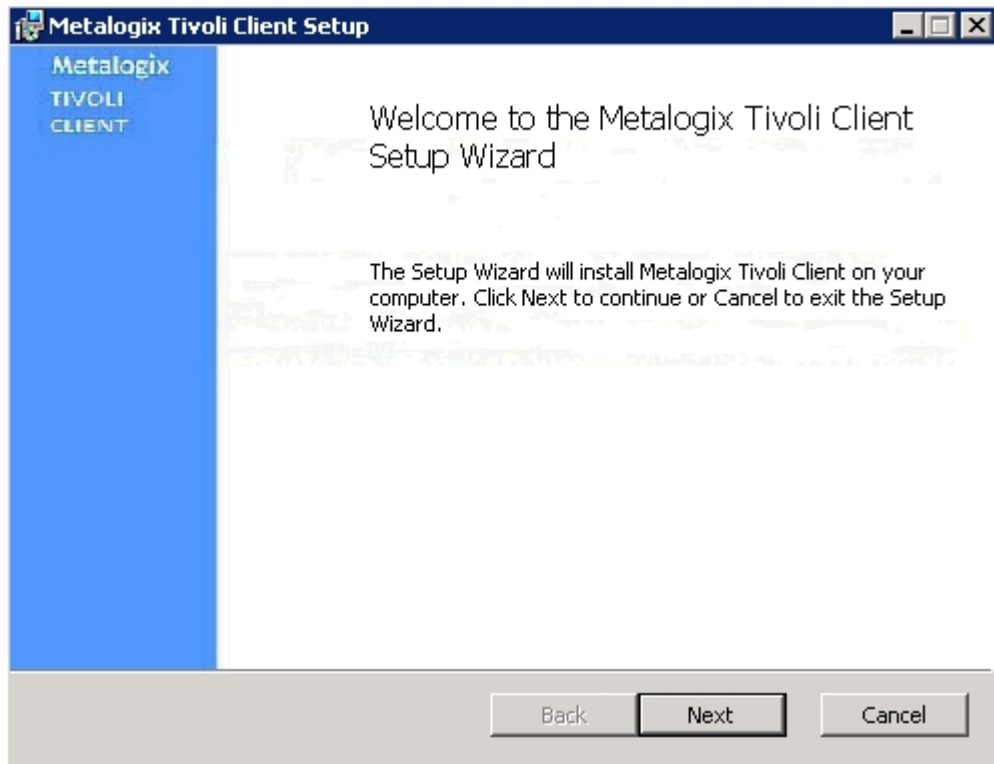


Metalogix StoragePoint Tivoli Adapter
Client

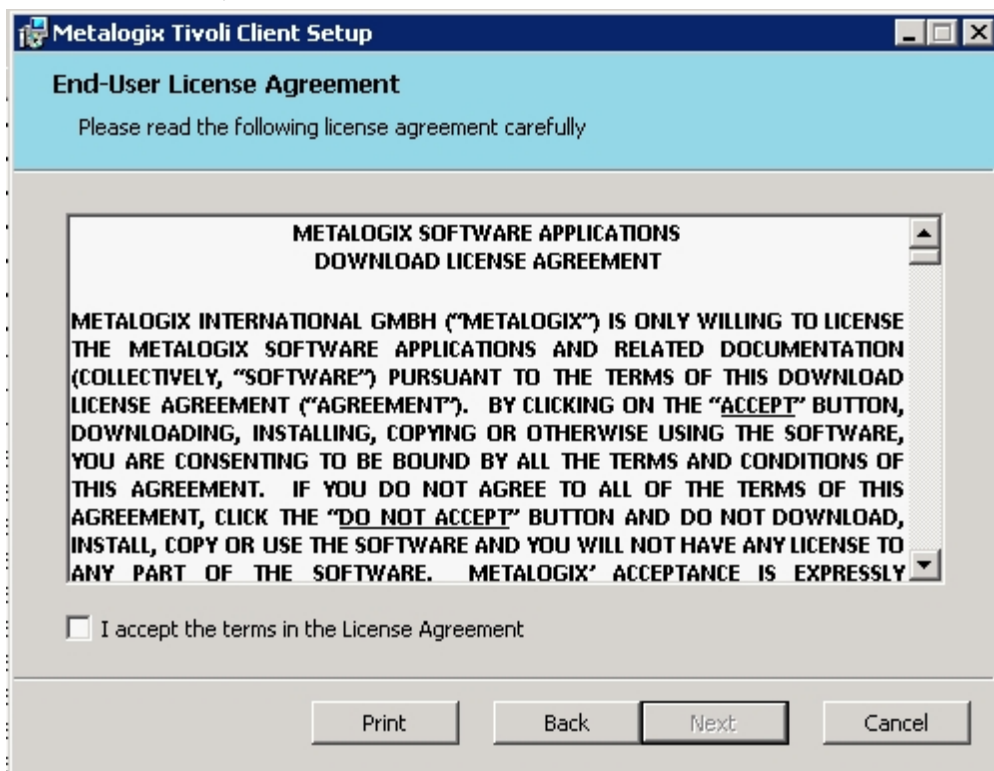
2. On the Tivoli client, unzip the file, and double click the executable.



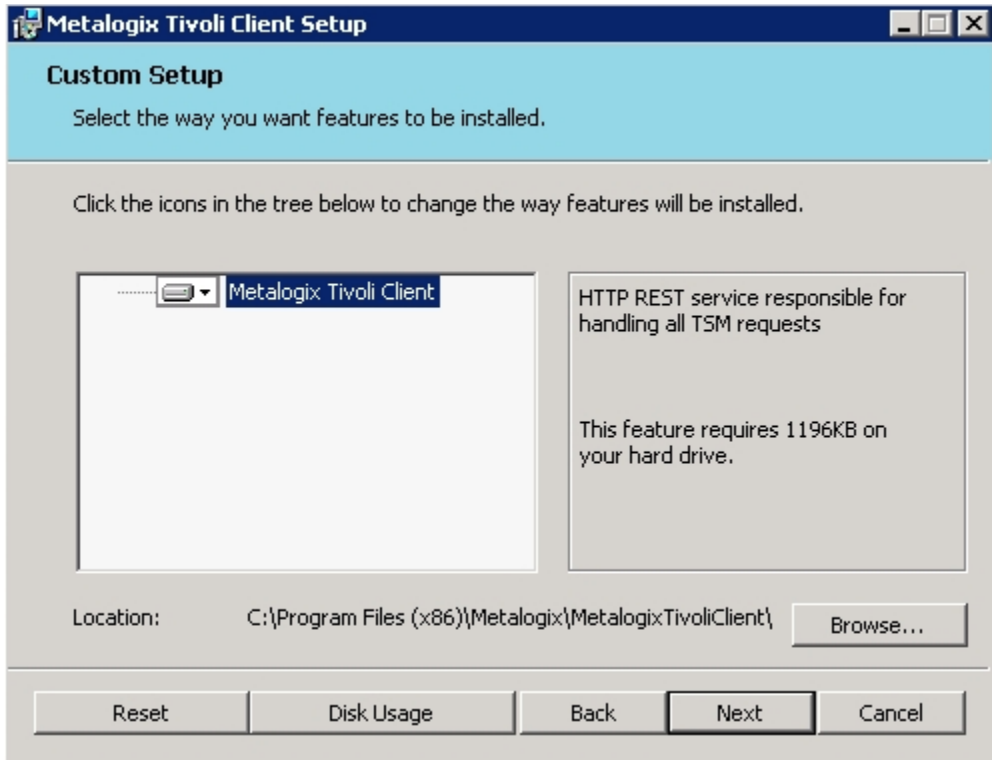
- When the App Setup window opens, click Next.



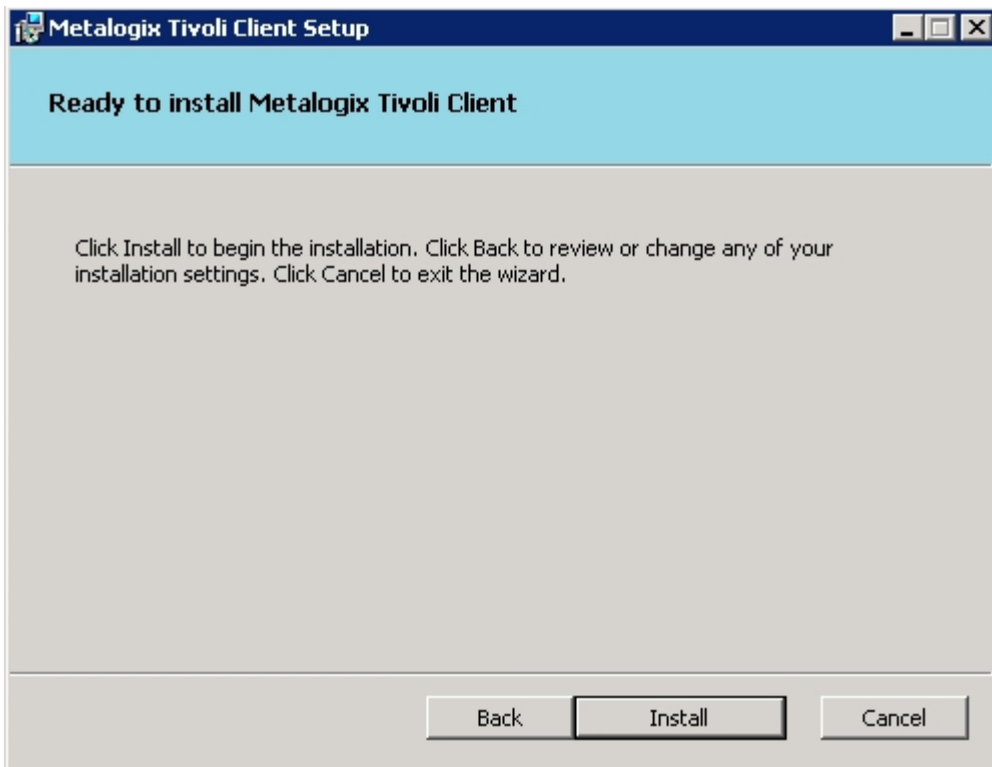
- Click the checkbox, and click Next.



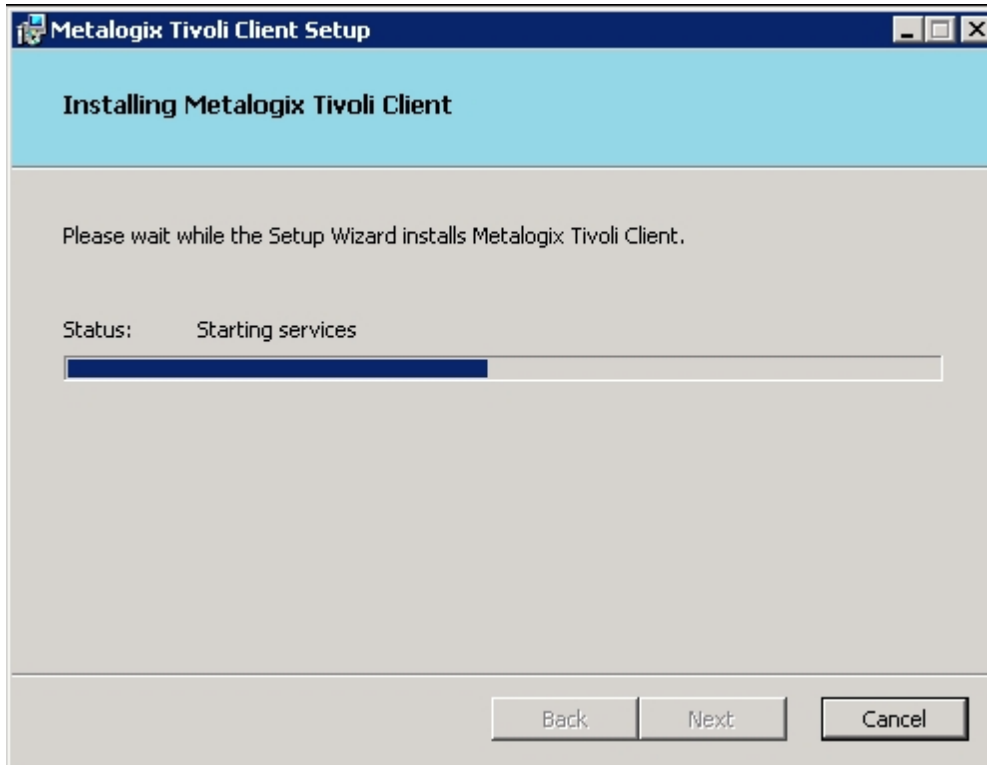
5. Click Next, or browse to a different location to install the service.



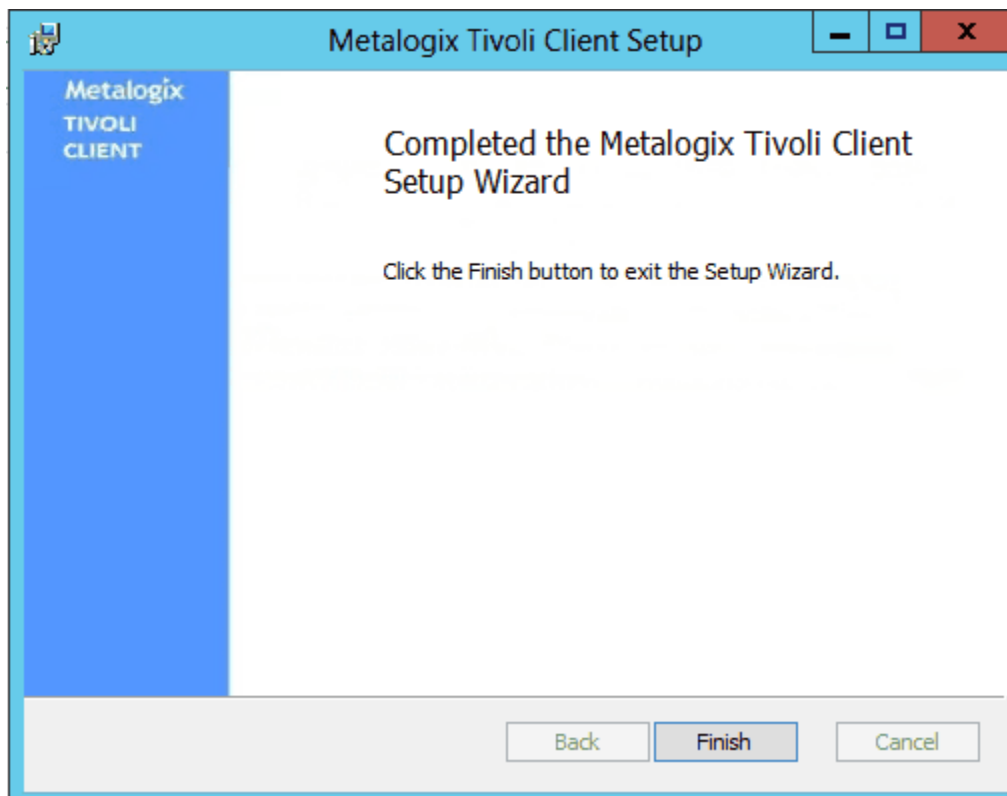
6. Click Install.



7. The window will refresh to show the progress.



8. Click Finish.



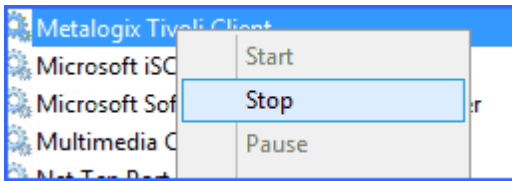
Confirmation

Open the services admin tool and make sure Tivoli Client is running.

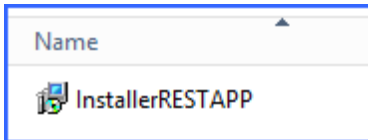
Local Session Manager	Core windo...	Running	Automatic
Metalogix Tivoli Client	HTTP RESTf...	Running	Automatic
Microsoft iSCSI Initiator Service	Manager In		Manual

Uninstalling the Tivoli Client

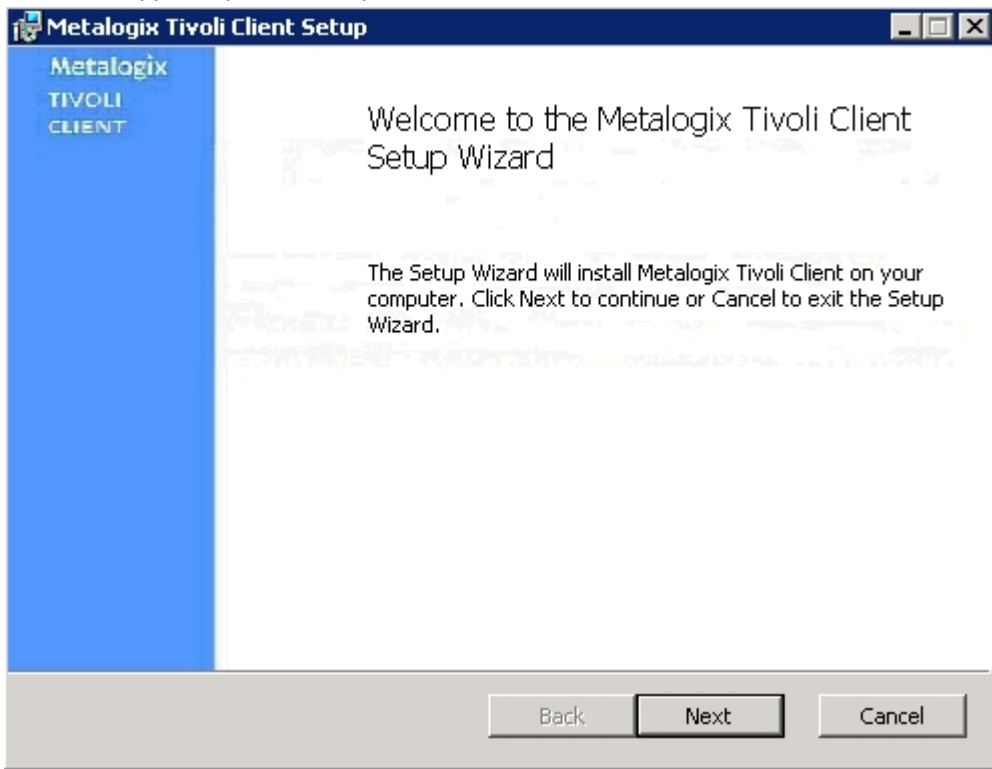
1. Stop the Tivoli Client in Services.



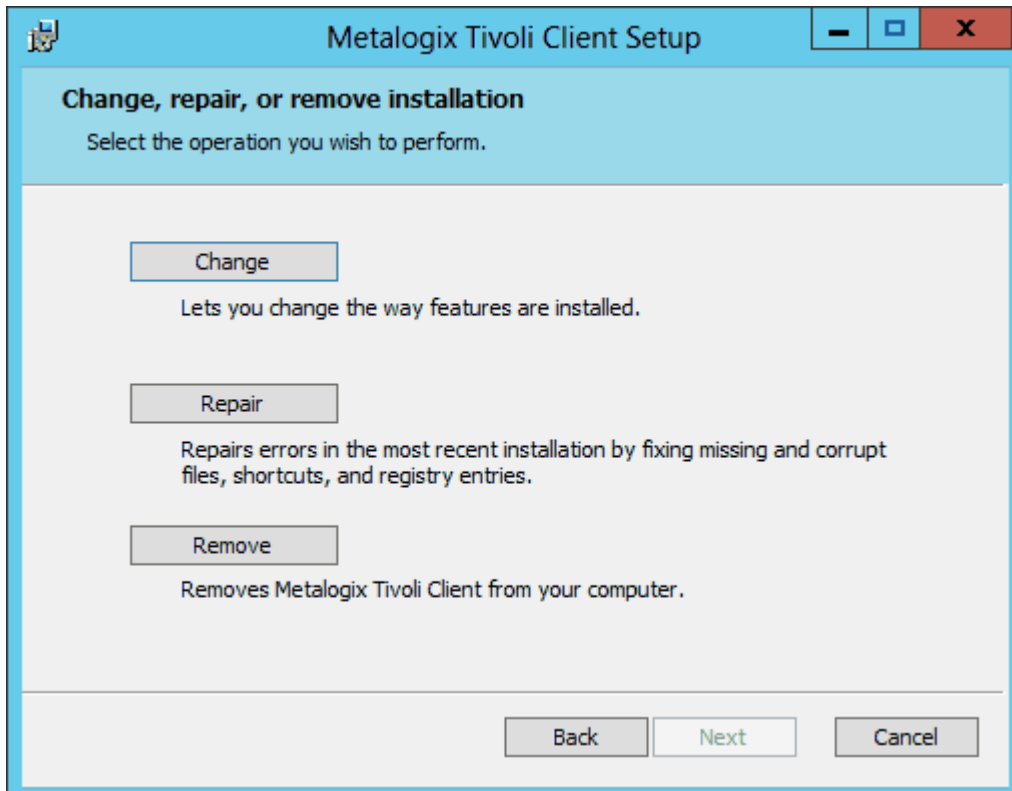
2. Double click the executable.



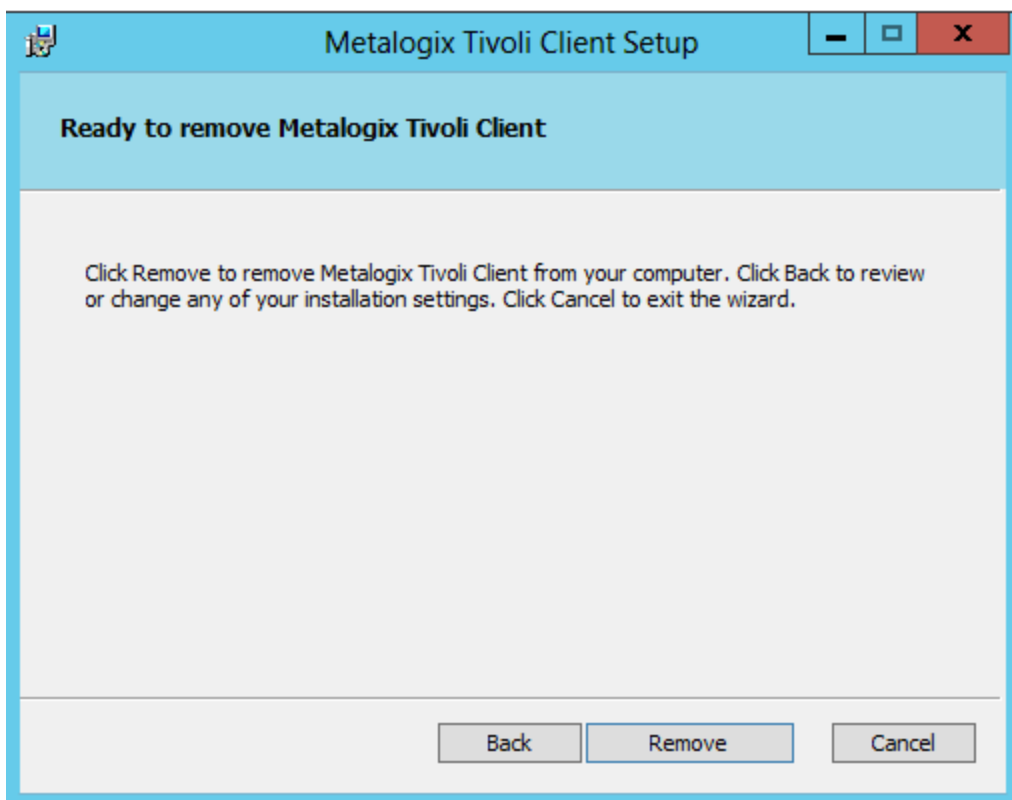
3. When the App Setup window opens, click Next.



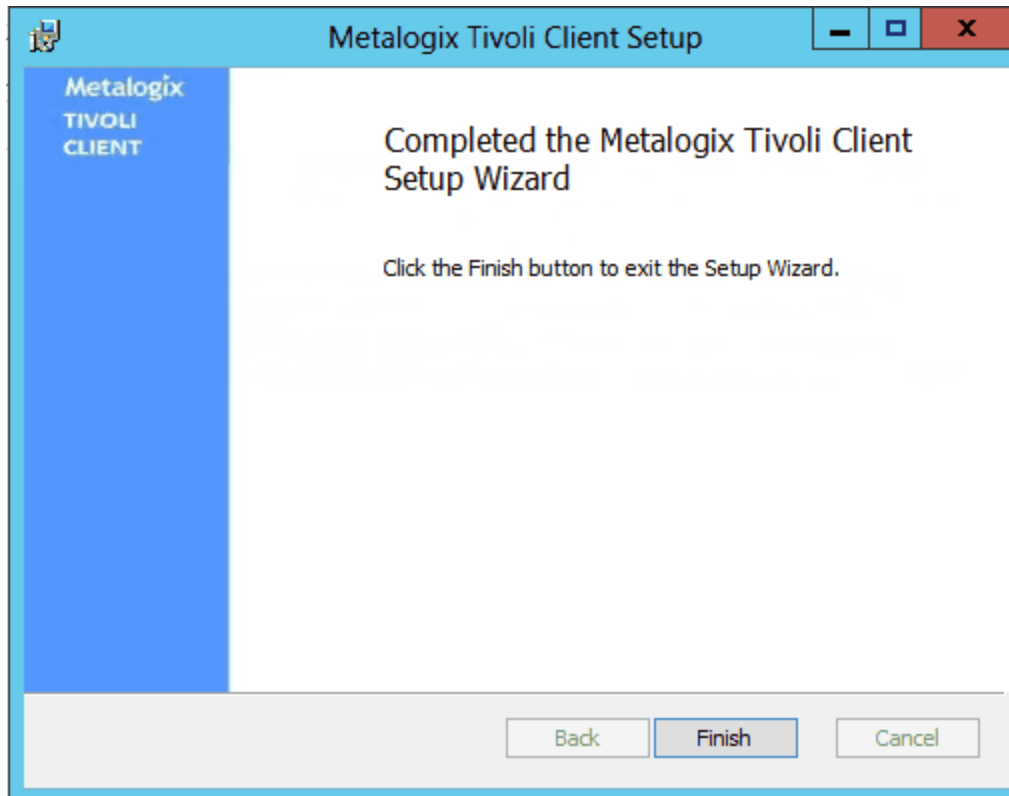
4. On the Change, repair or remove window, click Remove.



5. Click Remove.



6. Click Finish.



Appendix: Troubleshooting

Problem: Receiving errors on storage or retrieval of externalized content.

Wherever possible, StoragePoint surfaces error messages returned by the adapter either directly to the user or within the SharePoint ULS logs. You should refer to your storage platform/provider documentation for resolution to errors logged by the adapter.

Check to see that the TSM instance does not have Archive Data Retention Protection enabled. This will prevent the deletion of data on Tivoli, until the expiration date is reached. For more information please see this [link](#).

Problem: Content won't migrate between nodes.

If multiple Nodes are configured on the Tivoli Server Manager, Administrator privileges need to be shared among nodes.

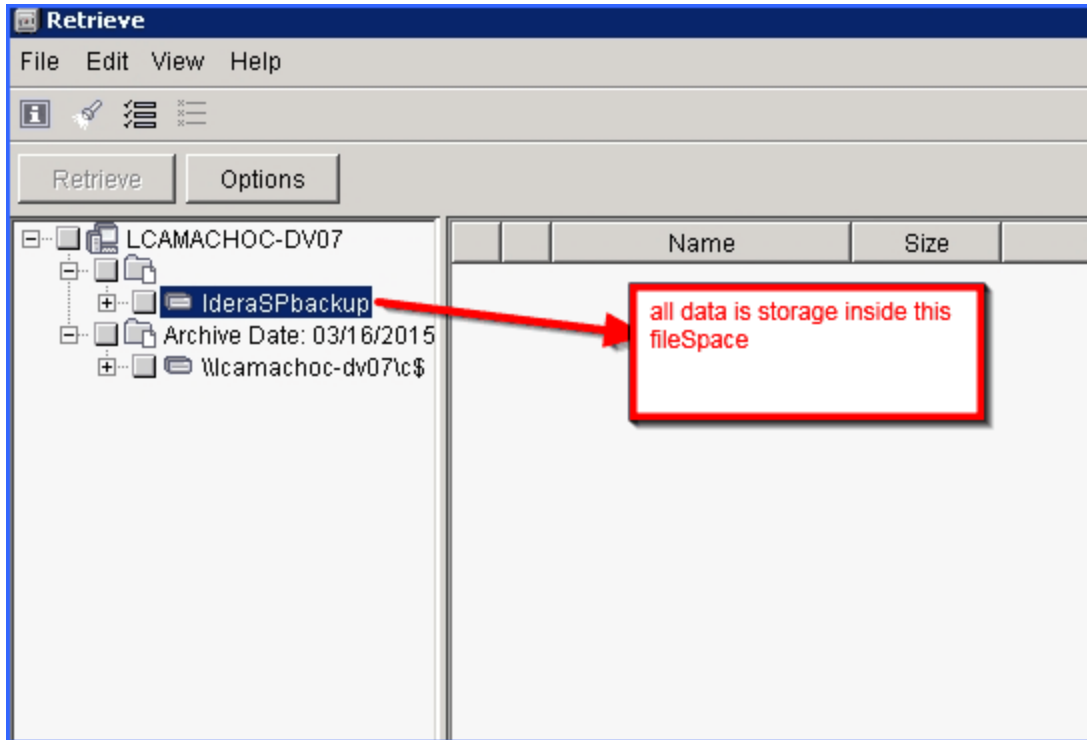
For more information and instructions, please see the following [link](#).

Tips for Configuring Tivoli

If the Tivoli license has expired, there may be errors trying to recall or migrate data from the Tivoli endpoint. Renew the license to correct these errors.

Location of Content on Tivoli

Within the Tivoli user interface, all content that is externalized by StoragePoint using the Tivoli endpoint adapter will be in a directory called IderaSPbackup.



Tivoli Management Class

The Retain Version parameter should be greater than the Unused BLOB Retention period set for the profile using the endpoint. See the section on Unused BLOB Retention in the StoragePoint Reference

Guide.

```
IBM Tivoli Storage Manager
MgmtClass Name      : STANDARD
Description         : Installed default management class.
Space Management Technique : None
Auto Migrate on Non-Usage : 0
Backup Required Before Migration : YES
Destination for Migrated Files : SPACEMGPOOL
Copy Group
  Copy Group Name.....: STANDARD
  Copy Type.....       : Backup
  Copy Frequency.....  : 0 day(s)
  Versions Data Exists...: 2 version(s)
  Versions Data Deleted..: 1 version(s)
  Retain Extra Versions...: 30 day(s)
  Retain Only Version....: 60 day(s)
  Copy Serialization....: Shared Static
  Copy Mode.....       : Modified
  Copy Destination..... : BACKUPPOOL
  Lan Free Destination...: NO
  Deduplicate Data..... : NO

  Copy Group Name.....: STANDARD
  Copy Type.....       : Archive
  Copy Frequency.....  : Cmd
  Retain Version.....  : 365 day(s)
  Copy Serialization....: shared static
  Copy Mode.....       : Absolute
  Retain Initiation.... : Create
  Retain Minimum.....  : 65534 day(s)
  Copy Destination..... : ARCHIVEPOOL
  Lan Free Destination...: NO
  Deduplicate Data..... : NO

tsn>
```

this value should be grather than Retain Unused BLOBs or Retain Backup For

About Us

Quest Software creates technology and solutions that build the foundation for enterprise AI. Focused on data management and governance, cybersecurity and platform modernization, Quest helps organizations address their most pressing challenges and make the promise of AI a reality. Around the globe, more than 45,000 companies including over 90% of the Fortune 500 count on Quest Software. For more information, visit www.quest.com or follow Quest Software on [X \(formerly Twitter\)](#) and [LinkedIn](#).

Contacting Quest

For sales or other inquiries, visit www.quest.com/contact.

Technical Support Resources

Technical support is available to Quest customers with a valid maintenance contract and customers who have trial versions. You can access the Quest Support Portal at <https://support.quest.com>

The Support Portal provides self-help tools you can use to solve problems quickly and independently, 24 hours a day, 365 days a year. The Support Portal enables you to:

- Submit and manage a Service Request
- View Knowledge Base articles
- Sign up for product notifications
- Download software and technical documentation
- View how-to-videos
- Engage in community discussions
- Chat with support engineers online
- View services to assist you with your product