

StoragePoint 6.5

Hitachi HCP or HCAP Adapter Guide



© 2026 Quest Software Inc. ALL RIGHTS RESERVED.

This guide contains proprietary information protected by copyright. The software described in this guide is furnished under a software license or nondisclosure agreement. This software may be used or copied only in accordance with the terms of the applicable agreement. No part of this guide may be reproduced or transmitted in any form or by any means, electronic or mechanical, including photocopying and recording for any purpose other than the purchaser's personal use without the written permission of Quest Software Inc.

The information in this document is provided in connection with Quest Software products. No license, express or implied, by estoppel or otherwise, to any intellectual property right is granted by this document or in connection with the sale of Quest Software products. EXCEPT AS SET FORTH IN THE TERMS AND CONDITIONS AS SPECIFIED IN THE LICENSE AGREEMENT FOR THIS PRODUCT, QUEST SOFTWARE ASSUMES NO LIABILITY WHATSOEVER AND DISCLAIMS ANY EXPRESS, IMPLIED OR STATUTORY WARRANTY RELATING TO ITS PRODUCTS INCLUDING, BUT NOT LIMITED TO, THE IMPLIED WARRANTY OF MERCHANTABILITY, FITNESS FOR A PARTICULAR PURPOSE, OR NON-INFRINGEMENT. IN NO EVENT SHALL QUEST SOFTWARE BE LIABLE FOR ANY DIRECT, INDIRECT, CONSEQUENTIAL, PUNITIVE, SPECIAL OR INCIDENTAL DAMAGES (INCLUDING, WITHOUT LIMITATION, DAMAGES FOR LOSS OF PROFITS, BUSINESS INTERRUPTION OR LOSS OF INFORMATION) ARISING OUT OF THE USE OR INABILITY TO USE THIS DOCUMENT, EVEN IF QUEST SOFTWARE HAS BEEN ADVISED OF THE POSSIBILITY OF SUCH DAMAGES. Quest Software makes no representations or warranties with respect to the accuracy or completeness of the contents of this document and reserves the right to make changes to specifications and product descriptions at any time without notice. Quest Software does not make any commitment to update the information contained in this document.

If you have any questions regarding your potential use of this material, contact:

Quest Software Inc.
Attn: LEGAL Dept.
20 Enterprise, Suite 100
Aliso Viejo, CA 92656

Refer to our Web site (<https://www.quest.com>) for regional and international office information.


Patents


Quest Software is proud of our advanced technology. Patents and pending patents may apply to this product. For the most current information about applicable patents for this product, please visit our website at <https://www.quest.com/legal>.

Trademarks

Quest and the Quest logo are trademarks and registered trademarks of Quest Software Inc. and its affiliates. For a complete list of Quest marks, visit <https://www.quest.com/legal/trademark-information.aspx>. All other trademarks and registered trademarks are property of their respective owners.

Legend

 **CAUTION:** A caution icon indicates potential damage to hardware or loss of data if instructions are not followed.

 **IMPORTANT, NOTE, TIP, MOBILE OR VIDEO:** An information icon indicates supporting information.

Quest® StoragePoint

Updated February 2026

Contents

HCAP Adapter Configuration	4
HCP/HCAP Adapter Connection String Parameters	7
Example Storage Endpoint using HCP or HCAP Adapter	12
VerifyWrites	13
Retention Promotion from IMP	13
Event Based Retention	14
Appendix: Troubleshooting	15
Problem: Receive an error message when testing a storage profile.	15
Problem: Receiving errors on storage or retrieval of externalized content.	15
Problem: Newly uploaded content is not being archived as expected.	15
About Us	16
Contacting Quest	16
Technical Support Resources	16

HCAP Adapter Configuration


This section will provide you with details on how to configure a storage endpoint's connection string to utilize the Hitachi Adapter. Please refer to the StoragePoint Reference Guide for information on managing Storage Endpoints.

StoragePoint supports HCAP 5.x, HCP 6.x, HCP 7.x and HCP 8.x versions of the platform.

On the Application Management page, click *Storage and Backup Endpoints*.

Click *Create New Endpoint* or click the name of an existing storage endpoint that you want to edit.

Select HCP or HCAP for legacy adapters. Click the *Show* link next to the Advanced Adapter Settings to see the additional fields.

Adapter
HcapRest 

Adapter Settings Show Connection String

Hitachi Platform
 HCP
 HCAP (legacy)

Host

Use SSL

User

Password

Advanced Adapter Settings *(Hide)*


Root

Strict SSL


Timeout (in seconds)

Verify Hash

Retry

Retention
 Delete Allowed
 Permanent
 Indefinite
 Date Format:

 Duration/Interval:

HCP-Specific
 Hold Index Shred

Adapter
HcapRest 

Adapter Settings Show Connection String

Hitachi Platform
 HCP
 HCAP (legacy)

Host

Use SSL

Advanced Adapter Settings *(Hide)*

Root


Strict SSL

Timeout (in seconds)

UID

Verify Hash

Retry

Retention
 Delete Allowed
 Permanent
 Indefinite
 Date Format:

 Duration/Interval:

HCP/HCAP Adapter Connection String Parameters

Setting Value/Options
<p>Name Enter the unique name of the Storage or Backup Endpoint.</p>
<p>Type</p> <p>Type</p> <p><input checked="" type="radio"/> Primary <input type="radio"/> Backup</p> <p><i>Primary</i>– this endpoint will be available for externalization when creating storage profiles.</p> <p><i>Backup</i>– this endpoint will be in the Backup Services dropdown on the profile page.</p> <p>The selection is locked down when saving.</p> <p>See Backup Services Settings in the Reference Guide for more information on how Backup Endpoints are used.</p>
<p>Status</p> <p>Status</p> <p>Online ▼</p> <p><i>Online</i>– Storage Endpoint should be available to associate to a Storage Profile and accept BLOBs. (default)</p> <p><i>Offline (Read Only)</i>– A storage endpoint can be configured but not made available for externalizing content. The BLOBs already on the endpoint are still read only.</p>
<p>Adapter</p> <p>HcapRest ▼ ⓘ</p> <p>Select the adapter for the endpoint that is being created.</p>
<p>Host</p> <p>enter hostname</p> <p>Fully qualified domain name that represents the HCP tenant namespace, or if HCAP (legacy) system is used, fully qualified domain name or IP address that represents legacy HCAP system.</p>

Setting
Value/Options

Use SSL

No ▾

Yes/No– Determines whether or not the adapter negotiates an SSL connection for all data (and metadata) transfers. Default = No.

User

enter account username (optional)

Password

enter account password (optional)

User login and password used to access the HCP system. Not applicable for HCAP (legacy) system.

This needs to be a local tenant to the HCP system and cannot be a domain account.

Advanced Adapter Settings (Hide)

Root

enter an account root folder (optional)

Folder path to use when storing the SharePoint content under this profile. Facilitates the current best practice of dividing up the HCP/HCAP namespace by application. Please remember that HCP/HCAP paths and folder names are case sensitive.

Strict SSL

No ▾

Yes/No– If *UseSSL* is *Yes*, the *StrictSSL* flag controls whether or not the use of "self-issued" or otherwise suspicious certificates on the HCP/HCAP system will be tolerated. Note that the default certificate out of the box with HCP/HCAP is self-issued and will not work unless this flag is set to No (default).

Timeout (in seconds)

120

Number of seconds to wait for a response to any request before considering it an excessively long wait and raising an error condition. Default = 120.

UID

enter an account UID (optional)

Identifies the "owner" of all content uploaded with this adapter. See HCAP documentation for details on UID, GID and permissions semantics. By default, permission checking is disabled on HCAP (legacy) systems. Not applicable to HCP.

Setting Value/Options

Verify Hash

No ▾

Yes/No – If set to *Yes*, adds content integrity checking by comparing a locally computed hash for the file bits against the hash returned from HCP/HCAP during upload operations. Default = No.

Retry

3

Specifies the number of attempts to retry the network connection to HCP/HCAP before returning a failure result in case of network disruption or connectivity issues. Default = 3.

Retention

Delete Allowed

Permanent

Indefinite

Date Format:



Duration/Interval: Day(s) ▾

If supplied, the HCP/HCAP adapter will calculate and supply a retention policy when saving content.

Possible settings:

- Delete Allowed - No special permissions are required to delete content on this endpoint.
- Permanent - This maps to -1 or “Infinite retention, cannot be deleted” in HCP/HCAP.
- Indefinite - This maps to -2 or “Initial Unspecified” in HCP/HCAP. Content cannot be deleted, but retention can be changed at a later time.
- Date Format - This sets a date for the retention policy. Click the calendar icon to select a date, or type it like this example (mm/dd/yyyy): 08/31/2009.
- Duration/Interval - Type a number in the first box and select an interval from the dropdown. The interval may be days (D), months (M) or years (Y). Example: 5D would equal 5 Days.



NOTE: You cannot shorten the retention period once it has been established, unless it was initially set to Indefinite.

Setting
Value/Options

HCP-Specific

Hold Index Shred

If Hold is checked, you can place an object on hold. An object that is on hold cannot be deleted, even by a privileged delete operation. Holding objects is particularly useful when the objects are needed for legal discovery.

HCP-Specific

Hold Index Shred

If Index is checked, the metadata query engine indexes custom metadata. Having index set to true will speed-up metadata search experience.

HCP-Specific

Hold Index Shred

If Shred is checked, all objects will be shredded when deleted.

Shredding, also called secure deletion, is the process of deleting an object and overwriting the places where its copies were stored in such a way that none of its data or metadata, including custom metadata, can be reconstructed.

Is WORM Device

No ▾

If the endpoint is on a WORM (Write Once, Read Many) device, Unused BLOB Cleanup will ignore this endpoint.

Folder Content in BLOB Store

Yes ▾

Folder Scheme

YYYY/MM/DD/HH/MM ▾

No– Externalized content BLOBs are not placed in folders (default).

Yes– Externalized content BLOBs are placed in folders.

If *Folder Content in BLOB Store* is *Yes*, you can select a date/time folder scheme from the dropdown.

YYYY/MM/DD/HH/MM is the default.

Setting
Value/Options

Test Storage Settings

The Test Storage Settings button can be used at this point, or after completing the endpoint configuration, to verify that the endpoint is accessible.

Compress Content in BLOB Store

No ▾

Content is compressed using the GZip/Deflate method.

No– Externalized content BLOBs are not compressed (default).

Yes– Externalized content BLOBs are compressed.

Encryption Method for Content in BLOB Store

None ▾

None– Encryption will not be applied to externalized BLOBs (default).

AES (128 bit)– 128 bit AES encryption will be applied to externalized BLOBs.

AES (256 bit)– 256 bit AES encryption will be applied to externalized BLOBs.

Encryption Key Passphrase

Generate Key

*Enter a passphrase to be used to generate a key or leave blank to generate a random key. The pass phrase entered is **not** saved with the Endpoint.*

Enter a passphrase to use when generating the encryption key. Using a passphrase will help you re-create the encryption key if necessary. You can generate a random key by leaving the box blank and clicking the *Generate Key* button. The encryption key passphrase will be hidden.

Generate warning notification if:

- 10 or more successive errors are encountered
- there is less than 10 MB % of free space

A warning email can be sent if it encounters errors.

Automatically take endpoint offline if:

- 25 or more successive errors are encountered
- there is less than 1 MB % of free space

An online storage endpoint can be automatically taken offline if it encounters errors. If a storage

Setting Value/Options
<p>endpoint is taken offline automatically, BLOBs that were intended to be written to that endpoint will go to the content database.</p>
<p>Send Warning Notifications to:</p> <p><input checked="" type="checkbox"/> Use Notification Defaults</p> <p>Additional Contacts</p> <p>admin@company.com</p> <p><i>Provide a semi-colon delimited list of e-mail addresses.</i></p> <p>Default email addresses for system error and offline notification can be entered. Check the box to include the list of Default Notification Contacts specified on the General Settings page.</p>

Example Storage Endpoint using HCP or HCAP Adapter

Storage Settings
Please provide storage device settings in this section.

Adapter: HcapRest

Adapter Settings: Show Connection String

Hitachi Platform:

HCP
 HCAP (legacy)

Host: 192.168.1.51

Click the *Show Connection String* checkbox to edit the connection string. Otherwise, fill in the connection fields shown for the adapter selected. Notice that the connection string parameters are name/value pairs separated by semi-colons.

Storage Settings
Please provide storage device settings in this section.

Adapter: HcapRest

Adapter Settings: Show Connection String

Connection:

```
LEGACY=False;HOST=192.168.1.51;USESSL=False;USER=;PASSWORD=;ROOT=;STRICTSSL=False;TIMEOUT=120;UID=;VERIFYHASH=False;RETRY=3;RETENTION=;HOLD=False;INDEX=False;SHRED=False;
```

Provide adapter-specific connection attributes. Please refer to the adapter documentation for connection string details.

i | **NOTE:** Adapter parameters are not case-sensitive.

i **NOTE:** You should always use a passphrase when generating encryption keys. The passphrase gives you a means of re-creating keys should they become unrecoverable or corrupt. It is very important to remember or record the passphrase outside of StoragePoint. Otherwise, encrypted content could become irretrievable in the event of a database failure.

i **NOTE:** Clicking the Test Storage Settings button on a storage profile using the HCP Adapter could result in an error. The profile test performs several operations, including a delete operation. If you are setting a retention parameter on the connection string then you will receive an error letting you know that the delete failed. This should not be considered a failure of the test.

If you choose to externalize content, you should test the storage profile settings by clicking the *Test Storage Settings* button. A message under the button will indicate whether or not the test was successful. If the test fails, the message will include the error that was the root cause of the failure.

i **NOTE:** When testing access to an endpoint from within Central Administration, the Identity of the Application Pool hosting the Central Administration Site is the one that is being used for the test. If there are different Identities used for other Web Applications in the Farm, those identities will also need access but cannot be tested from within Central Admin itself. See BLOB Store Security and StoragePoint Required Privileges in the StoragePoint Reference Guide.

VerifyWrites

This option posts back to StoragePoint to validate that the BLOB was written to the endpoint. It is not part of the connection string by default but can be added by editing the connection string only; there is no user interface for this option. If verbose logging is enabled, the logs may contain information such as 'Written file verified as present: <filename>.'

```
VERIFYWRITES=True;
```

Retention Promotion from IMP

If retention settings have been configured in the SharePoint site or library, those retention settings will stay with the BLOB when it goes to the endpoint. To enable this, there is a box on the endpoint screen, when adding the endpoint to the profile. If the profile already exists, with the endpoint added, the feature can still be enabled but will only be applied to BLOBs created after the feature is enabled.

1. Open or create a profile.
2. Add the endpoint to the profile.

3. On the endpoint screen, at the bottom, there will be an option to Enable Retention Promotion from IMP. Check this box.

Retention Promotion from IMP

This Endpoint is capable promoting retention value from IMP. If you select this option retention will be set according to IMP. This value is applied only when BLOB is created.

Enable Retention Promotion from IMP

Event Based Retention

EBR is a feature that can be configured for certain storage endpoints. In addition to the default retention that can be configured on the endpoint, certain actions like updating a field can update the content to specify a different retention period. The steps for configuring the adapter to support EBR are outlined below.

The endpoint must be added to the profile for the following steps to work.

1. Expand the Archiving section of the profile.
2. Set the Enable Archiving dropdown to Yes.
3. Click New Rule.
4. Click Change to select the scope of the rule, which can be as wide as the profile scope or as narrow as a list. Click Ok.
5. Select Metadata Change Rule and click New Condition.
6. By selecting the same endpoint that was added to the profile, a new field displays for designating EBR. Check the EBR box, select a field to base the retention on, and enter the number of days to which to update the retention time.

Event Based Retention

Specify event-based retention parameters to apply to the content if this condition is met.

Enable Event Based Retention for This Rule

Select a Date Property to Base Retention On

Created ▾

+ Days

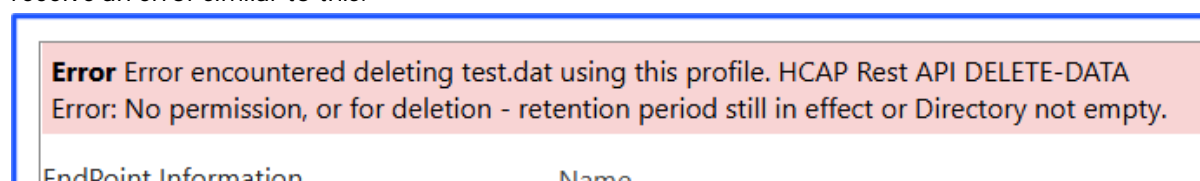
7. Click OK on the Condition window.
8. Click OK on the Rule window.
9. Click Save on the archiving page.
10. (OPTIONAL) Select Immediately or schedule a timer job to run, to process existing content for this archiving rule. Click OK on the Process Existing page.

i | **NOTE:** Content retention is modified when the field changes, not when it is uploaded. Uploaded content will receive the default retention setting, but modifying the designated EBR field will update the retention setting for that content.

Appendix: Troubleshooting

Problem: Receive an error message when testing a storage profile.

When clicking the *Test Storage Settings* button on a storage profile using the HCP or HCAP adapter you receive an error similar to this:



This error is because a RETENTION value was specified on the storage profile's Connection String and StoragePoint cannot delete the externalized test file. This should be considered a successful test.

Problem: Receiving errors on storage or retrieval of externalized content.

Wherever possible, StoragePoint surfaces error messages returned by HCP/HCAP either directly to the user or within the SharePoint ULS logs. You should refer to your HCP/HCAP documentation for errors logged by the HCP/HCAP Adapter.

Problem: Newly uploaded content is not being archived as expected.

For event-based retention to work, the item has to exist before it can be tagged with retention during the archive process. So, if content is uploaded with a change to the metadata that would normally archive the item, it won't be archived. However, any subsequent change to the item will flag it for archiving, and the next successful run of the content queue migrator will archive that content.

About Us

Quest Software creates technology and solutions that build the foundation for enterprise AI. Focused on data management and governance, cybersecurity and platform modernization, Quest helps organizations address their most pressing challenges and make the promise of AI a reality. Around the globe, more than 45,000 companies including over 90% of the Fortune 500 count on Quest Software. For more information, visit www.quest.com or follow Quest Software on [X \(formerly Twitter\)](#) and [LinkedIn](#).

Contacting Quest

For sales or other inquiries, visit www.quest.com/contact.

Technical Support Resources

Technical support is available to Quest customers with a valid maintenance contract and customers who have trial versions. You can access the Quest Support Portal at <https://support.quest.com>

The Support Portal provides self-help tools you can use to solve problems quickly and independently, 24 hours a day, 365 days a year. The Support Portal enables you to:

- Submit and manage a Service Request
- View Knowledge Base articles
- Sign up for product notifications
- Download software and technical documentation
- View how-to-videos
- Engage in community discussions
- Chat with support engineers online
- View services to assist you with your product