

erwin[®]
by Quest

Table of Contents

- 1. erwin Evolve 2024.0.1 Release Notes..... 2**
- 1.1. erwin Evolve..... 2
- 1.2. What's New in erwin Evolve 2024.0.1..... 3
- 1.2.1. Major release 2024.0..... 3
- 1.2.1.1. Webmodeler - Existing objects panel 4
- 1.2.1.2. Redesigned Parent Object and Non-Diagrammed Object Selection 5
- 1.2.1.3. Next Gen Theme + Update..... 6
- 1.2.1.4. Improved Attribute Display on Entities (ERDs)..... 6
- 1.2.1.5. Monitoring Service..... 7
- 1.2.2. List of enhancements and fixes 7
- 1.2.3. Product Licensing 10
- 2. About Us..... 14**
- 2.1. Technical support resources 14



erwin Evolve 2024.0

Release Notes

© 2025 Quest Software Inc.

ALL RIGHTS RESERVED.

This guide contains proprietary information protected by copyright. The software described in this guide is furnished under a software license or nondisclosure agreement. This software may be used or copied only in accordance with the terms of the applicable agreement. No part of this guide may be reproduced or transmitted in any form or by any means, electronic or mechanical, including photocopying and recording for any purpose other than the purchaser's personal use without the written permission of Quest Software Inc.

The information in this document is provided in connection with Quest Software products. No license, express or implied, by estoppel or otherwise, to any intellectual property right is granted by this document or in connection with the sale of Quest Software products. EXCEPT AS SET FORTH IN THE TERMS AND CONDITIONS AS SPECIFIED IN THE LICENSE AGREEMENT FOR THIS PRODUCT, QUEST SOFTWARE ASSUMES NO LIABILITY WHATSOEVER AND DISCLAIMS ANY EXPRESS, IMPLIED OR STATUTORY WARRANTY RELATING TO ITS PRODUCTS INCLUDING, BUT NOT LIMITED TO, THE IMPLIED WARRANTY OF MERCHANTABILITY, FITNESS FOR A PARTICULAR PURPOSE, OR NON-INFRINGEMENT. IN NO EVENT SHALL QUEST SOFTWARE BE LIABLE FOR ANY DIRECT, INDIRECT, CONSEQUENTIAL, PUNITIVE, SPECIAL, OR INCIDENTAL DAMAGES (INCLUDING, WITHOUT LIMITATION, DAMAGES FOR LOSS OF PROFITS, BUSINESS INTERRUPTION OR LOSS OF INFORMATION) ARISING OUT OF THE USE OR INABILITY TO USE THIS DOCUMENT, EVEN IF QUEST SOFTWARE HAS BEEN ADVISED OF THE POSSIBILITY OF SUCH DAMAGES. Quest Software makes no representations or warranties with respect to the accuracy or completeness of the contents of this document and reserves the right to make changes to specifications and product descriptions at any time without notice. Quest Software does not make any commitment to update the information contained in this document.

If you have any questions regarding your potential use of this material, contact:

Quest Software Inc.
Attn: LEGAL Dept
4 Polaris Way
Aliso Viejo, CA 92656

Refer to our Web site (<https://www.quest.com>) for regional and international office information.

Patents

Quest Software is proud of our advanced technology. Patents and pending patents may apply to this product. For the most current information about applicable patents for this product, please visit our website at <https://www.quest.com/legal>.

Trademarks

Quest, the Quest logo, and Join the Innovation are trademarks and registered trademarks of Quest Software Inc. For a complete list of Quest marks, visit <https://www.quest.com/legal/trademark-information.aspx>. All other trademarks and registered trademarks are property of their respective owners.

erwin Evolve – Release Notes
Updated – February 2025
Version – 2024.0.1

What's New in erwin Evolve 2024.0

In this release, erwin Evolve Web Platform provides all PSG enhanced plugins and most Marketplace add-ons in Evolve. The enhanced plugins are configurable within the front end web interface and are accessible through the Administration menu. The Marketplace layouts are available in the Evolve Designer.

In other areas of the product, Web Modeler continues to be enhanced, with a brand new 'Existing Objects Panel', and various revised UI/UX elements. It is also possible to restore, saved draft diagrams from an MDB backup.

A new monitoring service has been included, which is expected to be improved, with configurations in subsequent releases. This will help in the operational stability of the product, should known issues occur, as it is able to take remedial actions itself, and notify administrators as required.

Finally, the most used PSG theme 'NextGen' is included as an optional theme.

Major release 2024.0

All Professional Services Marketplace components are now included in the core Evolve Web Platform
Tighter product integration and user experience
Simplified deployment
Improved upgradability from customized environments in this and future releases.

This release brings new Marketplace layouts including:

- Audit Trail Extended
- Chart Custom Color
- Collapsible ListBox
- Compare
- Config Editor
- Custom Query
- Dashboard Timeline
- Dependency Wheel
- Execute Operation
- Filter By Contextual Association
- Filter By External Association
- Filtered ListBox
- Gantt
- Graph 2D
- Grid Simple Extended
- Group By
- Hide Element If
- Hierarchy On Object Page

- List
- Matrix Risk Landscape
- Network
- Operation Box
- Pivot Table
- Popout
- Quadrant Chart
- Reverse List
- Search
- Tree
- Visual Identity Big Icon
- Utils

New Enhanced Plugin controls for:

- Action On Object Page
- Backup
- Check Edit Model
- Custom Display String Enhanced
- Diagram
- Duplicate
- Homepage
- List
- Menu
- Misc
- PageFilter
- Property_type
- Redirect Edit
- Save Configuration
- Table Complex Enhanced
- Workflow

Web Modeler Enhancements:

- Existing objects panel / With object search (Similar to Desktop Suite Modeler)
- Re-designed Parent Object Selection
- Improved menus
- Web Modeler – recover Draft data from Evolve model

Monitoring Service:

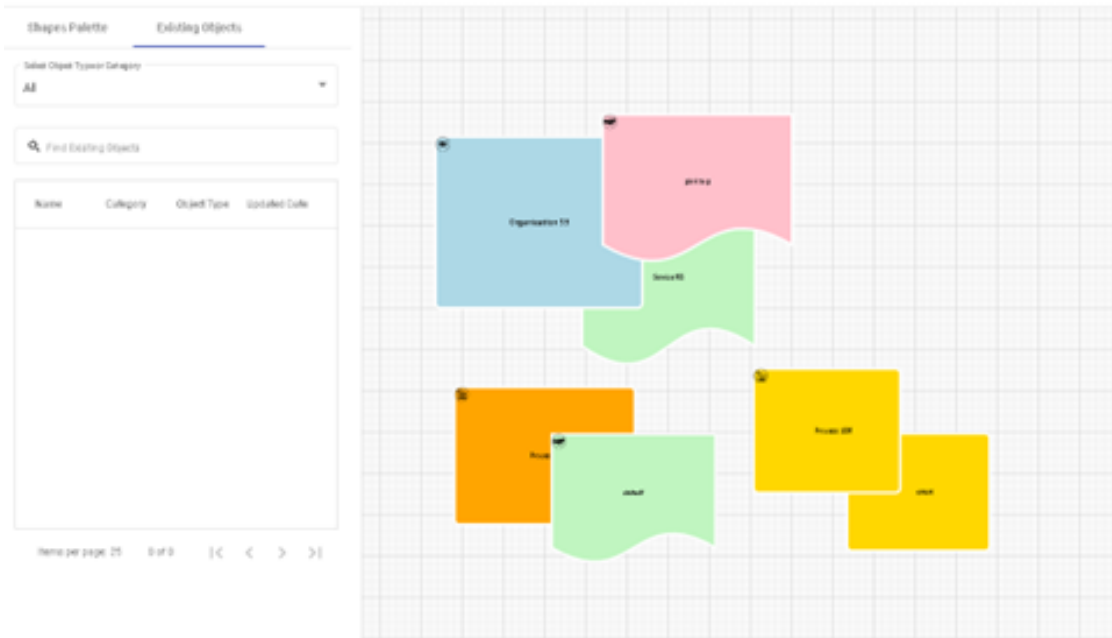
- A new service is included with Evolve to monitor the Web Platform, and other Evolve systems (e.g. Data Transformation)

Other Improvements:

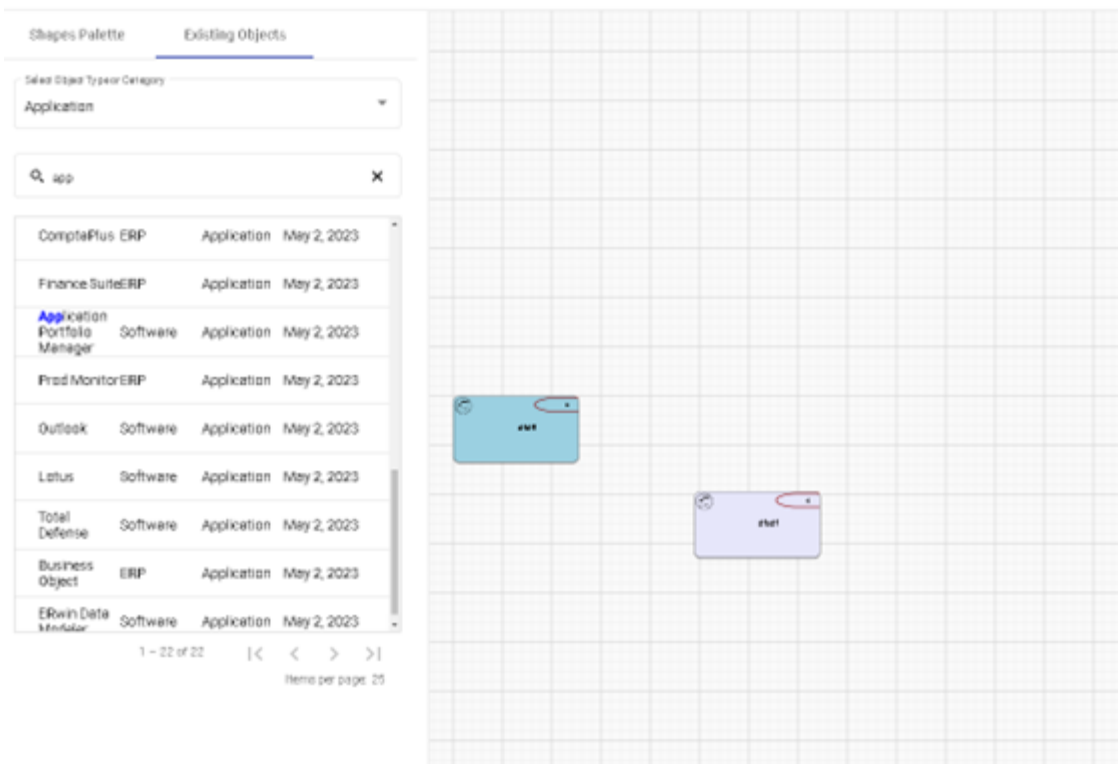
- Next Gen Theme + Update
- General Style updates

Webmodeler - Existing objects panel

A brand new side panel, to the left of the diagram, which allows modelers to filter and add existing objects to a diagram in a similar way to the desktop modeler.

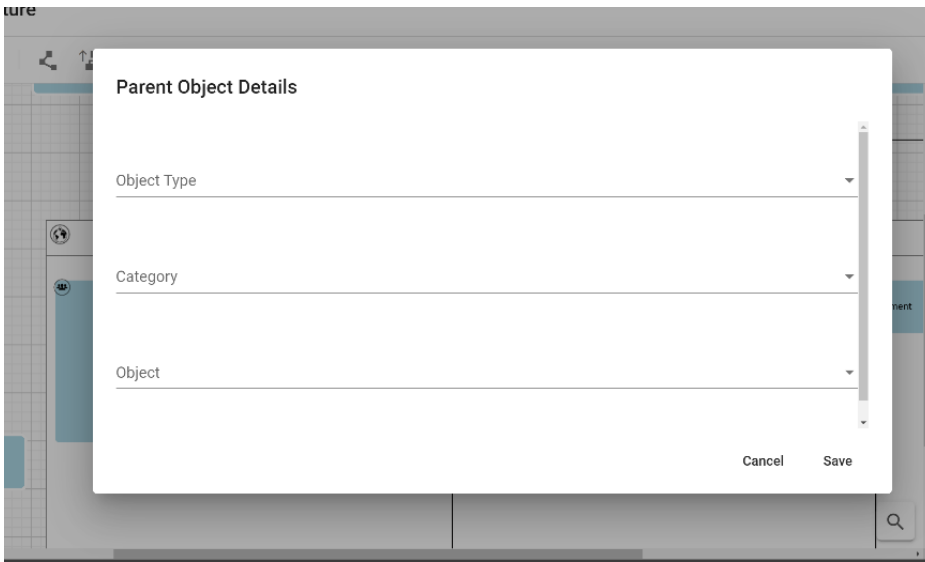


Use filters to find objects in the model, and position them on the diagram.



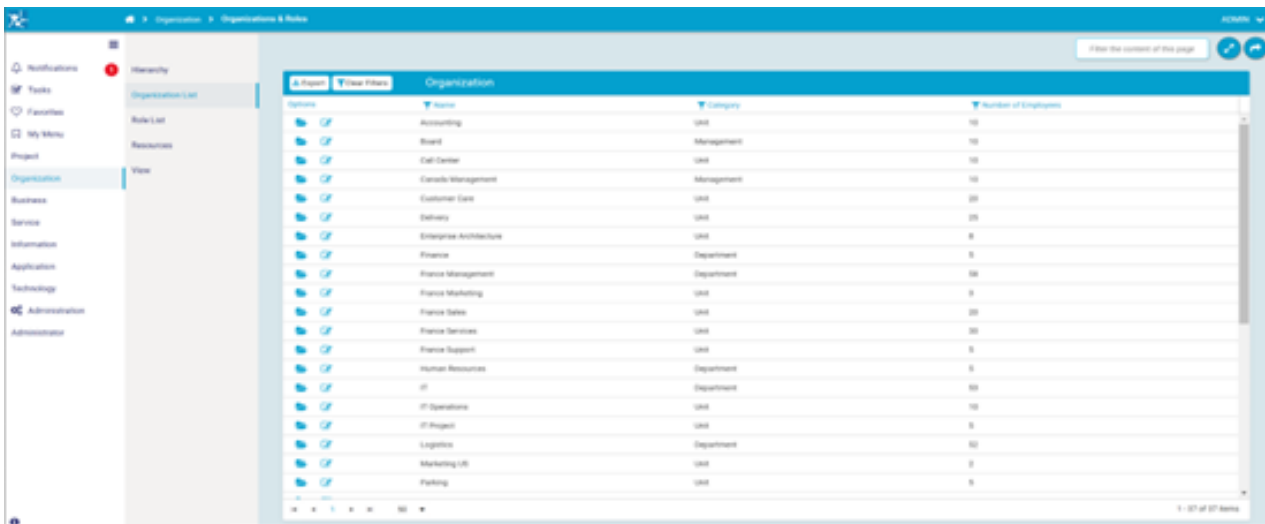
Redesigned Parent Object and Non-Diagrammed Object Selection

Following feedback from users on the object selection dialogs, these have been enhanced to make them easier to use.



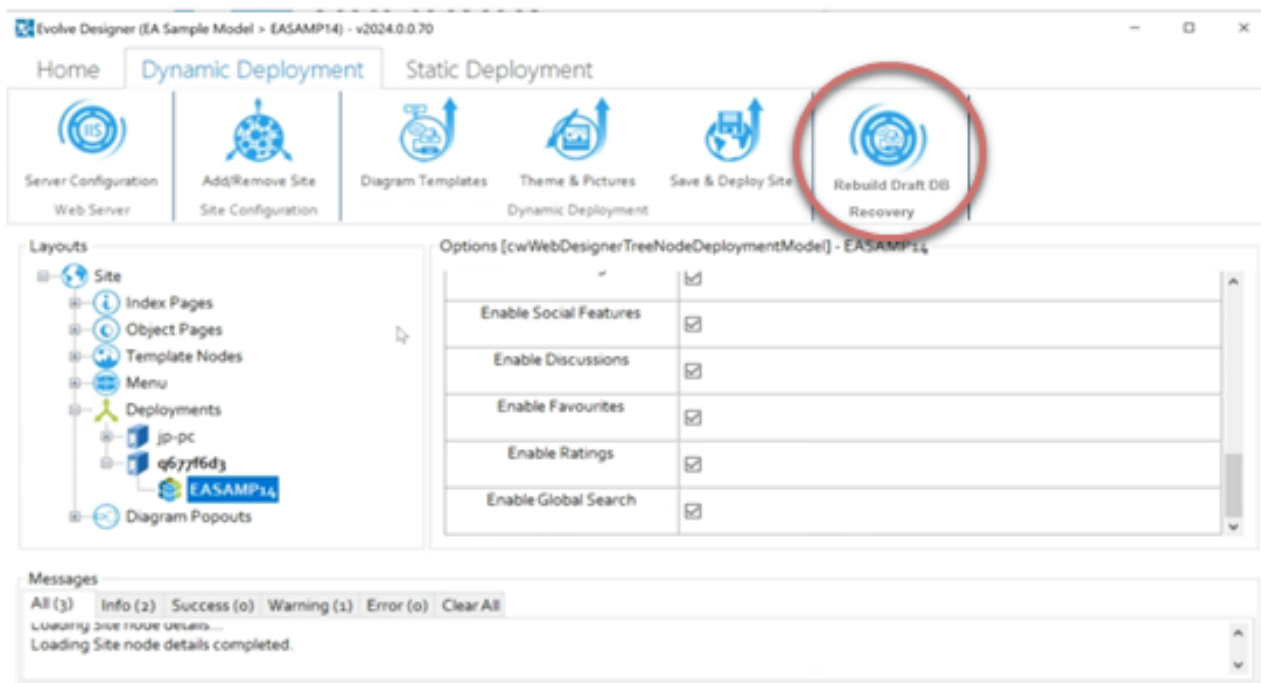
Next Gen Theme + Update

A theme more commonly used by our PSG team, is now available as a default theme in Evolve Web Platform.



Web Modeler Draft Diagram recovery

Recover Draft data from an Evolve model and MDB file. All Saved Web Modeler diagrams will be kept in the Evolve model. Exporting a model as MDB will also export Saved Drafts. The new option allows the drafts to be repopulated from any Evolve Model.



Monitoring Service

A new service is being included with Evolve to monitor the Web Platform, and other Evolve systems (e.g. Data Transformation). This is capable of reporting on a number of identifiable issues, by daily summary email, or by urgent immediate email. It is also possible for it to take remedial action, in some circumstances.

- Identifying specific log message content
- Testing http responses
- Extensible configuration to allow the addition of new issue identification
- It is also capable of some remedial actions such as:
 - IIS Reset
 - App Pool Recycle
 - Execute batch job

List of enhancements and fixes

2024.0.1 Patch Release (11.14.1.118/11.14.1.124)	
RFA / Issue	Description
Bug	Evolve - Fixed issue where a user with multiple Roles, only gets to use the last role added.
2024.0.1 Patch Release (11.14.1.118/11.14.1.123)	
Bug	WebModeler - Fixed issue with license for GoJS

Bug	WebModeler [02624993] - Fixed fail to publish web modeler diagram
Bug	Monitor Service - Fixed issue where Browser Not Supported is written many times in the evolve log file
Enhancement	Web Modeler - The administrator now has an option in the Web Modeler home page, to save all diagram drafts. This means the draft will be stored in the Model database (SQL), and be in the MDB file, when exported. Allowing easier upgrades, as the Web Modeler draft database (MongoDB) can be deleted, and recreated from the Model database, during upgrade.
Bug	Evolve - Enhanced Property Display (configuration) of CoffeeMaker now supports object types with accented characters in the script-name
Enhancement	Monitoring Service - Now emails the administrator if Evolve runs out of licenses.
Bug	Notification Engine - Tasks are now generating for CW Role(is owned by) and CW Role(is approved by user) when they are selected using the notify-by drop down
Enhancement	Evolve - MENU component in Coffeemaker now has updated UI
Enhancement	Monitoring Service - increased the default check time, to 30 seconds to reduce the 'nagging' web requests to evolve
Enhancement	Monitoring Service - supports multiple notification email addresses
Enhancement	Monitoring Service - can now be turned on/off from within Evolve Designer. Also, other improvements to configuration of Monitoring Service within the Evolve Designer UI
Bug	Notification Engine - minor fixes and improvements
Bug	Web Modeler - various fixes when recovering the drafts to the Web Modeler database (MongoDB). Including: fix the return URL in drafts, to match the site, fix the model name, only import drafts (with GUID name), do not give up if one diagram fails.
Bug	Evolve - Fix Save Popout Display Issue with Boolean Value Icons in Coffeemaker
Bug	Evolve - Fixed a deployment issue when Global Search is enabled and Web Modeler is on. First deployment only.

2024.0.0 Major Release (11.14.0.114/11.14.0.120)

RFA / Issue	Description
Enhancement	Web Modeler: Add Existing Objects Panel in Webmodeler
Enhancement	Web Modeler: Backup and Restore draft diagrams to the Model
Enhancement	Web – Built-in many of the Services Group's custom features
Enhancement	Desktop - Model export now uses compression (use the command line if you wish to export without compression)
Enhancement	Tools - Global Search Validator tool checks and fixes issues in the search indexes
Enhancement	Tools - Added a Monitoring Service to report on and fix health issues in Evolve
BUG	Webmodeler – Fixed issues moving contained objects
BUG	Web – Fixed issue adding associations to an editable popout
BUG	Webmodeler [02413169] - When using an object with quote or slash, on publishing webmodeler no longer adds more characters

BUG	Webmodeler [2140543] - Published diagrams now correctly hide display connector names
BUG	Web [02324513] < > Brackets when used in the desktop tool to name objects, now get displayed correctly in Evolve HTML5 Diagrams and in properties
BUG	Web [5071074] - Duration and Frequency datatypes now display correctly in Evolve
BUG	Web [02376126] - Iteration groups now show their name in HTML 5 diagrams
BUG	Webmodeler [02359816] – Fixed issue where creating same-type to same-type associations in Webmodeler would create duplicate associations
BUG	Webmodeler [02379684] - Slim Arrowhead now shows correctly in Webmodeler
BUG	Web [2295807] -Fixed display of primary and non primary attributes in erwin evolve
BUG	Desktop – Fixed issue where Model Explorer was unable to clear date fields
BUG	Web – Fixed intermittent issue where an expired token could cause evolve to not allow users to login
BUG	Web [02452029] – Improved performance, when a site has more than 20000 users. Login to evolve is now improved for a user's first time logon
BUG	Web [02379033, 02413160] – Fixed issue where Evolve Diagram Designer could duplicate filters when opening them
BUG	Web – Fixed Loading child nodes... it could get stuck on editing a diagram designer diagram
Enhancement	Webmodeler – Added some missing shapes types to Webmodeler
BUG	Webmodeler - Preview of Diagrams is sometimes not showing in Drafts Manager Page
BUG	Webmodeler – Fixed an issue where the Diagrammer Service become unresponsive
BUG	Web - TinyMCE upgrade issues addressed
BUG	Web – Fixed issue where Advanced Workflow form properties were not displayed
BUG	Web - Setting lookups as disable now works correctly in Advanced Workflow
BUG	Web – Fixed issue where Pivot Tables and Network diagrams wouldn't load
BUG	Web - Word Icon now shows correctly in "Coffeemaker" component
BUG	Web - Advanced Workflow no longer needs 2 clicks to show the drop down for types
BUG	Webmodeler - Publishing a draft diagram no longer leaves behind a detached draft diagram
BUG	Web - DocX document generator now functions correctly
BUG	Web - Prevented common.json being removed on uninstall

BUG	Webmodeler - Allow the use of <> brackets in Webmodeler shape names
Security	General Package and Component Updates
Security	MongoDB upgraded and moved into the Evolve install folder

Product Licensing

As of the 2023.1.0 release of erwin Evolve Suite / Web Platform, licensing is migrating to the standard Quest Inc. license system. During the migration, there will be a grace period, whereby existing customers can continue to use their existing Casewise licenses. Quest do not intend to force customers onto the new licensing and will work with them to ensure a successful migration.



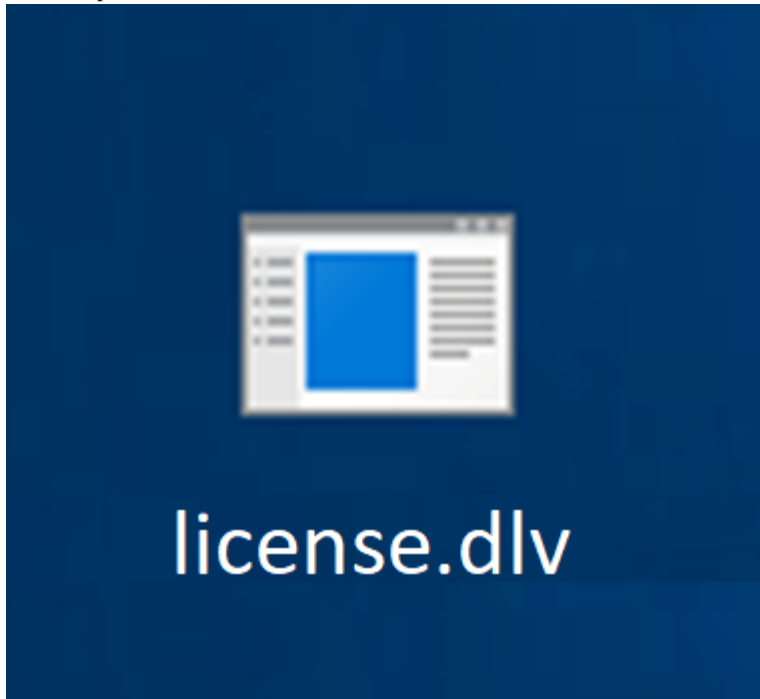
If you are considering upgrading to 2024, you should not be concerned with the new licensing system, as its usage is optional now.

Activating your Quest License

The process for activating an erwin Evolve license is:

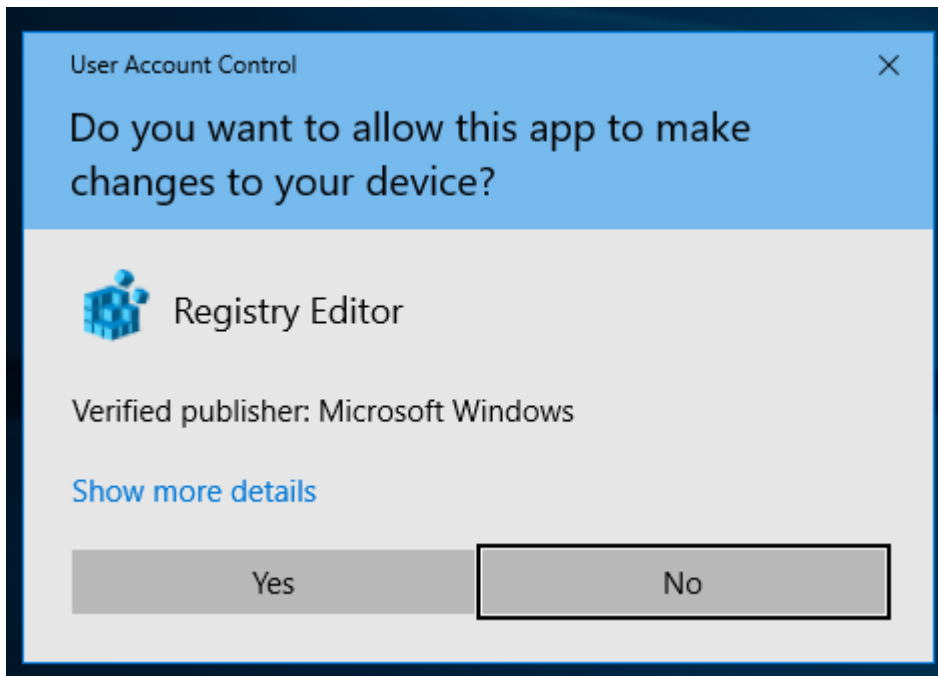
- 1.Support will provide you with one or more license files per Server machine that requires licensing.

For example:

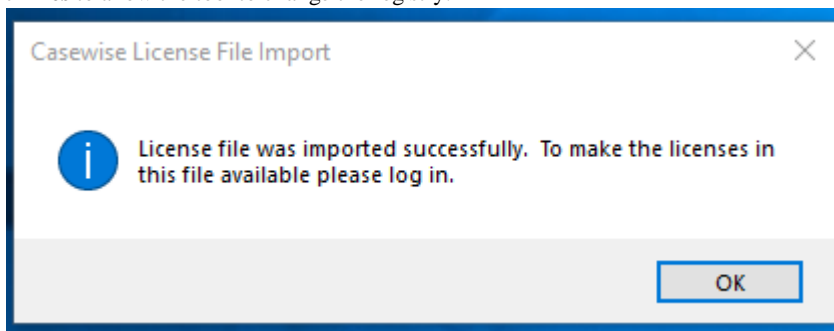


- 2.Having installed the software, copy this file to your server's desktop.

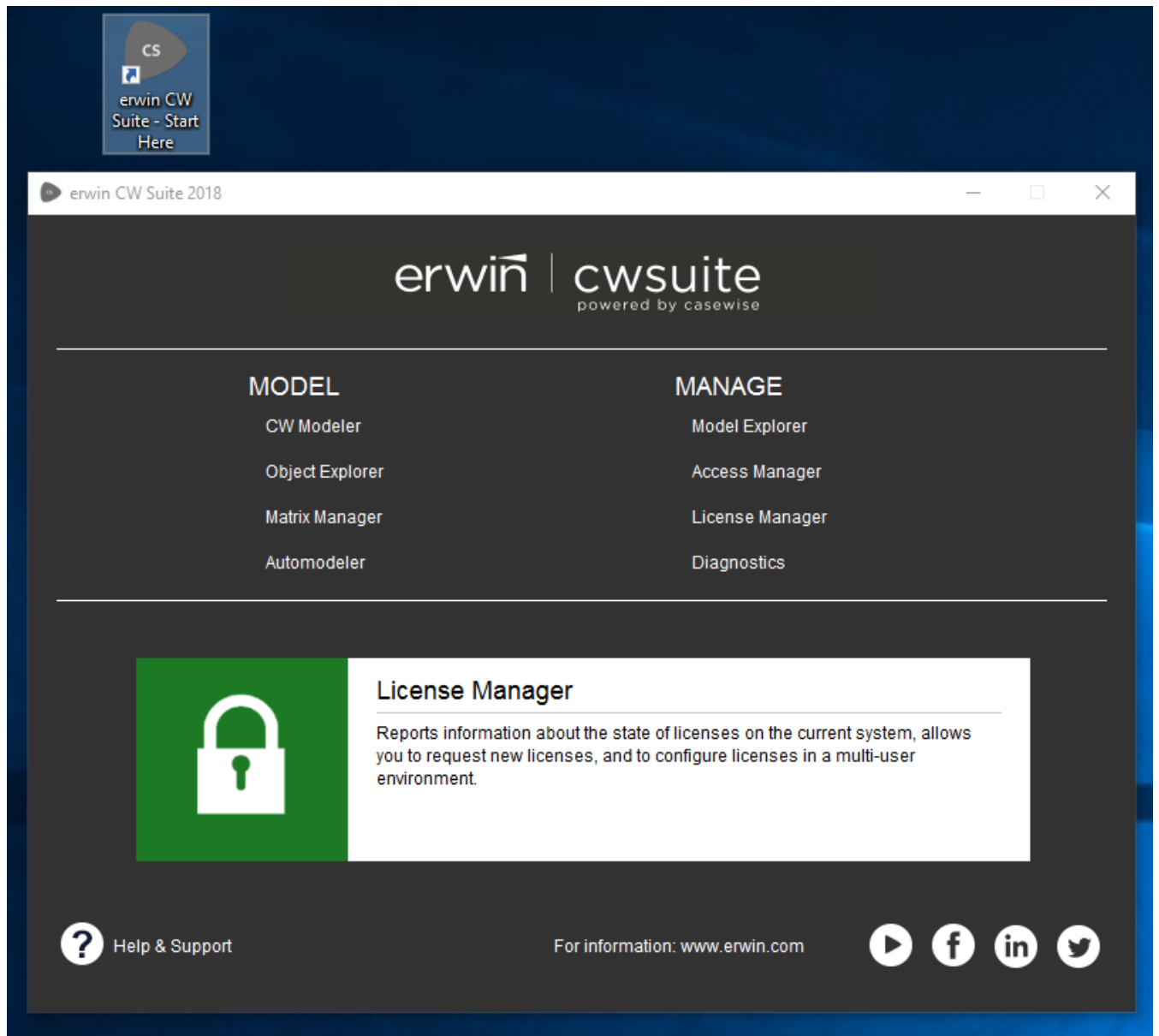
- 3.Double-click on the file. You will be presented with a warning:



4. Click **Yes** to allow the tool to change the registry.



5. The software now has the purchased licenses activated on the server. To verify this, load the License Manager. Open erwin Evolve suite - Start Here.



6. Click **License Manager**, and login.

7. License Manager will show the license code, and various other attributes.

License Name	Product	Version	Type	License ID	Expiry Date
Multi-User database	erwin Evolve Suite	CM2009.1	Client	C1rm4qsmqdg22rm4qsm3rm4qsm4rade2	Does not expire
erwin Evolve Suite	erwin Evolve Suite	CM2009.1	Client	C1rm4qsmqdg22rm4qsm3rm4qsm4rade2	Does not expire
Evolve Web Platform Server	erwin Evolve Web Platform	CM2009.1	Client	C1rm4qsmqdg22rm4qsm3rm4qsm4rade2	Does not expire
Evolve Web Platform Contributors (1)	erwin Evolve Web Platform	CM2009.1	Client	C1rm4qsmqdg22rm4qsm3rm4qsm4rade2	Does not expire
Evolve Web Platform Contributors (1)	erwin Evolve Web Platform	CM2009.1	Client	C1rm4qsmqdg22rm4qsm3rm4qsm4rade2	Does not expire
Evolve Web Platform Offline Generation	erwin Evolve Web Platform	CM2009.1	Client	C1rm4qsmqdg22rm4qsm3rm4qsm4rade2	Does not expire
Evolve Web Platform	erwin Evolve Web Platform	CM2009.1	Client	C1rm4qsmqdg22rm4qsm3rm4qsm4rade2	Does not expire
Auto Diagram Designer	erwin Evolve Web Platform	CM2009.1	Client	C1rm4qsmqdg22rm4qsm3rm4qsm4rade2	Does not expire
Evolve Web Platform Social Follower (Unlimited Users)	erwin Evolve Web Platform	CM2009.1	Client	C1rm4qsmqdg22rm4qsm3rm4qsm4rade2	Does not expire

Returning your erwin License

If you need to move the license from one server to another, you must contact support, who will assist with the migration.

About Us

Quest creates software solutions that make the benefits of modern technology real in an increasingly complex IT landscape. From database and systems management to Active Directory and Office 365 management, and cyber security resilience, Quest helps customers solve their next IT challenge now. Around the globe, more than 130,000 companies and 95% of the Fortune 500 count on Quest to deliver proactive management and monitoring for the next enterprise initiative, find the next solution for complex Microsoft challenges and stay ahead of the next threat. Quest Software. Where next meets now. For more information, visit www.quest.com.

Technical support resources

Technical support is available to Quest customers with a valid maintenance contract and customers who have trial versions. You can access the Quest Support Portal at <https://support.quest.com>.

The Support Portal provides self-help tools you can use to solve problems quickly and independently, 24 hours a day, 365 days (about 12 months) a year. The Support Portal enables you to:

- Submit and manage a Service Request
- View Knowledge Base articles
- Sign up for product notifications
- Download software and technical documentation
- View how-to-videos
- Engage in community discussions
- Chat with support engineers online
- View services to help you with your product.