

Toad Data Studio 2.0

Release Notes

Friday, January 31, 2025

Contents

About Toad Data Studio	1
New Features	2
System Requirements	8
Resolved Issues and Enhancements	13
Known Issues	14
Third Party Known Issues	14
Getting Started	16
Product Licensing	16
Globalization	18
About Us	18
Copyright	19

About Toad Data Studio

Toad® Data Studio is a heterogeneous database IDE intended to assist Data Engineers and other technical users to easily manage, query and develop against any database in your environment.

With Toad Data Studio, you can:

- Connect to almost any database or ODBC data source (see the Release Notes for a list of tested ODBC connections)
- Write SQL queries and join data across all platforms
- Automate and schedule frequent and repetitive tasks
- Streamline data collection
- Compare and synchronize databases
- Export data in a variety of file formats
- Version control SQL databases and objects

Toad Data Studio provides a full-featured Database Explorer, Query Builder, and Editor for the following databases:

- Oracle®
- SQL Server® and SQL Azure
- IBM® DB2® (LUW and z/OS)
- SAP® ASE, IQ, SQL Anywhere, and HANA
- Teradata®
- MySQL
- Snowflake®

Toad Data Studio also provides querying and reporting functionality via the following provider types:

- ODBC
- Business Intelligence and NoSQL data sources
- Microsoft® Excel®
- Microsoft Access®

ODBC Connections

The purpose of the ODBC provider is to offer basic connection and querying capabilities to any database that supports an ODBC 3.0 or later driver. For a list of databases tested with the ODBC provider, see the System Requirements in the Release Notes. This form of connectivity allows connections to databases such as Netezza, IBM iSeries, Ingres, and Vertica™. Because this form of connectivity is generic, it is not full-featured and may not be as robust as the fully-exploited providers for the other databases.

Business Intelligence and NoSQL Data Sources

Toad Data Studio provides users with the ability to connect to non-traditional data sources, such as Business Intelligence and NoSQL sources. You can connect to these data sources and explore data and objects, query data, report results, and automate tasks.

The following data sources are supported:

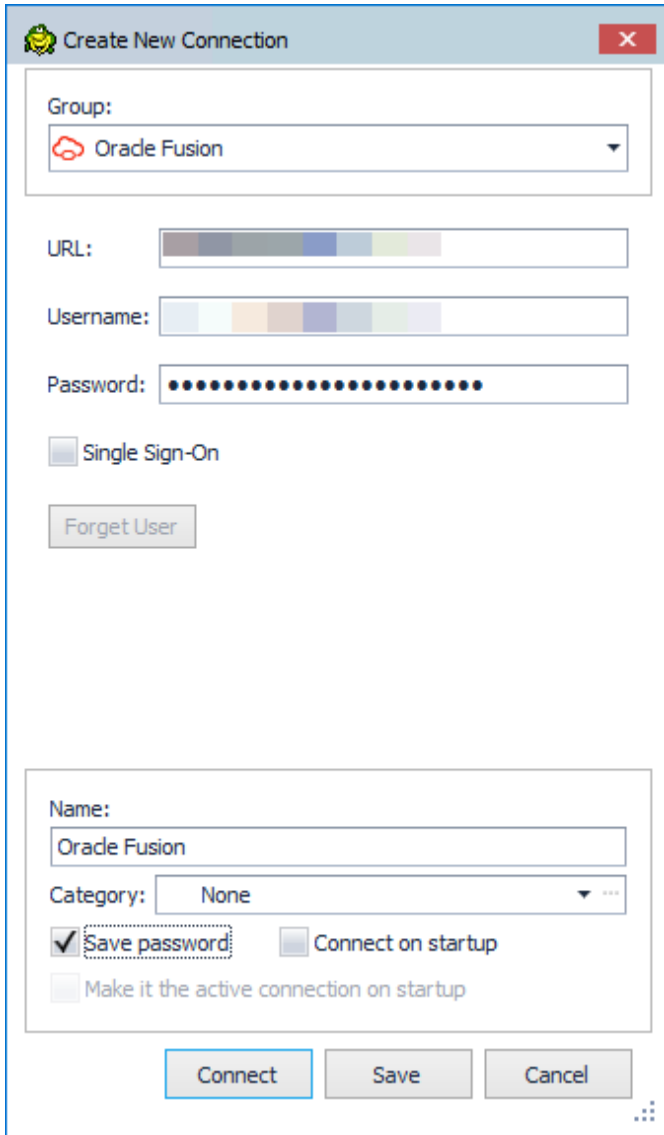
Business Intelligence	Oracle Business Intelligence Enterprise Edition (OBIEE), SAP Business Objects™, Salesforce®, Microsoft SQL Server Analysis Services, Google Analytics™, OData, Oracle Fusion and SharePoint®
NoSQL	Azure Table Services, Cassandra™, Cloudera Impala, DynamoDB, HBASE™, Hive™, MongoDB™

New Features

In Toad Data Studio 2.0 the following new features were implemented:

Oracle Fusion

Oracle Fusion is now supported as a new Business Intelligence data source in Toad Data Studio. This allows users to access Oracle Fusion data in a read-only format, facilitating easier viewing, exporting, and analysis of the data.



AI Explain

AI Explain is a powerful new feature that leverages AI technology to help our users to understand complex SQL queries and scripts.

With AI Explain, users can easily analyze and interpret intricate SQL statements, making it simpler to grasp their functionality and purpose.

Look for AI Explain on the:

- SQL Editor toolbar
- Script tab for supported object types
- Right-click context menu for supported object types

Supported Objects by Data Sources

Data Source	Supported Objects
PostgreSQL	Procedures, Functions, Views, Tables
DB2/LUW	Procedures, Functions, Views, Triggers, Tables, MQ Tables, Schemas
DB2/ZOS	Procedures, Functions, Views, Triggers, Tables, Packages, Aliases, MQ Tables, Synonyms,

Data Source	Supported Objects
	Databases
MySQL	Procedures, Functions, Views, Triggers, Tables
Oracle	Procedures, Functions, Views, Triggers, Packages, Tables, Database Links, Materialized Views
SAP ASE	Procedures, Views, Triggers, Tables, Users, Databases
SAP HANA	Procedures, Functions, Views, Triggers, Tables, Server Security
SNOWFLAKE	Procedures, Functions, Views, Databases, Tables
TERADATA	Procedures, Functions, Views, Tables, Macros
SQL Server	Procedures, Functions, Views, Tables, Indexes, Databases, Sequences, Synonyms
SAP IQ	Procedures, Functions, Views, Tables, Users, Groups

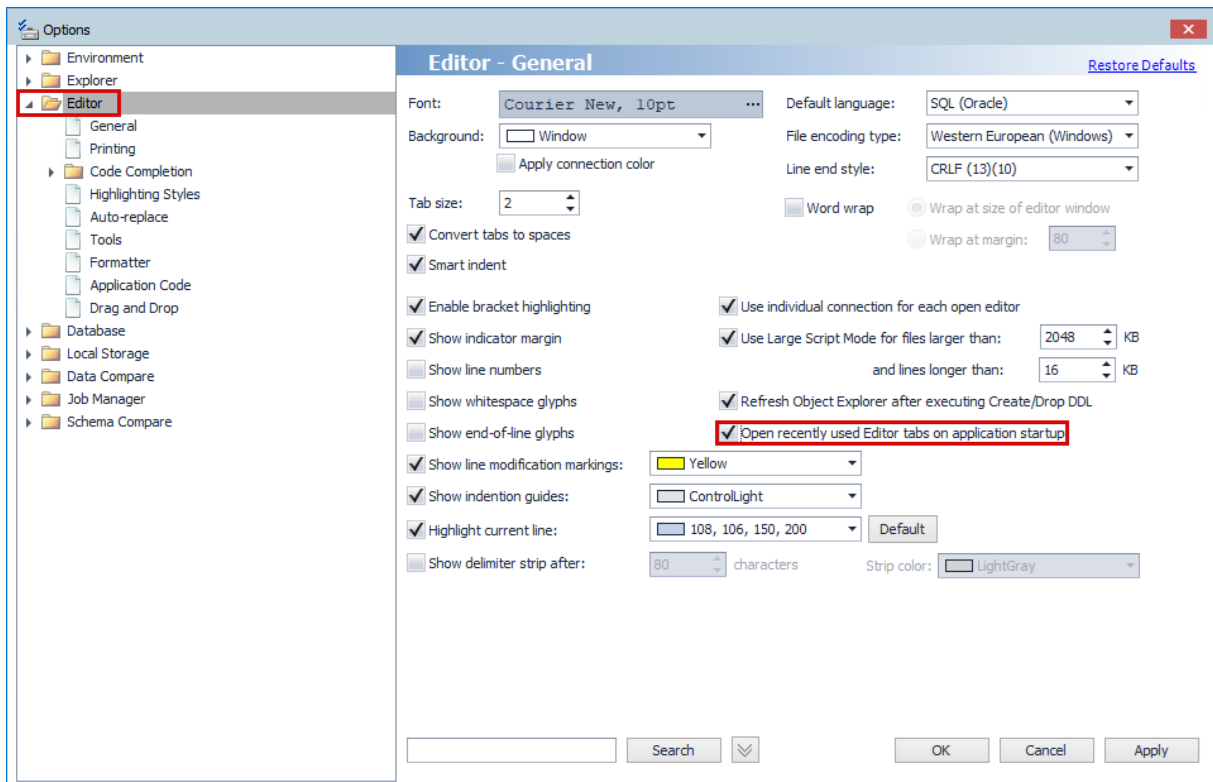
Note: AI Explain is a preview feature available to Toad Data Studio Subscription users. Refer to the [Knowledge Base](#) for instructions on how to enable it. Learn more about AI Explain at [Toad World](#)

Open recently used Editor tabs on application startup

Toad Data Studio 2.0 introduces "Open recently used Editor tabs on application startup".

The last active Editors tabs will be automatically restored on the startup of application.

To activate this feature, navigate to the Options under the Tools tab in the main ribbon tab, expand Editor section, and check the "Open recently used Editor tabs on application startup" checkbox.

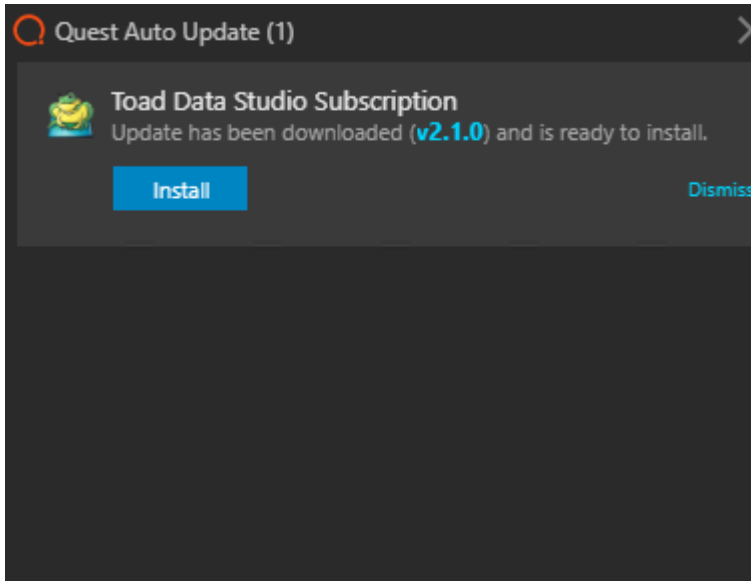


Auto-Update service for upgrading Toad Data Studio Subscription

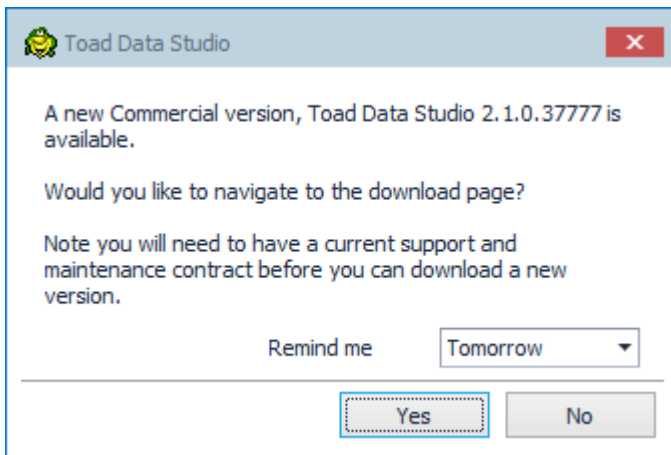
Toad Data Studio 2.0 Subscription edition includes Quest Auto Update, a service that periodically checks for and delivers product updates. Quest Auto Update is configured to run automatically using the Local Service account

after successful installation, Product updates are automatically downloaded, and a notification window alerts you to pending updates.

Quest Auto Update provides daily notifications of available updates. The X button on the notification, snoozes the notification for 24 hours, while the Dismiss option prevents that specific version update from appearing again. Additionally, the notification popup includes a link to the Release Notes of the latest version.



As for the Toad Data Studio offline application, after establishing a connection to the Internet, a message pops up informing that a new version of the application has been published and that can be downloaded.



Allow horizontal grouping of AND/OR conditions in the Where clause in the Diagram tab of the Query Builder

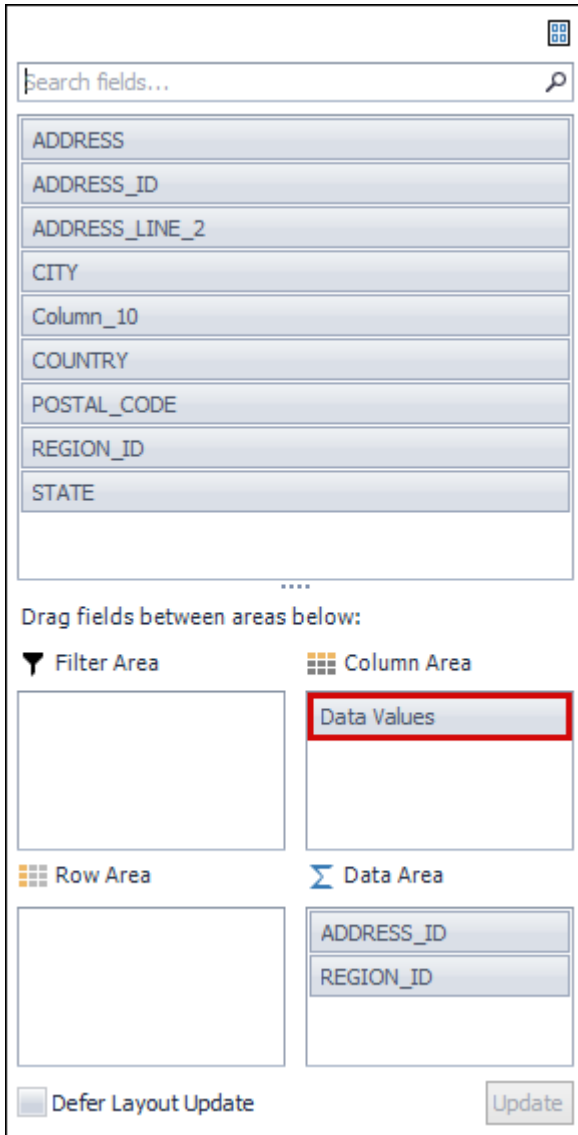
This new feature allows you horizontal GROUPING of WHERE conditions as well as multiple OR lines in query builder diagram. There are also some new user friendly changes in FIELD and SORT options.

Functionality for moving Data area values from Row to Column area

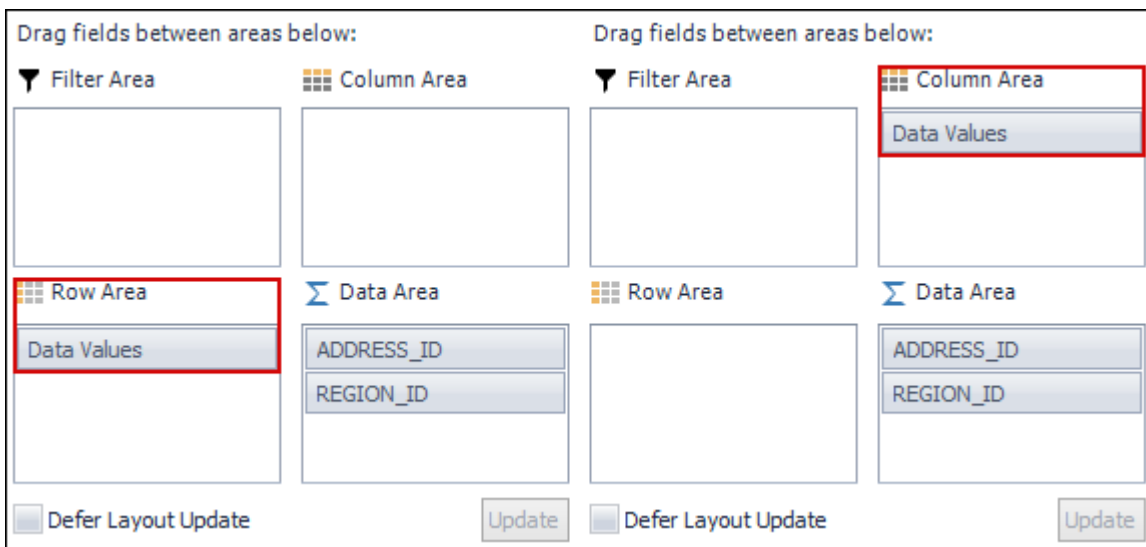
Enhanced functionality:

This new feature in Toad Studio allows end users to choose how data is grouped in the Pivot Grid based on the location of Data Values.

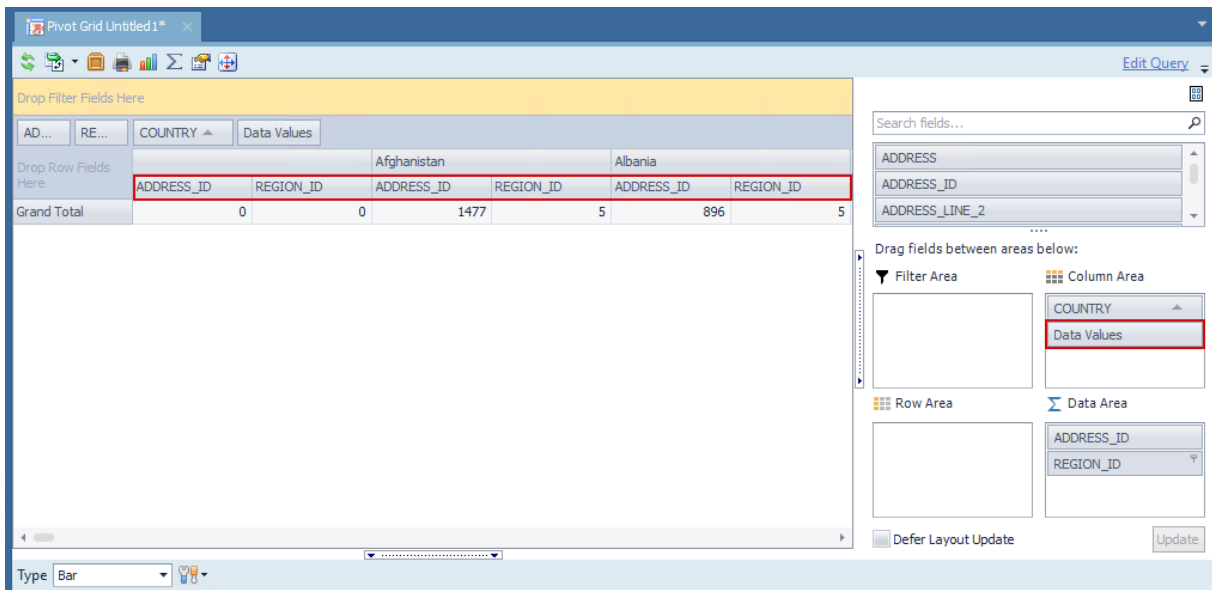
When creating the Pivot Grid, after dragging at least two columns to the Data area, the Data values item will be visible in the Column area:



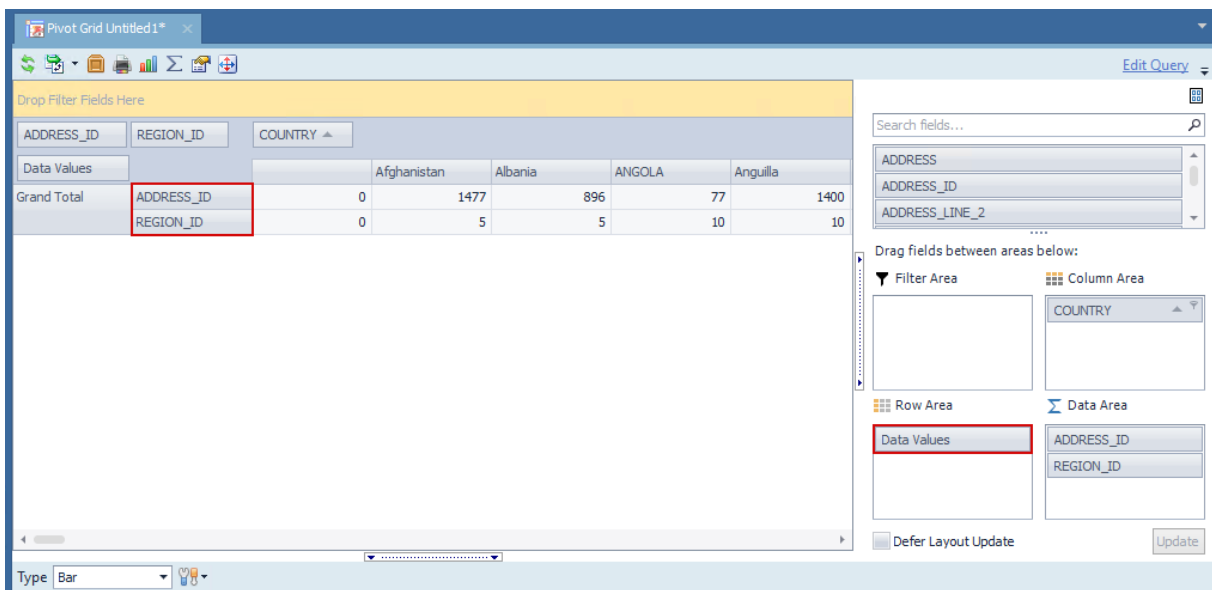
Users can choose where to place the Data Values item, to Column or Row area, by simply dragging the item from one area to another:



When the Data Values item is placed in the Column area, the headers of Data area values are grouped in the Column area of the pivot grid:



When the Data Values item is moved from the Column to the Row area, the format of the Pivot Grid remains the same. Only the headers of the Data area columns are moved under the Row columns in the Pivot Grid:



Every export option for the Pivot Grid preserves the formatting options caused by moving the Data Values item. All changes made to the Pivot Grid file are recognized and preserved downstream (e.g. Automation...)

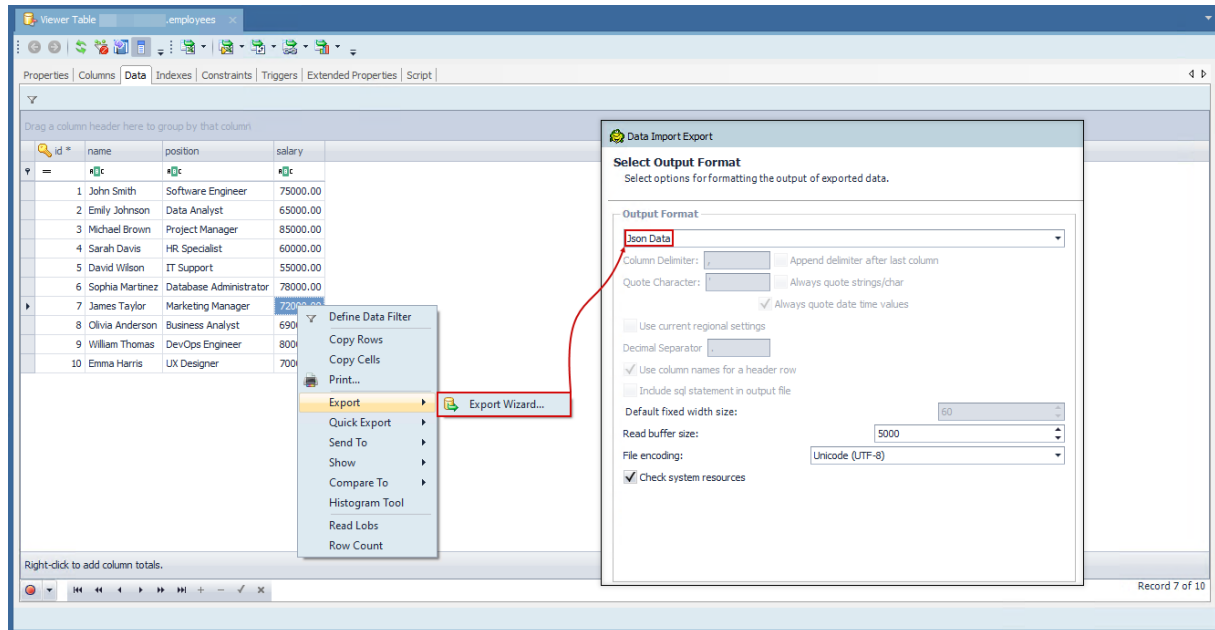
Saving Auto-filter row settings in the Result Sets tab

In this release, we have improved the behavior of the Auto Filter Row feature based on user feedback and usage patterns, to ensure a more intuitive and streamlined experience when working with data grids, providing greater control and efficiency in data filtering and search operations.

The "Auto Filter Row" option is still enabled by default, but when hiding the Auto-filter row after the initial run, this preference is globally retained for subsequent runs and remains in effect when opening new Query Builder or Query Editor tabs within the same Toad Data Point instance. Furthermore, Auto-filter Row settings persist even when re-launching a Toad Data Studio.

Export result set to JSON file format

Using the Export Data Wizard in Toad Data Studio 2.0, you can export data from databases (tables, views), or a query into a JSON file. This functionality is also available through the Export Wizard database activity in the Automation Wizard.



Idea Pond

Got a great idea for a new Toad Data Studio feature or enhancement? Share it with the Development Team and the Community by posting it on Idea Pond.

Visit [Toad Data Studio - Idea Pond](#) where you can submit your ideas. You can also read and vote on the enhancement ideas submitted by other Toad users.

Learn More

Remember, you can find blogs, videos, and forums at the [Toad Data Studio Community](#).

- [Toad Data Studio Videos](#) - Learn about new features from product video demos.
- [Toad Data Studio Forum](#) - Find answers to your questions in the forums.
- [Toad Data Studio Blog](#) - Learn tips and tricks from blog posts.
- [Toad Data Studio - Idea Pond](#) - Submit your idea to the Development Team.

System Requirements

Client Requirements

Before installing Toad, ensure that your client system meets the following minimum hardware and software requirements:

Requirement	Details
Platform	2 GHz processor (recommended minimum)
Memory	8 GB of RAM minimum, 16 GB recommended Additional RAM Requirements: Using Local Storage, Cross-Connection Query, Business Intelligence connections, or NoSQL connections can require an additional 500 MB of RAM. These features start processes (mysqld.exe, hubproxy.exe) which persist for the Toad session.

Requirement	Details
	<p>Note: The memory required may vary based on the following:</p> <ul style="list-style-type: none"> • Applications that are running on your system when using Toad • Size and complexity of the database • Amount of database activity • Number of concurrent users accessing the database
Hard Disk Space	<p>800 MB to install Toad 450 MB to run Toad</p> <p>Additional Recommendations: For retrieving large queries, allow 10 GB free disk space (or more, depending on the size of the data being retrieved). After retrieving 2500 rows, Toad saves data in a TMP (.tmp) file in the user's Temp directory. These TMP files are deleted when Toad closes.</p>
Operating System	<p>Windows Server® 2012 Windows Server® 2012 R2 Windows Server® 2016 Windows Server® 2019 Windows Server® 2022 Windows® 8.1 Windows® 10 Windows® 11</p>
.NET Framework	<p>Microsoft® .NET Framework 4.7.2</p> <p>Teradata® .NET Data Provider</p> <p>You must install the Teradata .NET Data Provider (13.10 or later) to use a Teradata native connection in Toad.</p> <p>Note: To use a Teradata connection in a cross-connection query, you must also install a Teradata (13.10 or later) ODBC driver.</p>
Additional Software	<p>Visual C++ Redistributable for Visual Studio 2019. This software is required. It is included in installation using the .exe installer. If using the .msi installer, ensure that this software is installed prior to installation. See Visual C++ Redistributable for VS 2019.</p> <p>For 64-bit Toad Data Studio, both 32-bit and 64-bit Visual C++ packages are required.</p>
Database Client	<p>DB2® Client</p> <p>Toad no longer installs a DB2 Client along with the Toad application. When connecting to a DB2 database, ensure that you have a DB2 Client or IBM Data Server Driver installed. Toad supports DB2 Client versions 9.7.6 through 11.1.</p> <p>Oracle® Client</p> <p>Toad can connect to Oracle using Direct Connect (no Oracle Client required) or using an Oracle Client or Oracle Instant Client. However, if you want to use LDAP, you must install an Oracle Client. Toad supports 9i or later Oracle Clients and Oracle Instant Clients.</p> <p>Notes:</p> <ul style="list-style-type: none"> • You cannot use Oracle Direct Connection in a cross-connection query. • To use an Oracle connection in a cross-connection query, you must install an Oracle Client (full install) or you must install the Oracle Instant Client plus the Oracle ODBC driver.
ODBC Driver	<p>In order to create a native Snowflake connection, you must install the ODBC Driver 2.24.2 (or later) provided by Snowflake. Upon installing and configuring the driver, Toad Data Studio will be set for this type of connection.</p> <p>Note: New versions of the Snowflake ODBC Driver are backward-compatible, but there is no guarantee that earlier versions are forward-compatible. Active monitoring and maintaining of</p>

Requirement	Details
	<p>installed versions is advised.</p> <p>For more information regarding the process of creating Snowflake connections, please refer to the Installation Guide and User Guide.</p> <p>To create a connection to an Amazon Redshift database you must install the Amazon Redshift ODBC driver 1.3.1.1000 (or later version) on client computers accessing an Amazon Redshift data warehouse. For each computer where you install the driver, there are the following minimum requirements that you can find on the Amazon Redshift Web site.</p> <p>For more information regarding the process of creating Amazon Redshift connections, please refer to the Installation Guide and User Guide.</p>
Additional Requirements	<p>Web Browser Microsoft® Internet Explorer® 11 or later</p> <p>Screen Recommended maximum DPI settings for Toad are 125%. It is possible to use Toad up to 200% but some dialog windows will not be completely usable anymore. Maximum tested resolution for Toad is 3800 x 2160 px.</p>

Server Requirements

Before installing Toad, ensure that your server meets the following minimum hardware and software requirements:

Requirement	Details						
Native Database Server	<p>Toad supports the following databases:</p> <p>Oracle 10g R2, 11g, 11g R2, 12c, 12c R2, 18c,19c, 21c</p> <p>Toad has been tested on Oracle Exadata 2.0 running Oracle database 11g R2.</p> <p>SQL Server 2012 and SQL Server 2012 Express</p> <p>SQL Server 2014 Enterprise and SQL Server 2014 Express</p> <p>SQL Server 2016</p> <p>SQL Server 2017</p> <p>SQL Server 2019</p> <p>Notes:</p> <ul style="list-style-type: none"> • SQL Server Compact Edition is not supported. • Storage Management is not available on SQL Server Express. <p>IBM DB2 for LUW 9.7, 10.1, 10.5, 10.5.0.5, 11.1, 11.5</p> <p>IBM DB2 for z/OS 11, 12</p> <p>Note: Toad may support IBM DB2 Express and SWE in addition to listed above servers but note that no testing was performed on it.</p> <p>Note: Windows 8, 10 and Windows Server 2012 require the following Fix Pack in order to ensure registration of DLLs in Global Assembly Cache:</p> <table border="1"> <tbody> <tr> <td>IBM DB2 LUW 10.5</td> <td>Fix Pack 4</td> </tr> <tr> <td>IBM DB2 LUW 10.1</td> <td>Fix Pack 4</td> </tr> <tr> <td>IBM DB2 LUW 9.7</td> <td>Fix Pack 10</td> </tr> </tbody> </table> <p>MySQL 5.0, 5.1, 5.5, 5.6, 5.7</p> <p>MariaDB 5.5.5, 10.2.8, 10.3.2 (using MySQL provider)</p> <p>SAP ASE 15.5, 15.7, 16 SP03</p> <p>SAP IQ 15, 16</p> <p>SAP SQL Anywhere 16</p>	IBM DB2 LUW 10.5	Fix Pack 4	IBM DB2 LUW 10.1	Fix Pack 4	IBM DB2 LUW 9.7	Fix Pack 10
IBM DB2 LUW 10.5	Fix Pack 4						
IBM DB2 LUW 10.1	Fix Pack 4						
IBM DB2 LUW 9.7	Fix Pack 10						

Requirement	Details
	<p>SAP HANA SPS 08, SPS 09, SPS 10, SPS 11, SPS 12, SAP HANA 2.0, SAP HANA 2.0 SPS 02, and SAP HANA Cloud Databases</p> <p>Teradata 12.0, 13.0, 13.10, 14, 15, 16</p> <p>Access® 2007, 2010, 2013, 2016</p> <p>Note: To use Access 2016 64-bit to connect to an Access database in Toad, the Microsoft Access Database Engine is required and might not be included in the Access installation. The engine must match the architecture (bitness) of Toad.</p> <p>Excel® 2003, 2007, 2010, 2013, 2016</p> <p>Note: To use Excel 2016 64-bit to connect to an Excel or .csv file in Toad, the Microsoft Access Database Engine is required and might not be included in the Excel installation. The engine must match the architecture (bitness) of Toad.</p>
ODBC Database Server	<p>Toad Data Studio allows you to create a connection to a database that supports an ODBC 3.0 or later driver. ODBC connectivity provides basic querying capability, but may not be as full-featured as a native connection in Toad. Toad has been tested on the following databases, using an ODBC connection:</p> <ul style="list-style-type: none"> • DB2 for i5/OS V5R4 and IBM i 6.1, 7.3 • EDB Postgres Advanced Server 10 • Greenplum® Database • Informix Dynamic 10.00, 11.0 (limited testing) • Ingres Community Edition 2006 R2 on Windows 32-bit (limited testing) • Netezza Data Warehouse Appliance 4.6.6, 6.0, 7.0, 7.2.1 • PostgreSQL® 9.5, 9.6.3, 10, 11, 12, 13, 14, 15, 16 • Vertica 4.1, 5.0, 5.1 (with 4.0, 4.1 ODBC driver), 6.0 (with 6.0 ODBC driver), 6.1, 7.0, 8.1, 9.0
Cloud Database Service	<p>Oracle databases running on Amazon EC2</p> <p>SQL Azure and Azure SQL Data Warehouse</p> <p>Note: To be able to utilize a majority of Toad functionality, please grant VIEW DEFINITION on the SQL Azure databases you want to work with.</p> <p>SQL Server databases running on Amazon EC2</p> <p>Toad can manage Amazon RDS and any other cloud or service offering compatible with MySQL.</p>
Business Intelligence Connections	<p>Toad has been tested with, and supports, the following Business Intelligence platforms:</p> <p>SAP Business Objects XI 3.1, 4.1</p> <p>Oracle Business Intelligence Enterprise Edition 12.2</p> <p>Salesforce.com®</p> <p>Microsoft SQL Server Analysis Services 2016</p> <p>Google Analytics™</p> <p>OData version 4</p> <p>Oracle Fusion</p> <p>SharePoint® Server 2013</p>
NoSQL Connections	<p>Toad has been tested with, and supports, the following NoSQL platforms:</p> <p>Azure Table Services</p> <p>Apache Cassandra™ 3.11.0</p> <p>Amazon DynamoDB</p> <p>Apache HBASE™ 1.2.6</p> <p>Apache Hive™ 2.1.0</p>

Requirement	Details
	Cloudera Impala 2.9.0, 3.2.0 with CDH 6.3.2. Toad Data Studio has been certified by Cloudera. MongoDB™ 3.4.6, 3.4.9, 4.0
VM and Cloud Platform Environments	In general, the databases and data sources listed in this table are also supported when installed on a virtual machine (VM) or cloud platform. See the database or data source documentation for more specific information.
Additional Testing	<p>Data Set Size</p> <p>The following Toad Data Studio functionality has been tested with data sets of up to 5 million rows: SQL Editor, Data Compare, Import Wizard, Export Wizard.</p> <p>For the following Toad Data Studio modules, working with very large data sets can impact performance. For best results in these areas, work with data sets of less than 1 million rows: Pivot Grid, manually sorting a result grid, performing more than one Data Compare at a time (such as running multiple Data Compare Automation scripts simultaneously).</p> <p>Notes:</p> <ul style="list-style-type: none"> • Performance can vary based on available disk space and memory, CPU speed, and the bitness of Toad, as well as the type and number of columns. • Import and export functionality was tested with .csv files.
Security	<ul style="list-style-type: none"> • The TLS protocol v1.2 or above is required when establishing secure connections to MySQL data sources

Virtualization Support

Requirement	Details
Application Virtualization	<p>When deploying Toad in a virtualization environment, for best results ensure the system accurately reflects the applicable client hardware and software requirements listed in this document.</p> <p>Toad has been developed using Microsoft guidelines (see Remote Desktop Services programming guidelines) and can be deployed and operated in virtualization environments such as Citrix XenApp, Microsoft App-V, and VirtualBox.</p> <p>See "Install Toad on Citrix Systems" (page 1) for more information.</p>
Server Virtualization	<p>Toad has been tested with the following:</p> <ul style="list-style-type: none"> • Oracle VM 3.1 running on Red Hat Enterprise Linux 64-bit with Oracle 11gR2 • Oracle VM 2.2 running on Windows 2008 32-bit with Oracle 11gR2

User Requirements

User Requirements to Install Toad

Only Windows Administrators and Power Users can install Toad.

Note: The following exceptions exist for Power Users:

- (DB2 only) A Power User can install Toad as long as this user belongs to the DB2ADMNS or DBUSERS group.

If an Administrator installs Toad, the Administrator can share the Toad shortcut icon on the desktop and menu items with any user—a Power User, Restricted User—on the computer.

If a Power User installs Toad, a Restricted User cannot do the following:

- Associate file extensions.
- View the Toad shortcut icon on the desktop or the Toad menu options in the Windows Start menu. As a workaround, Restricted Users can create a shortcut to Toad from the install directory and place the shortcut on their desktop.

User Requirements and Restrictions for Running Toad

The following describes the requirements and restrictions for users who launch and run Toad:

- (DB2 only) A Windows Power User or Restricted User must belong to the DB2ADMNS or DB2USERS group. To add the user to one of these groups, select **Start | Control Panel | Administrative Tools | Computer Management | System Tools | Local Users and Groups | Groups | DB2ADMNS or DB2USERS**.
- (DB2 only) A Windows Power User or Restricted User does not have the authority to add or remove DB2 catalog entries using the Toad Client Configuration wizard. However, these users can use the Import Profile function in the Toad Client Configuration wizard to import catalog entries to Toad.
- (DB2 only) To take full advantage of Toad for DB2 LUW functionality, the user ID specified in the Toad connection profile for each DB2 for LUW database connection requires the authorizations listed in the following link:
[DB2 LUW connectivity user requirements and restrictions](#)
- (DB2 only) As a minimum requirement to manage a DB2 for z/OS subsystem in Toad, the user ID defined in the Toad connection profile for the subsystem must either have SYSADM privileges or SELECT privileges on the DB2 catalog tables. For a complete list of authorizations (and corresponding GRANT statements) a user requires to take full advantage of Toad for DB2 z/OS functionality, refer to the following link:
[DB2 z/OS connectivity user requirements and restrictions](#)
- To create or modify the QuestSoftware.ToadSecurity table to enable Toad Security, the user who maintains this table must have privileges to create, insert, update, and delete it. All other users need only the ability to read the QuestSoftware.ToadSecurity table to use Toad Security features.

Resolved Issues and Enhancements

The following is a list of issues addressed and enhancements implemented in this release of Toad Data Studio:

Resolved Issues in 2.0

Feature	Resolved Issue	Defect ID
Table Viewer	Check constraints tab in Viewer Table shows an error when trying to load information on check constraints	IMTDS-1566
Connection Manager	"Failed to log in" error will be shown when the IPV6 is used from the Ethernet Properties	IMTDS-2525
Script Generation	Multiple parameters are incorrect or missing in the partitioned table DDL script for the Azure SQL Server	IMTDS-2084
Script Generation	Executing Function on TDS 1.0 removes the header's comment	IMTDS-2085
Schema Compare	"Problem with load IndexedColumns" error is encountered when comparing on MS SQL Azure two SQL tables where source SQL table includes partition function and partition scheme	IMTDS-2014
Connection	The issue occurs when the 'Create New Connection' button is clicked and the scaling is set to 125%: Glitches are present, and the Group display is missing.	IMTDS-2455
Results(XML/JSON Editor)	Unable to save changes in XML entry after switching to Column tab in the Data grid.	IMTDS-1664
Feature	Enhancement	Defect ID
Connection	Toad Data Studio now supports the Azure SQL Managed Instance Cloud database using the Windows authentication for Microsoft Entra principals. Limitations: the following features/functionality are not	TSS-2096

Feature	Resolved Issue	Defect ID
	supported: <ul style="list-style-type: none"> • Creating firewall rules • Copying database (create like database) operation • Creating an assembly from a file • Server compare functionality 	
Code Completion	The Code Completion window now opens at the upper side when the cursor is at the bottom of the screen.	TSS-1984

Known Issues

The following is a list of issues known to exist at the time of this release.

Feature	Known Issue	Defect ID
Schema Compare	Loading of objects in the Schema Compare wizard takes too long for Oracle data source	IMTDS-1194
Source Control	The loading of objects, refreshing Action Center, and committing changes to the repository for an Oracle database takes too long.	IMTDS-1189
Source Control	Unable to link database to Source Control when using an RSA key with a GitHub repository.	IMTDS-1196
Object Explorer	Toad Data Studio closes unexpectedly when navigating between tables with XML data in Object Explorer on an Oracle connection.	IMTDS-1698
Results (Object Explorer)	Toad Data Studio closes unexpectedly after editing and saving XML data in Oracle.	IMTDS-1625
Results	"System.Runtime.InteropServices.COMException" error is encountered when the Explain Plan tab is selected from the Results section on a PostgreSQL connection.	IMTDS-1478

Third Party Known Issues

The following is a list of third party issues known to exist at the time of release of Toad Data Studio 2.0.

Feature	Platform	Known Issue	ID
Connect to Database	DB2	If you are using the DB2 Client version 9.5, 9.7, or 10.1 in a Windows 8 or Windows Server 2012 environment, follow the instructions in IBM DB2 Technote 1618434: http://www-01.ibm.com/support/docview.wss?uid=swg21618434 .	N/A
Connect to Database	Excel	The following error is encountered when attempting to create a connection to an extremely large Excel file (for example, 20 MB or larger): "Microsoft. ODBC Excel Driver. System resource exceeded." For more information, see https://forums.toadworld.com/t/error-in-importing-large-excel-files/26457/9 .	N/A

Feature	Platform	Known Issue	ID
		Workaround: Convert the Excel file to a CSV file.	
Connect to Database	Oracle	(Oracle 10.2.0.1 client only) Attempting to connect to an Oracle database From Toad using the 10.2.0.1 Oracle client results in the following error: "ORA-24909: call in progress. Current operation canceled". This is a known issue with this Oracle client. Workaround: Upgrade your Oracle client to a later version and connect to the Oracle database.	N/A
Connect to Database	Oracle 11 only	When connecting to Oracle 11, you must enter the password in the proper case because passwords are case-sensitive.	N/A
Data	ODBC- DB2 z/OS	In compatibility mode, the ODBC driver does not return enough information for the CommandBuilder to correctly generate update or insert statements.	N/A
Editor	Teradata	If you experience performance issues using a Teradata connection, especially when using code completion in the Editor, use the Teradata Non-X views (instead of the X views). To use Teradata Non-X views <ul style="list-style-type: none"> Select Tools Options Database Teradata and select the Use Non-X views in Object Explorer option. 	N/A
Export Wizard/ One Click Export	All	To export to an Office 2003 or 2007 Excel instance, the Office Primary Interop Assemblies (PIAs) must be installed.	N/A
Export Wizard/ One Click Export	Excel	Avoid using Excel for exporting if your data has numeric values that require a high precision because Excel's precision is limited to 15 digits. If you export numbers with more precision, the values are rounded. If you export boundary numbers (max, min), rounded numbers will exceed the data type limit.	N/A
Import Wizard	DB2	When importing data using the Add Query feature and selecting a Single new table, TIMESTAMP data types are mapped to DATETIME data types.	N/A
Object Explorer	Cloudera Impala	A view is represented as a table in Impala, so views display as tables in Toad. For more information, see https://issues.cloudera.org/browse/IMPALA-1697 .	N/A
Object Explorer/ Database Explorer	Teradata	You may experience issues if you attempt to view object details and your Teradata .Net Data Provider version does not correspond to the Teradata database version to which you are connecting. Issues include: <ul style="list-style-type: none"> Object details for a View containing a DATE data type column do not display. Object details for a Table containing a NUMBER data type column do not display. Workaround: Install the Teradata .Net Data Provider version that corresponds with the Teradata database version to which you are connecting. For example, if connecting to Teradata database version 14, use	N/A

Feature	Platform	Known Issue	ID
		Teradata .Net Data Provider 14.11.	
Object Explorer/ Database Explorer	DB2 iSeries	The primary Key column of an iSeries table displays as Nullable in the Database Explorer even though the Not Null checkbox was not selected when creating the table.	N/A
Query Builder	Sybase ASE	<p>Cross-connection query: Sybase has difficulty dealing with numeric literals in queries. You may encounter the following error:</p> <pre>Implicit conversion from datatype 'CHAR' to 'INT' is not allowed. Use the CONVERT function to run this query.</pre> <p>when attempting to execute a cross-connection query such as:</p> <pre>Select * from table where numeric_column = 50</pre> <p>Work-around: Change the query to something similar to the following using the cast function:</p> <pre>Select * from table where numeric_column = CAST(50 AS SIGNED)</pre>	ST96868
Query Builder	Cassandra and Excel/Access	<p>Cross-connection query: A query between Cassandra and either Excel 2010 or Access 2010 might fail to execute and display a lost-connection error.</p> <p>Workaround: Upgrade to Excel 2013 or Access 2013 (or later).</p>	N/A

Getting Started

Contents of the Release Package

The Toad release package contains the following products:

1. Toad Data Studio 2.0
2. Product Documentation, including:
 - Installation Guide
 - Release Notes
 - User Guide

Installation Instructions

See the *Toad Data Studio Installation Guide* for more information.

Product Licensing

Toad Data Studio with online licensing

To activate a trial license

Sign in with existing Quest.com account

1. Select Sign In Online and enter your account email address and password
2. If you already have a Toad Data Studio license, no further action is needed
3. If you do not have a Toad Data Studio license, see "Activating a new license" below

Create a new Quest.com account

1. Select **Sign up for a new account**
2. Enter your account details and select **Sign Up**
3. A confirmation email is sent containing a verification code
4. Enter the code from the email and select **Verify**

NOTE:

- It may take a few minutes for the verification email to arrive
- Check your spam/junk folders for the email sent from supportadmin@quest.com if you do not receive it
- For additional assistance, please contact Quest support

Activating a new license

1. Toad Data Studio Subscription automatically provides a fully functioning, 30-day Trial license
2. To purchase a new license, click Buy Now from Toad's title bar
3. After completing your transaction, see "Offline license activation using license file" below to activate your commercial license

Toad Data Studio with offline licenses using license file

To activate a trial or purchased commercial license

1. Check email sent from Quest licensing team and download "license.dlv" file.
2. Start Toad Data Studio
3. Use the Import File option to navigate to the license file. Select "license.dlv".
Toad will automatically import the file to appropriate path %AppData%\Local\Quest\Toad Data Studio Licensing.

NOTE:

- You can download the trial file from the [trial download web page](#), accessed through the product page
- You can view your licenses from within Toad by selecting **Help | About**

Toad Data Studio Subscription with online licensing

Toad Data Studio Subscription requires you to sign in with your Quest.com account. Licenses are tied to your account giving you the flexibility to use Toad from multiple computers without having to move your license.

Sign in with existing Quest.com account

1. Select Sign In Online and enter your account email address and password
2. If you already have a Toad Data Studio Subscription license, no further action is needed
3. If you do not have a Toad Data Studio Subscription license, see "Activating a new license" below

Create a new Quest.com account

1. Select **Sign up for a new account**
2. Enter your account details and select **Sign Up**
3. A confirmation email is sent containing a verification code
4. Enter the code from the email and select **Verify**

NOTE:

- It may take a few minutes for the verification email to arrive
- Check your spam/junk folders for the email sent from supportadmin@quest.com if you do not receive it
- For additional assistance, please contact Quest support

Activating a new license

1. Toad Data Studio Subscription automatically provides a fully functioning, 30-day Trial license
2. To purchase a new license, click Buy Now from Toad's title bar
3. After completing your transaction, restart Toad and your license is automatically detected. Alternatively, use Refresh License option from the top right Account menu or **Help | About** window to activate your commercial license.
4. To manage licenses, select Manage licenses online beneath your account shown at the top-right of Toad

NOTE: You can view your licenses from within Toad by selecting **Help | About**

Globalization

This section contains information about installing and operating this product in non-English configurations, such as those needed by customers outside of North America. This section does not replace the materials about supported platforms and configurations found elsewhere in the product documentation.

This release is Unicode-enabled and supports any character set. It supports simultaneous operation with multilingual data. This release is targeted to support operations in the following regions: North America, Western Europe and Latin America, Central and Eastern Europe, Far-East Asia, Japan.

This release has the following known capabilities or limitations: If the user overrides the default installation path during installation, the new path specification cannot contain Unicode characters.

About Us

Quest creates software solutions that make the benefits of new technology real in an increasingly complex IT landscape. From database and systems management, to Active Directory and Office 365 management, and cyber security resilience, Quest helps customers solve their next IT challenge now. Around the globe, more than 130,000 companies and 95% of the Fortune 500 count on Quest to deliver proactive management and monitoring for the next enterprise initiative, find the next solution for complex Microsoft challenges and stay ahead of the next threat. Quest Software. Where next meets now. For more information, visit www.quest.com.

Contact Quest

For sales or other inquiries, visit www.quest.com/contact.

Technical Support Resources

Technical support is available to Quest customers with a valid maintenance contract and customers who have trial versions. You can access the Quest Support Portal at <https://support.quest.com>.

The Support Portal provides self-help tools you can use to solve problems quickly and independently, 24 hours a day, 365 days a year. The Support Portal enables you to:

- Submit and manage a Service Request
- View Knowledge Base articles
- Sign up for product notifications

- Download software and technical documentation
- View how-to-videos
- Engage in community discussions
- Chat with support engineers online
- View services to assist you with your product

Copyright

© 2025 Quest Software Inc.
ALL RIGHTS RESERVED.

This guide contains proprietary information protected by copyright. The software described in this guide is furnished under a software license or nondisclosure agreement. This software may be used or copied only in accordance with the terms of the applicable agreement. No part of this guide may be reproduced or transmitted in any form or by any means, electronic or mechanical, including photocopying and recording for any purpose other than the purchaser's personal use without the written permission of Quest Software Inc.

The information in this document is provided in connection with Quest Software products. No license, express or implied, by estoppel or otherwise, to any intellectual property right is granted by this document or in connection with the sale of Quest Software products. EXCEPT AS SET FORTH IN THE TERMS AND CONDITIONS AS SPECIFIED IN THE LICENSE AGREEMENT FOR THIS PRODUCT, QUEST SOFTWARE ASSUMES NO LIABILITY WHATSOEVER AND DISCLAIMS ANY EXPRESS, IMPLIED OR STATUTORY WARRANTY RELATING TO ITS PRODUCTS INCLUDING, BUT NOT LIMITED TO, THE IMPLIED WARRANTY OF MERCHANTABILITY, FITNESS FOR A PARTICULAR PURPOSE, OR NON-INFRINGEMENT. IN NO EVENT SHALL QUEST SOFTWARE BE LIABLE FOR ANY DIRECT, INDIRECT, CONSEQUENTIAL, PUNITIVE, SPECIAL OR INCIDENTAL DAMAGES (INCLUDING, WITHOUT LIMITATION, DAMAGES FOR LOSS OF PROFITS, BUSINESS INTERRUPTION OR LOSS OF INFORMATION) ARISING OUT OF THE USE OR INABILITY TO USE THIS DOCUMENT, EVEN IF QUEST SOFTWARE HAS BEEN ADVISED OF THE POSSIBILITY OF SUCH DAMAGES. Quest Software makes no representations or warranties with respect to the accuracy or completeness of the contents of this document and reserves the right to make changes to specifications and product descriptions at any time without notice. Quest Software does not make any commitment to update the information contained in this document.

If you have any questions regarding your potential use of this material, contact:

Quest Software Inc.
Attn: LEGAL Dept
4 Polaris Way
Aliso Viejo, CA 92656

Refer to our web site (www.quest.com) for regional and international office information.

Patents

Quest Software is proud of our advanced technology. Patents and pending patents may apply to this product. For the most current information about applicable patents for this product, please visit our website at www.quest.com/legal.

This product includes patent pending technology. For the most current information about applicable patents for this product, please visit our website at www.quest.com/legal.

Trademarks

Quest, Quest Software, Benchmark Factory, Spotlight, LiteSpeed, SQL Navigator, vWorkspace, Toad, and the Quest logo are trademarks of Quest Software Inc. in the U.S.A. and other countries. For a complete list of Quest Software trademarks, please visit our website at www.quest.com/legal. Microsoft, Windows, Windows Server, Visual Studio, SQL Server, SharePoint, Access and Excel are either registered trademarks or trademarks of Microsoft Corporation in the United States and/or other countries. Oracle is a trademark or registered trademark of Oracle and/or its affiliates in the United States and other countries. Citrix® and XenApp™ are trademarks of Citrix Systems, Inc. and/or one or more of its subsidiaries, and may be registered in the United States Patent and Trademark Office and in other countries. SAP is the registered trademark of SAP AG in Germany and in several other countries. IBM and DB2 are registered trademarks of International Business Machines Corporation. MySQL is a registered trademark of MySQL AB in the United States, the European Union and other countries. Google and Google Analytics are registered trademarks of Google Inc. PostgreSQL is a registered trademark of the PostgreSQL Community Association of Canada. Subversion is a trademark of the Apache Software Foundation. Snowflake® is a registered trademark of Snowflake Inc. in the United States and/or other countries. All other trademarks, servicemarks, registered trademarks, and registered servicemarks are property of their respective owners.

