

Foglight® Resource Optimizer for Hyper-
V Environments 7.1.0

User Guide



© 2023 Quest Software Inc.

ALL RIGHTS RESERVED.

This guide contains proprietary information protected by copyright. The software described in this guide is furnished under a software license or nondisclosure agreement. This software may be used or copied only in accordance with the terms of the applicable agreement. No part of this guide may be reproduced or transmitted in any form or by any means, electronic or mechanical, including photocopying and recording for any purpose other than the purchaser's personal use without the written permission of Quest Software Inc.

The information in this document is provided in connection with Quest Software products. No license, express or implied, by estoppel or otherwise, to any intellectual property right is granted by this document or in connection with the sale of Quest Software products. EXCEPT AS SET FORTH IN THE TERMS AND CONDITIONS AS SPECIFIED IN THE LICENSE AGREEMENT FOR THIS PRODUCT, QUEST SOFTWARE ASSUMES NO LIABILITY WHATSOEVER AND DISCLAIMS ANY EXPRESS, IMPLIED OR STATUTORY WARRANTY RELATING TO ITS PRODUCTS INCLUDING, BUT NOT LIMITED TO, THE IMPLIED WARRANTY OF MERCHANTABILITY, FITNESS FOR A PARTICULAR PURPOSE, OR NON-INFRINGEMENT. IN NO EVENT SHALL QUEST SOFTWARE BE LIABLE FOR ANY DIRECT, INDIRECT, CONSEQUENTIAL, PUNITIVE, SPECIAL OR INCIDENTAL DAMAGES (INCLUDING, WITHOUT LIMITATION, DAMAGES FOR LOSS OF PROFITS, BUSINESS INTERRUPTION OR LOSS OF INFORMATION) ARISING OUT OF THE USE OR INABILITY TO USE THIS DOCUMENT, EVEN IF QUEST SOFTWARE HAS BEEN ADVISED OF THE POSSIBILITY OF SUCH DAMAGES. Quest Software makes no representations or warranties with respect to the accuracy or completeness of the contents of this document and reserves the right to make changes to specifications and product descriptions at any time without notice. Quest Software does not make any commitment to update the information contained in this document.

If you have any questions regarding your potential use of this material, contact:

Quest Software Inc.
Attn: LEGAL Dept.
4 Polaris Way
Aliso Viejo, CA 92656

Refer to our website (<https://www.quest.com>) for regional and international office information.

Patents

Quest Software is proud of our advanced technology. Patents and pending patents may apply to this product. For the most current information about applicable patents for this product, please visit our website at <https://www.quest.com/legal>.

Trademarks

Quest, the Quest logo, and Join the Innovation are trademarks and registered trademarks of Quest Software Inc. For a complete list of Quest marks, visit <https://www.quest.com/legal/trademark-information.aspx>. "Apache HTTP Server", Apache, "Apache Tomcat" and "Tomcat" are trademarks of the Apache Software Foundation. Google is a registered trademark of Google Inc. Android, Chrome, Google Play, and Nexus are trademarks of Google Inc. Red Hat, JBoss, the JBoss logo, and Red Hat Enterprise Linux are registered trademarks of Red Hat, Inc. in the U.S. and other countries. CentOS is a trademark of Red Hat, Inc. in the U.S. and other countries. Fedora and the Infinity design logo are trademarks of Red Hat, Inc. Microsoft, .NET, Active Directory, Internet Explorer, Hyper-V, Office 365, SharePoint, Silverlight, SQL Server, Visual Basic, Windows, Windows Vista and Windows Server are either registered trademarks or trademarks of Microsoft Corporation in the United States and/or other countries. AIX, IBM, PowerPC, PowerVM, and WebSphere are trademarks of International Business Machines Corporation, registered in many jurisdictions worldwide. Java, Oracle, Oracle Solaris, PeopleSoft, Siebel, Sun, WebLogic, and ZFS are trademarks or registered trademarks of Oracle and/or its affiliates in the United States and other countries. SPARC is a registered trademark of SPARC International, Inc. in the United States and other countries. Products bearing the SPARC trademarks are based on an architecture developed by Oracle Corporation. OpenLDAP is a registered trademark of the OpenLDAP Foundation. HP is a registered trademark that belongs to Hewlett-Packard Development Company, L.P. Linux is a registered trademark of Linus Torvalds in the United States, other countries, or both. MySQL is a registered trademark of MySQL AB in the United States, the European Union and other countries. Novell and eDirectory are registered trademarks of Novell, Inc., in the United States and other countries. VMware, ESX, ESXi, vSphere, vCenter, vMotion, and vCloud Director are registered trademarks or trademarks of VMware, Inc. in the United States and/or other jurisdictions. Sybase is a registered trademark of Sybase, Inc. The X Window System and UNIX are registered trademarks of The Open Group. Mozilla and Firefox are registered trademarks of the Mozilla Foundation. "Eclipse", "Eclipse Foundation Member", "EclipseCon", "Eclipse Summit", "Built on Eclipse", "Eclipse Ready", "Eclipse Incubation", and "Eclipse Proposals" are trademarks of Eclipse Foundation, Inc. IOS is a registered trademark or trademark of Cisco Systems, Inc. and/or its affiliates in the United States and certain other countries. Apple, iPad, iPhone, Mac OS, Safari, Swift, and Xcode are trademarks of Apple Inc., registered in the U.S. and other countries. Ubuntu is a registered trademark of Canonical Ltd. Symantec and Veritas are trademarks or registered trademarks of Symantec Corporation or its affiliates in the U.S. and other countries. OpenSUSE, SUSE, and YAST are registered trademarks of SUSE LCC in the United States and other countries. Citrix, AppFlow, NetScaler, XenApp, and XenDesktop are trademarks of Citrix Systems, Inc. and/or one or more of its subsidiaries, and may be registered in the United States Patent and Trademark Office and in other countries. AlertSite and DéjàClick are either trademarks or registered trademarks of Boca Internet Technologies, Inc. Samsung, Galaxy S, and Galaxy Note are registered trademarks of Samsung Electronics America, Inc. and/or its related entities. MOTOROLA is a registered trademark of Motorola Trademark Holdings, LLC. The Trademark BlackBerry Bold is owned by Research In Motion Limited and is registered in the United States and may be pending or registered in other countries. Quest is not endorsed, sponsored, affiliated with or otherwise authorized by Research In Motion Limited. Ixia and the Ixia four-petal logo are registered trademarks or trademarks of Ixia. Opera, Opera Mini, and the O logo are trademarks of Opera Software ASA. Tevron, the Tevron logo, and CitraTest are registered trademarks of Tevron, LLC. PostgreSQL is a registered trademark of the PostgreSQL Global Development Group. MariaDB is a trademark or registered trademark of MariaDB Corporation Ab in the European Union and United States of America and/or other countries. Vormetric is a registered trademark of Vormetric, Inc. Intel, Itanium, Pentium, and Xeon are trademarks of Intel Corporation in the U.S. and/or other countries. Debian is a registered trademark of Software in the Public Interest, Inc. OpenStack is a trademark of the OpenStack Foundation. Amazon Web Services, the "Powered by Amazon Web Services" logo, and "Amazon RDS" are trademarks of Amazon.com, Inc. or its affiliates in the United States and/or other countries. Infobright, Infobright Community Edition and Infobright Enterprise Edition are trademarks of Infobright Inc. POLYCOM®, RealPresence® Collaboration Server, and RMX® are registered trademarks of Polycom, Inc. All other trademarks and registered trademarks are property of their respective

owners.

Legend

- **WARNING:** A WARNING icon indicates a potential for property damage, personal injury, or death.
- ! **CAUTION:** A CAUTION icon indicates potential damage to hardware or loss of data if instructions are not followed.
- ! **IMPORTANT NOTE, NOTE, TIP, MOBILE, or VIDEO:** An information icon indicates supporting information.

Foglight Resource Optimizer for Hyper-V Environments User Guide
Foglight Version - 7.1.0
Cartridge Version - 7.1.0

Contents

Get started with Foglight Resource Optimizer	5
Installation requirements	5
Configuring a service account for Hyper-V Performance Agent	5
Create a Role	6
Assign a user account to the Role	6
Enable optional privileges for resource optimization	7
Credentials required for optimization	8
Data collection	9
Working in a federated environment	9
Dashboard location	9
Optimize your virtual environment using Foglight Resource Optimizer	10
Total Potential Savings	11
Category Selector bar	11
VM Resources	12
CPU	13
Memory	14
Storage	14
Abandoned VM Images	17
Powered Off VMs	18
Unused Template Images	18
Snapshots	18
Potential Zombie VMs	19
VM Configuration	20
Change History view	21
Optimizer Actions bar	21
Settings	22
Scheduled Actions	26
Automate	27
Reclaiming Savings bar	28
Reclaiming resources	29
Excluding objects	29
Viewing excluded objects	29
Foglight Resource Optimizer reports	29
Investigate resource efficiency	31
About Us	33
We are more than just a name	33
Our brand, our vision. Together.	33
Contacting Quest	33
Technical support resources	33

Get started with Foglight Resource Optimizer

This guide provides instructions and information about using Foglight® Resource Optimizer to optimize CPU, memory, and network consumption, and project storage requirements in virtualized environments. This guide is intended for IT managers who want to monitor and optimize virtualized environments by using the waste-finding and right-sizing functionality that this product provides.

Virtual machines (VMs) are quickly becoming the industry standard in IT infrastructures. IT managers find themselves with hundreds, if not thousands of VMs or physical machine hosts in their infrastructures. VMs can be added quickly, making it necessary to plan for the addition of virtual machines to the physical machines that host them. This situation can be a challenge for administrators. IT managers lack the required tools to accurately optimize CPU, memory, and network consumption, or project storage requirements. Monitoring virtual machine environments with Foglight Resource Optimizer simplifies the optimization process, providing waste-finding and right-sizing functionality for virtualized environments.

This section introduces you to Foglight Resource Optimizer environment, and provides you with essential foundational information.

For detailed information about Foglight for Hyper-V and how it monitors HyperV® virtual environments, see the *Foglight for Hyper-V User and Reference Guide*.

For more information, review the following topics:

- [Installation requirements](#)
- [Configuring a service account for Hyper-V Performance Agent](#)
- [Credentials required for optimization](#)
- [Data collection](#)
- [Dashboard location](#)

Installation requirements

Foglight Resource Optimizer comes installed on Foglight Evolve and can be installed on a Foglight Management Server.

For more information about installing Foglight Resource Optimizer, and for details about system requirements and version compatibility, see the *Foglight Resource Optimizer Release Notes*.

Configuring a service account for Hyper-V Performance Agent

Follow this procedure if your environment includes a Foglight Resource Optimizer. For environments that do not include this cartridge, refer to the “Enabling Hyper-V Performance Agents to collect data from a Virtual Center” in the *Foglight for Hyper-V Installation Guide*.

To configure a service account for Hyper-V Performance Agent:

- 1 [Create a Role](#)
- 2 [Assign a user account to the Role](#)
- 3 [Enable optional privileges for resource optimization](#)

Create a Role

To create a Role:

- 1 In the Hyper-V Virtual Infrastructure Client home screen, select the **Administration** tab and click **Roles**.

The following privileges are the minimum required for monitoring (Hyper-V Performance agent for data collection). Additional privileges are required to automate the resource optimization (for HyperV[®] environments).

i | **IMPORTANT:** The following privileges are the minimum required for monitoring (Hyper-V Performance agent for data collection). Additional privileges are required to automate the resource optimization (for HyperV[®] environments).

- 2 Click on the **Add Roll** button.
- 3 In the **Add Role** dialog box, in the **Enter Name** box, type the name of the role you want to add.
- 4 Expand the **Datastore** node and select **Browse Datastores**.
- 5 Expand the **Performance** node and select **Modify intervals**.
- 6 Expand the **Sessions** node and select **View and Terminate Sessions**.
- 7 Click **OK** to close the **Add Role** dialog.

Assign a user account to the Role

To assign a user account to a Role:

- 1 In the Hyper-V Virtual Infrastructure Client, on the toolbar, click **Inventory**.
The **Inventory** screen appears.
- 2 In the left pane, right-click **Hosts & Clusters**, and select the root item in the tree, the Virtual Center object.
- 3 Right click and select **Add Permission**.
- 4 In the **Assign Permissions** dialog box, in the **Assigned Role** area, select the role you just created.
- 5 Ensure that the **Propagate to Child Objects** check box is selected.
- 6 In the **Users and Groups** area, click **Add**.
The **Select Users** dialog box appears.
- 7 Assign the selected role to a user account that will be configured for monitoring (user account that you want the Hyper-V Performance Agent to use for accessing the Virtual Center), and click **Add**.
- 8 Click **OK**.
The **Select Users** dialog box closes.
- 9 When creating the Hyper-V Performance agent, use the user account assigned to the new Role.

Enable optional privileges for resource optimization

To enable automated resource optimization, the service account requires additional privileges. The following permissions should be added to the Role you just created.

Table 1. Permissions required for resource optimization

Required Permission	CPU	Memory	Storage	Abandoned VM images	Snapshots	Zombie VMs	Duplicate UUIDs or VMIDs
Datastore > Allocate space	No	No	Yes	No	No	No	No
Datastore > Browse Datastore	Yes	Yes	Yes	Yes	Yes	Yes	No
Datastore > Low-level file operations	No	No	Yes	Yes	No	No	No
Scheduled Task > Create task	Yes	Yes	No	Yes	Yes	Yes	Yes
Scheduled Task > Delete task	Yes	Yes	No	Yes	Yes	Yes	Yes
Scheduled Task > Run task	Yes	Yes	No	Yes	Yes	Yes	Yes
Virtual Machine > Configuration > Add existing disk	No	No	Yes	No	No	No	No
Virtual Machine > Configuration > Add new disk	No	No	Yes	No	No	No	No
Virtual Machine > Configuration > Add or remove device	No	No	Yes	No	No	No	No
Virtual Machine > Configuration > Advanced	No	No	Yes	No	No	No	No
Virtual Machine > Configuration > Change CPU Count	Yes	No	No	No	No	No	No
Virtual Machine > Configuration > Change Resource	Yes	Yes	Yes	Yes	Yes	Yes	No
Virtual Machine > Configuration > Extend virtual disk	No	No	Yes	No	No	No	No
Virtual Machine > Configuration > Memory	No	Yes	No	No	No	No	No

Table 1. Permissions required for resource optimization

Required Permission	CPU	Memory	Storage	Abandoned VM images	Snapshots	Zombie VMs	Duplicate UUIDs or VMIDs
Virtual Machine > Configuration > Modify device settings	No	No	Yes	No	No	No	No
Virtual Machine > Configuration > Remove disk	No	No	Yes	No	No	No	No
Virtual Machine > Configuration > Settings	No	No	No	No	No	No	Yes
Virtual Machine > Interaction > Configure CD Media	No	No	Yes	No	No	No	No
Virtual Machine > Interaction > Device Connection	No	No	Yes	No	No	No	No
Virtual Machine > Interaction > Power Off	Yes	Yes	Yes	Yes	Yes	Yes	No
Virtual Machine > Interaction > Power On	Yes	Yes	Yes	Yes	Yes	Yes	No
Virtual Machine > Snapshot management > Remove Snapshot	No	No	Yes	No	No	No	No
NOTE: For vCenter®5.1 and later versions							
Virtual Machine > State > Remove Snapshot	No	No	Yes	No	No	No	No
NOTE: For vCenter® versions prior to 5.1							

Credentials required for optimization

Foglight Resource Optimizer provides recommendations for changes in the HyperV® environment to make more efficient use of resources. As a prerequisite, a Hyper-V agent must be configured with a user that has elevated privileges, beyond the read-only privileges required for monitoring.

For a list of privileges required for the Hyper-V agent, see section “Configuring Monitoring Agents for Data Collection” in the *Foglight for Hyper-V User and Reference Guide*.

Credentials groups for resource optimization can be defined using the [Credentials tab](#).

Data collection

The Optimizer dashboard automatically displays the virtual machine hosts (HyperV® target machines) that Foglight or Foglight for Virtualization, Enterprise Edition monitors, for which resource optimization recommendations are provided. No further setup is required.

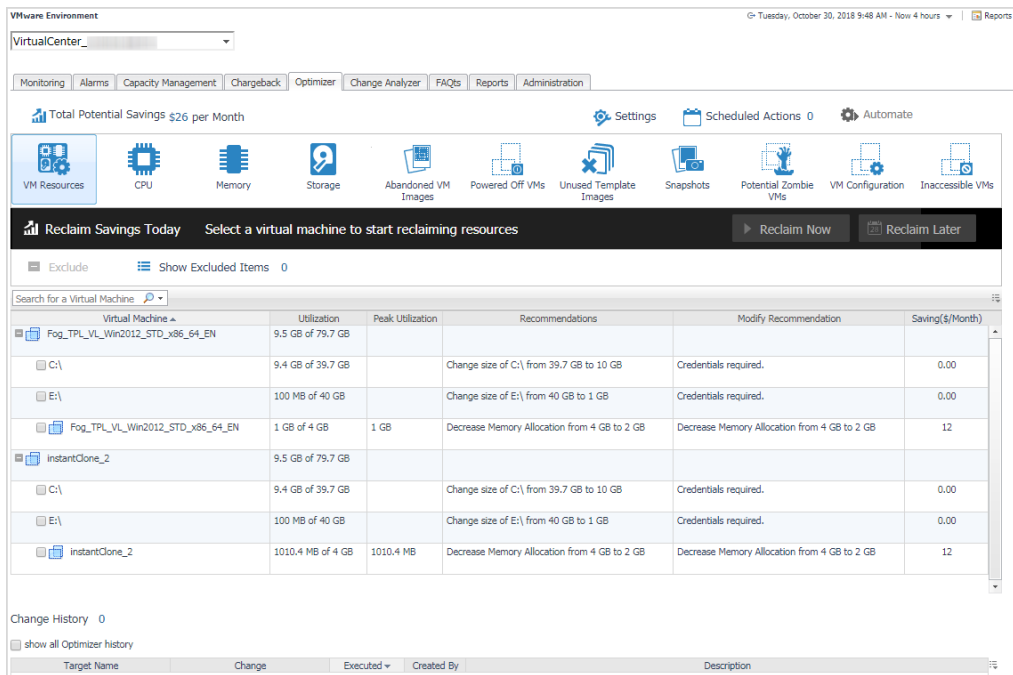
Working in a federated environment

Each Federated Child should be configured to monitor its own unique environment. There should be no overlap between the monitored environments, such that no two Federated Children are monitoring the same nodes (VM, Server, Datastore, etc.). Incorrect configuration results in topology churn on the Foglight Federation Master.

Dashboard location

After installing Foglight Resource Optimizer, the Optimizer tab appears in the Hyper-V Environment dashboard.

Figure 1. Optimizer dashboard location



To access the Optimizer dashboard:

- 1 Log in to the Foglight or Foglight for Virtualization, Enterprise Edition browser interface.
- 2 On the navigation panel, under Dashboards, click **Hyper-V > Hyper-V Environment > Optimizer** tab.

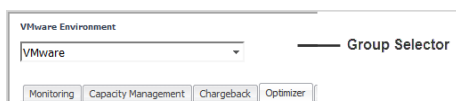
Optimize your virtual environment using Foglight Resource Optimizer

This section provides instructions and information about using Foglight Resource Optimizer to optimize CPU, memory, network consumption, and project storage requirements in virtualized environments.

For detailed information about Foglight for Hyper-V/Hyper-V and how it monitors VMware® virtual environments, see the *Foglight for Hyper-V User and Reference Guide*.

The Optimizer provides a broad platform of categories to optimize your virtual environment. You begin this process by using the Group Selector, located in the upper left section of the Hyper-V Environment dashboard, to select the required VM object.

Figure 2. Group Selector



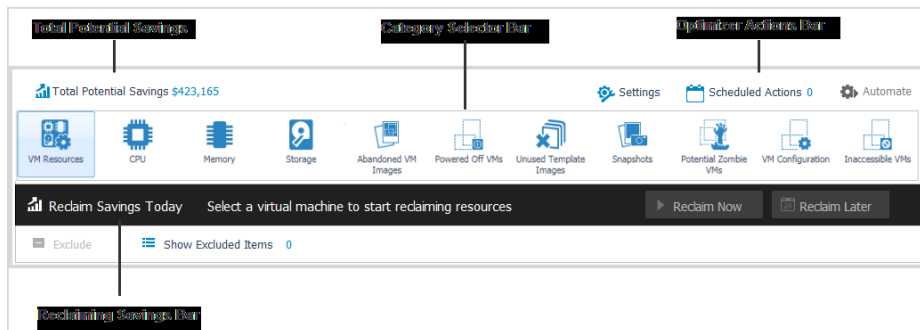
The Optimizer tab is refreshed to display the selected group in the Virtual Machines table.

The Virtual Machines table shows only the recommendations for the selected VM category, only for the VMs that are not excluded from the optimization list. For example, if a user excluded a VM from “CPU”, this VM is not displayed on the Virtual Machines table for CPU. It is displayed on the other categories for which recommendations are provided.

After selecting a group, use the Category Selector View to begin optimization of your virtual environment. This view contains the following sections:

- Total Potential Savings
- Category Selector bar
- Optimizer Actions bar
- Reclaiming Savings bar

Figure 3. Category Selector view



Foglight Resource Optimizer comes with a set of pre-defined report templates that can be run from the Reports dashboard (**Dashboards > Reports**). Using this dashboard, operators can run reports, build custom reports, and

view generated reports. Advanced Operators can also schedule and manage reports. For a list of pre-defined report templates provided for Foglight Resource Optimizer, see [Foglight Resource Optimizer reports](#).

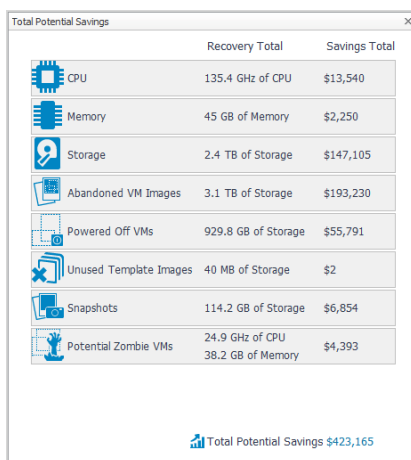
Foglight for Virtualization, Enterprise Edition users can also investigate the resources' efficiency and optimize the virtual environment via the Environment Overview dashboard. For more information, see [Investigate resource efficiency](#).

Total Potential Savings

Total Potential Savings is the resource savings multiplied by the cost of the resource (“resource savings” x “the cost of the resource”). The Optimizer automatically calculates the savings for the selected VM object.

Click **Total Potential Savings** to open the Total Potential Savings dialog box, which lays out the total potential savings by VM component.

Figure 4. Total Potential Savings dialog box



	Recovery Total	Savings Total
CPU	135.4 GHz of CPU	\$13,540
Memory	45 GB of Memory	\$2,250
Storage	2.4 TB of Storage	\$147,105
Abandoned VM Images	3.1 TB of Storage	\$193,230
Powered Off VMs	929.8 GB of Storage	\$55,791
Unused Template Images	40 MB of Storage	\$2
Snapshots	114.2 GB of Storage	\$6,854
Potential Zombie VMs	24.9 GHz of CPU 38.2 GB of Memory	\$4,393

Total Potential Savings \$423,165

The dialog box includes the following information:

- VM component
- **Recovery Total.** Shows the total amount of optimization that can be performed for each VM component.
- **Savings Total.** Shows the total amount of savings for each VM component.

Category Selector bar

The Category Selector bar allows you to select VM components for optimization:

- [VM Resources](#)
- [CPU](#)
- [Memory](#)
- [Storage](#)
- [Abandoned VM Images](#)
- [Powered Off VMs](#)
- [Unused Template Images](#)
- [Snapshots](#)

- [Potential Zombie VMs](#)
- [VM Configuration](#)

VM Resources

The **VM Resources** category includes all CPU, memory, and storage recommendations for optimizing a particular VM. You can review them all in one tab, instead of going through the [CPU](#), [Memory](#), and [Storage](#) tabs. This option allows you to coordinate the recommendations for that VM and reboot the machine once instead of three times.

For a list of requirements necessary for Foglight Resource Optimizer to successfully resize the CPU, memory, and storage on virtual machines, see [Enable optional privileges for resource optimization](#).

The VM Resources view includes the following elements:

- [VM Resources optimization table](#)
- [Change History view](#)

Table 2. VM Resources optimization table

Description	This table includes the following information:
	Virtual Machine. Name assigned to the VM.
	Utilization. <ul style="list-style-type: none"> • CPU: Amount of processing speed that each virtual machine uses. • Memory: Amount of memory that each virtual machine uses. • Storage: How much storage is being used compared to the total storage available.
	Peak Utilization. <ul style="list-style-type: none"> • CPU: Highest sustained CPU utilization rate for the VM over a 15-minutes period. • Memory: Highest sustained memory utilization rate for the VM over a 15-minutes period. • Storage: n/a
	Recommendation. <ul style="list-style-type: none"> • CPU: Recommended amount of CPU that users should add or remove for optimization. • Memory: Recommended amount of memory that users should add or remove for optimization. • Storage: Recommended storage size for the VM.

Table 2. VM Resources optimization table

Modify Recommendation.

- CPU: Recommended modifications for the VM's CPU. To change the Optimizer's recommendation, click the link in the cell. In the dialog box that opens, type the new recommended value in the **Change CPU Allocation** field and click **Save**, or click **Reset to Default** to restore the default value.
- Memory: Recommended modifications for the VM's memory. To change the Optimizer's recommendation, click the link in the cell. In the dialog box that opens, type the new recommended value in the **Change Memory Allocation (MB/GB)** field and click **Save**, or click **Reset to Default** to restore the default value.
- Storage: Recommended modifications for the VM's storage. To change the Optimizer's recommendation, click the link in the cell. In the dialog box that opens, type the new recommended value in the **Change Storage Allocation (GB)** field and click **Save**, or click **Reset to Default** to restore the default value.

NOTE: To modify the storage recommendation, users must have administrative privileges. For information about managing optimization credentials, see [Credentials tab](#).

Where to go next	N/A
-------------------------	-----

The **Search** box is located on the top left corner of the table. It allows you to search the environment for a specific virtual machine, by entering the VM name, the disk name, or the partition name in the search box. The VMs matching the search criteria are displayed in the Virtual Machines table.

CPU

The **CPU** category allows you to view utilization rates and peak utilization rates. It provides recommendations for optimizing the CPU for the VM. For a list of requirements necessary for Foglight Resource Optimizer to successfully resize the CPU on virtual machines, see [Enable optional privileges for resource optimization](#).

The CPU view includes the following elements:

- [CPU optimization table](#)
- [Change History view](#)

Table 3. CPU optimization table

Description	This table includes the following information: Virtual Machine. Name assigned to the VM. Utilization. Amount of processing speed that each virtual machine uses. Peak Utilization. Highest sustained CPU utilization rate for the VM over a 15-minutes period. CPU Recommendations. Recommended amount of CPU that users should add or remove for optimization. Modify Recommendation. Recommended modifications for the VM's CPU. To change the Optimizer's recommendation, click the link in the cell. In the dialog box that opens, type the new recommended value in the Change CPU Allocation field and click Save , or click Reset to Default to restore the default value.
Where to go next	N/A

The **Search for a Virtual Machine** box is located on the top left corner of the table. It allows you to search the environment for a specific virtual machine, by entering its name in the search box. The VMs matching the search criteria are displayed in the Virtual Machines table.

Memory

The **Memory** category allows you to view utilization rates and peak utilization rates. It provides recommendations for optimizing the Memory for the VM. For a list of requirements necessary for Foglight Resource Optimizer to successfully resize the memory on virtual machines, see [Enable optional privileges for resource optimization](#).

The Memory view includes the following elements:

- [Memory optimization table](#)
- [Change History view](#)

Table 4. Memory optimization table

Description	This table includes the following information: Virtual Machine. Name assigned to the VM. Utilization. Amount of memory that each virtual machine uses. Peak Utilization. Highest sustained memory utilization rate for the VM over a 15-minutes period. Memory Recommendations. Recommended amount of memory that users should add or remove for optimization. Modify Recommendation. Recommended modifications for the VM's memory. To change the Optimizer's recommendation, click the link in the cell. In the dialog box that opens, type the new recommended value in the Change Memory Allocation (MB/GB) field and click Save , or click Reset to Default to restore the default value.
Where to go next	N/A

The **Search for a Virtual Machine** box is located on the top left corner of the table. It allows you to search the environment for a specific virtual machine, by entering its name in the search box. The VMs matching the search criteria are displayed in the Virtual Machines table.

Storage

The **Storage** category allows you to view how much storage space is provided and how much storage the VM uses. It provides recommendations for optimizing the VM's storage. For a list of requirements necessary for Foglight Resource Optimizer to successfully resize the storage on virtual machines, see [Enable optional privileges for resource optimization](#) and [Requirements for storage resizing](#).

The Storage view includes the following elements:

- [Storage optimization table](#)
- [Change History view](#)

Table 5. Storage optimization table

Description	This table includes the following information: Virtual Machine. Name assigned to the VM. Utilization. How much storage is being used compared to the total storage available. Storage Recommendations. Recommended storage size for the VM.
--------------------	---

Table 5. Storage optimization table

Modify Recommendation. Recommended modifications for the VM's storage.

NOTE: Storage recommendations for powered-off VMs are displayed, but they cannot be reclaimed, and they are not displayed on the Reclaiming Saving bar until the VM is powered on.

To change the Optimizer's recommendation, click the link in the cell. In the dialog box that opens, type the new recommended value in the **Change Storage Allocation (GB)** field and click **Save**, or click **Reset to Default** to restore the default value.

NOTE: To modify the storage recommendation, users must have administrative privileges. For information about managing optimization credentials, see [Credentials tab](#).

Where to go next N/A

i | **NOTE:** The reclaim size displayed in the Storage optimization table may present a minor variance from the performed reclaim size shown in the Change History view > Change column. Both values are acceptable, given the minor variance caused by rounding the value.

The **Search** box is located on the top left corner of the table. It allows you to search the environment for a specific virtual machine, by entering the VM name, the disk name, or the partition name in the search box. The VMs matching the search criteria are displayed in the Virtual Machines table.

Requirements for storage resizing

The following table outlines the requirements necessary for Foglight Resource Optimizer to successfully resize the storage on virtual machines.

Table 6. Storage resizing requirements

Operating system	Version	File system supported
Microsoft® Windows®	Windows Vista®	NTFS
	Windows Server® 2008 "Longhorn"	NTFS
	Windows Server® 2008 R2	NTFS
	Windows 7	NTFS
	Windows 8	NTFS
	Windows Server® 2012	NTFS
	Windows Server® 2012 R2	NTFS

Table 6. Storage resizing requirements

Operating system	Version	File system supported
Linux®	Red Hat® Enterprise Linux 4.x	ext2
		ext3
	Red Hat Enterprise Linux 5.x	ext2
		ext3
	Red Hat Enterprise Linux 6.x	ext2
		ext3
		ext4
	SUSE® Linux Enterprise Server 10.x	ext2
		ext3
	SUSE Linux Enterprise Server 11.x	ext2
		ext3
	OpenSUSE® 10.2	ext2
		ext3
	OpenSUSE 11.x	ext2
		ext3
ext4		
OpenSUSE 12	ext2	
	NOTE: See also Linux requirements:	
OpenSUSE 13	ext2	
	NOTE: See also Linux requirements:	
		ext3
		ext4

The following is a list of additional requirements necessary for Foglight Resource Optimizer to successfully resize the storage on virtual machines:

- Common requirements:
 - vCenter® 5.0 or later
 - Target VM should be powered ON
 - No snapshots
 - Hyper-V® tools should be installed and running
 - GUID Partition Table (GPT) is not supported
 - Routing is done between appliance and VM
 - No multiple network cards on VM
 - VMs with IDE disks are not supported
 - VMs with iSCSI mapped volumes are not supported
 - VMs with SCSI bus sharing are not supported
 - Storage remediation is NOT supported on VMs with RDM disks, or on VMs that have RDM disks associated with it, even when the RDM disk is not being remediated
 - VMs with encrypted volumes are not supported
 - The following TCP ports are required to be opened between the Foglight Agent Manager Hyper-V agent and the VM that is being optimized: 54212:54241 — Port range used for FreeBSD agent communication
- Microsoft Windows requirements:

- File and Printer Sharing should be enabled
- The Administrative Shares should be enabled
- No dynamic disks
- No partition as a Folder
- TCP port 445 should be opened for SMB (Windows® resize)
- Administrative access
- Linux requirements:
 - Grub boot loader (grub 2 is not supported)
 - Logical volumes that are managed by LVM (Logical Volume Manager) are not supported
 - SSH enabled
 - Root access
 - TCP port 22 should be open for SSH (Linux® resize)

Abandoned VM Images

VMs images can easily get abandoned in large virtual infrastructures. This situation typically occurs when a virtual machine that is no longer needed is removed from inventory instead of being deleted. In this case, large amounts of wasted storage space develop.

The **Abandoned VM Images** category identifies those abandoned VM images and allows you to reclaim them, if necessary. For a list of requirements necessary for Foglight Resource Optimizer to successfully remove the abandoned VM images on virtual machines, see [Enable optional privileges for resource optimization](#). For additional information about abandoned VM images reported on a federated environment, see [Working in a federated environment](#).

NOTE: The Abandoned VM Images view gets populated with data in one to two days after the installation.

The Abandoned VM Images view includes the following elements:

- [Abandoned VM Images optimization table](#)
- [Change History view](#)

Table 7. Abandoned VM Images optimization table

Description	This table includes the following information: Unused Image File Name. Name of the abandoned image (for example, image created when the VM was deleted from the environment, or when the disk files detached from the existing VM). Datastores. Name assigned to datastore. Size. Size of the abandoned image. Last Modified. Date and time when the image file was last modified. Recommendations. Recommends removing the abandoned image file.
Where to go next	N/A

The **Search** box located on the top left corner of the table. It allows you to search the environment for a specific abandoned VM image, by entering its name in the search box. The image files matching the search criteria are displayed in the Abandoned VM Images optimization table.

Powered Off VMs

In virtual environments, VMs often get turned off and forgotten.

The **Powered Off VMs** category identifies virtual machines that have been powered off for an extended period. It is recommended to delete these VMs, since they have been powered off for a long time. Users must manually perform this operation. The operation cannot be reverted, and therefore, it should not be automated.

The Powered Off VMs view includes the following elements:

- [Powered Off VMs optimization table](#)
- [Change History view](#)

Table 8. Powered Off VMs optimization table

Description	This table includes the following information: Virtual Machine. Name assigned to the VM. Datastores. Name assigned to datastore. Size. Size of the powered off VM. Powered Off For. Number of days the VM has been powered off.
Where to go next	N/A

The **Search for a Virtual Machine** box is located on the top left corner of the table. It allows you to search the environment for a specific virtual machine, by entering its name in the search box. The VMs matching the search criteria are displayed in the Virtual Machines table.

Unused Template Images

A VM template acts as the “gold master image” and is used to quickly deploy similar instances in the environment. The **Unused Template Images** category identifies VM templates that have not been used in an extended period. It is recommended to delete these VM templates. Users must manually perform this operation. The operation cannot be reverted, and therefore, it should not be automated.

The Unused Template Images view includes the following elements:

- [Unused Template Images optimization table](#)
- [Change History view](#)

Table 9. Unused Template Images optimization table

Description	This table includes the following information: Template Name. Name assigned to the template. Datastores. Name assigned to datastore. Size. Size of the unused template image. Unused For. Number of days since the template was last used.
Where to go next	N/A

The **Search for a Virtual Machine** box is located on the top left corner of the table. It allows you to search the environment for a specific template image, by entering its name in the search box. The templates matching the search criteria are displayed in the Unused Template Images Optimization Table.

Snapshots

Taking a snapshot in a virtual environment does not create a complete copy of the original VM disk file, rather it only copies the delta between disks. A snapshot file contains only a change log of the original virtual disk. The

Snapshots category identifies the snapshots taken in your environment that have not been modified for an extended period, and allows you to reclaim them, if necessary. For a list of requirements necessary for Foglight Resource Optimizer to successfully remove the snapshots on virtual machines, see [Enable optional privileges for resource optimization](#).

The Snapshots view includes the following elements:

- [Snapshots optimization table](#)
- [Change History view](#)

Table 10. Snapshots optimization table

Description	This table includes the following information: Virtual Machine. VM name and snapshot name. Description. Snapshot description. May indicate why the snapshot was taken. Reclaim Size. Size of the snapshot. Last Modified. Number of days passed since the snapshot file was last modified. Snapshots Count. Number of snapshots. Datastore. Name assigned to the datastore. Recommendations. Recommends removing the unused snapshot file.
Where to go next	N/A

The **Search** box is located on the top left corner of the table. It allows you to search the environment for a specific VM or snapshot file, by entering its name in the search box. The VMs matching the search criteria are displayed in the Virtual Machines table.

Potential Zombie VMs

Zombie VMs are powered-on virtual machines that system administrators may have neglected and that are no longer in use. They are often hard to find in a virtualized infrastructure. It is recommended to power off these zombie VMs.

The **Potential Zombie VMs** category identifies those VMs by analyzing CPU, memory, network, and disk throughput for consistent usage over an extended period. It allows you to reclaim them, if necessary.

By default, a VM is considered a zombie VM if all of the following conditions are met for every resource:

- The VM resource utilization over the evaluated period is less or equal than “Average resource utilization”.
- The VM resource standard deviation over the evaluated period is less or equal than “Average resource utilization” * “Deviation” / 100.

For a list of requirements necessary for Foglight Resource Optimizer to successfully power off the potential zombie VMs, see [Enable optional privileges for resource optimization](#).

The Potential Zombie VMs view includes the following elements:

- [Potential Zombie VMs optimization table](#)
- [Change History view](#)

Table 11. Potential Zombie VMs optimization table

Description	This table includes the following information: Virtual Machine. Name assigned to the VM. CPU. CPU utilization. Memory. Memory amount that the zombie VM is wasting.
--------------------	---

Table 11. Potential Zombie VMs optimization table

	Disk Throughput. Throughput speed of the zombie VM's disk.
	Network. Network speed of the zombie VM.
	Recommendations. Recommends removing the potential zombie files.
Where to go next	N/A

The **Search for a Virtual Machine** box is located on the top left corner of the table. It allows you to search the environment for a specific virtual machine, by entering its name in the search box. The VMs matching the search criteria are displayed in the Virtual Machines table.

VM Configuration

The **VM Configuration** category allows you to search for VMs with duplicate UUIDs (Universally Unique Identifiers) and for VMs with duplicate VMIDs (bios IDs), and provides recommendations for remediation. For a list of requirements necessary for Foglight Resource Optimizer to successfully remove duplicate UUIDs, see [Enable optional privileges for resource optimization](#).

The VM Configuration view includes the following elements:

- [VM Configuration optimization table](#)
- [Change History view](#)

Table 12. VM Configuration optimization table

Description	This table includes the following information:
	Name. Configuration name.
	Virtual Center. Virtual center name.
	Creation Date. Date and time when the configuration was created.
	Template. Set to Yes if it is a template; set to No if it is a VM.
	Recommendation. Recommends changes to the configuration.
	To remove a duplicate UUID or VMID:
	<ol style="list-style-type: none"> 1 Select the VM with the duplicate UUID or VMID from the list. 2 Click Fix Now. 3 In the Fix Confirmation dialog box, click Confirm to proceed with the operation.
	The recommendation is applied and the VM Configuration optimization table is updated accordingly. The result of the UUID or VMID change is also shown in the Change History table at the bottom of the VM Configuration view.
	NOTE: The operation fails if the user does not have the permissions listed in Enable optional privileges for resource optimization .
Where to go next	N/A

The **Search for a Virtual Machine** box is located on the top left corner of the table. It allows you to search the environment for a specific VM configuration, by entering its name in the search box. The configurations matching the search criteria are displayed in the VM Configuration optimization table.

Change History view

The **Change History** embedded view shows the changes that have been implemented in the environment (during the **History Period [x] Day(s)** defined in the [Configuration tab](#)), the object that was affected, and the result of the operation.

To view the change history of all Optimizer tabs, select the “**show all Optimizer history**” checkbox. When the checkbox is not selected, the view shows only the change history for the selected Optimizer tab.

Figure 5. Change History view

Target Name	Change	Executed	Created By	Description
MA-2k8R2-web 1	Decrease CPU Allocation from 2 to 1	4/5/16 11:21 AM	foglight	Completed
Tor-vc-vfog	Decrease CPU Allocation from 4 to 3	3/19/16 10:34 AM	foglight	Failed - Unknown error
KM_Win2k8R2-2	Decrease CPU Allocation from 3 to 2	3/16/16 5:10 PM	foglight	Failed - Cannot complete operation because VMware Tools are not running on this virtual machine.
MA-win2012+2-vc	Decrease CPU Allocation from 2 to 1	3/16/16 5:10 PM	foglight	Failed - VMware Tools are not installed.
KM_Win2k8R2-2	Decrease CPU Allocation from 3 to 2	3/16/16 5:05 PM	foglight	Failed - Cannot complete operation because VMware Tools are not running on this virtual machine.
MA-win2012+2-vc	Decrease CPU Allocation from 2 to 1	3/16/16 5:05 PM	foglight	Failed - VMware Tools are not installed.

The number at the top of the view indicates the total number of changes executed for the selected VM component, during the **History Period [x] Day(s)** defined in the [Configuration tab](#).

Table 13. Change History table

Description	This table includes the following information: Target Name. Virtual machine that was affected by the change. Change. Type of change. These changes may include: <ul style="list-style-type: none"> • Removing a virtual machine limit • Decreasing or increasing the CPU allocation • Decreasing or increasing the memory allocation • Decreasing or increasing the storage allocation • Removing unused snapshots • Powering off potential zombies • Removing abandoned images Executed. Date and time when the change was executed. Created By. User who scheduled the change. Description. Operation result: <i>Completed</i> , <i>In progress</i> , or <i>Failed</i> (and an explanation why the job has failed).
Where to go next	N/A

Optimizer Actions bar

The Optimizer Actions bar allows you to set the following optimizer actions:

- [Settings](#)
- [Scheduled Actions](#)
- [Automate](#)

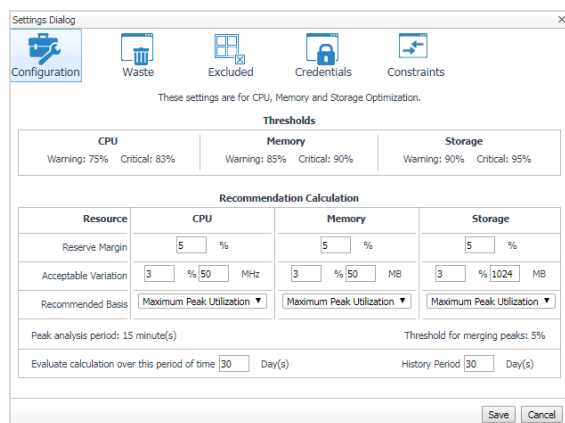
Settings

Use the **Settings** menu to define the default optimization settings for your environment. The **Settings Dialog** box provides information about the following components:

- [Configuration tab](#)
- [Waste tab](#)
- [Excluded tab](#)
- [Credentials tab](#)
- [Constraints tab](#)

Configuration tab

Figure 6. Configuration tab



The Configuration tab provides recommended settings for CPU, memory, and storage optimization.

- **Thresholds.** Provides the values of a resource metric that define the Warning and Critical levels (for CPU, memory, and storage).
- **Recommendation Calculation** area. Allows you to define the following parameters for optimizing the CPU, memory, and storage resources in your environment:
 - **Reserve Margin [x]%**. This parameter is used for calculating the Evaluation Result, which is needed for making recommendations. The **Recommendation Reserve Margin** percentage is the percentage above the recommended basis, reserved for unexpected increases in utilization.
 - **Acceptable Variation [x] % [x] MHz, or [x] % [x] MB.** This parameter is used for calculating the Evaluation Result, which is needed for making recommendations. The **Acceptable Variation** percentage is the minimum percentage deviation of the Evaluation Result from the current setting which results in a recommendation. The **Acceptable Variation** value is the minimum difference between the Evaluation Result and the current setting which results in a recommendation.
 - **Recommended Basis.** Use this list to select the “Recommended Basis” to be used for calculating the Evaluation Result. The following options are available: **Average Utilization**, **Maximum Peak Utilization**, and **Combined Utilization** (half of average utilization plus half of maximum peak utilization).
 - **Peak analysis period: [x] minute(s).** Peak analysis period used for peaks calculation. “Peak” is the maximum usage of metric during this period.
 - **Threshold for merging peaks: [x]%**. If several peaks happened during the peak analysis period, they are treated as a single peak.

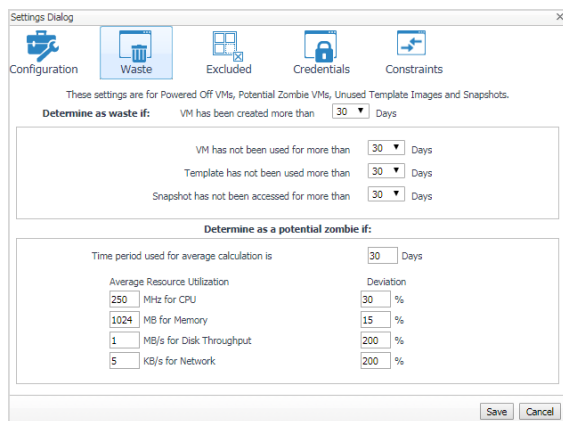
- **Evaluate calculation over this period of time [x] Day(s).** Defines the time interval during which the right-sizing calculation is performed.
- **History Period [x] Day(s).** The [Change History view](#) displays the changes for the time interval defined here.

To save any changes made to the Configuration settings, click **Save** at the bottom of the tab.

i | **IMPORTANT:** Changing any configuration settings forces a recalculation that may require a long time to complete.

Waste tab

Figure 7. Waste tab



The Waste tab allows you to configure the settings for determining resources wasted in your environment. These include powered-off VMs, unused template images, snapshots, and potential zombie VMs:

- **Determine as waste if area:** A resource is considered wasted if one of the following settings is met:
 - **VM has not been used for more than [x] Days.** Defines when a powered-off VM is wasting resources in your environment by not being used.
 - **Template has not been used more than [x] Days.** Defines when a template image is wasting resources in your environment by not being used.
 - **Snapshot has not been accessed for more than [x] Days.** Defines when a snapshot is wasting resources in your environment by not being accessed.
- **Determine as a potential zombie if area:** A VM is considered a zombie VM if the following five settings are met:
 - **Time period used for average calculation is [x] Days.** Defines when a resource is considered a zombie VM, by looking at the period used for average calculations.
 - **Average Resource Utilization—Deviation.** Defines when a resource is considered a zombie VM, by looking at the CPU, memory, disk throughput, and network utilization values.

i | **TIP:** Deviation is the maximum deviation from the average resource utilization that is allowed for a VM considered to be a zombie.

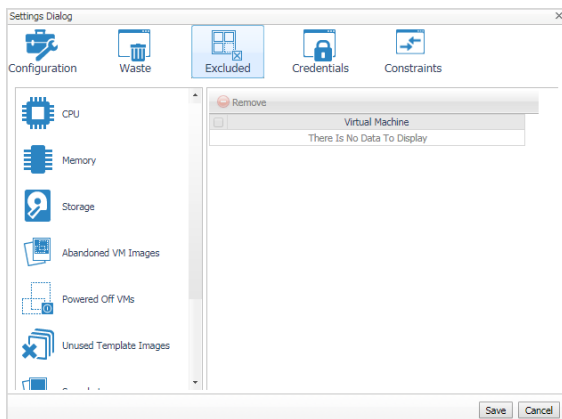
To save any changes made to the Waste settings, click **Save** at the bottom of the tab.

Excluded tab

The Excluded tab allows you to remove a VM from the list of excluded objects.

For information about how to add a VM to the list of excluded objects, see [Excluding objects](#).

Figure 8. Excluded tab



The Excluded tab includes the following information:

- On the left side, a navigation tree, that allows you to select the VM component category.
- On the right side, the list of VMs excluded from the selected VM category.

To remove VMs from the list of Excluded objects, select the check boxes for these VMs and click **Remove**.

To save any changes made to the Excluded settings, click **Save** at the bottom of the tab.

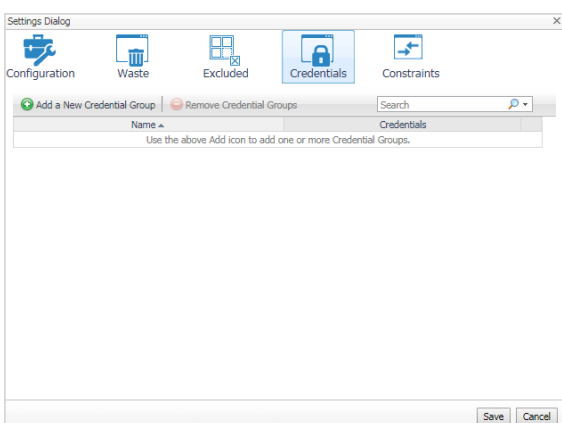
The Excluded tab can also be accessed by clicking **Show Excluded Items** on the [Reclaiming Savings bar](#). For more information, see [Viewing excluded objects](#).

Credentials tab

A credential is a piece of information that an agent instance needs, in order to gain access to the monitored system. Credentials are encrypted and stored in lockboxes. You can manage credentials in Foglight using the **Administration > Credentials** dashboard. For information about this topic, see the “Controlling System Access with Credentials” section in the *Foglight Administration and Configuration Guide*.

The Credentials tab allows you to add, edit, and remove credentials groups. This tab is only for the Storage rightsizer.

Figure 9. Credentials tab



To add a credential group:

- 1 Click **Add a New Credential Group**.

The **Create a New Credential Group** dialog box appears.

- 2 In the **Credential Group Name** field, type in name of the new group.
- 3 In the **List of Related Object** area, define the objects that are related to this credential group. Click **Add Services** and **Add Virtual Machines**, and select the objects from the available lists.
- 4 In the **List of Assigned Credentials** area, select the credentials you want to assign to this group. Click **Assign a Credential** and select a credential type from the available options.
- 5 To save the new group, click **Save**.

The new group appears in the **Credentials** tab.

To edit a credential group:

- 1 Click the **Edit** icon at the right end of the credential group you want to modify.
The **Edit a Credential Group** dialog box appears.
- 2 Modify the group name, the list of related objects, and the list of assigned credentials, as necessary.
- 3 To save the changes, click **Save**.

To delete a credential group:

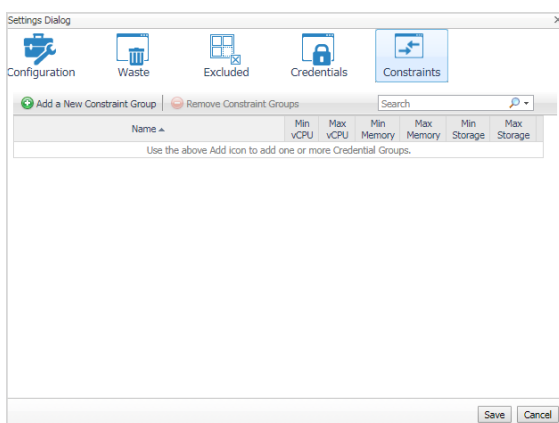
- 1 Select the check box for the credential group you want to delete, and click **Remove Credential Groups**.
A **Confirm deletion** dialog box appears.
- 2 To proceed with the operation, click **Confirm**.
The group is deleted from **Credentials** tab.

Constraints tab

The Constraints tab allows you to set custom thresholds for select objects in the environment. These recommendations are displayed in the **Optimizer** tab > **VM Configuration/ CPU/ Memory/ Storage** views > **Modify Recommendation** column. Use this tab to add, edit, and remove constraints groups.

i **IMPORTANT:** A virtual machine may have several partitions. Foglight Resource Optimizer makes recommendations for each partition separately, but the custom constraints can be set only for the entire VM (not for individual partitions). Therefore, the custom constraint for storage are applied to all partitions on the selected VM.

Figure 10. Constraints tab



To add a constraint group:

- 1 In the **Settings Dialog**, click **Constraints** > **Add a New Constraint Group**.
The **Create a New Constraint Group** dialog box appears.

- 2 In the **Constraint Group Name** field, type in name of the new group.
- 3 In the **List of Related Object** area, define the objects that are related to this constraint group. Click **Add Services** or **Add Virtual Machines**, and select the objects from the available lists.
- 4 In the **Constraints** area, select the options or type the values you want to assign to this group.
- 5 Click **Save**.
The new group appears in the **Constraints** tab.
- 6 To save the new group, click **Save**.
The settings are saved and the **Settings Dialog** closes.

To edit a constraint group:

- 1 In the **Settings Dialog**, click the **Constraints** tab.
- 2 Click the **Edit** icon at the right end of the constraint group you want to modify.
The **Edit a Constraint Group** dialog box appears.
- 3 Modify the group name, the list of related objects, and the list of assigned constraints, as necessary.
- 4 Click **Save**.
The constraint information for the selected group is updated in the **Constraints** tab.
- 5 To save the changes, click **Save**.
The settings are saved and the **Settings Dialog** closes.

To delete a constraint group:

- 1 In the **Settings Dialog**, click the **Constraints** tab.
- 2 Select the check box for the constraint group you want to delete, and click **Remove Constraint Groups**.
A **Confirm deletion** dialog box appears.
- 3 To proceed with the operation, click **Confirm**.
The group is deleted from **Constraints** tab.
- 4 To save the changes, click **Save**.
The settings are saved and the **Settings Dialog** closes.

Scheduled Actions

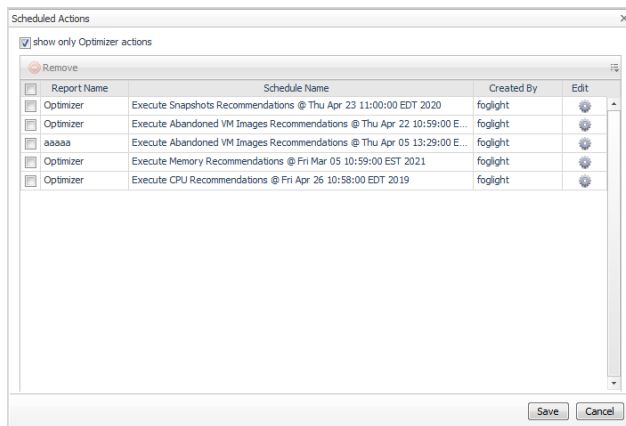
Recommendations for improvements in resource utilization can be implemented automatically, or scheduled for implementation at a particular time in the future (for example, within a maintenance window).

i **IMPORTANT:** Foglight users must have the “Remediation role” to be able to run and automate recommendations. This role can be assigned to a user using the User Management dashboard. For more information about this dashboard, see the “Controlling user access to dashboards” topic in the Foglight Online Help.

Use the **Scheduled Actions** menu to access the list of operations scheduled to be run at a particular time in the future.

The **Scheduled Actions** dialog shows the list of operations scheduled to be run at a particular time in the future, and allows you to edit or remove any scheduled actions. To view only the actions specific to Foglight Resource Optimizer, select the “**show only Optimizer actions**” checkbox. When the checkbox is not selected, the dialog shows all actions scheduled for your virtual environment.

Figure 11. Scheduled Actions dialog box



To edit a scheduled action:

- 1 In the **Scheduled Actions** dialog, click the **Edit** icon at the right end of the action you want to modify.
The **Edit Scheduled Action** dialog box appears.
- 2 Modify the report name, add or remove email addresses, and updated the date and time when the action will be executed, as necessary.
- 3 Click **Apply**.
The scheduled action is updated in the list.
- 4 To save the changes, click **Save**.
The settings are saved and the **Scheduled Actions** dialog box closes.

To delete a scheduled action:

- 1 In the **Scheduled Actions** dialog, select the check box for the action you want to delete, and click **Remove**.
- 2 To save the changes, click **Save**.
The settings are saved and the **Scheduled Actions** dialog box closes.

Automate

Recommendations for improvements in resource utilization can be implemented automatically, or scheduled for implementation at a particular time in the future (for example, within a maintenance window).

i | **IMPORTANT:** Foglight users must have the “Remediation role” to be able to run and automate recommendations. This role can be assigned to a user using the User Management dashboard. For more information about this dashboard, see the “Controlling user access to dashboards” topic in the Foglight Online Help.

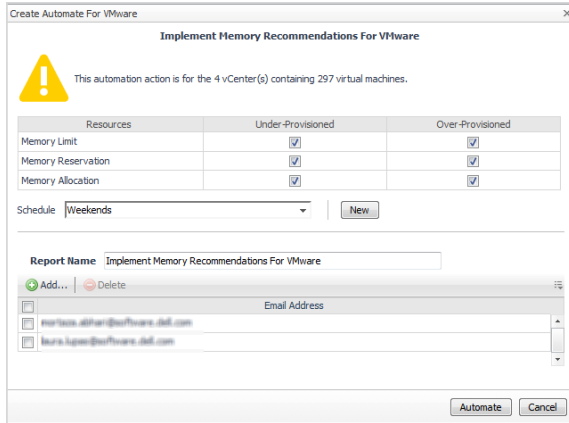
Use the **Automate** menu to set the criteria for automatically sending recommendations for improvements. The **Create Automate For <Environment Name>** dialog box allows you to configure the following settings:

- **Implement the <Resource> recommendations for <Environment Name>**. Select the check boxes (where available) for the recommendations that should be implemented automatically.

i | **NOTE:** Over-provisioning VMs with CPU, memory, or storage resources can be a large source of wasted hardware (and budget). Sometimes over-provisioning can also be a source of performance degradation, if too many virtual CPUs have been allocated and VMs need to compete to each other for host CPU cores.

- Choose the recommendation schedule that should be run automatically. Click **New** to add a new schedule to the list of schedules.
- Type in the name of the report in the **Report Name** field.
- Send an email to a list of recipients when the scheduled action is run. Add, edit, or remove email addresses from the list, as necessary.

Figure 12. Create Automate For <Environment Name> dialog box

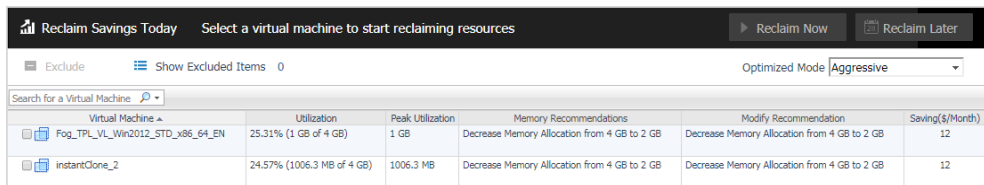


All the executable recommendations for improvements in resource utilization from the selected tab can be implemented automatically. When you click **Automate**, these recommendations are scheduled for implementation at a particular time in the future, and the scheduled recommendations appear in the **Scheduled Actions** dialog.

Reclaiming Savings bar

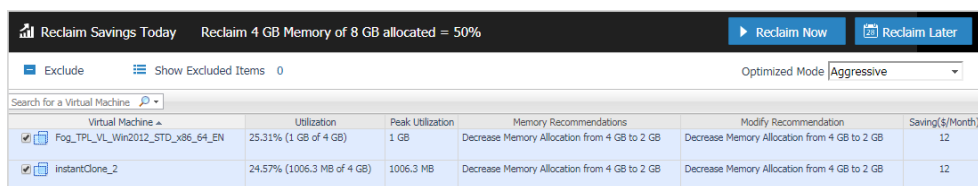
The Optimizer analyzes actual utilization and performance metrics to properly size virtual machine allocations and reclaim unused resources. System administrator can select a VM from the list and review the **Reclaiming Savings** bar for information about how many resources can be reclaimed.

Figure 13. Reclaiming Savings bar with no VM selected



The **Reclaim Now** and **Reclaim Later** buttons and the **Exclude** link are enabled only after selecting a virtual machine from the table.

Figure 14. Reclaiming Savings bar with VM selected



Reclaiming resources

To reclaim right away the resources wasted for a selected VM:

- 1 Click **Reclaim Now**.

A confirmation dialog box opens.

i | IMPORTANT: The implementation of some recommendations may require a VM reboot.

- 2 Click **Confirm** to confirm the operation.

The resources are reclaimed right away.

To schedule the reclaiming of resources wasted for a selected VM:

- 1 Click **Reclaim Later**.

The **Reclaim Later - Schedule** dialog box opens.

- 2 Review the list of recommendations and the date and time when they are scheduled to be implemented.

i | IMPORTANT: The implementation of some recommendations may require a VM reboot.

- 3 Type in the name for the report.

- 4 Create the list of recipients who should receive email notifications when the scheduled action is run.

- 5 Click **Confirm**.

The dialog box closes, and the new scheduled action is added to the **Scheduled Actions** list.

Excluding objects

To exclude objects from the analysis done for optimizing the environment:

- Select the VM from the Virtual Machines table and click **Exclude**.

The selected VM is added to the list of Excluded objects for a specific category. For more information about this list, see [Viewing excluded objects](#).

Viewing excluded objects

To see the list of VMs excluded from the optimization process:

- Click **Show Excluded Items**.

The Settings Dialog box opens, with the Excluded tab on the foreground. You can modify the list and save the new settings. For more information, see [Excluded tab](#).

Foglight Resource Optimizer reports

Several report templates are available with Foglight Resource Optimizer, and together they provide a detailed analysis of the changes made in your environment over time.

Each report template uses report parameters to define the content of the report. Use a template's default report parameters to quickly generate or schedule a report or optionally change the report parameters to customize the report to better meet your requirements.

The following tables contains an alphabetical list of the Foglight Resource Optimizer reports. They also provide a brief description of the report and the report parameters used to define the content. Report parameters marked with an asterisk (*) are required and you must specify this parameter before the report can be generated.

- i** **NOTE:** If you are using the **Templates by Module** tab on the **Run Report** wizard, click the expansion box to the left of the:
- Optimizer entry to view the Foglight Resource Optimizer reports
 - Common Analytics entry to view reports shared between several virtual cartridges, including Foglight Resource Optimizer

Table 14. Foglight Resource Optimizer report templates

Report Name	Report Description	Input Parameters: Default Value
Optimizer - Abandoned VM Images	Contains unused image file names, datastores they belong to, size, last modified date, and recommendations for future actions.	<ul style="list-style-type: none"> • Time Range: Last 4 hours • * Selected Service • * Type of Virtualization
Optimizer - All Reports	Creates reports for CPU, memory, storage, abandoned VM images, powered off VMs, unused template images, snapshots, and potential zombie VMs.	<ul style="list-style-type: none"> • Time Range: Last 4 hours • * Selected Service • * Type of Virtualization
Optimizer - CPU Report	Contains information regarding virtual machine, CPU utilization, peak utilization, and appropriate recommendations.	<ul style="list-style-type: none"> • Time Range: Last 4 hours • * Selected Service • * Type of Virtualization
Optimizer - Initiated Changes History Report	Optimizer-initiated change information regarding target name, description of change, execution date, "created by", and status.	<ul style="list-style-type: none"> • Time Range: Last 4 hours • * Selected Service • * Type of Virtualization
Optimizer - Memory Report	Contains information regarding virtual machine, memory utilization, its peak utilization, and memory recommendations.	<ul style="list-style-type: none"> • Time Range: Last 4 hours • * Selected Service • * Type of Virtualization
Optimizer - Potential Zombie VMs Report	Potential Zombie VMs are virtual machines that are powered on but appear to be unused. These VMs are identified by analyzing CPU, memory, network, and disk throughput for very consistent usage over an extended period of time. This report contains name of the VM, CPU, memory, disk throughput, network usage, and recommendations.	<ul style="list-style-type: none"> • Time Range: Last 4 hours • * Selected Service • * Type of Virtualization
Optimizer - Powered Off VMs Report	Contains information regarding virtual machines that have been powered off for an extended period of time, and the time periods for which they have been powered off.	<ul style="list-style-type: none"> • Time Range: Last 4 hours • * Selected Service • * Type of Virtualization
Optimizer - Snapshots Report	The Snapshots view provides a glimpse at the virtual machine snapshot files that have not been modified for an extended period of time, and the appropriate recommendations.	<ul style="list-style-type: none"> • Time Range: Last 4 hours • * Selected Service • * virtualizationType

Table 14. Foglight Resource Optimizer report templates

Report Name	Report Description	Input Parameters: Default Value
Optimizer - Storage Report	Contains information regarding virtual machine, its storage utilization, recommendation for optimal usage, and displays information that was altered.	<ul style="list-style-type: none"> Time Range: Last 4 hours * Selected Service * Type of Virtualization
Optimizer - Unused Templates Report	The Unused Template Images view highlights templates that have not been accessed in an extended period of time. The report contains the template name, datastore to which it belongs, size, and timeframe for which it has not been used.	<ul style="list-style-type: none"> Time Range: Last 4 hours * Selected Service * Type of Virtualization

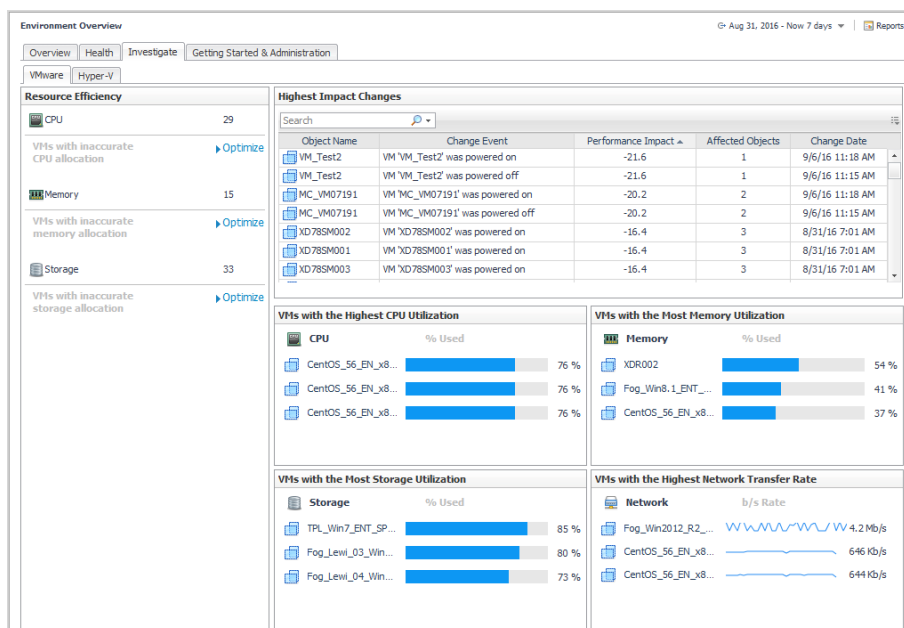
Table 15. Common Analytics report templates

Report Name	Report Description	Input Parameters: Default Value
Cartridge-initiated Changes History Report	Includes FVE Cartridge-initiated change information regarding “target name”, “description of change”, “execution date”, “created by” and “status”. NOTE: This report was named “Changes History Report” in previous versions of this cartridge.	<ul style="list-style-type: none"> * Time Range: Last 4 hours * SelectedService * Type of Virtualization Cartridge Type: ChangeAnalyzer

Investigate resource efficiency

In Foglight for Virtualization, Enterprise Edition systems, the **Environment Overview dashboard > Investigate tab** provides a quick way to investigate the resource efficiency in your environment and to optimize VMs with incorrect resource allocations, as necessary.

Figure 15. Environment Overview > Investigate tab



For VMware® systems, click the Hyper-V tab. The Resource Efficiency pane provides the following information:

- **CPU:** Number of VMs with inaccurate CPU allocation. Click the **Optimize** link to navigate to the Environment Overview > Optimizer Main View dashboard > CPU tab, which provides recommendations for optimizing the CPU for these VMs. For more information, see [CPU](#).
- **Memory:** Number of VMs with inaccurate memory allocation. Click the **Optimize** link to navigate to the Environment Overview > Optimizer Main View dashboard > Memory tab, which provides recommendations for optimizing the memory for these VMs. For more information, see [Memory](#).
- **Storage:** Number of VMs with inaccurate storage allocation. Click the **Optimize** link to navigate to the Environment Overview > Optimizer Main View dashboard > Storage tab, which provides recommendations for optimizing the storage for these VMs. For more information, see [Storage](#).

We are more than just a name

We are on a quest to make your information technology work harder for you. That is why we build community-driven software solutions that help you spend less time on IT administration and more time on business innovation. We help you modernize your data center, get you to the cloud quicker and provide the expertise, security and accessibility you need to grow your data-driven business. Combined with Quest's invitation to the global community to be a part of its innovation, and our firm commitment to ensuring customer satisfaction, we continue to deliver solutions that have a real impact on our customers today and leave a legacy we are proud of. We are challenging the status quo by transforming into a new software company. And as your partner, we work tirelessly to make sure your information technology is designed for you and by you. This is our mission, and we are in this together. Welcome to a new Quest. You are invited to Join the Innovation™.

Our brand, our vision. Together.

Our logo reflects our story: innovation, community and support. An important part of this story begins with the letter Q. It is a perfect circle, representing our commitment to technological precision and strength. The space in the Q itself symbolizes our need to add the missing piece—you—to the community, to the new Quest.

Contacting Quest

For sales or other inquiries, visit <https://www.quest.com/company/contact-us.aspx> or call +1-949-754-8000.

Technical support resources

Technical support is available to Quest customers with a valid maintenance contract and customers who have trial versions. You can access the Quest Support Portal at <https://support.quest.com>.

The Support Portal provides self-help tools you can use to solve problems quickly and independently, 24 hours a day, 365 days a year. The Support Portal enables you to:

- Submit and manage a Service Request.
- View Knowledge Base articles.
- Sign up for product notifications.
- Download software and technical documentation.
- View how-to-videos.
- Engage in community discussions.
- Chat with support engineers online.
- View services to assist you with your product.