



erwin Evolve  
Release Notes

# Table of Contents

---

<b>Legal Notices</b> .....	<b>4</b>
<b>What's New in erwin Evolve 2023.0.0</b> .....	<b>6</b>
Major release 2023.0.0 .....	7
Action On Object Page .....	8
Complex Table .....	9
Custom Homepage .....	10
Duplicate Object .....	11
Enhanced Custom Display String .....	12
Enhanced Diagram Display .....	13
Enhanced Property display .....	14
Page Search .....	15
Redirect Edit View .....	16
Validate On Edit Properties .....	17

---

Pivot Table .....	18
List of enhancements and fixes .....	19
Product Licensing .....	22
<b>About Us .....</b>	<b>25</b>
Technical support resources .....	25

# Legal Notices

© 2023 Quest Software Inc.

ALL RIGHTS RESERVED.

This guide contains proprietary information protected by copyright. The software described in this guide is furnished under a software license or nondisclosure agreement. This software may be used or copied only in accordance with the terms of the applicable agreement. No part of this guide may be reproduced or transmitted in any form or by any means, electronic or mechanical, including photocopying and recording for any purpose other than the purchaser's personal use without the written permission of Quest Software Inc.

The information in this document is provided in connection with Quest Software products. No license, express or implied, by estoppel or otherwise, to any intellectual property right is granted by this document or in connection with the sale of Quest Software products. EXCEPT AS SET FORTH IN THE TERMS AND CONDITIONS AS SPECIFIED IN THE LICENSE AGREEMENT FOR THIS PRODUCT, QUEST SOFTWARE ASSUMES NO LIABILITY WHATSOEVER AND DISCLAIMS ANY EXPRESS, IMPLIED OR STATUTORY WARRANTY RELATING TO ITS PRODUCTS INCLUDING, BUT NOT LIMITED TO, THE IMPLIED WARRANTY OF MERCHANTABILITY, FITNESS FOR A PARTICULAR PURPOSE, OR NON-INFRINGEMENT. IN NO EVENT SHALL QUEST SOFTWARE BE LIABLE FOR ANY DIRECT, INDIRECT, CONSEQUENTIAL, PUNITIVE, SPECIAL OR INCIDENTAL DAMAGES (INCLUDING, WITHOUT LIMITATION, DAMAGES FOR LOSS OF PROFITS, BUSINESS INTERRUPTION OR LOSS OF INFORMATION) ARISING OUT OF THE USE OR INABILITY TO USE THIS DOCUMENT, EVEN IF QUEST SOFTWARE HAS BEEN ADVISED OF THE POSSIBILITY OF SUCH DAMAGES. Quest Software makes no representations or warranties with respect to the accuracy or completeness of the contents of this document and reserves the right to make changes to specifications and product descriptions at any time without notice. Quest Software does not make any commitment to update the information contained in this document.

If you have any questions regarding your potential use of this material, contact:

Quest Software Inc.

Attn: LEGAL Dept

4 Polaris Way

Aliso Viejo, CA 92656

Refer to our Web site (<https://www.quest.com>) for regional and international office information.

## Patents

Quest Software is proud of our advanced technology. Patents and pending patents may apply to this product. For the most current information about applicable patents for this product, please visit our website at <https://www.quest.com/legal>.

## Trademarks

Quest, the Quest logo, and Join the Innovation are trademarks and registered trademarks of Quest Software Inc. For a complete list of Quest marks, visit <https://www.quest.com/legal/trademark-information.aspx>. All other trademarks and registered trademarks are property of their respective owners.

## erwin Evolve - Release Notes

Updated - September 2023

Version - 2023.0.0

# What's New in erwin Evolve 2023.0.0

erwin Evolve 2023.0.0 is the latest major release of the erwin Evolve Suite (2023.0.0.8) and erwin Evolve Web Platform (2023.0.0.9).

In this release, erwin Evolve Web Platform provides enhanced plugins in Evolve. These enhanced plugins are configurable within the front end web interface and are accessible through the Administration menu.

# Major release 2023.0.0

This release brings new enhanced plugins including:

- Action On Object Page
- Complex Table
- Custom Homepage
- Duplicate Object
- Enhanced Custom Display String
- Enhanced Diagram Display
- Enhanced Property display
- Page Search
- Redirect Edit View
- Validate on Edit properties

Additional Features:

- Pivot Table

Web Modeler Enhancements:

- Ability to lock and individual shape (For example, Swimlane)
- Line drawing no longer asks what type, if there is only one
- Tweaks to access rights
- Several Bug fixes and enhancements

Other Improvements:

- Extended options when navigating diagrams in the breadcrumb viewer
- Share diagram now enables you to share a diagram's link with your collaborators in multiple ways
- Optionally hide tabs where there is no content to display
- Optionally enable the reset of the page search on refresh
- Model downloads are now installed with Evolve Suite

# Action On Object Page

The Action On Object Page enables condition-based messaging, hiding, or highlighting of object pages.

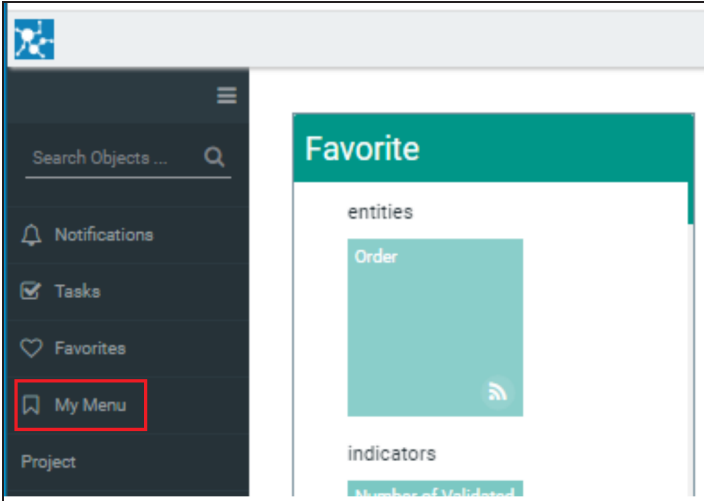


# Complex Table

A Complex table provides an option to display a complex table and object's properties (Title, size of the table, size of the column) and disable all the filters at once.

# Custom Homepage

Custom Homepage offers options to customize your home page by replacing the My Menu option from the left pane.



# Duplicate Object

The Duplicate Object feature adds a Duplicate button to object pages, which enables you to duplicate objects directly from erwin Evolve

# Enhanced Custom Display String

Adds an icon and color formatting options to the custom display string and can opens the object's properties pop-out on clicking.

# Enhanced Diagram Display

Enhanced Diagram Display offers options to customize the HTML5 Diagrams page with respect to drill-down and highlight color.

# Enhanced Property display

It offers formatting options to enhance the Display URL, Boolean, Numeric, and Lookup properties.

# Page Search

The Page Search feature enables you to configure the filter properties of the search box on all object pages.

## Redirect Edit View

A Redirect Edit View enables the redirection of evolve users to different views on entering the edit mode. This allows the system to offer more appropriate fields when creating a new object.

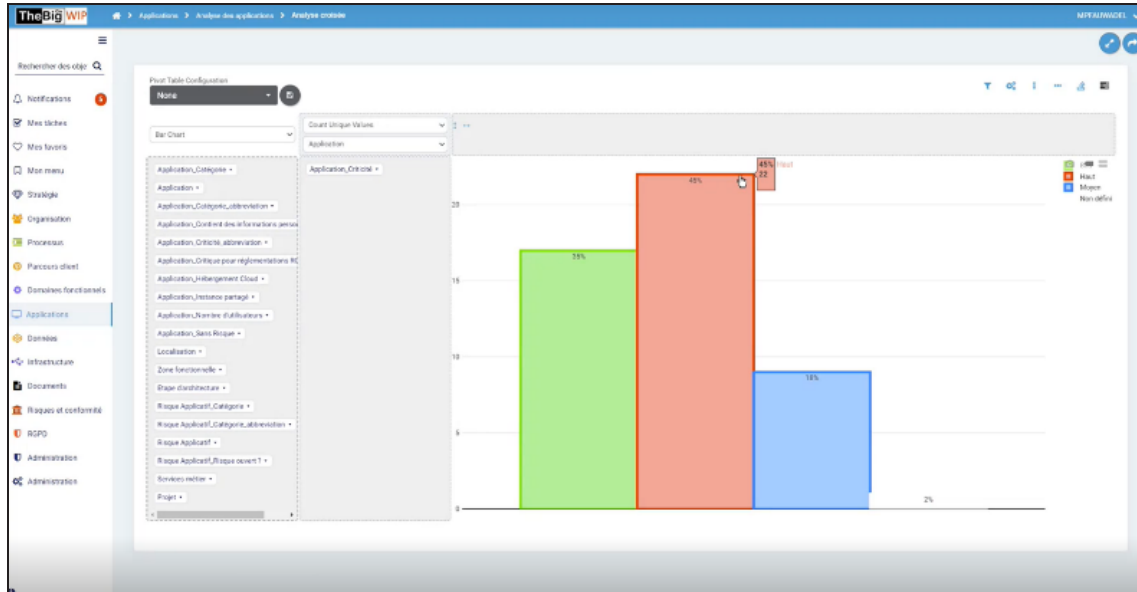


# Validate On Edit Properties

The Validate On Edit Properties feature adds validations and automatically populates values when editing an object.

# Pivot Table

The Pivot Table feature enables you to configure charts and graphs that can be displayed in your Evolve Suite. This component is available dynamically in the front-end UI, so it can be configured quickly and easily.



# List of enhancements and fixes

2023.0.0 Major Release (11.12.0.8 / 11.12.0.9)	
Enhancement	[9865821] - Reduced diagram lockout time
Enhancement	[9866151] - Duplication, Parent Objects and Associated Objects are now available in alphabetical order
BUG	[9866018] [Web Modeler] - The diagram pop-out for associations in Web Modeler only displays associations if the pop-out has no child object associations and has a single layout
Enhancement	[9865692] [WM-AccessRights] - The server-side access-rights restriction for diagram object level CRUD operations has been implemented on the Web Socket
BUG	[9866121] [Web Modeler] - Fixed the connector text box issue in Web Modeler
BUG	[9866044] [ZT01818013] - Search service stuck in a loop, when there is nothing changed for a while
BUG	[9866173] [Web Modeler] - Addresses the issues discovered with associations in Web Modeler
BUG	[9866174] [Web Modeler] - Fixed several crashes in Web Modeler
BUG	[9866119] [Web Modeler] - Fixed an issue where DHA was not able to edit any System Process diagrams (02118126)
Enhancement	[9866056] [Web Modeler] - The Web Modeler now displays Same object to Same object connections correctly
BUG	[9866179] [WM - Access Rights] [02141051] - A user with update/read rights but no create rights can now add shapes to existing objects
BUG	[9866105] (02122129) - Fixed an issue where Web Modeler Sequence Flow Labels were not displaying correctly.
BUG	[9866137] - Fixed an issue where Complex Table Titles were not displaying on the website (02081310)
Enhancement	[9866139] - Fixed problem with association text showing without palette (02029227)
Enhancement	[9865889] [Web Modeler] - The issue with the API objecttype not returning all properties data (02058914) has been resolved

2023.0.0 Major Release (11.12.0.8 / 11.12.0.9)	
BUG	[9866136] - [Model Explorer] Duration and Frequency have the same data type. 01825345
BUG	[9866239] [Web Modeler] - Fixed an issue in the in-place edit where choosing an existing object did not save correctly
BUG	[9866184] [BUG] - [02145537] - Fixed Error 500 with WebRest API
Enhancement	[9866267] Using double quotes in a page search now performs an exact search
BUG	[9866273] [Web Modeler] Unable to clear shapes from diagram without delete permissions. Inconsistent with desktop tool
BUG	[9866300] Global search gets stuck if large volumes of data are removed from history
Enhancement	[9866022] [Web Modeler] Add the ability to lock a shape, so it cannot accidentally be modified / moved
Enhancement	[9866093] [Evolve Web Platform] Better distinction between click to move a diagram (zoom and pan), and the click to open the pop out
Enhancement	[9866123] [Model Explorer] Model downloads are available offline
Enhancement	[9866204] [Evolve Web Platform] Able to print the 'drilled down' diagram when viewing diagrams in Evolve (02151444)
BUG	[9866297] Fixed the online help link in Evolve Designer
Enhancement	[9866289] Hide tabs that have no related items (option)
Enhancement	[9866085] Reset the page search filter when the page is refreshed (option)
BUG	[9866016] Batch mode - Copy batch script to clipboard fixed encrypted password
Enhancement	[9866161] [Web Modeler] - If there are no line choices, then don't ask to choose the only one
Enhancement	[9866240] [Web Modeler] - In place edit shows a list of existing objects, but if the shape is narrow the list is too narrow
BUG	[9866033] Preset global search filters not always working on static sites
Enhancement	[9865976] Coffeemaker and Advanced Workflow no longer require a

<b>2023.0.0 Major Release (11.12.0.8 / 11.12.0.9)</b>	
	special license
Enhancement	[9866149] Share button added to the menu on a drilled down diagram
BUG	[9865910] [Evolve Site] - Fixed an issue where an object could be deleted via the icon bin (Delete button), but would then reappear after reloading the page

# Product Licensing

As of the 2023.0.0 release of erwin Evolve Suite / Web Platform, licensing is migrating to the standard Quest Inc. license system. During the migration, there will be a grace period, whereby existing customers can continue to use their existing Casewise licenses. Quest do not intend to force customers onto the new licensing and will work with them to ensure a successful migration.



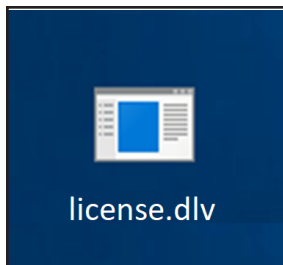
***If you are considering upgrading to 2022, you should not be concerned with the new licensing system, as its usage is optional now.***

## Activating your Quest License

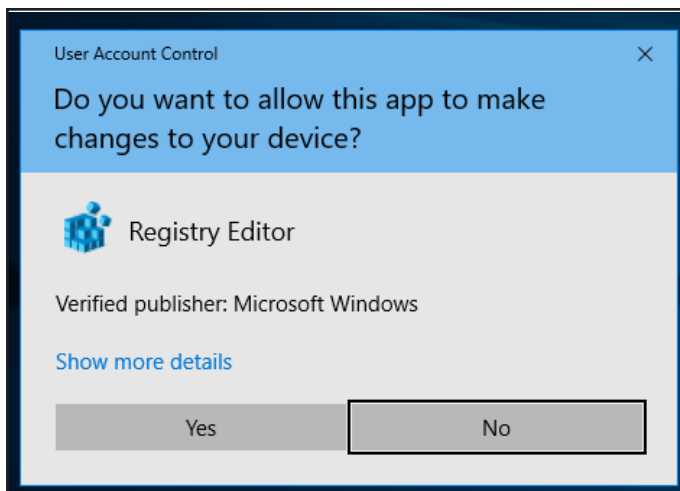
**The process for activating an erwin Evolve license is:**

1. Support will provide you with one or more license files per Server machine that requires licensing.

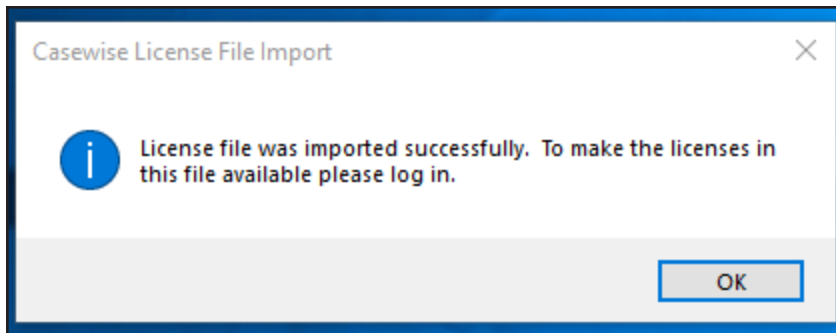
For example:



2. Having installed the software, copy this file to your server's desktop.
3. Double click on the file. You will be presented with a warning:

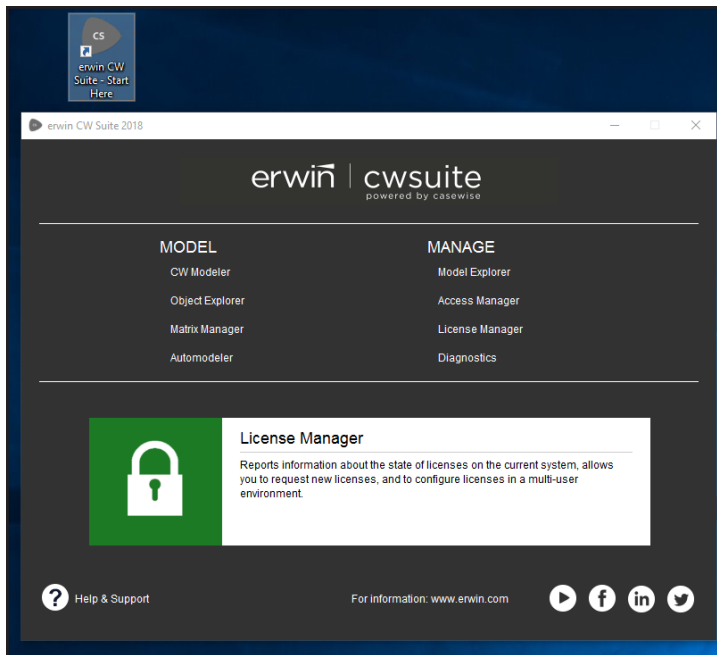


- Click **Yes** to allow the tool to change the registry.

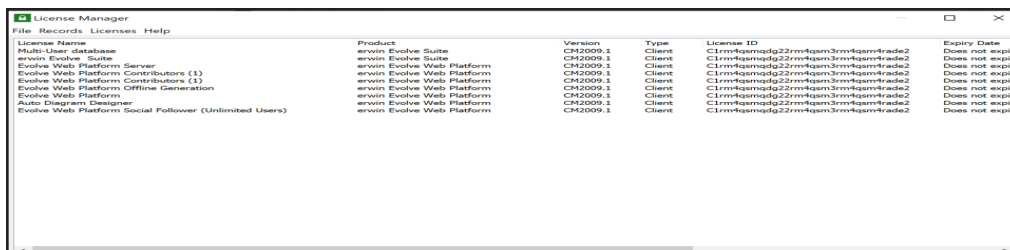


- The software now has the purchased licenses activated on the server. To verify this, load the License Manager.

Open erwin Evolve suite - Start Here.



- Click **License Manager**, and login.
- License Manager will show the license code, and various other attributes.



## *Returning your erwin License*

***If you need to move the license from one server to another, you must contact support, who will assist with the migration.***



# About Us

Quest creates software solutions that make the benefits of modern technology real in an increasingly complex IT landscape. From database and systems management to Active Directory and Office 365 management, and cyber security resilience, Quest helps customers solve their next IT challenge now. Around the globe, more than 130,000 companies and 95% of the Fortune 500 count on Quest to deliver proactive management and monitoring for the next enterprise initiative, find the next solution for complex Microsoft challenges and stay ahead of the next threat. Quest Software. Where next meets now. For more information, visit [www.quest.com](http://www.quest.com).

## Technical support resources

Technical support is available to Quest customers with a valid maintenance contract and customers who have trial versions. You can access the Quest Support Portal at <https://support.quest.com>.

The Support Portal provides self-help tools you can use to solve problems quickly and independently, 24 hours a day, 365 days (about 12 months) a year. The Support Portal enables you to:

- Submit and manage a Service Request
- View Knowledge Base articles
- Sign up for product notifications
- Download software and technical documentation
- View how-to-videos
- Engage in community discussions
- Chat with support engineers online
- View services to help you with your product.