

Toad Data Point 6.1

Release Notes

Tuesday, June 6, 2023

Contents

About Toad Data Point	1
New Features	2
System Requirements	7
Resolved Issues and Enhancements	11
Known Issues	20
Third Party Known Issues	26
Getting Started	28
Product Licensing	28
Globalization	28
About Us	28
Copyright	29

About Toad Data Point

Toad[®] Data Point is a multi-platform database query tool built for anyone who needs to access data, understand data relationships, and quickly produce reports.

With Toad Data Point, you can:

- Connect to almost any database or ODBC data source (see the Release Notes for a list of tested ODBC connections)
- Write SQL queries and join data across all platforms
- Automate and schedule frequent and repetitive tasks
- Streamline data collection
- Collaborate with team members
- Export data in a variety of file formats

Toad Data Point provides a full-featured Database Explorer, Query Builder, and Editor for the following databases:

- Oracle[®]
- SQL Server[®] and SQL Azure
- IBM[®] DB2[®] (LUW and z/OS)
- SAP[®] ASE, IQ, SQL Anywhere, and HANA
- Teradata[®]
- MySQL
- Snowflake[®]

Toad Data Point also provides querying and reporting functionality via the following provider types:

- ODBC
- Business Intelligence and NoSQL data sources

- Microsoft® Excel®
- Microsoft Access®

ODBC Connections

The purpose of the ODBC provider is to offer basic connection and querying capabilities to any database that supports an ODBC 3.0 or later driver. For a list of databases tested with the ODBC provider, see the System Requirements in the Release Notes. This form of connectivity allows connections to databases such as Netezza, IBM iSeries, Ingres, and Vertica™. Because this form of connectivity is generic, it is not full-featured and may not be as robust as the fully-exploited providers for the other databases.

Business Intelligence and NoSQL Data Sources

Toad Data Point provides users with the ability to connect to non-traditional data sources, such as Business Intelligence and NoSQL sources. You can connect to these data sources and explore data and objects, query data, report results, and automate tasks.

The following data sources are supported:

Business Intelligence	Oracle Business Intelligence Enterprise Edition (OBIEE), SAP Business Objects™, Salesforce®, Microsoft SQL Server Analysis Services, Google Analytics™, OData, and SharePoint®
NoSQL	Azure Table Services, Cassandra™, Cloudera Impala, DynamoDB, HBASE™, Hive™, MongoDB™

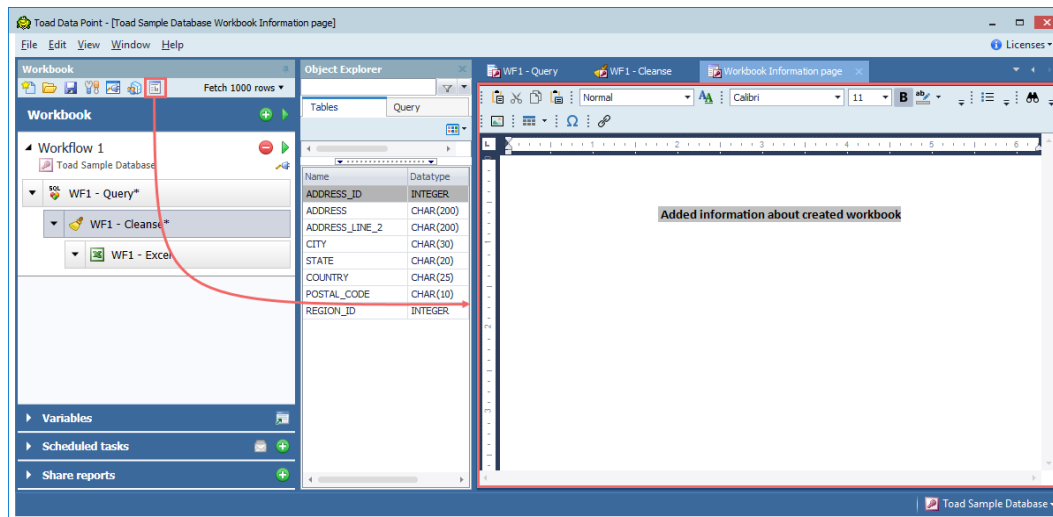
Toad Data Point 6.1 is a minor release with new features, security enhancements, and resolved issues.

New Features

In Toad Data Point 6.1 the following new features were implemented:

The Information Page has been added to the Toad Workbook file

Adding all necessary information about the created new Toad Workbook file is now possible by creating and editing a workbook Information Page as a part of the workbook. The option for adding this page to the workbook is located in the main ribbon as a button, and clicking it will open the rich-text file editor in an additional tab. Closing that tab after adding/editing information will raise the Save dialog - if saved, the information page becomes a part of the workbook.



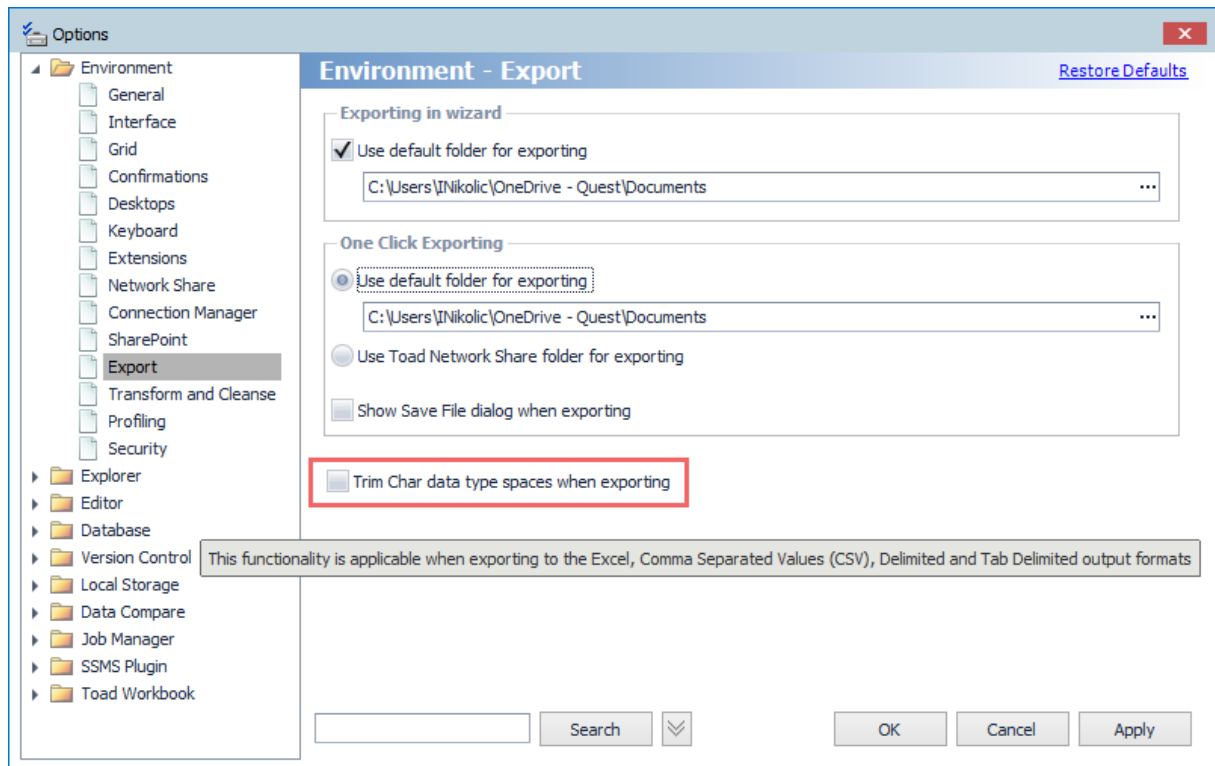
This page allows users to have all information present in one file to better understand why the workbook file was created in the first place and what it is used for before running or downloading it. Since the Information Page gets created along with the workbook, the content of the page will also be available in Toad Intelligence Central.

Workbook files created in earlier versions of Toad Workbook did not include this specific page. However, it is possible to add this page to those files using Toad Workbook 6.1

Option to trim char data type field when exporting data to Excel or CSV files

A new option has been added to the exporting functionality in Toad Data Point to accommodate the use case for preventing the export of spaces at the end of Char data type column values when exporting result sets (in case the values are shorter than the length specified in the column definition).

This option is located under the Options window | Environment section | Export and is unchecked by default.



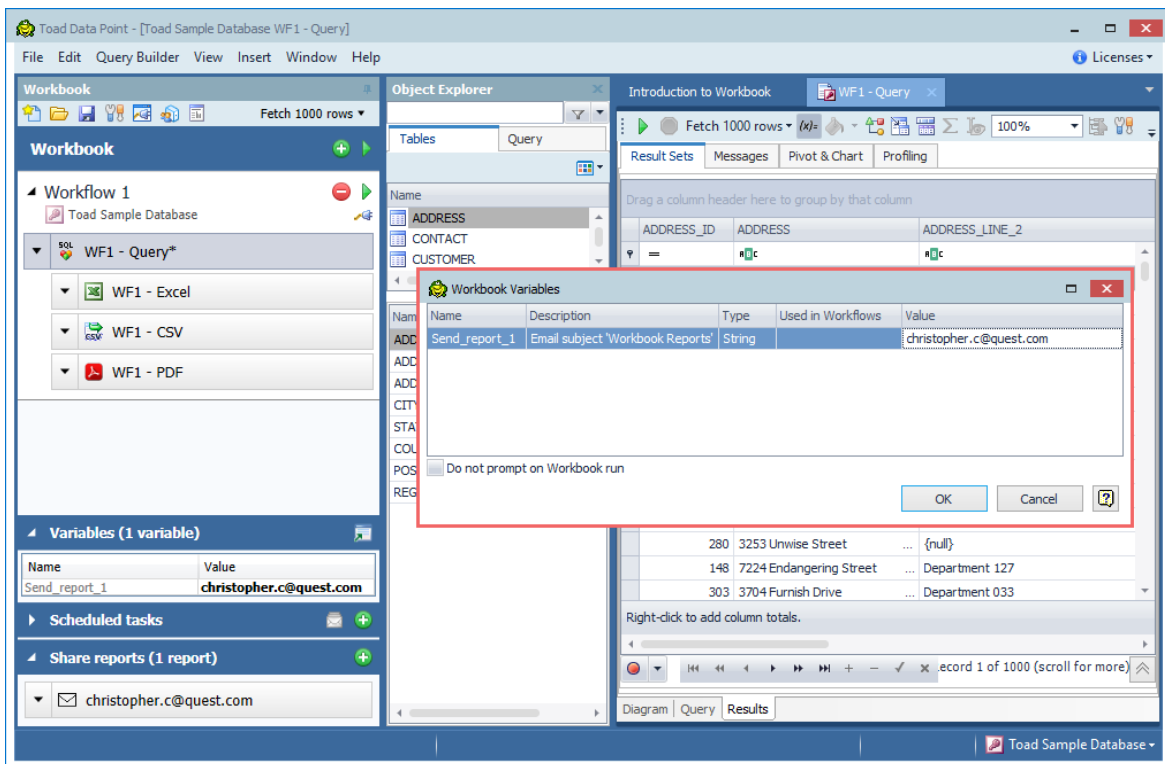
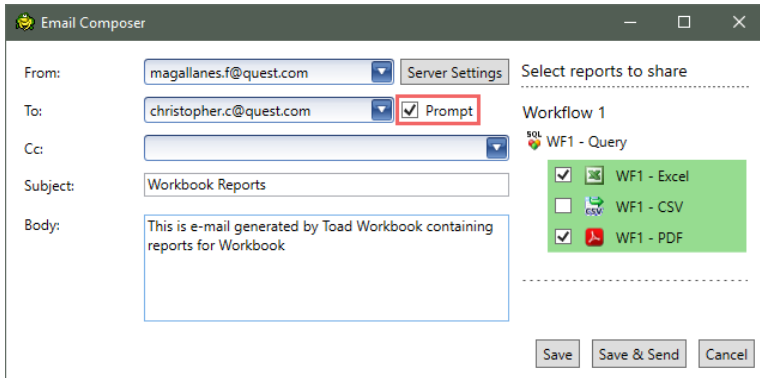
Enabling this option would ensure that all columns in the exported result set containing char data types will only occupy the number of characters that match the value of the specific row by trimming extra spaces to the end of the string to match the column definition. The automatic trimming of the char data type also encompasses export pivot options, meaning that these settings will be applied when doing an export of a Pivot Grid for the following export options:

- Excel Pivot
- Excel Grid
- Excel Pivot View
- CSV

The shared reports recipient list is available for editing on the workbook run

The Shared Reports options in Toad Workbook allow you to create an email template with a list of recipients that will receive emails containing shared reports. If the "Prompt" checkbox is selected, a dialog with the recipient list will be displayed and available for editing as any other workbook variable when the workbook is run.

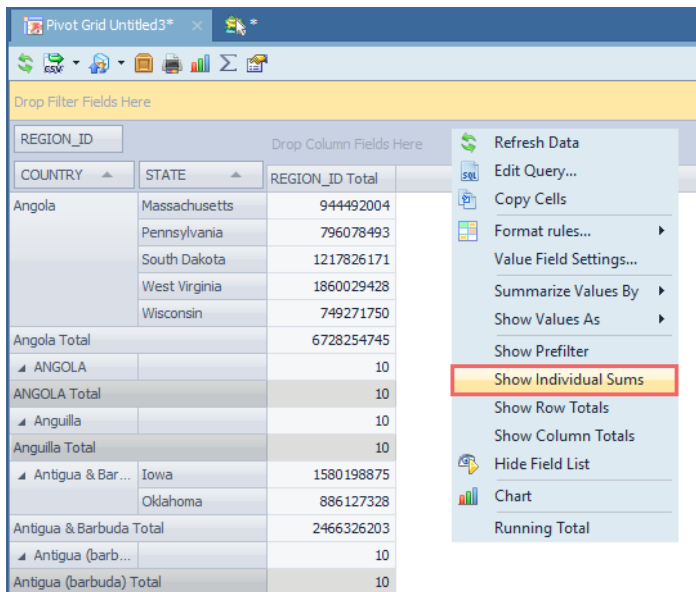
When sending emails to multiple recipients, it may be helpful to use distribution lists for sharing reports because the "To:" input field has a limit of 256 characters when composing an email.



Share reports settings will be saved and present in the published workbook and available for running on Toad Intelligence Central. If the "Prompt" checkbox is selected, a dialog with the recipient list will also be displayed and available for editing as any other workbook variable on Toad Intelligence Central.

Option to include Pivot Grid individual subtotals

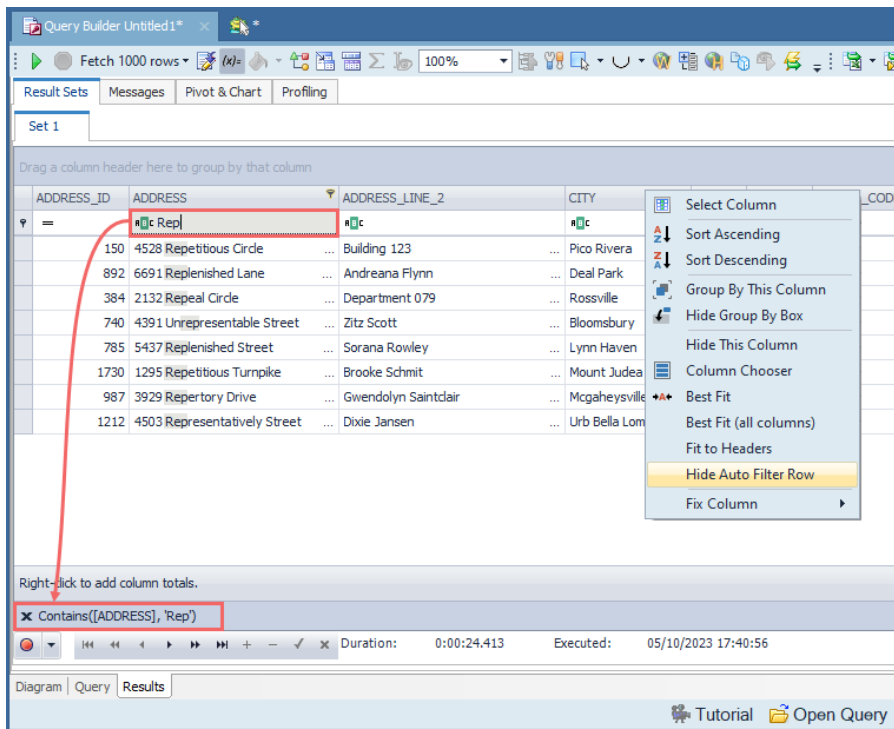
An additional option for including individual subtotal rows in a Pivot Grid has been implemented. If the Pivot grid contains the subtotal rows, a new option in the right-click context menu allows you to choose whether the sum columns should be shown for a single row.



Search options in the data grid have been improved

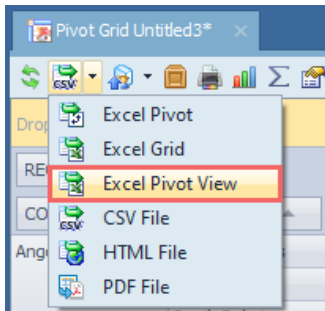
The "Auto Filter Row" option is now enabled by default in the data grid to improve data search functionality by using conditional operators specific to the column's data type. An additional filter row is available in the Result set tab below the column headers.

These default settings can be changed by right-clicking on the column header and selecting the "Hide Auto Filter Row" option from the context menu.

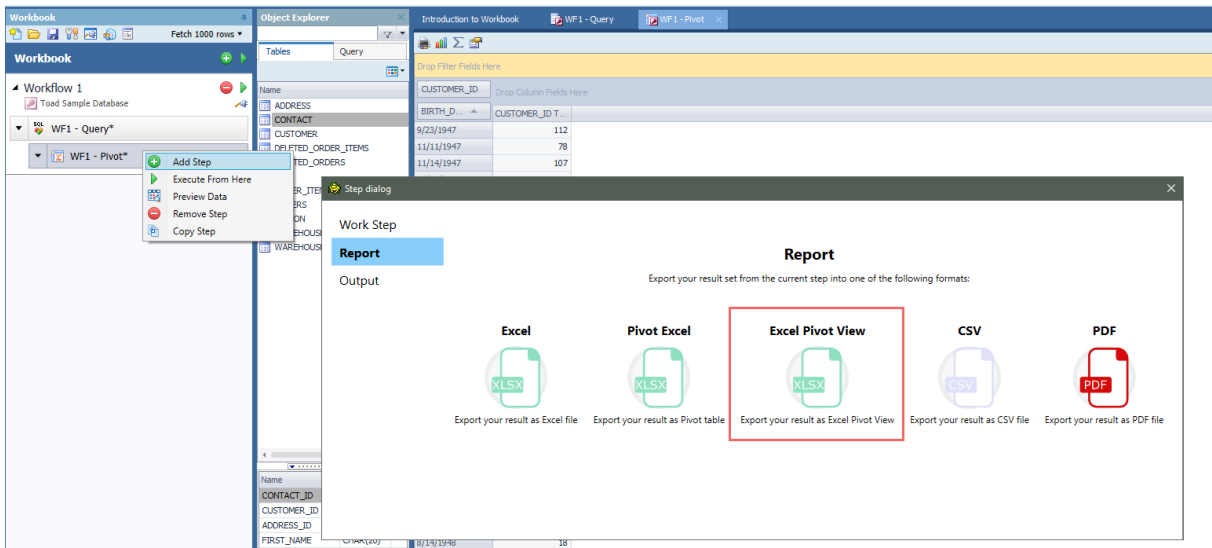


An export option to preserve the original form of a Pivot grid

The "Excel Pivot View" option is available in the Pivot Grid drop-down menu and the Activity section of the Automation module, enabling users to export the Pivot Grid in the same form in which it is displayed in Toad Data Point.



This option is also available in Toad Workbook by adding the "Excel Pivot View" report step under the Report dialog for the Pivot Grid parent step.



Idea Pond

Got a great idea for a new Toad Data Point feature or enhancement? Share it with the Development Team and the Community by posting it on Idea Pond.

Visit [Toad Data Point - Idea Pond](#) where you can submit your ideas. You can also read and vote on the enhancement ideas submitted by other Toad users.

Learn More

Remember, you can find blogs, videos, and forums at the [Toad Data Point Community](#).

- [Toad Data Point Videos](#) - Learn about new features from product video demos.
- [Toad Data Point Forum](#) - Find answers to your questions in the forums.

- [Toad Data Point Blog](#) - Learn tips and tricks from blog posts.
- [Toad Data Point - Idea Pond](#) - Submit your idea to the Development Team.

System Requirements

Client Requirements

Before installing Toad, ensure that your client system meets the following minimum hardware and software requirements:

Requirement	Details
Platform	2 GHz processor (recommended minimum)
Memory	<p>8 GB of RAM minimum, 16 GB recommended</p> <p>Additional RAM Requirements: Using Local Storage, Cross-Connection Query, Business Intelligence connections, or NoSQL connections can require an additional 500 MB of RAM. These features start processes (mysqld.exe, hubproxy.exe) which persist for the Toad session.</p> <p>Note: The memory required may vary based on the following:</p> <ul style="list-style-type: none"> • Applications that are running on your system when using Toad • Size and complexity of the database • Amount of database activity • Number of concurrent users accessing the database
Hard Disk Space	<p>800 MB to install Toad</p> <p>450 MB to run Toad</p> <p>Additional Recommendations: For retrieving large queries, allow 10 GB free disk space (or more, depending on the size of the data being retrieved). After retrieving 2500 rows, Toad saves data in a TMP (.tmp) file in the user's Temp directory. These TMP files are deleted when Toad closes.</p>
Operating System	<p>Windows Server® 2012</p> <p>Windows Server® 2012 R2</p> <p>Windows Server® 2016</p> <p>Windows Server® 2019</p> <p>Windows® 8.1 (32-bit or 64-bit)</p> <p>Windows® 10</p>
.NET Framework	<p>Microsoft® .NET Framework 4.7.2</p> <p>Teradata® .NET Data Provider</p> <p>You must install the Teradata .NET Data Provider (13.10 or later) to use a Teradata native connection in Toad.</p> <p>Note: To use a Teradata connection in a cross-connection query, you must also install a Teradata (13.10 or later) ODBC driver.</p>
Additional Software	<p>Visual C++ Redistributable for Visual Studio 2019. This software is required. It is included in installation using the .exe installer. If using the .msi installer, ensure that this software is installed prior to installation. See Visual C++ Redistributable for VS 2019.</p> <p>For 64-bit Toad Data Point, both 32-bit and 64-bit Visual C++ packages are required.</p>
Database Client	<p>DB2® Client</p> <p>Toad no longer installs a DB2 Client along with the Toad application. When connecting to a DB2 database, ensure that you have a DB2 Client or IBM Data Server Driver installed. Toad supports DB2 Client versions 9.7.6 through 11.1.</p> <p>Oracle® Client</p> <p>Toad can connect to Oracle using Direct Connect (no Oracle Client required) or using an</p>

Requirement	Details
	<p>Oracle Client or Oracle Instant Client. However, if you want to use LDAP, you must install an Oracle Client. Toad supports 9i or later Oracle Clients and Oracle Instant Clients.</p> <p>Notes:</p> <ul style="list-style-type: none"> You cannot use Oracle Direct Connection in a cross-connection query. To use an Oracle connection in a cross-connection query, you must install an Oracle Client (full install) or you must install the Oracle Instant Client plus the Oracle ODBC driver.
ODBC Driver	<p>In order to create a native Snowflake connection, you must install the ODBC Driver 2.24.2 (or later) provided by Snowflake. Upon installing and configuring the driver, Toad Data Point will be set for this type of connection.</p> <p>Note: New versions of the Snowflake ODBC Driver are backward-compatible, but there is no guarantee that earlier versions are forward-compatible. Active monitoring and maintaining of installed versions is advised.</p> <p>For more information regarding the process of creating Snowflake connections, please refer to the Installation Guide and User Guide.</p>
Additional Requirements	<p>Web Browser Microsoft® Internet Explorer® 11 or later</p> <p>Screen Recommended maximum DPI settings for Toad are 125%. It is possible to use Toad up to 200% but some dialog windows will not be completely usable anymore. Maximum tested resolution for Toad is 3800 x 2160 px.</p>

Server Requirements

Before installing Toad, ensure that your server meets the following minimum hardware and software requirements:

Requirement	Details						
Native Database Server	<p>Toad supports the following databases:</p> <p>Oracle 10g R2, 11g, 11g R2, 12c, 12c R2, 18c</p> <p>Toad has been tested on Oracle Exadata 2.0 running Oracle database 11g R2.</p> <p>SQL Server 2012 and SQL Server 2012 Express</p> <p>SQL Server 2014 Enterprise and SQL Server 2014 Express</p> <p>SQL Server 2016</p> <p>SQL Server 2017</p> <p>SQL Server 2019</p> <p>Notes:</p> <ul style="list-style-type: none"> SQL Server Compact Edition is not supported. Storage Management is not available on SQL Server Express. <p>IBM DB2 for LUW 9.7, 10.1, 10.5, 10.5.0.5, 11.1, 11.5</p> <p>IBM DB2 for z/OS 11, 12</p> <p>Note: Toad may support IBM DB2 Express and SWE in addition to listed above servers but note that no testing was performed on it.</p> <p>Note: Windows 8, 10 and Windows Server 2012 require the following Fix Pack in order to ensure registration of DLLs in Global Assembly Cache:</p> <table border="1"> <tbody> <tr> <td>IBM DB2 LUW 10.5</td> <td>Fix Pack 4</td> </tr> <tr> <td>IBM DB2 LUW 10.1</td> <td>Fix Pack 4</td> </tr> <tr> <td>IBM DB2 LUW 9.7</td> <td>Fix Pack 10</td> </tr> </tbody> </table>	IBM DB2 LUW 10.5	Fix Pack 4	IBM DB2 LUW 10.1	Fix Pack 4	IBM DB2 LUW 9.7	Fix Pack 10
IBM DB2 LUW 10.5	Fix Pack 4						
IBM DB2 LUW 10.1	Fix Pack 4						
IBM DB2 LUW 9.7	Fix Pack 10						

Requirement	Details
	<p>MySQL 5.0, 5.1, 5.5, 5.6, 5.7 MariaDB 5.5.5, 10.2.8, 10.3.2 (using MySQL provider) SAP ASE 15.5, 15.7, 16 SP03 SAP IQ 15, 16 SAP SQL Anywhere 16 SAP HANA SPS 08, SPS 09, SPS 10, SPS 11, SPS 12, SAP HANA 2.0, SAP HANA 2.0 SPS 02 Teradata 12.0, 13.0, 13.10, 14, 15, 16 Access® 2007, 2010, 2013, 2016 Note: To use Access 2016 64-bit to connect to an Access database in Toad, the Microsoft Access Database Engine is required and might not be included in the Access installation. The engine must match the architecture (bitness) of Toad. Excel® 2003, 2007, 2010, 2013, 2016 Note: To use Excel 2016 64-bit to connect to an Excel or .csv file in Toad, the Microsoft Access Database Engine is required and might not be included in the Excel installation. The engine must match the architecture (bitness) of Toad.</p>
ODBC Database Server	<p>Toad Data Point allows you to create a connection to a database that supports an ODBC 3.0 or later driver. ODBC connectivity provides basic querying capability, but may not be as full-featured as a native connection in Toad. Toad has been tested on the following databases, using an ODBC connection:</p> <ul style="list-style-type: none"> • DB2 for i5/OS V5R4 and IBM i 6.1, 7.3 • EDB Postgres Advanced Server 10 • Greenplum® Database • Informix Dynamic 10.00, 11.0 (limited testing) • Ingres Community Edition 2006 R2 on Windows 32-bit (limited testing) • Netezza Data Warehouse Appliance 4.6.6, 6.0, 7.0, 7.2.1 • PostgreSQL® 9.5, 9.6.3, 10 • Vertica 4.1, 5.0, 5.1 (with 4.0, 4.1 ODBC driver), 6.0 (with 6.0 ODBC driver), 6.1, 7.0, 8.1, 9.0 <p>Note: For a list of databases that are not supported, see Known Issues in the Release Notes.</p>
Cloud Database Service	<p>Oracle databases running on Amazon EC2 SQL Azure and Azure SQL Data Warehouse Note: To be able to utilize a majority of Toad functionality, please grant VIEW DEFINITION on the SQL Azure databases you want to work with. SQL Server databases running on Amazon EC2 Toad can manage Amazon RDS and any other cloud or service offering compatible with MySQL.</p>
Business Intelligence Connections	<p>Toad has been tested with, and supports, the following Business Intelligence platforms:</p> <ul style="list-style-type: none"> SAP Business Objects XI 3.1, 4.1 Oracle Business Intelligence Enterprise Edition 12.2 Salesforce.com® Microsoft SQL Server Analysis Services 2016 Google Analytics™ OData version 4 SharePoint® Server 2013

Requirement	Details
NoSQL Connections	<p>Toad has been tested with, and supports, the following NoSQL platforms:</p> <ul style="list-style-type: none"> Azure Table Services Apache Cassandra™ 3.11.0 Amazon DynamoDB Apache HBASE™ 1.2.6 Apache Hive™ 2.1.0 Cloudera Impala 2.9.0, 3.2.0 with CDH 6.3.2. Toad Data Point has been certified by Cloudera. MongoDB™ 3.4.6, 3.4.9, 4.0
Toad Intelligence Central	<p>This release of Toad Data Point has been tested with Toad Intelligence Central 5.6.</p> <p>Note: Some publishing features in this release of Toad might not be supported in earlier versions of Intelligence Central. For more information about compatibility between Intelligence Central versions and Toad Data Point 6.1 features, see the New Features section of the Toad Data Point Release Notes.</p>
VM and Cloud Platform Environments	<p>In general, the databases and data sources listed in this table are also supported when installed on a virtual machine (VM) or cloud platform. See the database or data source documentation for more specific information.</p>
Additional Testing	<p>Data Set Size</p> <p>The following Toad Data Point functionality has been tested with data sets of up to 5 million rows: SQL Editor, Data Compare, Import Wizard, Export Wizard, Publishing Data to Intelligence Central.</p> <p>For the following Toad Data Point modules, working with very large data sets can impact performance. For best results in these areas, work with data sets of less than 1 million rows: Dimensional Viewer, Pivot Grid, manually sorting a result grid, performing more than one Data Compare at a time (such as running multiple Data Compare Automation scripts simultaneously).</p> <p>Notes:</p> <ul style="list-style-type: none"> • Performance can vary based on available disk space and memory, CPU speed, and the bitness of Toad, as well as the type and number of columns. • It is recommended to use Toad Data Point 64-bit when working with large data sets. • Import and export functionality was tested with .csv files. • Performance testing was conducted using Toad Data Point 64-bit.
Security	<ul style="list-style-type: none"> • Starting with Toad Data Point 5.5, the TLS protocol v1.2 or above is required for MySQL data sources that use cross-query connections and store data in MySQL embedded hub. • Starting with Toad Data Point 6.0 the TLS protocol v1.2 or above is required when establishing secure connections to MySQL data sources

Virtualization Support

Requirement	Details
Application Virtualization	<p>When deploying Toad in a virtualization environment, for best results ensure the system accurately reflects the applicable client hardware and software requirements listed in this document.</p> <p>Toad has been developed using Microsoft guidelines (see Remote Desktop Services programming guidelines) and can be deployed and operated in virtualization environments such as Citrix XenApp, Microsoft App-V, and VirtualBox.</p> <p>See "Install Toad on Citrix Systems" (page 1) for more information.</p>

Requirement	Details
Server Virtualization	Toad has been tested with the following: <ul style="list-style-type: none"> • Oracle VM 3.1 running on Red Hat Enterprise Linux 64-bit with Oracle 11gR2 • Oracle VM 2.2 running on Windows 2008 32-bit with Oracle 11gR2

User Requirements

User Requirements to Install Toad

Only Windows Administrators and Power Users can install Toad.

Note: The following exceptions exist for Power Users:

- (DB2 only) A Power User can install Toad as long as this user belongs to the DB2ADMNS or DBUSERS group.

If an Administrator installs Toad, the Administrator can share the Toad shortcut icon on the desktop and menu items with any user—a Power User, Restricted User—on the computer.

If a Power User installs Toad, a Restricted User cannot do the following:

- Associate file extensions.
- View the Toad shortcut icon on the desktop or the Toad menu options in the Windows Start menu. As a workaround, Restricted Users can create a shortcut to Toad from the install directory and place the shortcut on their desktop.

User Requirements and Restrictions for Running Toad

The following describes the requirements and restrictions for users who launch and run Toad:

- (DB2 only) A Windows Power User or Restricted User must belong to the DB2ADMNS or DB2USERS group. To add the user to one of these groups, select **Start | Control Panel | Administrative Tools | Computer Management | System Tools | Local Users and Groups | Groups | DB2ADMNS or DB2USERS**.
- (DB2 only) A Windows Power User or Restricted User does not have the authority to add or remove DB2 catalog entries using the Toad Client Configuration wizard. However, these users can use the Import Profile function in the Toad Client Configuration wizard to import catalog entries to Toad.
- (DB2 only) To take full advantage of Toad for DB2 LUW functionality, the user ID specified in the Toad connection profile for each DB2 for LUW database connection requires the authorizations listed in the following document:
[ToadDB2LUWAuthorizations.xls](#)
- (DB2 only) As a minimum requirement to manage a DB2 for z/OS subsystem in Toad, the user ID defined in the Toad connection profile for the subsystem must either have SYSADM privileges or SELECT privileges on the DB2 catalog tables. For a complete list of authorizations (and corresponding GRANT statements) a user requires to take full advantage of Toad for DB2 z/OS functionality, refer to the following document:
[ToadDB2zOSAuthorizations.doc](#)
- To create or modify the QuestSoftware.ToadSecurity table to enable Toad Security, the user who maintains this table must have privileges to create, insert, update, and delete it. All other users need only the ability to read the QuestSoftware.ToadSecurity table to use Toad Security features.

Resolved Issues and Enhancements

The following is a list of issues addressed and enhancements implemented in this release of Toad Data Point:

Resolved Issues in 6.1

Feature	Resolved Issue / Enhancement	Defect ID
Automation	"The Embedded Automation file is too large or complex to process." error is encountered when an automation script containing another automation script that compares databases with over 800 tables and 1600 columns is run	QAT-17591

Feature	Resolved Issue / Enhancement	Defect ID
Automation	Automation script containing a .tct file which includes a table without records on a DB2 Z/OS connection never finishes running	QAT-17728
Automation	String variables in the automation script are wrongly formatted when the Arithmetic Operators are used as a parameter in Replace function	QAT-17767
Automation	"[Teradata Database] [3706] Syntax error: expected something between the 'WHEN' keyword and the 'WHEN' keyword." error is encountered when an automation script containing Export activity is run on the Teradata connection	QAT-17939
Automation	Overwrite output file function for a Data Visualization activity in an automation script is always enabled regardless of whether the option is checked or not	QAT-18060
Automation	"Cannot access a closed file." error is encountered when an Automation script containing a Dimensional View activity with the "Embed files into Automation script" option checked is run	QAT-18122
Automation	Timestamp suffix as part of the report names in Automation is not applied if the Overwrite option is checked	QAT-18171
Automation	The Find and Replace activity in Automation does not replace the placeholder text with specified values	QAT-17763
Automation Tour	SQL script cannot be chosen from the Automation Tour wizard	QAT-17315
Change Connection	"Reconstruction connection problem" error is encountered when changing a Teradata connection in the Query Builder	QAT-17696
Change Connection	"Connection change error Reconstruction connection problem..." error is encountered when fully qualified object names are not used in the query and a connection is changed in Query Builder	QAT-17867
Change Connection	"Object reference not set to an instance of an object. The connection cannot be changed" error is encountered when changing a Teradata connection in a reopened .tsm file	QAT-17872
Change Connection	"Guid should contain 32 digits with 4 dashes (xxxxxxxxxx-xxxx-xxxx-xxxxxxxxxxxxxxxx). The connection cannot be changed." error is encountered when changing the connection in a reopened query builder file containing a query and a subquery on a Teradata and DB2 z/OS connections	QAT-17991
Change Connection	"Reconstruction connection problem" error is encountered when changing an SAP ASE connection in the Query Builder	QAT-18113
Change Connection	"Object reference not set to an instance of an object." error is encountered when changing a connection to a different data source with a user that does not have permission to see all objects as the first user (connection) and the user password is not saved	QAT-18254
Change Connection	"Connection change error Reconstruction connection problem." error is encountered when fully qualified object	QAT-18110

Feature	Resolved Issue / Enhancement	Defect ID
	names are not used in the query and an SAP ASE connection is changed in Query Builder	
Data Comparison	Compare wizard generates a report with the wrong result set when comparing DATE data types on SQL Server and DB2 tables	QAT-17249
Data Comparison	"InvalidCastException" error is encountered when generating a script to sync a DateTime2 datatype on SQL Server 2019 connection to Timestamp data type on DB2 z/OS connection	QAT-18357
Data Grid	"Unknown column 'ROWNUM' in 'where clause'" error is encountered when retrieve data from the published snapshots on an Oracle connection	QAT-18366
FTP Connections	"The negotiation of key exchange method has failed" error is encountered when connecting to an SFTP server	QAT-16741
General	Toad Data Point becomes unresponsive when opening a Toad Visualization file	QAT-17520
General	Query builder file cannot be saved after hovering the Menu bar options	QAT-17646
General	The workbook file is not saved when the SAVE button is clicked in the Save As window	QAT-17106
General	Toad Data Point closes unexpectedly when a query containing Common Table Expressions (CTE) and a LIMIT clause is run on a Vertica connection	QAT-17756
Job Manager	"[Teradata Database] [2666] Invalid date supplied for..." error is encountered when a scheduled workbook containing a bind variable for a date datatype column is run on a Teradata connection	QAT-18124
Job Manager	"Index was outside the bounds of the array" error is encountered when a scheduled task is set to be run on the last day of the month	QAT-17584
Job Manager	The scheduled task disappears from the Job Manager window in the Task List tab when it is set to run only on the last day of the month	QAT-17585
Join Visualization	The visualization under the Properties dialog does not follow changes made in the Diagram tab of Query Builder	QAT-17628
Join Visualization	Venn diagram to analyze joined views in Query Builder is not displayed when the "Analyze join" button is clicked	QAT-17645
Join Visualization	The query is changed when using the Venn diagram to analyze the Join and Automatically arrange tables button is clicked in the Query Builder	QAT-18153
Object Explorer	Toad Data Point becomes unresponsive when expanding a database node in the Object Explorer panel on an SAP ASE connection	QAT-17509
Pivot Grid	Date column values are displayed as Datetime values in an exported pivot grid file when the Date data type column is used for the Column Area	QAT-18075

Feature	Resolved Issue / Enhancement	Defect ID
Pivot Grid	Data column values are improperly formatted in an exported pivot grid file when the Date data type column is used for the Data Area	QAT-18180
Pivot Grid	Data column values are improperly formatted in an exported pivot grid file when the Date data type column is used for the Row Area	QAT-18232
Pivot Grid	Pivot grid settings are not preserved when a DB2 z/OS connection is changed in the Pivot Grid tab	QAT-17826
Publishing Wizard	Pivot Grid Excel report step is not published as a part of the published workbook	QAT-17410
Publishing Wizard	"Can't find database object <Name_OfObject> " error is encountered in the Authentication field of the "Publish to Intelligence Central" window when publishing a View or Snapshot using a table alias on a DB2 z/OS connection	QAT-17639
Publishing Wizard	"Quest.Toad.Exceptions.BaseException Identifier name '<folder name>' is too long" error is encountered when publishing a data set to a folder with a long name on Toad Intelligence Central	QAT-17776
Publishing Wizard	"Error generating authentication info" error is encountered in the Authentication field of the "Publish to Intelligence Central" window when publishing a View or Snapshot using a table alias on a DB2 z/OS connection	QAT-17793
Publishing Wizard	"ERROR:'(: Expecting: CROSS FULL INNER JOIN LEFT NATURAL ON RIGHT STRAIGHT_JOIN USING" error is encountered when publishing a view or snapshot from a Teradata connection	QAT-18148
Publishing Wizard	"Object already exists" error is encountered in Publish Summary window when publishing an automation script or a workbook to the TIC folder which contains previously published automation scripts or workbooks starting with the same characters without overwriting existing files	QAT-18212
Publishing Wizard	The workbook file is not republished when the "Publish" button is clicked in the "Publish to Toad Intelligence Central" window and the workbook's folder is deleted on Toad Intelligence Central	QAT-18252
Publishing Wizard	"Error generating authentication info. Run the query before publishing to make sure there's no error" error is encountered in the Publish To Intelligence Central window when publishing as view or snapshot	QAT-18320
Query Builder	"Implicit conversion from datatype VARCHAR to '<numeric user-defined type>' is not allowed. Use the CONVERT function to run this query" error is encountered when a query containing a WHERE clause for a numeric UDT column is run on an SAP ASE connection	QAT-17524
Query Builder	Global Where and global Having clauses are duplicated when conditions are specified in separate parentheses on an SAP ASE connection	QAT-17516
Query Builder	"Implicit conversion from datatype 'VARCHAR' to 'BIT' is	QAT-17519

Feature	Resolved Issue / Enhancement	Defect ID
	not allowed. Use the CONVERT function to run this query" error is encountered when adding a WHERE clause to Boolean datatype through Query Builder on an SAP ASE connection	
Query Builder	DateTime value is displayed in reverse in the Diagram tab in the Query Builder when editing a WHERE condition for a Datetime column on an SAP ASE connection	QAT-17525
Query Builder	The default alias disappears under the WHERE clause when a custom alias is removed from the Diagram tab field	QAT-17546
Query Builder	"[Teradata Database] [3535] A character string failed conversion to a numeric value." error is encountered when a query containing an IN statement with DATE data type value in the WHERE clause is run	QAT-17560
Query Builder	The Field alias is not automatically populated when an aggregate function in the Query Builder's Diagram tab is used	QAT-17589
Query Builder	"Object reference not set to an instance of an object." error is encountered when adding an aggregate function to a calculated field through Query Builder	QAT-17590
Query Builder	Avg(Distinct), Count(Distinct), Sum(Distinct) and Stddev_Samp aggregate functions are not present in the Diagram tab for INT data type on an SAP ASE connection	QAT-17593
Query Builder	The calculated field column got a weird name for the field alias when adding an aggregated function	QAT-17630
Query Builder	Queries with non-ANSI syntax are generated in the Query Builder for data sources without the "Convert from non-ANSI to ANSI syntax" option	QAT-17633
Query Builder	Duplicated values for the DateTime data type when setting values from the "Where Condition" window on a Teradata connection	QAT-17641
Query Builder	The Data Range tab is missing from the Where Condition window when the WHERE clause is deleted from a query and the Visualize Query button is clicked	QAT-17644
Query Builder	Preselected values for IN and NOT IN operators are lost in the "Where Condition" window	QAT-17699
Query Builder	"Implicit conversion from datatype 'VARCHAR' to '<numeric user-defined type>' is not allowed." error is encountered when adding a bind variable to a WHERE clause for any numeric UDT column on an SAP ASE connection	QAT-17700
Query Builder	"Object reference not set to an instance of an object" error is encountered when adding a calculated field to the GROUP BY clause through Query Builder	QAT-17702
Query Builder	"[Teradata Database] [3504] Selected non-aggregate values must be part of the associated group." error is encountered when a query containing an aggregate function for the calculated field with an alias is run	QAT-17727

Feature	Resolved Issue / Enhancement	Defect ID
Query Builder	"[Teradata Database] [3939] There is a mismatch between the number of parameters specified and the number of parameters required." error is encountered when a query containing two bind variables with the same name is run on a Teradata connection	QAT-17737
Query Builder	Aliases for calculated fields are used in the GROUP BY clause when generating a query through Query Builder on an SQL Server connection	QAT-17825
Query Builder	Unselected "Use fully qualified object names" option is not applied when generating a query through Query Builder on an SAP ASE and DB2 z/OS connections	QAT-17865
Query Builder	Wildcard characters are not included in the generated query when using Like Modifiers to search for a specified pattern in a Calculated field	QAT-17868
Query Builder	Varchar type is displayed in the Bind Variables window for a DATE data type variable on a Teradata connection	QAT-17927
Query Builder	Values for the Date datatype are displayed as timestamps in the Where Condition window on a Teradata connection	QAT-17988
Query Builder	In the Where Condition window, the values for LIKE and NOT LIKE operators contain wildcards when the Visualize Query button is clicked in Query Builder	QAT-17992
Query Builder	Calculated field names got the weird name in the Where condition window when the Visualize Query button is clicked in Query Builder	QAT-18000
Query Builder	Calculated field names got the weird name in Diagram Grid when the Visualize Query button is clicked in Query Builder	QAT-18010
Query Builder	"Domain error during explicit conversion of INT NULL value " to a BIT field..." error is encountered when opening a Query Builder file with a query created on an SAP ASE connection	QAT-18023
Query Builder	The subquery title got the weird name when in the Where Condition window, the "Subquery..." button is clicked	QAT-18029
Query Builder	"[Teradata Database] [5628] Column <value> not found in <database.table>." error is encountered when generated query containing multiple values for a calculated field in the Where Condition window is run on a Teradata connection	QAT-18031
Query Builder	Values for a DATE data type bind variables are formatted as timestamp values in the Bind Variable window	QAT-18049
Query Visualization	Comments cannot be removed when the query is changed in Query Builder and the Visualize Query button is clicked	QAT-18058
Query Visualization	"ERROR [42702] [IBM][DB2] SQL0203N A reference to column <column name> is ambiguous." error is encountered when a query is run after visualization on a DB2 z/OS connection	QAT-17513
Query Visualization	"Incorrect syntax near '...' " error is encountered when a query containing a getdate() function in the WHERE clause is visualized and run on an SAP ASE connection	QAT-17518

Feature	Resolved Issue / Enhancement	Defect ID
Query Visualization	The single quotes around the values for IN/NOT IN operators are removed the Visualize Query button is clicked in the Query Builder on a Teradata connection	QAT-17534
Query Visualization	Single quotes around values for DATE datatype are added when the Visualize Query button is clicked in the Query Builder on Teradata and DB2 z/OS connections	QAT-17541
Query Visualization	CASE expression in the GROUP BY clause disappears when the Visualize Query button is clicked in the Query Builder tab on a Teradata connection	QAT-17545
Query Visualization	Additional parentheses are added in the WHERE clause when the Visualize Query button is clicked in the Query Builder	QAT-17551
Query Visualization	The minus sign in front of the value for a number in the CASE expression is changed to "unary_minus" text when the Visualize Query button is clicked in the Query Builder tab	QAT-17586
Query Visualization	The condition order as part of the JOIN statement is not changed when a query is visualized on a Teradata connection	QAT-17627
Query Visualization	JOIN statement translates to a WHERE clause after visualizing a query containing a subquery with a WHERE clause	QAT-17636
Query Visualization	"GROUP BY expressions must refer to column names." error is encountered when a query containing a calculated field in the GROUP BY clause is visualized and run	QAT-17690
Query Visualization	Global Where Clause is created when a query containing table and view aliases in the WHERE clause is visualized on Teradata, DB2 z/OS, or SAP ASE connections	QAT-17937
Query Visualization	Code format in Where clause is changed after visualization in Query Builder	QAT-17522
Query Visualization	The name of the calculated field is changed to the table alias name after visualizing a query that contains a table that bears the same name as one of its columns	QAT-17629
Query Visualization	The GROUP BY clause disappears from a query when the "Visualize Query" button is clicked on a Teradata connection	QAT-17649
Query Visualization	The GROUP BY clause disappears from the Query tab output of the Query Builder after visualizing a query where numbers are used instead of column names in a GROUP BY clause	QAT-17685
Query Visualization	Table alias will replace a value in WHERE condition if the alias name is the same as the value and the Visualize Query button is clicked in Query Builder	QAT-17695
Query Visualization	"The query cannot be modeled" error is encountered in the Query Builder when a query containing a JOIN clause is visualized on Teradata, SAP ASE, and DB2 z/OS connections	QAT-17531

Feature	Resolved Issue / Enhancement	Defect ID
Query Visualization	A column name is changed to the name of the table alias in a WHERE condition after visualization of a query containing a table that bears the same name as one of its columns	QAT-17544
Script Generation	The Create script for macros is not generated in editor when selecting "Editor as Script" option on a Teradata connection	QAT-18438
Script Results	"Connection does not exist" error is encountered when the users name for a Netezza connection contains spaces or non-alphanumeric characters and a query is run	QAT-18225
Script Results	"Implicit conversion from datatype 'VARCHAR' to '<numeric user-defined type>' is not allowed. Use the CONVERT function to run this query." error is encountered when a query containing the UNION operator and numeric UDT column on an SAP ASE connection is run	QAT-17514
Script Results	"syntax error at or near "\$1";Error while executing the query" error is encountered when a query containing the dollar sign (\$) for a variable is run on a PostgreSQL connection	QAT-17470
Script Results	"Incorrect syntax near CROSS" error is encountered when a query containing a CROSS JOIN clause is run on an SAP ASE connection	QAT-17592
SQL Editor	Toolbar icons are not shown when the SQL Editor is open	QAT-17684
Workbook	Toad Workbook becomes unresponsive when opening a workbook file that contains subqueries, and the connection dialog is canceled	QAT-18063
Workbook	An additional subquery is created in Query Builder when a query contains the UNION operator and a workbook connection is changed	QAT-17267
Workbook	"Error during cloning workflow" error is encountered when cloning a workflow containing a Publish step	QAT-17398
Workbook	"Attempt to locate entry in sysdatabases for database <host> by name failed - no entry found under that name. Make sure that name is entered properly." error is encountered when changing the WHERE clause in the previously saved .twf file, and the SAP ASE connection is used	QAT-17643
Workbook	Diagram and Query tabs are empty when reopening a workbook file containing a query with JOIN and WHERE clauses on the DateTime data type column on an SAP ASE connection	QAT-17647
Workbook	"[Teradata Database] [3706] Syntax error: expected something between the word 'Workbook_WF1_' and '-.'" error is encountered when a Workflow containing a Toad View for a Teradata connection is run	QAT-17653
Workbook	The name of the calculated column is changed to "Calculated" in the Diagram tab when opening a workbook file	QAT-17688

Feature	Resolved Issue / Enhancement	Defect ID
Workbook	A Cross-Connection is created in Query Builder when changing the query containing the UNION operator, and then changing a Teradata connection in Workbook	QAT-17689
Workbook	The Query tab disappears from Query Builder when reopening a workbook file containing a query with a UNION operator on a Teradata connection	QAT-17692
Workbook	UNION operator and Subquery are duplicated in the Workbook Query Builder after changing a DB2 Z/OS direct connection	QAT-17777
Workbook	The UNION operator and the following SELECT statement are missing in reopened workbook file when a Teradata connection is changed	QAT-17934
Workbook	Toad Workbook becomes unresponsive when opening a Query Builder file containing a subquery on a Teradata connection	QAT-17941
Workbook	Workflow never finishes when the connection of the workflow is changed	QAT-17943
Workbook	"Access denied for user '<power user>' cannot create non-secured folder." error is encountered when Power Users publish a workbook to the "No folder assigned" folder on Toad Intelligence Central	QAT-18003
Workbook	"Need more information to connect" pop-up window is encountered in Toad Workbook when changing a Teradata connection and then clicking on the 'Edit Sample' link in a Transform and Cleanse step	QAT-18020
Workbook	The Edit Sample link is not clickable on Transform and Cleanse step in opened workbook file when a workflow is created on a Teradata connection	QAT-18021
Workbook	"Object reference not set to an instance of an object." error is encountered when a workbook containing a Pivot Excel step is run	QAT-18024
Workbook	"Can't convert the imported data to the specified data types" error is encountered when publishing a workbook containing a Pivot Grid step with JOIN clause on a Teradata connection	QAT-18118
Workbook	Timestamp suffix as part of the report names is not applied for Pivot grid, Transform and Cleanse, and Dimensional View steps in a workbook if the Overwrite option is checked	QAT-18119
Workbook	"Cannot rename a sheet to the same name as existing sheet. Export is canceled" error is encountered when a workbook containing multiple Excel Pivot View steps for exporting data into a single Excel file with different worksheet names is run	QAT-18154
Workbook	"Pivot cannot be published: Duplicate column name 'oh_'" error is encountered when a workbook containing a Pivot Excel step for a Teradata connection is run	QAT-18166
Workbook	Date values for bind variables are not saved in the workbook's workflows when reopening a workbook file	QAT-18168

Feature	Resolved Issue / Enhancement	Defect ID
Workbook	"Failed to change connection. This Query Builder uses some objects that are not available in your connection" error is encountered when the workbook file contains a query with the UNION operator and a Teradata connection is changed	QAT-18169
Workbook	A Teradata connection cannot be changed in the workbook's workflow that contains a query and a subquery when disconnecting from a previous connection and connecting to a new one	QAT-18170
Workbook	The sheets order in the exported Excel file doesn't follow the order of the reports for created Pivot Grids in the workbook workflow	QAT-18172
Workbook	"Remove the table from query" error is encountered in a workbook that includes a query that contains two or more SELECT statements when each SELECT statement is run separately	QAT-18175
Workbook	"Key cannot be null. Parameter name: key" error is encountered in the workbook when visualizing a query in Query Builder	QAT-18198
Workbook	"Can't convert the imported data to the specified data types" error is encountered when a workbook file containing a pivot grid with added grand totals for each column/row is run	QAT-18213
Workbook	"Connection Not connected is not available. Select a working connection for this workflow." error is encountered when cloning a workflow containing a publish step	QAT-18441
Workbook	Toad Workbook becomes unresponsive when opening a workbook file containing a subquery or a UNION operator on a Microsoft SQL Azure connection	QAT-18287

Enhancements in 6.1

- The **QUALIFY** clause with the **ROW_NUMBER** function replaced the **TOP n** operator when generating and visualizing a query through a Query Builder on a Teradata connection. This approach removes the [restrictions](#) that come with using the TOP n operator. Queries with the TOP n operator that are not subject to any limitations can still be successfully run in Toad Data Point.

Known Issues

The following is a list of issues known to exist at the time of this release.

Feature	Platform	Known Issue	Defect ID
General	SAP ASE	Using SAP ADO.NET client and SAP ODBC driver it is not possible to convert any character set to all other character sets.	TMB-1850
General	Sybase ASE	Currently, if you open a Toad file in Toad Data Point 3.0 or later that contains a connection to Sybase ASE and was saved in Toad for Data Analysts 2.7 (or earlier) the file opens in an untitled Editor window. Use the following workaround which is for a Query Builder file, but a similar method can be used for any Toad file. Workaround 1:	N/A

1. If you receive a message stating that the saved file cannot be opened, close the message pop-up. You will see that your Toad Query Builder document is open in an Editor window. Send this document to the Query Builder (**Editor | Send to Query Builder**).
2. Save the new Query Builder document as a new Toad file.

Workaround 2:

1. Open the Toad file in Notepad.
2. Use **Find and Replace** to change all instances of "sybase" (all lowercase) to "Sybase" (first character uppercase, with the rest lowercase).

General	Excel	If an Excel file is open in Toad, you cannot open the same file in a separate Excel instance. To review this and other limitations when using Excel in the Web Browser, see "Considerations When Using the WebBrowser Control" at: http://support.microsoft.com/kb/304662 .	ST42486
General	Salesforce	After successfully changing the password or token for a Salesforce connection in Toad, attempting to open a Toad document created in a previous version (3.7 or earlier) using this connection results in a "Could not resolve connection" error. Workaround: Recreate the Toad document (Import/Export template, Query Builder file, Automation script, etc.) using Toad Data Point 3.8 or later.	N/A
Installation/ Upgrade	All	(MSI installs on Windows 7) If you are using MSI to install Toad on Windows 7 with UAC enabled, you can install a file that adds a "Run as administrator" option when right-clicking the MSI file: http://www.symantec.com/connect/downloads/msi-run-administrator-context-menu-vista	N/A
		Toad Data Point does not support installation paths that contain UNICODE characters.	N/A
		Toad Data Point 3.0 or later doesn't support User IDs that contain Unicode characters.	ST90367, ST90372
		The Toad Data Point Read Only installation is read-only for all databases, with the exception of MySQL. If you are using a Read Only installation of Toad Data Point, you will be able to modify a MySQL (and only MySQL) database.	N/A
		Currently, you cannot install Toad Data Point to a path that contains non-English characters. By default, Toad Data Point installs IBM DB2 merge modules as part of the standard installation process. These merge modules only support English characters. Workaround (Stand-alone installation): In the Destination Folder page of the installer, only use a destination directory that contains English characters	ST66330
Installation	n/a	During installation on Windows 8, some users might encounter a prompt from Windows to install .Net Framework 3.5. Workaround: In the Windows prompt, click Skip this installation to instruct Windows <i>Not</i> to install .Net Framework	N/A

3.5.

Connections	ODBC	<p>Currently, Toad does not support ODBC connections to the following databases:</p> <ul style="list-style-type: none"> • Sybase Advantage • Oracle RDB • Progress OpenEdge • MySQL ODBC (The ODBC 3.51.17.0 driver is not supported, and attempting to connect using this driver results in columns not displaying for tables.) <p>Workaround: Upgrade the MySQL ODBC driver to 3.51.27.00 or later to display table columns.</p>	ST69744
Connections	Azure SQL Database	You need to install Microsoft Active Directory Authentication Library (adalsql.msi) to connect to Azure SQL Database using Active Directory Password Authentication.	QAT-14556
Connections	Access	<p>Currently, for a password-protected Access database, selecting Save password in the Connection Properties dialog does not preserve the password for the next Toad session.</p> <p>Workaround:</p> <ol style="list-style-type: none"> 1. To open a password-protected Access connection, right-click the connection in the Navigation manager and select Properties. 2. Select the Advanced tab and enter the password. 3. Select the Save password checkbox and click Connect. <p>Note: This will allow you to connect to the database and save the password for this session of Toad. Repeat the procedure if you re-launch Toad.</p>	ST94125
Connections	Vertica ODBC	<p>When using the Vertica ODBC driver version 6.1.1, data containing UTE-8 characters does not display correctly.</p> <p>Workaround: Right-click the Vertica ODBC connection in the Connections Manager and select Properties. In the Connection Properties dialog, in the General tab, enter the following in the ConnectionString field: ColumnsAsChar=0</p>	ST109484
Connections	Amazon Redshift	You might experience problems after a Redshift connection is unexpectedly dropped.	QAT-2194
Connections	Amazon Redshift	After canceling a Redshift query it might continue to run on the server.	QAT-2195
Connections	Amazon Redshift	<p>When a Redshift connection in Toad is inactive for a period of time, attempting to access the connection can result in an error.</p> <p>Workaround: Change the Windows TCP/IP timeout settings as recommended by Redshift. See "To change TCP/IP timeout settings" at http://docs.aws.amazon.com/redshift/latest/mgmt/connecting-firewall-guidance.html.</p> <p>Caution: Editing your Registry incorrectly can cause serious, system-wide problems. It is advised that you back up your</p>	N/A

		registry before modifying it.	
Connections	N/A	Exported connections: A connection file exported from Toad Data Point 3.6 or later cannot be imported into version 3.5 or earlier.	N/A
Connections	MongoDB	For a MongoDB 3.0 (or later) connection, the user must have Read/Write privileges in the MongoDB database in order to view sub-tables (MongoDB embedded documents).	TIC-5520
Automation	All	<p>When you use a Set Variable activity with a String type variable for a VARCHAR type column and during its run you input a value that is numerical only you may get a "Error converting data type varchar to numeric." error.</p> <p>Workaround: Use a convert function in your query so that Toad uses the correct datatype, e.g.:</p> <pre>SELECT * from table WHERE my_varchar_column = TO_CHAR(:BIND_VAR)</pre>	QAT-16234
Automation	All	<p>If Toad Data Point 6.1 is launched as administrator on Windows 7 systems with UAC turned on and Outlook running, the auto-populate SMTP server info and contact list in Automation Email and Error Emails does not function properly.</p> <p>Workaround: Submit this information manually. Another option is to either run Toad Data Point 6.1 not as administrator, or turn UAC off, or close Outlook when adding the Send Email activity in Automation.</p>	ST80857
Automation	All	<p>When Toad runs as <i>an application</i> in a Citrix environment, scheduled scripts might not execute if the user who scheduled the tasks is not logged on. In addition, an "Access Denied" error is logged for the scheduled task in the Windows Scheduler.</p> <p>Workaround: Install and run Toad as a desktop when using Toad with Citrix.</p>	N/A
Automation	All	An 'System.Windows.Automation.Peers.AutomationPeer' sometimes occurs during application start.	QAT-14566
Data	ODBC - Ingress	<p>In some cases, earlier Ingress ODBC drivers display an "Invalid number of columns or parameters specified" error message when displaying data that has Unicode characters.</p> <p>Workaround: Download the latest Ingres 9.3 ODBC driver.</p>	N/A
Execution Plan	SQL Server	<p>You cannot generate an estimated execution plan for a local temporary table because the execution plan uses a different connection to generate the plan and does not know about the temp table.</p> <p>Workaround: Use the actual execution plan button to generate execution plans for SQL that contains a temp table.</p>	N/A
Export Wizard/ One Click Export	Access, Excel	<p>Limitations when exporting fractional seconds:</p> <ul style="list-style-type: none"> When exporting to an Access Database File, exports do not support fractional seconds, so the additional data is not exported. 	N/A

- When exporting to an Excel instance, exports support only 3-digits for fractional seconds. However, if you export to an Excel file, it supports all fractional seconds.

Import Wizard	Excel	Attempting to import data that was exported to an Excel instance where the fractional seconds were truncated results in an error.	N/A
		Attempting to import data from a template that contains multiple worksheets results in an error.	ST77978
	ODBC - DB2 iSeries, Netezza	Currently, the Truncate table checkbox is disabled on the Select Target page when using an ODBC connection to a DB2 iSeries or Netezza database.	ST77986
	Oracle, DB2	When importing data using the Add Query feature, BLOB data is not imported even though the dialog and log indicate that the import was successful.	ST77255
Library	N/A	A UAC setting at the highest level might interfere with the ability to drag a file to the Library window (from Windows Explorer) to add it to the Library. Workaround: Set UAC to the default level to enable adding a file by dragging it to the Library window.	N/A
Local Storage	N/A	Issue: Local Storage is incompatible with previous versions of Toad. If you upgrade to Toad Data Point 3.6 from a previous version, Local Storage upgrades silently and can no longer be used by the previous version of Toad Data Point (3.5 or earlier). If you plan to uninstall 3.6 after installing it and then resume using a previous version, backup your Local Storage data prior to installing 3.6. To backup Local Storage data <ol style="list-style-type: none"> 1. Navigate to C:\Users\username\AppData\Local\Quest Software\Toad Data Point Hub Data. 2. Make a copy of the <i>Toad Data Point Hub Data</i> folder and save it using a new name (such as <i>Toad Data Point Hub Data 3.5 backup</i>). If you uninstall 3.6, just move this copy back and use the original folder name. 	QAT-3812
Object Explorer/ Database Explorer	Sybase ASE	When viewing a table that contains a BIGTIME data type column, attempting to select the Data tab causes Toad to unexpectedly quit.	N/A
Object Explorer/ Database Explorer	Sybase ASE	Currently, only foreign key constraints can be added or modified for existing Sybase ASE tables.	ST55111
	Oracle 11g	On the Create/Alter User window, if you are modifying a password, you must enter the password in the proper case. You do not need to surround the password with double quotes. If you enter the password in lowercase on the Create/Alter User window, and the generated script has a SQL command containing the password in lowercase, you will need to type the password in lowercase to login. If you enter the password in uppercase on the Create/Alter	ST66705

		User window, and the generated script has a SQL command containing the uppercase in lowercase, then you will need to type the password in uppercase to login.	
Publishing Wizard	N/A	Users with Active Directory authentication and with TIC 4.0.3 and TDP 5.0.3 will not be able to see automation logs. This issue does not occur when TIC and TDP are the same versions.	QAT-14578
Query/ Query Builder	All	The copy of the sub-query that contains the Union All operator is created after the connection in the Workflow is changed	QAT-17267
Query/ Query Builder	All	The Query Builder currently uses a 24-hour format for timestamps. Attempting to run a query with a date range that includes a 12-hour timestamp format results in incorrect formatting of the timestamp.	ST78729
Query/ Query Builder	Local Storage	Currently, in a cross-connection query using Local Storage, Toad does not support quoted table alias names (example, the table alias "foo bar"). Quoted column names are supported.	ST86483
Save As Dialog (Library)		<p>For some users who enabled the Automatically add files to library on open feature, the Save and Cancel buttons in the "Save As" dialog are disabled. This issue was encountered in a Windows 10 environment. See knowledge base article KB235265.</p> <p>Workaround 1: Press Enter when the Save As dialog is open to save your file.</p> <p>Workaround 2: Select Tools Options Environment General and clear the Automatically add files to library on open check box. If you use this workaround, newly-saved files and opened files are no longer automatically added to the Library.</p>	N/A
Toad Intelligence Central	All	When data includes high-precision numbers (i.e., those with a large number of decimal places), results from publishing to Intelligence Central may not always be as expected. In some cases, data may be truncated to include not more than 15 significant digits.	N/A
Toad Intelligence Central	N/A	<p>Background: In Toad Data Point 3.5 or later, your Intelligence Central user name must be lower-case.</p> <p>Issue: In Toad Data Point 3.5 (or later), if you attempt to open a previously-saved connection to Intelligence Central 2.2 (or earlier) in which the user name contains upper-case letters, the connection will error.</p> <p>Solution: Upgrade to Intelligence Central 2.3.</p>	N/A
Data Compare	N/A	Data Compare cannot be performed on a very large number of tables with many columns. If maximum compilation size is exceeded you will receive a message with a recommendation to lower the number of tables or columns compared	QAT-14218
User Interface	N/A	<p>Issue: Toolbar sub-menus and buttons disappear when selected. If you experience this issue, use the following workaround.</p> <p>Workaround:</p> <ol style="list-style-type: none"> In Toad, select Help About and select the Application Data Directory link to open this directory. Then exit Toad. 	QAT-6045

2. In the App Data directory, open the Session sub-directory and delete the **Analyst.tss** file. Restart Toad.
3. In Toad, select **Tools | Configuration Wizard**. Click **Finish** to close the wizard without selecting an option. The default option will be applied.

Workbook	N/A	When you disconnect in Query Builder Toad may throw an error. Workaround: Backup your Workbook by clicking Save As and restart Toad Workbook.	N/A
----------	-----	---	-----

Third Party Known Issues

The following is a list of third party issues known to exist at the time of release of Toad Data Point 6.1.

Feature	Platform	Known Issue	ID
Connect to Database	DB2	If you are using the DB2 Client version 9.5, 9.7, or 10.1 in a Windows 8 or Windows Server 2012 environment, follow the instructions in IBM DB2 Technote 1618434: http://www-01.ibm.com/support/docview.wss?uid=swg21618434 .	N/A
Connect to Database	Excel	The following error is encountered when attempting to create a connection to an extremely large Excel file (for example, 20 MB or larger): "Microsoft. ODBC Excel Driver. System resource exceeded." For more information, see http://www.toadworld.com/products/toad-data-point/f/36/p/20201/40998.aspx . Workaround: Convert the Excel file to a CSV file.	N/A
Connect to Database	Oracle	(Oracle 10.2.0.1 client only) Attempting to connect to an Oracle database From Toad using the 10.2.0.1 Oracle client results in the following error: "ORA-24909: call in progress. Current operation canceled". This is a known issue with this Oracle client (http://www.dbmotive.com/oracle_error_codes.php?errcode=24909). Workaround: Upgrade your Oracle client to a later version and connect to the Oracle database.	N/A
Connect to Database	Oracle 11 only	When connecting to Oracle 11, you must enter the password in the proper case because passwords are case-sensitive.	N/A
Toad Data Point Automation	All	Automation in Toad Data Point 3.3 or later requires .NET Framework 4.5 (or later). If you are using .NET Framework 4.0 without .NET Framework 4.5 (such as in Windows XP), you may encounter the following: <ul style="list-style-type: none"> • After running a scheduled Automation script, Toad generates an error message even though the script executes successfully. • In a Toad Intelligence Central environment, after running any published Automation script (scheduled or un-scheduled), Toad generates an error message even though the script executes successfully. Workaround: Upgrade your Windows OS to Windows 7 and install .NET Framework 4.5 or later.	N/A
Data	ODBC- DB2 z/OS	In compatibility mode, the ODBC driver does not return enough information for the CommandBuilder to correctly generate update	N/A

Feature	Platform	Known Issue	ID
		or insert statements.	
Editor	Teradata	<p>If you experience performance issues using a Teradata connection, especially when using code completion in the Editor, use the Teradata Non-X views (instead of the X views).</p> <p>To use Teradata Non-X views</p> <ul style="list-style-type: none"> Select Tools Options Database Teradata and select the Use Non-X views in Object Explorer option. 	N/A
Export Wizard/ One Click Export	All	<p>To export to an Office 2003 or 2007 Excel instance, the Office Primary Interop Assemblies (PIAs) must be installed. You can install the PIAs from one of the following locations:</p> <p>2003 PIAs: http://www.microsoft.com/downloads/details.aspx?FamilyID=3c9a983a-ac14-4125-8ba0-d36d67e0f4ad&DisplayLang=en</p> <p>2007 PIAs: http://www.microsoft.com/downloads/details.aspx?familyid=59DAEBAA-BED4-4282-A28C-B864D8BFA513&displaylang=en</p>	N/A
Export Wizard/ One Click Export	Excel	Avoid using Excel for exporting if your data has numeric values that require a high precision because Excel's precision is limited to 15 digits. If you export numbers with more precision, the values are rounded. If you export boundary numbers (max, min), rounded numbers will exceed the data type limit.	N/A
Import Wizard	DB2	When importing data using the Add Query feature and selecting a Single new table, TIMESTAMP data types are mapped to DATETIME data types.	N/A
Object Explorer	Cloudera Impala	A view is represented as a table in Impala, so views display as tables in Toad. For more information, see https://issues.cloudera.org/browse/IMPALA-1697 .	N/A
Object Explorer/ Database Explorer	Teradata	<p>You may experience issues if you attempt to view object details and your Teradata .Net Data Provider version does not correspond to the Teradata database version to which you are connecting. Issues include:</p> <ul style="list-style-type: none"> Object details for a View containing a DATE data type column do not display. Object details for a Table containing a NUMBER data type column do not display. <p>Workaround: Install the Teradata .Net Data Provider version that corresponds with the Teradata database version to which you are connecting. For example, if connecting to Teradata database version 14, use Teradata .Net Data Provider 14.11.</p>	N/A
Object Explorer/ Database Explorer	DB2 iSeries	The primary Key column of an iSeries table displays as Nullable in the Database Explorer even though the Not Null checkbox was not selected when creating the table.	N/A
Query Builder	Sybase ASE	<p>Cross-connection query: Sybase has difficulty dealing with numeric literals in queries. You may encounter the following error:</p> <pre>Implicit conversion from datatype 'CHAR' to 'INT' is not allowed. Use the CONVERT function to run this query.</pre>	ST96868

Feature	Platform	Known Issue	ID
		<p>when attempting to execute a cross-connection query such as:</p> <pre>Select * from table where numeric_column = 50</pre> <p>Work-around: Change the query to something similar to the following using the cast function:</p> <pre>Select * from table where numeric_column = CAST(50 AS SIGNED)</pre>	
Query Builder	Cassandra and Excel/Access	<p>Cross-connection query: A query between Cassandra and either Excel 2010 or Access 2010 might fail to execute and display a lost-connection error.</p> <p>Workaround: Upgrade to Excel 2013 or Access 2013 (or later).</p>	N/A

Getting Started

Contents of the Release Package

The Toad release package contains the following products:

1. Toad Data Point 6.1
2. Product Documentation, including:
 - Installation Guide
 - Online Help
 - Release Notes
 - User Guide
 - Getting Started Guide

Installation Instructions

See the *Toad Data Point Installation Guide* for more information.

Product Licensing

To activate a purchased commercial license

1. In the Licensing dialog, enter your license (Authorization) key.
2. Enter the site message included with the license key.

Globalization

This section contains information about installing and operating this product in non-English configurations, such as those needed by customers outside of North America. This section does not replace the materials about supported platforms and configurations found elsewhere in the product documentation.

This release is Unicode-enabled and supports any character set. It supports simultaneous operation with multilingual data. This release is targeted to support operations in the following regions: North America, Western Europe and Latin America, Central and Eastern Europe, Far-East Asia, Japan.

This release has the following known capabilities or limitations: If the user overrides the default installation path during installation, the new path specification cannot contain Unicode characters.

About Us

Quest creates software solutions that make the benefits of new technology real in an increasingly complex IT landscape. From database and systems management, to Active Directory and Office 365 management, and cyber security resilience, Quest helps customers solve their next IT challenge now. Around the globe, more than 130,000 companies and 95% of the Fortune 500 count on Quest to deliver proactive management and monitoring for the next enterprise initiative, find the next solution for complex Microsoft challenges and stay ahead of the next threat. Quest Software. Where next meets now. For more information, visit www.quest.com.

Contact Quest

For sales or other inquiries, visit www.quest.com/contact.

Technical Support Resources

Technical support is available to Quest customers with a valid maintenance contract and customers who have trial versions. You can access the Quest Support Portal at <https://support.quest.com>.

The Support Portal provides self-help tools you can use to solve problems quickly and independently, 24 hours a day, 365 days a year. The Support Portal enables you to:

- Submit and manage a Service Request
- View Knowledge Base articles
- Sign up for product notifications
- Download software and technical documentation
- View how-to-videos
- Engage in community discussions
- Chat with support engineers online
- View services to assist you with your product

Copyright

© 2023 Quest Software Inc.
ALL RIGHTS RESERVED.

This guide contains proprietary information protected by copyright. The software described in this guide is furnished under a software license or nondisclosure agreement. This software may be used or copied only in accordance with the terms of the applicable agreement. No part of this guide may be reproduced or transmitted in any form or by any means, electronic or mechanical, including photocopying and recording for any purpose other than the purchaser's personal use without the written permission of Quest Software Inc.

The information in this document is provided in connection with Quest Software products. No license, express or implied, by estoppel or otherwise, to any intellectual property right is granted by this document or in connection with the sale of Quest Software products. EXCEPT AS SET FORTH IN THE TERMS AND CONDITIONS AS SPECIFIED IN THE LICENSE AGREEMENT FOR THIS PRODUCT, QUEST SOFTWARE ASSUMES NO LIABILITY WHATSOEVER AND DISCLAIMS ANY EXPRESS, IMPLIED OR STATUTORY WARRANTY RELATING TO ITS PRODUCTS INCLUDING, BUT NOT LIMITED TO, THE IMPLIED WARRANTY OF MERCHANTABILITY, FITNESS FOR A PARTICULAR PURPOSE, OR NON-INFRINGEMENT. IN NO EVENT SHALL QUEST SOFTWARE BE LIABLE FOR ANY DIRECT, INDIRECT, CONSEQUENTIAL, PUNITIVE, SPECIAL OR INCIDENTAL DAMAGES (INCLUDING, WITHOUT LIMITATION, DAMAGES FOR LOSS OF PROFITS, BUSINESS INTERRUPTION OR LOSS OF INFORMATION) ARISING OUT OF THE USE OR INABILITY TO USE THIS DOCUMENT, EVEN IF QUEST SOFTWARE HAS BEEN ADVISED OF THE POSSIBILITY OF SUCH DAMAGES. Quest Software makes no representations or warranties with respect to the accuracy or completeness of the contents of this document and reserves the right to make changes to specifications and product descriptions at any time without notice. Quest Software does not make any commitment to update the information contained in this document.

If you have any questions regarding your potential use of this material, contact:

Quest Software Inc.
Attn: LEGAL Dept
4 Polaris Way
Aliso Viejo, CA 92656

Refer to our web site (www.quest.com) for regional and international office information.

Patents

Quest Software is proud of our advanced technology. Patents and pending patents may apply to this product. For the most current information about applicable patents for this product, please visit our website at www.quest.com/legal.

This product includes patent pending technology. For the most current information about applicable patents for this product, please visit our website at www.quest.com/legal.

Trademarks

Quest, Quest Software, Benchmark Factory, Spotlight, LiteSpeed, SQL Navigator, vWorkspace, Toad, and the Quest logo are trademarks of Quest Software Inc. in the U.S.A. and other countries. For a complete list of Quest Software trademarks, please visit our website at www.quest.com/legal. Microsoft, Windows, Windows Server,

Visual Studio, SQL Server, SharePoint, Access and Excel are either registered trademarks or trademarks of Microsoft Corporation in the United States and/or other countries. Oracle is a trademark or registered trademark of Oracle and/or its affiliates in the United States and other countries. Citrix® and XenApp™ are trademarks of Citrix Systems, Inc. and/or one or more of its subsidiaries, and may be registered in the United States Patent and Trademark Office and in other countries. SAP is the registered trademark of SAP AG in Germany and in several other countries. IBM and DB2 are registered trademarks of International Business Machines Corporation. MySQL is a registered trademark of MySQL AB in the United States, the European Union and other countries. Google and Google Analytics are registered trademarks of Google Inc. PostgreSQL is a registered trademark of the PostgreSQL Community Association of Canada. Subversion is a trademark of the Apache Software Foundation. Snowflake® is a registered trademark of Snowflake Inc. in the United States and/or other countries. All other trademarks, servicemarks, registered trademarks, and registered servicemarks are property of their respective owners.

Toad Data Point 6.1
Release Notes
Tuesday, June 6, 2023