

Metalogix® StoragePoint 6.3

Large File Support Guide



© 2023 Quest Software Inc. ALL RIGHTS RESERVED.

This guide contains proprietary information protected by copyright. The software described in this guide is furnished under a software license or nondisclosure agreement. This software may be used or copied only in accordance with the terms of the applicable agreement. No part of this guide may be reproduced or transmitted in any form or by any means, electronic or mechanical, including photocopying and recording for any purpose other than the purchaser's personal use without the written permission of Quest Software Inc.

The information in this document is provided in connection with Quest Software products. No license, express or implied, by estoppel or otherwise, to any intellectual property right is granted by this document or in connection with the sale of Quest Software products. EXCEPT AS SET FORTH IN THE TERMS AND CONDITIONS AS SPECIFIED IN THE LICENSE AGREEMENT FOR THIS PRODUCT, QUEST SOFTWARE ASSUMES NO LIABILITY WHATSOEVER AND DISCLAIMS ANY EXPRESS, IMPLIED OR STATUTORY WARRANTY RELATING TO ITS PRODUCTS INCLUDING, BUT NOT LIMITED TO, THE IMPLIED WARRANTY OF MERCHANTABILITY, FITNESS FOR A PARTICULAR PURPOSE, OR NON-INFRINGEMENT. IN NO EVENT SHALL QUEST SOFTWARE BE LIABLE FOR ANY DIRECT, INDIRECT, CONSEQUENTIAL, PUNITIVE, SPECIAL OR INCIDENTAL DAMAGES (INCLUDING, WITHOUT LIMITATION, DAMAGES FOR LOSS OF PROFITS, BUSINESS INTERRUPTION OR LOSS OF INFORMATION) ARISING OUT OF THE USE OR INABILITY TO USE THIS DOCUMENT, EVEN IF QUEST SOFTWARE HAS BEEN ADVISED OF THE POSSIBILITY OF SUCH DAMAGES. Quest Software makes no representations or warranties with respect to the accuracy or completeness of the contents of this document and reserves the right to make changes to specifications and product descriptions at any time without notice. Quest Software does not make any commitment to update the information contained in this document.

If you have any questions regarding your potential use of this material, contact:

Quest Software Inc.
Attn: LEGAL Dept.
4 Polaris Way
Aliso Viejo, CA 92656

Refer to our Web site (<https://www.quest.com>) for regional and international office information.


Patents


Quest Software is proud of our advanced technology. Patents and pending patents may apply to this product. For the most current information about applicable patents for this product, please visit our website at <https://www.quest.com/legal>.

Trademarks

Quest, the Quest logo, and Metalogix are trademarks and registered trademarks of Quest Software Inc. and its affiliates. For a complete list of Quest marks, visit <https://www.quest.com/legal/trademark-information.aspx>. All other trademarks and registered trademarks are property of their respective owners.

Legend

 **CAUTION:** A caution icon indicates potential damage to hardware or loss of data if instructions are not followed.

 **IMPORTANT, NOTE, TIP, MOBILE OR VIDEO:** An information icon indicates supporting information.

Metalogix® StoragePoint
Updated May 2023
Version 6.3

Contents

Large File Support	4
Users should know:	4
User Experience	5
Using Large File Upload	5
Large File Upload Details	7
Editing Large File Uploads	9
Versioning	9
About Us	10
Contacting Quest	10
Technical Support Resources	10

Large File Support

SharePoint does not support the uploading of files greater than 2GB, or in some cases, 10 GB in size. Web Applications also have upload size limits. In SharePoint 2010 and newer, Metalogix StoragePoint has a feature that allows a custom upload interface to circumvent this limitation, *if the Document Library is in the scope of an active StoragePoint profile*. By dragging the file to the custom upload page, the document is moved to the endpoint, and a link (aspx file) is placed in the document library to access that file. The link will have a content type of 'StoragePoint Document Link'. The BLOB will be externalized to the endpoint.

If for whatever reason StoragePoint is uninstalled, these large file uploads will no longer be available, because the endpoint is no longer available.

Users should know:

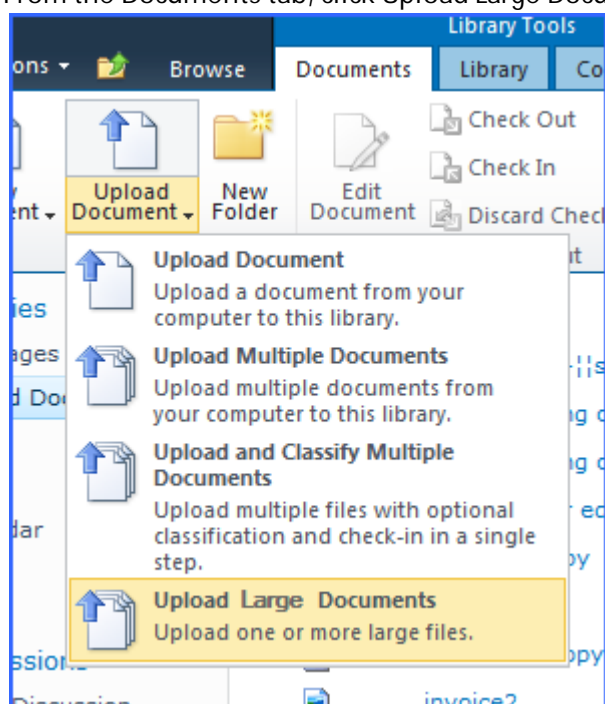
- A user with the ability to edit document properties should not change the content type from 'StoragePoint Document Link'.
- The aspx file will not be subject to metadata requirements normally placed on a document content type; there can be list data fields, but changing the content type to get those fields is not supported.
- Open or download can only be performed by clicking on the name of the document.
- Previous versions can only be accessed from the Large File Details Download link.
- The option to 'download a copy' is not supported.
- Office Web Applications are not supported.
- The file does not need to be large to use this interface, but files smaller than the upload limit for the web application will not generate a link; they will be externalized to the endpoint like a regular upload.
- The recommended maximum number of files to be used with the Large File Upload interface is 100.

User Experience

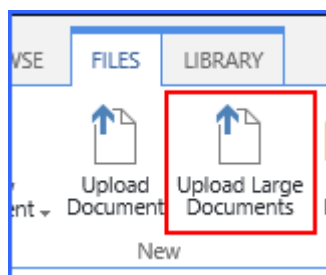
Using Large File Upload

A user who has access to upload files will see an option to upload large files with a different type of interface. This tool is only available in the Document Library list.

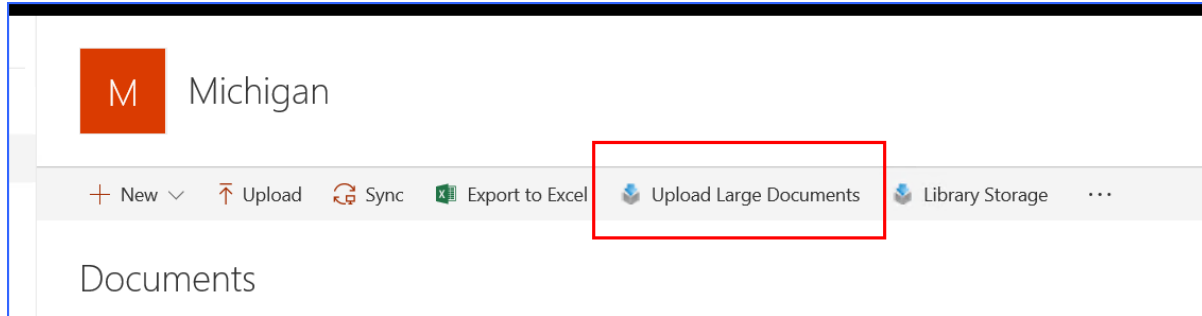
From the Documents tab, click Upload Large Documents from the Upload Document dropdown.



Or click the Upload Large Documents button in the Files ribbon.

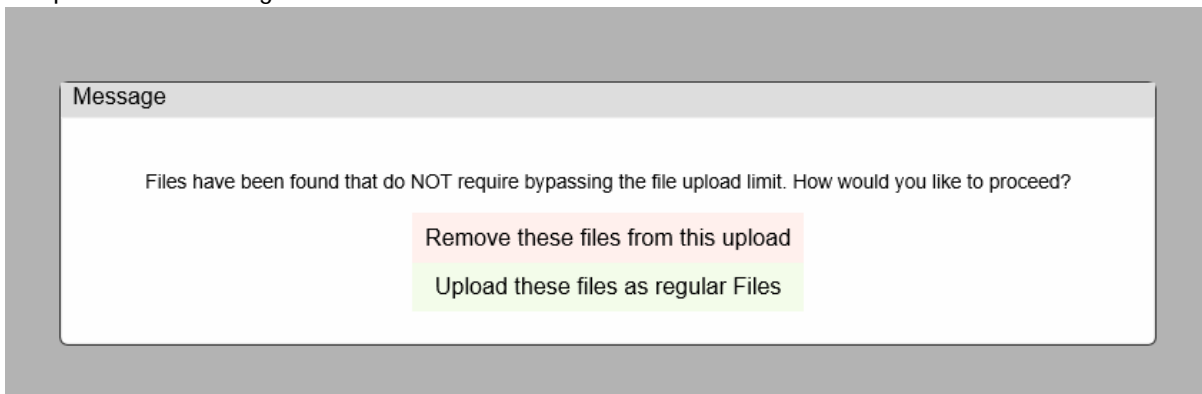


Or use the link in the ribbon in the library of the SharePoint 2019/Subscription Edition Modern UI.

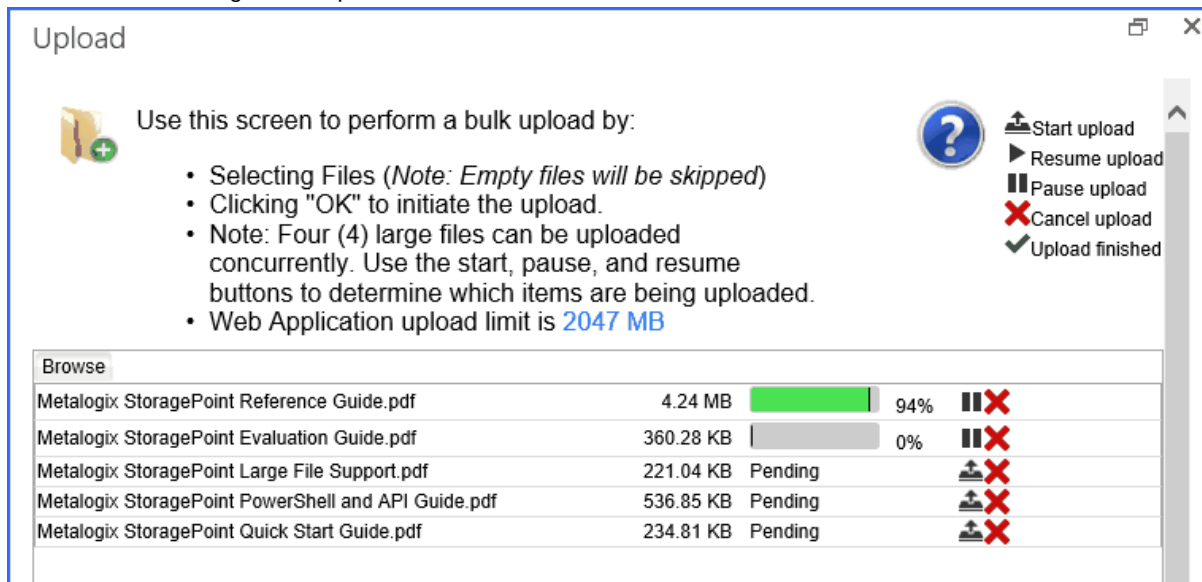


A new window opens. Drag files from the windows explorer onto the page.

If there are files that are less than the upload limit, a notice will ask whether to remove these or to upload them as regular files.



and click OK to begin the upload.

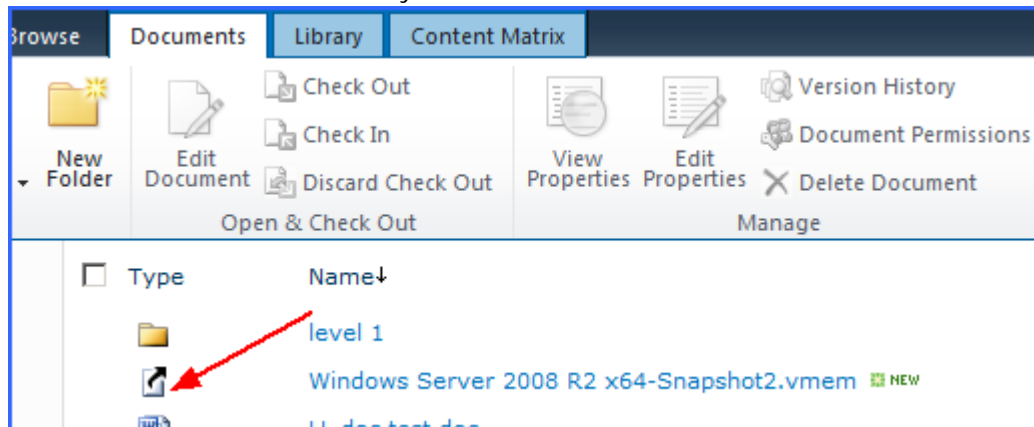


The files can be managed to reduce resource usage, by using the pause, resume, start upload or cancel buttons to the right of the file name, after clicking the OK button. If left alone, the files will upload on their own.

- Clicking the OK button begins the upload.
- By default there will be 2 files being uploaded at the same time.

- A maximum of four files can be uploading at the same time.
- Paused files will not be uploaded automatically; to continue with the upload they should be resumed.
- If pause is clicked for a file in progress, it does not enable another file to begin the upload; it only pauses that file.
- The Start Upload button will be displayed when there are more than 2 files to be upload and not more than 4 in progress (paused/resumed). The 5th file will not have this button displayed until one of the uploads is completed.
- The Pause All button at the bottom will pause all running uploads; toggle this button to pause and resume running uploads.
- The recommended maximum number of files to be used with the Large File Upload interface is 100.

The item in the document library will look like this:

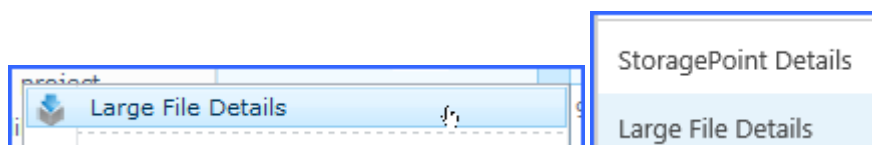


Click the name of the file to open or download.

i **NOTE:** The link that will display in the Versions window or in the Edit Properties window will not be correct and should not be used to access the file. Also, if the File Size column is displayed in the view, for Large File Uploads, that data is the size of the aspx file, not the large file size. Use the [Large File Details](#) window for these operations.

Large File Upload Details

Access to the Large File Upload details is found on the context menu:



The details will show the item as the aspx, but the other details relate to the location of the actual content.

The data shown in the Large File Details window will depend on the access of the logged in user. A Site Collection or Farm Administrator will see the same data they would see on StoragePoint Details, but a user with contribute access will see only the name and size of the file.

Farm and Site Collection Administrators' view of Large File Details:

The screenshot shows the 'StoragePoint Large File Details' window for an administrator. The window title is 'StoragePoint Large File Details' and it features the Metalogix StoragePoint logo in the top right corner. The main content area displays a table of file details:

Version(s)	Version 1.0
Item	120MB.txt (Download)
Item Location	Externalized (Stub)
Item Size	128.00 MB
Endpoint	SYSTEM CACHE
Adapter	FileSystem
Connection	PATH=\\Sp2010b-wfe1\qa_endpoint\System Cache;AUDITDELETE=False;BUFFERSIZE=8192;SHREDONDELETE=False;USEM ETA=False;
Folder	LFS
Filename	120MB_d76573e5-b446-4c00-bd7f-08a13391d7a7.txt
Other	Compression is Off and Encryption is Off

At the bottom right of the details table, there is a 'Copy Info' button. Below the table is a 'Close' button.

Contribute Level User's view of Large File Details. Use the download link on this page if the SharePoint link is not opening the file.

The screenshot shows the 'StoragePoint Large File Details' window for a contribute level user. The window title is 'StoragePoint Large File Details' and it features the Metalogix StoragePoint logo in the top right corner. The main content area displays a table of file details:

Version(s)	Version 1.0
Item	38 mg file.doc (Download)
Item Size	37.16 MB

The rest of the details table is empty. At the bottom right of the window, there is a 'Close' button.

Editing Large File Uploads

Files uploaded using the Large File Upload tool can't be edited like regular uploads. To edit the files, it must be checked out first. Open the file, save a copy locally, and upload the edited file using the large file upload interface. This will overwrite the current file.

Versioning

If versioning is enabled on the document library, the previous versions are accessed by selecting the version in the dropdown of the StoragePoint Large File Details window, and clicking the Download link.

About Us

Quest creates software solutions that make the benefits of new technology real in an increasingly complex IT landscape. From database and systems management, to Active Directory and Office 365 management, and cyber security resilience, Quest helps customers solve their next IT challenge now. Around the globe, more than 130,000 companies and 95% of the Fortune 500 count on Quest to deliver proactive management and monitoring for the next enterprise initiative, find the next solution for complex Microsoft challenges and stay ahead of the next threat. Quest Software. Where next meets now. For more information, visit www.quest.com.

Contacting Quest

For sales or other inquiries, visit www.quest.com/contact.

Technical Support Resources

Technical support is available to Quest customers with a valid maintenance contract and customers who have trial versions. You can access the Quest Support Portal at <https://support.quest.com>

The Support Portal provides self-help tools you can use to solve problems quickly and independently, 24 hours a day, 365 days a year. The Support Portal enables you to:

- Submit and manage a Service Request
- View Knowledge Base articles
- Sign up for product notifications
- Download software and technical documentation
- View how-to-videos
- Engage in community discussions
- Chat with support engineers online
- View services to assist you with your product