

Foglight® Cost Director 6.3.0  
**User and Administration Guide**



© 2023 Quest Software Inc.

**ALL RIGHTS RESERVED.**

This guide contains proprietary information protected by copyright. The software described in this guide is furnished under a software license or nondisclosure agreement. This software may be used or copied only in accordance with the terms of the applicable agreement. No part of this guide may be reproduced or transmitted in any form or by any means, electronic or mechanical, including photocopying and recording for any purpose other than the purchaser's personal use without the written permission of Quest Software Inc.

The information in this document is provided in connection with Quest Software products. No license, express or implied, by estoppel or otherwise, to any intellectual property right is granted by this document or in connection with the sale of Quest Software products. EXCEPT AS SET FORTH IN THE TERMS AND CONDITIONS AS SPECIFIED IN THE LICENSE AGREEMENT FOR THIS PRODUCT, QUEST SOFTWARE ASSUMES NO LIABILITY WHATSOEVER AND DISCLAIMS ANY EXPRESS, IMPLIED OR STATUTORY WARRANTY RELATING TO ITS PRODUCTS INCLUDING, BUT NOT LIMITED TO, THE IMPLIED WARRANTY OF MERCHANTABILITY, FITNESS FOR A PARTICULAR PURPOSE, OR NON-INFRINGEMENT. IN NO EVENT SHALL QUEST SOFTWARE BE LIABLE FOR ANY DIRECT, INDIRECT, CONSEQUENTIAL, PUNITIVE, SPECIAL OR INCIDENTAL DAMAGES (INCLUDING, WITHOUT LIMITATION, DAMAGES FOR LOSS OF PROFITS, BUSINESS INTERRUPTION OR LOSS OF INFORMATION) ARISING OUT OF THE USE OR INABILITY TO USE THIS DOCUMENT, EVEN IF QUEST SOFTWARE HAS BEEN ADVISED OF THE POSSIBILITY OF SUCH DAMAGES. Quest Software makes no representations or warranties with respect to the accuracy or completeness of the contents of this document and reserves the right to make changes to specifications and product descriptions at any time without notice. Quest Software does not make any commitment to update the information contained in this document.

If you have any questions regarding your potential use of this material, contact:

Quest Software Inc.  
Attn: LEGAL Dept.  
4 Polaris Way  
Aliso Viejo, CA 92656

Refer to our website (<https://www.quest.com>) for regional and international office information.

**Patents**

Quest Software is proud of our advanced technology. Patents and pending patents may apply to this product. For the most current information about applicable patents for this product, please visit our website at <https://www.quest.com/legal>.

**Trademarks**

Quest, the Quest logo, and Where next meets now are trademarks and registered trademarks of Quest Software Inc. For a complete list of Quest marks, visit <https://www.quest.com/legal/trademark-information.aspx>. "Apache HTTP Server", Apache, "Apache Tomcat" and "Tomcat" are trademarks of the Apache Software Foundation. Google is a registered trademark of Google Inc. Android, Chrome, Google Play, and Nexus are trademarks of Google Inc. Red Hat, JBoss, the JBoss logo, and Red Hat Enterprise Linux are registered trademarks of Red Hat, Inc. in the U.S. and other countries. CentOS is a trademark of Red Hat, Inc. in the U.S. and other countries. Fedora and the Infinity design logo are trademarks of Red Hat, Inc. Microsoft, .NET, Active Directory, Internet Explorer, Hyper-V, Office 365, SharePoint, Silverlight, SQL Server, Visual Basic, Windows, Windows Vista and Windows Server are either registered trademarks or trademarks of Microsoft Corporation in the United States and/or other countries. AIX, IBM, PowerPC, PowerVM, and WebSphere are trademarks of International Business Machines Corporation, registered in many jurisdictions worldwide. Java, Oracle, Oracle Solaris, PeopleSoft, Siebel, Sun, WebLogic, and ZFS are trademarks or registered trademarks of Oracle and/or its affiliates in the United States and other countries. SPARC is a registered trademark of SPARC International, Inc. in the United States and other countries. Products bearing the SPARC trademarks are based on an architecture developed by Oracle Corporation. OpenLDAP is a registered trademark of the OpenLDAP Foundation. HP is a registered trademark that belongs to Hewlett-Packard Development Company, L.P. Linux is a registered trademark of Linus Torvalds in the United States, other countries, or both. MySQL is a registered trademark of MySQL AB in the United States, the European Union and other countries. Novell and eDirectory are registered trademarks of Novell, Inc., in the United States and other countries. VMware, ESX, ESXi, vSphere, vCenter, vMotion, and vCloud Director are registered trademarks or trademarks of VMware, Inc. in the United States and/or other jurisdictions. Sybase is a registered trademark of Sybase, Inc. The X Window System and UNIX are registered trademarks of The Open Group. Mozilla and Firefox are registered trademarks of the Mozilla Foundation. "Eclipse", "Eclipse Foundation Member", "EclipseCon", "Eclipse Summit", "Built on Eclipse", "Eclipse Ready" "Eclipse Incubation", and "Eclipse Proposals" are trademarks of Eclipse Foundation, Inc. IOS is a registered trademark or trademark of Cisco Systems, Inc. and/or its affiliates in the United States and certain other countries. Apple, iPad, iPhone, Mac OS, Safari, Swift, and Xcode are trademarks of Apple Inc., registered in the U.S. and other countries. Ubuntu is a registered trademark of Canonical Ltd. Symantec and Veritas are trademarks or registered trademarks of Symantec Corporation or its affiliates in the U.S. and other countries. OpenSUSE, SUSE, and YAST are registered trademarks of SUSE LCC in the United States and other countries. Citrix, AppFlow, NetScaler, XenApp, and XenDesktop are trademarks of Citrix Systems, Inc. and/or one or more of its subsidiaries, and may be registered in the United States Patent and Trademark Office and in other countries. AlertSite and DéjàClick are either trademarks or registered trademarks of Boca Internet Technologies, Inc. Samsung, Galaxy S, and Galaxy Note are registered trademarks of Samsung Electronics America, Inc. and/or its related entities. MOTOROLA is a registered trademarks of Motorola Trademark Holdings, LLC. The Trademark BlackBerry Bold is owned by Research In Motion Limited and is registered in the United States and may be pending or registered in other countries. Quest is not endorsed, sponsored, affiliated with or otherwise authorized by Research In Motion Limited. Ixia and the Ixia four-petal logo are registered trademarks or trademarks of Ixia. Opera, Opera Mini, and the O logo are trademarks of Opera Software ASA. Tevron, the Tevron logo, and CitraTest are registered trademarks of Tevron, LLC. PostgreSQL is a registered trademark of the PostgreSQL Global Development Group. MariaDB is a trademark or registered trademark of MariaDB Corporation Ab in the European Union and United States of America and/or other countries. Vormetric is a registered trademark of Vormetric, Inc. Intel, Itanium, Pentium, and Xeon are trademarks of Intel Corporation in the U.S. and/or other countries. Debian is a registered trademark of Software in the Public Interest, Inc. OpenStack is a trademark of the OpenStack Foundation. Amazon Web Services, the "Powered by Amazon Web Services" logo, and "Amazon RDS" are trademarks of Amazon.com, Inc. or its affiliates in the United States and/or other countries. Infobright, Infobright Community Edition and Infobright Enterprise Edition are trademarks of Infobright Inc. POLYCOM®, RealPresence® Collaboration Server, and RMX® are registered trademarks of Polycom, Inc. All other trademarks and registered trademarks are property of

their respective owners.

### Legend

- **WARNING:** A WARNING icon indicates a potential for property damage, personal injury, or death.
  
- ! **CAUTION:** A CAUTION icon indicates potential damage to hardware or loss of data if instructions are not followed.
  
- i **IMPORTANT NOTE, NOTE, TIP, MOBILE, or VIDEO:** An information icon indicates supporting information.

Foglight Cost Director User and Administration Guide  
Updated - 2023  
Foglight Version - 6.3.0  
Software Version - 6.3.0

# Contents

<b>Understanding Foglight Cost Director</b> .....	<b>5</b>
About Foglight Cost Director .....	5
Installation Requirements .....	5
Getting Started .....	6
Enabling the Quest Pricing Cloud & Data Protection Portal Integration .....	6
Creating a default Price Plan .....	6
Recommended additional reading .....	9
<b>Using Foglight Cost Director</b> .....	<b>10</b>
On-Premises dashboard .....	10
On-Premises charts .....	11
Administration tab .....	11
<b>About Us</b> .....	<b>13</b>
Technical support resources .....	13

---

# Understanding Foglight Cost Director

- [About Foglight Cost Director](#)
- [Installation Requirements](#)
- [Getting Started](#)
- [Recommended additional reading](#)

## About Foglight Cost Director

Business are challenged with know which workloads to move to the cloud. Foglight® Cost Director alleviates this problem by allowing businesses to know the true costs associated with running your data center to help you truly understand the cost of new VMs, environment growth, planned changes, and whether or not Cloud is going to really save you money.

There are two versions for Foglight Cost Director. Some of the functions are not available on the Lite version.

## Installation Requirements

Foglight Cost Director comes installed on Foglight Evolve and can be installed on a Foglight Management Server.

Foglight Cost Director requires the following cartridges for data collection:

1 *Virtual-VMware-Lite-6.3.0.car*

**i** | **NOTE:** After installing the *Virtual-VMware-6.3.0.car* cartridge, existing vCenter agents (VC agents) must be updated using the Update Agent button in the *VMware Environment > Administration* tab.

2 *OptimizerAutomation-6.3.0.car*

3 *CommonAnalytics-6.3.0.car*

4 *Virtual-HyperV-Lite-6.3.0.car*

5 *Cost-Director-6.3.0.car*

6 *Cost-Director-Lite-6.3.0.car*

While Foglight Evolve comes with these cartridges pre-installed and enabled, a standalone Foglight release requires that these components be installed on the Foglight Management Server. The sequence of cartridge installation is important because of their dependencies. For more information about installing Foglight Cost Director, and for details about system requirements and version compatibility, see the *Foglight Cost Director Release Notes*.

# Getting Started

- [Enabling the Quest Pricing Cloud & Data Protection Portal Integration](#)
- [Creating a default Price Plan](#)

## Enabling the Quest Pricing Cloud & Data Protection Portal Integration

The Quest Pricing Cloud is a live DB of Infrastructure as a Service Offerings and their associated costs. Pricing data is collected daily from the leading public cloud and participating managed service providers (MSPs). You can select the *Enabling the Quest Pricing Cloud & Data Protection Portal Integration* checkbox, and then click **Start** to interface with Foglight Cost Director. Then you will be directed to the **Initialize Cost Director** dashboard. For more information, see [Creating a default Price Plan](#) on page 6.

## Creating a default Price Plan

When you start up Foglight Cost Director the first time, you will be directed to the **Initialize Cost Director** dialog box which walks you through the procedure of setting up the default Price Plan.

### To create the default Price Plan:

- 1 Log in to the Foglight browser interface and make sure the left navigation panel is open.
- 2 On the navigation panel, under *Homes*, click **Cost Director**.  
The **Cost Director** dashboard opens.
- 3 In the **Cost Director** dashboard, click **Activate**.  
The **Initialize Cost Director** dashboard opens.

Figure 1. Initialize Cost Director

The screenshot displays the 'Datacenter Costs' configuration page. On the left is a navigation sidebar with 'Datacenter Costs' selected, containing 'VM Ownership' and 'Costs Summary'. The main content area is titled 'Datacenter Costs' and includes an introductory paragraph: 'Datacenter costs vary, we need the basics to help expose what is driving your budget and to help provide guidance on where money may be saved. This step will create the default cost structures for all VMs. Additional cost structure templates can be created.' Below this, it says 'Set your local currency: JPY(¥)'. The page is divided into two columns: 'Compute Price Plan' and 'Storage Price Plan'. The 'Compute Price Plan' section includes: CPU Unit Cost per Month (322,826 ¥/GHz), Memory Unit Cost per Month (96,739 ¥/GB), License & Add-on Cost per VM (Electricity Cost per Year: 7065,217 ¥; Facility Cost per Year: 1614,13 ¥; Guest OS License Cost per Year: 0,0 ¥; Hypervisor Cost per Year: 5760,87 ¥), and a 'Reset to System Compute Price Plan' button. The 'Storage Price Plan' section includes: Storage Cost per Month (6,413 ¥/GB) and I/O Operation Cost per 100,000 (2,5 ¥), with a 'Reset to System Storage Price Plan' button. At the bottom right, there are navigation buttons: 'Previous', 'Next', 'Finish', and 'Cancel'.

4 **Datacenter Costs:** This step creates the default cost structures for all VMs, which includes the following parts:

- **Set your local currency:** Specify the cost currency by clicking the currency and a Currency Configuration dialog box will open. The supported currency includes USD, EUR, GBP, JPY, and CNY. Exchange Rate to USD can also be set on this page.
- **Compute Price Plan**
  - CPU Unit Cost per Month
  - Memory Unit Cost per Month
- **License & Add-on Cost per VM**
  - Electricity Cost per Year
  - Facility Cost per Year
  - Guest OS License Cost per Year
  - Hypervisor Cost per Year
  - **Reset to System Compute Price Plan** button
- **Storage Price Plan**
  - Storage Cost per Month
  - I/O Operation Cost per 100,000
  - **Reset to System Storage Price Plan** button

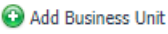
The following lists the formula of populating:

- $CPU\ Unit\ Cost\ per\ Month = (Total\ Servers\ Cost \times CPU\ Cost\ Weight\%) / (Server\ Lifecycle\ Year \times 12\ month) \times Active\ Server\ Count \times Server\ CPU\ Cores \times CPU\ Speed \times vCPU/Cores\ Ratio \times (1 - CPU\ Reservation\%)$
- $Memory\ Unit\ Cost\ per\ Month = (Total\ Servers\ Cost \times Memory\ Cost\ Weight\%) / (Server\ Lifecycle\ Year \times 12\ month) \times Active\ Server\ Count \times Server\ RAM \times (1 - RAM\ Reservation\%)$
- $Storage\ Cost\ per\ Month = (Total\ Storage\ Cost \times Space\ Cost\ Weight\%) / (Storage\ Lifecycle\ Year \times 12\ month) \times (Total\ Storage\ Space \times 1024)$
- $I/O\ Operation\ Cost\ per\ 100000 = 100000 \times (Total\ Storage\ Cost \times IO\ Cost\ Weight\%) / (IOPS\ Capacity \times Storage\ Lifecycle\ Year \times 365 \times 24 \times 3600)$

Taking numbers in the above figure for example, you can get the following values:

- $CPU\ Unit\ Cost\ per\ Month = 600 \times 0.3 / 6 \times 12 \times 3 \times 2 \times 5 \times 1 \times (1 - 50\%) = 0.167$
- $Memory\ Unit\ Cost\ per\ Month = 600 \times 0.7 / 6 \times 12 \times 3 \times 3 \times (1 - 50\%) = 1.296$
- $Storage\ Cost\ per\ Month = 6000000 \times 50\% / 6 \times 12 \times 500 \times 1024 = 0.081$
- $I/O\ Operation\ Cost\ per\ 100000 = 100000 \times 6000000 \times 50\% / 100000 \times 6 \times 365 \times 24 \times 3600 = 0.016$

5 **VM Ownership:**

- a Add Business Unit. Click the  button and an *Add new business unit* dialog box opens. Specify the required information.

**Add new business unit**

Name

Location Name

Longitude

Latitude

Description

- b Select the unallocated VMs from the left table, and then click **Move In** to assign the selected virtual machines to the specified Business Unit, as needed. Click **Next**.

Cost Director > Initialize Cost Director

▼ Datacenter Costs

▶ VM Ownership

○ Costs Summary

**VM Ownership**

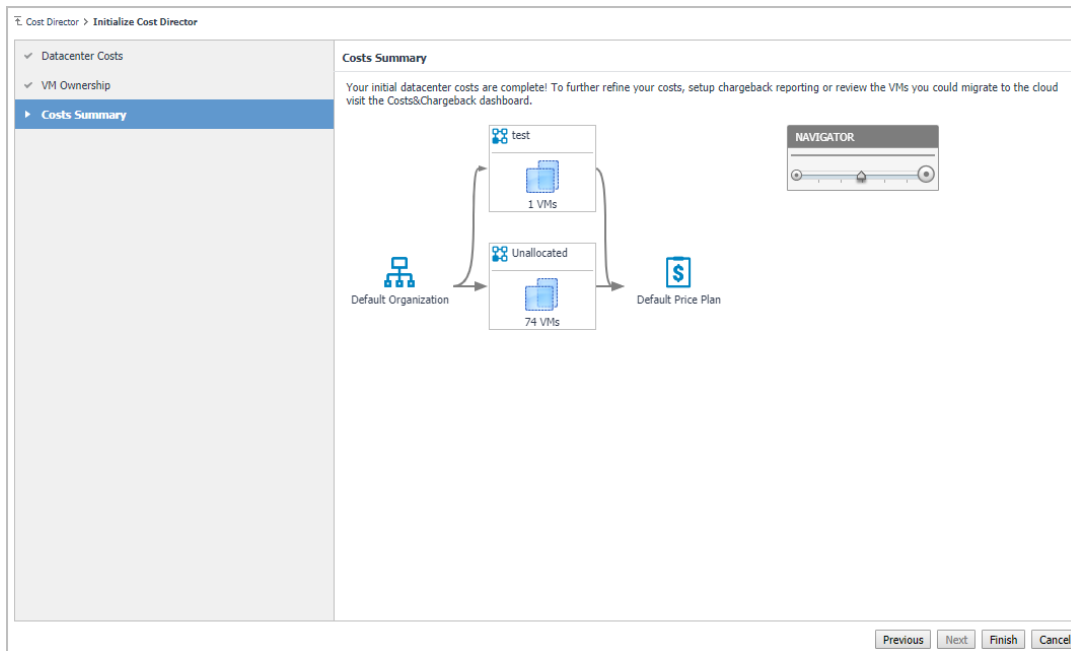
Showback, chargeback and cross-charge rely on virtual machines being correctly allocated to business units or similar organization groups such as application teams.

Search

- VMware
  - Hosts And Clusters
  - Datacenter
    - New Resource Pool
      - ACPI
      - ACPI
      - KVM
      - Pkg\_000\_VM with ACPI
      - Pkg\_000\_VM?\_4100-0400
      - replica-SP532a2e-7000-4225-810F-9
      - Netcol
      - Netcol
      - Netcol
      - S1010
      - S1010

- 6 *Costs Summary*: View the topology dependency on the *Costs Summary* view, and then click **Finish**.





- 7 The creation of the default Price Plan is completed, and then the *Cost Director > On-Premises* dashboard opens by default. Also you can view the detailed information about created *Organization*, *Business Unit*, *Default Price Plan*, and *Topology* dependency view through the *Cost Director > On-Premises > Administration* dashboard.

## Recommended additional reading

As tasks on the **Chargeback** dashboard, the **Cloud Cost** dashboard, and the **Container Cost** dashboard are commonly used throughout Foglight and Foglight Evolve products. Quest recommends that you read the following guides to understand both dashboards and the relevant tasks.

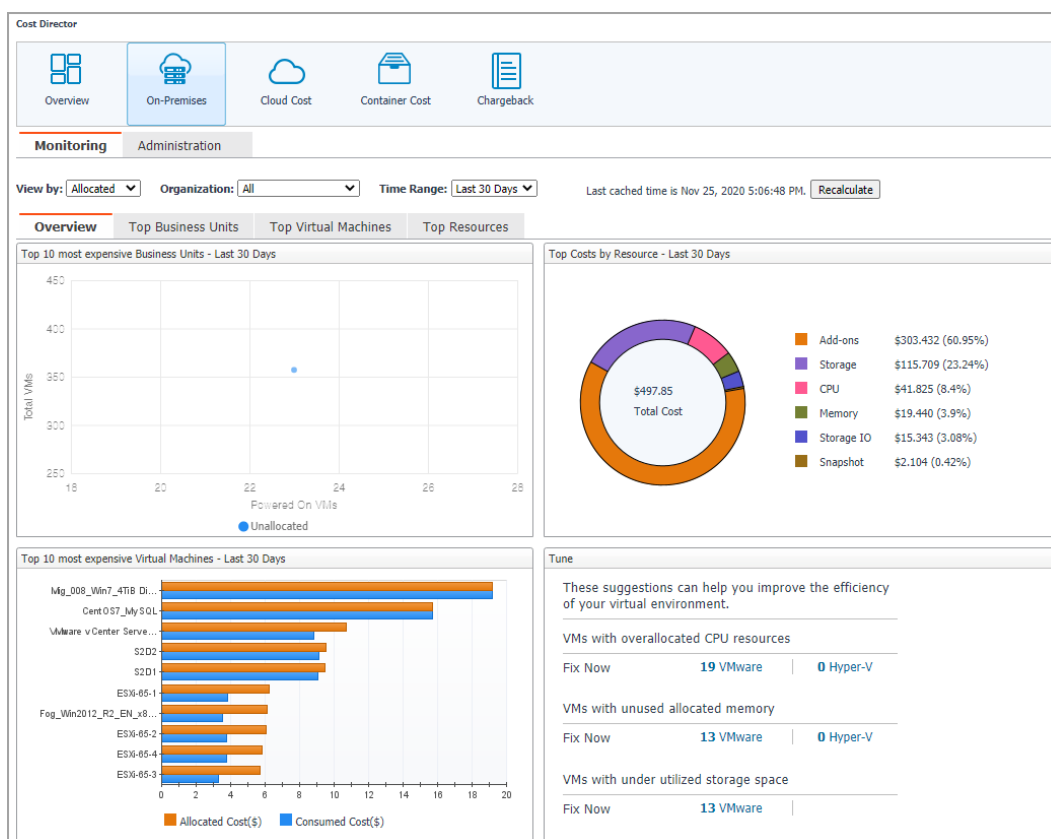
- Chapter *Reporting on Your Enterprise* in the *Foglight User Guide*.
- Chapter *Cost Tab* in the *Foglight Hybrid Cloud Manager for Azure User and Administration Guide*.
- Chapter *Cost* in the *Foglight for Container Management User and Administration Guide*.
- Chapter “*Bubble Chart User Guide*” and “*Scatter Chart User Guide*” in the *Web Component Reference*.

All data and metrics, which are presented and calculated by Foglight Cost Director, are from the Foglight for VMware cartridge. Quest also recommends that you read through the *Foglight for VMware User and Reference Guide & Foglight for VMware Installation Guide* to get a comprehensive understanding about the Foglight for VMware.

# Using Foglight Cost Director

## On-Premises dashboard

The *On-Premises* dashboard displays the statistic total cost of organizations, business units, and virtual machines in the last 7/30/90 days. Metrics and charts in this tab will be updated every day or you could click the **Recalculate** button to manually update all charts. To access this dashboard, under *Homes*, click **Cost Director**.



This dashboard consists of the following two tabs:

- Monitoring tab
  - Filters for showing resource costs, which includes the following three conditions:
    - *View by*: Calculate the resource costs based on Allocated costs or Consumed costs. *Allocated* is selected by default.
    - *Organization*: Lists all available organizations.
    - *Time Range*: Provides three time period of metrics calculation. *Last 30 Days* is selected by default.
  - The *On-Premises charts*, which appears on the On-Premises dashboard by default after you click **Cost Director > On-Premises**.

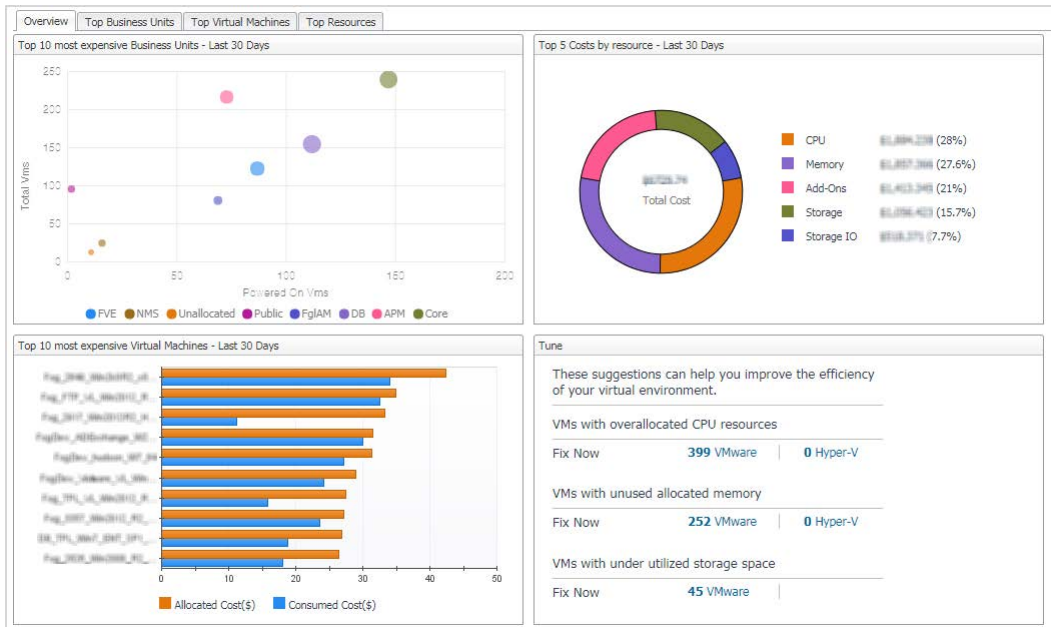
- Administration tab

## On-Premises charts

The **On-Premises** charts appear on the On-Premises dashboard by default after you click **Cost Director > On-Premises**, which includes the following four tabs:

- **NOTE:** The *Top Business Units*, *Top Virtual Machines*, and *Top Resources* tabs are not available on the Lite version.
- *Overview:* Shows *top 10 most expensive Business Units - Last N Days*, *Top 5 Costs by resource - Last N Days*, *Top 10 most expensive Virtual Machines - Last N Days*, and Tuning information.
- *Top Business Units:* Shows the detailed information of the Business Unit that allocates or consumes the most costs.
- *Top Virtual Machines:* Shows the detailed information of the Virtual Machines that allocates or consumes the most costs.
- *Top Resources:* Shows the detailed information of the Resource that allocates or consumes the most costs.







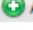

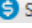



Figure 2. Summary - All Servers view



## Administration tab



The *Administration* dashboard appears after clicking **Cost Director > On-Premises > Administration**, which sets up and changes the configurations of:

- *Organizations:* Lists the available organizations and provides you with the options to add, delete, and edit the selected organizations.
- *Business Units:* Lists the available business units, provides you with the options to add, delete, and edit the selected business units, and allows you to assign an organization or price plan for the selected business unit.

- *Virtual Machines*: Lists the available virtual machines, provides you with the options to add, delete, and edit the selected business units, and allows you to assign a business unit or price plan for the selected virtual machine.
- *Compute Price Plans*: Lists the available price plans of compute resources and provides you with the options to  Add ,  Delete ,  Set Currency ,  Import ,  Export , and edit  the selected price plan.
- *Storage*: Lists VMware datastore items and assigns the existing storage plan for the selected range.
- *Storage Price Plans*: Lists the available price plans of storage and provides you with the options to  Add ,  Delete ,  Set Currency ,  Import ,  Export , and edit  the selected price plan.

**i** **NOTE:** In the *Add new price plan* and the *Edit Price Plan* dialog box, click the **Load System Compute Price Plan** button or the **Reset to Load System Compute Price Plan** button to load system default price plan.

**NOTE:** After setting the currency in the *Currency Configuration* dialog box, all the currency units displayed in the dashboard will be updated. You can also set Exchange Rate to USD on this page.

**NOTE:** Use the  Import and  Export button to import or export the price plans in .CSV files.

- *Topology*: The *Topology* tab visualizes the relationships between the objects in your environment through an interactive dependency map. The map illustrates how different components relate to each other, and the levels of the available resources available to them. The *Topology* tab provides a quick and easy way to view components grouped by organization.
- *VM Ownership*: The *VM Ownership* tab enables user to assign datacenters, clusters, resource pools, and vfolders to different Business Units.

Quest creates software solutions that make the benefits of new technology real in an increasingly complex IT landscape. From database and systems management, to Active Directory and Office 365 management, and cyber security resilience, Quest helps customers solve their next IT challenge now. Around the globe, more than 130,000 companies and 95% of the Fortune 500 count on Quest to deliver proactive management and monitoring for the next enterprise initiative, find the next solution for complex Microsoft challenges and stay ahead of the next threat. Quest Software. Where next meets now. For more information, visit <https://www.quest.com/>.

## Technical support resources

Technical support is available to Quest customers with a valid maintenance contract and customers who have trial versions. You can access the Quest Support Portal at <https://support.quest.com>.

The Support Portal provides self-help tools you can use to solve problems quickly and independently, 24 hours a day, 365 days a year. The Support Portal enables you to:

- Submit and manage a Service Request.
- View Knowledge Base articles.
- Sign up for product notifications.
- Download software and technical documentation.
- View how-to-videos.
- Engage in community discussions.
- Chat with support engineers online.
- View services to assist you with your product.