



erwin Evolve

Release Notes

© 2022 Quest Software Inc.

ALL RIGHTS RESERVED.

This guide contains proprietary information protected by copyright. The software described in this guide is furnished under a software license or nondisclosure agreement. This software may be used or copied only in accordance with the terms of the applicable agreement. No part of this guide may be reproduced or transmitted in any form or by any means, electronic or mechanical, including photocopying and recording for any purpose other than the purchaser's personal use without the written permission of Quest Software Inc.

The information in this document is provided in connection with Quest Software products. No license, express or implied, by estoppel or otherwise, to any intellectual property right is granted by this document or in connection with the sale of Quest Software products. EXCEPT AS SET FORTH IN THE TERMS AND CONDITIONS AS SPECIFIED IN THE LICENSE AGREEMENT FOR THIS PRODUCT, QUEST SOFTWARE ASSUMES NO LIABILITY WHATSOEVER AND DISCLAIMS ANY EXPRESS, IMPLIED OR STATUTORY WARRANTY RELATING TO ITS PRODUCTS INCLUDING, BUT NOT LIMITED TO, THE IMPLIED WARRANTY OF MERCHANTABILITY, FITNESS FOR A PARTICULAR PURPOSE, OR NON-INFRINGEMENT. IN NO EVENT SHALL QUEST SOFTWARE BE LIABLE FOR ANY DIRECT, INDIRECT, CONSEQUENTIAL, PUNITIVE, SPECIAL, OR INCIDENTAL DAMAGES (INCLUDING, WITHOUT LIMITATION, DAMAGES FOR LOSS OF PROFITS, BUSINESS INTERRUPTION OR LOSS OF INFORMATION) ARISING OUT OF THE USE OR INABILITY TO USE THIS DOCUMENT, EVEN IF QUEST SOFTWARE HAS BEEN ADVISED OF THE POSSIBILITY OF SUCH DAMAGES. Quest Software makes no representations or warranties with respect to the accuracy or completeness of the contents of this document and reserves the right to make changes to specifications and product descriptions at any time without notice. Quest Software does not make any commitment to update the information contained in this document.

If you have any questions regarding your potential use of this material, contact:

Quest Software Inc.

Attn: LEGAL Dept

4 Polaris Way

Aliso Viejo, CA 92656

Refer to our Web site (<https://www.quest.com>) for regional and international office information.

Patents

Quest Software is proud of our advanced technology. Patents and pending patents may apply to this product. For the most current information about applicable patents for this product, please visit our website at <https://www.quest.com/legal>.

Trademarks

Quest, the Quest logo, and Join the Innovation are trademarks and registered trademarks of Quest Software Inc. For a complete list of Quest marks, visit <https://www.quest.com/legal/trademark-information.aspx>. All other trademarks and registered trademarks are property of their respective owners.

erwin Evolve – Release Notes
Updated – October 2022
Version – 2022.0.0

What's New in erwin Evolve 2022.0.0

erwin Evolve 2022.0.0 is the latest release of the erwin Evolve Suite and erwin Evolve Web Platform.

Major Release 2022.0.0

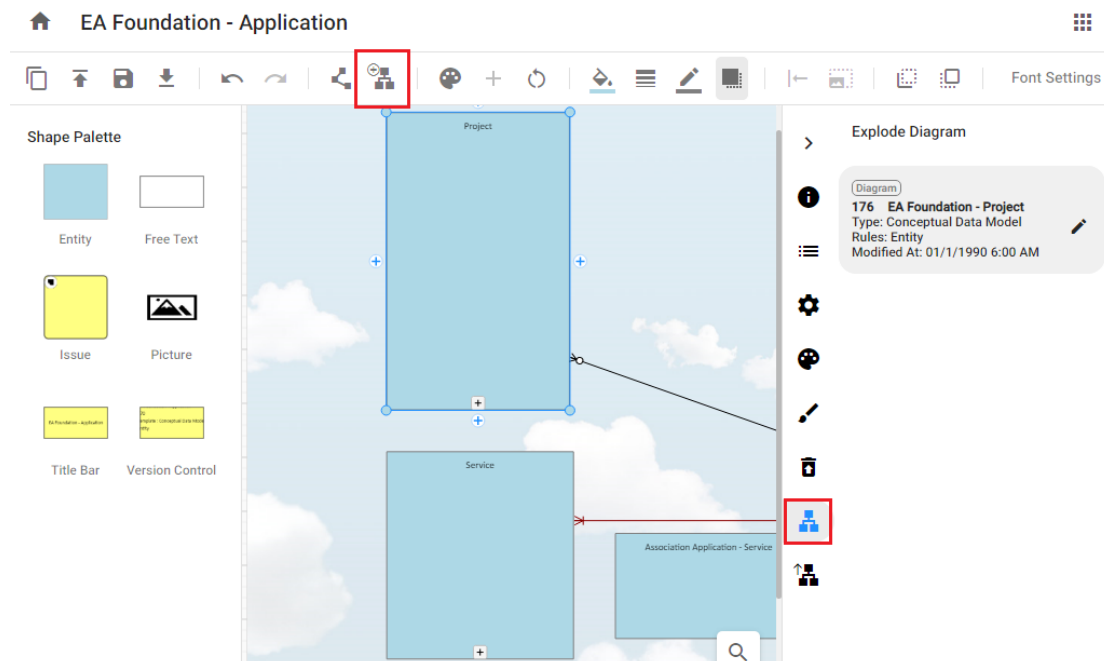
This release brings new key features including:

- A full exploded diagram capability in erwin Web Modeler
- The ability to set the parent object for diagrams in erwin Evolve Web Platform and erwin Web Modeler
- Improvements to Evolve Designer's startup performance
- Full support for load balancing with erwin Web Modeler
- Full global search re-indexing using the Validate Repository tool (now much quicker to fully reindex)
- Separate Workflow menu with lots of features
- And many more minor tweaks and fixes

Full Exploded Diagram Capabilities in erwin Web Modeler

erwin Evolve Suite has always offered the ability to create parent and child diagrams in the desktop Modeler tool. We now bring this capability to draft diagrams in erwin Evolve Web Platform. With this feature, you can:

- Create exploded diagrams quickly and easily right inside the erwin Web Modeler
- Change a diagram's parent without leaving erwin Evolve Web Platform
- Edit a set of exploded diagrams without publishing, and publish the set when you are ready, or publish them as you go along
- View the lineage of your diagrams in the new right-side panels



Setting Parent Object inside erwin Evolve Web Platform

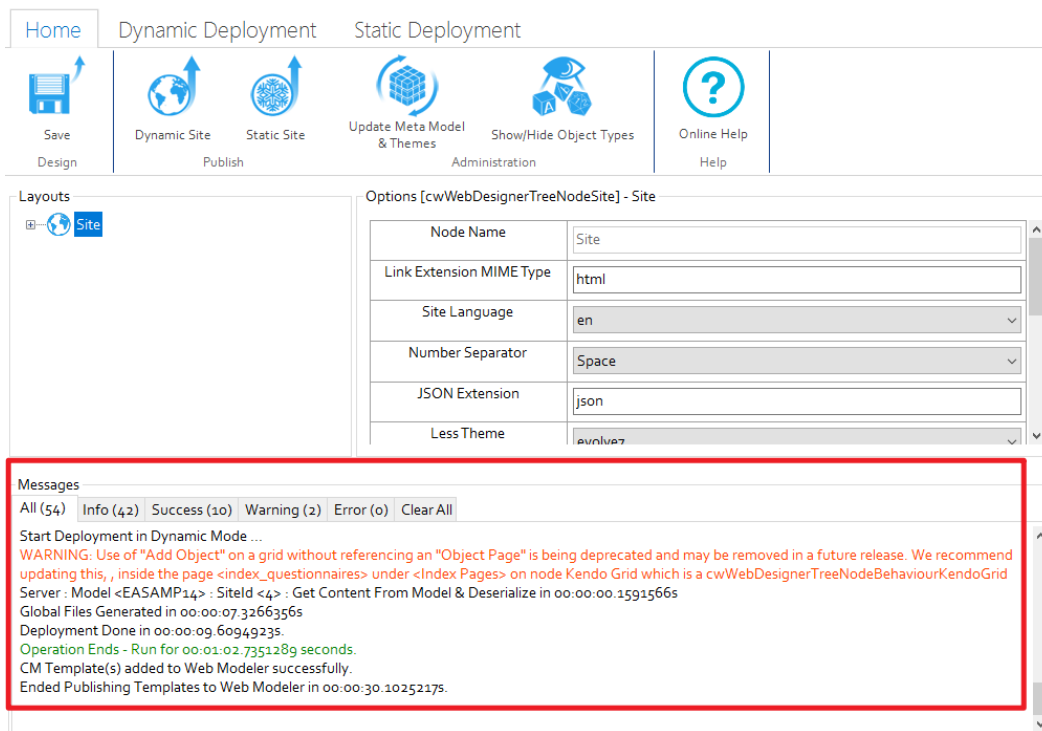
More features from the desktop tool are extended to the erwin Evolve Web Platform. The Parent object and Parent object name fields are no longer just shown as read only fields. They are now fully editable.

| General | |
|--------------------|---|
| Name* | Parent Object in Evolve 1 |
| Rule | Generic |
| Category | Application - Architecture |
| Parent object | Application |
| Parent object name | SysCom |
| Owner | Administrator |
| Validated | <input type="radio"/> True <input checked="" type="radio"/> False |
| Created by | Administrator |
| Creation Date | July 19, 2022 |
| Updated by | Administrator |
| Update Date | July 21, 2022 |

Evolve Designer Improvements

With the improvements to Evolve Designer:

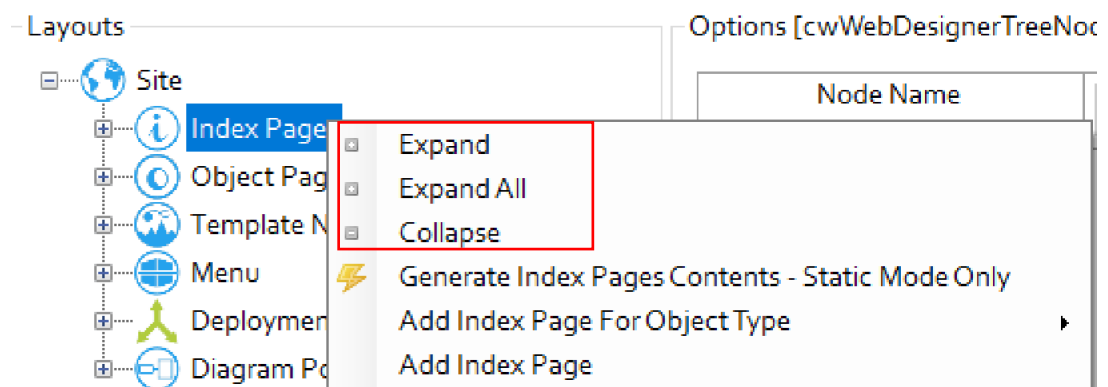
- Sites load much faster, so you can get working on those new pages, and changes much more quickly. No need to reach for a coffee as your mega-site opens!
- You can find your publishing issues much quicker using the new tabbed log window. Also, filter by the type of log message and clear the content when you want.



i Message categories use the following color code:

- Info: Black
- Success: Green
- Warning: Orange
- Error: Red

- You can easily expand and collapse nodes in your site, using the new right-click menu options, which are standardized for all nodes.



Load Balancing with erwin Web Modeler


Previously, if you wanted to use the erwin Web Modeler you were restricted to a single server installation. We have now extended the configuration to allow for multi-server (or load balanced) environments.

Global Search Re-indexing in Validate Repository Tool

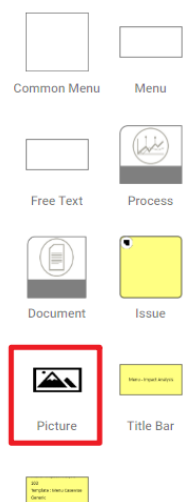
This release brings significant enhancements to Global search re-indexing. It is now possible to force a complete re-index using the Validate Repository tool. This is significantly more efficient than using the crawling indexer. This requires erwin Evolve Suite and erwin Evolve Web Platform to be co-installed on the same server.

Gallery Manager in erwin Web Modeler

erwin Web Modeler now enables you to upload and use pictures in Draft diagrams. The images that are used are also added to the model's gallery, [making](#) them available in the desktop tool as well. The Shape Palette now

includes the Picture icon template  .

Shape Palette



Workflow Enhancements

In this release, erwin Evolve Web Platform provides you an ability to create new requests with all necessary information and supporting documents as an attachment. Also, you can now do multiple reviews and can send the feedback or resubmit the application to the creator. *(NB: Additional license required).*

Workflow Configuration

- Workflow configuration is now a part of Administration, alongside Pool/Swimlane Configuration and it enables you to create and customize workflows.



You must have Administrator rights to create or configure workflows.

Save, Publish, and Refresh Configuration

- Save, Publish, and Refresh workflow configuration eliminates manual copying and pasting the configuration JSON code and publishing website.

| Button | Description |
|---------|---|
| Save | Saves JSON configuration into erwin Evolve Web Platform |
| Publish | Publishes the workflow to the server |

| | |
|---------|--|
| Refresh | Discards the workflow's saved changes and reloads it from the server |
|---------|--|

Add, View, and Delete Attachment Files

Starting this release, erwin Evolve Web platform provides a way to attach multiple files (up to 20 MB in size) of any file type while requesting an application review. Also, Reviewers can now only download and view the attached files and cannot delete it.

Pre-set Object Page Available for Workflow Items

The "CWWorkflowItem" object page has been added to cw-builtin.json. Thus, making it available in the built-in site. This object page enables reviewers to approve or reject Advanced workflow requests.



If you are an existing Advanced Workflow users, the CWWorkflowItem object exists already for you and is default for all models. For the new feature to work as expected, you must remove the CWWorkflowItem object.

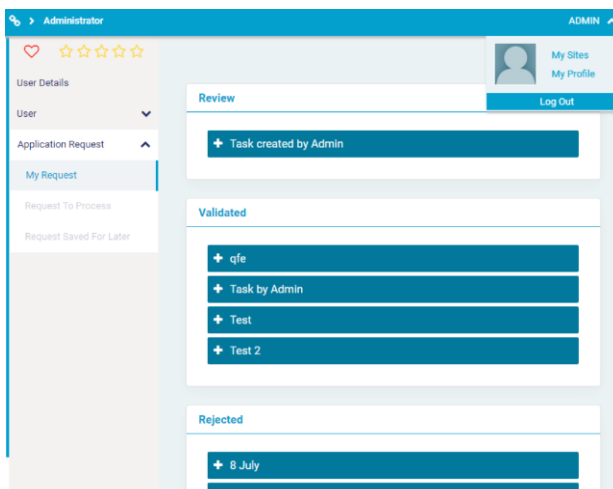
UI label Enhancements

Several enhancements have been implemented to improve the workflow tasks and usage experience. The enhancements are as follows:

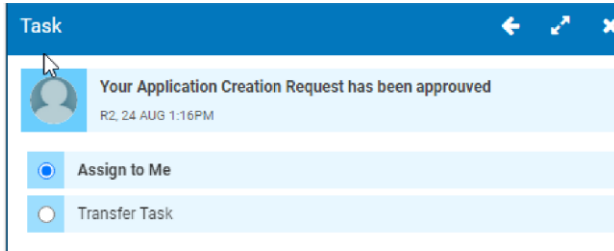
| Old | New |
|--------------------------------------|---------------|
| To Do | My Tasks |
| Requested | My Requests |
| Action this task myself | Assign to Me |
| Delegate this action to another user | Transfer Task |
| Review Now | Take Action |

View the Approval Request and the Status of the Workflow Approval Request

- You can view the status of approval requests under ADMIN > My Profile > Application Request > Request. (Additional configuration required.)



- You can assign the task to yourself or transfer it to someone else.



List of enhancement and fixes

| 2022.0.0 Patch Release (388/519) | |
|----------------------------------|---|
| BUG | [9865378] [CoffeeMaker] – Fixed an issue with the Administration menu not closing |
| BUG | [9865377] [CoffeeMaker] - Fixes to support CoffeeMaker plugins. Removed unused doActions custom event handlers and improved the JSON handling of configuration data |
| BUG | [9865390] [Evolve Modeler] Fixed Object Explorer context menu issues on column headers |
| BUG | [9865240] [Evolve Modeler] Icons for Templates in Modeler Home Page are not loading until Refresh |
| BUG | [9865373] [SAML2] Fixed an issue where SAML2 libraries were not loading |
| 2022.0.0 Major Release (386/518) | |
| RFA / Issue | Description |
| BUG | [9862439] [Evolve Designer] Disabled combo box value change on mouse scroll |
| BUG | [9861881] SR Number:5043038 - Unable to choose another name for the evolve site, as web modeler stops working |
| BUG | [9861847] Global Search Validate Repository should exclude all the unnecessary Tables/object types |
| BUG | [9864815] [Evolve Designer] Console in Evolve Designer is editable |
| BUG | [9861164] [Validate Repository] Validate Repository – model name no longer case sensitive |

| | |
|-------------|---|
| Enhancement | [9854642] Change the default Global Search settings to 'No filters' |
| Enhancement | [9860890] Add page number field in draft manager pagination |
| BUG | [9864816] [Global Search] - 'No Description' message should display if there is no description and Proper format should display in Search Results page |
| Enhancement | [9860748] [Evolve] - add redirection button to redirect to draft manager page |
| BUG | [9860896] [Web Modeler] Sorting by name issue when user toggles between 'Name' and 'Title' |
| BUG | [9862530] [Validate Repo] - An exception is thrown after running Applyfixes command |
| BUG | [9865192] [Advanced Workflow] - Fixed the notification message issue for Reviewers |
| BUG | [9864981] [Webmodeler] Multiple users in a diagram breaks if the [+] button is used |
| BUG | [9862749] [Webmodeler] Fixed issues with Active Directory authentication |
| Enhancement | [Webmodeler] Gallery manager now supported |
| BUG | [9865031] [Evolve] Fixed issue where "Requested object() do not exists in the object type [CW Site]" - error after clicking on 'Dynamic Site' for new model |
| BUG | [9865092] [Web Modeler] - Existing free text not maintained on publishing |
| Enhancement | [Webmodeler] Now supports load balancing |
| Enhancement | [Webmodeler / Evolve] Now able to set the parent object for a diagram |
| Enhancement | [VR] Now able to fully recreate indexes more quickly, without scanning full audit history |
| BUG | [9865021] [Web Modeler] - Draft won't get published after changing border settings or font settings |
| Enhancement | [Webmodeler] Now able to build hierarchies of diagrams as drafts |

Product Licensing

As of the 2020.1.1 release of erwin Evolve Suite / Web Platform, licensing is migrating to the standard Quest Inc. license system. During the migration, there will be a grace period, whereby existing customers can continue to use their existing Casewise licenses. Quest do not intend to force customers onto the new licensing and will work with them to ensure a successful migration.



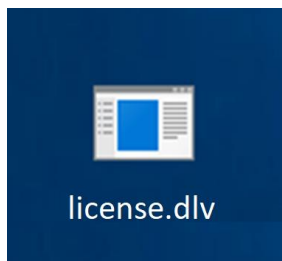
If you are considering upgrading to 2022, you should not be concerned with the new licensing system, as its usage is optional now.

Activating your Quest License

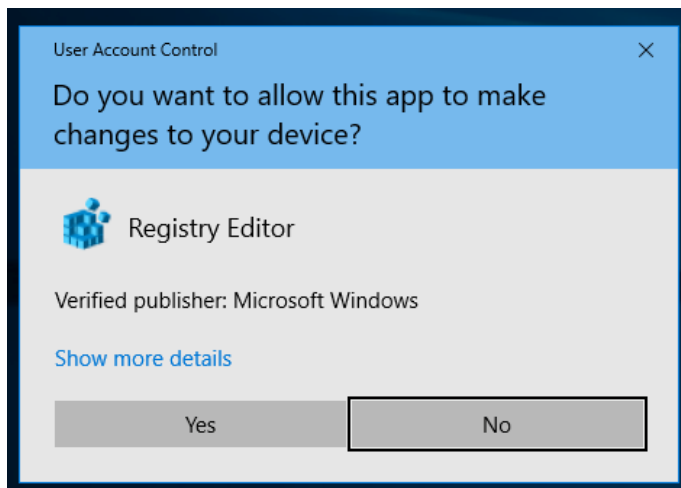
The process for activating an erwin Evolve license is:

1. Support will provide you with one or more license files per Server machine that requires licensing.

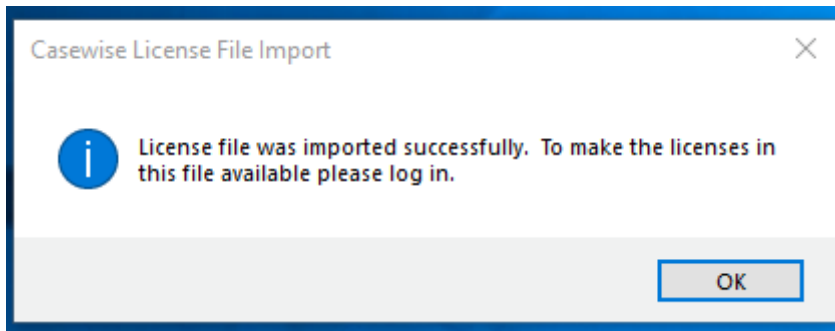
For example:



2. Having installed the software, copy this file to your server's desktop.
3. Double click on the file. You will be presented with a warning:

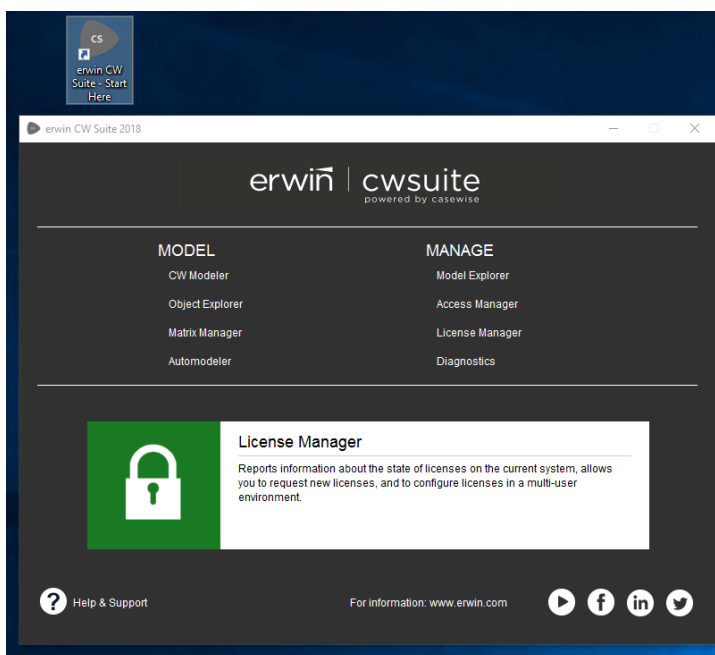


4. Click **Yes** to allow the tool to change the registry.



5. The software now has the purchased licenses activated on the server. To verify this, load the License Manager.

Open erwin Evolve suite - Start Here.



6. Click **License Manager**, and login.

7. License Manager will show the license code, and various other attributes.

| License Name | Product | Version | Type | License ID | Expiry Date |
|---|---------------------------|----------|--------|----------------------------------|----------------|
| Multi-User database | erwin Evolve Suite | CM2009.1 | Client | C1rm4qsmqdg22rm4qsm3rm4qsm4rade2 | Does not expir |
| erwin Evolve Suite | erwin Evolve Suite | CM2009.1 | Client | C1rm4qsmqdg22rm4qsm3rm4qsm4rade2 | Does not expir |
| Evolve Web Platform Server | erwin Evolve Web Platform | CM2009.1 | Client | C1rm4qsmqdg22rm4qsm3rm4qsm4rade2 | Does not expir |
| Evolve Web Platform Contributors (1) | erwin Evolve Web Platform | CM2009.1 | Client | C1rm4qsmqdg22rm4qsm3rm4qsm4rade2 | Does not expir |
| Evolve Web Platform Contributors (1) | erwin Evolve Web Platform | CM2009.1 | Client | C1rm4qsmqdg22rm4qsm3rm4qsm4rade2 | Does not expir |
| Evolve Web Platform Offline Generation | erwin Evolve Web Platform | CM2009.1 | Client | C1rm4qsmqdg22rm4qsm3rm4qsm4rade2 | Does not expir |
| Evolve Web Platform | erwin Evolve Web Platform | CM2009.1 | Client | C1rm4qsmqdg22rm4qsm3rm4qsm4rade2 | Does not expir |
| Auto Diagram Designer | erwin Evolve Web Platform | CM2009.1 | Client | C1rm4qsmqdg22rm4qsm3rm4qsm4rade2 | Does not expir |
| Evolve Web Platform Social Follower (Unlimited Users) | erwin Evolve Web Platform | CM2009.1 | Client | C1rm4qsmqdg22rm4qsm3rm4qsm4rade2 | Does not expir |

Returning your erwin License

If you need to move the license from one server to another, you must contact support, who will assist with the migration.

About Us

Quest creates software solutions that make the benefits of modern technology real in an increasingly complex IT landscape. From database and systems management to Active Directory and Office 365 management, and cyber security resilience, Quest helps customers solve their next IT challenge now. Around the globe, more than 130,000 companies and 95% of the Fortune 500 count on Quest to deliver proactive management and monitoring for the next enterprise initiative, find the next solution for complex Microsoft challenges and stay ahead of the next threat. Quest Software. Where next meets now. For more information, visit www.quest.com.

Technical support resources

Technical support is available to Quest customers with a valid maintenance contract and customers who have trial versions. You can access the Quest Support Portal at <https://support.quest.com>.

The Support Portal provides self-help tools you can use to solve problems quickly and independently, 24 hours a day, 365 days (about 12 months) a year. The Support Portal enables you to:

- Submit and manage a Service Request
- View Knowledge Base articles
- Sign up for product notifications
- Download software and technical documentation
- View how-to-videos
- Engage in community discussions
- Chat with support engineers online
- View services to help you with your product.