

Metalogix® StoragePoint 6.1.1

## Atmos Adapter Guide



© 2022 Quest Software Inc. ALL RIGHTS RESERVED.

This guide contains proprietary information protected by copyright. The software described in this guide is furnished under a software license or nondisclosure agreement. This software may be used or copied only in accordance with the terms of the applicable agreement. No part of this guide may be reproduced or transmitted in any form or by any means, electronic or mechanical, including photocopying and recording for any purpose other than the purchaser's personal use without the written permission of Quest Software Inc.

The information in this document is provided in connection with Quest Software products. No license, express or implied, by estoppel or otherwise, to any intellectual property right is granted by this document or in connection with the sale of Quest Software products. EXCEPT AS SET FORTH IN THE TERMS AND CONDITIONS AS SPECIFIED IN THE LICENSE AGREEMENT FOR THIS PRODUCT, QUEST SOFTWARE ASSUMES NO LIABILITY WHATSOEVER AND DISCLAIMS ANY EXPRESS, IMPLIED OR STATUTORY WARRANTY RELATING TO ITS PRODUCTS INCLUDING, BUT NOT LIMITED TO, THE IMPLIED WARRANTY OF MERCHANTABILITY, FITNESS FOR A PARTICULAR PURPOSE, OR NON-INFRINGEMENT. IN NO EVENT SHALL QUEST SOFTWARE BE LIABLE FOR ANY DIRECT, INDIRECT, CONSEQUENTIAL, PUNITIVE, SPECIAL OR INCIDENTAL DAMAGES (INCLUDING, WITHOUT LIMITATION, DAMAGES FOR LOSS OF PROFITS, BUSINESS INTERRUPTION OR LOSS OF INFORMATION) ARISING OUT OF THE USE OR INABILITY TO USE THIS DOCUMENT, EVEN IF QUEST SOFTWARE HAS BEEN ADVISED OF THE POSSIBILITY OF SUCH DAMAGES. Quest Software makes no representations or warranties with respect to the accuracy or completeness of the contents of this document and reserves the right to make changes to specifications and product descriptions at any time without notice. Quest Software does not make any commitment to update the information contained in this document.

If you have any questions regarding your potential use of this material, contact:

Quest Software Inc.  
Attn: LEGAL Dept.  
4 Polaris Way  
Aliso Viejo, CA 92656

Refer to our Web site (<https://www.quest.com>) for regional and international office information.

#### Patents

Quest Software is proud of our advanced technology. Patents and pending patents may apply to this product. For the most current information about applicable patents for this product, please visit our website at <https://www.quest.com/legal>.

#### Trademarks

Quest, the Quest logo, and Metalogix are trademarks and registered trademarks of Quest Software Inc. and its affiliates. For a complete list of Quest marks, visit <https://www.quest.com/legal/trademark-information.aspx>. All other trademarks and registered trademarks are property of their respective owners.

#### Legend

 **CAUTION:** A caution icon indicates potential damage to hardware or loss of data if instructions are not followed.

 **IMPORTANT, NOTE, TIP, MOBILE OR VIDEO:** An information icon indicates supporting information.

Metalogix® StoragePoint  
Updated August 2022  
Version 6.1.1

# Contents

<b>Atmos Adapter Configuration</b> .....	<b>4</b>
Atmos Adapter Connection String Parameters .....	5
Example Storage Endpoint using Atmos Adapter .....	9
Appendix: Using SSL with EMC Atmos .....	10
Appendix: Atmos adapter support for TLS 1.1 .....	14
<b>About Us</b> .....	<b>17</b>
Contacting Quest .....	17
Technical Support Resources .....	17

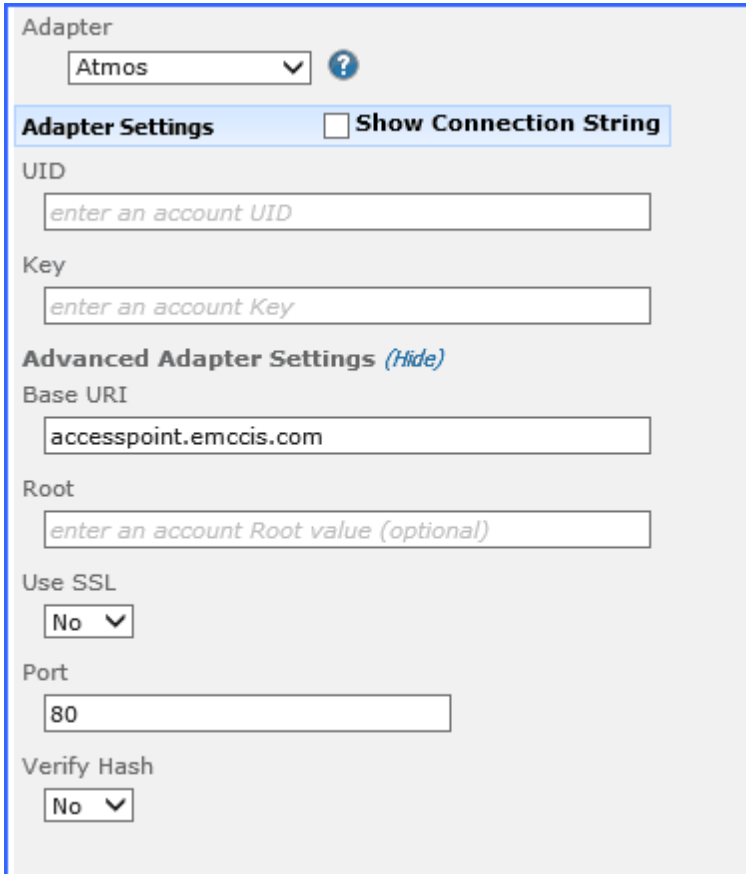
# Atmos Adapter Configuration

This section will provide you details on how to configure a storage endpoint's connection string to utilize the Atmos Adapter. Please refer to the StoragePoint Reference Guide for information on managing Storage Endpoints.

On the Application Management page, click *Storage and Backup Endpoints*.

Click *Create New Endpoint* or click the name of an existing storage endpoint that you want to edit.

Click the *Show* link next to the Advanced Adapter Settings to see the additional fields.



The screenshot shows a configuration form for the Atmos Adapter. At the top, there is a dropdown menu for the Adapter type, currently set to 'Atmos', with a help icon to its right. Below this is a section titled 'Adapter Settings' with a checkbox for 'Show Connection String'. The form contains several input fields: 'UID' with a placeholder 'enter an account UID', 'Key' with a placeholder 'enter an account Key', 'Base URI' with the value 'accesspoint.emccis.com', and 'Root' with a placeholder 'enter an account Root value (optional)'. There are also two dropdown menus for 'Use SSL' and 'Verify Hash', both currently set to 'No'. A 'Port' field contains the value '80'. A link for 'Advanced Adapter Settings (Hide)' is located between the 'Key' and 'Base URI' fields.

# Atmos Adapter Connection String Parameters

Setting Value/Options
<p>Name</p> <p>Enter the unique name of the Storage or Backup Endpoint.</p>
<p>Type</p> <p>Type</p> <p><input checked="" type="radio"/> Primary <input type="radio"/> Backup</p> <p><i>Primary</i>– this endpoint will be available for externalization when creating storage profiles.</p> <p><i>Backup</i>– this endpoint will be in the Backup Services dropdown on the profile page.</p> <p>The selection is locked down when saving.</p> <p>See Backup Services Settings in the Reference Guide for more information on how Backup Endpoints are used.</p>
<p>Status</p> <p>Status</p> <p>Online</p> <p><i>Online</i>– Storage Endpoint should be available to associate to a Storage Profile and accept BLOBs. (default)</p> <p><i>Offline (Read Only)</i>– A storage endpoint can be configured, but not made available for externalizing content. The BLOBs already on the endpoint are still read only.</p>
<p>Adapter</p> <p>Atmos</p> <p>Select the adapter for the endpoint that is being created.</p>
<p>UID</p> <p>The username to use when connecting to the server. This is equivalent to the Token ID provided with your Atmos online account.</p>

## Setting Value/Options

Key

The base64 encoded shared secret to use when signing requests to the server.

### Advanced Adapter Settings *(Hide)*

Base URI

IP address or host name that represents the Atmos instance or specific node to be used. Default = accesspoint.emccis.com.

Root

The starting folder/container within your Atmos namespace under which all folders and files will be created.

Use SSL

*(yes/no)* Determines whether or not the adapter negotiates an SSL connection for all data (and metadata) transfers. See Appendix A for details on adding a trust relationship. Default = No.

Port

The port on the server to communicate with. Default = 80 (443 if UseSSL is Yes).

Verify Hash

*(yes/no)* Includes a check-sum operation after each blob transfer. Allows the adapter to detect and log data integrity errors immediately. Default = No.

Is WORM Device

If the endpoint is on a WORM (Write Once, Read Many) device, Unused BLOB Cleanup will ignore this endpoint.

## Setting Value/Options

### Folder Content in BLOB Store

Yes ▾

### Folder Scheme

YYYY/MM/DD/HH/MM ▾

*No*– Externalized content BLOBs are not placed in folders (default).

*Yes*– Externalized content BLOBs are placed in folders.

If *Folder Content in BLOB Store* is *Yes* then you can select a date/time folder scheme from the dropdown.

YYYY/MM/DD/HH/MM is the default.

Test Storage Settings

The Test Storage Settings button can be used at this point, or after completing the endpoint configuration, to verify that the endpoint is accessible. For some adapters, testing the connection will create the folder if it doesn't already exist.

### Compress Content in BLOB Store

No ▾

*Content is compressed using the GZip/Deflate method.*

*No*– Externalized content BLOBs are not compressed (default).

*Yes*– Externalized content BLOBs are compressed.

### Encryption Method for Content in BLOB Store

None ▾

*None*– Encryption will not be applied to externalized BLOBs (default).

*AES (128 bit)*– 128 bit AES encryption will be applied to externalized BLOBs.

*AES (256 bit)*– 256 bit AES encryption will be applied to externalized BLOBs.

### Encryption Key Passphrase

Generate Key

*Enter a passphrase to be used to generate a key or leave blank to generate a random key. The passphrase entered is **not** saved with the Endpoint.*

Enter a passphrase to use when generating the encryption key. Using a passphrase will help you re-create the encryption key if necessary. You can generate a random key by leaving the box blank and clicking the *Generate Key* button. The encryption key passphrase will be hidden.

## Setting Value/Options

Generate warning notification if:

- or more successive errors are encountered
- there is less than   MB  % of free space

A warning email can be sent if it encounters errors.

Automatically take endpoint offline if:

- or more successive errors are encountered
- there is less than   MB  % of free space

An online storage endpoint can be automatically taken offline if it encounters errors. If a storage endpoint is taken offline automatically, BLOBs that were intended to be written to that endpoint will go to the content database.

Send Offline Notifications to:

- Use Notification Defaults

Additional Contacts

admin@company.com

*Provide a semi-colon delimited list of e-mail addresses.*

Default email addresses for system error and offline notification can be entered. Check the box to include the list of Default Notification Contacts specified on the General Settings page.



# Example Storage Endpoint using Atmos Adapter

**Storage Settings**  
Provide general storage settings in this section

Adapter: Atmos

**Adapter Settings**  Show Connection String

UID: 8cf3acc45fa44c4a91863bcf529eb382BLUETSE1897E

Key: dnF1/X8ykw1aumcymjtWUWjwUyk

**Advanced Adapter Settings (hide)**

Base URI: accesspoint.emccis.com

Root:

Use SSL: No

Port: 80

Verify Hash: No

Click the *Show Connection String* checkbox to edit the connection string. Otherwise, fill in the connection fields shown for the adapter selected. Notice that the connection string parameters are name/value pairs separated by semi-colons when editing using the Show Connection String option.

**Storage Settings**  
Provide general storage settings in this section

Adapter: Atmos

**Adapter Settings**  Show Connection String

Connection: UID=8cf3acc45fa44c4a91863bcf529eb382BLUETSE1897Bf36E5F70;KEY=dnF1/X8ykw1aumcymjtWUWjwUyk;BASEURI=accesspoint.emccis.com;PORT=80;ROOT=;USESSL=False;VERIFYHASH=False;

*Provide adapter-specific connection attributes. Please refer to the adapter documentation for connection string details.*

**i** | **NOTE:** Adapter parameters are not case-sensitive.

**i** | **NOTE:** You should always use a passphrase when generating encryption keys. The passphrase gives you a means of re-creating keys should they become unrecoverable or corrupt. It is very important to remember or record the passphrase outside of Metalogix StoragePoint. Otherwise, encrypted content could become irretrievable in the event of a database failure.

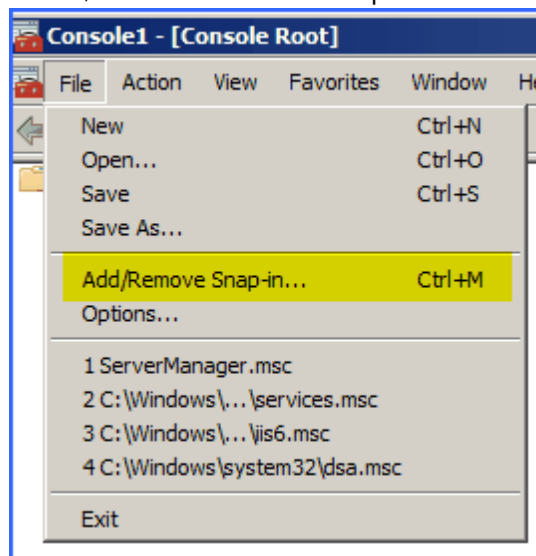
If you choose to externalize content you should test the storage profile settings by clicking the *Test Storage Settings* button. A message under the button will indicate whether or not the test was successful. If the test fails the message will include the error that was the root cause of the failure.

**i** | **NOTE:** When testing access to an endpoint from within Central Administration, the Identity of the Application Pool hosting the Central Administration Site is the one that is being used for the test. If there are different Identities used for other Web Applications in the Farm then those identities will also need access but cannot be tested from within Central Admin itself. See BLOB Store Security and Metalogix StoragePoint Required Privileges in the Metalogix StoragePoint Reference Guide.

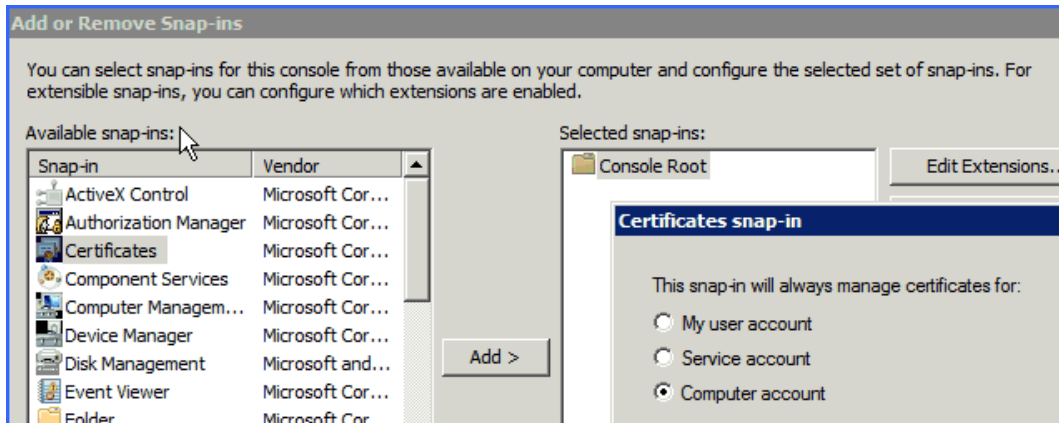
## Appendix: Using SSL with EMC Atmos

In order for the StoragePoint EMC Atmos adapter to use SSL to communicate with Atmos, the Atmos instance's certificate must be added to the SharePoint certificate store. The following steps describe how to do this:

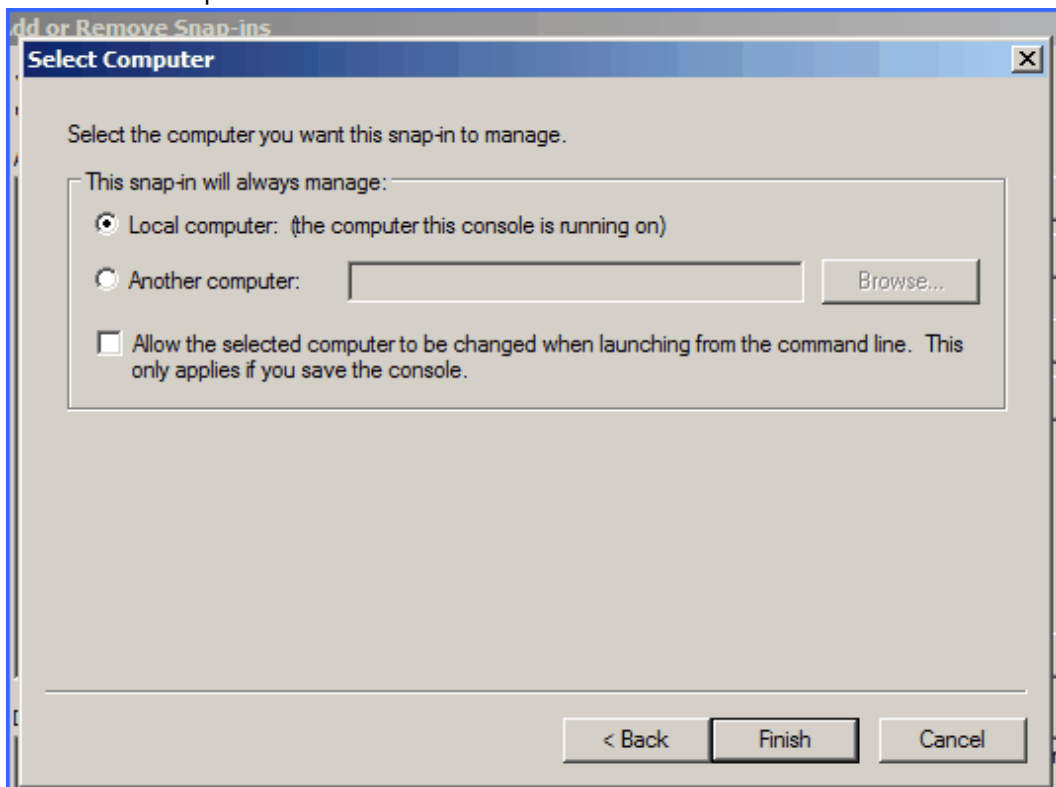
1. Click Start->Run. Enter 'mmc.exe' and press Enter.
2. On the File menu, click Add/Remove Snap-In.



3. Click Certificates on the left, then click Add. A new window opens; select Computer Account and click Next.

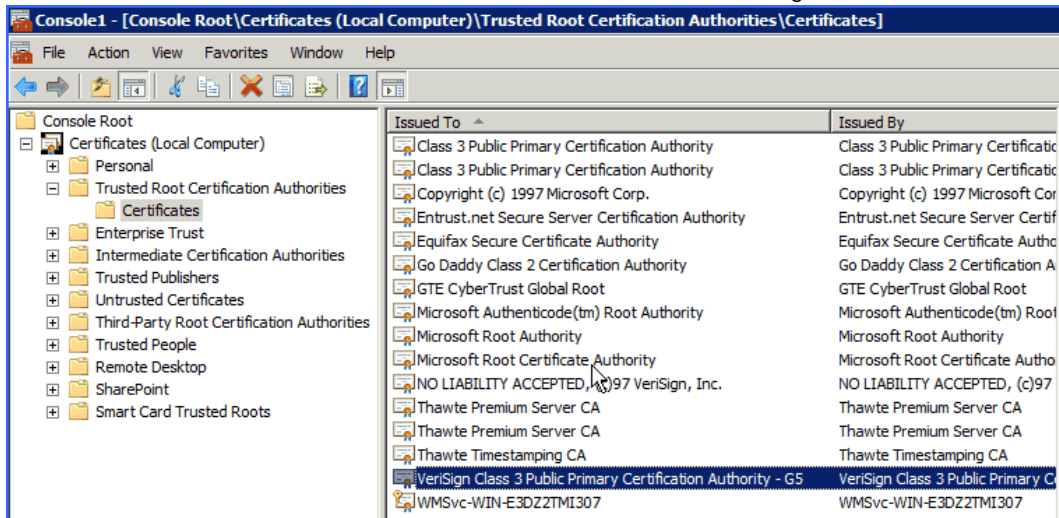


4. Select Local Computer and click Finish.

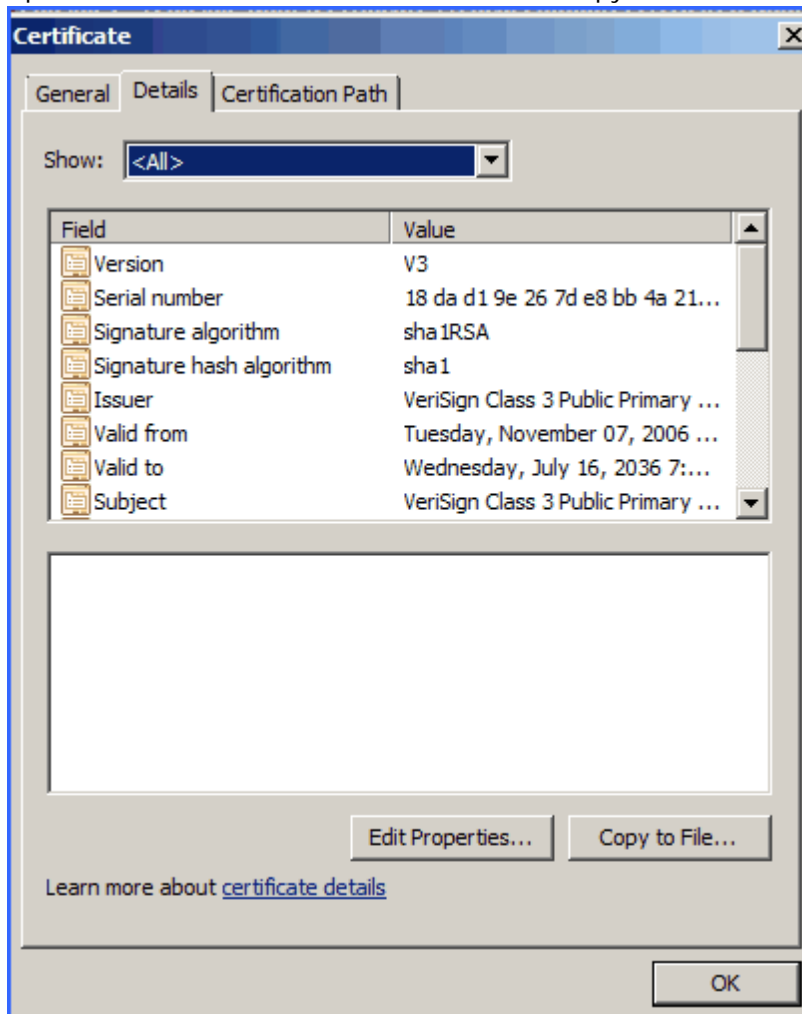


5. Click OK.

- Expand Certificates (Local Computer)->Trusted Root Certification Authorities->Certificates. Find the root certificate. For AT&T this is the Verisign "G5" certificate:

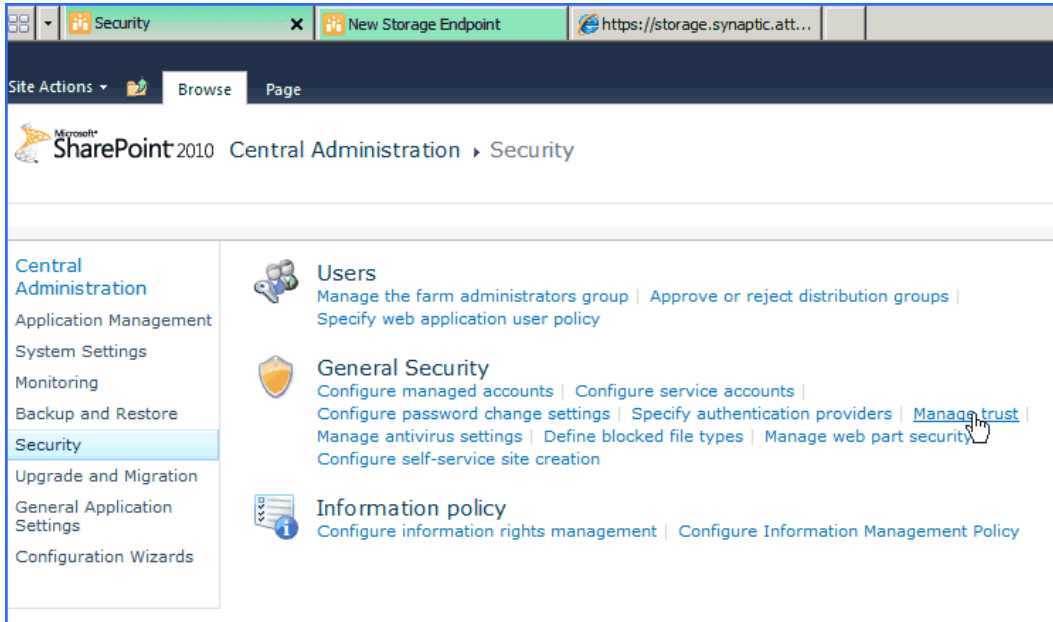


- Open the certificate. On the Details tab, click Copy To File...

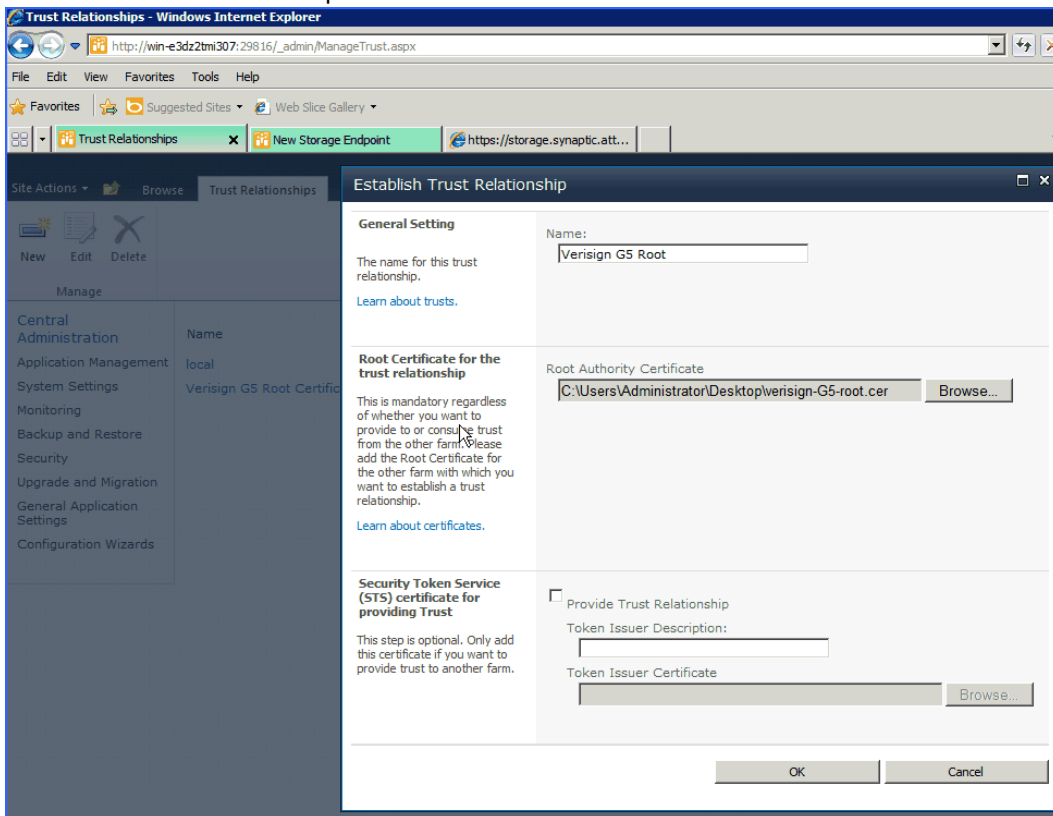


- The Certificate Export Wizard opens. Click Next. The default "DER" format is fine. Save to the desktop as something like verisign-G5-root.cer. Click Next.

9. Click Finish to complete the export. Click OK on the message. Click OK to close the certificate window.
10. Open the SharePoint Central Administration. Click Security from the navigation on the left. Select Manage Trust from the General Security section.



11. You will probably only see one certificate here, "local". Click "New."
12. Give it a name like Verisign G5 Root. Pick the file you exported to your desktop. Leave "Provide Trust Relationship" blank.



13. Click OK.

The Use SSL option can now be configured and used with the StoragePoint EMC Atmos adapter.

## Appendix: Atmos adapter support for TLS 1.1

The following steps need to be performed on all servers that have StoragePoint installed.

1) Install MS fix for TLS for .NET 3.5:

<https://support.microsoft.com/en-us/help/3154519/support-for-tls-system-default-versions-included-in-the-net-framework>

### Support for TLS System Default Versions included in the .NET Framework 3.5 on Windows Server 2012

Applies to: Windows 8, Windows Server 2012 Datacenter, Windows Server 2012 Datacenter, [More](#)

The .NET framework version 3.5 and earlier versions did not provide support for applications to use Transport Layer Security (TLS) System Default Versions as a cryptographic protocol. This update enables the use of TLS v1.2 in the .NET Framework 3.5.

#### Resolution

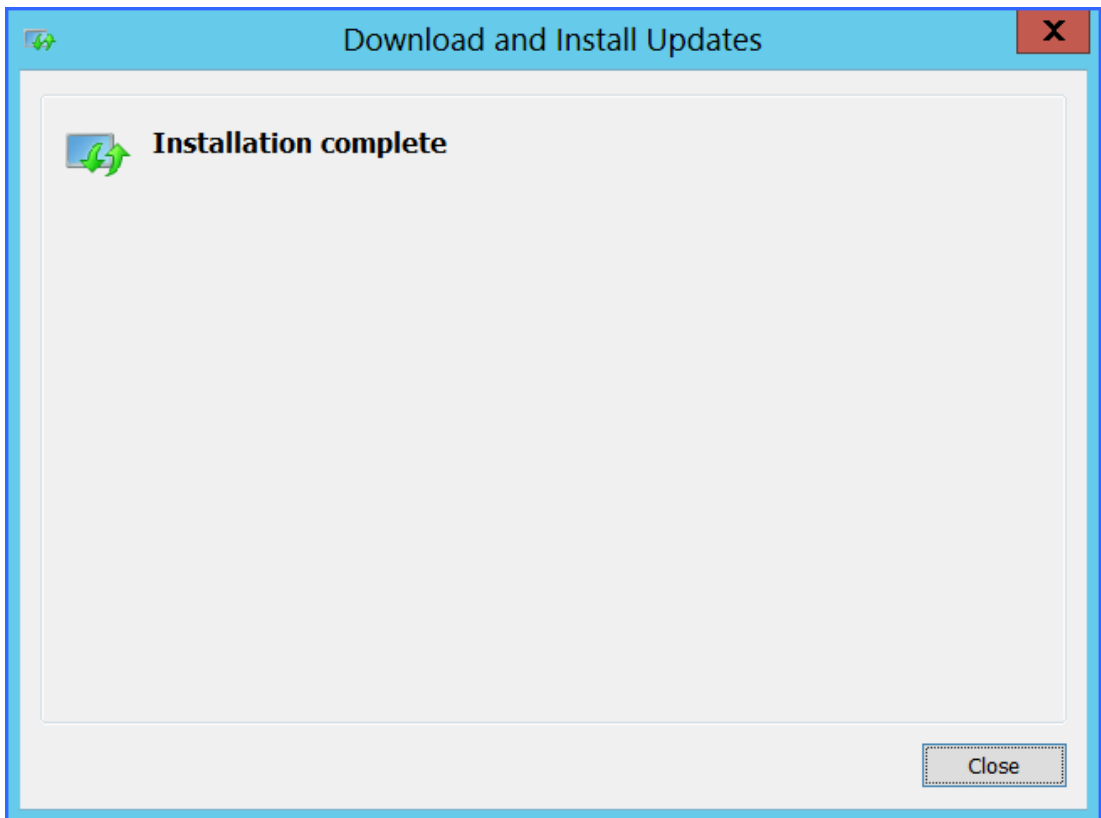
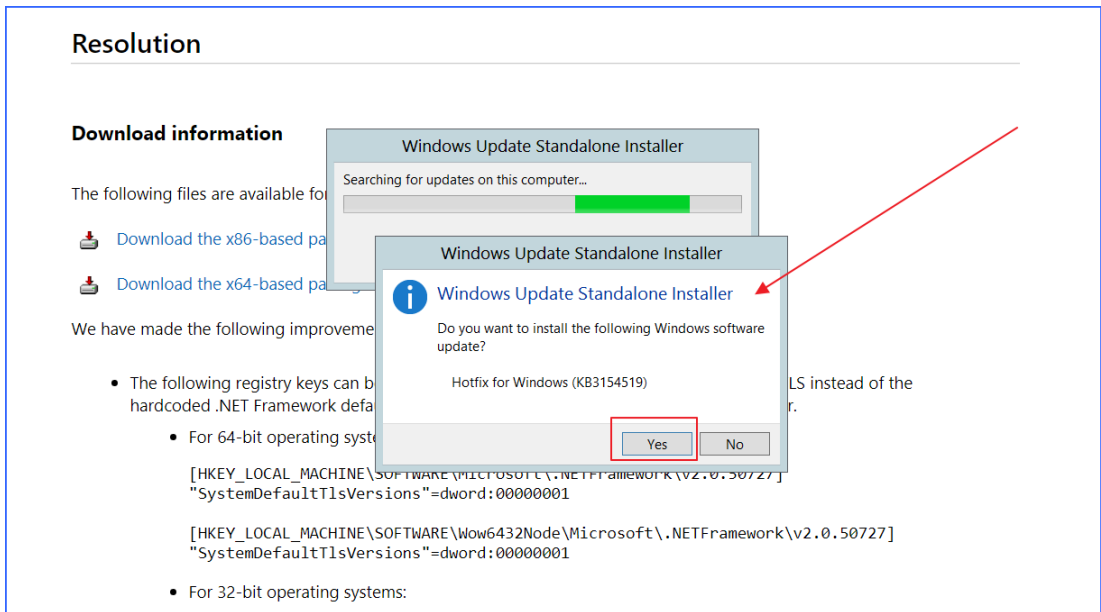
#### Download information

The following files are available for download from the Microsoft Download Center:

 [Download the x86-based package now.](#)

 [Download the x64-based package now.](#)

We have made the following improvements in this area:



- 2) Provide defaults for TLS configuration (in this case TLS 1.1). Add the following registry values (if missing):

```
[HKEY_LOCAL_MACHINE\SOFTWARE\Microsoft\NETFramework\v2.0.50727]
"SystemDefaultTlsVersions"=dword:00000001
```

```
[HKEY_LOCAL_MACHINE\SOFTWARE\Wow6432Node\Microsoft\NETFramework\v2.0.50727]
"SystemDefaultTlsVersions"=dword:00000001
```

- 3) Verify if TLS 1.1 client is enabled:

```
[HKEY_LOCAL_MACHINE\SYSTEM\CurrentControlSet\Control\SecurityProviders\SCHANN  
EL\Protocols\TLS 1.1\Client]
```

```
"Enabled"=dword:00000001
```

```
"DisabledByDefault"=dword:00000000
```

- 4) Complete an IIS reset and SP Timer Service Reset.
- 5) Test on Atmos endpoint web page.
- 6) Run the BLOB Health Analyzer job for requested profile(s).



---

## About Us

Quest creates software solutions that make the benefits of new technology real in an increasingly complex IT landscape. From database and systems management, to Active Directory and Office 365 management, and cyber security resilience, Quest helps customers solve their next IT challenge now. Around the globe, more than 130,000 companies and 95% of the Fortune 500 count on Quest to deliver proactive management and monitoring for the next enterprise initiative, find the next solution for complex Microsoft challenges and stay ahead of the next threat. Quest Software. Where next meets now. For more information, visit [www.quest.com](http://www.quest.com).

## Contacting Quest

For sales or other inquiries, visit [www.quest.com/contact](http://www.quest.com/contact).

## Technical Support Resources

Technical support is available to Quest customers with a valid maintenance contract and customers who have trial versions. You can access the Quest Support Portal at <https://support.quest.com>

The Support Portal provides self-help tools you can use to solve problems quickly and independently, 24 hours a day, 365 days a year. The Support Portal enables you to:

- Submit and manage a Service Request
- View Knowledge Base articles
- Sign up for product notifications
- Download software and technical documentation
- View how-to-videos
- Engage in community discussions
- Chat with support engineers online
- View services to assist you with your product