

Toad® IBM® DB2® z/OS® Components 7.4.1

## **Installation Guide**



© 2022 Quest Software Inc.  
ALL RIGHTS RESERVED.

This guide contains proprietary information protected by copyright. The software described in this guide is furnished under a software license or nondisclosure agreement. This software may be used or copied only in accordance with the terms of the applicable agreement. No part of this guide may be reproduced or transmitted in any form or by any means, electronic or mechanical, including photocopying and recording for any purpose other than the purchaser's personal use without the written permission of Quest Software Inc.

The information in this document is provided in connection with Quest Software products. No license, express or implied, by estoppel or otherwise, to any intellectual property right is granted by this document or in connection with the sale of Quest Software products. EXCEPT AS SET FORTH IN THE TERMS AND CONDITIONS AS SPECIFIED IN THE LICENSE AGREEMENT FOR THIS PRODUCT, QUEST SOFTWARE ASSUMES NO LIABILITY WHATSOEVER AND DISCLAIMS ANY EXPRESS, IMPLIED OR STATUTORY WARRANTY RELATING TO ITS PRODUCTS INCLUDING, BUT NOT LIMITED TO, THE IMPLIED WARRANTY OF MERCHANTABILITY, FITNESS FOR A PARTICULAR PURPOSE, OR NON-INFRINGEMENT. IN NO EVENT SHALL QUEST SOFTWARE BE LIABLE FOR ANY DIRECT, INDIRECT, CONSEQUENTIAL, PUNITIVE, SPECIAL OR INCIDENTAL DAMAGES (INCLUDING, WITHOUT LIMITATION, DAMAGES FOR LOSS OF PROFITS, BUSINESS INTERRUPTION OR LOSS OF INFORMATION) ARISING OUT OF THE USE OR INABILITY TO USE THIS DOCUMENT, EVEN IF QUEST SOFTWARE HAS BEEN ADVISED OF THE POSSIBILITY OF SUCH DAMAGES. Quest Software makes no representations or warranties with respect to the accuracy or completeness of the contents of this document and reserves the right to make changes to specifications and product descriptions at any time without notice. Quest Software does not make any commitment to update the information contained in this document.

If you have any questions regarding your potential use of this material, contact:

Quest Software Inc.  
Attn: LEGAL Dept  
4 Polaris Way  
Aliso Viejo, CA 92656

Refer to our web site ([www.quest.com](http://www.quest.com)) for regional and international office information.

## Patents

Quest Software is proud of our advanced technology. Patents and pending patents may apply to this product. For the most current information about applicable patents for this product, please visit our website at [www.quest.com/legal](http://www.quest.com/legal).

## Trademarks

Quest, Quest Software, Benchmark Factory, Spotlight, SQL Navigator, vWorkspace, Toad, and the Quest logo are trademarks of Quest Software Inc. in the U.S.A. and other countries. For a complete list of Quest Software trademarks, please visit our website at [www.quest.com/legal](http://www.quest.com/legal). Microsoft, Windows, Windows Server, Windows Vista, Visual Studio, SharePoint, Access and Excel are either registered trademarks or trademarks of Microsoft Corporation in the United States and/or other countries. Oracle is a trademark or registered trademark of Oracle and/or its affiliates in the United States and other countries. Citrix® and XenApp™ are trademarks of Citrix Systems, Inc. and/or one or more of its subsidiaries, and may be registered in the United States Patent and Trademark Office and in other countries. IBM and DB2 are registered trademarks of International Business Machines Corporation. Subversion is a trademark of the Apache Software Foundation. All other trademarks, servicemarks, registered trademarks, and registered servicemarks are property of their respective owners.

Toad IBM DB2 z/OS Components 7.4.1  
Installation Guide  
Wednesday, August 10, 2022

# Table of Contents

<b>Table of Contents</b> .....	<b>1</b>
Why Install Toad IBM DB2 z/OS Components .....	2
Prepare to Install Toad IBM DB2 z/OS Components .....	2
Mainframe Requirements .....	2
Other WLM Environment Requirements .....	3
Privileges Required .....	3
For Installing the z/OS Component .....	3
For Running the z/OS Component .....	3
IBM DB2 Subsystem Performance Requirement .....	3
<b>Catalog IBM DB2 Subsystem Before Installation</b> .....	<b>4</b>
<b>Why Manually Transfer the Installation Files?</b> .....	<b>7</b>
<b>Perform the Transfer Manually</b> .....	<b>8</b>
<b>Mainframe Objects</b> .....	<b>10</b>
<b>IBM DB2 Objects</b> .....	<b>11</b>
<b>Purpose of QCIVP</b> .....	<b>12</b>
Where QCIVP Resides .....	12
How to Run QCIVP .....	12
<b>Reasons for Editing QCIVP</b> .....	<b>13</b>
<b>Edit QCIVP</b> .....	<b>14</b>
Enable Application Tracing .....	14
Disable Application Tracing .....	15
Enable Application Tracing and Change the Default DB2 SSID .....	15
Change the Default DB2 SSID Without Enabling Application Tracing .....	16
<b>About Us</b> .....	<b>18</b>
We are more than just a name .....	18
Our brand, our vision. Together. ....	18
Contact Quest .....	18
Technical Support Resources .....	18
<b>Index</b> .....	<b>19</b>

# Why Install Toad IBM DB2 z/OS Components

You must install the Toad IBM DB2 z/OS Components on each IBM DB2 for z/OS subsystem that you want to manage using Toad for IBM DB2. The z/OS components enables you to use Toad to perform the following functions on the IBM DB2 subsystem:

- Bind and rebind packages and plans
- Invoke utilities and commands within scripts that Toad for IBM DB2 advanced alters and migrations generate
- Run stand-alone IBM DB2 utilities in Toad
- Run IBM DB2 for z/OS commands from the Editor
- Remotely execute IBM DB2 for z/OS scripts
- Create, alter, or drop dataset templates
- Run DISPLAY, START and STOP commands on databases, tablespaces and indexes
- Access accurate bufferpool information
- View volumes available for defining storage
- Access information about the current threads connected to the IBM DB2 subsystem
- Assign a RACF group to a Toad Security role

## Prepare to Install Toad IBM DB2 z/OS Components

After you install Toad for IBM DB2 on the client machine, install the Toad IBM DB2 z/OS Components on each IBM DB2 subsystem that you want Toad to manage. Review this section to ensure that the proper user privileges and system requirements are in place for each IBM DB2 subsystem.

### Mainframe Requirements

Before installing Toad IBM DB2 z/OS Components, ensure that your mainframe meets the following minimum hardware and software requirements:

<b>Database Server</b>	IBM DB2 for z/OS version 9 or later
<b>WLM application environments</b>	Two WLM application environments are required. The environments must be defined using ISPF Application <code>IWMARINO</code> . <i>z/OS VIR6.0 MVS Planning Workload Management</i> (SA22-7602-06) provides instructions for using the WLM ISPF panels. <b>Note:</b> The z/OS components must have these two WLM environments for its <i>exclusive use</i> . Do not attempt to use pre-existing WLM environments used for other applications.
<b>Resource Recovery</b>	Resource Recovery Services (RRS) subsystem installed and active for your DB2 WLM application environment. <i>z/OS VIR6.0 MVS Programming Resource Recovery</i>

**Services**

(SA22-7616-04) and z/OS *VIR4.0 MVS System Commands* (SA22-7627-11) provide instructions for setting up and starting RRS on your system.

## Other WLM Environment Requirements

For WLM usage, verify that the load module `SORT` is in the Link Pack Area (LPA) or is marked as reentrant. Due to limitations of the WLM address space starting in Program Status Word (PSW) key 8, a non-reentrant `SORT` load module causes an `ABEND SOC4` when `DSNUTILB` calls `SORT` during utility processing.

**Note:** When running `SYNCSORT` in the WLM environment, users might receive `ABEND SOC4` errors when `DSNUTILB` calls `SYNCSORT`. You can contact `SYNCSORT` to obtain a fix tape that contains support for IBM DB2 stored procedures. This fix applies ZAPs to the current `SORT` modules, and then creates a new `SORT` stub and aliases to a new reentrant module `SYNCFNI`. The documentation accompanying the tape provides instructions for applying the fix.

## Privileges Required

### For Installing the z/OS Component

Generally, any user can run the Toad IBM DB2 z/OS Components Installation wizard. However, one phase in the installation is to transfer installation files from the Toad client to the mainframe. If you want the wizard to automatically perform this transfer, the user ID running the wizard must have permissions to FTP the files.

After the wizard finishes its part of the installation process, the user must perform additional tasks on the mainframe to complete the z/OS components installation. The user who performs these post-wizard tasks must have the following privileges and authorities:

- `SYSADM` privileges in order to run `SPUFI` scripts and to create objects
- `EXECUTE` authority on all packages in the `DSNAOCLI` collection

Generally, a systems programmer performs the post-wizard tasks.

### For Running the z/OS Component

The `permh1q.JCLLIB (GRANTS)` member predefines the privileges required to run the z/OS components. One of the post-wizard installation tasks is to edit and execute this member to grant these permissions to the authorization IDs you specify in the member.



## IBM DB2 Subsystem Performance Requirement

To improve overall z/OS components performance on the IBM DB2 subsystem, define an index on the `OWNER` column in `SYSIBM.SYSPLAN` in the subsystem.

# Catalog IBM DB2 Subsystem Before Installation

Before installing Toad IBM DB2 z/OS Components, make sure that the IBM DB2 for z/OS subsystem on which you are installing the z/OS components is cataloged on your Toad DB2 client.

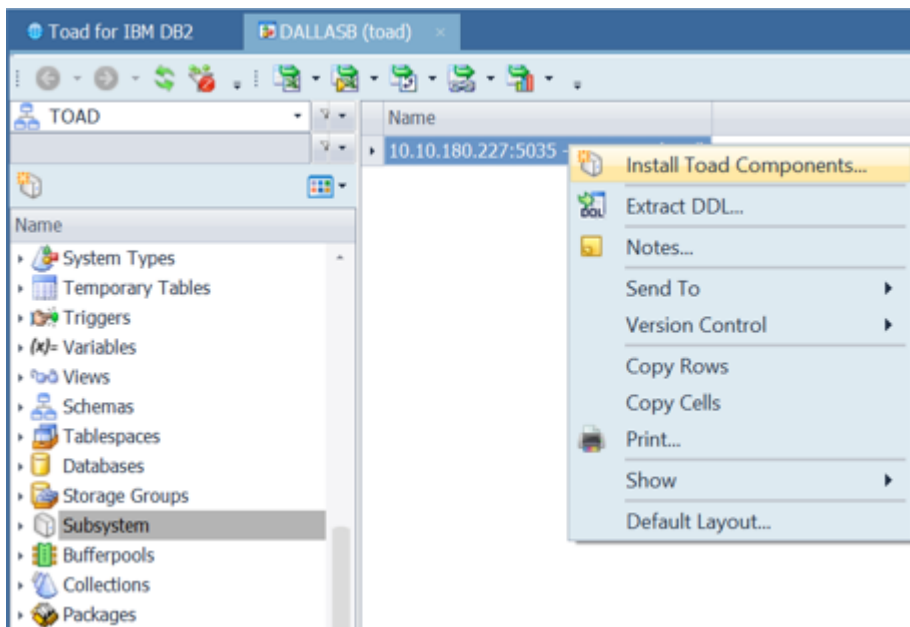
## To catalog IBM DB2 subsystem

1. In Toad for IBM DB2, click  in the Toad toolbar.
2. Click  in the Connections window to launch the Client Configuration wizard.
3. For instructions on how to catalog the DB2 subsystem, press F1.

Follow these instructions to install Toad IBM DB2 z/OS Components on your IBM DB2 subsystem:

**Note:** Toad for z/OS IBM DB2 Components version number has been updated to 7.4.1 to reflect changes connected with the installation wizard. If you have version 7.2 previously installed on you z/OS subsystems you can carry on using them and do not need to re-install.

1. Connect to DB2 z/OS database.
2. Right-click the subsystem you want to install the components on and select **Install Toad Components**.



3. Complete the **Specify the z/OS DB2 Subsystem** page. Identify the subsystem on which you are installing the z/OS components. Review the following for additional information:

Field	Description
Subsystem ID	Enter the SSID for the DB2 subsystem on which you are installing the z/OS components. This should be the actual SSID, not an alias, for the subsystem.
User ID	Enter your User ID.
Password	Enter your password.
DB2 exit library	Enter the fully qualified name of the DB2 exit library.
DB2 load library	Enter the fully qualified name of the DB2 load library.

4. Complete the **Specify Workload Manager (WLM) Environments for Toad** page.

Provide the names of the single-tasking and the multi-tasking WLM application environments used by IBM DB2 stored procedures and functions (These procedures and functions, in turn, are used by Toad for DB2). You can enter up to 32 characters for application environment names.

**Notes:**

- The two WLM application environments you specify must be reserved for exclusive use by Toad products, such as Toad for IBM DB2. Do not attempt to specify pre-existing WLM environments that are used for other applications.
- The wizard allows up to 32 characters for an application environment name.
- The multi-tasking WLM application environment must have at least 2 TCBs.

5. Complete the **Provide Parameters for Creating the Toad Database** page. Enter the following information to create the database required by the z/OS components. This database is created in the subsystem where you are installing the z/OS components.

**Note:** This database must be reserved for exclusive use by Toad DB2 products, such as Toad for IBM DB2.

Field	Description
Storage group	Enter the name of the storage group for the database objects.
Tablespace bufferpool	Enter the name of the bufferpool for tablespaces in the database.
Index bufferpool	Enter the name of the bufferpool for the indexes in the database.
DB2 CLI collection ID	Specify the identifier of the collection used when the DB2 installation job DSNTIJCL was run. If you do not know this collection ID, consult your systems programmer.
DB2 CLI plan name	Specify the name of the plan used when the DB2 installation job DSNTIJCL was run. If you do not know the plan name, consult your systems programmer.

6. Complete the **Specify High Level Qualifiers (HLQs) for Toad z/OS Datasets** page. Provide the high-level qualifier for the temporary datasets on the mainframe to which the installation files will be transferred initially and provide the high-level qualifier for the permanent location of the Toad IBM DB2 z/OS Components files once the installation JCL is executed on the mainframe.

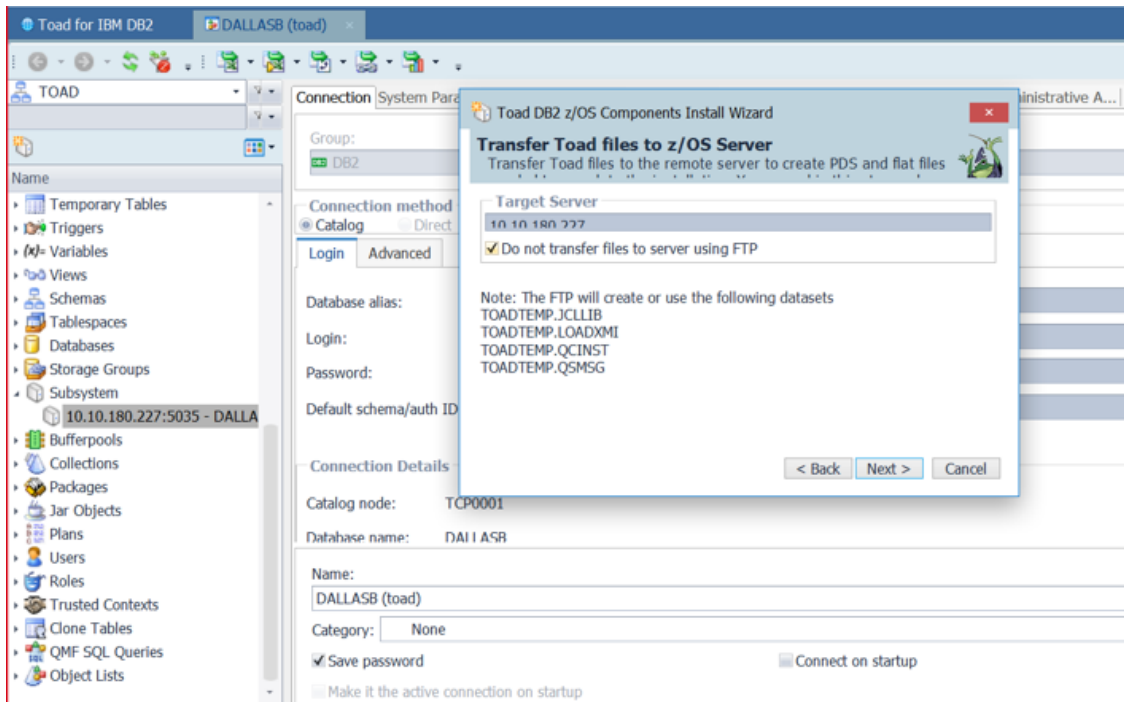
7. Complete the **Customize the JCL Job Card** page. Edit it according to the z/OS remote server.

8. Complete the **Customize Files for Transfer to the z/OS Subsystem** page. Enter the local path and directory where you want the installation process to generate and temporarily store customized installation files on the Toad client machine.

9. **Review Customization Results** on the following page.
10. Complete the **Transfer Toad Files to the z/OS Server** page. Enter the IP address of the Target Server and click Next.

**Note:**

- You can skip the FTP transfer and transfer the files manually.



11. Complete the **FTP Sign-on** page. Review the following for additional information:

Field	Description
FTP Connection	Select the FTP connection from the list.
Server address	Enter the IP address to which the files are transferred.
Server port	Enter the server port.
Username	Enter the mainframe user ID under which FTP transfers the files from the local directory on the Toad client machine to the temporary location on the mainframe.
Password	Enter the password associated with this user ID.

12. **Review FTP Results** on the following page.
13. On the **Review Finishing Installation Tasks** page, review the README file stored in the local directory specified for the file transfer. This README file contains instructions for the additional tasks that must be performed on the mainframe to complete the z/OS components installation.



# Why Manually Transfer the Installation Files?

The Toad IBM DB2 z/OS Components Installation wizard uses the default Windows FTP program to transfer the z/OS components installation files automatically from your Toad client machine to temporary datasets on the mainframe. However, you might need to transfer these files yourself for various reasons, such as:

- Windows FTP is not available.
- The wizard's attempt to transfer the files failed.
- You selected the **Do not FTP files to the mainframe** option in the wizard.

# Perform the Transfer Manually

The process of manually transferring the z/OS components installation files from the Toad client machine to the mainframe involves two main tasks:

- Manually allocating four temporary datasets on the mainframe
- Populating these datasets using a normal 3270 emulation product that supports TSO `IND$FILE` transfer

## To transfer the z/OS components installation files manually

1. Using ISPF option 3.2, allocate the following datasets on the mainframe, where *temphlq* is the temporary high-level qualifier for the datasets:

Dataset	Type	Allocation Specifications
<i>temphlq</i> .LOADXMI	Sequential	recfm=fb, recsize=80, blksize=3120, space=(cyl, (25, 15))
<i>temphlq</i> .QCINST	Sequential	recfm=fb, recsize=80, blksize=3120, space=(trk, (10, 5))
<i>temphlq</i> .JCLLIB	PDS	recfm=fb, recsize=80, blksize=3120, space=(trk, (10, 10, 5))
<i>temphlq</i> .QSMSG	Sequential	recfm=vb, recsize=1028, blksize=6144, space=(trk, (10, 10))

**Note:** *temphlq*.JCLLIB must be a partitioned dataset.

2. Use `IND$FILE` in binary mode to transfer the file `QuestDB2product_install\plugins\db2\zos\loadlib.xmi` to *temphlq*.LOADXMI.

**Note:** The `QuestDB2product_install` value is the directory where the Toad for DB2 client (or another Toad IBM DB2 product) is installed on your Windows machine. The *temphlq* value is the high-level qualifier for the temporary mainframe datasets you allocated. References to these variables are also found in steps that follow.

3. Use `IND$FILE` in ASCII mode to transfer the file `QuestDB2product_install\plugins\db2\zos\qs.msg` to *temphlq*.QSMSG.
4. Use `IND$FILE` in ASCII mode to transfer the following files from `temp_local_directory\subsystem_id` on your Toad client machine to the appropriate members of *temphlq*.JCLLIB.

**Note:** `temp_local_directory` is the value you provided for **Temporary local directory** in the wizard to identify the temporary staging location for certain customized installation files on the Windows machine. The `subsystem_id` value is the SSID you specified in the wizard to identify the IBM DB2 subsystem on which you installing the z/OS components. The *temphlq* is the high-level qualifier for the temporary mainframe datasets you allocated. References to these variables are also found in steps that follow.

Windows File Name	Dataset Member Name
QPDSNAT	<i>temphlq</i> .JCLLIB(QPDSNAT)

Windows File Name	Dataset Member Name
QCIVP	<i>tempqlq.JCLLIB(QCIVP)</i>
<i>single_tasking_WLM_environment_name</i>	<i>tempqlq.JCLLIB(single_tasking_WLM_environment_name)</i>
<i>multi-tasking_WLM_environment_name</i>	<i>tempqlq.JCLLIB(multi-tasking_WLM_environment_name)</i>

**Note:** *single\_tasking\_WLM\_environment\_name* and *multi\_tasking\_environment\_name* are the names of the WLM environments you specified in the wizard.

5. Use `IND$FILE` in ASCII mode to transfer the file *temp\_local\_directory\subsystem\_id\QCINST* to *tempqlq.QCINST*.
6. On the mainframe, run *tempqlq.QCINST*. Use the instructions explained in the `README` file (located in *temp\_local\_directory\subsystem\_id* or in *QuestDB2product\_install\plugins\db2\zos*) to complete the installation process.

The Toad IBM DB2 z/OS Components installation creates the following objects on the mainframe.

# Mainframe Objects

The z/OS components installation creates the following mainframe objects on your z/OS system. You need these objects to enable full Toad for IBM DB2 functionality for your IBM DB2 subsystem.

**Note:** The *permhlq* value is the high-level qualifier for the permanent datasets created by the installation.

Object	Location on the Mainframe
Single-task WLM procedure	SYSTEM.PROCLIB
Multi-task WLM procedure	SYSTEM.PROCLIB
QPDSNAT procedure	SYSTEM.PROCLIB
Quest message file	<i>permhlq</i> .QSMSG
Quest load library	<i>permhlq</i> .LOADLIB

# IBM DB2 Objects

The installation process creates the following IBM DB2 for z/OS objects:

Object Type	Object Name
Database	QCDB
Tablespace	QCBLUEPT, QCJFITS, QCTEMPLT, QCUTLIN, QCUTLOUT
Table	QUEST.QCBLUEPT_REPO030, QUEST.QCBLUEPT_STMT030, QUEST.QCJFI300_INPUT, QUEST.QCJFI300_OUTPUT, QUEST.QCTEMPLATE_REPO200, QUEST.QCUTL200_OUTPUT, QUEST.QCUTL200_TEMPLATES
Index	QUEST.QCBLUEPT_REPO030, QUEST.QCBLUEPT_STMT030, QUEST.QCTEMPLATE_REPO200
Function	QUEST.QC200CHECKPDS, QUEST.QC200COMMAND, QUEST.QC200DSVOLSTATS, QUEST.QC200GETVOLUMEINFO, QUEST.QC200LISTMEMBER, QUEST.QC200STOGROUPVOLS, QUEST.QC200SUBSYSINFO, QUEST.QC200ZPARM, QUEST.QCVER, QUEST.QC200DSNCOMMAND, QUEST.QC202DSVOLSTATS, QUEST.QCAUTH, QUEST.QC204DSVOLSTATS
Procedure	QUEST.QC200EXECUTE_UTIL, QUEST.QC200SQLMSG, QUEST.QC300JFI, QUEST.QC450RETHLQ
Global Temp Table	QUEST.QC_UTILOBJ
Schema	QUEST

This appendix describes how to customize the installation verification program QCIVP.

# Purpose of QCIVP

After the Toad IBM DB2 z/OS Components Installation wizard finishes its tasks, you must perform additional tasks on the mainframe to complete the installation. The last of these mainframe tasks is to run `QCIVP`, a mainframe installation verification program. `QCIVP` verifies that the IBM DB2 CLI has been installed and bound. It also runs a sample of the components's procedures and functions and then writes the output to the `QSPRINT` message file.

## Where QCIVP Resides

The dataset member `permhlq.JCLLIB(QCIVP)` contains the JCL for running `QCIVP`. This dataset is created during the z/OS components installation process you perform on the mainframe.

## How to Run QCIVP

The instructions for running `QCIVP`, as well as for performing all other tasks required to complete the installation on the mainframe, are found in the `README` file for the Toad IBM DB2 z/OS Components installation. This `README` file is found in either location:

- The `subsystem_ID` directory in the location you specified for **Temporary Local Directory** in the Toad IBM DB2 z/OS Components Installation wizard
- The `Plugins\DB2\ZOS` directory under your Toad for DB2 installation directory.

# Reasons for Editing QCIVP

Before running `QCIVP`, you might need to edit the program if any of the following situations is valid:

- You want to enable application tracing while `QCIVP` is running so that a series of trace messages are written to a user-supplied file for every call to a CLI function for that job.
- In situations where two or more DB2 subsystems share the same exit library (and therefore share a common `DSNHDECP` member in the library), the default subsystem ID in `DSNHDECP` matches one of the subsystem IDs, but not the others. You need a mechanism for providing the correct IBM DB2 subsystem ID for connection to the subsystems whose IDs do not match the default SSID in `DSNHDECP`. You can accomplish this by coding a `DSNAOINI` override in `QCIVP`.

# Edit QCIVP

Use the appropriate procedure to edit QCIVP:

- Turn on application tracing. See "Enable Application Tracing" on page 14 for more information.
- Turn off application tracing. See "Disable Application Tracing" on page 15 for more information.
- Turn on application tracing and change the default IBM DB2 SSID. See "Enable Application Tracing and Change the Default DB2 SSID" on page 15 for more information.
- Change the default IBM DB2 SSID without turning on application tracing. See "Change the Default DB2 SSID Without Enabling Application Tracing" on page 16 for more information.

## Enable Application Tracing

Use the following procedure to edit QCIVP to enable application tracing for the duration of the QCIVP job.

**Note:** Enabling tracing for QCIVP does not affect the long-term results obtained from the WLM procedures.

### To enable application tracing

1. Open *permhlq*.JCLLIB(QCIVP) in an ISPF EDIT session (where *permhlq* is the high-level qualifier for the permanent location where the z/OS component was installed).
2. Type `NUM OFF` at the EDIT session command line to turn off sequence numbering.  
**Note:** If you fail to turn sequence numbering off, errors can occur. Be aware that you might need to turn sequence numbering off each time you edit QCIVP.
3. Add the following cards to QCIVP:

```
//APPTRC DD SYSOUT=*  
//DSNAOINI DD *  
#Turn on application tracing  
[COMMON]  
APPLTRACE=1  
APPLTRACEFILENAME="DD:APPTRC"  
/**
```

4. Save your changes to QCIVP.
5. Exit the ISPF EDIT session.
6. Confirm that sequence numbering is truly turned off by opening *permhlq*.JCLLIB(QCIVP) in another ISPF EDIT session. There should be no sequence numbers in columns 73-80 for lines appearing between //DSNAOINI and the /\*\* line.
7. Confirm that your square brackets translated correctly:
  - a. Type `FIND X 'AD' ALL` in the command line, and press Enter.
  - b. Make sure the FIND command locates all the left brackets.
  - c. Type `FIND X 'BD' ALL` in the command line, and press Enter.



- d. Make sure the `FIND` command locates all right brackets.
  - e. If `FIND` failed to located even one bracket, type `HEX ON` in the command line, press `Enter`, and then make the appropriate edits in `HEX` mode.
8. Save your changes to `QCIVP`.

## Disable Application Tracing

Use the following procedure to edit `QCIVP` to disable application tracing for the duration of the `QCIVP` job.

### To disable application tracing

1. Open `permhlq.JCLLIB(QCIVP)` in an ISPF EDIT session (where `permhlq` is the high-level qualifier for the permanent location where the z/OS component was installed).
2. Type `NUM OFF` at the EDIT session command line to turn off sequence numbering.
 

**Note:** If you fail to turn sequence numbering off, errors can occur. Be aware that you might need to turn sequence numbering off each time you edit `QCIVP`.
3. Edit the following card to set `APPLTRACE` to zero, as shown in the following figure:

```
//APPTRC DD SYSOUT=*
//DSNAOINI DD *
#Turn on application tracing
[COMMON]
APPLTRACE=0
APPLTRACEFILENAME="DD:APPTRC"
/**
```

4. Save your changes to `QCIVP`.
5. Exit the ISPF EDIT session.
6. Confirm that sequence numbering is truly turned off by opening `permhlq.JCLLIB(QCIVP)` in another ISPF EDIT session. There should be no sequence numbers in columns 73-80 for lines appearing between `//DSNAOINI` and the `/**` line.
7. Confirm that your square brackets translated correctly:
  - a. Type `FIND X 'AD' ALL` in the command line, and press `Enter`.
  - b. Make sure the `FIND` command locates all the left brackets.
  - c. Type `FIND X 'BD' ALL` in the command line, and press `Enter`.
  - d. Make sure the `FIND` command locates all right brackets.
  - e. If `FIND` failed to located even one bracket, type `HEX ON` in the command line, press `Enter`, and then make the appropriate edits in `HEX` mode.
8. Save your changes to `QCIVP`.

## Enable Application Tracing and Change the Default DB2 SSID

Use the following procedure both to enable application tracing and to change the IBM DB2 SSID from the default value in the `DSNHDECP` to the actual IBM DB2 SSID for the subsystem on which you are installing the z/OS components.

### To enable application tracing and change the default IBM DB2 SSID

1. Open *permhlq.JCLLIB(QCIVP)* in an ISPF EDIT session (where *permhlq* is the high-level qualifier for the permanent location where the z/OS component was installed).
2. Type *NUM OFF* at the EDIT session command line to turn off sequence numbering.

**Note:** If you fail to turn sequence numbering off, errors can occur. Be aware that you might need to turn sequence numbering off each time you edit *QCIVP*.

3. Add the following cards to *QCIVP*, replacing all occurrences of *XXXX* with the appropriate non-default DB2 SSID:

```
//APPTRC DD SYSOUT=*
//DSNAOINI DD *
#Turn on application tracing and change default DB2 SSID
#Change each occurrence of XXXX to the actual DB2 SSID
#Change plan name if CLI plan is not DSNACLI
[COMMON]
MVSDEFAULTSSID=XXXX
APPLTRACE=1
APPLTRACEFILENAME="DD:APPTRC"
[XXXX]
MVSATTACHTYPE=CAF
PLANNAME=DSNACLI
/**
```

4. Save your changes to *QCIVP*.
5. Exit the ISPF EDIT session.
6. Confirm that sequence numbering is truly turned off by opening *permhlq.JCLLIB(QCIVP)* in another ISPF EDIT session. There should be no sequence numbers in columns 73-80 for lines appearing between *//DSNAOINI* and the */\*\** line.
7. Confirm that your square brackets translated correctly:
  - a. Type *FIND X 'AD' ALL* in the command line, and press Enter.
  - b. Make sure the *FIND* command locates all the left brackets.
  - c. Type *FIND X 'BD' ALL* in the command line, and press Enter.
  - d. Make sure the *FIND* command locates all right brackets.
  - e. If *FIND* failed to located even one bracket, type *HEX ON* in the command line, press Enter, and then make the appropriate edits in *HEX* mode.
8. Save your changes to *QCIVP*.

## Change the Default DB2 SSID Without Enabling Application Tracing

Use the following procedure to change the IBM DB2 SSID from the default value in the *DSNHDECP* to the actual IBM DB2 SSID for your subsystem without enabling application tracing.

### To change the default DB2 SSID without enabling application tracing

1. Open *permhlq.JCLLIB(QCIVP)* in an ISPF EDIT session (where *permhlq* is the high-level qualifier for the permanent location where the z/OS component was installed).
2. Type *NUM OFF* at the EDIT session command line to turn off sequence numbering.

**Note:** If you fail to turn sequence numbering off, errors can occur. Be aware that you might need to turn sequence numbering off each time you edit `QCIVP`.

3. Add the following cards to `QCIVP`, replacing all occurrences of `XXXX` with the appropriate non-default DB2 SSID:

```
//APPTRC DD SYSOUT=*
//DSNAOINI DD *
#Change default DB2 SSID
#Change each occurrence of XXXX to the actual DB2 SSID
#Change plan name if CLI plan is not DSNACLI
[COMMON]
MVSDEFAULTSSID=XXXX
[XXXX]
MVSATTACHTYPE=CAF
PLANNAME=DSNACLI
CC/*
```

4. Save your changes to `QCIVP`.
5. Exit the ISPF EDIT session.
6. Confirm that sequence numbering is truly turned off by opening `permhlq.JCLLIB(QCIVP)` in another ISPF EDIT session. There should be no sequence numbers in columns 73-80 for lines appearing between `//DSNAOINI` and the `//*` line.
7. Confirm that your square brackets translated correctly:
  - a. Type `FIND X 'AD' ALL` in the command line, and press Enter.
  - b. Make sure the `FIND` command locates all the left brackets.
  - c. Type `FIND X 'BD' ALL` in the command line, and press Enter.
  - d. Make sure the `FIND` command locates all right brackets.
  - e. If `FIND` failed to located even one bracket, type `HEX ON` in the command line, press Enter, and then make the appropriate edits in `HEX` mode.
8. Save your changes to `QCIVP`.

## We are more than just a name

We are on a quest to make your information technology work harder for you. That is why we build community-driven software solutions that help you spend less time on IT administration and more time on business innovation. We help you modernize your data center, get you to the cloud quicker and provide the expertise, security and accessibility you need to grow your data-driven business. Combined with Quest's invitation to the global community to be a part of its innovation, and our firm commitment to ensuring customer satisfaction, we continue to deliver solutions that have a real impact on our customers today and leave a legacy we are proud of. We are challenging the status quo by transforming into a new software company. And as your partner, we work tirelessly to make sure your information technology is designed for you and by you. This is our mission, and we are in this together. Welcome to a new Quest. You are invited to Join the Innovation.

## Our brand, our vision. Together.

Our logo reflects our story: innovation, community and support. An important part of this story begins with the letter Q. It is a perfect circle, representing our commitment to technological precision and strength. The space in the Q itself symbolizes our need to add the missing piece—you—to the community, to the new Quest.

## Contact Quest

For sales or other inquiries, visit [www.quest.com/company/contact-us.aspx](http://www.quest.com/company/contact-us.aspx) or call 1-949-754-8000.

## Technical Support Resources

Technical support is available to Quest customers with a valid maintenance contract and customers who have trial versions. You can access the Quest Support Portal at <https://support.quest.com>.

The Support Portal provides self-help tools you can use to solve problems quickly and independently, 24 hours a day, 365 days a year. The Support Portal enables you to:

- Submit and manage a Service Request
- View Knowledge Base articles
- Sign up for product notifications
- Download software and technical documentation
- View how-to-videos
- Engage in community discussions
- Chat with support engineers online
- View services to assist you with your product

## A

application tracing

    disable 15

    enable 14-15

## C

catalog IBM DB2 subsystem 4

## D

DB2 objects created by installation 11

default SSID in DSNHDECP, change 15-16

## I

installation

    install process 4

    objects created 9

    pre-installation tasks 4

    privileges required 3

    software requirements

        mainframe 2

        WLM 3

## M

mainframe objects created by installation 10

## O

objects created by the installation

    IBM DB2 11

    mainframe 10

## P

performance requirement 3

privileges required for z/OS Component

    for installing 3

    for running 3

## Q

QCIVP

    about 12

    edit

        to change default SSID 15-16

        to disable application tracing 15

        to enable application tracing 14-15

## R

requirements

    mainframe 2

    software 2

    WLM 3

## S

software requirements 2

system requirements

    mainframe 2

    software 2

    WLM 3

## T

transfer installation files

    manually 7

## Z

z/OS components

    edit QCIVP 12

    installation 4

    installation requirements 2

    manual transfer of installation files 7

    objects created by installation 9

    pre-installation tasks 4

    privileges required 3

purpose 2