



erwin Evolve

Release Notes 2020.1.1

© 2021 Quest Software Inc.

ALL RIGHTS RESERVED.

This guide contains proprietary information protected by copyright. The software described in this guide is furnished under a software license or nondisclosure agreement. This software may be used or copied only in accordance with the terms of the applicable agreement. No part of this guide may be reproduced or transmitted in any form or by any means, electronic or mechanical, including photocopying and recording for any purpose other than the purchaser's personal use without the written permission of Quest Software Inc.

The information in this document is provided in connection with Quest Software products. No license, express or implied, by estoppel or otherwise, to any intellectual property right is granted by this document or in connection with the sale of Quest Software products. EXCEPT AS SET FORTH IN THE TERMS AND CONDITIONS AS SPECIFIED IN THE LICENSE AGREEMENT FOR THIS PRODUCT, QUEST SOFTWARE ASSUMES NO LIABILITY WHATSOEVER AND DISCLAIMS ANY EXPRESS, IMPLIED OR STATUTORY WARRANTY RELATING TO ITS PRODUCTS INCLUDING, BUT NOT LIMITED TO, THE IMPLIED WARRANTY OF MERCHANTABILITY, FITNESS FOR A PARTICULAR PURPOSE, OR NON-INFRINGEMENT. IN NO EVENT SHALL QUEST SOFTWARE BE LIABLE FOR ANY DIRECT, INDIRECT, CONSEQUENTIAL, PUNITIVE, SPECIAL OR INCIDENTAL DAMAGES (INCLUDING, WITHOUT LIMITATION, DAMAGES FOR LOSS OF PROFITS, BUSINESS INTERRUPTION OR LOSS OF INFORMATION) ARISING OUT OF THE USE OR INABILITY TO USE THIS DOCUMENT, EVEN IF QUEST SOFTWARE HAS BEEN ADVISED OF THE POSSIBILITY OF SUCH DAMAGES. Quest Software makes no representations or warranties with respect to the accuracy or completeness of the contents of this document and reserves the right to make changes to specifications and product descriptions at any time without notice. Quest Software does not make any commitment to update the information contained in this document.

If you have any questions regarding your potential use of this material, contact:

Quest Software Inc.

Attn: LEGAL Dept

4 Polaris Way

Aliso Viejo, CA 92656

Refer to our Web site (<https://www.quest.com>) for regional and international office information.

Patents

Quest Software is proud of our advanced technology. Patents and pending patents may apply to this product. For the most current information about applicable patents for this product, please visit our website at <https://www.quest.com/legal>.

Trademarks

Quest, the Quest logo, and Join the Innovation are trademarks and registered trademarks of Quest Software Inc. For a complete list of Quest marks, visit <https://www.quest.com/legal/trademark-information.aspx>. All other trademarks and registered trademarks are property of their respective owners.

erwin Evolve -Release Notes

Updated - June 2021

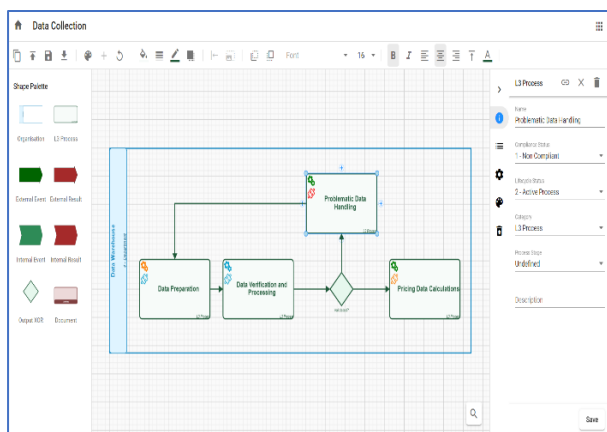
Version – 2020.1.1

What's New in erwin Evolve 2020.1

erwin Evolve 2020.1 is the latest release of the erwin Evolve Suite.

Major Release 2020.1

Following the successful introduction of Web Modeler, this 2020.1 release brings significant enhancements, including a high level of support for Shape Regions, Object and Association support offering clear & delete, and box-in-box support that can now create associations on publishing. This makes diagramming on the web a whole lot more capable.



Web Modeler goes next level:

- See Shape Regions live in Web Modeler.
- Clear and Delete support for Objects and Associations.
- Preview the Items that will be deleted on publishing
- Containment associations created when publishing.
- Pictures supported for Palette templates.
- Many other minor tweaks and enhancements.

As well as significant improvements to Web Modeler, erwin Evolve 2020.1 introduces two new products:

- **New product: erwin Evolve Analytics Accelerator 2**

Completely re-imagined from the ground up, Analytics Accelerator brings LIVE BI reporting to your models.

No need to wait for that overnight batch job, your Analytics are continually refreshed, and there is more...

Not only can you run BI reports on the most up to date data, but you are now able to report on the history of your models too.

Queries like, 'show me all the objects that changed in the last 3 months, who made the changes, and what were they' are easily within your grasp, using whichever* BI reporting tool you choose to use.

- **New product: erwin DM data import 2**

Two years ago we brought data model import from erwin DM to Evolve, now we introduce the next generation of DM importing. Faster, more automated, and with better support for Evolve Web Platform. You can now keep your data models up to date in Evolve, and associate this with your Processes and Applications from the Web.

erwin Evolve 2020.1 also brings the following enhancements:

- **New Simple Grid View (evolve View)**

A new table type has been added that can be used in place of the Simple Table, which not only supports Server-side Jump and Merge, but also offers filtering and sorting for the end user.

- **erwin Evolve Web Platform Security Update**

In keeping with the expected security of our platform, we bring the necessary updates and provide certification from our third-party testing team.

- **Less nagging when using temporary licenses**

Our temporary licenses now nag only when there are 15 days left on the clock. This removes the annoyance of clicking a warning on starting our applications, when the license has months to run.

- **Log messages are now much less busy**

Logging, now has a much tidier output when choosing the different levels. Most notably 'Info' is available, to provide all your analytics-based logs, but saving you from the 'Debug' level of detail. It is now much easier to see the wood for the trees, and the log files will not grow so fast. 'Debug' is still available, for when you really need it.

** BI tool must support SQL Server as a data source.*

Extended Service Release 2020.1.1

Following the successful introduction of Web Modeler, this 2020.1.1 release brings significant enhancements with Undo/Redo in Web Modeler, a much faster Global search, improvements in the Analytic Accelerator Service along with enhancements to XML Import and Communicator for Word (C4W) to make the tool more capable.

- **Undo / Redo in Web Modeler**

Now able to Undo and Redo changes to shapes and object values in the Web Modeler using CTRL+Z and CTRL+SHIFT+Z.

- **Global Search with a higher rate of indexing**

Global Search is now much faster at indexing large amounts of changed data.

- **Improvements in the Analytic Accelerator Service**

It can now optionally show names or the script names of the objects, which makes queries more convenient.

The table that contains the changes made to each object now shows the current value in addition to the previous value. Previously the current value had to be obtained from the object's table. This change again makes querying data simpler, with less need for complex joins.

- **XML Import**

Option to import associations by type, source, and target instead of GUIDs. This ensures associations will get updated if necessary rather than duplicated. [See here for more details.](#)

- **Communicator for Word Filtering (C4W)**

Now has the ability to filter based on property values to produce reduce sized XML files. [See here for more details.](#)

- **Evolve static page client-side caching**

Improved the performance of both static sites, and some static areas of dynamic sites, by intelligently caching content on the client browser as needed.

- **Fixes to stability and useability of Web Modeler**

- **And many bug fixes and tweaks to ensure the user experience**

Note: Service Release 2020.1.1 includes a recent version of MongoDB, however, this is not the latest version. Due to unforeseen issues, the latest version would not package correctly into our installer.



If you would like to use the latest version, which may include additional fixes and security updates, this is possible.

To install the new Mongo database, you must first uninstall the version packaged by our installer. To remove, use Add and Remove Programs, find MongoDB and uninstall. Then download the latest version from the MongoDB website, currently 4.4.5

<https://www.mongodb.com/try/download/community>

Install this newer version to the default location and continue to use Evolve as usual.



Note: Previous Release 2020.0.2 introduced some significant changes to file structure in the static website to facilitate authentication on a static site. If you are using scripts to migrate content from one server to another, please visit [the help here](#), which will explain the new structure.



Note: Previous Release 2020.0.2 no longer relies on IIS alone for the operation of a static site. This improvement to security, now requires the evolve engine to be active prior to a site being available for use. The result will be a slight delay to a static site being loaded, if the web server is asleep. This will only affect the first user to a site, if evolve is asleep, and it will force evolve to start. The delay will be comparable to that of the dynamic site..

Watch our dedicated erwin Evolve YouTube channel for more information about this exciting release.



Full list of enhancements and fixes

2020.1.1 Build (248/421)	
RFA / Issue	Description
BUG	[Web Modeler] – 9851121, 9851120 – Searches for some pre-existing objects with Categories may not find a result due to care sensitivity
2020.1.1 Build (248/420)	
RFA / Issue	Description
BUG	[Global Search] - Database service gets stuck fetching next block of records when the block is empty (Block size 20,000)
BUG	[Global Search] - Any Replaced model fails to index the pre-existing Global Search data
BUG	[Global Search] – Fails to index when Audit table contain records related to models that no longer exist
BUG	[Global Search] - Unable to search on certain text phrases in a specific model when a record contains more than one property with the same script name
BUG	[DB Schema] – CasewiseRW role missing access to new Global Search tables
BUG	[Model Delete] – Model delete can leave orphaned audit history behind
2020.1.1 Build (229/418)	
RFA / Issue	Description
BUG	[Suite] [ZT121967] - Fixed an issue where changing properties and closing an edit dialog quickly may cause HTML memo text to be lost

Performance	[Suite] - Changed the way Global Search indexes data, to be able to cope with large volumes of data change more efficiently
BUG	[Suite] [C4W] [ZT120964] - Fixed an issue that caused settings to be lost in CMXML
BUG	[Suite] [C4W] [ZT120982] - Fixed an issue where user-defined objects would not be filtered correctly when fetching using CMXML
BUG	[Suite] [C4W] [ZT120982] - Fixed issues with date filtering in CMXML
BUG	[Suite] - Fixed an issue where deleting a model left some traces behind, preventing the reloading of a model with the same model filename (nb: restarting the tool is required to allow the reloading of a model with the same filename)
Performance	[Suite] - Deleting a model is now significantly faster
ENH	[Suite] [ZT106343] - Added an option when using XML import to update associations that match on type, from the object and to object, but have differing GUIDs. This allows data to be merged from different sources, without causing duplicate associations. Option is called 'Map association to existing source and target object'
Performance/ BUG	[Suite] [ZT129527] - Removed superfluous attempts to delete memo data from several object types. This also contributes to fix a database deadlock in certain conditions
BUG	[Evolve Web] - Fixed an issue where Global Search might miss out indexing records due to file ordering inconsistencies. This would lead to missing search results
BUG	[Web Modeler] [8405034] - Fix incorrect dates being shown on date gauges
BUG	[Web Modeler] [8447336] - Fixed margin on images, to enable the closer match to word wrapping on Evolve Desktop
BUG	[Web Modeler] [8447365] - Fixed update date on Web Modeler diagrams

BUG	[Web Modeler] [8678637] - Fix issue with broken links and draft creation
BUG	[Web Modeler] [8720150] - Fix palette value for boolean property regions
BUG/ENH	[Evolve Web] - Added the creation of the site JSON for static site publishing and made the site be updated on a save and deploy as well. This allows changes to AD/SAML2 groups to take effect without a full publish
BUG	[Evolve Web] - Fix for dynamic sites which serve static content. Static content on dynamic sites now pulls from the generated static site correctly. Regenerated pages are put in the live/generated folder. So, the static site is no longer affected by dynamic users
BUG	[Evolve Web] - Fixed Secondary server access to static sites
BUG	[Web Modeler] [8781955] - Fix bug where conditional regions with decimals may not work as intended
BUG	[Evolve Web] [8591889] - Improved date handling in advanced Global Search
BUG	[Web Modeler] [9072240] - Fix bug where conditional regions with dates may not work as intended
ENH	[Web Modeler] [8802595] - Added Contains, Does Not Contain and Default operators to region support
BUG	[Evolve Web] - Fixed client-side caching of Metamodel and Access Rights responses
BUG	[Web Modeler] [ZT130998/ZT118281][9072243] - Add ability to save blank dates on object pages
BUG	[Diagram Designer] [ZT125691/ZT49618] - Some diagrams not rendered during a static publish. This may also fix some automatic diagram failures in a dynamic site

ENH	[Web Modeler] [9197435] - Added support for Gradient Fills
BUG	[Web Modeler] [ZT122489] - Web Modeler now indicates mandatory fields that are missing, in the todo list
BUG	[Evolve Diagrams] [ZT119903] - Diagrams with < > in the name of the shape won't load in Evolve
BUG	[Evolve Web] - Fixed client-side caching for static file content. This will improve the performance of both static sites, and some static areas of dynamic sites, by intelligently caching content on the client browser as needed
BUG	[Evolve Web] [ZT124967] - Comments on pages now support special characters
BUG	[Evolve Web] - Fix for Static Authentication, where it would create a Normal user with full model access. Now, if a user is set up for static authentication on one site and is a dynamic User on a separate site, then they will have a CM-User created for them, with access to both models. This fix ensures the static site is only accessible with read-only access
ENH	[Web Modeler] [9805858] - Added the ability to duplicate a published diagram as a new draft diagram. When the new draft diagram is published, it will publish to a new diagram (not replace the existing one)

2020.1.0 Initial Build (181/356)

RFA / Issue	Description
BUG	[Web Designer] [ZT111909] - Deletion of metadata being used by evolve no longer breaks Evolve Designer
BUG	[Web Modeler] Selecting an unsupported shape in Web Modeler causes diagramming to break

BUG	[Web Modeler] Accented characters now supported in web modeler's Object Name Search
BUG	[Web Modeler] Swimlane diagrams can now be edited if they contain pictures
BUG	[Web] [ZT113258] Diagram text justification now correct on vector diagrams that use default styles
BUG	[Web Modeler] Duplicate draft diagram now correctly uses the user diagram settings (eg show grid)
BUG	[Web Modeler] Integer properties correctly follow model validation
BUG	[Auth] ZT115258 SAML2 (SP initiated) now working correctly
BUG	[Web Modeler] [ZT114045] Web Modeler can now create same-name / different category diagrams
ENH	[Web] Evolve logging tidied and follows DEBUG/INFO/WARN/ERROR leveling more sensibly
ENH	[Suite] [Licensing] No-nags for CW temporary licensing licence - [ZT114792]
BUG	[Web Modeler] [ZT114044] Can now open diagrams when only a Version Control box exists
BUG	[Web] Object revision history now stays set to previous setting during an upgrade
BUG	[Web] [ZT113666] CW_USER record is again created for users logging in with CW Logon
BUG	[Web Modeler] [ZT112842] Deleted templates are now correctly removed when templates are published

BUG	[Evolve] [ZT113622] Custom Association Regions are now hidden correctly
BUG	[Suite] Count regions will not display correctly with association type
BUG	[Suite] Custom regions no longer show an error when set to 'show when exists'
ENH	[Web Modeler] Now supports the ability to clear or delete and shape/object from the diagram
ENH	[Web Modeler] Now supports the ability to clear or delete and association lines from the diagram
ENH	[Web Modeler] Now supports the ability to create associations for embedded shapes when publishing
ENH	[Web Modeler] Now has the ability to revert the deletion of an object prior to publishing
SEC	[Security] Several security fixes for SAST and DAST
BUG	[Web Modeler] Grid settings no longer need a refresh
BUG	[Web Modeler] Fixed an issue where the Save button was disabled when editing a newly named object
BUG	[Web Modeler] Can now create a diagram that only contains a Doc Block
BUG	[Global Search] Now supports more non-alphabetic character
BUG	[Web Designer] [ZT118815] Fixed Out of memory issue with Evolve Designer
SEC	[Suite] [ZT111106] Killbits now set for Actbar2.ocx during installation

BUG	[Web Designer] [ZT117366] Fixed warning when publishing templates, about duplicate templates, when there were none
ENH	[Web] New layout to show a simple grid (can be used in place of Simple Table), offers filtering and sorting
ENH	[Web Modeler] Regions are now supported, except navigation, explosion and association regions
ENH	[Web Modeler] Pictures are now supported off the palette
ENH	[CMI] Brand new CMI Analytics Accelerator provides live BI reporting database
BUG	[Web Modeler] Swimlane diagram, drop zone now shown if guide lines are turned on
ENH	[WebModeler] Change display name of shape to category if there a duplicates on the palette

Product Licensing

As of the 2018 release of erwin EA/BP Server, licensing is migrating to the standard erwin Inc. license system. During the migration, there will be a grace period, whereby existing customers can continue to use their existing Casewise licenses. erwin do not intend to force customers onto the new licensing, and will work with them to ensure a successful migration.



If you are considering upgrading to 2018, you should not be concerned with the new licensing system, as its usage is optional at the moment.

The license types available for erwin EA/BP Server include:

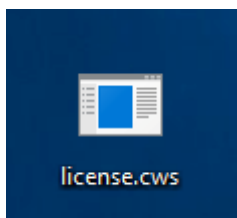
License	Description
erwin EA Server	The main server license which supports Evolve. This is usually supplied with a number of EA Contributor licenses. It often packages together both a Dynamic and a Static site license.
erwin BP Server	The main server license which supports Evolve. This is usually supplied with a number of BP Modeler licenses (aka eModeler). It often packages together both a Dynamic and a Static site license.
erwin EA Contributor	A single named user license, that enables users to modify content through a site.
erwin BP Modeler	A single named user license, that enables users to modify content through a site and use BP Modeler (aka eModeler).

Activating your erwin License:

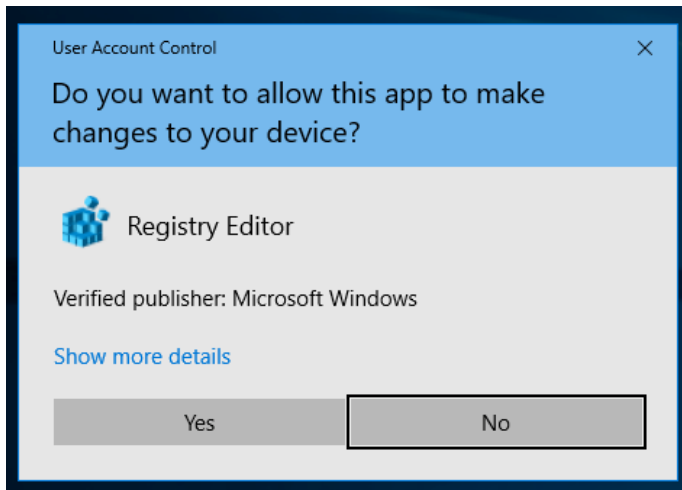
The process for activating an erwin EA/BP license is very simple.

1. Support will provide you with a single license file per Server machine that requires licensing.

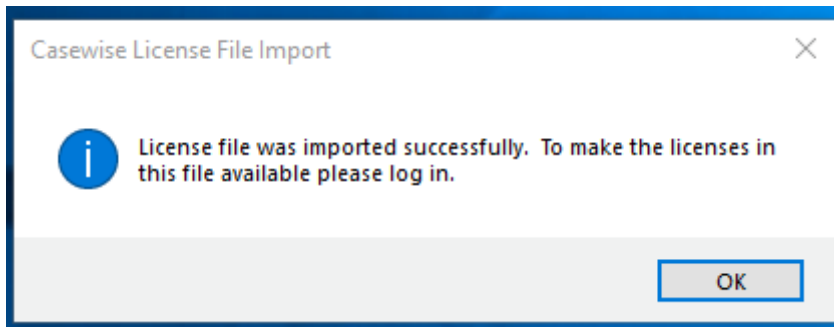
For example:



2. Having installed the software, copy this file to your server's desktop.
3. Double click on the file. You will be presented with a warning:

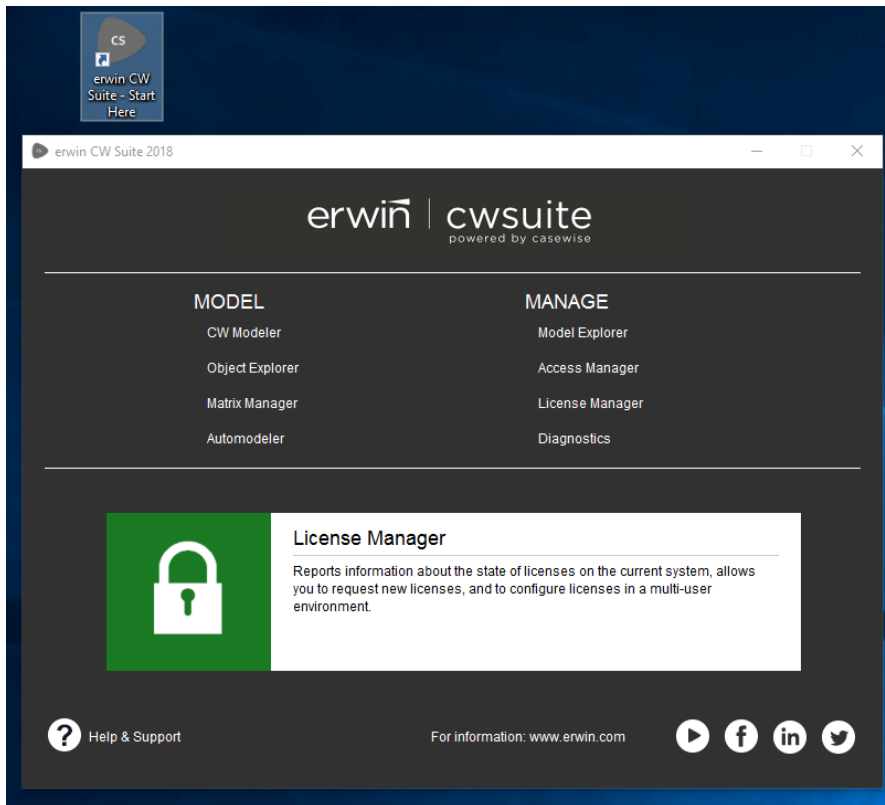


4. Press "Yes" to allow the tool to change the registry.

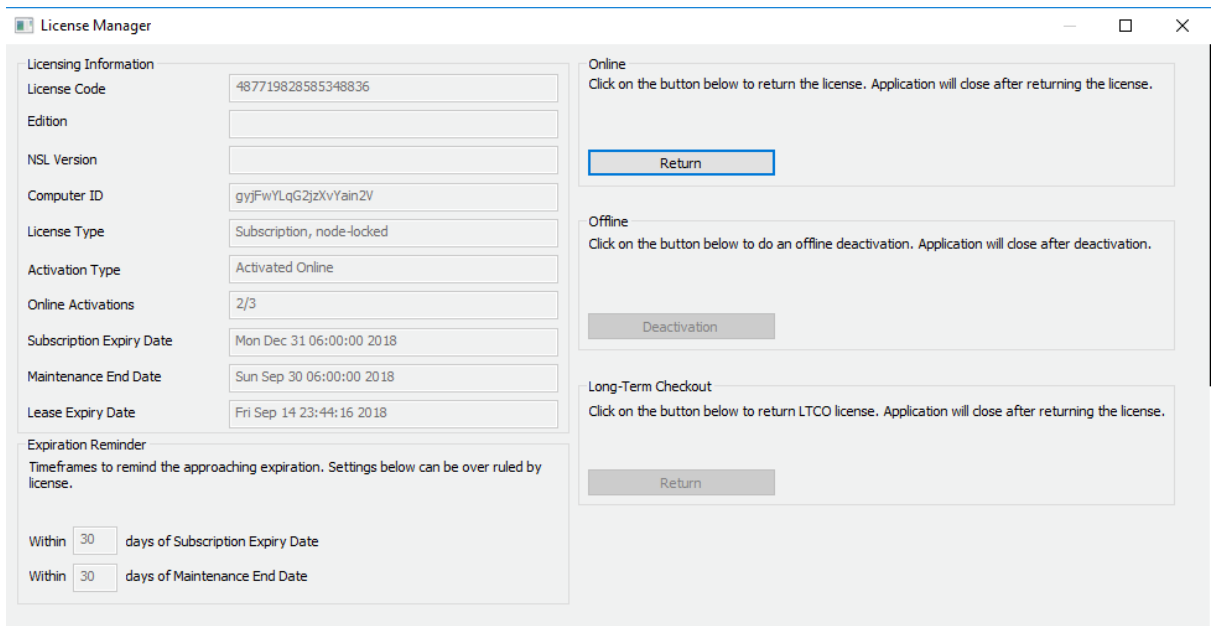


5. The software now has the purchased licenses activated on the server. To verify this, load the License Manager.

Open erwin CW Suite - Start Here...



6. Click on License Manager, and login.
7. License Manager will show the license code, activation count and various other attributes.



Returning your erwin License

If you need to move the license from on server to another, this can be performed up to 3 times, without contacting support.

1. Press "Return" in the "Online" section of the License Manage dialog
This will contact the licensing system, and return the license to the pool
2. Activate the software as usual on your new server.

If you run out of activations, you can have the counter reset, by contacting support.

About Us

Quest creates software solutions that make the benefits of new technology real in an increasingly complex IT landscape. From database and systems management to Active Directory and Office 365 management, and cyber security resilience, Quest helps customers solve their next IT challenge now. Around the globe, more than 130,000 companies and 95% of the Fortune 500 count on Quest to deliver proactive management and monitoring for the next enterprise initiative, find the next solution for complex Microsoft challenges and stay ahead of the next threat. Quest Software. Where next meets now. For more information, visit www.quest.com.

Technical support resources

Technical support is available to Quest customers with a valid maintenance contract and customers who have trial versions. You can access the Quest Support Portal at <https://support.quest.com>.

The Support Portal provides self-help tools you can use to solve problems quickly and independently, 24 hours a day, 365 days a year. The Support Portal enables you to:

- Submit and manage a Service Request
- View Knowledge Base articles
- Sign up for product notifications
- Download software and technical documentation
- View how-to-videos
- Engage in community discussions
- Chat with support engineers online
- View services to assist you with your product.