

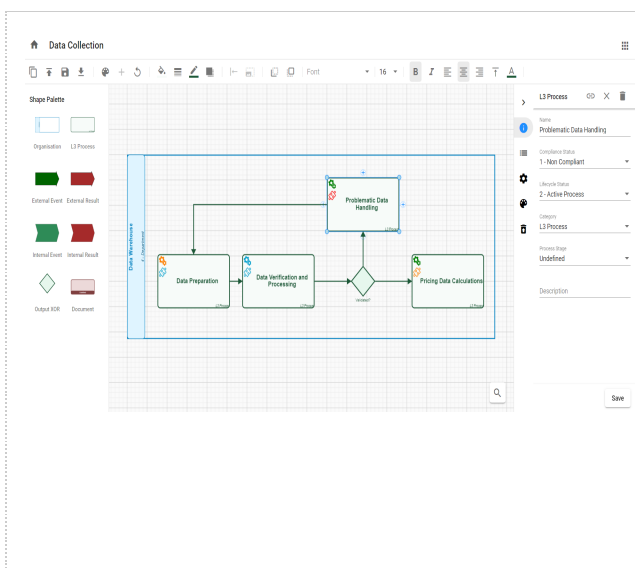
What's New in erwin Evolve 2020.1

erwin Evolve 2020.1 is the latest release of the erwin Evolve Suite.

Major Release

Following the successful introduction of Web Modeler, this 2020.1 release brings significant enhancements, including a high level of support for Shape Regions, Object and Association support offering clear & delete, and box-in-box support that can now create associations on publishing. This makes diagramming on the web a whole lot more capable.

It doesn't stop there...



Web Modeler goes next level:

- See Shape Regions live in Web Modeler
- Clear and Delete support for Objects and Associations
- Preview the Items that will be deleted on publishing
- Containment associations created when publishing
- Pictures supported for Palette templates
- Many other minor tweaks and enhancements

As well as significant improvements to Web Modeler, erwin Evolve 2020.1 introduces two new products:

- **New product: erwin Evolve Analytics Accelerator 2.**

Completely re-imagined from the ground up, Analytics Accelerator brings us *LIVE* BI reporting on your models.

No need to wait for that overnight batch job, your Analytics are continually refreshed, and there is more...

Not only can you run BI reports on the most up to date data, but you are now able to report on the history of your models too. Queries like, 'show me all the objects that changed in the last 3 months, who made the changes, and what were they' are easily within your grasp, using whichever* BI reporting tool you choose to use.

- **New product: erwin DM data import 2.**

Two years ago we brought data model import from erwin DM to Evolve, now we introduce the next generation of DM importing. Faster, more automated, and with better support for Evolve Web Platform. You can now keep your data models up to date in Evolve, and associate this with your Processes and Applications from the Web.

erwin Evolve 2020.1 also brings the following enhancements:

- **New Simple Grid view (evolve View)**

A new table type has been added that can be used in place of the Simple Table, which not only supports Server-side Jump and Merge, but also offers filtering and sorting for the end user.

- **erwin Evolve Web Platform Security Update.**

In keeping with the expected security of our platform, we bring the necessary updates and provide certification from our third-party testing team.

- **Less nagging when using temporary licenses**

Our temporary licenses now nag only when there are 15 days left on the clock. This removes the annoyance of clicking a warning on starting our applications, when the license has months to run.

- **Log messages are now much less busy**

Logging, now has a much tidier output when choosing the different levels. Most notably 'Info' is available, to provide all your analytics-based logs, but saving you from the 'Debug' level of detail. It is now much easier to see the wood for the trees, and the log files will not grow so fast. 'Debug' is still available, for when you really need it.

** BI tool must support SQL Server as a data source.*



*Note: Previous Release 2020.0.2 introduced some significant changes to file structure in the static website to facilitate authentication on a static site. If you are using scripts to migrate content from one server to another, **please visit the help here**, which will explain the new structure.*



Note: Previous Release 2020.0.2 no longer relies on IIS alone for the operation of a static site. This improvement to security, now requires the evolve engine to be active prior to a site being available for use. The result will be a slight delay to a static site being loaded, if the web server is asleep. This will only affect the first user to a site, if evolve is asleep, and it will force evolve to start. The delay will be comparable to that of the dynamic site..

Full list of enhancements and fixes

2020.1.0 Initial Build (181/356)	
RFA / Issue	Description
BUG	[Web Designer] [ZT111909] - Deletion of metadata being used by evolve no longer breaks Evolve Designer
BUG	[Web Modeler] Selecting an unsupported shape in Web Modeler causes diagramming to break
BUG	[Web Modeler] Accented characters now supported in web modeler's Object Name Search
BUG	[Web Modeler] Swimlane diagrams can now be edited if they contain pictures
BUG	[Web] [ZT113258] Diagram text justification now correct on vector diagrams that use default styles
BUG	[Web Modeler] Duplicate draft diagram now correctly uses the user diagram settings (eg show grid)
BUG	[Web Modeler] Integer properties correctly follow model validation
BUG	[Auth] ZT115258 SAML2 (SP initiated) now working correctly
BUG	[Web Modeler] [ZT114045] Web Modeler can now create same-name / different category diagrams
ENH	[Web] Evolve logging tidied and follows DEBUG/INFO/WARN/ERROR levelling more sensibly
ENH	[Suite] [Licensing] No-nags for CW temporary licensing licence - [ZT114792]
BUG	[Web Modeler] [ZT114044] Can now open diagrams when only a Version Control box exists

BUG	[Web] Object revision history now stays set to previous setting during an upgrade
BUG	[Web] [ZT113666] CW_USER record is again created for users logging in with CW Logon
BUG	[Web Modeler] [ZT112842] Deleted templates are now correctly removed when templates are published
BUG	[Evolve] [ZT113622] Custom Association Regions are now hidden correctly
BUG	[Suite] Count regions will not display correctly with association type
BUG	[Suite] Custom regions no longer show an error when set to 'show when exists'
ENH	[Web Modeler] Now supports the ability to clear or delete and shape/object from the diagram
ENH	[Web Modeler] Now supports the ability to clear or delete and association lines from the diagram
ENH	[Web Modeler] Now supports the ability to create associations for embedded shapes when publishing
ENH	[Web Modeler] Now has the ability to revert the deletion of an object prior to publishing
SEC	[Security] Several security fixes for SAST and DAST
BUG	[Web Modeler] Grid settings no longer need a refresh
BUG	[Web Modeler] Fixed an issue where the Save button was disabled when editing a newly named object

BUG	[Web Modeler] Can now create a diagram that only contains a Doc Block
BUG	[Global Search] Now supports more non-alphabetic character
BUG	[Web Designer] [ZT118815] Fixed Out of memory issue with Evolve Designer
SEC	[Suite] [ZT111106] Killbits now set for Actbar2.ocx during installation
BUG	[Web Designer] [ZT117366] Fixed warning when publishing templates, about duplicate templates, when there were none
ENH	[Web] New layout to show a simple grid (can be used in place of Simple Table), offers filtering and sorting
ENH	[Web Modeler] Regions are now supported, except navigation, explosion and association regions
ENH	[Web Modeler] Pictures are now supported off the palette
ENH	[CMI] Brand new CMI Analytics Accelerator provides live BI reporting database
BUG	[Web Modeler] Swimlane diagram, drop zone now shown if guide lines are turned on
ENH	[WebModeler] Change display name of shape to category if there a duplicates on the palette