



erwin Data Intelligence Suite

Release Notes

Release v10.2

Legal Notices

This Documentation, which includes embedded help systems and electronically distributed materials (hereinafter referred to as the “Documentation”), is for your informational purposes only and is subject to change or withdrawal by erwin Inc. at any time. This Documentation is proprietary information of erwin Inc. and may not be copied, transferred, reproduced, disclosed, modified or duplicated, in whole or in part, without the prior written consent of erwin Inc.

If you are a licensed user of the software product(s) addressed in the Documentation, you may print or otherwise make available a reasonable number of copies of the Documentation for internal use by you and your employees in connection with that software, provided that all erwin Inc. copyright notices and legends are affixed to each reproduced copy.

The right to print or otherwise make available copies of the Documentation is limited to the period during which the applicable license for such software remains in full force and effect. Should the license terminate for any reason, it is your responsibility to certify in writing to erwin Inc. that all copies and partial copies of the Documentation have been returned to erwin Inc. or destroyed.

TO THE EXTENT PERMITTED BY APPLICABLE LAW, ERWIN INC. PROVIDES THIS DOCUMENTATION “AS IS” WITHOUT WARRANTY OF ANY KIND, INCLUDING WITHOUT LIMITATION, ANY IMPLIED WARRANTIES OF MERCHANTABILITY, FITNESS FOR A PARTICULAR PURPOSE, OR NONINFRINGEMENT. IN NO EVENT WILL ERWIN INC. BE LIABLE TO YOU OR ANY THIRD PARTY FOR ANY LOSS OR DAMAGE, DIRECT OR INDIRECT, FROM THE USE OF THIS DOCUMENTATION, INCLUDING WITHOUT LIMITATION, LOST PROFITS, LOST INVESTMENT, BUSINESS INTERRUPTION, GOODWILL, OR LOST DATA, EVEN IF ERWIN INC. IS EXPRESSLY ADVISED IN ADVANCE OF THE POSSIBILITY OF SUCH LOSS OR DAMAGE.

The use of any software product referenced in the Documentation is governed by the applicable license agreement and such license agreement is not modified in any way by the terms of this notice.

The manufacturer of this Documentation is erwin Inc.

Provided with “Restricted Rights.” Use, duplication or disclosure by the United States Government is subject to the restrictions set forth in FAR Sections 12.212, 52.227-14, and

52.227-19(c)(1) - (2) and DFARS Section 252.227-7014(b)(3), as applicable, or their successors.

Copyright © 2020 erwin Inc. All rights reserved. All trademarks, trade names, service marks, and logos referenced herein belong to their respective companies.

Contact erwin

Understanding your Support

Review [support maintenance programs and offerings](#).

Registering for Support

Access the [erwin support](#) site and click Sign in to register for product support.

Accessing Technical Support

For your convenience, erwin provides easy access to "One Stop" support for [erwin Data Intelligence Suite \(DI Suite\)](#), and includes the following:

- Online and telephone contact information for technical assistance and customer services
- Information about user communities and forums
- Product and documentation downloads
- erwin Support policies and guidelines
- Other helpful resources appropriate for your product

For information about other erwin products, visit <http://erwin.com/>.

Provide Feedback

If you have comments or questions, or feedback about erwin product documentation, you can send a message to distechpubs@erwin.com.

erwin Data Modeler News and Events

Visit www.erwin.com to get up-to-date news, announcements, and events. View video demos and read up on customer success stories and articles by industry experts.

Contents

Legal Notices	2
Contents	5
What's New	6
Intelligent Asset Sensitivity Classification	6
Improved Sensitive Data Dashboard	7
Enhanced Lineage Analyzer	8
Improved Mind Map Features	9
AIMatch Engine	10
Intelligent User Onboarding	10
Move Business Terms	11
DM Connect for DI	12
Enhancements	13

What's New

The latest erwin Data Intelligence Suite (DI Suite) version, v10.1, has the following new features:

[Intelligent Asset Sensitivity Classification](#)

[Improved Sensitive Data Dashboard](#)

[Enhanced Data Lineage Analyzer](#)

[Improved Mind Map](#)

[AIMatch Engine](#)

[Interactive User Onboarding](#)

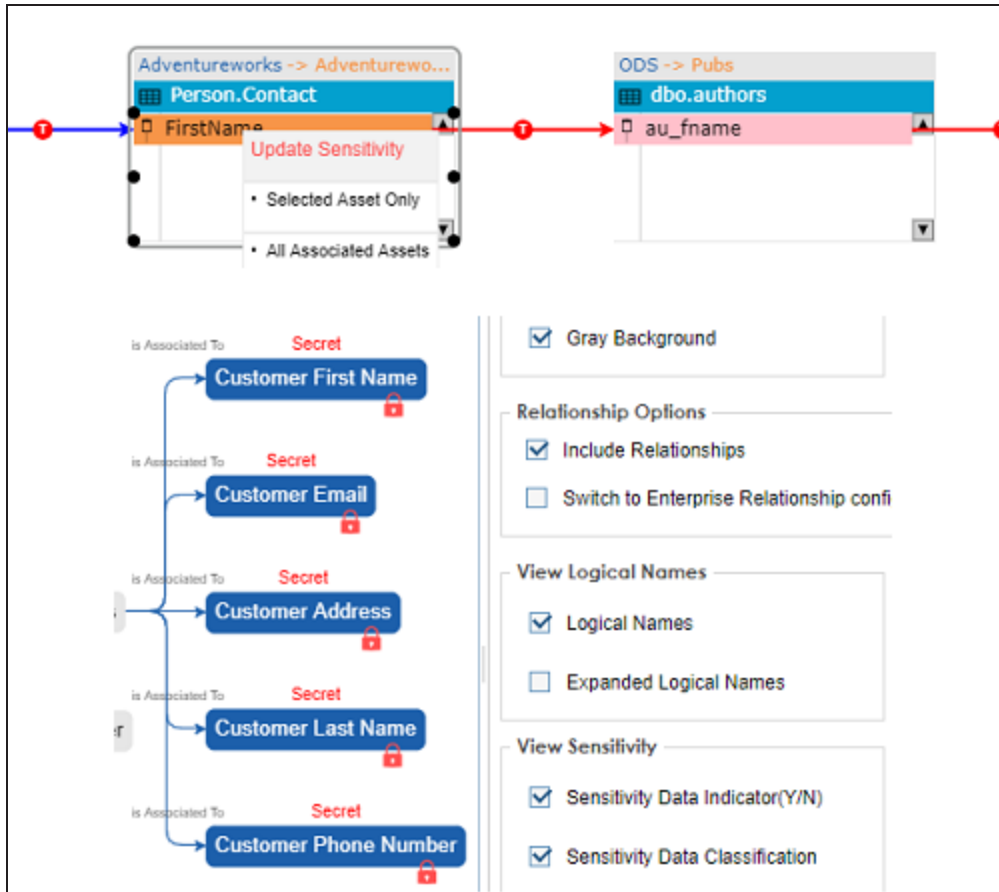
[Move Business Terms](#)

[DM Connect for DI](#)

Intelligent Asset Sensitivity Classification

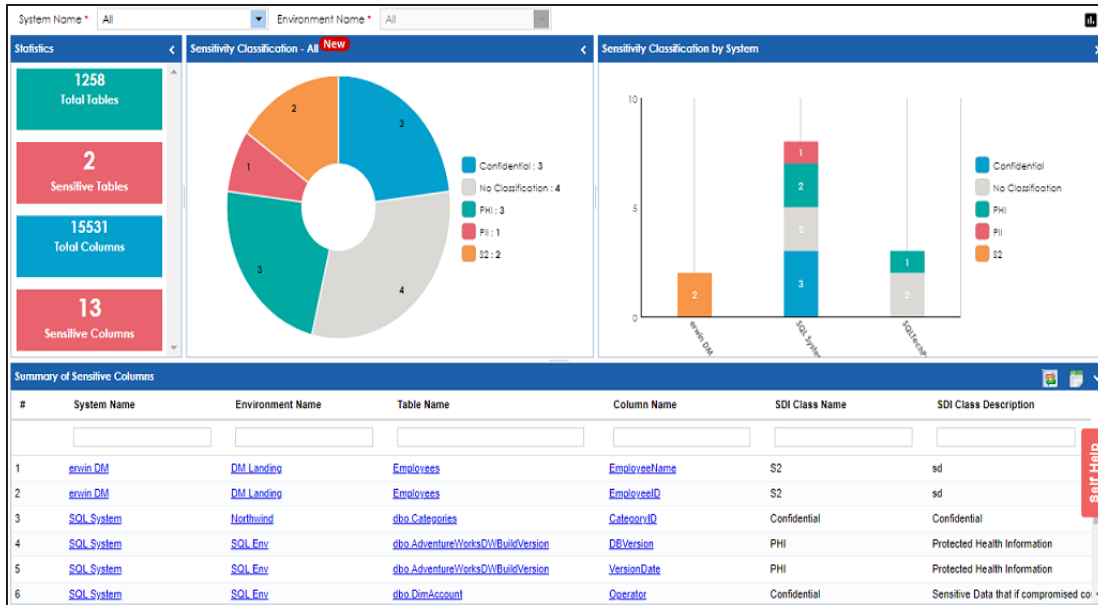
Intelligent asset sensitivity classification enables you to:

- Classify assets at the environment or schema level using the Update Sensitivity option in the [Metadata Manager](#) and [Business Glossary Manager](#).
- Trace assets via [data lineage](#), and classify them and the related assets through the lineage.
- Trace assets via [mind map](#), and classify them and the related assets through the mind map.



Improved Sensitive Data Dashboard

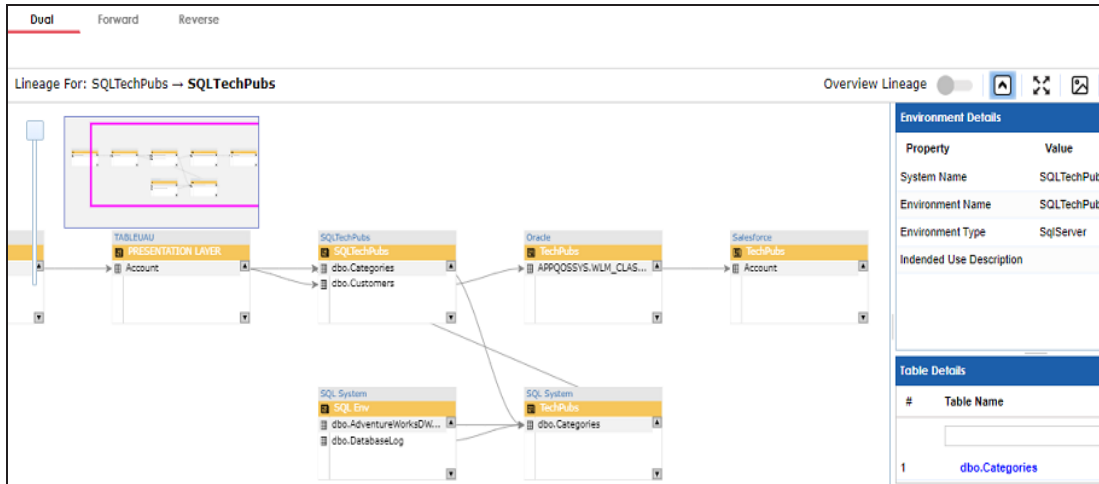
The [Sensitive Data dashboard](#) in Metadata Manager has been enhanced with click-able graphs to drill down and view classified attributes by classification type, or system or environment.



Enhanced Lineage Analyzer

The lineage analyzer in [Mapping Manager](#) and [Metadata Manager](#) has been revamped to provide:

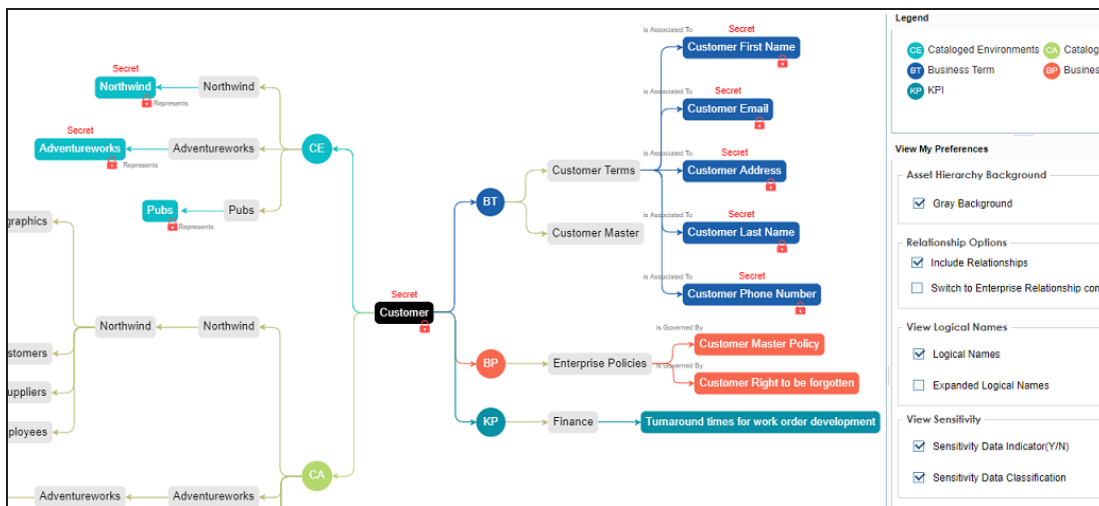
- A grouped view of tables and columns at system and environment level.
- Both, high-level business view and deeper technical view of lineage.
- Table and column lineages on a single page without running the lineage analyzer again.
- Traceability on hovering assets to facilitate analysis of the lineage.
- Ability to click and blur non-connected paths for analysis of large data sets.



Improved Mind Map Features

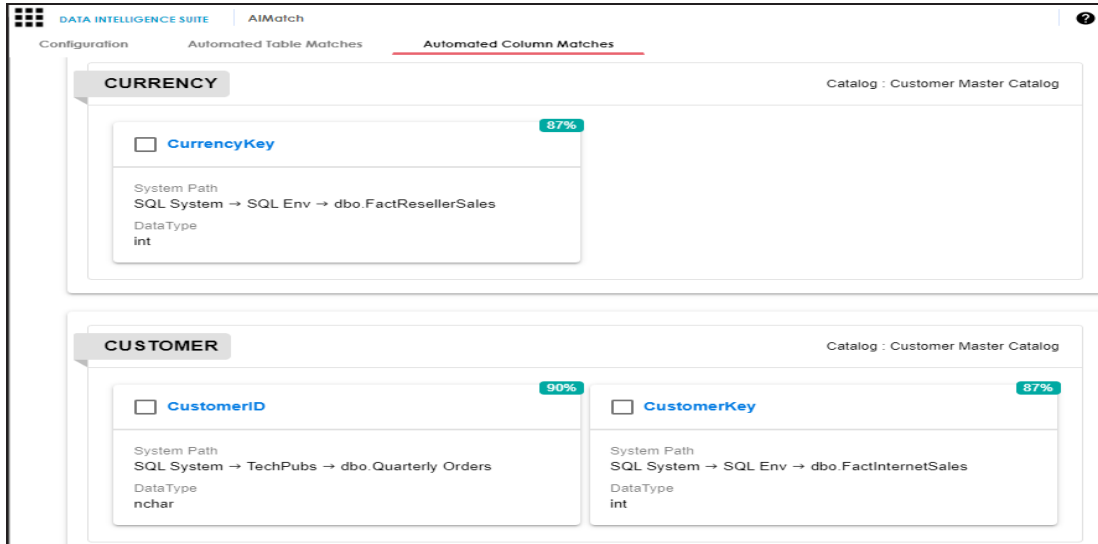
The mind map has been enhanced to display all associations and relationships between assets in a dynamic layout. The [new mind map](#) lets you:

- View and update sensitivity classification of technical and business assets.
- View logical and expanded logical names of tables and columns.
- Personalize and set up preferences about information availability on the mind map.



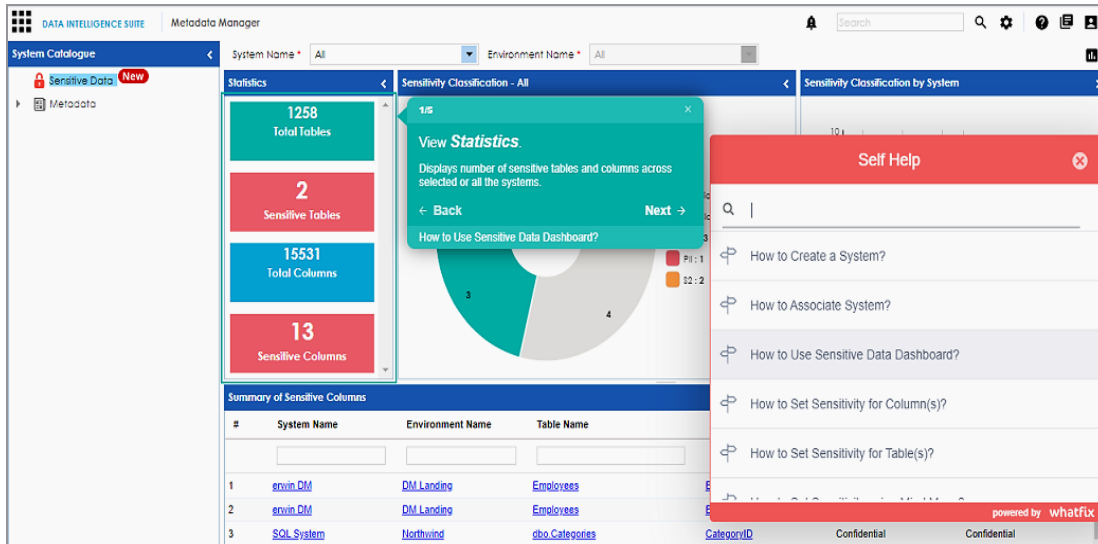
AIMatch Engine

erwin DI Suite now offers an AIMatch Engine that automatically finds and suggests technical asset matches for business terms. You can then select and associate technical assets and business terms based on the match score.



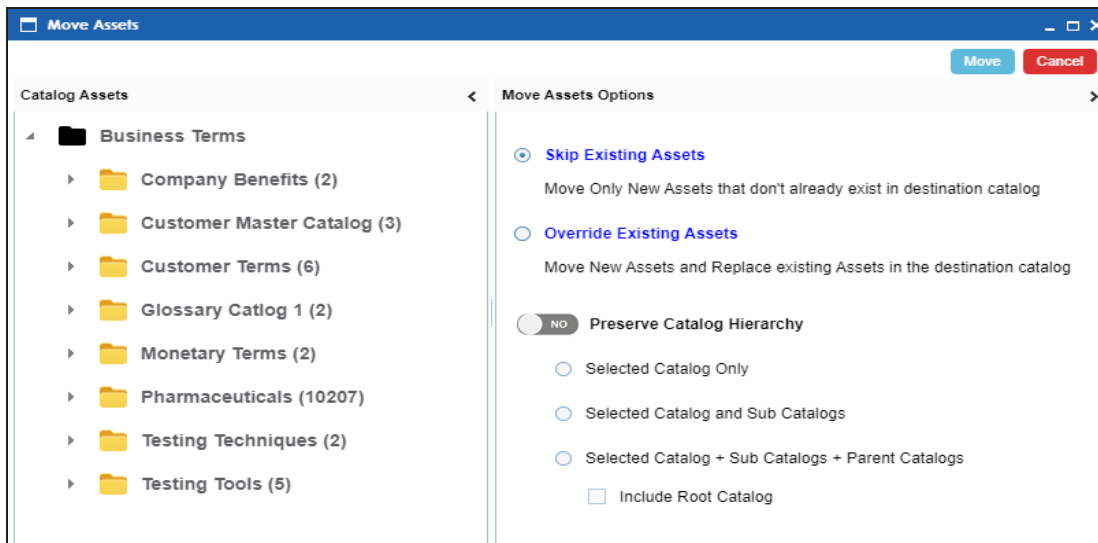
Intelligent User Onboarding

erwin DI Suite now offers quick start tutorials and in-app self-help in the form of interactive walkthroughs, field tips, and videos. To access these tutorials, click **Self Help** in your erwin DI Suite application.



Move Business Terms

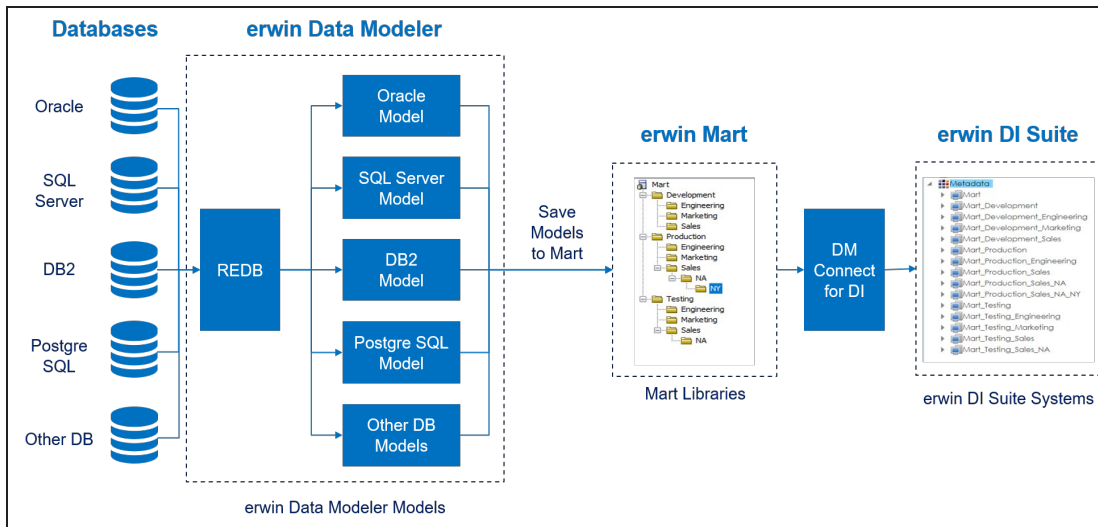
erwin DI Suite now lets you move Business Terms between catalogs or sub-catalogs. You can choose to move only business terms or preserve their hierarchy while moving.



DM Connect for DI

erwin now offers an integration, [DM Connect for DI](#), between erwin Data Modeler (DM) and erwin Data Intelligence Suite (DI Suite). This offering enables you to:

- Sync data modeler assets (physical and logical models, data sources, and naming standards) with erwin DI Suite, thus, maintaining a single metadata, mapping, and glossary source.
- Set up schedules to automatically harvest data models periodically.



Enhancements

Apart from the new features, following enhancements have been made:

- A rich text editor has been added to the [Extended Properties](#) tab.
- Schema-level node has been added for databases in the Metadata Manager.