

Quest® Migrator for Notes to Exchange 4.16.1
Quick-Start Guide



© 2020 Quest Software Inc.

ALL RIGHTS RESERVED.

This guide contains proprietary information protected by copyright. The software described in this guide is furnished under a software license or nondisclosure agreement. This software may be used or copied only in accordance with the terms of the applicable agreement. No part of this guide may be reproduced or transmitted in any form or by any means, electronic or mechanical, including photocopying and recording for any purpose other than the purchaser's personal use without the written permission of Quest Software Inc.

The information in this document is provided in connection with Quest Software products. No license, express or implied, by estoppel or otherwise, to any intellectual property right is granted by this document or in connection with the sale of Quest Software products. EXCEPT AS SET FORTH IN THE TERMS AND CONDITIONS AS SPECIFIED IN THE LICENSE AGREEMENT FOR THIS PRODUCT, QUEST SOFTWARE ASSUMES NO LIABILITY WHATSOEVER AND DISCLAIMS ANY EXPRESS, IMPLIED OR STATUTORY WARRANTY RELATING TO ITS PRODUCTS INCLUDING, BUT NOT LIMITED TO, THE IMPLIED WARRANTY OF MERCHANTABILITY, FITNESS FOR A PARTICULAR PURPOSE, OR NON-INFRINGEMENT. IN NO EVENT SHALL QUEST SOFTWARE BE LIABLE FOR ANY DIRECT, INDIRECT, CONSEQUENTIAL, PUNITIVE, SPECIAL OR INCIDENTAL DAMAGES (INCLUDING, WITHOUT LIMITATION, DAMAGES FOR LOSS OF PROFITS, BUSINESS INTERRUPTION OR LOSS OF INFORMATION) ARISING OUT OF THE USE OR INABILITY TO USE THIS DOCUMENT, EVEN IF QUEST SOFTWARE HAS BEEN ADVISED OF THE POSSIBILITY OF SUCH DAMAGES. Quest Software makes no representations or warranties with respect to the accuracy or completeness of the contents of this document and reserves the right to make changes to specifications and product descriptions at any time without notice. Quest Software does not make any commitment to update the information contained in this document.

If you have any questions regarding your potential use of this material, contact:

Quest Software Inc.
Attn: LEGAL Dept.
4 Polaris Way
Aliso Viejo, CA 92656

Refer to our website (www.quest.com) for regional and international office information.


Patents

Quest Software is proud of our advanced technology. Patents and pending patents may apply to this product. For the most current information about applicable patents for this product, please visit our website at www.quest.com/legal.

Trademarks

Quest and the Quest logo are trademarks and registered trademarks of Quest Software Inc. in the U.S.A. and other countries. For a complete list of Quest Software trademarks, please visit our website at www.quest.com/legal. *Microsoft*, *Windows*, *Outlook* and *Active Directory* are registered trademarks of Microsoft Corporation in the United States and other countries. *Office 365* is a trademark of Microsoft Corporation in the United States and other countries. *Domino* is a registered trademark of International Business Machines Corporation, registered in many jurisdictions worldwide. All other trademarks, servicemarks, registered trademarks, and registered servicemarks are the property of their respective owners.

Legend

 **CAUTION:** A CAUTION icon indicates potential damage to hardware or loss of data if instructions are not followed.

 **IMPORTANT NOTE, NOTE, TIP, MOBILE, or VIDEO:** An information icon indicates supporting information.

Contents

About the MNE Documentation	4
About this Quick Start Guide	4
About the MNE documentation suite	4
Other sources of information	5
Product overview	6
The problems of migration	6
The solution: Migrator for Notes to Exchange	7
Product components	7
Getting started	10
Upgrade considerations	10
Installing Migrator for Notes to Exchange	10
Licensing Migrator for Notes to Exchange	11
Running Migrator for Notes to Exchange	12
Post-installation tasks	12
Uninstalling Migrator for Notes to Exchange	13
Conceptual walkthrough	14
Migration process overview	16
Necessary pre-migration preparations	16
Migration process (per user collection)	18
Post-migration cleanup	19
About us	20
Technical support resources	20

About the MNE Documentation

- [About this Quick Start Guide](#)
- [About the MNE documentation suite](#)
- [Other sources of information](#)

About this Quick Start Guide

This Quick-Start Guide has been prepared to get you started with Migrator for Notes to Exchange (MNE)—to orient you to its basic purposes and features, and to help you install it. This Guide also presents a brief narrative case study to illustrate how MNE components are most typically used within the broader context of an overall migration project. The Quick-Start Guide is written for network administrators, consultants, analysts, and any other IT professionals who will install the product, use its administrative tools, or contribute to migration project planning.

About the MNE documentation suite

This *Quick-Start Guide* is one of several documents that explain various aspects of the Quest Migrator for Notes to Exchange product. The complete documentation suite includes:

- **Quick-Start Guide:** An orientation to MNE's basic purposes, components and features, with a case study to illustrate typical usage. Also includes instructions for downloading and installing the software.
- **Pre-Migration Planning Guide:** A checklist of strategic and tactical issues that an organization must consider and accommodate before beginning a migration project. An appendix also documents known limitations of the migration process.
- **Scenarios Guide:** Descriptions of the most common migration scenarios—migrating to different target environments and for an array of other variables and preferences—with process instructions and flow charts that explain how to use MNE tools and features in each scenario.
- **Administration Guide:** Operational details, application notes and screen-by-screen field notes for the administrator components of MNE.
- **Self-Service Desktop Migrator User Guide:** Operating instructions, application notes and screen-by-screen field notes for the Self-Service Desktop Migrator (SSDM) component of MNE. The *SSDM User Guide* is provided as a separate PDF document so that an administrator can distribute it to the end users who will run the per-desktop program.
- **Program Parameters Reference:** A listing of all MNE program parameters and the valid values in the Task Parameters and Global Defaults, and how to use the parameters to control various program behaviors.
- **Online Help:** Context-sensitive field definitions and application notes for all of the MNE wizards and other component applications.

All these documents except the *SSDM User Guide* are intended for network administrators, consultants, analysts, and any IT professionals who will install the product, use its administrative tools, or contribute to migration project planning. Generally speaking, the *Pre-Migration Planning Guide* and *Scenarios Guide* present a more conceptual view of the product, while the *Administration Guide* provides the hands-on, screen-by-screen descriptions and field notes. The *SSDM User Guide* is intended for end users or administrators who will use the Self-Service Desktop Migrator component.



NOTE: Quest recommends that all administrators read all the *Quick-Start Guide* and *Pre-Migration Planning Guide* (in that order), and the first chapter of the *Scenarios Guide*. You can use that information to prepare a detailed written Migration Plan before attempting the migration process. When you are ready to begin the migration process, you may refer as needed to the process instructions and notes in the *Scenarios Guide*, and the operational details in the *Administration Guide*.

Other sources of information

Visit our *Quest* online communities

The *Quest Communities* web site is an interactive online community dedicated to issues relating to:

- Migration of email, identity and applications to the Windows Exchange platform, either on-premises or hosted Exchange platforms like Office 365—including migrations from Exchange, GroupWise, and Notes.
- Active Directory migrations.
- Migrations from Notes application and Exchange public folders to SharePoint.
- Coexistence strategies and tools.

The community is designed to foster collaboration between Quest Migration experts and users. It is a place where you can:

- Learn about product releases and betas before anyone else.
- Get access to Quest product leaders and subject matter experts on migration and coexistence.
- Participate in discussion forums, share insights and ideas, and get common questions answered.

You can browse around the forums and the library, but to take full advantage of the community, post new threads, respond to messages from others, and rate our documents and downloads, you must *Join* the community. If you already have a Quest account or are a member of another Quest community, *Sign in*. The *Sign in* and *Join* features are both available from links near the top-right corner of the page at the [Quest Communities](#) web site.

Product overview

- [The problems of migration](#)
- [The solution: Migrator for Notes to Exchange](#)
- [Product components](#)

The problems of migration

While the benefits of migrating from Notes to Microsoft Exchange are understood, the migration itself is a complex process that requires careful planning and project management. A high-level summary checklist of necessary tasks can be quite long, and will expose a good number of details that must be addressed for a successful migration. The sequence, timing, and coordination of tasks is also important.

A few products and services are available to help organizations with various pieces of the migration puzzle, but the best solution would be a single coordinated toolkit to provide a comprehensive, project-scale approach to overall migration planning, management, and execution. The component tools and the package as a whole would be versatile enough to accomplish a wide range of migration strategies, all of which must accommodate these critical project objectives:

- **Preservation of valuable information stored on the Notes system**, including mail, attachments, calendar appointments, tasks, and so on stored on the server, and information such as address books and local stores. Ideally data on the Domino server should be moved to the Exchange server, while Notes local stores should be moved to desktops in Outlook personal storage (.pst) format. To minimize help desk calls, the migration should have high fidelity and all messages should be reply-able at all times during and after the migration project.
- **Minimal user involvement in the migration project**. Users are likely getting a new mail client (Outlook) and will need training. But administrators should be able to perform the migration project with minimal end-user involvement.
- **Provisioning of user accounts and distribution lists into Active Directory**. The Quest Coexistence Manager for Notes (CMN) Directory Connector can create mail-enabled security objects in Active Directory for all Notes users but cannot create Exchange mailboxes, and cannot move Notes public distribution lists into Active Directory. It is also important that any Internet mail aliases (nicknames) that worked on the Notes system be supported on Exchange.
- **Coexistence of the two systems during migration** (for medium and large enterprises). Small companies may choose to migrate all users together as a single group to avoid having to support coexistence between the Domino and Exchange directories through the transition period. However, most medium and large companies (more than 400 users) will need to provide for some level of coexistence. Users should be able to send mail and schedule meetings with one another without having to know the migration status of other users.
- **Support for a variety of migration target types and other scenario factors**. Are you migrating to a local Active Directory, or to the cloud? Do you already have a local AD up and running? Do you want to consider an "offline" or "phased" migration strategy?

The solution: Migrator for Notes to Exchange

Quest Migrator for Notes to Exchange (MNE) is a set of coordinated software applications that facilitate a variety of migration strategies for organizations moving from a Domino server with Notes clients, to a Microsoft Exchange environment with Outlook clients. MNE can migrate to a proprietary Exchange environment or to a hosted Exchange service such as Microsoft Office 365 (Exchange Online).

The Quest tools are designed to complement other deployment and coexistence tools to deliver comprehensive, integrated solutions to the challenges of a Notes-to-Exchange migration:

- **Migration of server data:** MNE migrates mail, appointments, tasks and personal address books from the Notes environment, and lets you specify the destinations for different data types, either to the Exchange server or to Outlook personal folders (.pst) files.
- **Migration of Notes archives:** MNE can migrate archives from either a central file server or user desktops, to either Outlook .pst files or the Exchange server.
- **User involvement:** MNE lets an administrator migrate most, or even all, user data with no user involvement. In a typical migration scenario, all user data is migrated in batches by an administrator—dozens of users at a time, over a series of migration runs.
- **Provisioning:** MNE extracts user data from the Domino server to mailbox-enabled user accounts in Active Directory as users are migrated. MNE creates mailboxes for the mail-enabled security objects that were created earlier by the Quest CMN Directory Connector or some other method. The migration program also copies the user Notes addresses and any Notes aliases into AD, and provisions Notes personal distribution lists directly into Active Directory.
- **Coexistence:** MNE offers dynamic mail forwarding features that automatically set, update, and remove mail-forwarding rules in user mailboxes on both servers, to assure correct mail routing throughout the transition period. While other applications can synchronize the two directories, the MNE Directory Export Wizard can update the data files that the MNE migration applications use to migrate data and convert addresses.
- **Support for diverse array of scenarios:** MNE can migrate to local Exchange or to Office 365 or other “hosted” Exchange targets, and can provision directly to a local AD or directly from the source Notes/Domino environment to Office 365. MNE includes a special utility that can pool Office 365 administrator accounts to dramatically improve overall throughput to Office 365. And MNE also supports offline and phased migration strategies.

Migrator for Notes to Exchange, together with Microsoft deployment tools and Quest Coexistence Manager for Notes, can perform or facilitate every administrative task associated with a Notes-to-Exchange migration. (Coexistence Manager for Notes is a separate Quest product—see the *Coexistence* topic in the *MNE Pre-Migration Planning Guide* for more information.) All MNE components support operational options that allow great flexibility in devising and implementing a suitable migration strategy to suit most any network configuration, circumstances and preferences.

Meanwhile, the accompanying Quest MNE documentation provides a truly project-scale approach to migration planning and management, with a comprehensive, broad-context checklist of strategic planning topics, and broad-context process instructions that explain how the Quest tools fit into the overall process flow of a variety of migration scenarios.

Product components

All the features of Migrator for Notes to Exchange are contained within these primary components:

- **Notes Migration Manager:** The central console application that coordinates most administrator-driven tasks and features. The Notes Migration Manager contains an assortment of specialized component applications, called wizards (described in the following text), to facilitate particular program features. In addition to its wizards, the Notes Migration Manager helps you monitor and manage most of the information

pertaining to a migration project: program defaults and server access credentials, the locations of Notes source data, exported Domino data, and migration statistics that track the status of a migration project.

- **Notes Migration Scheduling Application:** A separate command-line application that executes scheduled tasks. The program checks the SQL Server database to see whether any tasks have been scheduled to run since the last check, and executes any such tasks.
- **Office 365 Account Pooling Utility:** A utility that helps a migration administrator manage a pooled collection of Office 365 administrator accounts to handle Microsoft-imposed throttling limits that dramatically slow data transmissions to Office 365. Since the Microsoft throttling limitations are applied per admin account, this utility coordinates multiple admin accounts to run simultaneously, to multiply the throttled throughput rate by the number of accounts in the pool.
- **Self-Service Desktop Migrator (SSDM):** A separate application that end users can run (one user at a time) to migrate their own mail, PABs and archives. (An administrator may also run this Desktop Migrator on behalf of an end user, running under the user's credentials.)

The SSDM user interface is available in English and French. The *SSDM User Guide* is available in English, French and Japanese. By default, the SSDM interface and help are displayed in the language specified in the operating system settings (language and locale). You can use the `DisplayLanguage` parameter to specify a language.

- **SSDM Scheduling Administration Utility:** A utility that lets an administrator regulate end users' execution of the Self-Service Desktop Migrator (SSDM) to avoid processing bottlenecks that might occur if too many users tried to use the SSDM simultaneously.
- **Log File Viewer:** Simplifies the viewing and interpretation of program log files, which are generated by most MNE components to document process errors and warnings.

The wizards that can be launched from *Notes Migration Manager*:

- **NABs Discovery Wizard:** Searches the Notes/Domino server to locate all Notes NABs (Name and Address Books). The Directory Export Wizard and Internet Domains Discovery Wizard extract critical directory information from the NABs, which are read by the MNE provisioning and migration wizards so they can perform their tasks.
- **Internet Domains Discovery Wizard:** Extracts all Internet domains it finds within the Notes NABs (Name and Address Books) that were found by the NABs Discovery Wizard. These domains are used to generate address aliases for all users so that Exchange can recognize and correctly route mail sent to users' old addresses.
- **Directory Export Wizard:** Gathers user information from the Domino servers to create SQL Server data tables that provide critical input data to the MNE provisioning and migration wizards. You can have the wizard to perform the export task immediately following its configuration, or the you can schedule the task to run at a later time.
- **Collection Wizard:** Lets you define the members of user and group collections. Provisioning, migration, and other features are applied to collections of users and groups, and the Collection Wizard defines these collections. You can add members to a collection by selecting objects from the SQL Server database, or by importing the contents of a .tsv (tab-separated-values format) file, or both.
- **Groups Provisioning Wizard:** Defines a task that provisions distribution groups (create group objects) to Active Directory or Office 365 from a designated group collection, and schedules the task to run at a particular time, or at a series of recurring times.
- **Notes Data Locator Wizard:** Defines a task that locates data files in the Notes source for a specific user collection, or gathers statistics from previously located data stores, and schedules the task to run at a particular time or at a series of recurring times.
- **Provisioning Wizard:** Provisions objects into Active Directory, and consolidates any duplicate AD objects by merging information from Exchange contacts (generated by a directory synchronization) into corresponding users' AD accounts, and deletes the contacts, to create a single mail-enabled security object per user in AD. (In a typical coexistence strategy, the Quest CMN Directory Connector generates Exchange contacts when updating directories.)
- **Send PAB Replicator Wizard:** Sends a special email form to users within a user collection that lets them copy all their PABs (personal address books) to a centralized Notes server directory, where the Data Migration Wizard can find them and migrate them.

- **Data Migration Wizard:** Defines a task that can, for users within a user collection:
 - Mailbox-enable Exchange accounts.
 - Migrate user data.
 - Update mail-forwarding rules.
 - Perform other related Notes and Exchange administrative functions.

MNE copies data from Notes as Unicode and inserts it into Exchange as Unicode. Any data that has a specific character set (MIME data) in the Notes source retains that character set after migration; the migration features do not convert MIME data into Unicode.

- **Self-Service Desktop Migration Statistics Collection Wizard:** Gathers migration statistics written by the MNE Self-Service Desktop Migrator (SSDM) and loads the data into the SQL Server database to help you track the progress of the migration project. The wizard can perform the data-gathering task immediately following its configuration, or you can schedule the task to run at a later time.

Getting started

- [Upgrade considerations](#)
- [Installing Migrator for Notes to Exchange](#)
- [Licensing Migrator for Notes to Exchange](#)
- [Running Migrator for Notes to Exchange](#)
- [Post-installation tasks](#)
- [Uninstalling Migrator for Notes to Exchange](#)

Upgrade considerations

There is no need to remove a previous version before installing a new version. An MNE upgrade installation and setup are fully automated, and preserves any data already migrated by an earlier version so that you can resume the migration process from wherever you left off with the previous version.

i | **IMPORTANT:** The upgrade process backs up your existing *pabreplicator.nsf*, *attrs.tsv*, *msgtypes.tsv*, *NMEPSErrorFile.xml*, *wte_template.htm*, *ybm_template.htm* and *ynma_template.html* files and copies them to the target installation folder.

Installing Migrator for Notes to Exchange

i | **NOTE:** During the installation of Migrator for Notes to Exchange, you have the option to run the Prerequisite Checker (step 7). To run this utility, the account used to log in to the migration server must be a member of the Microsoft Organization Management role group.

To install Migrator for Notes to Exchange

- 1 Download the *Migrator for Notes to Exchange* self-extracting executable (.exe) file from the Quest.com website and copy the file into an installation folder. Double-click the file to extract the contents.
- 2 Double-click on *Autorun.exe* to start the Autorun utility.
You might instead insert an MNE product CD, which runs the Autorun utility automatically.
The Autorun utility is launched where you can browse product information including the **Prerequisites** and all MNE **Documentation** before installing the product.
- 3 Verify that your environment conforms to the system requirements specified in the MNE *Release Notes*, and the Configuration requirements and account permissions specified in chapter 1 of the *Pre-Migration Planning Guide*. Several of the required third-party components can be downloaded from links on the Autorun **Prerequisites** tab.
- 4 When you are ready to install, select the Autorun **Install** tab.
- 5 Select the *Migrator for Notes to Exchange* product name and click **Next**.

6 Read and accept the license agreement.

7 Follow the instructions in the MNE *Installation Wizard*.

i | **NOTE:** If your setup includes the Microsoft redistributables, you can install them on your migration server. You must have a Microsoft SQL Server installed in your migration environment in order to use Quest Migrator for Notes to Exchange.

i | **NOTE:** Quest MNE requires access to the Microsoft OLE DB Driver for SQL Server (MSOLEDBSQL). If you have the Microsoft OLE DB Driver for SQL Server 18.2 or later installed on your migration server you have met the requirement.
If you do not have the Microsoft OLE DB Driver installed, you can click **Download** in the Autorun utility to download the software.

8 Follow the remaining instructions and prompts in the MNE Installer.

i | **NOTE:** MNE includes a wizard for scanning the environment and determining whether it conforms to the system requirements for the MNE applications. The MNE Prerequisites Checker looks for required software and settings, connectivity, permissions, and access rights. You can launch the wizard from the exit page of the MNE installer by selecting the **Launch the Prerequisites Checker when setup exits** check box before you click **Finish**:

You can also run the checker independently from your Windows *Start* menu, in the Quest | Migrator for Notes to Exchange group. The Prerequisites Checker log file is located at the following path:
%SystemDrive%\ProgramData\Quest\Prerequisites Checker.

9 Click **Finish** to complete the installation.

The MNE Installer exits, and returns you to the Autorun utility on the **Install** tab. If you have selected the Prerequisites Checker check box, that wizard runs (in a separate window).

10 If you like, you may browse the other Autorun tabs.

11 When you are finished browsing other Autorun tabs, click the **Close** box (**[X]** in the top-right corner) to close the Autorun utility.

12 If you plan to use the optional MNE task scheduling features, make sure the MNE Task Scheduler is configured by following the instructions in Appendix A of the *MNE Administration Guide*, in the “How Do I Schedule Tasks?” section.

See [Licensing Migrator for Notes to Exchange](#) before trying to configure or run any MNE component.

i | **NOTE: Locale-specific configuration:** If you are migrating from a non-English Notes environment, you must also configure both the Data Migration Wizard and the SSDM with the appropriate non-English values for certain display elements. See Appendix A of the *Administration Guide* for instructions, under “How Do I Configure MNE for My Non-English Notes Locales?”

Licensing Migrator for Notes to Exchange

Migrator for Notes to Exchange is a metered-use product that requires the application of a valid license key. An MNE license key is installed the MNE Notes Migration Manager component.

Quest sells license keys for specific numbers of users to be migrated. When the limit is reached the software continues to function normally for users that are already migrated, but will not migrate additional users. The same license is used for all functions of a particular user (provisioning, forwarding, migration, etc.) and the user license count increments the first time any program function is applied to each user. When any feature of an MNE component is applied to a user, all features of all components can be applied to the same user under the same license. Moreover, users can be re-migrated (if necessary) using the original licenses. Re-migration does not require an additional license.

A trial license is intended to let you try the MNE software in your own environment with your own data to determine whether the MNE capabilities suit your needs. Under a trial license the program stamps a “MIGRATION EVALUATION” prefix into the *Subject* of every migrated message, and also imposes the following limitations:

- Calendar items more than two weeks into the future are not migrated.
- When migrating personal address books, only five contacts and five groups are migrated per PAB.

You can obtain your first or a subsequent license key by contacting a Quest Software sales representative. For either a trial or perpetual license, the key takes the form of a file *NotesEX_4-###-#####.dlv* (where *###-#####* represents your unique license number), sent to you from Quest Licensing as an email file attachment. Copy the license key file to your Desktop, or to some other convenient location.

The product will install without a license key, but will prompt you to apply a license key the first time you try to run the software. You will be prompted to find and specify the license key file that Quest provided. Use the **Browse** feature to locate and specify the .dlv license file.

If you are upgrading from an earlier version, the automated upgrade process will transfer the existing license key into the new version, so you do not need to re-install it. For new installations, the license installer will only install the new format license files (.dlv). The older format (.asc) is no longer supported.

! | **IMPORTANT:** Many environments require disabling User Account Control (UAC) to install the Quest license into MNE.

Running Migrator for Notes to Exchange

When you launch the Notes Migration Manager, Migrator for Notes to Exchange checks to see if an MNE database connection exists on your migration server. If a connection does not exist, you must establish the database connection.

To start Quest Migrator for Notes to Exchange:

- 1 To launch Notes Migration Manager from the Start menu, select **All Programs | Quest | Migrator for Notes to Exchange | Migration Manager**.
- 2 Enter your SQL credentials as prompted and click **Apply**.

If the Migrator for Notes to Exchange database is not found on the SQL Server that you specified, you are prompted to install the required database tables on your SQL Server. If you have selected the correct SQL Server, click **OK** to populate your SQL Server with the required database tables.

Post-installation tasks

Migrator for Notes to Exchange uses directories that must have certain permissions assigned to them. Before running the discovery, provisioning, and migration tasks, you must create the required directories. The directories must be shared with the following permissions:

- **Bulk Import directory:** A directory from which the SQL Server can read and write.
- **Administrator log directory:** A directory from which the administrative tools (*Migration Manager* and wizards) can read and write.
- **Common application directory:** A directory in which components and data common to the MNE tools and SSDM are stored. The migration administrator must be able to write and read to this directory while access for all non-administrator (SSDM) users should be set to read only.

- **Desktop migration logs directory** (optional): A directory for collecting logs from desktop migration runs when users run the Self-Service Desktop Migrator (SSDM) to migrate local data stores and encrypted data. Users running the SSDM will need write access to the directory in to post the results of their migrations.

Uninstalling Migrator for Notes to Exchange

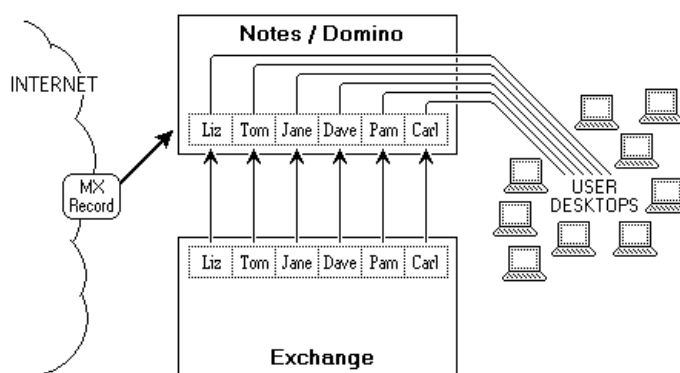
To uninstall Migrator for Notes to Exchange:

- 1 From your Windows **Start** button, select **Settings | Control Panel**.
- 2 Click **Programs and Features**.
- 3 Select **Migrator for Notes to Exchange** and click **Uninstall**.

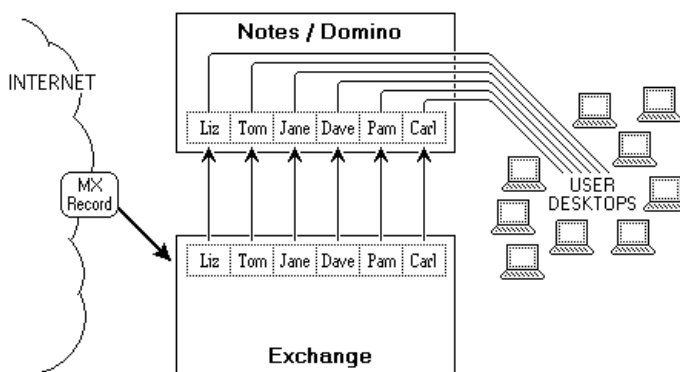
Conceptual walkthrough

Migrator for Notes to Exchange supports a wide range of migration scenarios, but this high-level walkthrough is representative of a typical migration, showing the interplay of provisioning, mail routing, and data transfers over the course of a multi-batch migration.

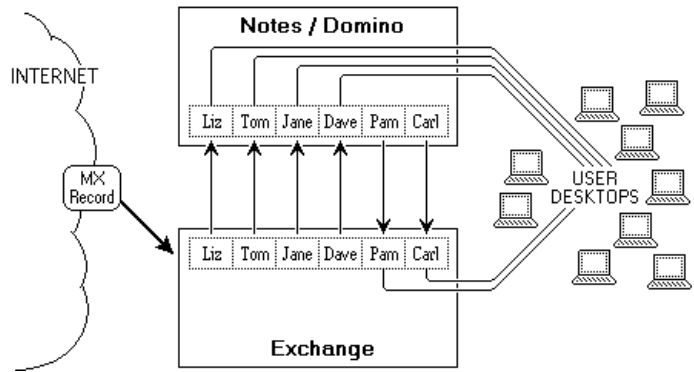
A directory update by the Quest CMN Directory Connector (or some other method) extracts data from the Domino directory to create mail-enabled user accounts (contacts) in Active Directory— although Exchange user mailboxes are not yet created. User records in AD contain the user current Notes addresses, so ...



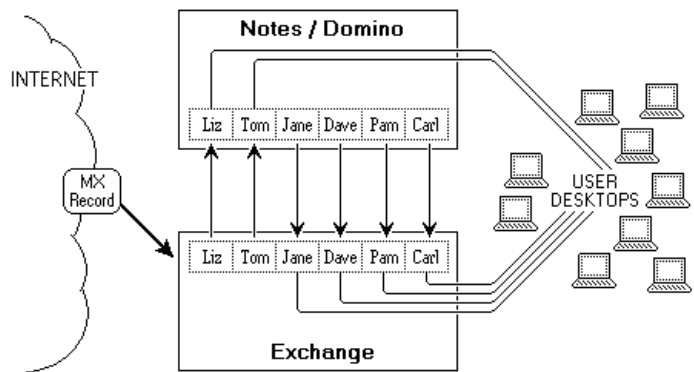
... Exchange can route Internet mail to user Notes mailboxes when you change the MX record to direct inbound mail to the new Exchange server — before the first users are migrated.



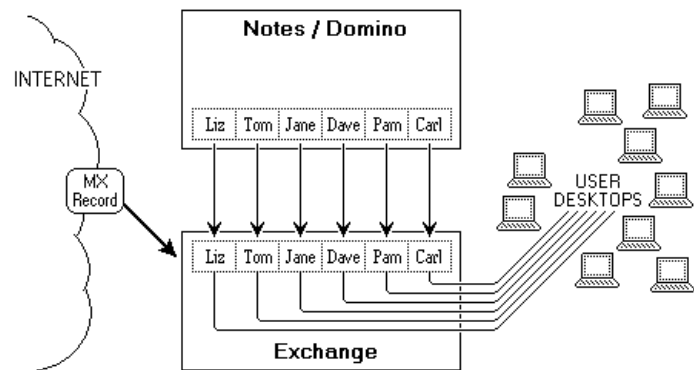
The MNE *Data Migration Wizard* mailbox enables the AD accounts of migrating users, and sets mail-forwarding rules in Notes so mail addressed to the Notes addresses of migrated users is forwarded to the now-active Exchange mailboxes.



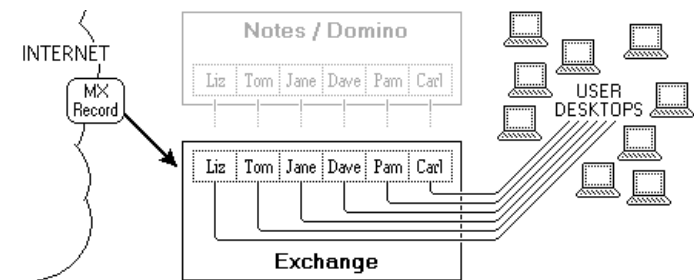
This process repeats as each user group migrates to the new server.



When the last group is migrated to Exchange ...



... the old Domino server can be decommissioned.



Migration process overview

- [Necessary pre-migration preparations](#)
- [Migration process \(per user collection\)](#)
- [Post-migration cleanup](#)

i **NOTE:** This overview is not meant to substitute for the step-by-step process instructions in the *Migrator for Notes to Exchange Scenarios Guide*. The material here is intended to familiarize you with Migrator for Notes to Exchange and the contexts in which its components are typically used. See the *Scenarios Guide* for step-by-step process instructions.

This section describes a typical migration scenario using Migrator for Notes to Exchange to migrate to a local, proprietary Exchange target. Details and flow charts for this process appear in chapter 2 of the *Migrator for Notes to Exchange Scenarios Guide*. In this example, an administrator performs the migrations for a series of user groups with no user input or interaction so the Self-Service Desktop Migrator (SSDM) is not used.

This scenario assumes an Exchange 2010 or later target, using Quest Coexistence Manager for Notes (CMN) to facilitate directory updates, mail routing and mail remediation, and calendar and free/busy coexistence. (CMN is a separate Quest product.) MNE also supports migrations to Office 365 as described in chapter 3 of the *Scenarios Guide*.

The approach described here is appropriate for many migrations, but the configuration, circumstances and institutional priorities of any given site will dictate variations to this process. Migrator for Notes to Exchange offers many operational options that permit much flexibility in devising and implementing a suitable migration strategy. See the MNE *Scenarios Guide* for detailed information about how Quest tools accommodate various migration scenarios. The *Scenarios Guide* flow charts are included here to summarize the process visually.

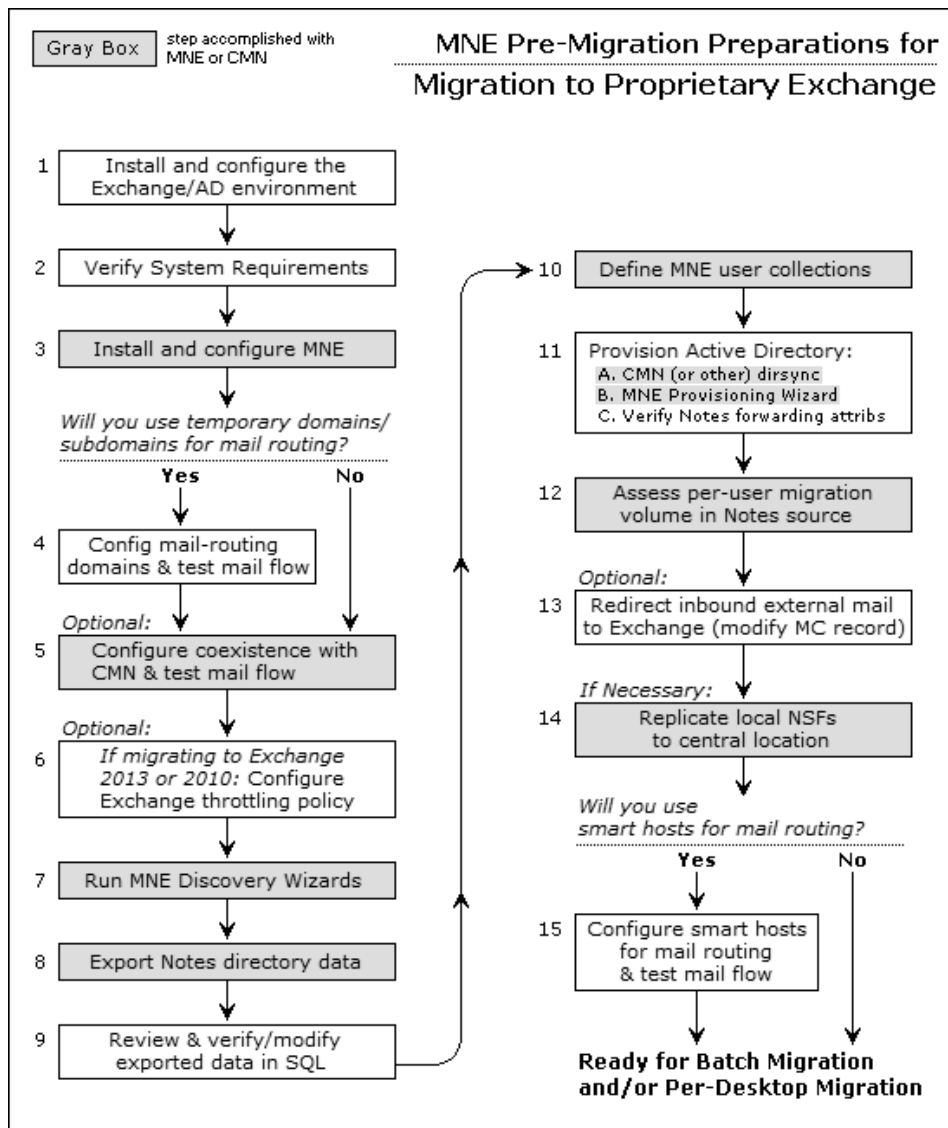
Necessary pre-migration preparations

The process begins with the existing user accounts and mailboxes on a Domino server. The destination Exchange server is set up on another computer and the migration process will require administrator accounts on both servers. Microsoft Outlook must be installed on user desktops and Migrator for Notes to Exchange is installed on the administrator migration computer.

You also install the Quest Coexistence Manager for Notes (CMN), and run its Directory Connector to perform a directory update between the source and target servers. This process creates mail-enabled accounts (contacts) in Active Directory for all Notes users. The CMN Directory Connector does not create mailboxes, but its directory update provisions new mail-enabled contacts in Active Directory, which associates the existing user Notes addresses with their corresponding new objects in AD. The new objects are said to be “mail-enabled” because Exchange can now accept mail addressed to these user Notes addresses and route it to the corresponding mailboxes on the Domino server.

Users in this scenario are migrated in a series of collections (user groups) over a period of weeks, so you will require an email coexistence strategy that permits mail-forwarding throughout the transition period—when some users have already been migrated to Exchange while others wait their turn back in Domino. If you choose the SMTP method of mail-routing and want a single-domain approach, you would configure a smart host for each environment. (All of the coexistence methods and their alternatives are summarized in the *Migrator for Notes to Exchange Pre-Migration Planning Guide*.) When the SMTP mail-routing is configured, you modify the MX (Mail eXchange) record to direct external (Internet) mail to the Exchange environment. Since no users are yet migrated but all users are provisioned and mail-enabled in Active Directory, for now all inbound Internet mail is routed back to the corresponding Notes mailboxes.

You run the MNE Notes Migration Manager to capture information about the Notes environment. From the Notes Migration Manager, you launch the NABs (Name & Address Book) Discovery Wizard to find the Notes NAB files that describe the Notes directory.



Next, you run the Internet Domains Discovery Wizard to assemble a list of all Notes and Internet domains in use in the Notes system. The Directory Export Wizard finds all the users, contacts, resources, and distribution lists (groups) in the Notes environment. The discovery and export wizards generate and save the data sets required by the MNE wizards that are used in the migration process.

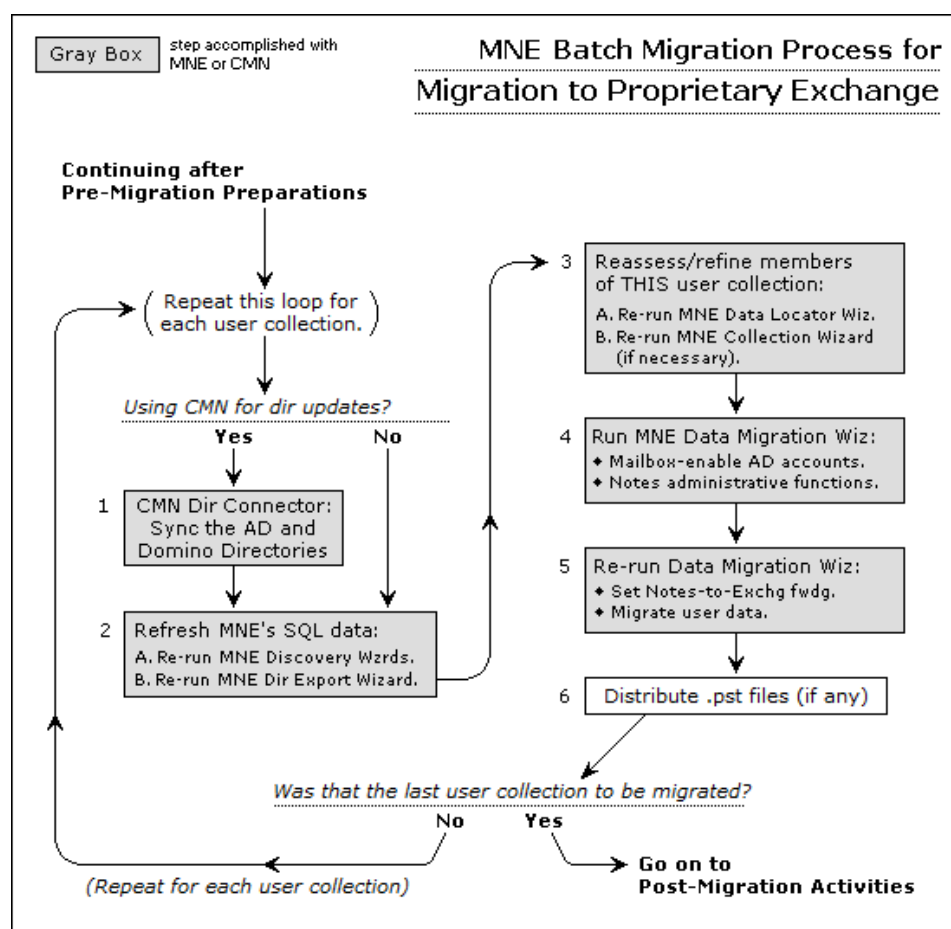
MNE provisioning, migration, and other features are applied to *collections* of users and distribution groups. A collection is a defined subset of the users or groups that the Directory Export Wizard has found in the Notes/Domino environment. These collections are created and characterized using the Collection Wizard, so you now run the Collection Wizard to define user and group collections.

In this scenario, Active Directory already existed with user accounts before you ran the CMN Directory Connector, so the newly created Exchange contacts coexist with existing AD user accounts for the same users. Migrator for Notes to Exchange provides a *Provisioning Wizard* that can consolidate duplicates before any data is migrated. The merge process requires the data that was exported from the Notes directory, so you run the *Provisioning Wizard* to perform the merges for the exported Notes users.

User archives and PABs are stored on local user hard drives so, before migration, users copy them to centralized, accessible locations where the *Data Migration Wizard* can find them. MNE includes a *PAB Replicator Wizard* that automates this process for the end-user PABs. After the files are copied, you run the *Locate Data Stores Wizard* to identify all the Notes mail files, archives, and PABs before migration. An administrator can review and assess the volume of data to be migrated from the captured data within *Notes Migration Manager*.

Migration process (per user collection)

All the tasks and conditions described in the preceding section are prerequisites to the migration of the first user collection.



If the organization has experienced any staff additions or changes since the last run of the *Directory Export Wizard*, you perform two updating tasks before the next run of the *Data Migration Wizard*:

- Re-run CMN Directory Connector to update the Notes and Exchange directories.
- Re-run the *Directory Export Wizard*, to update the MNE SQL database.

When the collection is ready, you run the *Data Migration Wizard* twice to perform several tasks for the users in the collection. (Many administrators report latency conflicts when trying to perform all tasks in a single program run.)

- In the first run, you mailbox-enable (create mailboxes for) the users in the collection who were provisioned as mail-enabled objects. This first run of the *Data Migration Wizard* also performs whatever administrative functions are appropriate.
- You run the *Data Migration Wizard* a second time to migrate the user data from Notes to Exchange and set mail forwarding from the old Notes mailboxes to the new Exchange mailboxes.

Migrator for Notes to Exchange copies data from Notes as Unicode and inserts it into Exchange as Unicode. Any data that contains a specific character set (MIME data) in the Notes source retains that character set after migration. The migration features do not convert MIME data into Unicode.

If the *Data Migration Wizard* migrates data to Outlook Personal Folder (.pst) files, when the migration is complete for this collection you must either:

- Notify users of the locations of their new .pst files (so each user can specify the location within his or her own desktop copy of Outlook).
- OR -
- Distribute the newly created .pst files to the user desktops.

This process, beginning with the re-run of the CMN Directory Connector (if necessary), is repeated for each collection of migrating users.

Post-migration cleanup

After the last user has migrated to the new Exchange server, you run the MNE *Groups Provisioning Wizard* to provision the Notes groups into Active Directory as distribution groups. Groups information was extracted from the Domino source and copied into the SQL database using the MNE *Directory Export Wizard*.

If appropriate, you can also configure ongoing directory synchronizations between the source and target directories. When the users and groups are migrated, you can permanently update mail routing to direct external incoming (Internet) mail to Exchange and remove the smart hosts that were used to route mail internally.

Finally, if you no longer need the Notes/Domino environment, verify that the old Domino server is no longer processing any mail traffic, delete the temporary migrate.domain.com domain, and decommission the Domino server.

About us

Quest provides software solutions for the rapidly-changing world of enterprise IT. We help simplify the challenges caused by data explosion, cloud expansion, hybrid datacenters, security threats, and regulatory requirements. We are a global provider to 130,000 companies across 100 countries, including 95% of the Fortune 500 and 90% of the Global 1000. Since 1987, we have built a portfolio of solutions that now includes database management, data protection, identity and access management, Microsoft platform management, and unified endpoint management. With Quest, organizations spend less time on IT administration and more time on business innovation. For more information, visit www.quest.com.

Technical support resources

Technical support is available to Quest customers with a valid maintenance contract and customers who have trial versions. You can access the Quest Support Portal at <https://support.quest.com>.

The Support Portal provides self-help tools you can use to solve problems quickly and independently, 24 hours a day, 365 days a year. The Support Portal enables you to:

- Submit and manage a Service Request.
- View Knowledge Base articles.
- Sign up for product notifications.
- Download software and technical documentation.
- View how-to-videos.
- Engage in community discussions.
- Chat with support engineers online.
- View services to assist you with your product.