

Toad for SAP Solutions 4.2.x

Release Notes

Thursday, August 15, 2024

Contents

- About Toad for SAP Solutions** 2
- New Features** 2
- System Requirements** 3
- Resolved Issues and Enhancements** 5
- Known Issues** 7
- Third Party Known Issues** 8
- Getting Started** 8
- Toad for SAP Solutions Editions** 9
- Product Licensing** 10
- Globalization** 10
- About Us** 11
- Copyright** 12

About Toad for SAP Solutions

With Toad, developers and database administrators can use a familiar, proven tool to manage databases. Toad empowers developers and administrators, of varying skill levels, to rapidly create and execute queries, automate database object management, and develop SQL more efficiently.

Toad also provides utilities to compare, extract and search for objects, manage projects, import/export data and administer the database, while increasing your productivity and delivering access to an active user community.

Toad for SAP Solutions 4.2.1 is a patch release with new enhancements, and resolved issues.

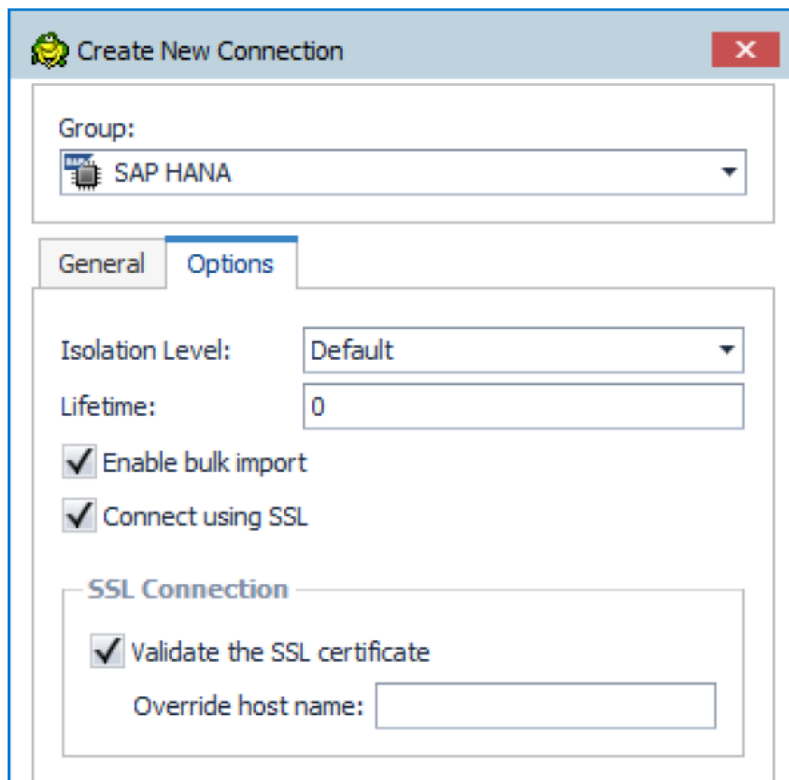
New Features

In Toad for SAP Solutions 4.2 the following new features were implemented:

Database Support

SSL connection for SAP HANA and SAP IQ:

Now you can connect to your SAP HANA and SAP IQ databases using SSL certificates.



See Resolved Issues for more enhancements and resolved issues in this release of Toad for SAP Solutions.

Learn More

Get the latest product information, find helpful resources, and join a discussion with the Toad for SAP Solutions team and other community members. Join the Toad for SAP Solutions community at [Toad World](#).

System Requirements

Client Requirements

Before installing Toad, ensure that your client system meets the following minimum hardware and software requirements:

Requirement	Details
Platform	2 GHz processor (recommended minimum)
Memory	8 GB of RAM minimum, 16 GB recommended Note: The memory required may vary based on the following: <ul style="list-style-type: none">• Applications that are running on your system when using Toad• Size and complexity of the database• Amount of database activity• Number of concurrent users accessing the database
Hard Disk Space	800 MB to install Toad 212 MB to run Toad Note: The disk space required may vary based on the edition of Toad selected for installation.
Operating System	Windows Server® 2012 Windows Server® 2012 R2 Windows Server® 2016 Windows Server® 2019 Windows® 8.1 (32-bit or 64-bit) Windows® 10 Windows® 11
.NET Framework	Microsoft® .NET Framework 4.7.1
Additional Requirements	Web Browser Microsoft® Internet Explorer® 11 or later Screen Recommended maximum DPI settings for Toad are 125%. It is possible to use Toad up to 200% but some dialog windows will not be completely usable anymore. Maximum tested resolution for Toad is 3800 x 2160 px.

Server Requirements

Before installing Toad, ensure that your server meets the following minimum hardware and software requirements:

Requirement	Details
Database Server	SAP ASE 15.5, 15.7, 16 SP03 SAP IQ 15, 16 SAP SQL Anywhere 16 SAP HANA SPS 08, SPS 09, SPS 10, SPS 11, SPS 12, SAP HANA 2.0, SAP HANA 2.0 SPS 02 Note: To use Access 2016 64-bit to connect to an Access database in Toad, the Microsoft Access Database Engine is required and might not be included in the Access installation. The engine must match the architecture (bitness) of Toad.

Virtualization Support

Requirement	Details
Application Virtualization	<p>When deploying Toad in a virtualization environment, for best results ensure the system accurately reflects the applicable client hardware and software requirements listed in this document.</p> <p>Toad has been developed using Microsoft guidelines (see Remote Desktop Services programming guidelines) and can be deployed and operated in virtualization environments such as Citrix XenApp, Microsoft App-V, and VirtualBox.</p> <p>See "Install Toad on Citrix Systems" (page 1) for more information.</p>

User Requirements

User Requirements to Install Toad

Only Windows Administrators and Power Users can install Toad.

If an Administrator installs Toad, the Administrator can share the Toad shortcut icon on the desktop and menu items with any user—a Power User, Restricted User—on the computer.

If a Power User installs Toad, a Restricted User cannot do the following:

- Associate file extensions.
- View the Toad shortcut icon on the desktop or the Toad menu options in the Windows Start menu. As a workaround, Restricted Users can create a shortcut to Toad from the install directory and place the shortcut on their desktop.

User Requirements and Restrictions for Running Toad

The following describes the requirements and restrictions for users who launch and run Toad:

- To create or modify the QuestSoftware.ToadSecurity table to enable Toad Security, the user who maintains this table must have privileges to create, insert, update, and delete it. All other users need only the ability to read the QuestSoftware.ToadSecurity table to use Toad Security features.

Resolved Issues and Enhancements

The following is a list of issues addressed and enhancements implemented in this release of Toad for SAP Solutions:

Resolved Issues in 4.2.1

Feature	Resolved Issue / Enhancement	Defect ID
Connection Manager	You now can use SSL when you connect to SAP IQ	3032/4702854,4700481,4567790,14690417
Data Compare & Sync	Data Compare can also use SSL when connecting to SAP IQ	15894
General	We have enhanced behavior of Toad at higher DPIs on larger resolution displays	15645
Query Builder	Query Builder now interprets IN conditions correctly	2730,2407/4684927, 4649100
Query Builder	Query Builder now correctly visualizes scripts with IN statements	2447/4653810

Resolved Issues in 4.2

Automation	Publishing wizard now sets permissions of objects correctly in Automation script	QAT-15458/4603555
Code Completion	Dragging and dropping column names from Object Explorer to Editor now works correctly.	QAT-15117
Data Compare & Sync	We have implemented a new performance option for exporting to Excel. Enable it in Tools Options Data Compare General	15514/1713
Data Compare & Sync	An issue when Data Compare displayed incorrect results has been fixed	15603
Data Compare & Sync	Error during Data Compare with a Local Storage table has been fixed	15602
Data Compare & Sync	An error when not all data rows were returned in Data Compare has been fixed	1663/4556801
General	An error when parsing a TIC query with group_concat() function has been fixed	2593/4666051
General	Users that execute Automation script are not added to OS Admin group on server anymore	2509/4197716
General	Behavior of Toad at high resolutions since patch version 5.1.2 has been improved	2320/4620661, 4623009, 4685386, 4685115
General	Collation property while importing data using Automation script has been modified to improve performance with certain JOINS on Tables	QAT-15314/4572415
Import Wizard	Save Log option is now saved in Import Templates	2281/4628189
Import Wizard	It is now possible to import blank values	2293/4587201
Installation	Opening associated files with SQL extension now works	

	correctly with Toad	
Installation	You now can deploy user settings during silent installation of Toad. Enter a full path to the Options Template that you generated in Tools Options General for a silent installation.	1820/4618673
Job Management	An issue with migration of a Task Manager item using a password has been fixed	QAT-15368/4524397
Options	Up and Down arrows now work correctly in Tools Options Explorer Objects	QAT-15457/2221/2175
Pivot Grid	We have added options for Date Grouping and Formatting in Pivot Grid	QAT-15414/4556962
Pivot Grid	We improved backward compatibility of Pivot Grid	2688/4593313
Pivot Grid	Pivot Grid now allows you to use Aggregated data values in a calculated field.	QAT-14558/4415769
Query Builder	We improved attachment of Calculated fields in Query Builder to correct columns	2627/4650476
Query Builder	Several issues when using Where clause in Query Builder have been fixed	2292/4602617
Query Builder	An issue with WHERE clauses has been fixed	1653/15456/4555521
Query Builder	Adding additional AND clause in query tab and then visualizing does not create a Global Where clause	1371
Query Builder	You now can select LAG and LEAD in the list of functions for calculated fields in Query Builder	QAT-14252/4438857
Schema Compare	Now you can ignore differences in constraint names when one of the names is system generated	TSS-1525/4198363
SQL Editor	Highlighting keyboard shortcuts now work correctly in Editor.	QAT-15111/4542078, 4555409, 4559368, 4564671
Team Server	Publishing a script with different schemas from the same database now works correctly	QAT-15319/4534571

Known Issues

The following is a list of issues known to exist at the time of this release.

Feature	Known Issue	Defect ID
Query Builder	In SAP Sybase IQ and SAP Sybase SQL Anywhere, queries with a varchar datatype that contain single quotation marks do not function correctly when generating the query plan. Workaround: Replace single quotation marks with double single quotation marks when generating the explain plan. Note: This fix only affects the explain plan code for IQ and SQL Anywhere.	ST92945
Debugger	An ASE exception occurs when stepping into or over a function during procedure debugging.	ST94273
Schema Compare	Schema Compare add-in that generates DLL does not currently work from all objects context menus.	TSY-524
	An error "Object reference not set to an instance of an object" displays when some snapshots are opened directly in Toad.	2305673-1/TSY-236
Monitor	The monitor is enabled by default after Tools Monitor Process Browser is started but the tooltip still reads 'Enable Monitor'.	TSY-523
	SQL Monitor will take several seconds to load in case of large SQL text data.	2289371-1/TSY-160
Object Editor	In some cases Toad generates DROP and CREATE OR REPLACE at the same time for functions.	TSY-1942
	Currently, it is not possible to Grant some of the roles for SAP HANA, incl. sap.hana.admin.roles::Monitoring or sap.hana.admin.roles::Administrator. Workaround: Assign the roles using the procedure from _SYS_REPO: GRANT_ACTIVATED_ROLE.	TSY-1495
Queries	It is not possible to cancel some queries running in the background.	TSY-486
QP5	Items are not aligned properly when "Commas in lists" are configured "Leading with space" in Options Editor Formatter .	TSY-260

Third Party Known Issues

The following is a list of third party issues known to exist at the time of release of Toad for SAP Solutions 4.2.x.

Feature	Known Issue	Defect ID
Connection Manager	An error "System.ArgumentOutOfRangeException 'count' must be non-negative. Parameter name: count" using SAP IQ client 16 was fixed.	TSY-1589/2912320-1
Excel	If an Excel file is open in Toad, you cannot open the same file in a separate Excel instance. To review this and other limitations when using Excel in the Web Browser, see "Considerations When Using the WebBrowser Control" at: http://support.microsoft.com/kb/304662 .	ST42486
Export Wizard/ One Click Export	To export to an Office 2003 or 2007 Excel instance, the Office Primary Interop Assemblies (PIAs) must be installed. You can install the PIAs from one of the following locations: 2003 PIAs: http://www.microsoft.com/downloads/details.aspx?FamilyID=3c9a983a-ac14-4125-8ba0-d36d67e0f4ad&DisplayLang=en 2007 PIAs: http://www.microsoft.com/downloads/details.aspx?familyid=59DAEBAA-BED4-4282-A28C-B864D8BFA513&displaylang=en	N/A
ADO.Net Driver	Debugger does not allow you to step into or out of procedures.	N/A
Debugger	Debugger support has been discontinued since SAP IQ 16. See SAP IQ Documentation for more information.	TSY-1356
SQL Editor	System procedure sa_get_user_status throws error on IQ 16 due to a new column user_dn_cached_at, which has incorrect timestamp values set. This will be fixed in future updates of SAP IQ. The KBA reference is 2174162. Workaround: Write your own procedure or a view and select only the correct columns (exclude user_dn_cached_at column) or change the incorrect column datatype to varchar instead of timestamp.	TSY-1060

Getting Started

Contents of the Release Package

The Toad release package contains the following products:

1. Toad for SAP Solutions 4.2
2. Product Documentation, including:
 - Installation Guide
 - Online Help
 - Release Notes

Installation Instructions

See the *Toad for SAP Solutions Installation Guide* for more information.

Toad for SAP Solutions Editions

Each Toad for SAP Solutions is packaged with additional Quest products to expand your SAP Solutions experience. The following products may be part of your Toad for SAP Solutions Edition:

[Toad for SAP Solutions](#)

[Benchmark Factory](#)

[SQL Optimizer for SAP ASE](#)

[Spotlight on SAP ASE](#)

[Toad Data Modeler](#)

The following Toad for SAP Solutions editions are available:

Edition	Licensed
Toad for SAP Solutions Base Edition	Toad for SAP Solutions Base
Toad for SAP Solutions Xpert Edition	Toad for SAP Solutions Xpert SQL Optimizer for SAP ASE
Toad for SAP Solutions Developer Edition	Toad for SAP Solutions Xpert SQL Optimizer for SAP ASE Benchmark Factory
Toad for SAP Solutions DBA Edition	Toad for SAP Solutions Xpert Benchmark Factory for Databases Spotlight on SAP ASE Toad Data Modeler
Toad for SAP Solutions DB Admin Module	DB Admin Module

i NOTE: The DB Admin Module Add-on can be added to any edition of Toad.

i IMPORTANT: Your license key determines the edition and will enable Toad for SAP Solutions functionality accordingly. In many cases, if functionality is disabled within Toad, you may not have an appropriate license to use it. When Toad is running, you can see which components are licensed by selecting **Help | About**.

Product Licensing

To activate a purchased commercial license:

1. In the Licensing dialog, enter your license (Authorization) key.
2. Enter the site message included with the license key.

Globalization

This section contains information about installing and operating this product in non-English configurations, such as those needed by customers outside of North America. This section does not replace the materials about supported platforms and configurations found elsewhere in the product documentation.

This release is Unicode-enabled and supports any character set. It supports simultaneous operation with multilingual data. This release is targeted to support operations in the following regions: North America, Western Europe and Latin America, Central and Eastern Europe, Far-East Asia, Japan.

This release has the following known capabilities or limitations: If the user overrides the default installation path during installation, the new path specification cannot contain Unicode characters.

About Us

Quest creates software solutions that make the benefits of new technology real in an increasingly complex IT landscape. From database and systems management, to Active Directory and Office 365 management, and cyber security resilience, Quest helps customers solve their next IT challenge now. Around the globe, more than 130,000 companies and 95% of the Fortune 500 count on Quest to deliver proactive management and monitoring for the next enterprise initiative, find the next solution for complex Microsoft challenges and stay ahead of the next threat. Quest Software. Where next meets now. For more information, visit www.quest.com.

Contact Quest

For sales or other inquiries, visit www.quest.com/contact.

Technical Support Resources

Technical support is available to Quest customers with a valid maintenance contract and customers who have trial versions. You can access the Quest Support Portal at <https://support.quest.com>.

The Support Portal provides self-help tools you can use to solve problems quickly and independently, 24 hours a day, 365 days a year. The Support Portal enables you to:

- Submit and manage a Service Request
- View Knowledge Base articles
- Sign up for product notifications
- Download software and technical documentation
- View how-to-videos
- Engage in community discussions
- Chat with support engineers online
- View services to assist you with your product

Copyright

© 2024 Quest Software Inc.
ALL RIGHTS RESERVED.

This guide contains proprietary information protected by copyright. The software described in this guide is furnished under a software license or nondisclosure agreement. This software may be used or copied only in accordance with the terms of the applicable agreement. No part of this guide may be reproduced or transmitted in any form or by any means, electronic or mechanical, including photocopying and recording for any purpose other than the purchaser's personal use without the written permission of Quest Software Inc.

The information in this document is provided in connection with Quest Software products. No license, express or implied, by estoppel or otherwise, to any intellectual property right is granted by this document or in connection with the sale of Quest Software products. EXCEPT AS SET FORTH IN THE TERMS AND CONDITIONS AS SPECIFIED IN THE LICENSE AGREEMENT FOR THIS PRODUCT, QUEST SOFTWARE ASSUMES NO LIABILITY WHATSOEVER AND DISCLAIMS ANY EXPRESS, IMPLIED OR STATUTORY WARRANTY RELATING TO ITS PRODUCTS INCLUDING, BUT NOT LIMITED TO, THE IMPLIED WARRANTY OF MERCHANTABILITY, FITNESS FOR A PARTICULAR PURPOSE, OR NON-INFRINGEMENT. IN NO EVENT SHALL QUEST SOFTWARE BE LIABLE FOR ANY DIRECT, INDIRECT, CONSEQUENTIAL, PUNITIVE, SPECIAL OR INCIDENTAL DAMAGES (INCLUDING, WITHOUT LIMITATION, DAMAGES FOR LOSS OF PROFITS, BUSINESS INTERRUPTION OR LOSS OF INFORMATION) ARISING OUT OF THE USE OR INABILITY TO USE THIS DOCUMENT, EVEN IF QUEST SOFTWARE HAS BEEN ADVISED OF THE POSSIBILITY OF SUCH DAMAGES. Quest Software makes no representations or warranties with respect to the accuracy or completeness of the contents of this document and reserves the right to make changes to specifications and product descriptions at any time without notice. Quest Software does not make any commitment to update the information contained in this document.

If you have any questions regarding your potential use of this material, contact:

Quest Software Inc.
Attn: LEGAL Dept
4 Polaris Way
Aliso Viejo, CA 92656

Refer to our web site (www.quest.com) for regional and international office information.

Patents

Quest Software is proud of our advanced technology. Patents and pending patents may apply to this product. For the most current information about applicable patents for this product, please visit our website at www.quest.com/legal.

Trademarks

Quest, Quest Software, Benchmark Factory, Spotlight, LiteSpeed, SQL Navigator, vWorkspace, Toad, and the Quest logo are trademarks of Quest Software Inc. in the U.S.A. and other countries. For a complete list of Quest Software trademarks, please visit our website at www.quest.com/legal. Microsoft, Windows, Windows Server, Visual Studio, SharePoint, Access and Excel are either registered trademarks or trademarks of Microsoft Corporation in the United States and/or other countries. Citrix® and XenApp™ are trademarks of Citrix Systems, Inc. and/or one or more of its subsidiaries, and may be registered in the United States Patent and Trademark Office and in other countries. SAP is the registered trademark of SAP AG in Germany and in several other countries. Subversion is a trademark of the Apache Software Foundation. Snowflake® is a registered trademark of Snowflake Inc. in the United States and/or other countries. All other trademarks, servicemarks, registered trademarks, and registered servicemarks are property of their respective owners.

Toad for SAP Solutions 4.2
Release Notes
Thursday, August 15, 2024