



# Quest<sup>®</sup> NetVault<sup>®</sup> Backup 12.4 **Installation Guide**



© 2019 Quest Software Inc.

**ALL RIGHTS RESERVED.**

This guide contains proprietary information protected by copyright. The software described in this guide is furnished under a software license or nondisclosure agreement. This software may be used or copied only in accordance with the terms of the applicable agreement. No part of this guide may be reproduced or transmitted in any form or by any means, electronic or mechanical, including photocopying and recording for any purpose other than the purchaser's personal use without the written permission of Quest Software Inc.

The information in this document is provided in connection with Quest Software products. No license, express or implied, by estoppel or otherwise, to any intellectual property right is granted by this document or in connection with the sale of Quest Software products. EXCEPT AS SET FORTH IN THE TERMS AND CONDITIONS AS SPECIFIED IN THE LICENSE AGREEMENT FOR THIS PRODUCT, QUEST SOFTWARE ASSUMES NO LIABILITY WHATSOEVER AND DISCLAIMS ANY EXPRESS, IMPLIED OR STATUTORY WARRANTY RELATING TO ITS PRODUCTS INCLUDING, BUT NOT LIMITED TO, THE IMPLIED WARRANTY OF MERCHANTABILITY, FITNESS FOR A PARTICULAR PURPOSE, OR NON-INFRINGEMENT. IN NO EVENT SHALL QUEST SOFTWARE BE LIABLE FOR ANY DIRECT, INDIRECT, CONSEQUENTIAL, PUNITIVE, SPECIAL OR INCIDENTAL DAMAGES (INCLUDING, WITHOUT LIMITATION, DAMAGES FOR LOSS OF PROFITS, BUSINESS INTERRUPTION OR LOSS OF INFORMATION) ARISING OUT OF THE USE OR INABILITY TO USE THIS DOCUMENT, EVEN IF QUEST SOFTWARE HAS BEEN ADVISED OF THE POSSIBILITY OF SUCH DAMAGES. Quest Software makes no representations or warranties with respect to the accuracy or completeness of the contents of this document and reserves the right to make changes to specifications and product descriptions at any time without notice. Quest Software does not make any commitment to update the information contained in this document.

If you have any questions regarding your potential use of this material, contact:

Quest Software Inc.  
Attn: LEGAL Dept.  
4 Polaris Way  
Aliso Viejo, CA 92656

Refer to our website (<https://www.quest.com>) for regional and international office information.




**Patents**

Quest Software is proud of our advanced technology. Patents and pending patents may apply to this product. For the most current information about applicable patents for this product, please visit our website at <https://www.quest.com/legal>.

**Trademarks**

Quest Software, Quest, the Quest logo, QoreStor, and NetVault are trademarks and registered trademarks of Quest Software Inc. For a complete list of Quest marks, visit <https://www.quest.com/legal/trademark-information.aspx>. All other trademarks and registered trademarks are property of their respective owners.

**Legend**

-  **WARNING:** A WARNING icon indicates a potential for property damage, personal injury, or death.
  
-  **CAUTION:** A CAUTION icon indicates potential damage to hardware or loss of data if instructions are not followed.
  
-  **IMPORTANT NOTE, NOTE, TIP, MOBILE, or VIDEO:** An information icon indicates supporting information.

# Contents

<b>Introduction</b>	<b>6</b>
About Quest® NetVault® Backup	6
Key benefits	6
Feature summary	7
About this document	8
Target audience	8
Recommended additional reading	8
<b>Deploying NetVault Backup</b>	<b>9</b>
About deploying NetVault Backup	9
NetVault Backup components	10
NetVault Backup Server	10
NetVault Backup Clients	10
NetVault Backup plug-ins	10
NetVault Backup WebUI	12
NetVault Backup Command Line Interface	12
Deployment planning	12
Determine the server and client machines	13
Determine the installation directory	13
Determine the database location	13
Determine NetVault Backup name and password	14
Determine NetVault Backup PostgreSQL Linux user account	15
<b>Reviewing pre-installation requirements</b>	<b>16</b>
General requirements	16
Platform-specific requirements	18
CentOS 6.x	19
CentOS 7	19
Debian 7.x (64-bit)	20
Debian 8.x (64-bit)	20
Debian 9.x (64-bit)	21
FreeBSD 10.x and 11.1 (32/64-bit)	21
Linux	21
RHEL 5.X	22
RHEL 6	22
RHEL 7	23
RHEL 8	23
SLES 11 SP3	24
SLES 12	25
SLES 15	25
Ubuntu 14.04 and 16.04	26
Windows	27
<b>Installing NetVault Backup</b>	<b>28</b>

Installation overview	28
NetVault Backup installer	28
Installation modes	29
Installation mode selection	29
Installation logs	30
Push installation method	30
Installing NetVault Backup in GUI mode	30
Installing NetVault Backup in text mode	37
Installing NetVault Backup in unattended mode	40
Examples	42
Sample option files	43
Installing NetVault Backup Client on Windows using Group Policy	44
<b>Reviewing post-installation requirements</b>	<b>47</b>
Platform-specific post-installation requirements	47
Linux	47
RHEL 5.x	48
Solaris 10 (SPARC and x86-64)	48
Solaris 11 (SPARC and x86-64)	49
Ubuntu	50
Windows	50
Windows 2008 R2	50
<b>Upgrading NetVault Backup</b>	<b>51</b>
Upgrade considerations	51
Upgrading from NetVault Backup 12.3	52
Preparing for an upgrade	52
Upgrading NetVault Backup in GUI mode	53
Upgrading NetVault Backup in text mode	54
Upgrading NetVault Backup in unattended mode	54
Migrating NetVault Backup Server from Hybrid to Pure environment	55
Migration Prerequisites	55
Migrating NetVault Backup Server in GUI mode	55
Migrating NetVault Backup Server in unattended mode	58
Migrating NetVault Backup Server from 32-bit OS to 64-bit OS	60
Upgrading licensed plug-ins	60
<b>Licensing NetVault Backup</b>	<b>61</b>
About licensing NetVault Backup	61
Obtaining the machine ID	61
Obtaining permanent license keys	61
Installing product license keys	62
<b>Removing NetVault Backup</b>	<b>63</b>
Removing NetVault Backup Server or Client	63
<b>Troubleshooting</b>	<b>65</b>
Common errors	65

**About us** ..... 68  
Technical support resources ..... 68

# Introduction

- [About Quest® NetVault® Backup](#)
- [About this document](#)
- [Target audience](#)
- [Recommended additional reading](#)

## About Quest® NetVault® Backup

Quest NetVault Backup (NetVault Backup) offers the most advanced, cross-platform data protection capabilities on the market as well as unsurpassed ease of use, out-of-the-box deployment, and pain-free scalability.

NetVault Backup allows you to safeguard your data and applications in both physical and virtual environments from one intuitive user interface and to protect a massive number of servers that contain many petabytes of data. NetVault Backup also features heterogeneous support, so you can safeguard data on a wide range of operating systems, applications, databases, processor architectures, and networked storage devices. Such cross-platform versatility makes it easy for you to tailor NetVault Backup to match the ever-changing and growing landscape of your IT infrastructure.

## Key benefits

- Simple, out-of-the-box deployment for fast time to value
- Fully automated installation manager that simplifies deployment of Windows clients
- Protection for both physical and virtual environments for cost savings
- Heterogeneous server support for unparalleled coverage in diverse IT environments
- Broad application support
- Disk-based backup and deduplication to significantly improve storage efficiency
- Seamless integration with the Quest DR Series system for source-side deduplication and WAN-optimized replication
- Comprehensive Network Attached Storage (NAS) protection to safeguard critical data
- Feature rich protection of virtual environments
- Bare metal recovery to drastically reduce the time it takes to recover a failed server
- Extensive storage attachment options to allow for distributed backup targets and workload
- Dynamic device sharing to optimize backup data transfers and reduce points of failure
- Fast file-system backups with high performance multi-streaming

# Feature summary

- **Application protection:** Ensure the availability of business-critical applications such as Oracle, SQL Server, Exchange, SharePoint, MySQL, PostgreSQL, Domino, DB2, Informix, SAP, and Sybase with application plug-ins. These plug-ins complement native solutions to save you time on integration. No scripting is required to run backup and recovery jobs.
- **NAS protection:** Get advanced data protection for information stored on NAS appliances, including the devices made by Quest, EMC, Hitachi, IBM, NetApp, and Sun. You can reduce traffic over the LAN and maximize performance by backing up data using Network Data Management Protocol (NDMP). NetVault Backup supports many different storage topologies and configurations, allowing you to perform backups directly to a locally attached SCSI device, a SAN-attached device, or a storage device elsewhere on the network.
- **Enterprise-wide control:** Use the web-based interface to configure, manage, and monitor your backup and recovery operations. Convenient wizards guide you through the common tasks, such as creating backup jobs, assigning policies, configuring storage devices, and generating reports.
- **Back up to disk and tape:** Leverage disk- and tape-based backups to a wide range of storage targets, including NAS devices and third-party deduplication appliances. NetVault Backup also allows you to move data from one storage target to another for off-site storage and disaster recovery purposes.
- **Data deduplication:** Reduce your data storage footprint with powerful deduplication technologies. NetVault Backup integrates seamlessly with the Quest DR Series of deduplication systems and the Rapid Data Access (RDA) client-side deduplication technology, enabling you to take full advantage of the system's powerful deduplication, compression, and replication capabilities. Additionally, NetVault Backup supports software-defined Quest QoreStor™ storage devices (Linux only), which provide the advantage of RDA client-side deduplication. NetVault Backup also supports EMC Data Domain backup and recovery platform, as well as its DD Boost technology for deduplication.
- **Virtualization support:** Extend advanced data protection to VMware and Hyper-V environments. NetVault Backup gives you consistent, reliable, point-and-click backup and restore for virtual environments without requiring you to be an expert.
- **High-performance multi-streaming:** Save time and ease management by backing up multiple workloads simultaneously.
- **Strong security:** Meet regulatory requirements without sacrificing backup windows or deduplication performance with encryption plug-ins for CAST-128, CAST-256, and AES-256 algorithm support. Flexible job-level encryption lets you easily select which data to encrypt.
- **Simple, straight-forward licensing:** License NetVault Backup by capacity or by component. This option gives you incredible flexibility to choose the model that best meets the organization's needs. With component-based licensing, you can choose which modules you need. You can also license NetVault Backup by capacity and deploy an unlimited number of clients or application plug-ins. Quest offers two capacity-based licensing editions for NetVault Backup. One offers great value for growing businesses; the other offers comprehensive protection for large enterprises.

# About this document

This guide provides information about installing the NetVault Backup Server and Client software. It does not provide information about the NetVault Backup features and functionality. For more information about using NetVault Backup to protect your data, see the *Quest NetVault Backup Administrator's Guide*.

## **i** IMPORTANT:

- NetVault Backup stores the system data in a PostgreSQL database, which resides on the NetVault Backup Server. You should not attempt to modify the NetVault Database directly using any PostgreSQL tools unless directed by Quest Technical Support personnel. Improper changes to the database can cause irrecoverable data corruption. Before modifying the NetVault Database, make sure that you create a backup copy of the database. For more information about backing up the NetVault Database, see the *Quest NetVault Backup Built-in Plug-ins User's Guide*.
- NetVault Backup stores the system configuration settings in “.cfg” files, which reside in the **config** directory under the NetVault Backup installation directory. The settings in these files should only be modified under the guidance of Quest Technical Support personnel. Improper changes to these files can cause errors and other unexpected behavior. Before modifying a configuration file, make sure that you create a backup copy of the file.

## Target audience

This guide is intended for backup administrators and other technical personnel who are responsible for designing and implementing a backup strategy for the organization. A good understanding of the operating systems on which the NetVault Backup Server and Clients are running is assumed.

## Recommended additional reading

- *Quest NetVault Backup Administrator's Guide*: This guide describes how to configure and use NetVault Backup to protect your data. It provides comprehensive information about all NetVault Backup features and functionality.
- *Quest NetVault Backup CLI Reference Guide*: This guide provides information about using the NetVault Backup command-line utilities.
- *Quest NetVault Backup Plug-in for FileSystem User's Guide*: This guide provides information about installing, configuring, and using NetVault Backup Plug-in for *FileSystem*.
- *Quest NetVault Backup Built-in Plug-ins User's Guide*: This guide provides information about configuring and using the following plug-ins:
  - NetVault Backup Plug-in for *Consolidation*
  - NetVault Backup Plug-in for *Data Copy*
  - NetVault Backup Plug-in for *Databases*
  - NetVault Backup Plug-in for *Raw Devices*
- *Quest NetVault Backup Compatibility Guide*: This guide provides information about the platforms, operating system versions, and application versions that are supported by NetVault Backup.

You can download these guides from <https://support.quest.com/technical-documents>.



# Deploying NetVault Backup

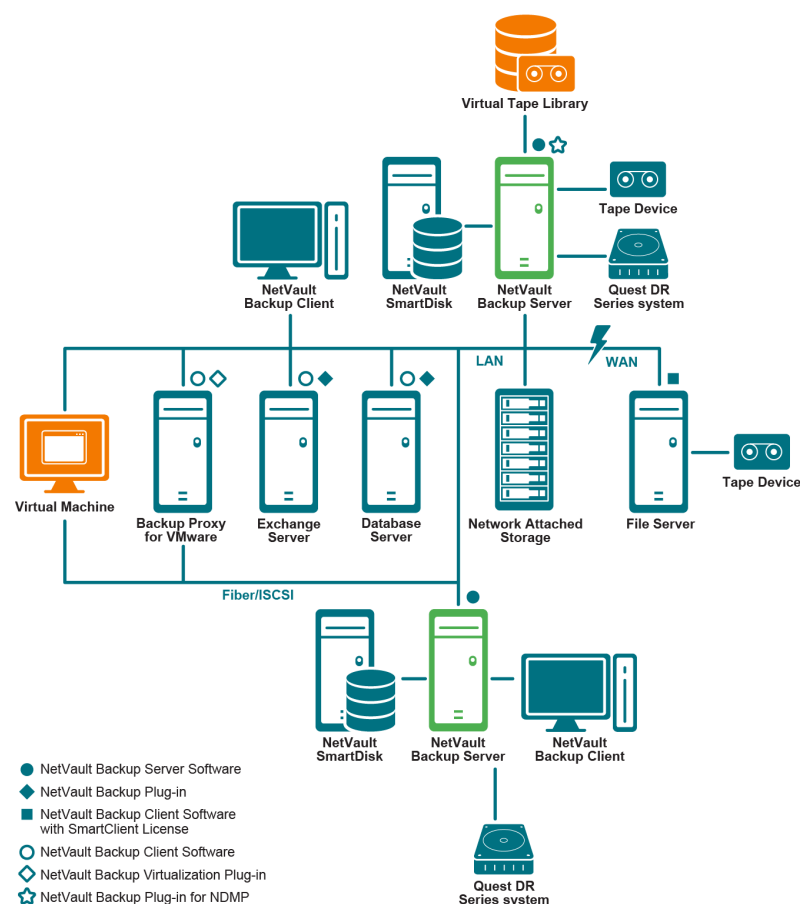
- [About deploying NetVault Backup](#)
- [NetVault Backup components](#)
- [Deployment planning](#)

## About deploying NetVault Backup

In a NetVault Backup setup, one machine is configured as the NetVault Backup Server and various other machines that you want to protect function as NetVault Backup Clients. A single server and its associated clients form a **NetVault Backup Domain**.

The following diagram depicts a NetVault Backup deployment.

Figure 1. NetVault Backup deployment overview



# NetVault Backup components

A NetVault Backup deployment consists of the following components:

- [NetVault Backup Server](#)
- [NetVault Backup Clients](#)
- [NetVault Backup plug-ins](#)
- [NetVault Backup WebUI](#)
- [NetVault Backup Command Line Interface](#)

## NetVault Backup Server

The NetVault Backup Server provides the core services for protecting your data.

The server provides services such as schedule management, job management, device management, media management, user management, notification management, and log management. The server administers backup and restore jobs for all assigned clients. Various types of physical and virtual storage devices can be locally attached to the server.

The NetVault Backup Server can run on Windows and Linux operating systems.

## NetVault Backup Clients

The NetVault Backup Client is installed on machines that you want to protect using the NetVault Backup solution. These machines can be file servers, database servers, email servers, application servers, and workstations.

The NetVault Backup Clients are assigned to a NetVault Backup Server, which manages all data protection operations for the clients. A single server and its associated clients form a NetVault Backup Domain. A NetVault Backup SmartClient license is required to attach physical or virtual storage devices locally to a NetVault Backup Client.

The NetVault Backup Client can run on AIX, FreeBSD, HP-UX, Linux, Mac OS X, Solaris, and Windows operating systems.

## NetVault Backup plug-ins

The NetVault Backup Plug-ins are used to protect various applications and data stored on the server and client machines. There are two categories of NetVault Backup plug-ins: built-in plug-ins and licensed plug-ins.

### Built-in plug-ins

The built-in plug-ins are packaged with the NetVault Backup software, and automatically installed on the respective machines when you install the NetVault Backup Server and Client software.

NetVault Backup offers the following types of built-in plug-ins:

- **NetVault Backup Plug-in for FileSystem (Plug-in for FileSystem):** The Plug-in *for FileSystem* protects critical file system data, and minimizes downtime by allowing you to restore full volumes, individual partitions, or individual directories and files quickly and reliably with minimal interaction.
- **NetVault Backup Plug-in for Consolidation (Plug-in for Consolidation):** The Plug-in *for Consolidation* lets you create a composite saveset by combining a Full Backup and its associated Incremental Backups. You can use this consolidated saveset as the base for subsequent Incremental Backups. The Plug-in *for Consolidation* does not back up data from a client; it just creates a composite set from existing savesets.

- **NetVault Backup Plug-in for Data Copy (Plug-in for Data Copy):** The *Plug-in for Data Copy* lets you create one or more copies of backups for off-site storage and disaster recovery purposes. The *Plug-in for Data Copy* does not back up data from a client; it just creates a copy of an existing backup.
- **NetVault Backup Plug-in for Databases (Plug-in for Databases):** The *Plug-in for Databases* protects system data (such as configuration files, system settings, backup indexes, backup media information, job schedule, license keys, and other data) stored in the NetVault Database. You can use this backup to recover a functional NetVault Backup Server after a failure.
- **NetVault Backup Plug-in for Raw Devices (Plug-in for Raw Devices):** The *Plug-in for Raw Devices* protects data stored on physical disks. The plug-in lets you recover the Master Boot Record (MBR), system partitions, and individual user partitions from a point-and-click user interface without writing any complex scripts.
- **Quest NetVault Backup Plug-in for Rapid Data Access (Plug-in for RDA):** The *Plug-in for RDA* lets you use the client-side and inline deduplication capabilities that are available in other products, such as the Quest DR Series system of deduplication appliances and the software-defined Quest QoreStor storage devices (Linux only).

For more information about built-in plug-ins, see the *Quest NetVault Backup Plug-in for FileSystem User's Guide* and *Quest NetVault Backup Built-in Plug-ins User's Guide*.

## Licensed plug-ins

The licensed plug-ins are available as separate products, and installed on the NetVault Backup Server and Client machines to protect specific applications and appliances.

NetVault Backup offers the following types of licensed plug-ins:

- **Plug-ins for applications:** These plug-ins provide data protection to business-critical applications, such as Oracle, SQL Server, Exchange, SharePoint, MySQL, PostgreSQL, Domino, DB2, Informix, SAP, and Sybase.
- **Plug-ins for NDMP-based NAS appliances:** These plug-ins enable NDMP-based backups and restores for appliances that support this protocol. NetVault Backup also offers specialized plug-ins that integrate the NetApp SnapMirror, SnapVault, and Snapshot technologies to provide advanced data protection to NetApp appliances.
- **Plug-ins for virtual environments:** These plug-ins provide data protection to virtual machines in VMware and Hyper-V environments.
- **Plug-ins for backup encryption:** These plug-ins provide support for CAST-128, AES-256, and CAST-256 algorithms to meet regulatory backup security requirements.
- **Plug-ins for device integration:** These plug-ins enable configuration of specialized tape libraries for use in a NetVault Backup environment.
- **Plug-ins for bare metal recovery:** These plug-ins let you recover an entire system, including the operating system, applications, system settings, partition information, and data on supported Windows and Linux operating systems.

NetVault Backup also offers cluster-aware versions of various plug-ins that enable data protection for distributed data.

For more information about the licensed plug-ins, see the respective plug-in user's guide.

# NetVault Backup WebUI

NetVault Backup offers a web-based user interface, called the NetVault Backup WebUI, to configure, manage, and monitor your NetVault Backup system.

You can use the NetVault Backup WebUI to perform various tasks such as the following:

- Configure performance, security, and other options
- Manage clients, storage devices, and storage media
- Perform backups and restores
- Monitor jobs, device activities, and logs
- Set up notifications
- Generate and view reports

You can access the NetVault Backup WebUI from any standard browser. You can use the WebUI to remotely administer a NetVault Backup Server from any system on which you can run a supported web browser and connect to the server over HTTP or HTTPS.

## NetVault Backup Command Line Interface

NetVault Backup also provides a Command Line Interface that allows you to configure and manage a NetVault Backup system from a command prompt window or terminal window.

You can use the NetVault Backup CLI utilities to perform various tasks such as the following:

- Start and stop the NetVault Backup Service
- Configure performance, security, and other options
- Manage clients, storage devices, and storage media
- Perform backups and restores
- Generate and view reports

The NetVault Backup command-line utilities can be accessed from the NetVault Backup Server and Client machines. For more information about the command-line interface, see the *Quest NetVault Backup Command Line Interface Reference Guide*.

## Deployment planning

Before you deploy a NetVault Backup system, review the following topics:

- [Determine the server and client machines](#)
- [Determine the installation directory](#)
- [Determine the database location](#)
- [Determine NetVault Backup name and password](#)
- [Determine NetVault Backup PostgreSQL Linux user account](#)

# Determine the server and client machines

The first step in deploying NetVault Backup is to identify the server and client machines:

- **NetVault Backup Server:** This machine hosts the server version of NetVault Backup.  
The server manages all NetVault Backup operations and administers backup and recovery operations for the clients. A NetVault Backup Server can also act as a client to itself for backups and restores of its local data.
- **NetVault Backup Clients:** These machines host the client version of NetVault Backup and serve as the backup and restore targets.

## Determine the installation directory

NetVault Backup must reside on a local disk. If you select a network share or mount point, and that is lost, it would cause NetVault Backup to stop or malfunction.

On Linux and UNIX platforms, you cannot install NetVault Backup on mount points. The installer tries to delete the existing contents on the mount point, which is not allowed on Linux and UNIX.

A NetVault Backup server installation requires about 200MB of disk space on Windows-based systems and 160MB of disk space on Linux-based systems.

## Determine the database location

The NetVault Database stores system information, configuration files, job details, and backup indexes. It is created on the NetVault Backup Server. The database continues to grow in size as various data protection operations are performed in the NetVault Backup system. NetVault Backup operations can stop if the database cannot be updated due to lack of disk space.

The NetVault Database cannot reside on a remote file system (for example, network share, network mapped drive, or NFS volume). For installing the NetVault Database, you must select a directory on a local drive or volume.

- i** | **NOTE:** In large environments, we recommend that you select 500GB or 1TB disks with RAID 10 or RAID 5 configurations. The disks must support high Input/Output Operations Per Second (IOPS). Therefore, Solid State Drives (SSD) or 10k and 15k Serial Attached SCSI (SAS) drives are recommended.

## Database subdirectories

The database directory contains the following subdirectories:

- **install:** This directory contains the **modules** file, which includes a list of NetVault Backup modules installed on the server and client machines. The **install** directory is small in size.
- **bkl:** This directory contains the license key files for the NetVault Backup products. The **bkl** directory is small in size.
- **MediaDatabase:** This directory stores the media records and backup indexes. The MediaDatabase directory grows to be rather large as you use the NetVault Backup system. To estimate space requirements for the MediaDatabase directory, see [Database size calculation](#).
- **pgsql:** This directory stores the backup and restore job records. The space requirement for this directory depends on the content of the jobs. When calculating space requirement for the NetVault Database, consider adding 10 percent of the MediaDatabase size for this directory.

## Database size calculation

For estimating space requirements for the MediaDatabase, consider the following:

- **Approximate number of files and directories backed up per machine:** Each file or directory that is included in a backup requires an average number of bytes for an index entry in the NetVault Database. This average is based on a formula of 71 bytes plus the average number of characters contained in the filenames of the files that make up a target file system.
- **Number of generations of each backup retained:** Each generation is a separate instance of a file or directory backup. For example, if the same file is backed up seven times using the default backup settings, there are seven generations of the file stored on the media and indexed in the NetVault Database.

Based on this information, you can use the following formula to calculate space requirement for the MediaDatabase directory:

Approximate number of files and directories backed up per machine	Multiplied by	Approximate number of generations retained	Multiplied by	Number of machines backed up	Multiplied by	(71 bytes + average filename length)
---	---------------	--	---------------	------------------------------	---------------	--------------------------------------

### Example

With an average file or directory name of eight characters for a target file system, if you back up 200,000 files and 15,000 directories once, indexing uses 17.5MB. If you back up the same files and directories three times, indexing uses 52.5MB. If you back up the same files and directories five times, indexing uses 87.5MB, and so on.

## Determine NetVault Backup name and password

During installation, the NetVault Backup Server and Client machines are assigned a name and password:

- **NetVault Backup machine name:** The NetVault Backup machine name is used to identify the server and client machines in a NetVault Backup Domain.

By default, NetVault Backup uses the OS-assigned name of the machine. If the name includes any illegal characters, NetVault Backup replaces those characters with underscores (“\_”).

The NetVault Database is tied to the NetVault Backup Server through its name. While relocating a server, a backup of the NetVault Database is used to recover the system after installing the NetVault Backup software on the new machine. Therefore, we recommend that you do not use the OS-assigned name for the NetVault Backup Server.

The NetVault Backup machine name can contain a maximum of 63 characters. If the machine name is longer than 63 characters, the NetVault Backup Service may fail to start. The NetVault Backup machine names can include uppercase letters (A–Z), lowercase letters (a–z), numbers (0–9), hyphens (“-”), underscores (“\_”), and periods (“.”).

- **NetVault Backup machine passwords:** The NetVault Backup machine password is used while adding a client to the server. The machine password can contain a maximum of 100 characters. It cannot contain the characters: \ and spaces.

**i** **NOTE:** While installing NetVault Backup in GUI mode or Text mode, in the Machine Password or PostgreSQL Database Superuser Password, do not escape any special character. However, while using the CLI options like `nvpasword` or `nvpgdbpasswd`, escape the special characters such that the desired password is properly received by the CLI. For example, if the password is `<>&#|/'*:.-`()[]{}$@?` then, enter it as the following:

**On Linux shell:** `<>&#\|/'*:.-`()\ [\ ]\$\@?`

**On Windows command prompt:** `"<>&#|/'*:.-`() [\ ]\$\@?"`

# Determine NetVault Backup PostgreSQL Linux user account

In NetVault Backup, run PostgreSQL under a separate user account. This user account must only own the data that is managed by the server, and must not be shared with other daemons.

Sometimes, due to policy restrictions on your system, the NetVault Backup server installer on Linux operating system is unable to create new PostgreSQL Linux user account automatically.

While installing NetVault Backup Server version 11.2 or later, you can select any of the following options for PostgreSQL Linux user account:

- **Allow NetVault Backup to create PostgreSQL Linux user:** The default option to allow NetVault Backup to create PostgreSQL Linux user account automatically (default value: `netvault-pgsql` on Linux).
- **Linux user name:** Create a new Linux user account by referring to the corresponding operating system guide. Ensure that the specified PostgreSQL Linux user belongs to the group `<user name>`. Create the group with the same name as of the Linux user name and add the user into the same group.

**i** | **NOTE:** While creating a PostgreSQL Linux user account, do not use 'root' user in the field 'Linux user name'. In NetVault Backup, PostgreSQL cannot run by a 'root' user due to restrictions from PostgreSQL.

# Reviewing pre-installation requirements

- [General requirements](#)
- [Platform-specific requirements](#)

## General requirements

Before you start the installation procedure, verify that the following requirements are met:

- **Review the release notes and compatibility guide:** Before you start the installation procedure, review the Release Notes thoroughly. The Release Notes may contain important information regarding the installation and use of NetVault Backup.

You must also review the *Quest NetVault Backup Compatibility Guide*, which contains information about the supported platforms, operating system versions, devices, and application versions. You can download this guide from <https://support.quest.com/technical-documents>.

- **Review the OS requirements for NetVault Backup Server and Client:** The NetVault Backup Server can be installed on Linux and Windows. The NetVault Backup Client can be installed on AIX, FreeBSD, HP-UX, Linux, Mac OS X, Solaris, and Windows.

For information about supported operating system versions, see the *Quest NetVault Backup Compatibility Guide* available at <https://support.quest.com/technical-documents>.

- **Review the NetVault Backup Server Sizing Guide:** This guide provides information about system requirements for the NetVault Backup Server. You can download this guide from <https://support.quest.com/technical-documents>.
- **Select the correct installation package on Linux and Windows:** NetVault Backup offers separate client-only and server-only installation packages for Linux- and Windows-based systems. Both the server and the client packages are available in hybrid and pure 64-bit versions:
  - **Hybrid server and client packages:** The hybrid packages are intended for users who do not have a pure 64-bit-only requirement.

These packages let you upgrade from pure 32-bit as well as hybrid installations of NetVault Backup. The hybrid packages retain binary compatibility with all previous versions of 32-bit and 64-bit plugins. These packages also work on 32-bit systems that do not have 64-bit capability.
  - **Pure 64-bit server and client packages:** The pure 64-bit packages are intended for pure 64-bit operating systems. If you have a specific reason that you cannot use any 32-bit components (for example, you are using a Linux distribution that does not run 32-bit code), use these packages.

The pure 64-bit packages cannot be used to upgrade existing pure 32-bit or hybrid NetVault Backup installations. You must remove the existing pure 32-bit or hybrid version and install the pure 64-bit version separately. To reduce confusion, warning messages have been added to both the upgrade and installation packages to ensure that you understand that they are incompatible.



Depending on your OS type, make sure that you select the correct installation package to install the NetVault Backup Server software:

- **netvault-<RYYYYMMDD>-vx.x.x.x-Server-{LinuxX86Hybrid|WindowsX86Hybrid}**: Use this package to install or upgrade NetVault Backup Server on 32-bit or 64-bit systems.
- **netvault-<RYYYYMMDD>-vx.x.x.x-Server-{LinuxX86Pure64|WindowsX86Pure64}**: Use this package to install or upgrade NetVault Backup Server on pure 64-bit systems.

For client installations, make sure that you select the appropriate package based on your system.

**i** **IMPORTANT:** Before installing the hybrid package of NetVault Backup on 64-bit Linux machines, make sure that all the required 32-bit libraries are installed on the system. For more information about the requirements, see [Platform-specific requirements](#). The installation process may fail silently if the installer is unable to find the required libraries on the system.

- **Set OS permissions:** Set appropriate OS permissions on the target machines to allow users to install software components.
- **Set the executable permission to the Linux and UNIX installers:** On Linux and UNIX platforms, set the executable permission to the installers.
- **Select multiuser runlevel on Linux and UNIX:** On Linux and UNIX platforms, boot into multiuser mode.
- **Set user permission (umask) on Linux and UNIX:** On Linux and UNIX platforms, do not change the default **umask** value for the root user. The default value is 022. Setting **umask** to a value other than 022 (for example, 077) can cause job failures if the plug-in users are unable to access the NetVault Backup files.
- **Verify the SELinux (Security-Enhanced Linux) policy:** If SELinux is enabled using the default “targeted” policy, NetVault Backup processes do not cause any Access Vector Cache (AVC) denial problems. If a strict or custom policy is implemented, ensure that NetVault Backup processes can run in unconfined mode.
- **Disable the anti-virus software:** We recommend that you disable the anti-virus software before installing or upgrading NetVault Backup. If you do not disable the anti-virus software, the installation process may conflict with the anti-virus software and various NetVault Backup operations may fail to function properly after installation.
- **Verify TCP/IP connectivity:** NetVault Backup requires good TCP/IP connectivity between the server and client machines. To use name resolution, a host name must resolve to a unique IP address.
- **Check storage device connections:** Verify that the storage devices are properly connected and functional. You can check the device connections using any native OS tool for minimal backup operations on the device.
- **Configure “ulimit” variables on Linux and UNIX:** On Linux and UNIX, the default size limitation for various variables may conflict with the NetVault Backup installation. For example, the default setting for the **file size (blocks)** and **virtual memory (kbytes)** variables may be too low for NetVault Backup.

If you do not increase these values, installation may fail and a “core dump” error may be reported. To avoid this problem, we recommend that you use the “unlimited” setting for variables.

**Table 1. Variable settings on Linux and UNIX**

core file size (blocks)	32768
data seg size (kbytes)	unlimited
file size (blocks)	unlimited
open files	64
pipe size (512 bytes)	10
stack size (kbytes)	unlimited
cpu time (seconds)	unlimited
max user processes	400
virtual memory (kbytes)	unlimited

**To change the variable settings:**

- a Start a terminal session. To view the current settings, type:

```
ulimit -a
```

- b If the file size (blocks) variable is not set to “unlimited,” type:

```
ulimit unlimited
```

- c If the virtual memory (kbytes) variable is not set to “unlimited”, type:

```
ulimit -v unlimited
```

- d To re-list the statistics and verify the new settings, type:

```
ulimit -a
```

- **Load the SCSI Generic (sg) driver on Linux-based machines:** On Linux-based systems, NetVault Backup uses the **sg** driver to connect to the tape devices. On machines with locally attached tape devices, either manually load the **sg** driver or edit the kernel configuration file to automatically load this driver at boot time.

To manually load the driver, type:

```
modprobe sg
```

You must run this command every time the system is restarted.

To ensure that the driver is automatically loaded at boot time, you can include an entry for the driver in the kernel configuration file. For more information about loading a kernel module at boot time, consult the relevant OS documentation.

If this driver is not loaded, NetVault Backup fails to recognize any locally attached tape devices.

## Platform-specific requirements

This section covers the requirements for the following platforms:

- CentOS 6.x
- CentOS 7
- Debian 7.x (64-bit)
- Debian 8.x (64-bit)
- Debian 9.x (64-bit)
- FreeBSD 10.x and 11.1 (32/64-bit)
- Linux
- RHEL 5.X
- RHEL 6
- RHEL 7
- RHEL 8
- SLES 11 SP3
- SLES 12
- SLES 15
- Ubuntu 14.04 and 16.04
- Windows

# CentOS 6.x

Before installing the hybrid package of NetVault Backup on CentOS 6.x x86-64, install the following packages:

```
pam.i686
xorg-x11-fonts*
krb5-libs.i686
glibc.i686
atk.i686
bzip2-libs.i686
libgcc.i686
gtk2.i686
perl-libs.i686
libSM.i686
tcl.i686
libXxf86vm.i686
sssd-client.i686
```

When you try to install the i686 version of a 64-bit package that is already installed, the installer (yum) may report multiple library version errors. You must update the existing x86-64 libraries to the latest version before installing the i686 version.

## Example:

```
yum update krb5-libs
yum install krb5-libs.i686
```

# CentOS 7

Before installing the hybrid package of NetVault Backup on CentOS 7 x86-64, install the following packages:

```
atk.i686
bzip2-libs.i686
glib2.i686
glibc.i686
gtk2.i686
krb5-libs.i686
pam.i686
perl-libs.i686
tcl.i686
xorg-x11-fonts*
sssd-client.i686
```

Before installing the pure 64-bit package of NetVault Backup on CentOS 7 x86-64, install the following package:

```
tcl
```

## Debian 7.x (64-bit)

Before installing the pure 64-bit package of NetVault Backup on Debian 7.x (64-bit) systems, create the following link:

```
ln -s /usr/lib /usr/lib64
```

Before installing the hybrid package of NetVault Backup on Debian 7.x (64-bit) systems, install the following packages:

```
dpkg --add-architecture i386
apt-get update
apt-get install ia32-libs
apt-get install libnss-sss:i386
apt-get install libpam-sss:i386
```

## Debian 8.x (64-bit)

Before installing the pure 64-bit package of NetVault Backup on Debian 8.x (64-bit) systems, create the following link:

```
ln -s /usr/lib /usr/lib64
```

Before installing the hybrid package of NetVault Backup on Debian 8.x (64-bit) systems, install the following packages:

```
dpkg --add-architecture i386
apt-get update
apt-get install lib32z1
apt-get install lib32ncurses5
apt-get install gir1.2-atk-1.0:i386
apt-get install libatk1.0:i386
apt-get install libbz2-1.0:i386
apt-get install libglib2.0-0:i386
apt-get install libc6:i386
apt-get install libgtk2.0-0:i386
apt-get install libgssapi-krb5-2:i386
apt-get install libnss-sss:i386
apt-get install libpam-modules:i386
apt-get install libpam-sss:i386
apt-get install perl-modules:i386
apt-get install tcl:i386
```

## Debian 9.x (64-bit)

Before installing the pure 64-bit package of NetVault Backup on Debian 9.x (64-bit) systems, create the following link:

```
ln -s /usr/lib /usr/lib64
```

Before installing the hybrid package of NetVault Backup on Debian 9.x (64-bit) systems, install the following packages:

```
apt-get install libnss-sss:i386
```

```
apt-get install libpam-sss:i386
```

## FreeBSD 10.x and 11.1 (32/64-bit)

Before installing NetVault Backup on FreeBSD 10.x or 11.1 install the following packages:

- On FreeBSD 10.x and 11.1 (32-bit), install the `compat6x` package.
- On FreeBSD 10.x and 11.1 (64-bit), install the `compat7x` package.

## Linux

Before installing the NetVault Backup Server or Client software on Linux-based machines, install the `sysstat` package.

Before installing the NetVault Backup Server software on Linux-based machines, install the `libstdc++.so` library.

Before installing the NetVault Backup Server software on Linux-based machines, install the following packages:

```
fontconfig
```

```
libfontconfig
```

```
ghostscript-fonts
```

To prevent the garbled or blank reports in Japanese version of NetVault Backup Server on Linux-based machines, install the following package:

```
vlgothic-fonts
```

To run Duplicate or Data Copy jobs on a NetVault Backup Client, install the following shared object libraries:

```
libstdc++.so
```

```
libssl.so.0.9.7
```

```
libcrypto.so.0.9.7
```

To run the **deviceconfig** utility on a NetVault Backup Client, install the following shared object libraries:

```
libssl.so.0.9.7
```

```
libcrypto.so.0.9.7
```

**i** | **NOTE:** When installing the NetVault Backup hybrid package on a 64-bit Linux system, you must install the 32-bit libraries.

## RHEL 5.X

Before installing the hybrid package of NetVault Backup Server on RHEL 5.x (32/64 -bit), install the following packages:

```
libXp.i386
openmotif.i386
sssd-client.i686
```

Before installing the pure 64-bit package of NetVault Backup Server on RHEL 5.x86-64, install the following packages:

```
libXp.x86_64
openmotif.x86_64
```

Before installing the hybrid package of NetVault Backup Client on RHEL 5.x (32/64 -bit), install the following packages:

```
libXp.i386
openssl097a.i386
```

Before installing the pure 64-bit package of NetVault Backup Client on RHEL 5.x86-64, install the following packages:

```
libXp.x86_64
openssl097a.x86_64
```

Before installing NetVault Backup on RHEL 5.x Itanium, install the following package:

```
libXp-1.0.0-*.ia64.rpm and llibXmu-1.0.2-*.ia64.rpm
```

## RHEL 6

Before installing the hybrid package of NetVault Backup on RHEL 6 x86-64, install the following packages:

```
krb5-libs.i686
pam.i686
xorg-x11-fonts*
glibc.i686
atk.i686
bzip2-libs.i686
libgcc.i686
gtk2.i686
perl-libs.i686
libSM.i686
tcl.i686
libXxf86vm.i686
sssd-client.i686
```

When you try to install the i686 version of a 64-bit package that is already installed, the installer (yum) may report multiple library version errors. You must update the existing x86-64 libraries to the latest version before installing the i686 version.

**Example:**

```
yum update krb5-libs
yum install krb5-libs.i686
```

## RHEL 7

Before installing the hybrid package of NetVault Backup on RHEL 7 x86-64, install the following packages:

```
atk.i686
bzip2-libs.i686
glib2.i686
glibc.i686
gtk2.i686
krb5-libs.i686
pam.i686
perl-libs.i686
tcl.i686
sssd-client.i686
xorg-x11-fonts*
```

Before installing the pure 64-bit package of NetVault Backup on RHEL 7 x86-64, install the following package:

```
tcl
```

## RHEL 8

Before installing the hybrid package of NetVault Backup on RHEL 8 x86-64, install the following packages:

- atk.i686
- bzip2-libs.i686
- glib2.i686
- glibc.i686
- gtk2.i686
- krb5-libs.i686
- pam.i686
- perl-libs.i686
- sssd-client.i686
- tcl.i686
- xorg-x11-fonts\*

Before installing the pure 64-bit package of NetVault Backup on RHEL 8 x86-64, install the following package:

```
tcl
```

# SLES 11 SP3

The following table lists the prerequisites for installing NetVault Backup on SUSE Linux Enterprise Server (SLES) 11 SP3.

**Table 2. Prerequisites: SLES 11 SP3**

<b>NetVault Backup package</b>	<b>SLES 11 SP3 (32-bit or 64-bit)</b>	<b>Requirement</b>
Hybrid Client	SLES 11 SP3 32-bit	<code>compat-openssl1097g-0.9.7g-146.22.1.i586.rpm</code> You can install this library from SUSE 11 SP3 Desktop 32-bit DVD 1.
Hybrid Client	SLES 11 SP3 64-bit	<code>compat-openssl1097g-32bit-0.9.7g-146.20.1.x86_64.rpm</code> You can install this library from SUSE 11 SP3 Desktop 64-bit DVD 1.
Pure-64 bit Client	SLES 11 SP3 64-bit	<code>compat-openssl1097g-0.9.7g-146.20.1.x86_64.rpm</code> You can install this library from SUSE 11 SP3 Desktop 64-bit DVD 1.



# SLES 12

Before installing the hybrid package of NetVault Backup Server on SLES 12 64-bit, complete the following steps:

- Install the following packages:

```
libXt6-32bit
libXmu6-32bit
libgdk_pixbuf-2_0-0-32bit
libgtk-2_0-0-32bit
libgthread-2_0-0-32bit
```

- Create the following link:

```
ln -s /usr/lib/libtcl8.6.so /usr/lib/libtcl8.5.so
```

Before installing the pure 64-bit package of NetVault Backup Server on SLES 12 64-bit, create the following link:

```
ln -s /usr/lib64/libtcl8.6.so /usr/lib64/libtcl8.5.so
```

Before installing the pure 64-bit package of NetVault Backup Client on SLES 12 64-bit, complete the following steps:

- Download libopenssl0\_9\_8-0.9.8j-62.1.x86\_64.rpm from SUSE Downloads website and install this package.
- Create the following links:

```
ln -s /usr/lib64/libcrypto.so.0.9.8 /usr/lib64/libcrypto.so.0.9.7
ln -s /usr/lib64/libssl.so.0.9.8 /usr/lib64/libssl.so.0.9.7
```

# SLES 15

Before installing the hybrid package of NetVault Backup Server on SLES 15 64-bit, complete the following steps:

- Install the following packages:

```
libXt6-32bit
libXmu6-32bit
libgdk_pixbuf-2_0-0-32bit
libgtk-2_0-0-32bit
libgthread-2_0-0-32bit
pam-32bit
krb5-32bit
system-group-obsolete (if group sys is not present)
```

- Create the following link:

```
ln -s /usr/lib/libtcl8.6.so /usr/lib/libtcl8.5.so
```

Before installing the pure 64-bit package of NetVault Backup Server on SLES 15 64-bit, complete the following steps:

- Install the following package:

```
system-group-obsolete (if group sys is not present)
```

- Create the following link:

```
ln -s /usr/lib64/libtcl8.6.so /usr/lib64/libtcl8.5.so
```

Before installing the hybrid package of the NetVault Backup Client on SLES 15 64-bit, complete the following steps:

- Install the following package:

```
system-group-obsolete (if group sys is not present)
```

Before installing the pure 64-bit package of the NetVault Backup Client on SLES 15 64-bit, complete the following steps:

- Download and install `libopenssl0_9_8-0.9.8j-62.1.x86_64.rpm` from the SUSE Downloads website.
- Install the following package:

```
system-group-obsolete (if group sys is not present)
```

- Create the following links:

```
ln -s /usr/lib64/libcrypto.so.0.9.8 /usr/lib64/libcrypto.so.0.9.7
ln -s /usr/lib64/libssl.so.0.9.8 /usr/lib64/libssl.so.0.9.7
```

## Ubuntu 14.04 and 16.04

Before installing the hybrid package of NetVault Backup on 64-bit Ubuntu 14.04, and 16.04, install the following packages:

```
dpkg --add-architecture i386
apt-get update
```

Before installing the hybrid package of NetVault Backup on 64-bit Ubuntu 14.04, install the following packages:

```
apt-get install lib32z1 lib32ncurses5 lib32bz2-1.0
```

Before installing the hybrid package of NetVault Backup on 64-bit Ubuntu 16.04, install the following packages:

```
apt-get install lib32z1 lib32ncurses5 lib32bz2-1.0:i386
```

Before installing the pure 64-bit package of NetVault Backup on 64-bit Ubuntu 14.04, create the following link:

```
ln -s /usr/lib /usr/lib64
```

Before installing the pure 64-bit package of NetVault Backup on 64-bit Ubuntu 16.04, complete the following steps:

- Create the following link:

```
ln -s /usr/lib /usr/lib64
```

- Install the following packages:

```
apt-get install libaiol
apt-get install libstdc++5
```

# Windows

**Increase non-interactive desktop heap on NetVault Backup Server:** On Windows-based NetVault Backup Servers, the default setting for the non-interactive desktop heap memory setting has the potential to be exhausted when you do the following:

- Run several simultaneous jobs on the NetVault Backup Server.  
For example, when you run 25 simultaneous jobs, NetVault Backup uses about 200KB additional non-interactive desktop heap. In this scenario, some jobs continue to run, while others fail with the message “Job Died Unexpectedly.” This issue is a known Windows problem (ID: 184802).
- Add several drives to a Virtual Tape Library (VTL).
- Browse a Backup Selection Set containing a deeply nested directory structure. In this scenario, the message “failed to get connection to plugin” is displayed.

To correct these issues, increase the size of the non-interactive desktop heap in the following registry value:

```
HKEY_LOCAL_MACHINE\SYSTEM\CurrentControlSet\Control\SessionManager\SubSystems\Windows
```

The **SharedSection** setting in this registry value controls how the desktop heap is allocated. The heap size is specified in KB. The format for specifying the heap size is as follows:

```
SharedSection=xxxx, yyyy, zzzz
```

xxx defines the maximum size of the system-wide heap

yyyy defines the size of each desktop heap

zzzz defines the size of the desktop heap that is associated with a non-interactive Windows station

## **To increase the size of the non-interactive desktop heap:**

- 1 Start the Registry Editor. (In the **Run** box on the **Start Menu**, type **regedit**, and press **Enter**.)
- 2 Expand the `HKEY_LOCAL_MACHINE\SYSTEM\CurrentControlSet\Control\Session Manager\SubSystems` key.
- 3 On the right pane, right-click **Windows**, and select **Modify**.
- 4 In the **Edit String** dialog box, change the value for the **SharedSection** parameter from 512 to 1024:  
`Windows SharedSection=1024, 3072, 1024`
- 5 Click **OK**, and close the Registry Editor.

---

# Installing NetVault Backup

- [Installation overview](#)
- [Installing NetVault Backup in GUI mode](#)
- [Installing NetVault Backup in text mode](#)
- [Installing NetVault Backup in unattended mode](#)
- [Installing NetVault Backup Client on Windows using Group Policy](#)

## Installation overview

You can install NetVault Backup by using the interactive or non-interactive installation method. You can also use the push installation method to simultaneously install the NetVault Backup Client software on multiple Windows-based machines. This section provides an overview of the NetVault Backup installer and available installation methods.

It includes the following topics:

- [NetVault Backup installer](#)
- [Installation modes](#)
- [Installation mode selection](#)
- [Installation logs](#)
- [Push installation method](#)

## NetVault Backup installer

The NetVault Backup installer is offered as a single file—typically an application. The installation file is named as follows:

```
netvault-<RYYYYMMDD>-vx.x.x.x-{Server|Client}-<platform>
```

NetVault Backup offers separate client-only and server-only installation packages for Linux- and Windows-based systems. Both the server and the client packages are available in hybrid and pure 64-bit versions.

On Mac OS X, the installer is packaged as a disk image (.dmg) file. The installation file for Mac OS X is named as follows: `netvault-<RYYYYMMDD>-vx.x.x.x-client-MacOSX.dmg`.

NetVault Backup supports installations in the following languages: English, Simplified Chinese, French, German, Japanese, and Korean. The installer automatically detects the system language and uses it as the default language. On systems that use an unsupported language, the installer defaults to English.

# Installation modes

You can run the NetVault Backup installer in graphical, text, or unattended mode. These modes are available for both new and upgrade installations. This section provides an overview of the available installation modes.

## Graphical mode

Use the graphical mode to install the software interactively from a graphical user interface. This mode is available on all supported operating systems that provide a graphical environment. The graphical mode requires GTK packages or X Window System libraries on Linux- and UNIX-based systems. The installer automatically runs in graphical mode if no installation mode is specified.

## Text mode

Use the text mode to install the software interactively from a text-based user interface. This mode is available on all supported operating systems, except Windows. On systems that do not provide a graphical environment, the installer automatically runs in text mode if no installation mode is specified.

## Unattended mode

Use the unattended mode to perform automated installations with minimal or no user interaction. This mode is supported on all operating systems. When performing unattended installations, you can specify the installation options at the command line or in an option file.

# Installation mode selection

When running the NetVault Backup installer, you can use the `--mode` option to specify the installation mode. Generally, you do not need to use this option because the installer automatically uses the default mode. If, for any reason, the default mode cannot be initialized, then the installer tries to use the alternative GUI or text modes, if available. For example, on Linux, if the GTK libraries are unavailable, the default **gtk** mode cannot be initialized. In such cases, the installer tries to use the **xwindow** mode, and if no X Server is detected, the installer defaults to **text** mode.

The following table lists the supported installation modes.

Table 3. Supported installation modes

Operating system	Supported modes
Linux	<ul style="list-style-type: none"><li>• gtk (default)</li><li>• xwindow</li><li>• text</li><li>• unattended</li></ul>
Mac OS X	<ul style="list-style-type: none"><li>• osx (default)</li><li>• text</li><li>• unattended</li></ul>
Windows	<ul style="list-style-type: none"><li>• win32 (default)</li><li>• unattended</li></ul>
UNIX	<ul style="list-style-type: none"><li>• xwindow (default)</li><li>• text</li><li>• unattended</li></ul>
OS without any graphical environment	<ul style="list-style-type: none"><li>• text (default)</li><li>• unattended</li></ul>

To run the installer in unattended mode, it is necessary to use the `--mode` option; the installer does not automatically switch to this mode. The `--mode` option is also required to run the installer in text mode on machines that support GUI (for example, to perform remote installations on Linux- or UNIX-based systems).

# Installation logs

The installer generates a log file in the system temporary directory. The file is named as follows:  
`netvault_{GUID}_install.log`, where {GUID} is unique for each installation occurrence (for example, `netvault_274bffb2-a3c1-457e-7f5e-221bf60a7689_install.log`).

If the installation fails for any reason, you can examine the log file for details about the problem.

If an installation or upgrade is unsuccessful, the installer may not generate the regular log file. Instead, the installer may leave an intermediate log file named `bitrock_installer.log` or `bitrock_installer_nnn.log` in the system temporary directory.

## Push installation method

The push installation method lets you install one or more software packages on remote machines. You can use this method to install or upgrade the NetVault Backup client and plug-ins on multiple machines. You can perform push installations from the NetVault Backup WebUI. The push installation method is only available to Windows-based machines. For more information about this method, see the *Quest NetVault Backup Administrator's Guide*.

# Installing NetVault Backup in GUI mode

The graphical mode is available on all supported operating systems that provide a graphical environment. This mode requires GTK packages or X Window System libraries on Linux- and UNIX-based systems.

### **To install NetVault Backup Server or Client in graphical mode:**

- 1 Log on to the system with administrator or root-level access, and navigate to the directory in which the installation file resides.
- 2 Double-click the installation file.

**i NOTE:** On Mac OS X, the installer is packaged as a disk image (.dmg) file. Before you can run the installer, you must mount the disk image by double-clicking the installation file. After the image is mounted, start the installer by double-clicking or pressing control and clicking the installer icon on the desktop.

After the installation completes, you can unmount the disk image from the Finder window by clicking the Eject icon next to the virtual drive icon. Alternatively, you can click the virtual drive icon on the desk top, and press CMD+E.

- 3 In the **Language Selection** dialog box, select the language for your NetVault Backup installation.

The available options are:

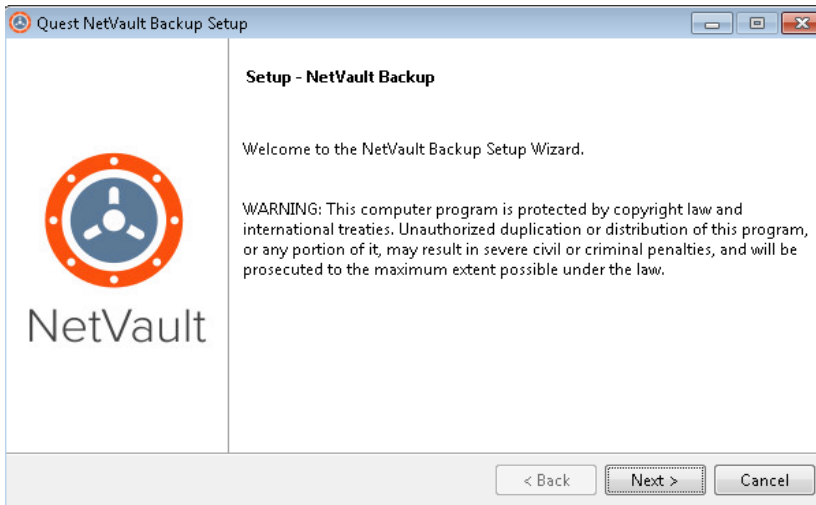
- English
- Simplified Chinese
- French
- German
- Japanese
- Korean

The default selection is English.

Click **OK**.

- 4 In the Welcome dialog box, review the notes, and click **Next** to continue.

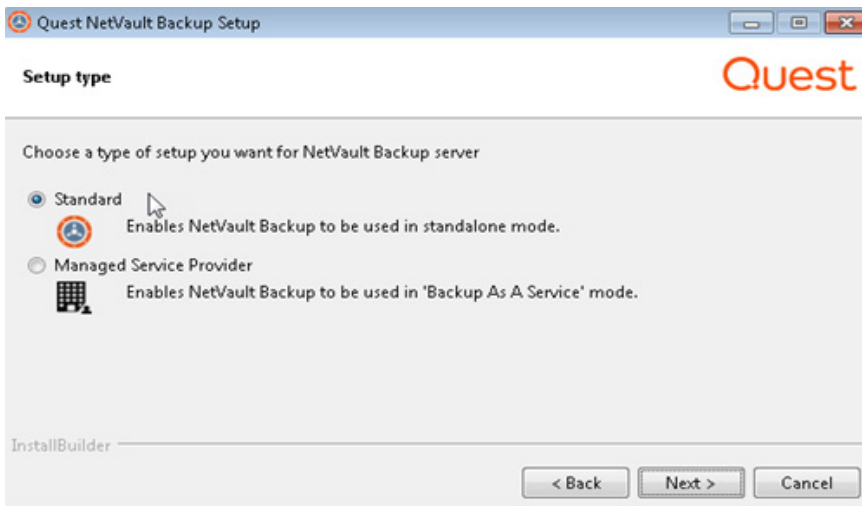
Figure 2. Welcome dialog box



- 5 Choose the type of setup for NetVault Backup Server as:
  - **Standard:** This option allows you to use the NetVault Backup Server in standalone mode.
  - **Managed Service Provider:** This option allows you to use NetVault Backup Server and provide backup as a service to clients or customers.

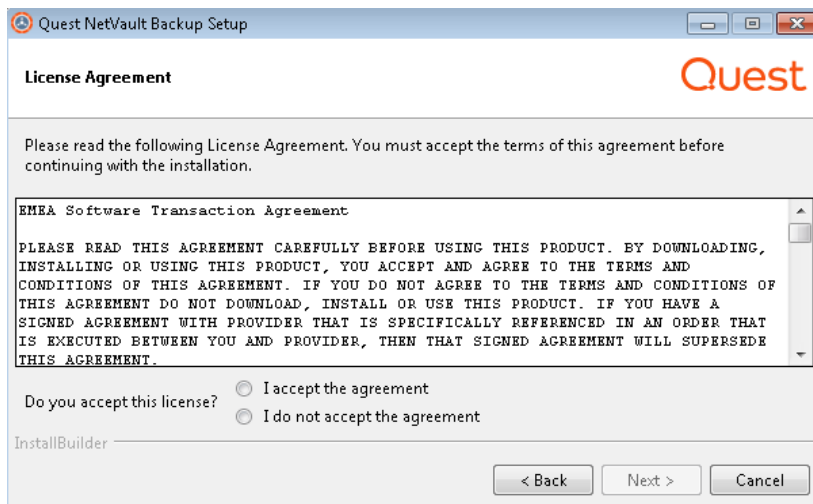
**i** | **NOTE:** The Managed Service Provider option is supported on Windows Server pure 64-bit version.

Figure 3. NetVault Backup Server Setup type



- 6 In the **License Agreement** dialog box, select the **I accept the agreement** option if you accept all the terms.

Figure 4. License Agreement dialog box



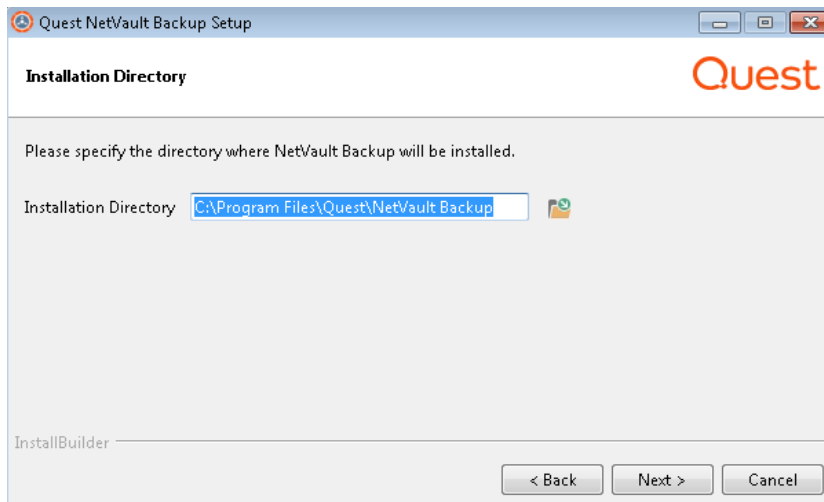
**i** | **NOTE:** Before proceeding with the installation, make sure that you have thoroughly reviewed the license agreement.

Click **Next** to continue.



- 7 In the **Installation Directory** dialog box, specify the installation path.

**Figure 5. Installation Directory dialog box**



The default installation path for NetVault Backup is as follows:

- **On Linux:** /usr/netvault
- **On Solaris:** /opt/netvault
- **On Windows:** C:\Program Files\Quest\NetVault Backup or C:\Program Files (x86)\Quest\NetVault Backup

To use the default path, click **Next**.

To change the location, type the new path, and click **Next**. If the specified path does not exist, it is automatically created during installation. You can also click **Browse**, and select the target directory from the Explorer window.

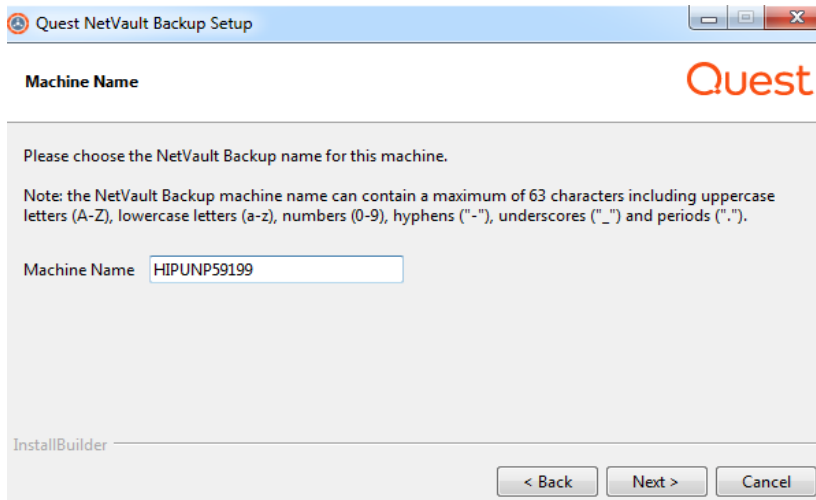
If the installation directory contains any files or directories, a warning is displayed:

The directory you have selected is not empty. If you continue the installation, everything in the directory will be deleted. Is it OK to install into this directory and delete the existing contents?

Select the **Yes** option, and then click **Next** to continue.

- 8 In the **Machine Name** dialog box, specify a unique name for the NetVault Backup Server. Click **Next**.

Figure 6. Machine Name dialog box

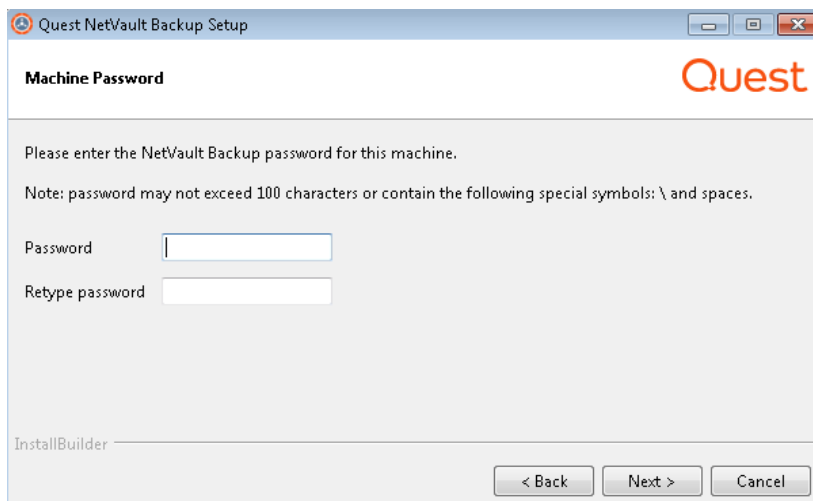


The screenshot shows a window titled "Quest NetVault Backup Setup" with the Quest logo in the top right. The main heading is "Machine Name". Below the heading, there is a text prompt: "Please choose the NetVault Backup name for this machine." followed by a note: "Note: the NetVault Backup machine name can contain a maximum of 63 characters including uppercase letters (A-Z), lowercase letters (a-z), numbers (0-9), hyphens ("-"), underscores ("\_") and periods (".")." A text input field labeled "Machine Name" contains the value "HIPUNP59199". At the bottom, there are three buttons: "< Back", "Next >", and "Cancel". The text "InstallBuilder" is visible in the bottom left corner.

By default, NetVault Backup uses the OS-assigned machine name. For more information about machine names, see [Determine NetVault Backup name and password](#).

- 9 In the **Machine Password** dialog box, specify a password for the NetVault Backup machine.

Figure 7. Machine Password dialog box



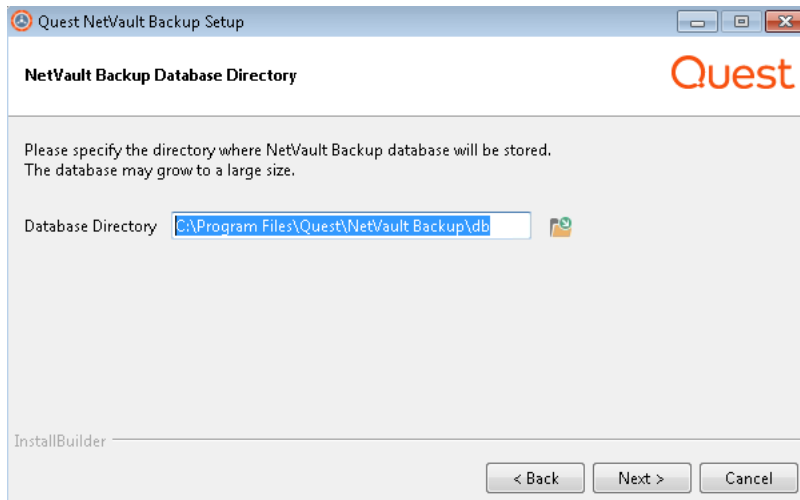
The screenshot shows a window titled "Quest NetVault Backup Setup" with the Quest logo in the top right. The main heading is "Machine Password". Below the heading, there is a text prompt: "Please enter the NetVault Backup password for this machine." followed by a note: "Note: password may not exceed 100 characters or contain the following special symbols: \ and spaces." There are two text input fields: "Password" and "Retype password". At the bottom, there are three buttons: "< Back", "Next >", and "Cancel". The text "InstallBuilder" is visible in the bottom left corner.

The machine password is used while adding a NetVault Backup Client to the server. If no password is set during installation, NetVault Backup uses the system's root or administrator password. For more information about passwords, see [Determine NetVault Backup name and password](#).

In the **Retype password** box, type the password again for confirmation. Click **Next**.

- 10 When installing the NetVault Backup Server, the **NetVault Backup Database Directory** dialog box is displayed next. This dialog box is not displayed during client installations.

**Figure 8. NetVault Backup Database Directory dialog box**



In the **Database Directory** box, specify the installation path for the NetVault Database.

The default path for NetVault Database is as follows:

- **On Linux:** `/usr/netvault/db`
- **On Windows:** `C:\Program Files\Quest\NetVault Backup\db` or `C:\Program Files (x86)\Quest\NetVault Backup\db`

To use the default installation path, click **Next**.

To change the location, type the new path, and click **Next**. If the specified path does not exist, it is automatically created during installation. You can also click **Browse**, and select the target directory from the Explorer window.

If the database directory contains any files or directories, a warning is displayed:

The directory you have selected is not empty. If you continue the installation, everything in the directory will be deleted. Is it OK to install into this directory and delete the existing contents?

- 11 When installing the NetVault Backup Server on Linux, the dialog box for PostgreSQL Linux user account is displayed next. This dialog box is not displayed during client installations. For more information about NetVault Backup PostgreSQL Linux user account, see [Determine NetVault Backup PostgreSQL Linux user account](#).

Select the option for PostgreSQL Linux user account:

- **Allow NetVault Backup to create PostgreSQL Linux user:** By default, this option is selected.
- **Linux user name:** Select this option if you want to use the already existing Linux user account.

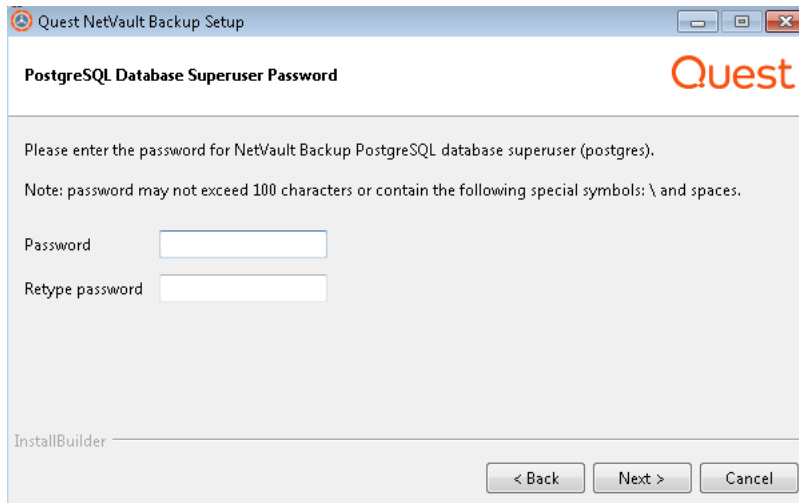
— or —

To create new Linux user account, refer to the corresponding operating system guide.

Click **Next** to continue.

- 12 When installing the NetVault Backup Server, the dialog box for Database Superuser password is displayed next. This dialog box is not displayed during client installations.

**Figure 9. PostgreSQL Database Superuser Password dialog box**



In the **Password** box, specify a password for the PostgreSQL database super user.

In the **Retype password** box, type the password again for confirmation.

For more information about specifying a password for the PostgreSQL database super user, see [Determine NetVault Backup name and password](#).

- 13 In the **Ready to Install** dialog box, review the installation parameters, and click **Next** to begin installation.  
If you want to change any installation parameter, click **Back**.
- 14 The installer begins to install the software. As the installation proceeds, the progress bar is updated in the Installation dialog box.
- 15 After the software is successfully installed on the machine, the Setup Completion dialog box is displayed. Click **Finish** to close the dialog box, and exit the installer.

# Installing NetVault Backup in text mode

The text mode is available on all supported operating systems, except Windows.

**i** | **NOTE:** You can exit the setup in text mode at any time before the installation starts by pressing Ctrl+C.

## To install NetVault Backup Server or Client in text mode:

- 1 Log on to the system with root-level access. Start a terminal session, and navigate to the directory in which the installation file resides.
- 2 To start the installer, type the following command:

```
./<installation file name> --mode text
```

**i** | **NOTE:**

- On Mac OS X, the installer is packaged as a disk image (.dmg) file. Before you can run the installer, you must mount the disk image by running the following command:

```
hdiutil attach path/to/NVBU_Installer_Name.dmg
```

After the image is mounted, you can start the installer by running the following command:

```
"/Volumes/NetVault Backup/<Name of the installer>.app/Contents/MacOS/installbuilder.sh" --mode text
```

After the installation completes, you can unmount the disk image by running the following command:

```
hdiutil detach /dev/diskWithInstallerImage
```

When running the installer on Mac OS X from a remote terminal (SSH or telnet), it may be necessary to use the `--mode text` option. Otherwise, the installer may run in full graphic mode without showing any output in the console.

- When installing NetVault Backup on Linux IA (Itanium), the installer shows 'unaligned access' warning messages. However, the installation completes successfully.

**Example warning messages:**

```
unaligned access to 0x6000000005642f7c, ip=0x2000000004dbe520
```

To suppress these warning messages, start the installer by running the following command:

```
prctl --unaligned=silent ./<installation file name> --mode text
```

Follow the instructions to complete the installation steps.

- 3 Language Selection

Please select the installation language

```
[1] English
```

```
[2] Simplified Chinese
```

```
[3] French
```

```
[4] German
```

```
[5] Japanese
```

```
[6] Korean
```

Please choose an option [1]:

Select the language for your NetVault Backup installation. To select English, press **1** or **Enter**. To select a different language, press the corresponding key.

- 4 The License Agreement screen is displayed next. Press **Enter** to read through the agreement.

Press **y** to accept the license agreement and continue.

**i** | **NOTE:** Before proceeding with the installation, ensure that you have thoroughly reviewed the license agreement.

- 5 Please specify the directory where NetVault Backup will be installed.

Installation Directory [/usr/netvault]:

The default installation path for NetVault Backup is as follows:

- **On Linux:** /usr/netvault
- **On Solaris:** /opt/netvault

To use the default path, press **Enter**.

To change the location, type the new path, and press **Enter**. If the specified path does not exist, it is automatically created during installation.

If the installation directory contains any files or directories, a warning is displayed:

The directory '/usr/software/netvault' already exists. All contents of this directory will be destroyed. Are you sure you want to continue? (y n) [n]

Press **y** to continue.

- 6 Please choose the NetVault Backup name for this machine.

Note: the NetVault Backup machine name can contain a maximum of 63 characters including uppercase letters (A-Z), lowercase letters (a-z), numbers (0-9), hyphens ("-"), underscores ("\_"), and periods (".").

Machine Name [<OS-assigned machine name>]:

By default, NetVault Backup uses the OS-assigned machine name. To select the default name, press **Enter**.

To assign a different name, type the name, and press **Enter**. For more information about machine names, see [Determine NetVault Backup name and password](#).

- 7 Please enter the NetVault Backup password for this machine.

Note: password may not exceed 100 characters or contain the following special symbols: \ and spaces.

Password:

Specify a password for the NetVault Backup machine, and press **Enter**.

The machine password is used while adding a NetVault Backup Client to the server. If no password is set during installation, NetVault Backup uses the system's root or administrator password. For more information about passwords, see [Determine NetVault Backup name and password](#).

Retype password:

Type the password again for confirmation, and press **Enter**.

- 8 When installing the NetVault Backup Server, you are prompted for the database directory. This step does not apply to client installations.

NetVault Backup Database Directory

Please specify the directory where NetVault Backup database will be stored.

The database may grow to a large size.

Database Directory [/usr/netvault/db]:

The default installation path for the NetVault Database is **/usr/netvault/db**.

To use the default path, press **Enter**.

To change the location, type the new path, and press **Enter**. If the specified path does not exist, it is automatically created during installation.

If the database directory contains any files or directories, a warning is displayed:

```
The directory '/usr/software/netvaultdb' already exists. All contents of this
directory will be destroyed. Are you sure you want to continue? (y n) [n]
```

Press **y** to continue.

- 9 When installing the NetVault Backup Server on Linux, specify the option for PostgreSQL Linux user account. For more information about NetVault Backup PostgreSQL Linux user account, see [Determine NetVault Backup PostgreSQL Linux user account](#).

```
Specify option for PostgreSQL Linux user account
```

```
[1] Allow NetVault Backup to create PostgreSQL Linux user
```

```
[2] Linux user name
```

```
Please choose an option [1]:
```

Press **Enter** if you want to select the default option.

Enter 2 if you want to use the already existing Linux user account. To create new Linux user account, refer to the corresponding operating system guide.

```
Linux user name [netvault-pgsql]:
```

Specify the Linux user name, and press **Enter**.

- 10 When installing the NetVault Backup Server, you are prompted for the database superuser password. This step does not apply to client installations. For more information about specifying a password for the PostgreSQL database super user, see [Determine NetVault Backup name and password](#).

```
Please enter the NetVault Backup PostgreSQL database superuser password.
```

```
Note: password may not exceed 100 characters or contain the following special
symbols: \ and spaces.
```

```
Password:
```

Specify a password for the PostgreSQL database super user, and press **Enter**.

```
Retype password:
```

Type the password again for confirmation, and press **Enter**.

- 11 In the **Ready to Install** screen, review the installation parameters, and press **Enter** to begin installation.
- 12 The installer begins to install the software. As the installation proceeds, the progress information is displayed in the terminal window.
- 13 After the software is successfully installed on the machine, a setup completion message is displayed.

# Installing NetVault Backup in unattended mode

The unattended mode is supported on all operating systems. When performing unattended installations, you can specify the installation options at the command line or in an option file.

An option file is a text file that provides answers to the questions that would be asked during the installation process. Each answer is stored as a value for a variable identified in the option file. You can save the option file in any directory and assign it any valid filename.

The installer uses the default values for options that are omitted (except for the password for PostgreSQL Database Superuser, which does not have a default value).

## **To install NetVault Backup Server or Client in unattended or silent mode:**

- 1 Log on to the system with administrator or root-level access.
- 2 Start a command prompt window or terminal session, and navigate to the directory in which the installation file resides.
- 3 Type the following command:

### **Linux- and UNIX-based systems:**

**i** **NOTE:** When installing NetVault Backup on Linux IA (Itanium), the installer shows 'unaligned access' warning messages. However, the installation completes successfully.

#### **Example warning messages:**

```
unaligned access to 0x6000000005642f7c, ip=0x2000000004dbe520
```

To suppress these warning messages, start the installer by running the following command:

```
prctl --unaligned=silent ./<Name of the installation file> --mode unattended <options>
```

— or —

```
prctl --unaligned=silent ./<Name of the installation file> --mode unattended --optionfile <filename>
```

```
./<Name of the installation file> --mode unattended <options>
```

— or —

```
./<Name of the installation file> --mode unattended --optionfile <filename>
```

### **Windows-based systems:**

```
<Name of the installation file> --mode unattended <parameter list>
```

— or —

```
<Name of the installation file> --mode unattended --optionfile <filename>
```

You can specify the following parameters at the command line or in the option file.

**i** **NOTE:** To access help on the installation options, you can run the installer with the `--help` option:

**On Linux and UNIX:** `./<Name of the installation file> --help`

**On Windows:** `<Name of the installation file> --help`



**Table 4. Installation options**

Option	Description
<pre>--unattendedmodeui &lt;interaction level&gt;</pre>	<p>Specifies the interaction level for the unattended installation.</p> <p>The allowed values are:</p> <ul style="list-style-type: none"> <li>• <b>none:</b> This is the default mode for unattended installations. In this mode, the installer does not display any prompts or progress information.</li> <li>• <b>minimal:</b> In this mode, the installer does not display any prompts, but it provides the progress information through pop-up windows.</li> <li>• <b>minimalWithDialogs:</b> In this mode, the installer displays some prompts, and it provides the progress information through pop-up windows.</li> </ul>
<pre>--optionfile &lt;filename&gt;</pre>	<p>Specifies the name of the option file. Provide the full path if the file does not reside in the current directory.</p>
<pre>--installer-language &lt;NetVault Backup language&gt;</pre>	<p>Specifies the language for your NetVault Backup installation. The supported languages are:</p> <ul style="list-style-type: none"> <li>• <b>en:</b> English</li> <li>• <b>zh_CN:</b> Simplified Chinese</li> <li>• <b>fr:</b> French</li> <li>• <b>de:</b> German</li> <li>• <b>ja:</b> Japanese</li> <li>• <b>ko:</b> Korean</li> </ul> <p>The default is English (en).</p>
<pre>--setup-type &lt;setup- type&gt;</pre>	<p>Specifies the setup type for NetVault Backup Server. The setup type can be:</p> <ul style="list-style-type: none"> <li>• <b>Standard:</b> This is a default option and enables you to use the NetVault Backup Server in standalone mode.</li> <li>• <b>MSP:</b> This option enables you to use NetVault Backup Server and provide backup as a service to clients or customers. The Managed Service Provider (MSP) option is supported on the Windows and Linux Server pure 64-bit versions.</li> </ul>
<pre>--prefix &lt;installation directory&gt;</pre>	<p>Specifies the installation path for NetVault Backup. If the path contains spaces, enclose it in quotation marks (" ").</p> <p>The default path is as follows:</p> <ul style="list-style-type: none"> <li>• <b>On Linux:</b> /usr/netvault</li> <li>• <b>On Windows:</b> "C:\Program Files\Quest\NetVault Backup" or "C:\Program Files (x86)\Quest\NetVault Backup"</li> </ul>
<pre>--logical-name &lt;NetVault Backup machine name&gt;</pre>	<p>Specifies the NetVault Backup machine name.</p> <p>By default, NetVault Backup uses the OS-assigned machine name. For more information about machine names, see <a href="#">Determine NetVault Backup name and password</a>.</p>
<pre>--password &lt;password&gt;</pre>	<p>Specifies the NetVault Backup machine password.</p> <p>The machine password is used while adding a NetVault Backup Client to the server. The password can contain a maximum of 100 characters. It cannot contain the following characters:</p> <p>\ and spaces</p> <p>For more information about passwords, see <a href="#">Determine NetVault Backup name and password</a>.</p> <p>If no password is set during installation, NetVault Backup uses the system's root or administrator password.</p>

**Table 4. Installation options**

Option	Description
<code>--db-dir &lt;NetVault Database installation&gt;</code>	<p>Specifies the installation path for NetVault Database. This parameter can only be specified for NetVault Backup Server installations.</p> <p>If the path contains spaces, enclose it in quotation marks (" ").</p> <p>The default path for NetVault Database is as follows:</p> <ul style="list-style-type: none"> <li>• <b>On Linux:</b> <code>/usr/netvault/db</code></li> <li>• <b>On Windows:</b> <code>"C:\Program Files\Quest\NetVault Backup\db"</code> or <code>"C:\Program Files (x86)\Quest\NetVault Backup\db"</code></li> </ul>
<code>--pg-linuxuser-option &lt;pg-linuxuser-option&gt;</code>	<p>Specifies the option for PostgreSQL Linux user account. For more information about NetVault Backup PostgreSQL Linux user account, see <a href="#">Determine NetVault Backup PostgreSQL Linux user account</a>. The default option will be selected if you do not provide the input here.</p> <p>Default: <code>auto</code></p> <p>Allowed: <code>auto custom</code></p>
<code>--pg-linuxuser-name &lt;pg-linuxuser-name&gt;</code>	<p>Required only when <code>--pg-linuxuser-option</code> is set to <code>custom</code>.</p> <p>Default: <code>netvault-pgsql</code></p>
<code>--pg-su-passwd &lt;password&gt;</code>	<p>Specifies the password for PostgreSQL Database Superuser. This parameter can only be specified for NetVault Backup Server installations.</p> <p>The password can contain a maximum of 100 characters. It cannot contain the following characters:</p> <p><code>\</code> and <code>spaces</code></p> <p>For more information about specifying a password for the PostgreSQL database super user, see <a href="#">Determine NetVault Backup name and password</a>.</p>

**i** | **NOTE:** When performing unattended installations, you can check the installer return code to verify whether the installation completed successfully. If the return code is zero (0), it implies that the installation is successful. A non-zero value indicates that the installation has failed. In such cases, you can examine the installation logs for details about the problem.

## Examples

This section provides some examples of using the NetVault Backup installer in unattended mode.

### Server installation

- To perform an uninterrupted installation of NetVault Backup Server using default values for all options, use the following command:

**Linux-based systems:**

```
./<Name of the installation file> --mode unattended --pg-su-passwd MyDbPassword
```

**Windows-based systems:**

```
<Name of the installation file> --mode unattended --pg-su-passwd MyDbPassword
```

- To specify a custom name and installation directory for a Windows-based NetVault Backup Server, use the following command:

```
<Name of the installation file> --mode unattended --prefix "D:\NetVault Backup" --logical-name TestServer --pg-su-passwd MyDbPassword
```

- To install the Japanese version of NetVault Backup Server on a Linux-based system, use the following command:

```
./<Name of the installation file> --mode unattended --installer-language ja  
--pg-su-passwd MyDbPassword
```

- To choose MSP as a setup type, use one of the following commands:

**Linux-based systems:**

```
./<Name of the installation file> --mode unattended --setup-type msp --  
pg-supasswd MyDbPassword
```

**Windows-based systems:**

```
<Name of the installation file> --mode unattended --setup-type msp --pg-  
supasswd MyDbPasswordClient installation
```

- To perform an uninterrupted installation of NetVault Backup Client using default values for all options, use the following command:

**Linux-based systems:**

```
./<Name of the installation file> --mode unattended
```

**Windows-based systems:**

```
<Name of the installation file> --mode unattended
```

- To specify a custom name and installation directory for a Windows-based NetVault Backup Client, use the following command:

```
<Name of the installation file> --mode unattended --prefix "D:\NetVault Backup"  
--logical-name Client-A
```

- To install the Japanese version of NetVault Backup Client on a Linux-based system, use the following command:

```
./<Name of the installation file> --mode unattended --installer-language ja
```

## Sample option files

This section provides some sample option files.

### Server installation

- The following file specifies all options for installing the English version of NetVault Backup on a Linux-based system:

```
prefix=/usr/NetVault Backup  
logical-name=TestServer  
password=MyPassword  
db-dir=/usr/TstDir/Db  
pg-su-passwd=MyDbPassword
```

- The following file specifies a custom name and installation directory for a Windows-based NetVault Backup Server:

```
prefix=D:\NetVault Backup  
logical-name=TestServer  
db-dir=D:\TstDir\Db  
pg-su-passwd=MyDbPassword
```

- The following file specifies the options for installing the Japanese version of NetVault Backup Server on a Linux-based system:

```
installer-language=ja
```

```
pg-su-passwd=MyDbPassword
```

## Client installation

- The following file specifies all options for installing the English version of NetVault Backup Client on a Linux-based system:

```
prefix=/usr/NetVault Backup
logical-name=Client-A
password=MyPassword
```

- The following file specifies a custom name and installation directory for a Windows-based NetVault Backup Client:

```
prefix=D:\NetVault Backup
logical-name=Client-A
```

- The following file specifies the options for installing the Japanese version of NetVault Backup Client on a Linux-based system:

```
installer-language=ja
```

# Installing NetVault Backup Client on Windows using Group Policy

This section includes the following topics:

- [Installing the software package using Group Policy](#)
- [Upgrading the software package](#)
- [Removing the software package](#)

## Installing the software package using Group Policy

In an Active Directory (AD) Domain, you can create a Group Policy Object (GPO) to install the NetVault Backup Client software on multiple machines in the domain.

### ***To install NetVault Backup Clients using Group Policy Objects:***

#### **1 Step 1: Set up a Windows Domain:**

- a Set up a machine as the Windows Domain Controller.
- b Add all the clients to the Domain.

For more information about setting up a Windows Domain, see the relevant Windows documentation.

#### **2 Step 2: Copy the NetVault Backup installation file to a shared folder:**

- a Log on to the Domain Controller as Administrator, and create a shared folder that is accessible to all machines in the domain.
- a Copy the installation file to the shared directory.

#### **3 Step 3: Create a Group Policy Object:**

- a Click **Start**, point to **Administrative Tools**, and then click **Group Policy Management**.
- b Right-click the domain, and click **Create a GPO in this domain, and Link it here**.
- c Type a name for the new policy (for example, NetVault Backup), and click **OK**.

- d In the left pane of the **Group Policy Management Console**, open the applicable nodes, and select the GPO. In the right-pane, go to the **Security Filtering** section.
- e By default, the policy is not applied to any client machines. To add a machine, click **Add**. In the dialog box that appears, click **Object Types**, and select **Computers** (if not already selected).
- f Select the machines on which you want to install NetVault Backup. Click **OK**.

#### 4 Step 4: Assign the package:

- a In the **Group Policy Management Console**, select the policy, and click **Edit**. Under **Computer Configuration**, expand **Software Settings**.
- b Right-click **Software installation**, point to **New**, and then click **Package**. In the **Open** dialog box, type the full UNC path of the shared installer package (for example, \\<file server>\<share>\<installation file name>), and click **Open**.

**i** | **NOTE:** Verify that you use the UNC path; do not use the **Browse** button to access the shared location.

- c In the **Deploy Software** dialog box, leave the **Assigned** option selected, and click **OK**.  
The NetVault Backup installation package is now listed in the right-pane of the **Group Policy Management Editor**.
- d Close the **Group Policy Management Editor** and the **Group Policy Management Console**.
- e When you restart the machine, NetVault Backup is automatically installed on the selected clients.

## Upgrading the software package

### *To upgrade the NetVault Backup software package:*

- 1 Click **Start**, point to **Administrative Tools**, and then click **Group Policy Management**.
- 2 Select the **Group Policy Object** that you used to deploy the package, and then click **Edit**.
- 3 In the **Group Policy Management Editor**, expand **Software Settings**.
- 4 Open the **Software installation** node.
- 5 In the right-pane of the **Group Policy Management Editor**, right-click the entry for NetVault Backup, point to **All Tasks**, and then click **Redeploy application**.
- 6 In the confirmation dialog box, click **Yes**.
- 7 Close the **Group Policy Management Editor** and the **Group Policy Management Console**.

## Removing the software package

### *To remove the assigned software package:*

- 1 Click **Start**, point to **Administrative Tools**, and then click **Group Policy Management**.
- 2 Select the Group Policy Object that you used to deploy the package, and then click **Edit**.
- 3 In the **Group Policy Management Editor**, expand **Software Settings**.
- 4 Open the **Software installation** node.
- 5 In the right-pane of the **Group Policy Management Editor**, right-click the entry for NetVault Backup, point to **All Tasks**, and then click **Remove**.
- 6 Do one of the following:
  - Click **Immediately uninstall the software from users and computers**, and then click **OK**.

- Click **Allow users to continue to use the software but prevent new installations**, and then click **OK**.
- 7 Close the **Group Policy Management Editor** and the **Group Policy Management Console**.

# Reviewing post-installation requirements

- [Platform-specific post-installation requirements](#)

## Platform-specific post-installation requirements

This section covers the requirements for the following platforms:

- [Linux](#)
- [RHEL 5.x](#)
- [Solaris 10 \(SPARC and x86-64\)](#)
- [Solaris 11 \(SPARC and x86-64\)](#)
- [Ubuntu](#)
- [Windows](#)
- [Windows 2008 R2](#)

## Linux

On Linux OS, verify that the following shared C libraries are available on the server and client systems:

- `libc.so.6`
- `libdl.so.2`

These libraries provide the standard library functions, including the “system calls” functions.

On systems that do not have these packages, NetVault Backup does not start after installation. In this scenario, run the following command from the NetVault Backup installation directory (`/usr/netvault/`, by default) to obtain a list of NetVault Backup dependencies and to determine any missing ones.

```
find ./|grep -v -E "pgAdmin3|stackbuilder|postgresql|lib/libssl|replaced/"|xargs  
file|grep 'shared object|executable'|cut -d: -f1|xargs ldd 2>/dev/null|grep -v  
'^\.|perl -pe 's/ *\$(.*)$//'|sort -u|grep "not found"|grep -v -E "PIC"
```

The missing dependencies are reported as “Not Found.”

The required files are available as RPM packages. You can install them using the RPM utility. For more information, see the man page for the `rpm` command. You can also use the configuration tool YaST (Yet another Setup Tool) to locate and install the packages. Once the tool finds the package containing the required file, select the **Install** command from the **Package** menu to install the file. For more information about YaST, see the user’s guide for this tool.

# RHEL 5.x

Create the following symbolic links:

- NetVault Backup Server (Hybrid and Pure x86-64):
  - `# ln -s /usr/netvault/dynlib/oca-libs/lib64/libcrypto.so.1.0.0 /lib64/libcrypto.so.1.0.0`
- NetVault Backup Client (Hybrid x86-32):
  - `# ln -s /lib/libssl.so.0.9.7a /lib/libssl.so.0.9.7`
  - `# ln -s /lib/libcrypto.so.0.9.7a /lib/libcrypto.so.0.9.7`
- NetVault Backup Client (Hybrid x86-64):
  - `# ln -s /lib/libssl.so.0.9.7a /lib/libssl.so.0.9.7`
  - `# ln -s /lib/libcrypto.so.0.9.7a /lib/libcrypto.so.0.9.7`
  - `# ln -s /lib64/libssl.so.0.9.7a /lib64/libssl.so.0.9.7`
  - `# ln -s /lib64/libcrypto.so.0.9.7a /lib64/libcrypto.so.0.9.7`
  - `# ln -s /usr/netvault/dynlib/oca-libs/lib64/libcrypto.so.1.0.0 /lib64/libcrypto.so.1.0.0`
- NetVault Backup Client (Pure x86-64):
  - `# ln -s /lib64/libssl.so.0.9.7a /lib64/libssl.so.0.9.7`
  - `# ln -s /lib64/libcrypto.so.0.9.7a /lib64/libcrypto.so.0.9.7`
  - `# ln -s /usr/netvault/dynlib/oca-libs/lib64/libcrypto.so.1.0.0 /lib64/libcrypto.so.1.0.0`

## Solaris 10 (SPARC and x86-64)

On Solaris 10, you must configure or use the **sgen** driver utility to add the client-attached library devices to the NetVault Backup Server.

**i** | **NOTE:** These steps are not required if the Solaris 10 client does not control a device.

### **To configure the sgen driver on Solaris 10 Clients:**

- 1 Log on to the machine to which the device is directly attached, and start a terminal session. To verify that the OS recognizes the device, type:

```
cfgadm -al
cfgadm -al -o show_FCP_dev XX:WWN
cfgadm -o force_update -c unconfigure/configure XX or XX:WWN or XX:WWN:LUN
```

- 2 Navigate to the following directory:

```
/kernel/drv/
```

- 3 Open the file **sgen.conf** for editing. Verify that the sgen driver is configured to attach to the target device. The "sgen" line of this file should look similar to the following:

```
name="sgen" parent="fp" target=0 lun=0;
```

Note the following:

- Fiber Channel devices must be bound with "WWN" entries. Therefore, the "sgen" line should look something like the following example:

```
name="sgen" parent="fp" target=0 lun=0
```



```
fc-port-wwn="1000000cc4c8m0";
```

- Editing the **sgen.conf** file may require that you reboot the target system.

4 Validate that the **sgen** driver has successfully created the necessary device files by:

- Step 1: Checking to ensure that the **“/devices”** directory exists:

```
/devices/pci@7c,0/pci1022,7458@2/pci1077,1401/fp@0,  
0/sgen@w1000000cc4c8m0
```

- Step 2: Checking to ensure that the **“/dev/scsi/changer”** directory contains the appropriate files and these files have been properly associated to the target device:

```
/dev/scsi/changer/c2t1000000cc4c8m0d0
```

5 Create a symbolic link in the **/dev** directory for the NetVault Backup device file associated with the hardware path used in the **/dev/scsi/changer** directory:

```
ln -s /devices/pci@7c,0/pci1022,7458@2/pci1077,  
1401/fp@0,0/sgen@w1000000cc4c8m0 /dev/nv0
```

6 Validate that the symbolic link was successfully created, and that it has the correct permissions, by issuing the following command from the prompt:

```
/dev/nv0 -> pci@7c,0/pci1022,7458@2/pci1077,1401/fp@0,  
0/sgen@w1000000cc4c8m0,0:changer
```

## Solaris 11 (SPARC and x86-64)

On Solaris 11, the OS does not correctly update the machine configuration to attach the library arm to the **sgen** driver after NetVault Backup updates the **sgen.conf** file. You can use the following procedure to update the machine configuration.

- ⓘ | **NOTE:** The exact steps may vary slightly depending on your machine settings.  
For more information, see the *Oracle Solaris Administration Guide*.

### To correctly update the machine configuration:

1 Log on to the Solaris machine as root, and start a terminal session. Verify that the device is present:

```
cfgadm -al
```

Verify that the driver aliases are okay.

2 Create a copy of the **driver\_aliases** file. Remove the **sgen** driver and install it again:

- ⓘ | **NOTE:** : You may have to copy `/kernel/drv/sgen.conf` to `/etc/drivers/drv`.

```
cd /etc
```

```
cp driver_aliases driver_aliases.BKP
```

```
rem_drv sgen
```

```
add_drv -m '* 0666 bin bin' -i \"scsiclass,08\" \"scsa,0.8.bmpt\" sgen
```

3 Verify that the driver is configured:

```
cd /etc
```

```
grep sgen driver_aliases
```

If the output of the **grep** command shows that the aliases `“scsiclass,08”` and `“scsa,0.8.bmpt”` are assigned to the **sgen** driver, the driver is properly configured.

```
sgen "scsiclass,08"
```

```
sgen "scsa,0.8.bmpt"
```

# Ubuntu

On Ubuntu, follow these steps to modify the startup script for NetVault Backup.

These steps are required because the **/var/lock** folder resides on a temporary file system on Ubuntu and gets emptied each time the operating system is shut down.

- 1 Open the file **startup.sh** file. You can find this file in the directory **/usr/netvault/etc/**.
- 2 Locate the following section in the file:

```
if [$OS = Linux]
then
touch /var/lock/subsys/netvault
```

- 3 Add line 3 to this section:

```
if [$OS = Linux]
then
[ -d /var/lock/subsys ] || mkdir -p /var/lock/subsys
touch /var/lock/subsys/netvault
```

# Windows

On Windows, the locally attached backup devices must not be under the control of the Windows Removable Storage service.

**To disable the Windows Remote Storage Manager on systems with locally attached backup devices:**

- 1 Log on as an Administrator-level user.
- 2 Right-click **My Computer**, and select **Manage** to open the **Computer Management** window.
- 3 Expand the **Storage** node to display the local device. Right-click the device, and select **Properties**.
- 4 On the **General** tab, clear the **Enable library** check box. Click **Apply**, and then **OK** to close the dialog box.

# Windows 2008 R2

Sometimes, the Network Manager Process reports “unreachable host” error messages when you try to add the client to the NetVault Backup Server. To avoid these error messages, Quest recommends you to install latest Windows updates on Windows 2008 R2 clients.

# Upgrading NetVault Backup

- [Upgrade considerations](#)
- [Preparing for an upgrade](#)
- [Upgrading NetVault Backup in GUI mode](#)
- [Upgrading NetVault Backup in text mode](#)
- [Upgrading NetVault Backup in unattended mode](#)
- [Migrating NetVault Backup Server from Hybrid to Pure environment](#)
- [Upgrading licensed plug-ins](#)

## Upgrade considerations

**i** **NOTE:** While upgrading from NetVault Backup 12.3 to NetVault Backup 12.4, you may face authentication issues at few places while performing various operations. This is due to a change in the algorithm from NetVault Backup 12.3 to NetVault Backup 12.4. For more information, see [Upgrading from NetVault Backup 12.3](#).

Before you upgrade your NetVault Backup system, review the following notes.

- When you perform an upgrade, select the server or client version based on the current installation type.
- Upgrade the NetVault Backup Server before upgrading any client system.
- A NetVault Backup Server can only support clients of the same version as itself or older. The NetVault Backup Client software version cannot be higher than the NetVault Backup Server software version.
- Starting with 10.0, the NetVault Backup Server installation is only supported on Windows and Linux operating systems. You can no longer install the NetVault Backup Server on UNIX and Mac OS X operating systems.

For information about supported operating system versions, see the *Quest NetVault Backup Compatibility Guide* available at <https://support.quest.com/technical-documents>.

- Upgrade to NetVault Backup 12.4 and later is only supported from NetVault Backup 10.0 and later.
- When you upgrade NetVault Backup on Linux-based systems, it removes all start and stop links to the netvault init script before resetting them to the runlevels of the new version. If you want to retain any user-defined links to the init script after an upgrade, do not use the word “netvault” in the link name.
- To simultaneously upgrade the NetVault Backup Client software on multiple machines, you can use the push installation method of NetVault Backup WebUI. You can use this method for both new and upgrade installations. For more information about this method, see the *Quest NetVault Backup Administrator's Guide*.
- During upgrade, the language must be the same as the original language when NetVault Backup was first installed. If the language during upgrade differs from the original language, the default administrator account will not migrate successfully and the NetVault Backup instance may get locked.
- Before upgrading NetVault Backup to version 11.4.5 or later, you must upgrade the attached DR appliance to version 4.0.3 or later.

- If an external installation of RDA version 3.2 is present, either remove it or upgrade it to the RDA version 4.0.3041.0 or later.
- All the DR devices that were attached to the previous version NetVault Backup, must be reachable and online during the upgrade process.
- DR devices that are either not reachable or running on DR OS version less than 4.0.3 are grouped under Orphan Devices. Remove these devices first and then re-add to NetVault Backup after the upgrade.
- To ensure the smooth operation of NetVault Backup, after upgrading NetVault Backup to version 12.4, you must clear the browser cache.
- To upgrade NetVault Backup server to version 12.4 or later, log in with the user account used for installing the previous version of the NetVault Backup, and run the setup. The PostgreSQL upgrade fails if you upgrade NetVault Backup using a different user account.
- There is an expected latency of a few minutes to load NetVault Backup WebUI pages such as Dashboard, View Reports, and Create Backup Job, immediately after NetVault Backup installation or upgrade.

## Upgrading from NetVault Backup 12.3

Due to a change in the encryption and decryption algorithm in NetVault Backup 12.3, you may experience authentication-related issues after upgrading from NetVault Backup 12.3.0.15 to NetVault Backup 12.3.0.16, or to NetVault Backup 12.4.

See the following table for known issues and their possible workarounds.

**Table 5. Authentication error workarounds**

Impacted Area	Resolution
If “Bulk Blank” for Tape Library or Virtual Tape Library (VTL) fails with an authentication error...	Reset the password using the same existing password. For more information, see “Changing NetVault Backup password” in the <i>NetVault Backup 12.4 Administration Guide</i> .
If “Expire All” for DR fails with an authentication error...	Reset the password using the same existing. For more information, see “Changing NetVault Backup password” in the <i>NetVault Backup 12.4 Administration Guide</i> .
If backups are not cataloged after an upgrade...	Reconfigure catalog search with the same existing password. For more information, see “Configuring catalog search” in the <i>NetVault Backup 12.4 Administration Guide</i> .
If CLI utilities fails with an authentication error...	Reset the password of the NetVault Backup user that you used for CLI using the same existing password. For more information, see “Modifying a user account” in the <i>NetVault Backup 12.4 Administration Guide</i> .
If VMware backups or restores fail with an authentication error in the logs...	Reset the password for vCenter or ESX Server using the Edit Server dialog box. For more information, see “Reconfiguring a server” in the <i>NetVault Backup Plug-in for VMware 12.3 User’s Guide</i> .

If you experience authentication issues in other areas of NetVault Backup, reconfigure the password and perform the action again. If the issue continues, contact NetVault Backup Support.

## Preparing for an upgrade

- **Back up the NetVault Database:** The first step in preparing for an upgrade of NetVault Backup Server is to perform a backup of the existing NetVault Database. If an upgrade is unsuccessful, you can reinstall the previous version of NetVault Backup and recover the NetVault Database to enable troubleshooting of the failed upgrade without interfering with an existing backup schedule.

For more information about backing up the NetVault Database with the Plug-in *for Databases*, see *Quest NetVault Backup Built-in Plug-ins User’s Guide*.

When you restore data from the NetVault Database, the logs are restored to the directory **logs\_restored\_<YYYYMMDD>**.

- **Close all other NetVault Backup applications:** Before starting the upgrade procedure, close all other NetVault Backup applications, such as NetVault Configurator, Workstation Client, and PostgreSQL pgAdmin. If you have opened any configuration file, make sure that the file is closed before you start the upgrade procedure. On Windows, it may also be necessary to close Event Viewer before performing an upgrade. On Windows, close all the command prompts where any of the NetVault directories are browsed.
- **Disable anti-virus software:** We recommend that you disable the anti-virus software before installing or upgrading NetVault Backup. The installation process may conflict with the anti-virus software and various NetVault Backup operations may fail to function properly after the installation if you do not disable the anti-virus software.

## Upgrading NetVault Backup in GUI mode

The graphical mode is available on all supported operating systems that provide a graphical environment. This mode requires GTK packages or X Window System libraries on Linux- and UNIX-based systems.

### *To upgrade NetVault Backup Server or Client in graphical mode:*

- 1 Log on to the system with administrator or root-level access, and navigate to the directory in which the installation file resides.
- 2 Double-click the installation file.
- 3 In the Language Selection dialog box, select the language to be used in the upgraded installation. Click **OK**.

**i** | **NOTE:** By default, in the Language Selection dialog box, the language of an existing NetVault Backup installation is displayed and the same language is displayed for upgraded installation as well. The language must be the same as the original language when NetVault Backup was first installed. If the language during upgrade differs from the original language, the default administrator account will not migrate successfully and the NetVault Backup instance may get locked.

- 4 In the Welcome dialog box, review the notes, and click **Next** to continue.
- 5 In the **License Agreement** dialog box, select the **I accept the agreement** option if you accept all the terms.

**i** | **NOTE:** Before proceeding with the installation, make sure that you have thoroughly reviewed the license agreement.

Click **Next** to continue.

- 6 In the Upgrade Confirmation dialog box, click **Yes**.

Before upgrading the NetVault Backup Server, make sure that a backup of NetVault Database has been performed.

- 7 In the **Ready to Upgrade** dialog box, click **Yes** to begin installation.
- 8 The installer begins to install the software. As the installation proceeds, the progress bar is updated in the Installation dialog box.
- 9 After the software is successfully installed on the machine, the Setup Completion dialog box is displayed. Click **Finish** to close the dialog box, and exit the installer.

# Upgrading NetVault Backup in text mode

The text mode is available on all supported operating systems, except Windows.

**i** | **NOTE:** You can exit the setup in text mode at any time before the installation starts by pressing Ctrl+C.

## **To upgrade NetVault Backup Server or Client in text mode:**

1 Log on to the system with root-level access. Start a terminal session, and navigate to the directory in which the installation file resides.

2 To start the installer, type the following command:

```
./<installation file name> --mode text
```

Follow the instructions to complete the installation steps.

3 The License Agreement screen is displayed. Press **Enter** to read through the agreement.

Press **y** to accept the license agreement and continue.

**i** | **NOTE:** Before proceeding with the installation, make sure that you have thoroughly reviewed the license agreement.

4 In the Upgrade Confirmation screen, press **y** to continue.

5 In the **Ready to Upgrade** screen, press **Enter** to begin installation.

6 The installer begins to install the software. As the installation proceeds, the progress information is displayed in the terminal window.

7 After the software is successfully installed on the machine, a setup completion message is displayed.

# Upgrading NetVault Backup in unattended mode

## **To upgrade NetVault Backup Server or Client in unattended or silent mode:**

1 Log on to the system with administrator or root-level access.

2 Start a command prompt window or terminal session, and navigate to the directory in which the installation file resides.

3 Type the following command:

**Linux- and UNIX-based systems:**

```
./<Name of the installation file> -mode unattended
```

**Windows-based systems:**

```
<Name of the installation file> -mode unattended
```

**i** | **NOTE:** When performing unattended installations, you can check the installer return code to verify whether the installation completed successfully. If the return code is zero (0), it implies that the installation is successful. A non-zero value indicates that the installation has failed. In such cases, you can examine the installation logs for details about the problem.

# Migrating NetVault Backup Server from Hybrid to Pure environment

Currently you can install NetVault Backup Server in Hybrid and Pure environment on supported Windows and Linux operating systems. This feature helps you migrate from Windows or Linux NetVault Backup Server Hybrid (32-bit) to a Pure environment (64-bit). This migration lets you use all of the available system resources of a 64-bit OS, which increases the capability to use NetVault Backup.

- NetVault Backup supports migration on the servers where NetVault Backup hybrid is installed on Windows or Linux 64-bit Operating System (OS). For more information, see [Migrating NetVault Backup Server in GUI mode](#) or [Migrating NetVault Backup Server in unattended mode](#).
- If NetVault Backup Server Hybrid is installed on 32-bit OS, you must migrate this hybrid environment to a 64-bit OS. For more information, see <https://support.quest.com/netvault-backup/kb/261119/migrating-netvault-server>.

## Migration Prerequisites

- Operating System (OS) must be 64 bit.
- Migration is supported from NetVault Backup 11.4.5 or later version. For migrating an earlier version of NetVault Backup Server Hybrid environment to Pure environment, you must first upgrade the NetVault Backup Server to 11.4.5 or later hybrid version.

## Migrating NetVault Backup Server in GUI mode

### *To install NetVault Backup Server in graphical mode:*

- 1 Log on to the system with administrator or root-level access, and navigate to the directory in which the installation file resides.
- 2 Double-click the Pure (64 bit) installation file.
- 3 In the **Language Selection** dialog box, select the language for your NetVault Backup installation.

The available options are:

- English
- Simplified Chinese
- French
- German
- Japanese
- Korean

The default selection is English.

Click **OK**.

- 4 The installer identifies previous installation of NetVault Backup Server in hybrid environment, and confirms to proceed upgrade of Pure (64 bit) installation. In the **Migration mode** confirmation dialog box, Click **Yes**.
- 5 In the Welcome dialog box, review the notes, and click **Next** to continue.
- 6 In the **License Agreement** dialog box, select the **I accept the agreement** option if you accept all the terms.

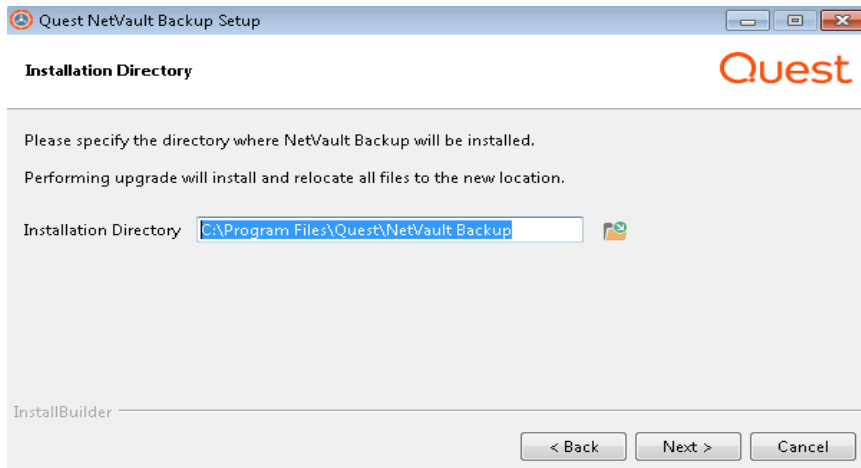
**NOTE:** Before proceeding with the installation, make sure that you have thoroughly reviewed the license agreement.

Click **Next** to continue.

- 7 In the **Installation Directory** dialog box, specify the installation path.

**NOTE:** During migration, the Installation Directory option is applicable only on Windows Servers.

**Figure 10. Installation Directory dialog box**



The default installation path for NetVault Backup is same as your existing installation path.

**For example:** On a Windows machine, if the existing NetVault Backup Hybrid installation path is `C:\Program Files (x86)\Quest\NetVault Backup` then during migration to Pure64 environment the default installation path is `C:\Program Files\Quest\NetVault Backup`.

To use the default path, click **Next**.

To change the location, type the new path, and click **Next**. If the specified path does not exist, it is automatically created during installation. You can also click **Browse**, and select the target directory from the Explorer window.

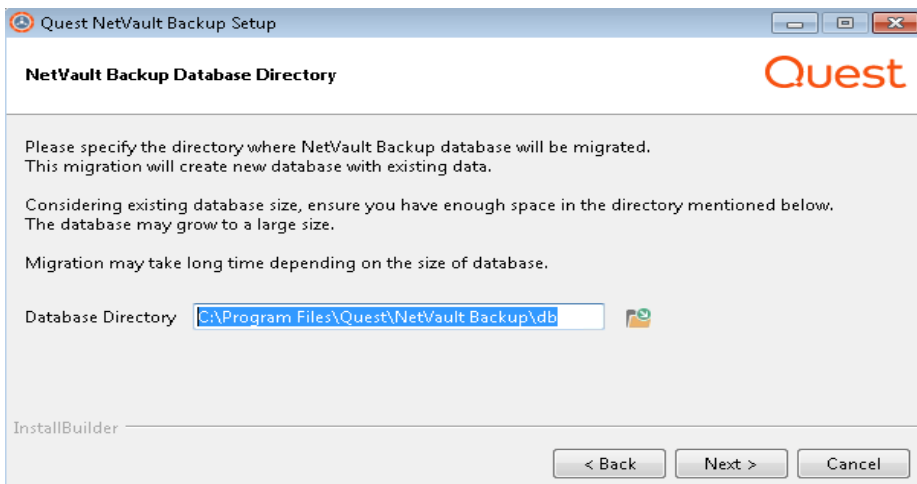
If you specify a new installation directory other than the existing installation directory, where the new installation directory contains any files or directories, a warning is displayed:

The directory you have selected is not empty. If you continue the installation, everything in the directory will be deleted. Is it OK to install into this directory and delete the existing contents?

- 8 In the **NetVault Backup Database Directory** dialog box, specify the database directory path.



Figure 11. NetVault Backup Database Directory dialog box



The default database directory path for NetVault Backup is same as your existing database path.

**For example:** On Windows machine, if the existing database path of NetVault Backup in Hybrid environment is `C:\Program Files (x86)\Quest\NetVault Backup\db` then during migration to Pure64 environment the default database path is `C:\Program Files\Quest\NetVault Backup\db`. On a Linux machine, the default path for both Hybrid and Pure 64 environments is `/usr/netvault/db`.

To use the default path, click **Next**.

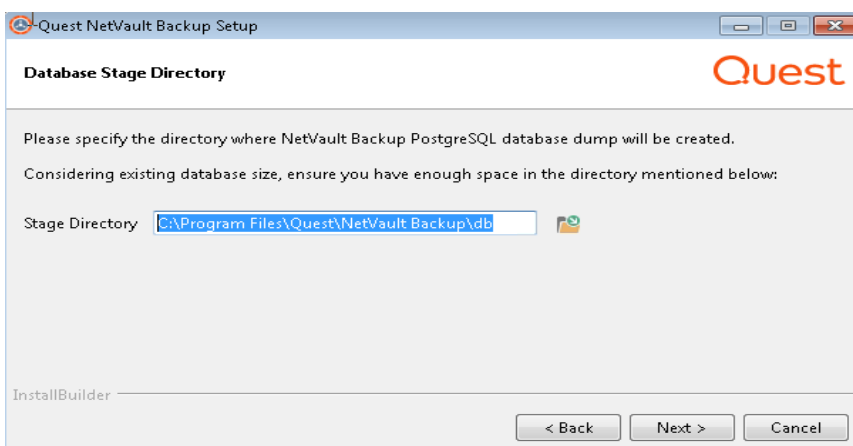
To change the location, type the new path, and click **Next**. If the specified path does not exist, it is automatically created during installation. You can also click **Browse**, and select the target directory from the Explorer window.

If you specify a new database directory other than the existing database directory, where the new database directory contains any files or directories, a warning is displayed:

The directory you have selected is not empty. If you continue the installation, everything in the directory will be deleted. Is it OK to install into this directory and delete the existing contents?

- 9 In the **Database Stage Directory** dialog box, specify the **Stage Directory** path.

Figure 12. NetVault Backup Database Stage Directory



In this directory NetVault Backup PostgreSQL database dump is created, this directory is created temporary for the PostgreSQL migration process. Once the migration is successful this temporary directory gets deleted, however, if migration is not successful this directory is not deleted and can be used for troubleshooting purpose.

The default stage directory path for NetVault Backup is same as your existing database path.

**For example:** On Windows machine, if the existing database path of NetVault Backup in Hybrid environment is `C:\Program Files (x86)\Quest\NetVault Backup\db` then during migration to Pure 64 environment the default database path is `C:\Program Files\Quest\NetVault Backup\db`. On a Linux machine, the default path for both Hybrid and Pure 64 environments is `/usr/netvault/db`.

To use the default path, click **Next**.

To change the location, type the new path, and click **Next**. If the specified path does not exist, it is automatically created during installation. You can also click **Browse**, and select the target directory from the Explorer window.

- 10 In the **NetVault Backup Upgrade** dialog box, review the migration parameters and click **Next**. If you want to change any migration parameter, click **Back**.

**i** **NOTE:** If you have installed additional plug-ins, all the additional plug-ins are un-installed during the migration process. Once NetVault Backup Pure 64 is successfully installed, you need to again install additional Pure Plug-ins.

Jobs created using end of life plug-ins will not work.

- 11 In the **Ready to Upgrade** dialog box, click **Yes** to begin installation.

## Migrating NetVault Backup Server in unattended mode

### **To upgrade NetVault Backup Server in unattended or silent mode:**

- 1 Log on to the system with administrator or root-level access.
- 2 Start a command prompt window or terminal session, and navigate to the directory in which the installation file resides.
- 3 Type the following command:

#### **Linux-based systems:**

```
./<Name of the installation file> --mode unattended <options>
```

— or —

```
./<Name of the installation file> --mode unattended --optionfile <filename>
```

#### **Windows-based systems:** To continue with the default parameters during upgrade

```
<Name of the installation file> --mode unattended
```

#### **Windows-based systems:** To change default parameter value during upgrade

```
<Name of the installation file> --mode unattended <parameter list>
```

— or —

```
<Name of the installation file> --mode unattended --optionfile <filename>
```

You can specify the following parameters at the command line or in the option file.

**i** **NOTE:** To access help on the installation options, you can run the installer with the `--help` option:

**On Windows:** `<Name of the installation file> --help`

**On Linux:** `./<Name of the installation file> --help`

**Table 6. Installation options**

Option	Description
<code>--unattendedmodeui &lt;interaction level&gt;</code>	<p>Specifies the interaction level for the unattended installation.</p> <p>The allowed values are:</p> <ul style="list-style-type: none"> <li>• <b>none:</b> This is the default mode for unattended installations. In this mode, the installer does not display any prompts or progress information.</li> <li>• <b>minimal:</b> In this mode, the installer does not display any prompts, but it provides the progress information through pop-up windows.</li> <li>• <b>minimalWithDialogs:</b> In this mode, the installer displays some prompts, and it provides the progress information through pop-up windows.</li> </ul>
<code>--optionfile &lt;filename&gt;</code>	<p>Specifies the name of the option file. Provide the full path if the file does not reside in the current directory.</p>
<code>--new-install-dir &lt;new- install-dir&gt;</code>	<p>Windows only. Specifies the installation path for NetVault Backup. If the path contains spaces, enclose it in quotation marks (" ").</p> <p>The default installation path for NetVault Backup is same as your existing installation path.</p> <p><b>For example:</b> On Windows machine, if the existing installation path of NetVault Backup in Hybrid environment is "C:\Program Files (x86)\Quest\NetVault Backup" then during migration to Pure 64 environment the default installation path is "C:\Program Files\Quest\NetVault Backup"</p>
<code>--new-db-dir &lt;new-db- dir&gt;</code>	<p>Specifies the installation path for NetVault Database. This parameter can only be specified for NetVault Backup Server installations.</p> <p>If the path contains spaces, enclose it in quotation marks (" ").</p> <p>The default database directory path for NetVault Backup is same as your existing database path.</p> <p><b>For example:</b> On Windows machine, if the existing database path of NetVault Backup in Hybrid environment is "C:\Program Files (x86)\Quest\NetVault Backup\db" then during migration to Pure64 environment the default database path is "C:\Program Files\Quest\NetVault Backup\db".</p> <p>On a Linux machine, the default path for both Hybrid and Pure 64 environments is /usr/netvault/db.</p>
<code>--db-backup-dir &lt;db- backup-dir&gt;</code>	<p>Specifies the installation path for NetVault Database. This parameter can only be specified for NetVault Backup Server installations.</p> <p>If the path contains spaces, enclose it in quotation marks (" ").</p> <p>The default stage directory path for NetVault Backup is same as your existing database path.</p> <ul style="list-style-type: none"> <li>• <b>For example:</b> On Windows machine, if the existing database path of NetVault Backup in Hybrid environment is "C:\Program Files (x86)\Quest\NetVault Backup\db" then during migration to Pure64 environment the default database path is "C:\Program Files\Quest\NetVault Backup\db".</li> <li>• On a Linux machine, the default path for both Hybrid and Pure 64 environments is /usr/netvault/db.</li> </ul>

**i** **NOTE:** When performing unattended installations, you can check the installer return code to verify whether the installation is completed successfully. If the return code is zero (0), it implies that the installation is successful. A non-zero value indicates that the installation has failed. In such cases, you can examine the installation logs for details about the problem.

If you have installed additional plug-ins, all the additional plug-ins are un-installed during the migration process. Once NetVault Backup Pure 64 is successfully installed, you need to again install additional Pure Plug-ins.

Jobs created using end of life plug-ins will not work.

## Migrating NetVault Backup Server from 32-bit OS to 64-bit OS

### *To migrate NetVault Backup Server from 32-bit OS to 64-bit OS*

- 1 Move existing Hybrid NetVault Backup Server from 32-bit OS to new 64-bit OS. For more information <https://support.quest.com/netvault-backup/kb/261119/migrating-netvault-server>
- 2 After moving NetVault Backup Server to 64-bit OS, if NetVault Backup Server (Hybrid) version is earlier than NetVault Backup Server (Hybrid) version 11.4.5, you need to first upgrade it to NetVault Backup Server Hybrid environment version 11.4.5 or later.
- 3 Ensure NetVault Backup Server (Hybrid) is up and running before you migrate to Pure 64 environment.
- 4 Migrate NetVault Backup Server from Hybrid to Pure 64 environment using the latest version of Pure 64 NetVault Backup Server setup. For more information see, [Migrating NetVault Backup Server from Hybrid to Pure environment](#)

## Upgrading licensed plug-ins

The procedures for installing and removing the licensed plug-ins are covered in the respective plug-in user's guides. The standard method for upgrading any optional plug-in is to install the latest version over the previous version of the plug-in. Any changes or additional steps required for an upgrade are described in the Release Notes for that version of the plug-in.

---

# Licensing NetVault Backup

- [About licensing NetVault Backup](#)
- [Obtaining the machine ID](#)
- [Obtaining permanent license keys](#)
- [Installing product license keys](#)

## About licensing NetVault Backup

The evaluation license for NetVault Backup is valid for 30 days. To continue using the software after the expiry of the evaluation period, you must install the permanent license keys for the server and installed plug-ins.

The server is licensed based on the NetVault Backup Server Edition and the additional options that you have purchased. The clients require a permanent license key only if any licensed plug-in has been installed on the machine.

The permanent license keys for NetVault Backup are tied to a particular machine where they are installed using the Machine ID. To obtain the permanent license key, locate the relevant Machine ID, and submit the request using the online licensing form.

## Obtaining the machine ID

**To obtain the machine ID for a NetVault Backup machine:**

- 1 Start the NetVault Backup WebUI, and in the Navigation pane, click **Manage Clients**.
- 2 In the **NetVault Backup Clients** table, select the client, and click **Manage**.
- 3 On the **View Clients** page, note the machine ID exactly as it appears in the **Client Summary** table.

## Obtaining permanent license keys

**To obtain permanent license keys for NetVault Backup:**

Submit the request using the on-line product licensing form at: <https://support.quest.com/>

# Installing product license keys

You can install the license keys by using the configuration wizard. You can also install the license keys from the **Manage Clients** or **Change Settings** page.

- i** | **NOTE:** The permanent license keys for NetVault Backup are tied to the Machine ID of the NetVault Backup machine. While installing the license keys, verify that you select the correct server or client machine for which the license was obtained.

These procedures are described in the following sections:

- [Installing license keys using the configuration wizard](#)
- [Installing license keys from the Manage Clients page](#)
- [Installing license keys from the Change Settings page](#)

## Installing license keys using the configuration wizard

**To install the license keys using the configuration wizard:**

- 1 In the Navigation pane, click **Guided Configuration**, and then on the **NetVault Configuration Wizard** page, click **Install Licenses**.
- 2 In the **NetVault Backup Clients** table, select the client on which you want to install the license key, and click **Next**.
- 3 In the **Enter the license key string** box, type or copy and paste the license key. Click **Apply**.  
After the key is applied successfully, a message is displayed

## Installing license keys from the Manage Clients page

**To install the license keys from the Manage Clients page:**

- 1 In the Navigation pane, click **Manage Clients**. In the **NetVault Backup Clients** table, select the client on which you want to install the license key, and click **Manage**.
- 2 On the **View Clients** page, click **Install License**.
- 3 In the **Install License** dialog box, type or copy and paste the license key, and click **Apply**.  
After the key is installed successfully, a message is displayed on the page. Click the Close button to close the dialog box.

## Installing license keys from the Change Settings page

**To install the license keys from the Change Settings page:**

- 1 In the Navigation pane, click **Change Settings**, and on the **Configuration** page, click **Server Settings**.
- 2 On the **NetVault Server Settings** page, click **Install License**.
- 3 In the **Install License** dialog box, type or copy and paste the license key, and click **Apply**.  
After the key is installed successfully, a message is displayed on the page. Click the Close button to close the dialog box.

---

# Removing NetVault Backup

- [Removing NetVault Backup Server or Client](#)

## Removing NetVault Backup Server or Client

When you install the NetVault Backup Server or Client software on a machine, the installation process creates an uninstaller executable file named “**uninstall**” under the NetVault Backup installation directory. You can use this executable to remove NetVault Backup. The installation process also creates a data file named “uninstall.dat,” which contains information about the installation. To properly uninstall the software, both the uninstaller executable and the uninstall.dat files must exist on the machine.

**i** | **NOTE:** When you remove NetVault Backup, the backup indexes are deleted from the NetVault Database. However, the actual backed up data remains intact on the media.

### **To remove NetVault Backup Server or Client:**

- 1 Log on to the system with administrator or root-level access, and navigate to NetVault Backup installation directory.
- 2 Use any of the following methods to run the uninstaller.

Mode	Description
GUI mode	<p>Double-click the file named “uninstall.”</p> <p>The filename extension is “.exe” on Windows and “.app” on Mac OS X.</p>
Text mode	<p>Depending on the operating system, type the following command:</p> <ul style="list-style-type: none"> <li>• <b>Linux and UNIX:</b> <code>./uninstall --mode text</code></li> <li>• <b>Mac OS X:</b>  <code>/path/to/nvbu_install_dir/uninstall.app/Contents/MacOS/installbuilder.sh --mode text</code></li> </ul> <p><b>NOTE:</b></p> <ul style="list-style-type: none"> <li>• When uninstalling NetVault Backup on Linux IA (Itanium), the uninstaller shows “unaligned access” warning messages. However, the uninstallation completes successfully.</li> </ul> <p><b>Example warning messages:</b></p> <pre>unaligned access to 0x6000000005642f7c, ip=0x2000000004dbe520</pre> <p>To suppress these warning messages, start the uninstaller by running the following command:</p> <pre>prctl --unaligned=silent ./uninstall --mode text</pre> <ul style="list-style-type: none"> <li>• You can omit the <code>--mode text</code> option when running the uninstaller on a local Mac OS X machine. When running the uninstaller on Mac OS X from a remote terminal (SSH or telnet), it may be necessary to use the <code>--mode text</code> option. Otherwise, the installer may run in full graphic mode without showing any output in the console.</li> </ul>
Unattended mode	<p>Depending on the operating system, type the following command:</p> <ul style="list-style-type: none"> <li>• <b>Linux and UNIX:</b> <code>./uninstall --mode unattended</code></li> <li>• <b>Mac OS X:</b>  <code>/path/to/nvbu_install_dir/uninstall.app/Contents/MacOS/installbuilder.sh --mode unattended</code></li> <li>• <b>Windows:</b> <code>uninstall --mode unattended</code></li> </ul> <p><b>NOTE:</b> When uninstalling NetVault Backup on Linux IA (Itanium), the uninstaller shows “unaligned access” warning messages. However, the uninstallation completes successfully.</p> <p><b>Example warning messages:</b></p> <pre>unaligned access to 0x6000000005642f7c, ip=0x2000000004dbe520</pre> <p>To suppress these warning messages, start the uninstaller by running the following command:</p> <pre>prctl --unaligned=silent ./uninstall --mode unattended</pre>

- i NOTE:** On Windows, you can also use **Programs and Features** to uninstall NetVault Backup:
- 1 Open **Programs and Features (Start > Control Panel > Programs > Programs and Features)**.
  - 2 In the list of installed programs, select **NetVault Backup**, and then click **Uninstall**.
  - 3 In the confirmation dialog, click **Yes** to remove the program.

The uninstaller generates a log file named `netvault_{GUID}_uninstall.log` in the system temporary directory. If the uninstallation fails, the uninstaller may not generate the regular log file. Instead, it may leave an intermediate log file named `bitrock_installer.log` or `bitrock_installer_nnn.log` in the system temporary directory.



# Troubleshooting

- [Common errors](#)

## Common errors

This section describes some common errors and their solutions. It includes the following topics:

- [NetVault Backup Service fails to start on Windows](#)
- [NetVault Backup Service fails to start after the machine is restarted](#)
- [NetVault Backup Service starts, but stops immediately on Linux](#)
- [Installation aborted on Windows after installer fails to delete an existing directory](#)
- [Installation of hybrid package fails silently on a 64-bit Linux machine](#)
- [Upgrade fails on a client running Plug-in for DB2](#)

## NetVault Backup Service fails to start on Windows

### Description

The NetVault Backup Service fails to start on a Windows-based NetVault Backup Server.

### Symptom

Check the Windows Event Viewer to see if it displays the following message:

PDT FATAL: lock file "postmaster.pid" already exists

### Solution

NetVault Backup cannot start if the PostgreSQL database that is used to store the system data does not start. To correct this issue, delete the "**postmaster.pid**" file from the location referenced in the log and restart the NetVault Backup Server.

## NetVault Backup Service fails to start after the machine is restarted

### Description

After restarting the machine, the NetVault Backup Service sometimes fails to start on a Windows-based NetVault Backup Server.

### Symptom

Check the Windows Event Viewer to see if it displays the following message:

FATAL: could not create any TCP/IP sockets " for a PostgreSQL source

## Solution

NetVault Backup cannot start if the PostgreSQL database that is used to store the system data does not start. To correct this issue, start the Task Manager, and click **Show processes from all users**. You can see multiple instances of **postgres32.exe** running on the system. Select any one instance of this process, and click **End Process** to remove all instances of **postgres32.exe**. Then, start the NetVault Backup Service.

# NetVault Backup Service starts, but stops immediately on Linux

## Description

On a Linux-based machine, the NetVault Backup Service starts, and then stops immediately.

## Symptom

No error messages are displayed.

## Solution

This issue can occur if the PostgreSQL service cannot resolve the host name **localhost**, and fails to start.

Check the `/etc/hosts` file, and if the file does not contain an entry for **localhost**, add the entry.

# Installation aborted on Windows after installer fails to delete an existing directory

## Description

On a Windows-based machine, installation fails if the installer is unable to remove the existing contents from the installation directory.

## Symptom

The installer reports a preinstall script error and cancels the installation process.

## Solution

This error can occur if there are any open files in the installation directory. If a file is locked by the Windows OS, the installer cannot delete it.

When this error occurs, do the following:

- Check if the installation folder contains any open files, and try to close the files or programs that use the files. Delete the files and run the installer.
- If you are unable to delete the files, restart the machine, and then run the installer.

# Installation of hybrid package fails silently on a 64-bit Linux machine

## Description

When installing the hybrid package of NetVault Backup on a 64-bit Linux machine, the installation process fails.

## Symptom

No errors are reported; the installation process fails silently.

## Solution

This issue can occur if the required 32-bit libraries are not installed on the 64-bit Linux machines. If the installer cannot find the required libraries on the system, it may fail to run.

Try installing the software after installing the required libraries. For more information about the requirements, see [Platform-specific requirements](#).

# Upgrade fails on a client running Plug-in *for DB2*

## Description

Upgrade fails on a Windows-based NetVault Backup Server or Client on which the Plug-in *for DB2* is running.

## Symptom

Upgrade fails because the installer is unable to delete the library files in the **Windows\System32** folder due to sharing violations.

## Solution

The Plug-in *for DB2* causes this problem. When you run a DB2 backup or restore job, the DB2 Server process invokes the shared library used by the Plug-in *for DB2*. After the backup or restore job completes, the DB2 Server process does not unload the library and release the shared memory. During upgrade, the installer is unable to overwrite the library files because they are in use. So, the process fails.

To successfully upgrade the NetVault Backup Server or Client software, do the following:

- 1 Restart the DB2 Server. This step is necessary to unload the plug-in library and release the shared memory.
- 2 Restart the NetVault Backup Service.
- 3 Run the upgrade process.

Quest provides software solutions for the rapidly-changing world of enterprise IT. We help simplify the challenges caused by data explosion, cloud expansion, hybrid datacenters, security threats, and regulatory requirements. We are a global provider to 130,000 companies across 100 countries, including 95% of the Fortune 500 and 90% of the Global 1000. Since 1987, we have built a portfolio of solutions that now includes database management, data protection, identity and access management, Microsoft platform management, and unified endpoint management. With Quest, organizations spend less time on IT administration and more time on business innovation. For more information, visit [www.quest.com](http://www.quest.com).

## Technical support resources

Technical support is available to Quest customers with a valid maintenance contract and customers who have trial versions. You can access the Quest Support Portal at <https://support.quest.com>.

The Support Portal provides self-help tools you can use to solve problems quickly and independently, 24 hours a day, 365 days a year. The Support Portal enables you to:

- Submit and manage a Service Request.
- View Knowledge Base articles.
- Sign up for product notifications.
- Download software and technical documentation.
- View how-to-videos.
- Engage in community discussions.
- Chat with support engineers online.
- View services to assist you with your product.