

Toad® Data Modeler 6.4

Release Notes

Wednesday, April 11, 2018

These release notes provide information about the Toad® Data Modeler release.

- [About Toad Data Modeler](#)
- [New in Toad Data Modeler 6.4](#)
- [Resolved issues](#)
- [Known issues](#)
- [System requirements](#)
- [Supported database platforms](#)
- [Product licensing](#)
- [Getting started with Toad Data Modeler 6.4](#)
- [Globalization](#)
- [About Us](#)

About Toad Data Modeler

Toad Data Modeler helps organizations create, maintain and document their database systems with an easy-to-use graphical interface into new or existing database structures. Toad Data Modeler enables users to reverse engineer database structures, update models, design and generate SQL, compare models and generate alter scripts, create HTML or RTF reports, in addition to versioning of database designs and creation of to-do lists.

Toad Data Modeler 6.4 is a minor release, with enhanced features and functionality. See [General features](#) and [Resolved issues](#) for more information.

Toad Data Modeler is released in 32-bit and 64-bit versions. The 64-bit version of the application has a significantly higher memory limit which should resolve several common issues incl. out of memory errors, which occurred when working with complex models.

However, in order to reverse engineer databases that require a client you need a corresponding version of the client, i.e. 32-bit or 64-bit.

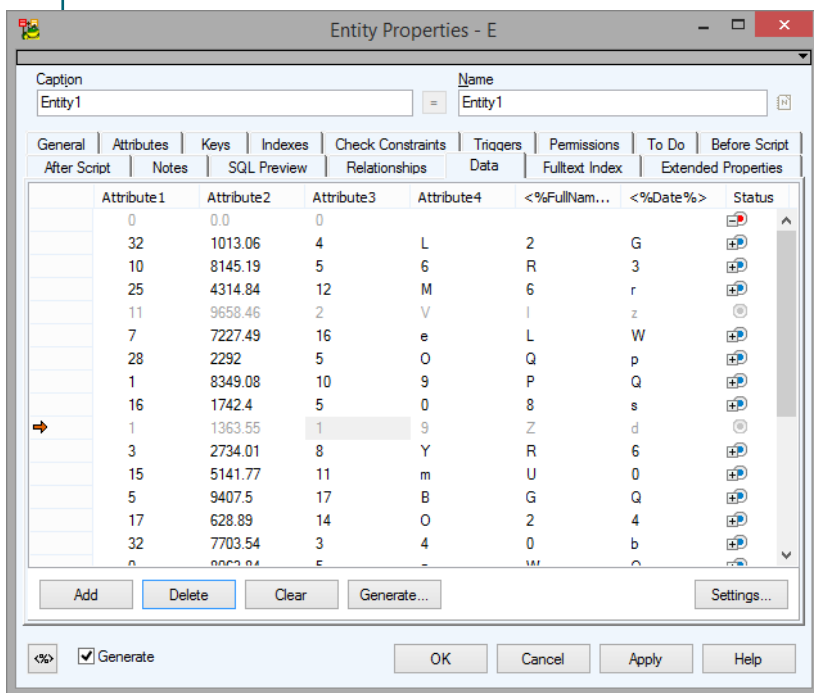
New in Toad Data Modeler 6.4

General features

Data Generation for Microsoft SQL Server

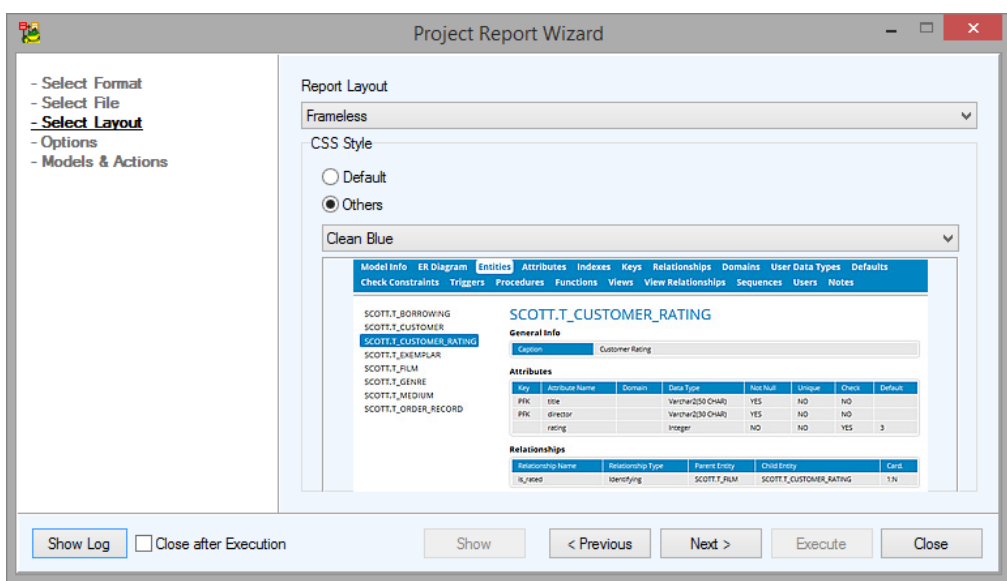
- Generate your data for Microsoft SQL Server models easily. Data generation is supported for SQL Server 2005 and onwards
- Setup your **Attributes** and switch to **Data** tab to generate your data
- Click **Add** to add one record, click **Generate** to add a specified number of new records
- Click **Delete** to remove the selected record and **Clear** to clear out all your generated data. Cleared data appears grayed out
- Click **Settings** to disable/enable attributes and adjust minimum and maximum values for generation of data for each column (attribute) for the current model
- Click **Settings | Options | Model | Physical Model | Microsoft SQL Server | Generating Data** to adjust default data generation settings for all MS SQL Server models. When you change any of these default values it will be carried on to all your SQL Server models

TIP: Click **<%>** to add application variables in **Attributes** in order to use them in your generated data



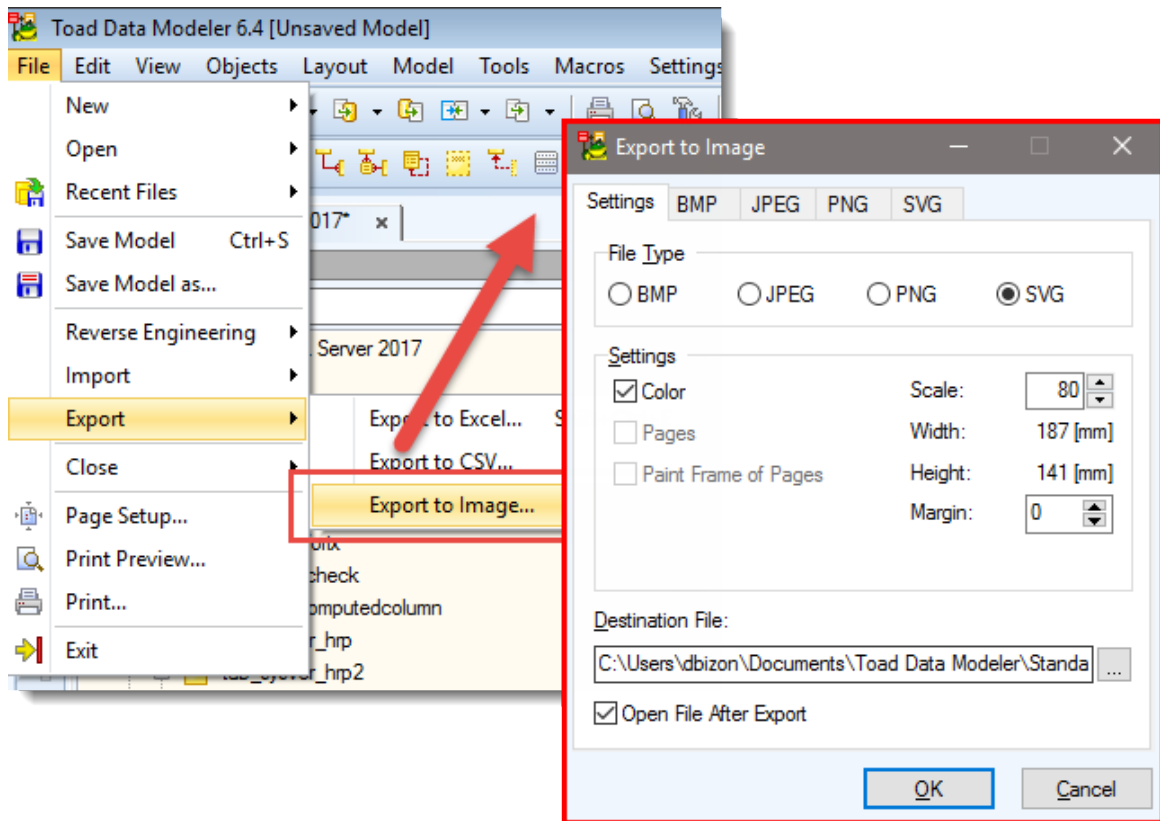
Project Reporting

- Now you can easily create a report for your Toad Data Modeler projects
- Right-click your project in **Application View** and select **Report**
- Select the desired format for your report
- Publish to Intelligence Central or to a folder
- Choose your layout and style for the report and preview the look below
- In **Options** select what you want to include in your report
- In **Models & Actions** select which models you want to include and which **Model Action** you want to perform
- After clicking **Execute** the report will be created in Intelligence Central or your local destination folder



Export to SVG

- Click **File | Export to Image** to export to an XML based vector image format SVG
- Adjust common **Settings** for image export and SVG specific settings in **SVG**
- Click OK to export your model to *.SVG image

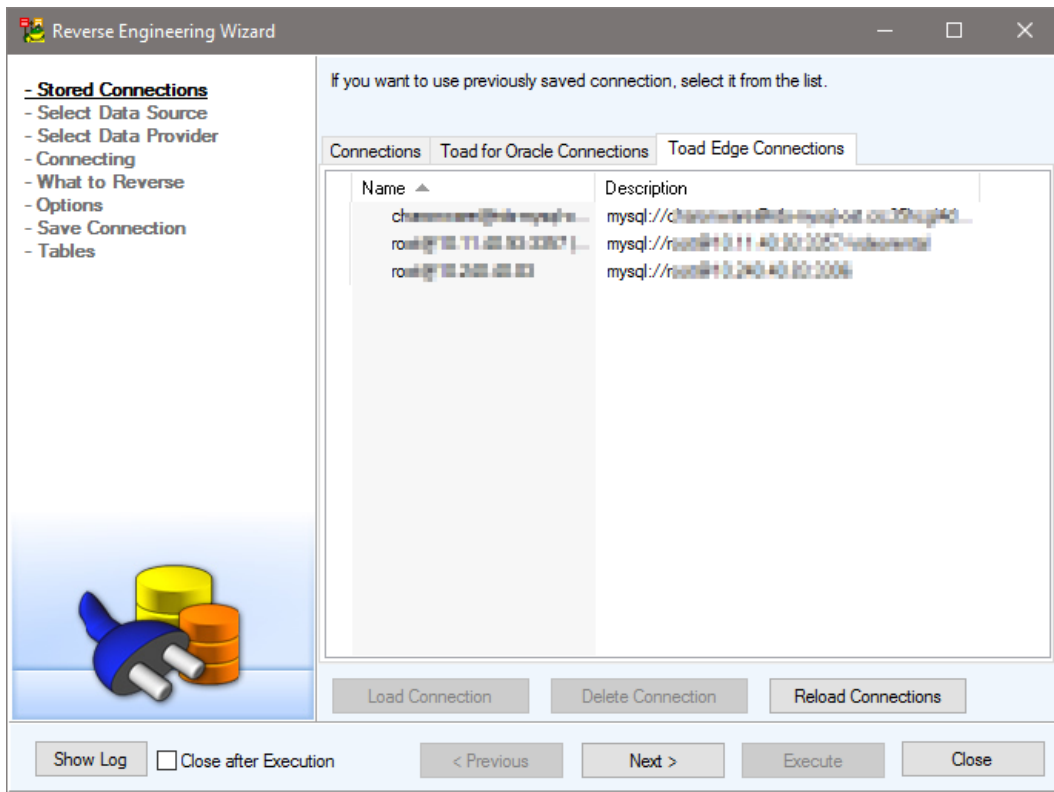


Workspace Layout Copy

- With Toad Data Modeler 6.4 you can easily save layouts as files and load them later
- Right-click into your **Designer** and select **Workspace Layout | Save to File** or **Load from File** to save or load a layout into a *.txwl file

Integration with Toad Edge™

- Set the path to Toad Edge and other integration settings in **Settings | Options | Toad Edge Integration**
- You can share your Toad Edge connections with Toad Data Modeler and use them in **Reverse Engineering Wizard | Toad Edge Connections**
- You can also use Toad Edge as the default editor for PostgreSQL and MySQL scripts



Database features

Microsoft SQL Server 2017

- SQL Server 2017 is now fully supported
- Database settings are located in **Settings | Options | Model | Physical Model | Microsoft SQL Server | Microsoft SQL Server 2017**
- Reverse Engineering, Change Script and DDL Script Generation are supported

Amazon Redshift 1.0

- Amazon Redshift 1.0 is now fully supported
- Database settings are placed in **Settings | Options | Model | Physical Model | Amazon Redshift**
- Reverse Engineering and DDL Script Generation are supported

PostgreSQL 10

- PostgreSQL 10 is now fully supported
- Database settings are located in **Settings | Options | Model | Physical Model | PostgreSQL** respectively

- Reverse Engineering, Change Script and DDL Script Generation are supported

Aurora PostgreSQL 9.5

- Aurora PostgreSQL 9.5 is now fully supported
- Database settings are placed in **Settings | Options | Model | Physical Model | Aurora PostgreSQL** respectively
- Reverse Engineering, Change Script and DDL Script Generation are supported

EDB Advanced Server 10

- EDB Advanced Server 10 is now supported
- Database settings are placed in **Settings | Options | Model | Physical Model | EDB Advanced Server**
- Reverse Engineering, Change Script and DDL Script Generation are supported

For more information on supported databases see the list of [Supported database platforms](#)

Deprecated Features

Deprecated databases

- You will still be able to open and create models of these databases but you will be notified that they are not maintained anymore
- Support of the following databases has been deprecated:
 - IBM DB2 8 (UDB)
 - IBM DB2 LUW 9.1
 - IBM DB2 z/OS 9
 - Microsoft Access 2000-2003
 - Microsoft Azure SQL Database V2
 - Microsoft SQL Server 2000
 - Oracle 9i
 - Sybase ASE 12.5, 15.0
 - PostgreSQL 8.1, 8.2, 8.3, and 8.4

Deprecated operating systems

- Toad Data Modeler will not be tested on and maintained for the following operating systems:
 - Microsoft Vista
 - Microsoft Server 2008 R1

Resolved issues

The following is a list of issues addressed in this release.

Resolved Issue	Issue ID
Issue when updated or added information to attributes was getting lost during Excel import has been fixed.	3821/4134632
Interval for drag'n'dropping of attributes has been modified.	3819/4133479
List Index of Bounds(0) error on merging two models when one of them is not in the root project folder has been fixed.	3883
Syntax highlighting now works correctly in Model Properties and SQL Preview.	4131, 4026
Changing a relation type is now possible via scripts.	4005/4175751
Conversion from a logical model as been fixed.	3968/4168064
Indexes for MS SQL Server are now always generated using CLUSTERED or NONCLUSTERED clauses.	3943
Logical Model Explorer now updates correctly when pulling from remote repository.	3881
Automatic generation for MS SQL Server has been implemented.	3473/ 3645825
Overflow error while converting variant of types on MySQL has been fixed.	4228/4229255
Foreign keys are now paired correctly when "Pair Primary Keys Regardless of Names option" is checked.	4029/4127586
Issue with autoincrements set in child attributes was fixed.	3905/4155864
Two new Workspace functions (GetWorkSpaceShapeByParentId (ParentBaseID) and GetWorkSpaceShapeByParentId(ParentBaseID, Order)) have been added.	3887
Issue with replacing title image in reports has been fixed.	3758/4122076
Support for range types since PostgreSQL 9.2 has been added.	3539
Random data generation has been implemented	2601/3645825
Error message in Model Update wizard has been fixed	3942/4165772

Known issues

The following is a list of issues, including those attributed to third-party products, known to exist at the time of release.

Issue	Issue ID
PEREntityPG92 record in Reference Guide is not correct	TDM-3351

System requirements

Before installing Toad Data Modeler 6.4, ensure that your system meets the following minimum hardware and software requirements.

System requirements

	Minimal Requirements	Optimal
Memory	1 GB	4 GB
Hard Disk Space	400 MB	1 GB
Operating System	Microsoft Windows 10 (64-bit) Microsoft Windows 8.1 PRO (64-bit) Microsoft Windows 8 PRO (64-bit) Microsoft Windows Server 2016 (64-bit) Microsoft Windows Server 2012 (64-bit) Microsoft Windows Server 2008 R2 (64-bit) Microsoft Windows 7 (32-bit or 64-bit) * *For Toad Data Modeler 64-bit version, only 64-bit version of the operating system can be used.	

i | **Note:** Microsoft .NET Framework version 3.5 is required on first application start.

Virtual appliances

Review the following information about using Toad Data Modeler in virtual environments:

Requirement	Details
Application	Toad Data Modeler has been tested for Citrix support on the Citrix XenApp 6.5.
Desktop (VDI)	Issues during printing using virtual printers - The problem occurs only in case of print from a local machine (all printers from local machine are visible on vWorkspace). If the virtual printer is installed on vWorkspace directly, the issue will not occur.
Server	Oracle VM 3.0 Toad Data Modeler has been tested with ESXi VMware 5.5.

Toad Data Modeler may work correctly in virtual environments other than the tested ones. In case of virtual servers, support for Toad Data Modeler is provided on the basis of supported operating systems.

Cloud database services

Toad Data Modeler supports the following cloud-based database services:

- Oracle Database as a Service

Upgrade and compatibility

It is not possible to open models created in Toad Data Modeler 6.4 in versions earlier than 6.0.

Version 5.2 introduced new system of relationship lines. Models created in version 5.1 and lower are automatically converted to the newer format. Backup your models prior to opening them in version 5.2 or higher.

Do not open and re-save models originally created in a higher version of Toad Data Modeler in a lower version of Toad Data Modeler.

Supported database platforms

Supported model types

- Logical
- Universal
- Physical

Supported databases

- Amazon® Aurora MySQL 5.6
- Amazon® Aurora PostgreSQL 9.5
- Amazon® Redshift 1.0
- IBM® DB2® z/OS® 10, 11
- IBM® DB2® LUW 9.5, 9.7, 10.1, 10.5, 11.1
- Greenplum Database® 4.1, 4.2
- Ingres 9.3, 10.0
- EDB Postgres Advanced Server 10
- Microsoft® Access® 2007-2010
- Microsoft® Azure® SQL Database V12
- Microsoft® SQL Server® 2005, 2008, 2012, 2014, 2016, 2017
- MySQL 5.0, 5.1, 5.5, 5.6, 5.7
- Oracle® 10g, 11g R1, 11g R2, 12c R1, 12c R2
- PostgreSQL 9.0, 9.1, 9.2, 9.3, 9.4, 9.5, 10
- SQLite 3.7
- SAP® SQL Anywhere 17

- SAP® ASE 16.0
- Sybase® ASE 15.7
- Sybase® IQ 15.2
- Sybase® SQL Anywhere 11
- Teradata 13
- Vertica Database 8.0
- Other (Universal Model)

i Note: For more information about the level of support please see **Help**, section **Introduction | Supported Databases**.

Product licensing

To activate a purchased commercial license

1. Open Toad Data Modeler.
2. Select **Help | Licensing**.

Getting started with Toad Data Modeler 6.4

Upgrade and installation instructions

The Toad Data Modeler release package contains the following products:

- Installation file of Toad Data Modeler (MSI)
- Product Documentation, including:
 - Release Notes (PDF)
 - Installation Guide (PDF)

Installation Instructions

Refer to Toad Data Modeler [Installation Guide](#) for installation instructions.

Additional resources

If applicable, point to related references, provide a list of corresponding documents, videos, or identify the community where additional information can be obtained. Otherwise, delete this section.

Additional information is available from the following:

- [Online product documentation](#)
- [Toad World community](#)

Globalization

This section contains information about installing and operating this product in non-English configurations, such as those needed by customers outside of North America. This section does not replace the materials about supported platforms and configurations found elsewhere in the product documentation.

This release is Unicode-enabled and supports any character set. In this release, all product components should be configured to use the same or compatible character encodings and should be installed to use the same locale and regional options. This release is targeted to support operations in the following regions: North America, Western Europe and Latin America, Central and Eastern Europe, Far-East Asia, Japan.

The release is localized to the following languages: Chinese (Simplified), Chinese (Traditional), Czech, Hebrew, Italian, Portuguese (Brazil), Russian, Spanish.

This release has the following known capabilities or limitations: Localized support for HTML and RTF/PDF reports in several languages will be distributed via TDM Community.

Available dictionaries: Chinese (Simplified and Traditional), Czech, Hebrew, Hindi, Punjabi, Russian, Spanish, Brazilian Portuguese and Italian

About Us

We are more than just a name

We are on a quest to make your information technology work harder for you. That is why we build community-driven software solutions that help you spend less time on IT administration and more time on business innovation. We help you modernize your data center, get you to the cloud quicker and provide the expertise, security and accessibility you need to grow your data-driven business. Combined with Quest's invitation to the global community to be a part of its innovation, and our firm commitment to ensuring customer satisfaction, we continue to deliver solutions that have a real impact on our customers today and leave a legacy we are proud of. We are challenging the status quo by transforming into a new software company. And as your partner, we work tirelessly to make sure your information technology is designed for you and by you. This is our mission, and we are in this together. Welcome to a new Quest. You are invited to Join the Innovation.

Our brand, our vision. Together.

Our logo reflects our story: innovation, community and support. An important part of this story begins with the letter Q. It is a perfect circle, representing our commitment to technological precision and strength. The space in the Q itself symbolizes our need to add the missing piece — you — to the community, to the new Quest.

Technical Support Resources

For sales or other inquiries, visit www.quest.com/company/contact-us.aspx or call +1 949 754-8000.

Technical support is available to Quest customers with a valid maintenance contract and customers who have trial versions. You can access the Quest Support Portal at <https://support.quest.com>.

The Support Portal provides self-help tools you can use to solve problems quickly and independently, 24 hours a day, 365 days a year. The Support Portal enables you to:

- Submit and manage a Service Request
- View Knowledge Base articles
- Sign up for product notifications
- Download software and technical documentation
- View how-to-videos
- Engage in community discussions
- Chat with support engineers online
- View services to assist you with your product

Copyright

Copyright 2018 Quest Software Inc. ALL RIGHTS RESERVED.

This guide contains proprietary information protected by copyright. The software described in this guide is furnished under a software license or nondisclosure agreement. This software may be used or copied only in accordance with the terms of the applicable agreement. No part of this guide may be reproduced or transmitted in any form or by any means, electronic or mechanical, including photocopying and recording for any purpose other than the purchaser's personal use without the written permission of Quest Software Inc.

The information in this document is provided in connection with Quest Software products. No license, express or implied, by estoppel or otherwise, to any intellectual property right is granted by this document or in connection with the sale of Quest Software products. EXCEPT AS SET FORTH IN THE TERMS AND CONDITIONS AS SPECIFIED IN THE LICENSE AGREEMENT FOR THIS PRODUCT, QUEST SOFTWARE ASSUMES NO LIABILITY WHATSOEVER AND DISCLAIMS ANY EXPRESS, IMPLIED OR STATUTORY WARRANTY RELATING TO ITS PRODUCTS INCLUDING, BUT NOT LIMITED TO, THE IMPLIED WARRANTY OF MERCHANTABILITY, FITNESS FOR A PARTICULAR PURPOSE, OR NON-INFRINGEMENT. IN NO EVENT SHALL QUEST SOFTWARE BE LIABLE FOR ANY DIRECT, INDIRECT, CONSEQUENTIAL, PUNITIVE, SPECIAL OR INCIDENTAL DAMAGES (INCLUDING, WITHOUT LIMITATION, DAMAGES FOR LOSS OF PROFITS, BUSINESS INTERRUPTION OR LOSS OF INFORMATION) ARISING OUT OF THE USE OR INABILITY TO USE THIS DOCUMENT, EVEN IF QUEST SOFTWARE HAS BEEN ADVISED OF THE POSSIBILITY OF SUCH DAMAGES. Quest Software makes no representations or warranties with respect to the accuracy or completeness of the contents of this document and reserves the right to make changes to specifications and product descriptions at any time without notice. Quest Software does not make any commitment to update the information contained in this document.

If you have any questions regarding your potential use of this material, contact:

Quest Software Inc.
Attn: LEGAL Dept
4 Polaris Way
Aliso Viejo, CA 92656

Refer to our Web site (www.quest.com) for regional and international office information.

Patents

Quest Software is proud of our advanced technology. Patents and pending patents may apply to this product. For the most current information about applicable patents for this product, please visit our website at www.quest.com/legal.

Trademarks

Quest, and the Quest logo are trademarks and registered trademarks of Quest Software Inc. in the U.S.A. and other countries. For a complete list of Quest Software trademarks, please visit our website at www.quest.com/legal. All other trademarks, servicemarks, registered trademarks, and registered servicemarks are the property of their respective owners.