

Toad® Data Modeler 6.4

Installation Guide



Copyright

Copyright 2018 Quest Software Inc. ALL RIGHTS RESERVED.

This guide contains proprietary information protected by copyright. The software described in this guide is furnished under a software license or nondisclosure agreement. This software may be used or copied only in accordance with the terms of the applicable agreement. No part of this guide may be reproduced or transmitted in any form or by any means, electronic or mechanical, including photocopying and recording for any purpose other than the purchaser's personal use without the written permission of Quest Software Inc.

The information in this document is provided in connection with Quest Software products. No license, express or implied, by estoppel or otherwise, to any intellectual property right is granted by this document or in connection with the sale of Quest Software products. EXCEPT AS SET FORTH IN THE TERMS AND CONDITIONS AS SPECIFIED IN THE LICENSE AGREEMENT FOR THIS PRODUCT, QUEST SOFTWARE ASSUMES NO LIABILITY WHATSOEVER AND DISCLAIMS ANY EXPRESS, IMPLIED OR STATUTORY WARRANTY RELATING TO ITS PRODUCTS INCLUDING, BUT NOT LIMITED TO, THE IMPLIED WARRANTY OF MERCHANTABILITY, FITNESS FOR A PARTICULAR PURPOSE, OR NON-INFRINGEMENT. IN NO EVENT SHALL QUEST SOFTWARE BE LIABLE FOR ANY DIRECT, INDIRECT, CONSEQUENTIAL, PUNITIVE, SPECIAL OR INCIDENTAL DAMAGES (INCLUDING, WITHOUT LIMITATION, DAMAGES FOR LOSS OF PROFITS, BUSINESS INTERRUPTION OR LOSS OF INFORMATION) ARISING OUT OF THE USE OR INABILITY TO USE THIS DOCUMENT, EVEN IF QUEST SOFTWARE HAS BEEN ADVISED OF THE POSSIBILITY OF SUCH DAMAGES. Quest Software makes no representations or warranties with respect to the accuracy or completeness of the contents of this document and reserves the right to make changes to specifications and product descriptions at any time without notice. Quest Software does not make any commitment to update the information contained in this document.

If you have any questions regarding your potential use of this material, contact:

Quest Software Inc.
Attn: LEGAL Dept
4 Polaris Way
Aliso Viejo, CA 92656

Refer to our Web site (www.quest.com) for regional and international office information.

Patents

Quest Software is proud of our advanced technology. Patents and pending patents may apply to this product. For the most current information about applicable patents for this product, please visit our website at www.quest.com/legal.

Trademarks

Quest, and the Quest logo are trademarks and registered trademarks of Quest Software Inc. in the U.S.A. and other countries. For a complete list of Quest Software trademarks, please visit our website at www.quest.com/legal. All other trademarks, servicemarks, registered trademarks, and registered servicemarks are the property of their respective owners.

Contents

Copyright	2
Getting Started	4
Pre-Installation	4
Toad Data Modeler Freeware	5
Freeware Version Limitations	5
Functionality Restrictions	5
System Requirements	6
Virtual Appliances	7
Supported Databases	7
Details of Database Support	8
Installation	11
Upgrade	14
Side-by-Side Installation	17
Silent Installation	20
Properties	20
Examples	20
Uninstallation	21
Trial Version Information	22
Limitations of Trial Version	22
Functionality Restrictions	22
Default Locations	23
After Installation	23
After First Run	24
About Us	26
Technical Support Resources	26
Index	27

Getting Started

Open and unzip the installation package that contains:

- Installation file (MSI)
- Release Notes (PDF)
- Installation Guide (PDF)

Pre-Installation

1. Starting with Toad Data Modeler 5.4, all databases are now installed with the application. You can enable/disable them after installation in the application itself.
2. To install Toad Data Modeler successfully, **Administrator privileges** are necessary.
3. Toad Data Modeler supports side-by-side installation.
 - **Upgrade** – New version of Toad Data Modeler is installed to the same folder where the previous version was installed.
 - **Side-by-side Installation** - New version of Toad Data Modeler is installed to another location.
4. Limitations of trial version: 30 - day trial period and multiple features limited to a maximum of 25 entities.
5. Do NOT open and resave models originally created in a developmentally higher version of Toad Data Modeler (e.g. in v. 5.2.x) in lower version of Toad Data Modeler (e.g. in v. 5.0.5).
6. Version 5.2 contains new system of relationship lines. Models created in version 5.1 and lower are automatically converted to the newer format. Backup your models prior to opening them in version 5.2 or newer.
7. Do NOT install commercial version to BETA version folders. BETA uses different folders for configuration files and other default directories than Toad Data Modeler Commercial version. You can install and use both versions on one computer. However, Do NOT install commercial version to BETA version folders.
8. Import and export of settings between Toad Data Modeler versions is possible (see **Settings Menu | Options | Import** and **Export** buttons.)

Toad Data Modeler Freeware

i **Important:** Toad Data Modeler Freeware:

- expires on June 1, 2019 or 380 days after first run.
- has some limitations. For more information see the list of limitations in **Installation Guide**.

Freeware Version Limitations

Freeware version of Toad® Data Modeler does not require licensing.

Functionality Restrictions

Freeware version of Toad Data Modeler has the following restrictions:

- **Save Model** – You can save a model with max 25 entities.
- **Preview** - You can preview a model with max 25 entities.
- **Print** – You can print a model with max 25 entities.
- **Export to Graphic File** – You can export a model with max 25 entities to graphic file.
- **Alter Report** – You can generate alter report for a model with max 25 entities.
- **Report** – PDF reports with watermark are limited to a maximum of 25 entities. Number of reported other objects is not limited. HTML and RTF reports cannot be generated.
- **XSL Transformation Report** – You can generate the XSL Transformation report only for first 25 entities of the model. Other objects (procedures, functions etc.) don't have any limitation.
- **SQL/DDL Script Generation** – You can generate SQL/DDL script only for first 25 entities of the model. Other objects (procedures, functions etc.) don't have any limitation.
- **Change Script Generation** – This feature is not available at all.
- **Reverse Engineering** - Reversing database schema is limited to 25 entities. Other objects have no limitation.
- **Undo** - Only one step back is available in Freeware version.

System Requirements

Before installing Toad Data Modeler, ensure that your system meets the following minimum hardware and software requirements.

	Minimal Requirements	Optimal
Memory	1 GB	4 GB
Hard Disk Space	400 MB	1 GB
Operating System	Microsoft Windows 10 (64-bit) Microsoft Windows 8.1 PRO (64-bit) Microsoft Windows 8 PRO (64-bit) Microsoft Windows Server 2016 (64-bit) Microsoft Windows Server 2012 (64-bit) Microsoft Windows Server 2008 R2 (64-bit) Microsoft Windows 7 (32-bit or 64-bit) * *For Toad Data Modeler 64-bit version, only 64-bit version of the operating system can be used.	

i | Note: Microsoft .NET Framework version 3.5 is required on first application start.

Review the following information about Toad Data Modeler supported databases:

Database Server	<ul style="list-style-type: none">• Amazon® Aurora MySQL 5.6• Amazon® Aurora PostgreSQL 9.5• Amazon® Redshift 1.0• IBM® DB2® z/OS® 10, 11• IBM® DB2® LUW 9.5, 9.7, 10.1, 10.5, 11.1• Greenplum Database® 4.1, 4.2• Ingres 9.3, 10.0• EDB Postgres Advanced Server 10• Microsoft® Access® 2007-2010• Microsoft® Azure® SQL Database V12• Microsoft® SQL Server® 2005, 2008, 2012, 2014, 2016, 2017• MySQL 5.0, 5.1, 5.5, 5.6, 5.7• Oracle® 10g, 11g R1, 11g R2, 12c R1, 12c R2• PostgreSQL 9.0, 9.1, 9.2, 9.3, 9.4, 9.5, 10• SQLite 3.7• SAP® SQL Anywhere 17• SAP® ASE 16.0• Sybase® ASE 15.7
-----------------	--

	<ul style="list-style-type: none"> • Sybase® IQ 15.2 • Sybase® SQL Anywhere 11 • Teradata 13 • Vertica Database 8.0 • Other (Universal Model)
Cloud Database Server	<ul style="list-style-type: none"> • Oracle databases running on Amazon EC2 • Oracle Database as a Service • SQL Server running on Microsoft Azure • MySQL database running on Amazon RDS • PostgreSQL database running on Amazon RDS

Virtual Appliances

Review the following information about using Toad Data Modeler in virtual environments:

Requirement	Details
Application	Toad Data Modeler has been tested for Citrix support on the Citrix XenApp 6.5.
Desktop (VDI)	Issues during printing using virtual printers - The problem occurs only in case of print from a local machine (all printers from local machine are visible on vWorkspace). If the virtual printer is installed on vWorkspace directly, the issue will not occur.
Server	Oracle VM 3.0 Toad Data Modeler has been tested with ESXi VMware 5.5.

i Note: Toad Data Modeler may work correctly in virtual environments other than the tested ones. In case of virtual servers, support for Toad Data Modeler is provided on the basis of supported operating systems.

Supported Databases

- Amazon® Aurora MySQL 5.6
- Amazon® Aurora PostgreSQL 9.5
- Amazon® Redshift 1.0
- IBM® DB2® z/OS® 10, 11
- IBM® DB2® LUW 9.5, 9.7, 10.1, 10.5, 11.1
- Greenplum Database® 4.1, 4.2
- Ingres 9.3, 10.0
- EDB Postgres Advanced Server 10
- Microsoft® Access® 2007-2010

- Microsoft® Azure® SQL Database V12
- Microsoft® SQL Server® 2005, 2008, 2012, 2014, 2016, 2017
- MySQL 5.0, 5.1. 5.5, 5.6, 5.7
- Oracle® 10g, 11g R1, 11g R2, 12c R1, 12c R2
- PostgreSQL 9.0, 9.1, 9.2, 9.3, 9.4, 9.5, 10
- SQLite 3.7
- SAP® SQL Anywhere 17
- SAP® ASE 16.0
- Sybase® ASE 15.7
- Sybase® IQ 15.2
- Sybase® SQL Anywhere 11
- Teradata 13
- Vertica Database 8.0
- Other (Universal Model)

Details of Database Support

Supported Database System	Reverse Engineering			
	From a Database	From a SQL File	Change Script Generation	SQL/DDDL Code Generation
Amazon Aurora MySQL 5.6	●	●	●	●
Amazon Aurora PostgreSQL 9.5	●	●	●	●
Amazon Redshift 1.0	●	●	●	●
DB2 z/OS 11	●	●	●	●
DB2 z/OS 10	●	●	●	●
DB2 11.1 (LUW)	●	●	●	●
DB2 10.5 (LUW)	●	●	●	●
DB2 10.1 (LUW)	●	●	●	●
DB2 9.7 (LUW)	●	●	●	●
DB2 9.5 (LUW)	●	●	●	●
Greenplum 4.2	●	●	●	●
Greenplum 4.1	●	●	●	●
Ingres 10.0	●	●	●	●
Ingres 9.3	●	●	●	●

Reverse Engineering

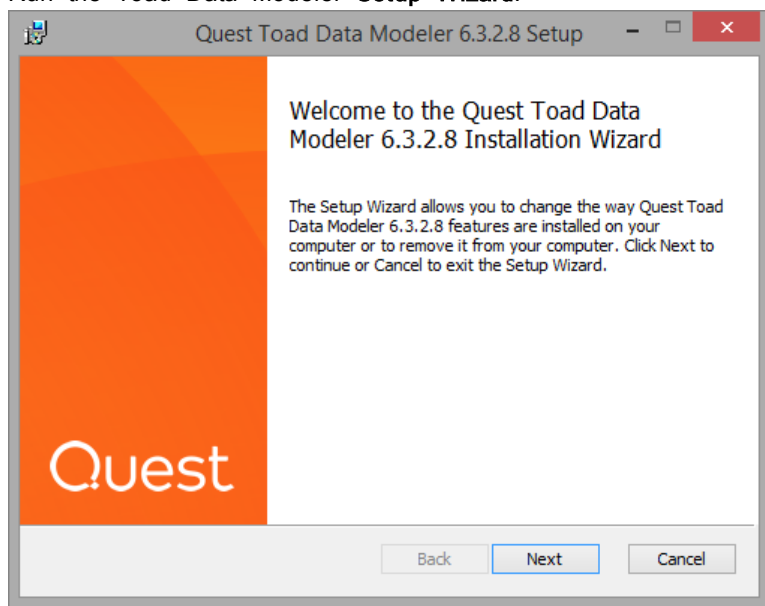
Supported Database System	Reverse Engineering			
	From a Database	From a SQL File	Change Script Generation	SQL/DDDL Code Generation
EDB Postgres Advanced Server 10	●	●	●	●
Microsoft Access 2007-2010	●	●	●	●
Microsoft Azure SQL Database V12	●	●	●	●
Microsoft SQL Server 2017	●	●	●	●
Microsoft SQL Server 2016	●	●	●	●
Microsoft SQL Server 2014	●	●	●	●
Microsoft SQL Server 2012	●	●	●	●
Microsoft SQL Server 2008	●	●	●	●
Microsoft SQL Server 2005	●	●	●	●
MySQL 5.7	●	●	●	●
MySQL 5.6	●	●	●	●
MySQL 5.5	●	●	●	●
MySQL 5.1	●	●	●	●
MySQL 5.0	●	●	●	●
Oracle 12c R2	●	●	●	●
Oracle 12c R1	●	●	●	●
Oracle 11g R2	●	●	●	●
Oracle 11g R1	●	●	●	●
Oracle 10g	●	●	●	●
PostgreSQL 10	●	●	●	●
PostgreSQL 9.5	●	●	●	●
PostgreSQL 9.4	●	●	●	●
PostgreSQL 9.3	●	●	●	●
PostgreSQL 9.2	●	●	●	●
PostgreSQL 9.1	●	●	●	●
PostgreSQL 9.0	●	●	●	●
SQLite 3.7	●	●	●	●
SAP ASE 16.0	●	●	●	●
Sybase ASE 15.7	●	●	●	●
Sybase ASE 15.5	●	●	●	●

Supported Database System	Reverse Engineering			
	From a Database	From a SQL File	Change Script Generation	SQL/DDDL Code Generation
Sybase IQ 15.2	●	●	●	●
SAP SQL Anywhere 17	●	●	●	●
Teradata 13	●	●	●	●
Vertica Database 8.0	●	●	●	●
Other databases (Universal Model)	●	●	●	●

i Note: Toad Data Modeler includes also support of Universal DB/ANSI Models. See [Universal DB/ANSI Model](#) for more information.

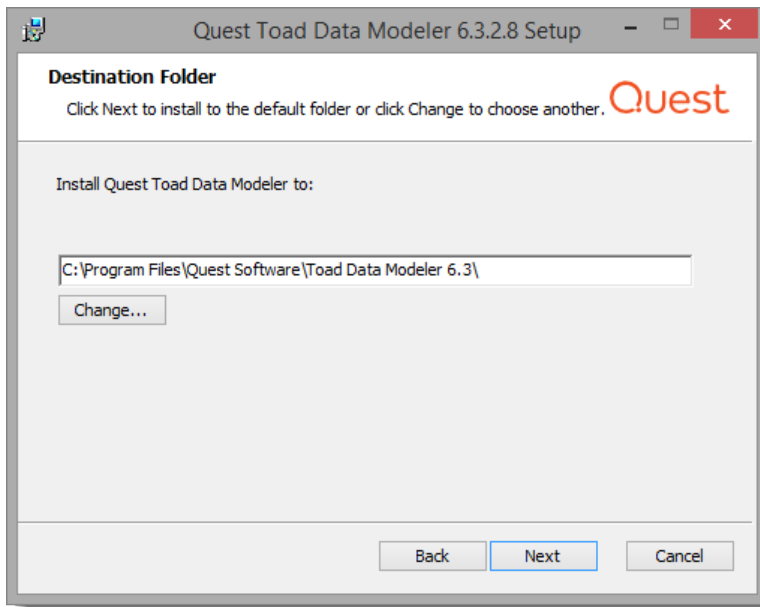
Installation

1. Run the Toad Data Modeler **Setup Wizard**.

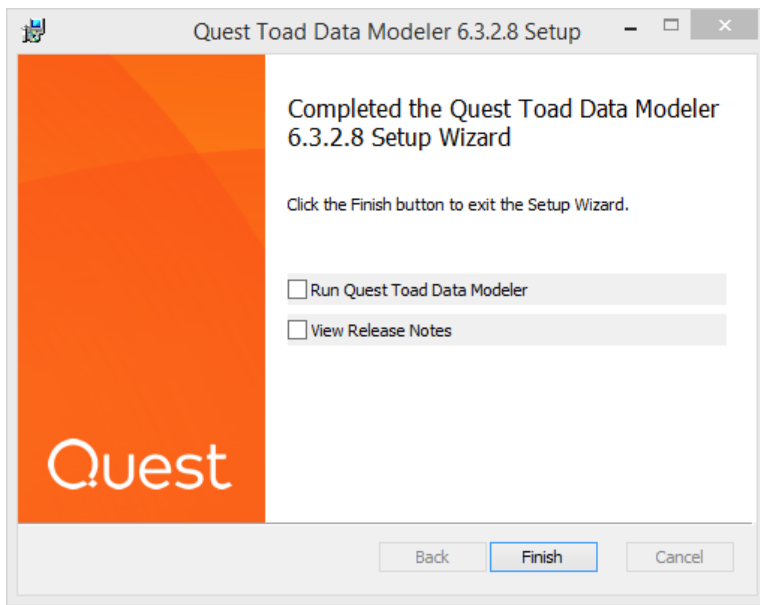


2. Read the License Agreement and check "I accept..." to proceed with the installation.

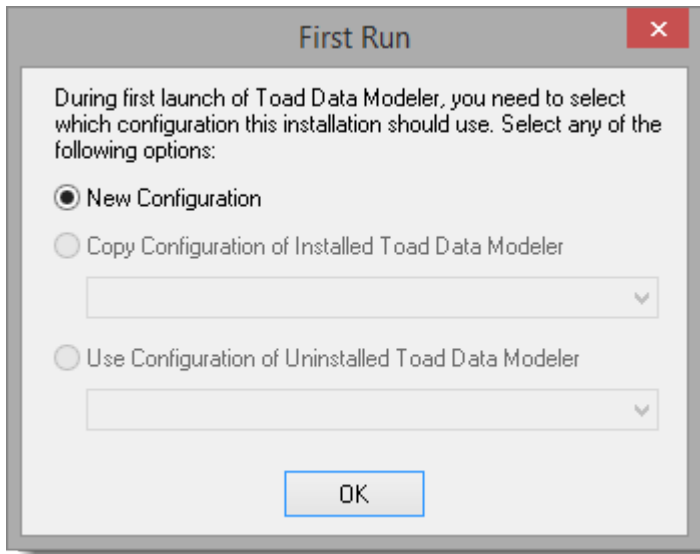
3. Change the installation path or install to the default directory.



4. Check the application shortcuts that will be created. Click **Install** to begin the installation.
5. Toad Data Modeler will be installed on your computer. Once the installation process is completed, you can choose to run the application or view Release Notes immediately after clicking **Finish**.



6. Once you launch the installed version of Toad Data Modeler, the **First Run** dialog appears. You can choose to use configuration from previous installations or create a new one. Only **New Configuration** is available for a clean installation.



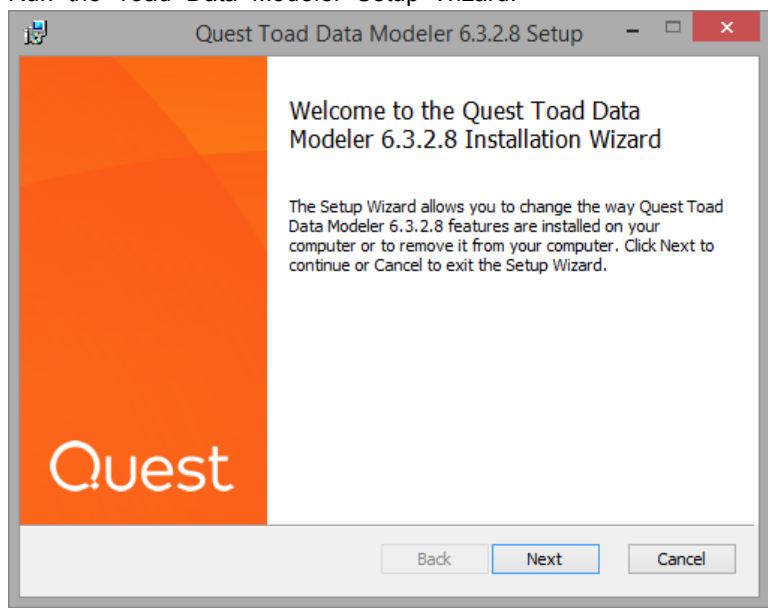
7. Enter a name for the configuration of the installation.
8. Toad Data Modeler starts in trial mode. Click **Continue** to evaluate Toad Data Modeler, or **Enter** your license key.

i | **Note:** For more information on location of Toad Data Modeler files see [Default Locations](#)

Upgrade

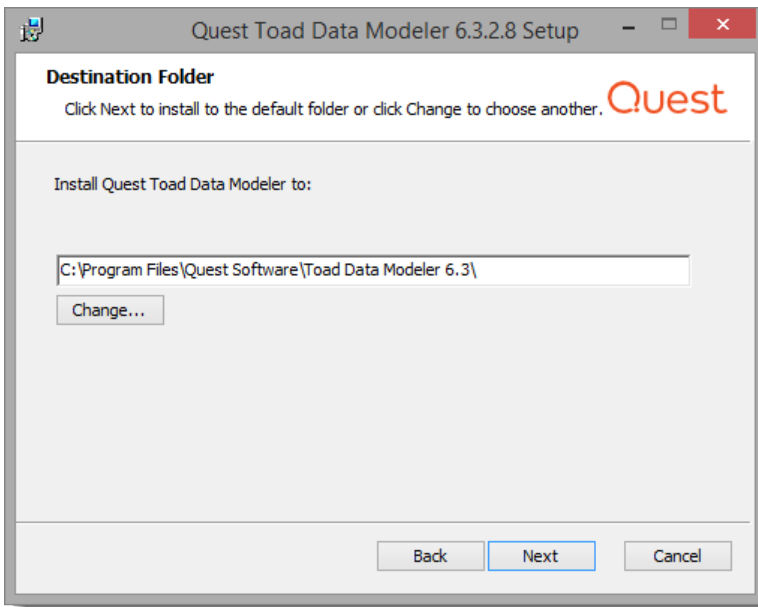
Upgrade installation path is selected in case a previous version of Toad Data Modeler has been installed on your system.

1. Run the Toad Data Modeler Setup Wizard.

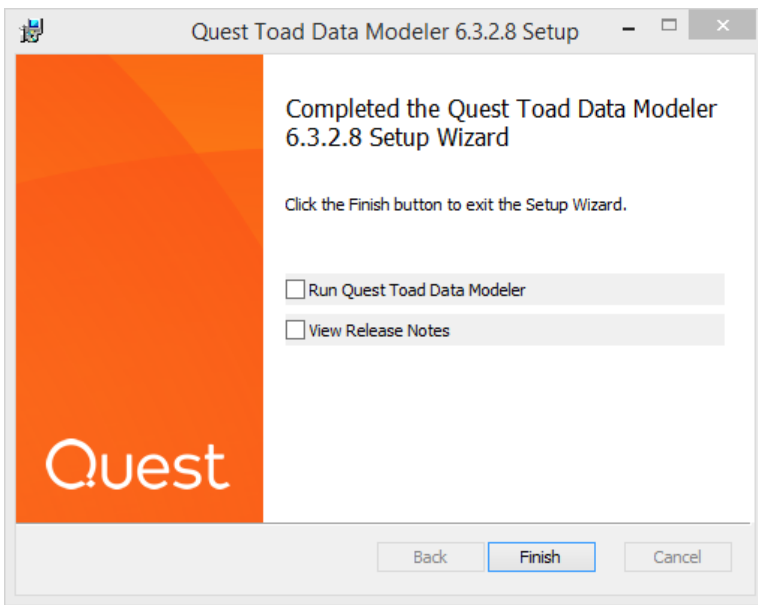


2. Read the License Agreement and check "I accept..." to proceed with the installation.

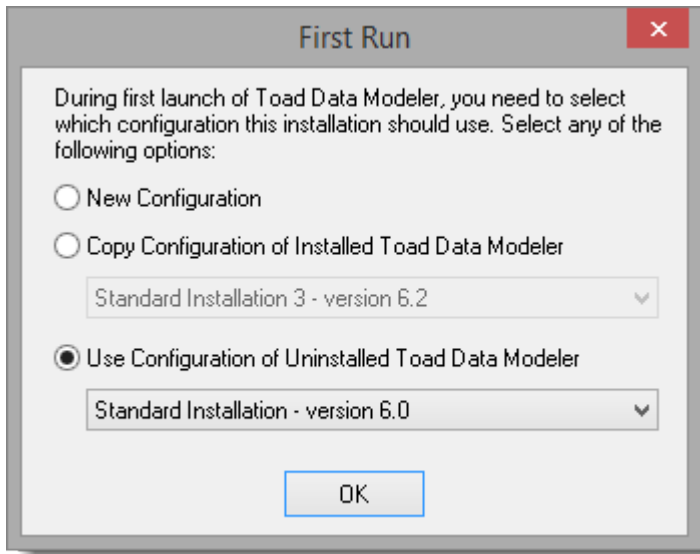
3. Change the installation path or install to the default directory.



4. Check the application shortcuts that should be created. Click **Install** to begin the installation.
5. Toad Data Modeler will be installed on your computer. Once the installation process is completed, you can choose to run the application or view Release Notes immediately after clicking **Finish**.



6. Once you launch the installed version of Toad Data Modeler, the **First Run** dialog appears. Select a configuration from previous installations or create a new one.



7. Enter a name for the configuration of this installation.
8. Toad Data Modeler starts in trial mode. Click **Continue** to evaluate Toad Data Modeler, or **Enter** your license key.

i Note: Settings can be also imported in the application via **Settings Menu | Options | Import**. You can either:

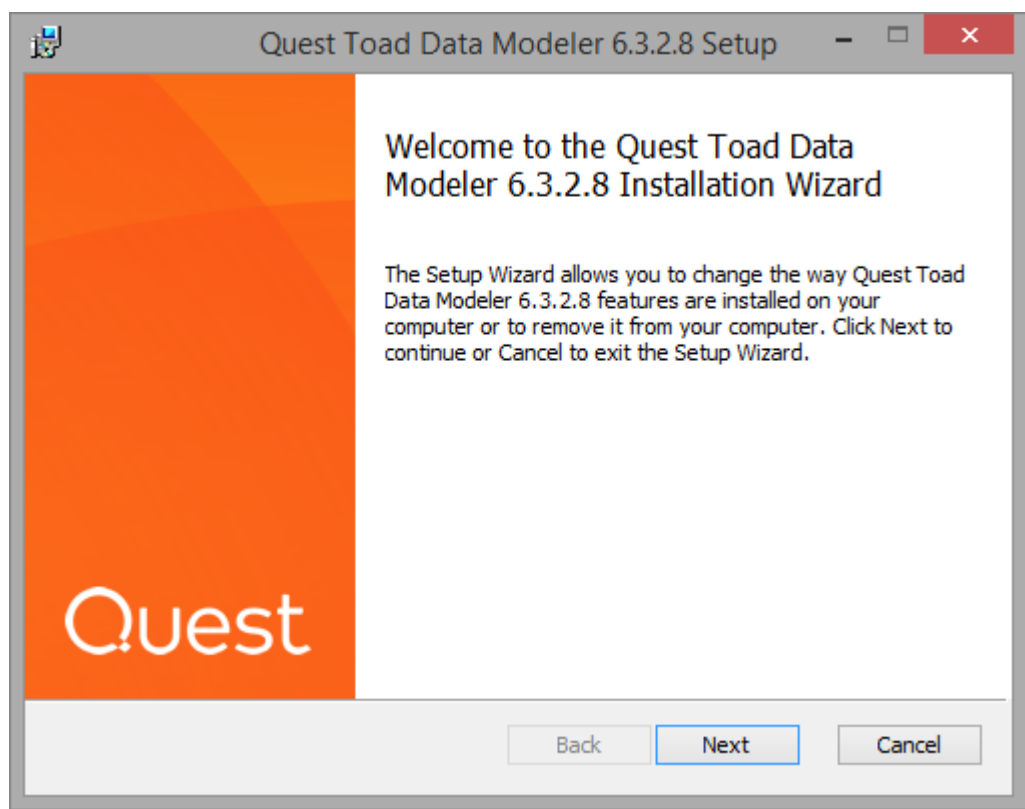
- **Import from Folder** - Navigate to a configuration folder of a Toad Data Modeler installation to import the settings.
- **Import from Other Installation** - The application tries to find other installations of Toad Data Modeler in default folders. If it succeeds, you can choose one to import settings from.

Side-by-Side Installation

Upgrade installation path is selected in case a previous version of Toad Data Modeler has been installed on your system.

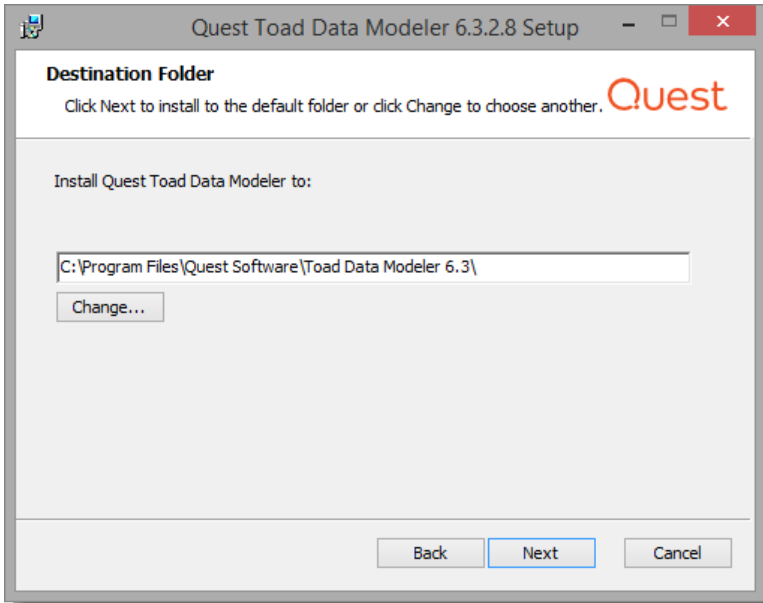
To install Toad Data Modeler side-by-side:

1. Run the Toad Data Modeler **Setup Wizard**. Click **Next** on the introduction screen.

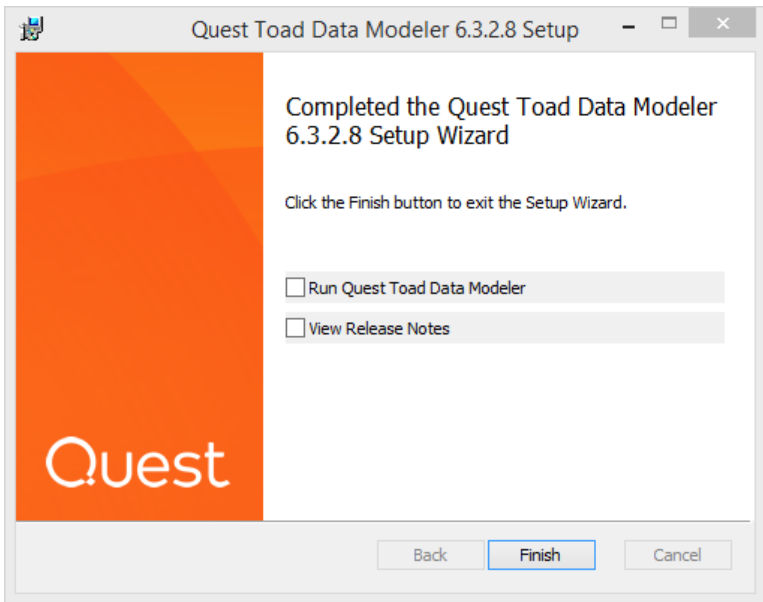


2. Read the License Agreement and check "I accept..." to proceed with the installation.

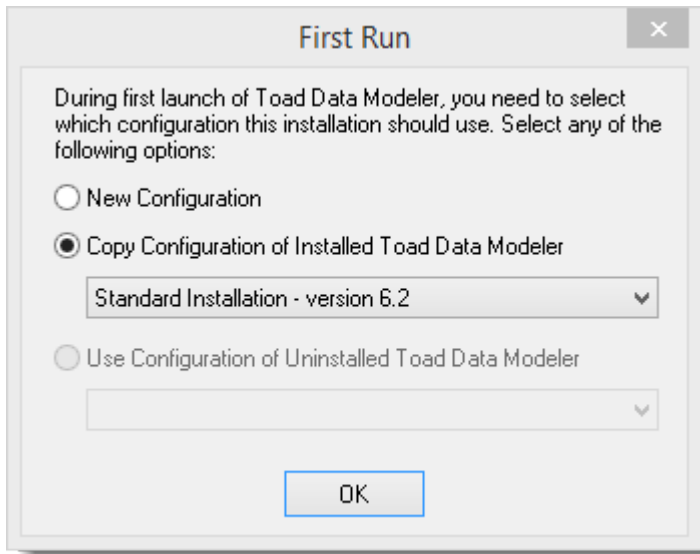
3. Change the installation path or install to the default directory. In case of side-by-side installation, make sure that your installation folder is **different** from the installation folder of the previous version.



4. Check the application shortcuts that will be created. Click **Install** to begin the installation.
5. Toad Data Modeler will be installed on your computer. Once the installation process is completed, you can choose to run the application or view Release Notes immediately after clicking **Finish**.



6. Once you launch the installed version of Toad Data Modeler, the **First Run** dialog appears. You can choose to use configuration from previous installations or create a new one.



7. Toad Data Modeler starts in trial mode. Click **Continue** to evaluate Toad Data Modeler, or **Enter** your license key.

i **Note:** Settings can be also imported in the application via **Settings Menu | Options | Import**. You can either:

- **Import from Folder** - Navigate to a configuration folder of a Toad Data Modeler installation to import the settings.
- **Import from Other Installation** - The application tries to find other installations of Toad Data Modeler in default folders. If it succeeds, you can choose one to import settings from.

Silent Installation

To perform a silent installation of Toad Data Modeler, you must have access to the *setup.MSI* file. It can be run from command line using switch *"/q"* and properties to customize the installation.

Properties

Property (command line option)	Description
SUPPRESSCOLLECTUSAGEATFIRSTRUN=1	Disables sending anonymous user data feedback function in the installed application.
INSTALLDIR	Specifies the installation folder. If unspecified, default installation folder is used.
ADDLOCAL	Used with several other arguments to determine which application shortcuts should be created. <ul style="list-style-type: none"> • Complete - needs to be used to install the entire application. • SHORTCUTDESKTOP - creates the application shortcut on desktop. • SHORTCUTSTARTMENU - creates the application shortcut in Start Menu. • SHORTCUTQUICKLAUNCH - creates the application shortcut in Quick Launch bar.

Examples

Install Toad Data Modeler to a custom folder

```
setup.msi /q INSTALLDIR="C:\Toad Data Modeler\"
```

Install Toad Data Modeler to default folder, create all shortcuts

```
setup.msi /q
```

```
ADDLOCAL=Complete,SHORTCUTDESKTOP,SHORTCUTSTARTMENU,SHORTCUTQUICKLAUNCH
```

Other parameters for silent installs can be found after you run "setup.msi ?" command.

Uninstallation

To uninstall Toad Data Modeler

- Select **Control Panel | Programs and Features**. Find the specific installation of Toad Data Modeler and click **Uninstall**.

i **Note:** User files are not deleted during uninstallation. They are stored in the following folders:

- **Saved user files (models, connections, scripts...)**
 - *C:\Users\{username}\My Documents\Toad Data Modeler* (Windows 7 and newer)
 - *C:\Documents and Settings\{username}\My Documents\Toad Data Modeler* (Windows Vista)
- **Configuration files**
 - *C:\Users\{username}\AppData\Roaming\Quest Software\Toad Data Modeler*
 - *C:\Documents and Settings\{user name}\Application Data\Quest Software\Toad Data Modeler* (Windows Vista)

To uninstall Toad Data Modeler completely, please delete these folders as well (note that you will lose all of your saved files and configuration).

i **Note:** For more information on location of Toad Data Modeler files see [Default Locations](#)

Trial Version Information

Limitations of Trial Version

- **30 – day trial period**
- **25 – entity limit for the following features** (the restrictions relate to both physical and logical models)

Functionality Restrictions

- **Save Model** – You can save a model with max 25 entities.
- **Preview** – You can preview a model with max 25 entities.
- **Print** – You can print a model with max 25 entities.
- **Export to Graphic File** – You can export a model with max 25 entities to graphic file.
- **SQL/DDDL Script Generation** – You can generate SQL/DDDL script only for first 25 entities of the model. Other objects (procedures, functions etc.) don't have any limitation.
- **Report** - You can generate HTML/RTF/PDF report for a model with max 25 entities.
- **Alter Report** – You can generate alter report for a model with max 25 entities.
- **XSL Transformation Report** – You can generate the XSL Transformation report only for first 25 entities of the model. Other objects (procedures, functions etc.) don't have any limitations.

Default Locations

Toad Data Modeler saves configuration files and user files to separate folders:

Installation

- **Configuration files** and **Version Control files** are stored in this folder.
- Default path: *C:\Users\{username}\AppData\Roaming\Quest Software\Toad Data Modeler\Installation #*.
- The **Installation** folder number increases by one for every installation of Toad Data Modeler.

i Note: Starting from Toad Data Modeler 6.0, the **Installation #** folder has been replaced with **Configuration x86 #** and **Configuration #** for **32-bit** and **64-bit** versions of Toad Data Modeler respectively.

Standard Installation # (can be renamed by user during application first run)

- **Connections, models, user packages etc.** are stored in this folder.
- Default path: *C:\Users\{user name}\My Documents\Toad Data Modeler\Standard Installation #*

Toad Data Modeler folder in My Documents

- Contains **Standard Instalation #** folder
- Also contains **Reports, Logs** and **GeneratedScripts** folders, they are default save locations for user files created in Toad Data Modeler

After Installation

Toad Data Modeler application is installed in: "*C:\Program Files (x86)\Quest Software\Toad Data Modeler 6.4*" (32-bit) or in "*C:\Program Files\Quest Software\Toad Data Modeler 6.4*" (64-bit). The following directories can be found there:

- **BIN**
Contains executable files (TDM.exe) and some libraries used for Reverse Engineering.
- **Configs**
The configuration files of default Toad Data Modeler settings and layout are stored here.
- **Documents**
Directory with Toad Data Modeler documentation – Help file, Reference Guide, License Agreement and Third Party License.

- **Naming Conventions**
Directory with .csv files that can be imported and used in glossaries for naming conventions in Toad Data Modeler.
- **Packages**
System packages and **metamodels** are stored in **System** subdirectory. Default *My Package* and **Templates** package are stored in **User** subdirectory.
- **Samples**
Directory with sample Toad Data Modeler models and galleries.
- **Selected OTPs**
Directory with .txo files for each supported database platform and logical model, containing Default (System) Selected Object Types and Properties.
- **Sources**
Directory containing source files that must be made publicly available based on licensing.
- **Styles**
Default CSS styles for report generation.
- **Version Manager**
Definition files for Version Manager.
- **XSL**
Directory with .xslt files - templates for XSL transformation.
- **Installation Guide document**
Document with information on the product version release.

After First Run

After you run the application, new directories will be created in your *My Documents* directory. Toad Data Modeler saves files to these directories by default. They are preserved when you upgrade or uninstall the application.

Another set of directories will be also created in **C:\Users\{user name}\AppData\Roaming\Quest Software\Toad Data Modeler\Installation #**. The files stored there are mainly configuration files of the application features and tools.

See which directories are generated after Toad Data Modeler first launch:

C:\Users\{user name}\AppData\Roaming\Quest Software\Toad Data Modeler\Installation #

- **Configs**
Configuration files are stored there, as well as *TDM.txe* file (contains saved application layout, delete to restore the default layout).
- **Version Manager**
User created Version Manager structure can be found in this folder.

C:\Users\{user name}\My Documents\Toad Data Modeler\{Installation name}

- **Connections**
Contains stored Connections created by user.
- **Convertor Options**
Contains stored Gallery Convertor Options configuration.

- **Galleries**
Default user galleries directory.
- **Models**
Default directory for models created in Toad Data Modeler.
- **Naming Conventions**
Default directory for naming convention definitions (.txn files) created in Toad Data Modeler.
- **Packages**
Directory with metamodels and packages (.txg files). User packages and add-ons are also stored here, including the *Templates.txg* package.
- **Projects**
Default Projects directory.
- **Scripts**
Default Scripts directory.
- **Selected OTPs**
Directory with User Selected Object Types and Properties.
- **Styles**
Default path to CSS styles for reports.
- **XSL**
Contains stored .xslt files for XSL transformation.

C:\Users\{user name}\My Documents\Toad Data Modeler

- **Generated Scripts**
DDL/SQL scripts generated in the application are saved here by default.
- **Logs**
Default directory for various Logs generated by Toad Data Modeler.
- **Reports**
Directory where HTML, RTF reports, PDF and XSLT outputs are generated.

About Us

We are more than just a name

We are on a quest to make your information technology work harder for you. That is why we build community-driven software solutions that help you spend less time on IT administration and more time on business innovation. We help you modernize your data center, get you to the cloud quicker and provide the expertise, security and accessibility you need to grow your data-driven business. Combined with Quest's invitation to the global community to be a part of its innovation, and our firm commitment to ensuring customer satisfaction, we continue to deliver solutions that have a real impact on our customers today and leave a legacy we are proud of. We are challenging the status quo by transforming into a new software company. And as your partner, we work tirelessly to make sure your information technology is designed for you and by you. This is our mission, and we are in this together. Welcome to a new Quest. You are invited to Join the Innovation.

Our brand, our vision. Together.

Our logo reflects our story: innovation, community and support. An important part of this story begins with the letter Q. It is a perfect circle, representing our commitment to technological precision and strength. The space in the Q itself symbolizes our need to add the missing piece — you — to the community, to the new Quest.

Technical Support Resources

For sales or other inquiries, visit www.quest.com/company/contact-us.aspx or call +1 949 754-8000.

Technical support is available to Quest customers with a valid maintenance contract and customers who have trial versions. You can access the Quest Support Portal at <https://support.quest.com>.

The Support Portal provides self-help tools you can use to solve problems quickly and independently, 24 hours a day, 365 days a year. The Support Portal enables you to:

- Submit and manage a Service Request
- View Knowledge Base articles
- Sign up for product notifications
- Download software and technical documentation
- View how-to-videos
- Engage in community discussions
- Chat with support engineers online
- View services to assist you with your product

Index

A

after toad data modeler is installed 23
after toad data modeler is run 24

B

before installation notes 4

C

Copyright 2

D

Database Support 7
default locations 23

F

Freeware 5

I

installation 11

L

Limitations 5

O

operating systems 6

S

side-by-side installation 17

silent installation 20

Supported Databases 7

system requirements 6

T

trial version limitations 22

U

upgrade 14

V

virtual appliances 7