

Toad Edge™ 1.2

Release Notes

November 2017

These release notes provide information about the Toad Edge release.

[About Toad Edge™ 1.2](#)
[Features of Toad Edge](#)
[Resolved issues](#)
[Known issues](#)
[System requirements](#)
[Product licensing](#)
[Getting started with Toad Edge 1.2](#)
[Globalization](#)

About Toad Edge™ 1.2

Toad Edge™ is a database management application that allows you to perform database administration tasks with ease.

Toad Edge™ allows you to:

- Connect to your MySQL database, view, explore and edit database structure, database objects and properties
- Manage database objects, easily add, edit or drop objects in **Object Explorer**
- Manage data stored in your database, add, edit or remove records
- Write complex SQL code comfortably in **Worksheet**
- Compare and synchronize databases using powerful **Schema Compare**
- Obtain detailed information about your databases

Toad Edge 1.2 is a new release. See [Features](#) for more information.

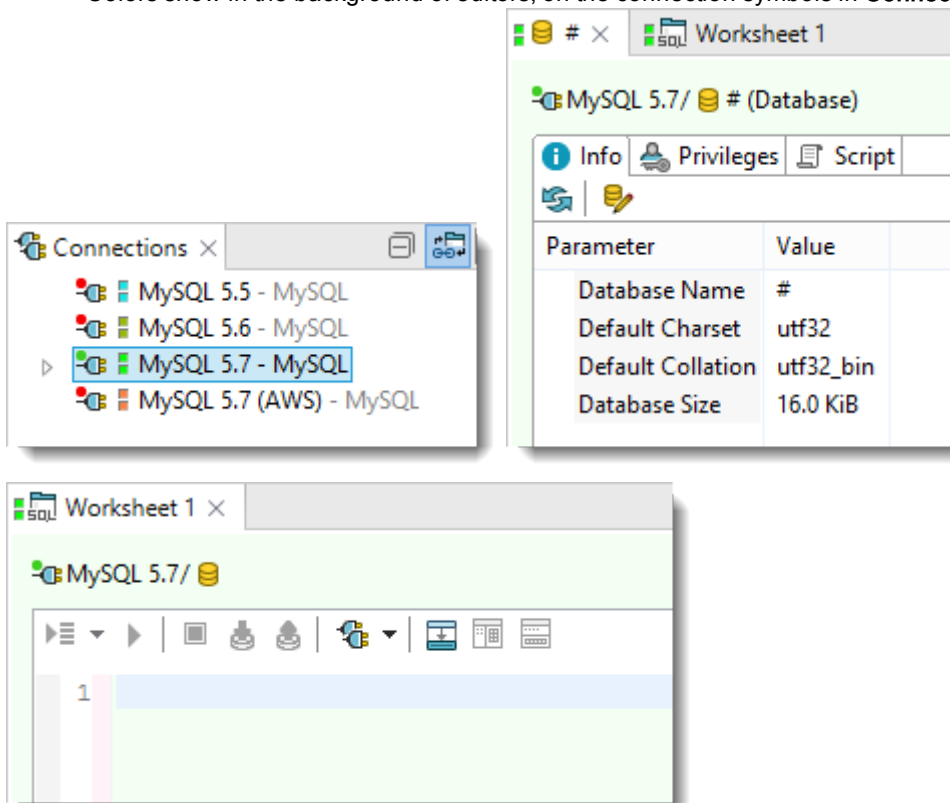
Features of Toad Edge

In Toad Edge™ 1.2 the following new features were implemented:

General features

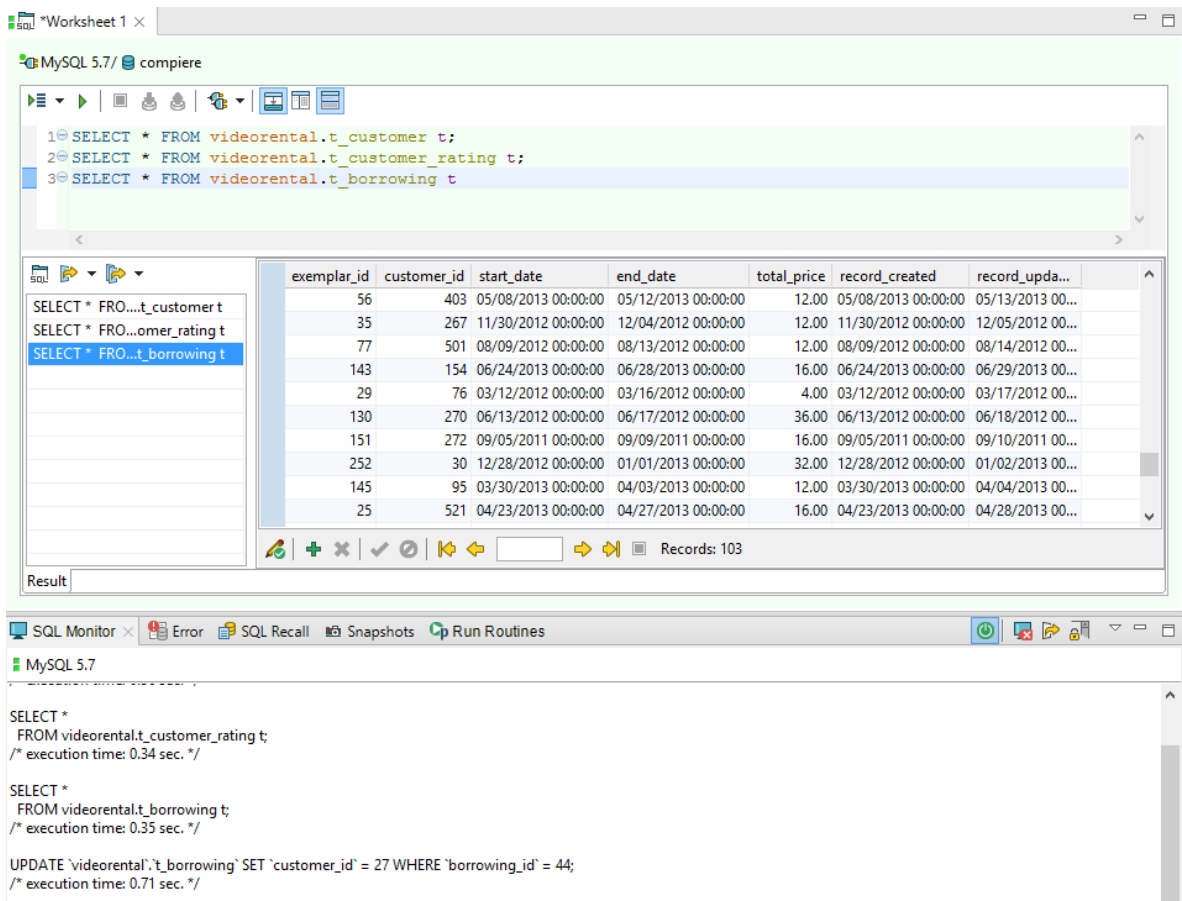
Colored connections

- Right-click any connection and select **Properties**. Check **Use Color** to use colors for background of editors and by clicking the color you can easily customize it
- Colors show in the background of editors, on the connection symbols in **Connections** and in **Worksheet**



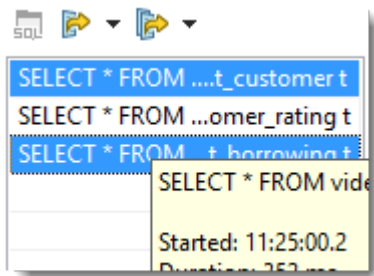
Multiple Result Set

- Toad Edge now supports working with more than one result sets
- Type your SELECT queries into **Worksheet** and click **Execute All Statements**
- Result sets from all queries will be displayed in a new **Result** view, where you can easily switch between results, display them side-by-side and edit them

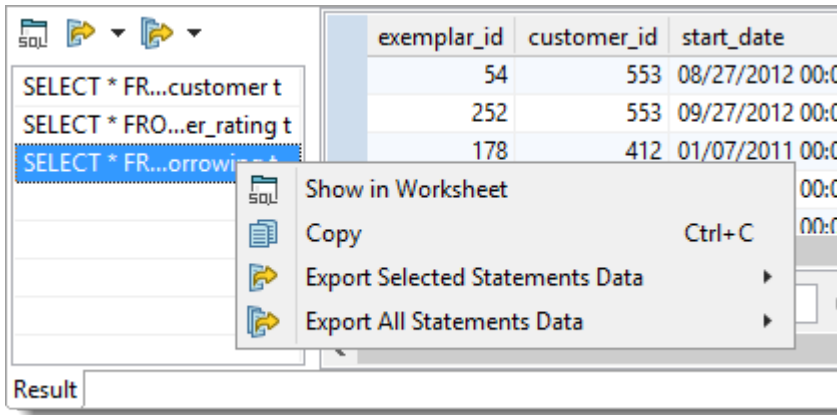


To work with multiple results

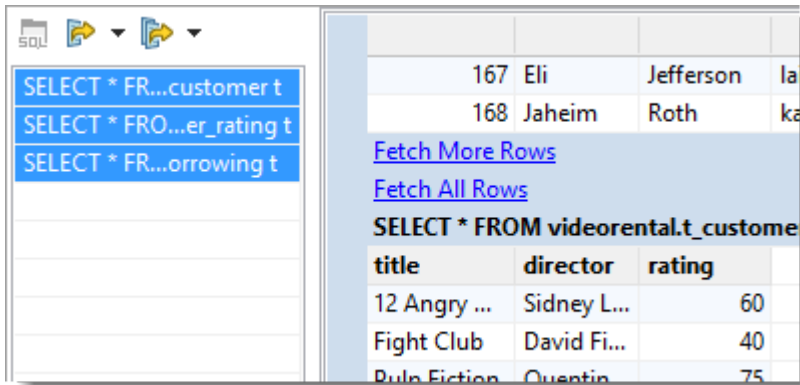
- Left-click a result to select it
- Hold Shift/Ctrl + left-click multiple results to select them



- Click **SQL** button to highlight a specific statement in **Worksheet**
- Right-click a statement in **Result** and click copy to copy the statement and later paste it into **Worksheet**

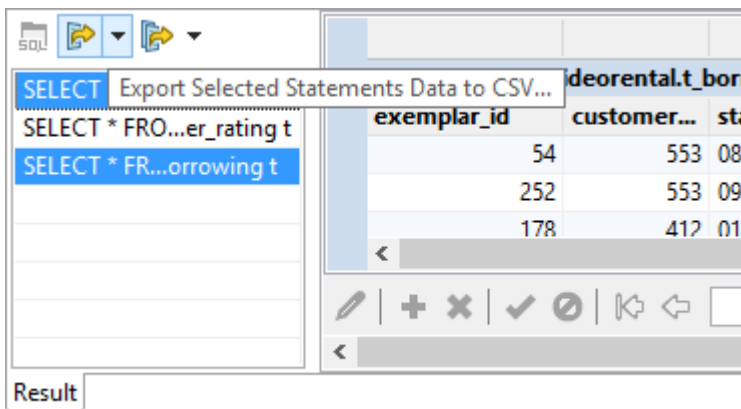


- Only a certain number of results will be fetched on execution. Scroll down to reveal more results when one result is selected. Set the number of fetched rows in **View | Preferences | Data | Use fetch limit**
- When more result sets are selected, click **Fetch More Rows** or **Fetch All Rows** to load more data



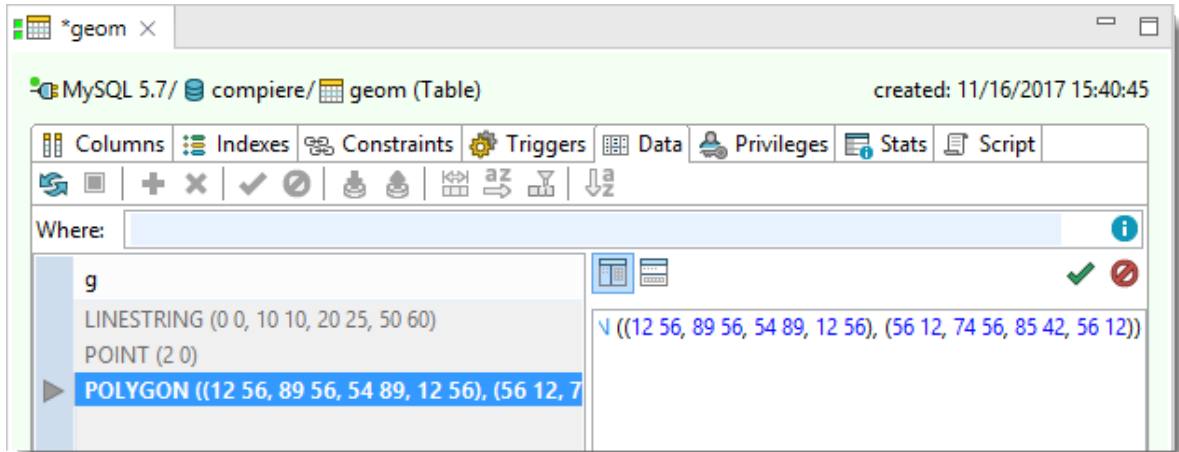
To export results

- Click **Export Selected Statements Data to CSV/SQL** to export some of the result sets
- Click **Export All Statements Data to CSV/SQL** to export all of the result sets
- Configure options such as export format, line terminator, destination and other settings in the next step



Support for Spatial Data Types

- MySQL supports spatial data types with either geometry values or collections of values
- Edit your spatial types using Toad Edge editor with syntax highlighting or in-place editor
- Double-click a table in **Object Explorer** and click **Data** to add and edit rows
- Double-click to edit a value in-place or click a button to launch a popup editor



Database features

Support for MariaDB 10.1

- MariaDB 10.1 has been fully tested with Toad Edge 1.2

Support for MySQL in Microsoft Azure Environment

- Toad Edge has been fully tested to run MySQL databases in MS Azure environment

Enhancements

Editable result set

- You can edit result sets of your queries directly
- Easily edit your results, add new rows and export any results or the whole result set and save as CSV, SQL, HTML or XML files

To edit a row

- Click **Enable Modification** to start editing your result set
- Double-click a field to edit it. Write a new value or select from a list using a popup button

| | end_date | total_price |
|----|---------------------|---------------------|
| 00 | 08/31/2012 00:00:00 | 16.0 |
| 00 | 10/03/2012 00:00:00 | 16.0 |
| 00 | 09/1 | 10/03/2012 00:00:00 |
| 00 | 01/1 | 11/16/2017 14:30:45 |
| 00 | 10/0 | |

- Use your arrows to move between rows and fields and click Enter to edit a selected field. **Apply your changes** or **Restore original values**

| | | | | | | | |
|-----|-----|---------------------|---------------------|-------|---------------------|---------------------|-----|
| 247 | 60 | 03/12/2011 00:00:00 | 03/16/2011 00:00:00 | 28.00 | 07/06/2012 00:00:00 | 011 00:00:00 | 449 |
| 65 | 146 | 11/23/2012 00:00:00 | 11/27/2014 00:00:00 | 12.00 | 11/23/2012 00:00:00 | 11/28/2012 00:00:00 | 456 |
| 241 | 533 | 08/18/2013 00:00:00 | 08/22/2013 00:00:00 | 16.00 | 08/18/2013 00:00:00 | 08/23/2013 00:00:00 | 460 |

Records: 119

- After having applied a change in a result Toad Edge will execute an appropriate statement
- See details of the statement in **SQL Monitor**. If it is not displaying any statements, turn it on by clicking **Enable Output**

To navigate display of results

- Use arrow buttons to **Go to Next/Previous page** of results or **Go to End/Beginning**
- Only a certain number of results will be fetched on execution. Scroll down to reveal more results. Set the number of fetched rows in **View | Preferences | Data | Use fetch limit**
- Right-click a column to hide it or restore original display of columns

Resolved issues

The following is a list of issues addressed in this release:

| Description | Issue ID |
|--|----------------|
| A NullPointerException after having started Toad Edge has been fixed. | 9000/4107505-1 |
| It is now possible to display result sets of multiple SELECT statements at once. | 8157 |

Known issues

The following is a list of issues, including those attributed to third-party products, known to exist at the time of release.

General known issues

| Known Issue | Issue ID |
|---|----------|
| Mouse cursor may become invisible in specific circumstances related to errors in Worksheet . Workaround: Switch into a different Toad Edge View and back. | 5942 |
| After upgrading from Toad Edge 1.0 , databases that were mapped (as part of Repository) will lose their mapping. | 8223 |
| When a database is synchronized with Repository, changes made to tables in the database that have been created using BLACKHOLE, CSV or FEDERATED engine are not detected in Object Explorer. Workaround: Display the comparison window (right-click the database Repository Synchronize). The changes will be detected and subsequently displayed in Object Explorer. | 8332 |
| After upgrading from Toad Edge 1.0, the latest MySQL JDBC driver is not automatically mapped. Workaround: Map the latest driver manually in Preferences Database. The driver can be found in <i>C:\Program Files\Quest Software\Toad Edge\lib\drivers</i> . | 8536 |
| Toad Edge changes double quotes to single quotes in synchronization script generated for stored procedures, events and triggers which using dynamic SQL. | 8750 |
| Toad Edge will not override default settings of associated programs for opening JSON files on Windows. | 9229 |

Third-party known issues

| Known Issue | Issue ID |
|--|----------|
| Setting up increased DPI (125%) causes some Toad Edge Tab labels to display incorrectly. Workaround: Set DPI to 100%. | 6515 |
| Loading identical Table Details on two connections may cause the dialogs that modify these tables to freeze. Workaround: End Toad Edge using Task Manager. | 7517 |
| After removing the Primary Key and making the column unique, MySQL still keeps PRI as the column key in columns table. | 7249 |
| MacOS connections to Amazon RDS databases may automatically expire and be dropped. | 7621 |
| Year 2000 in Year(2) data type (00) is not correctly represented in Object Detail or Result Set as JDBC driver raises an exception if the value of the year is 0. Such values are represented in grids as unknown. | 8264 |
| Names of functions with special characters are not stored properly in a database even when UTF-8 encoding is used. This can cause side effects such as not being able to grant a privilege to a function as its name in query is different from the actual stored name. Workaround: Replace special characters by basic (ASCII). | 7287 |
| MySQL time values are displayed as (invalid value) in Object Detail and Result Set if they | 8236 |

| Known Issue | Issue ID |
|---|----------|
| are outside the range 00:00:00-24:00:00. This is a limitation of JDBC driver. | |
| On Windows 10 closing a tab in Toad Edge using a drop-down menu may close other tabs than intended. | 8478 |
| Batch files that use UTF-8 BOM encoding cannot be executed by the Toad Edge command line interface. Workaround: The CI/CD Wizard in Toad Edge generates files using pure UTF-8 encoding. Do not change the encoding once the files are generated. | 8486 |
| Updating system Java may delete certain Toad Edge libraries. This results in the application being unable to connect to databases or obtain licenses. Workaround: The only way to restore the deleted files is to reinstall Toad Edge | 8603 |

System requirements

Before installing Toad Edge 1.2, ensure that your system meets the following minimum hardware and software requirements.

i | **NOTE:** Toad Edge™ is distributed with the latest MySQL Connector/J 5.1.44 and with Java Runtime Environment 1.8.0_121.

Hardware requirements

| Requirement | Details |
|-----------------|--|
| Processor | Minimum dual core 64-bit processor |
| Memory | Minimum 4 GB RAM |
| Hard disk space | Minimum 500 MB + additional disk space for user data |

Software requirements

| Requirement | Details |
|--------------------|---|
| Operating System | Windows 10 (64-bit) Windows 8.1 (64-bit) Windows 7 (64-bit) Windows Server 2012 R2 (64-bit) macOS 10.13 High Sierra (64-bit) macOS 10.12 Sierra (64-bit) OS X 10.11 El Capitan (64-bit) |
| Other requirements | .NET 4.0 is required to install the application on Windows 7 |

i | **NOTE:** Toad Edge may also run on virtual versions of the mentioned operating systems. Please note, however, that these configurations were not tested.

Database requirements

| Supported database | Version | Additional details |
|--------------------|---------------|---|
| MySQL | 5.5, 5.6, 5.7 | MySQL 5.6 tested to run in Microsoft Azure. MySQL 5.7 tested to run in Amazon Relational Database Service (RDS) environment MySQL engines: InnoDB, MyISAM Tested MySQL editions: Community, Standard, Enterprise |
| MariaDB | 10.1 | MariaDB 10.1 tested for common functionality with MySQL 5.6 |

Other Requirements

| | |
|---------------------|--|
| Internet connection | In order to sign-in and validate your license internet connection is required to connect with our licensing servers. |
| Internet browser | In order to view documentation an internet browser is required. Internet Explorer 10 or later is recommended. |

Product licensing

Three types of licenses are available for Toad Edge:

- **Freeware** - basic mode which is active when no other license is supplied
- **Trial** - unlimited mode which lasts for a set period (for example, the initial 30-day Trial)
- **Commercial** - unlimited mode gained by purchasing and using a Commercial license in the application

As mentioned in [Introduction](#), you need to create and sign in to your Quest Software account in order to start using Toad Edge. After you create your account, you are provided an initial 30-day Trial license. This allows you to try out the application and all of its features.

Once the Trial period elapses, you can purchase and supply a Commercial license to continue using Toad Edge without limitations. Otherwise, the application will revert to the Freeware mode. You will be still able to use all Freeware features, but you will not be able to access Commercial features.

The following matrix lists all features that can be used in Freeware and Trial/Commercial versions of Toad Edge.

| Feature | Commercial | Freeware |
|------------------------------------|------------|----------|
| MySQL features | | |
| Support for JSON data types | ✓ | ✓ |
| JSON structure visualization | ✓ | ✗ |
| JSON in-place data editor | ✓ | ✗ |
| MySQL Events editor | ✓ | ✗ |
| Advanced user privilege management | ✓ | ✗ |
| SQL Worksheet/Editor | | |
| Advanced Intellisense | ✓ | ✗ |
| Syntax check | ✓ | ✓ |
| Code formatting | ✓ | ✓ |
| Multiple statement execution | ✓ | ✓ |
| Execution from/to position | ✓ | ✓ |
| Data editor | | |
| Table lookup via foreign keys | ✓ | ✓ |
| Basic data filters | ✓ | ✓ |
| Data type specific data editors | ✓ | ✓ |
| Editable result grid | ✓ | ✗ |
| Export and import | | |
| Export to CSV | ✓ | ✗ |
| Export to SQL | ✓ | ✓ |
| Export to HTML | ✓ | ✓ |
| Export to XML | ✓ | ✓ |
| Import from SQL | ✓ | ✓ |
| Import from CSV | ✓ | ✓ |

| Feature | Commercial | Freeware |
|--|------------|----------|
| Schema Compare | | |
| Schema/Database comparison | ✓ | ✗ |
| Advanced SQL difference recognition | ✓ | ✗ |
| Detailed SQL comparison settings | ✓ | ✗ |
| Timestamp comparison | ✓ | ✗ |
| Detailed Schema Compare reports | ✓ | ✗ |
| Generation of change scripts | ✓ | ✗ |
| Snapshots | | |
| Snapshot creation | ✓ | ✗ |
| Snapshot comparison | ✓ | ✗ |
| Versioning/Collaboration | | |
| Repository | ✓ | ✗ |
| Continuous Integration/Continuous Delivery support | ✓ | ✗ |
| Native plugin solution for Jenkins | ✓ | ✗ |
| Other application features | | |
| Object search | ✓ | ✓ |
| Code snippets/templates | ✓ | ✗ |
| Session browser | ✓ | ✗ |

Getting started with Toad Edge 1.2

Contents of installation package

The Toad Edge release package contains the following:

- Installation file of Toad Edge 1.2 (MSI or PKG)
- Product Documentation, including:
 - Release Notes
 - Installation Guide
 - User Guide

i | **NOTE:** Toad Edge™ is distributed with the latest MySQL Connector/J 5.1.44 and with Java Runtime Environment 1.8.0_121.

Installation Instructions

- See [System requirements](#) before installation to avoid any possible issues during installation or later when using Toad Edge
- Launch Toad Edge installation file and follow the instructions in the installation wizard

How to Install Java Cryptography Extension

- Download the latest JCE files:
 - local_policy.jar
 - US_export_policy.jar
- and use them to replace the files in Toad Edge security folder
 - (...)\Quest Software\Toad Edge\bin\jre\lib\security\

Additional resources

Additional information is available from the following:

Globalization

This section contains information about installing and operating this product in non-English configurations, such as those needed by customers outside of North America. This section does not replace the materials about supported platforms and configurations found elsewhere in the product documentation.

This release is Unicode-enabled and supports any character set. In this release, all product components should be configured to use the same or compatible character encodings and should be installed to use the same locale and regional options. This release is targeted to support operations in the following regions: North America, Western Europe and Latin America, Central and Eastern Europe, Far-East Asia, Japan.

About Us

We are more than just a name

We are on a quest to make your information technology work harder for you. That is why we build community-driven software solutions that help you spend less time on IT administration and more time on business innovation. We help you modernize your data center, get you to the cloud quicker and provide the expertise, security and accessibility you need to grow your data-driven business. Combined with Quest's invitation to the global community to be a part of its innovation, and our firm commitment to ensuring customer satisfaction, we continue to deliver solutions that have a real impact on our customers today and leave a legacy we are proud of. We are challenging the status quo by transforming into a new software company. And as your partner, we work tirelessly to make sure your information technology is designed for you and by you. This is our mission, and we are in this together. Welcome to a new Quest. You are invited to Join the Innovation.

Our brand, our vision. Together.

Our logo reflects our story: innovation, community and support. An important part of this story begins with the letter Q. It is a perfect circle, representing our commitment to technological precision and strength. The space in the Q itself symbolizes our need to add the missing piece — you — to the community, to the new Quest.

Technical Support Resources

For sales or other inquiries, visit www.quest.com/contact.

Technical support is available to Quest customers with a valid maintenance contract and customers who have trial versions. You can access the Quest Support Portal at <https://support.quest.com>.

The Support Portal provides self-help tools you can use to solve problems quickly and independently, 24 hours a day, 365 days a year. The Support Portal enables you to:

- Submit and manage a Service Request
- View Knowledge Base articles
- Sign up for product notifications
- Download software and technical documentation
- View how-to-videos
- Engage in community discussions
- Chat with support engineers online
- View services to assist you with your product

Copyright

Copyright 2017 Quest Software Inc. ALL RIGHTS RESERVED.

This guide contains proprietary information protected by copyright. The software described in this guide is furnished under a software license or nondisclosure agreement. This software may be used or copied only in accordance with the terms of the applicable agreement. No part of this guide may be reproduced or transmitted in any form or by any means, electronic or mechanical, including photocopying and recording for any purpose other than the purchaser's personal use without the written permission of Quest Software Inc.

The information in this document is provided in connection with Quest Software products. No license, express or implied, by estoppel or otherwise, to any intellectual property right is granted by this document or in connection with the sale of Quest Software products. EXCEPT AS SET FORTH IN THE TERMS AND CONDITIONS AS SPECIFIED IN THE LICENSE AGREEMENT FOR THIS PRODUCT, QUEST SOFTWARE ASSUMES NO LIABILITY WHATSOEVER AND DISCLAIMS ANY EXPRESS, IMPLIED OR STATUTORY WARRANTY RELATING TO ITS PRODUCTS INCLUDING, BUT NOT LIMITED TO, THE IMPLIED WARRANTY OF MERCHANTABILITY, FITNESS FOR A PARTICULAR PURPOSE, OR NON-INFRINGEMENT. IN NO EVENT SHALL QUEST SOFTWARE BE LIABLE FOR ANY DIRECT, INDIRECT, CONSEQUENTIAL, PUNITIVE, SPECIAL OR INCIDENTAL DAMAGES (INCLUDING, WITHOUT LIMITATION, DAMAGES FOR LOSS OF PROFITS, BUSINESS INTERRUPTION OR LOSS OF INFORMATION) ARISING OUT OF THE USE OR INABILITY TO USE THIS DOCUMENT, EVEN IF QUEST SOFTWARE HAS BEEN ADVISED OF THE POSSIBILITY OF SUCH DAMAGES. Quest Software makes no representations or warranties with respect to the accuracy or completeness of the contents of this document and reserves the right to make changes to specifications and product descriptions at any time without notice. Quest Software does not make any commitment to update the information contained in this document.

If you have any questions regarding your potential use of this material, contact:

Quest Software Inc.
Attn: LEGAL Dept
4 Polaris Way
Aliso Viejo, CA 92656

Refer to our Web site (www.quest.com) for regional and international office information.

Patents

Quest Software is proud of our advanced technology. Patents and pending patents may apply to this product. For the most current information about applicable patents for this product, please visit our website at www.quest.com/legal.

Trademarks

Quest, and the Quest logo are trademarks and registered trademarks of Quest Software Inc. in the U.S.A. and other countries. For a complete list of Quest Software trademarks, please visit our website at www.quest.com/legal. Microsoft, Windows, Windows Server are either registered trademarks or trademarks of Microsoft Corporation in the United States and/or other countries. Oracle is a trademark or registered trademark of Oracle and/or its affiliates in the United States and other countries. MySQL is a registered trademark of MySQL AB in the United States, the European Union and other countries. macOS™ and OS X® are trademarks of Apple Inc., registered in the U.S. and other countries. All other trademarks, servicemarks, registered trademarks, and registered servicemarks are the property of their respective owners.