

Toad® Data Modeler 6.3

Release Notes

Monday, September 11, 2017

These release notes provide information about the Toad® Data Modeler release.

- [About Toad Data Modeler](#)
- [New in Toad Data Modeler 6.3](#)
- [Resolved issues](#)
- [Known issues](#)
- [System requirements](#)
- [Supported database platforms](#)
- [Product licensing](#)
- [Getting started with Toad Data Modeler 6.3](#)
- [Globalization](#)
- [About Us](#)

About Toad Data Modeler

Toad Data Modeler helps organizations create, maintain and document their database systems with an easy-to-use graphical interface into new or existing database structures. Toad Data Modeler enables users to reverse engineer database structures, update models, design and generate SQL, compare models and generate alter scripts, create HTML or RTF reports, in addition to versioning of database designs and creation of to-do lists.

Toad Data Modeler 6.3 is a minor release, with enhanced features and functionality. See [New features](#) and [Resolved issues](#) for more information.

Toad Data Modeler is released in 32-bit and 64-bit versions. The 64-bit version of the application has a significantly higher memory limit which should resolve several common issues incl. out of memory errors, which occurred when working with complex models.

However, in order to reverse engineer databases that require a client you need a corresponding version of the client, i.e. 32-bit or 64-bit.

New in Toad Data Modeler 6.3

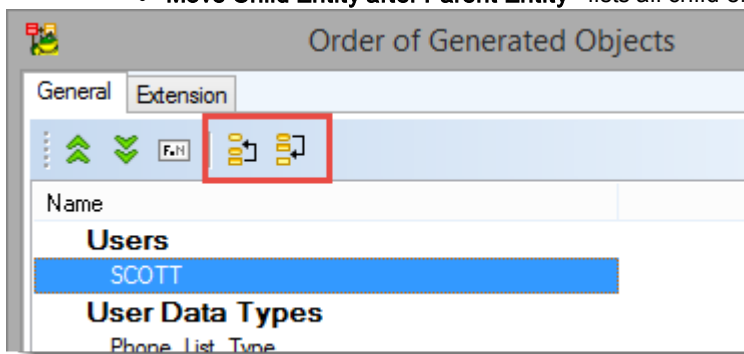
General features

Application Variables

- Application variables in Names/Captions are now fully supported for relationships, check constraints and key constraints in **Physical Model Explorer, Designer, DDL Script and Change Script Generators**, and in **Reports**
- Set your application variables in **Properties** dialogs
- Check **Resolve Application Variables** in **Report Wizard | Options** to use variables in **Report Generation**
- Right-click a relationship in **Model Explorer** and select Refresh Application Variables to reload any changes

Relationship Order

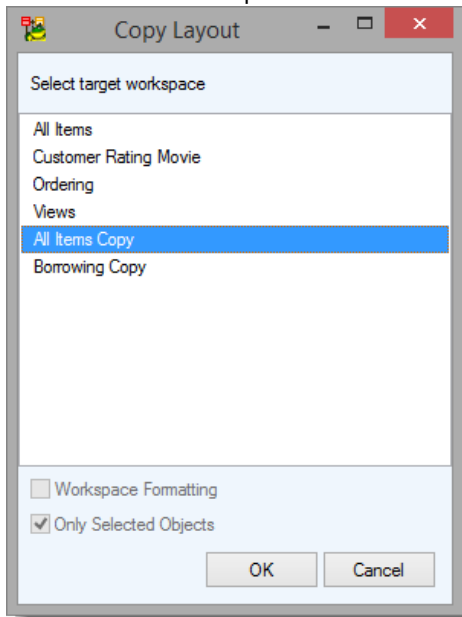
- From Toad Data Modeler 6.3 it is now possible to generate relations also:
 - After each CREATE TABLE statement
 - Inside CREATE TABLE statement
- Select **Model | Order of Generated Objects** to set the desired order of entities:
 - **Move Parent Entity before Child Entity** - lists each parent entity before their respective child entities
 - **Move Child Entity after Parent Entity** - lists all child entities after their parent entities



Workspace Layout Copy

- With Toad Data Modeler 6.3 you can easily copy layouts to different workspaces in your models
- You can copy all formatting, shapes, lines and positions and dimensions of database objects to another workspace

- Right-click into your **Designer** and select **Workspace Layout | Copy Workspace Layout to** to copy the layout into a different workspace
- Right-click an object in your model and select **Copy Object Layout to** to copy its specific layout to a different workspace



Database features

For more information on supported databases see the list of [Supported database platforms](#)

Support for Aurora MySQL 5.6

- Toad Data Modeler 6.3 now fully supports MySQL 5.6 databases operated in the cloud engine Amazon Aurora

Support for IBM DB2 11.1

- Toad Data Modeler 6.3 now supports the latest IBM DB2 11.1
- Changes for functions and procedures have been implemented
- New datatypes (BINARY, VARBINARY, BINARY VARYING, BOOLEAN) have been implemented

Microsoft Access Enhancements

Generation of names in brackets

- Check **Delimited Identifiers** in **DDL Script Generation | Detail Settings** to generate all names in brackets

- If unchecked names will be generated without brackets with exception of names that include spaces

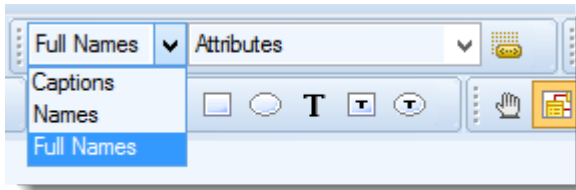
Generation of captions

- Check **Generate Captions** in **DDL Script Generation | Detail Settings** for MS Access models

Enhancements

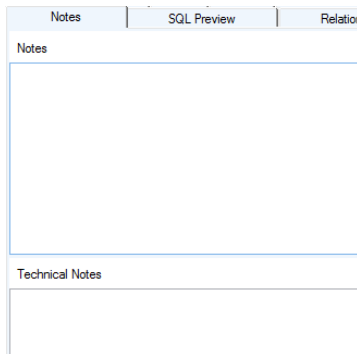
Workspace Enhancements

- In order to distinguish between similarly named entities full names can now be displayed in **Workspace Properties**. Select what you want to display in **View | Display Mode** or using the main **Display** toolbar in Toad Data Modeler:

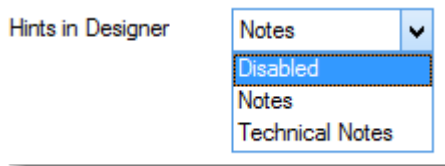


Display of Short Notes in Designer

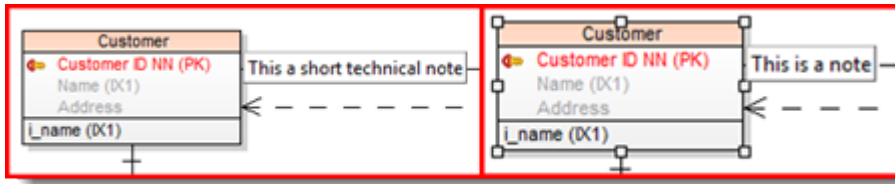
- You now can use two types of Notes for objects in your models
- For entities, relations, view, materialized views, inheritances, entity attributes and view relations you can use **Notes** and **Technical Notes** for physical models
- Double-click an object and select **Notes** to fill in your notes and technical notes



- You can control what is displayed in a popup hint in both physical and logical models in **Designer** in **Settings | Options | Graphics**



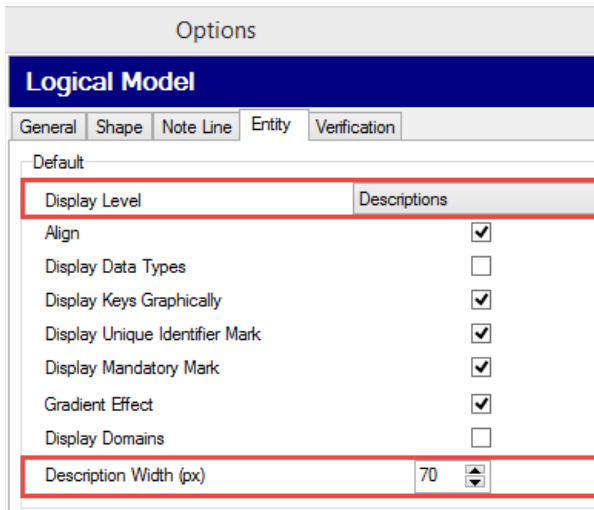
- When you hover over an object header you will see a note, technical note or nothing in case it has been set to Disabled



- Double-click an entity, relation, inheritance or entity attribute to set **Descriptions** and **Technical Descriptions** in logical models

Line Breaking for Descriptions in Logical Models

- You now can set maximum width for Descriptions in Designer. Names of longer descriptions are broken into multiple lines
- Select Descriptions in **Settings | Options | Logical Model | Entity** in order to display them in Designer and adjust their maximum width in pixels



Change Script Generation Enhancements

- Uncheck **Grant Option** in **Generate Change Script | Select Object Types | Detailed Settings | Permissions to Objects** to omit generation of Grants

Resolved issues

The following is a list of issues addressed in this release.

Resolved Issue	Issue ID
Renaming non TDM files in Application now functions correctly	3472
You now can uncheck Grant Option in Generate Change Script Select Object Types Detailed Settings Permissions to Objects in order not to generate grants to objects	1468
Application Variables are now supported for Default Constraint Name for MS SQL Server and MS SQL Azure Database. It is now possible to enter Default Constraint Name for Domains or use Application Variables	3137
Application Variables are now supported for NotNull Constraint Names in Oracle models	2369
It is now possible to un/check Generate Captions in DDL Script Generation Detail Settings for MS Access models	2816
Child entities will not inherit autoincrement property of Attribute when autoincrement property has been set for their parent entities in MySQL models	3028/3914979-1
Varchar data type was changed to character varying (n) for PostgreSQL models 9.1 and higher	3144/3964938-1
Full names of entities can now be displayed in Workspace Properties	3448
Fit to Screen now works correctly	3514/4092720-1
It is now possible to generate brackets for all MS Access names	3253
Short notes can now be displayed in Designer	3456/4076973-1
Long entity descriptions are now broken into multiple lines for logical models	3334
Saving in Actions dialog has been improved	3303
Date fields in ToDo list are now sorted correctly	3513/4091031-1
Removal of shortcuts during uninstallation of TDM now works as expected	1501
Added support for Windows Server 2016	2939/3876391-1
Generation of NULL statements in column definitions in SAP ASE now works correctly	3583/4103589-1
Reverse Engineering of Sequences in PostgreSQL now works correctly	3520/4092742-1
It is now possible to copy layouts to other models	3216/4011390-1
Performance of TDM when copying objects in Workspace was improved	3308
Display of TDM at high DPIs was improved	3249/4037301-1
DDL script generation on MySQL with primary keys when domains are used now works correctly	3427/3905031-1

Known issues

The following is a list of issues, including those attributed to third-party products, known to exist at the time of release.

System requirements

Before installing Toad Data Modeler 6.3, ensure that your system meets the following minimum hardware and software requirements.

System requirements

	Minimal Requirements	Optimal
Memory	1 GB	4 GB
Hard Disk Space	400 MB	1 GB
Operating System	Microsoft Windows 10 (64-bit) Microsoft Windows 8.1 PRO (64-bit) Microsoft Windows 8 PRO (64-bit) Microsoft Windows Server 2016 (64-bit) Microsoft Windows Server 2012 (64-bit) Microsoft Windows Server 2008 R2 (64-bit) Microsoft Windows Server 2008 (32-bit or 64-bit)* Microsoft Windows 7 (32-bit or 64-bit) * Microsoft Windows Vista (32-bit or 64-bit) * *For Toad Data Modeler 64-bit version, only 64-bit version of the operating system can be used.	

Note: Microsoft .NET Framework version 3.5 is required on first application start.

Virtual appliances

Review the following information about using Toad Data Modeler in virtual environments:

Requirement	Details
Application	Toad Data Modeler has been tested for support on the Citrix XenApps 6.5 Server.
Desktop (VDI)	Problem during print on virtual printer - The problem occurs only in case of print from local machine (all printers from local machine are visible on vWorkspace). If the virtual printer is installed on Workspace directly, the problem doesn't occur.
Server	Oracle VM 3.0 Toad Data Modeler has been tested with VMware Server 2 running on Windows 7.

Toad Data Modeler may work correctly in virtual environments other than the tested ones. In case of virtual servers, support for Toad Data Modeler is provided on the basis of supported operating systems.

Cloud database services

Toad Data Modeler supports the following cloud-based database services:

- Oracle Database as a Service

Upgrade and compatibility

It is not possible to open models created in Toad Data Modeler 6.3 in versions earlier than 6.0.

Version 5.2 introduced new system of relationship lines. Models created in version 5.1 and lower are automatically converted to the newer format. Backup your models prior to opening them in version 5.2 or higher.

Do not open and re-save models originally created in a higher version of Toad Data Modeler in a lower version of Toad Data Modeler.

Supported database platforms

Supported model types

- Logical
- Universal
- Physical

Supported databases

- Amazon® Aurora MySQL 5.6
- IBM® DB2® z/OS® 9, 10, 11
- IBM® DB2® LUW 9, 9.5, 9.7, 10.1, 10.5, 11.1
- IBM® DB2® UDB 8 (LUW)
- Greenplum Database® 4.1, 4.2
- Ingres 9.3, 10.0
- Microsoft® Access® 2000-2003, 2007-2010
- Microsoft® Azure® SQL Database V12
- Microsoft® SQL Server® 2000, 2005, 2008, 2012, 2014, 2016
- MySQL 5.0, 5.1, 5.5, 5.6, 5.7
- Oracle® 9i, 10g, 11g R1, 11g R2, 12c R1, 12c R2
- PostgreSQL 8.1, 8.2, 8.3, 8.4, 9.0, 9.1, 9.2, 9.3, 9.4, 9.5
- SQLite 3.7

- SAP® SQL Anywhere 17
- SAP® ASE 16.0
- Sybase® ASE 12.5, 15, 15.7
- Sybase® IQ 15.2
- Sybase® SQL Anywhere 11
- Teradata 13
- Vertica Database 8.0
- Other (Universal Model)

i | Note: For more information about the level of support please see **Help**, section **Introduction | Supported Databases**.

Product licensing

To activate a purchased commercial license

1. Open Toad Data Modeler.
2. Select **Help | Licensing**.

Getting started with Toad Data Modeler 6.3

Upgrade and installation instructions

The Toad Data Modeler release package contains the following products:

- Installation file of Toad Data Modeler (MSI)
- Product Documentation, including:
 - Release Notes (PDF)
 - Installation Guide (PDF)

Installation Instructions

Refer to Toad Data Modeler **Installation Guide** for installation instructions.

Additional resources

If applicable, point to related references, provide a list of corresponding documents, videos, or identify the community where additional information can be obtained. Otherwise, delete this section.

Additional information is available from the following:

- [Online product documentation](#)
- [Toad World community](#)

Globalization

This section contains information about installing and operating this product in non-English configurations, such as those needed by customers outside of North America. This section does not replace the materials about supported platforms and configurations found elsewhere in the product documentation.

This release is Unicode-enabled and supports any character set. In this release, all product components should be configured to use the same or compatible character encodings and should be installed to use the same locale and regional options. This release is targeted to support operations in the following regions: North America, Western Europe and Latin America, Central and Eastern Europe, Far-East Asia, Japan.

The release is localized to the following languages: Chinese (Simplified), Chinese (Traditional), Czech, Hebrew, Italian, Portuguese (Brazil), Russian, Spanish.

This release has the following known capabilities or limitations: Localized support for HTML and RTF/PDF reports in several languages will be distributed via TDM Community.

Available dictionaries: Chinese (Simplified and Traditional), Czech, Hebrew, Hindi, Punjabi, Russian, Spanish, Brazilian Portuguese and Italian

About Us

We are more than just a name

We are on a quest to make your information technology work harder for you. That is why we build community-driven software solutions that help you spend less time on IT administration and more time on business innovation. We help you modernize your data center, get you to the cloud quicker and provide the expertise, security and accessibility you need to grow your data-driven business. Combined with Quest's invitation to the global community to be a part of its innovation, and our firm commitment to ensuring customer satisfaction, we continue to deliver solutions that have a real impact on our customers today and leave a legacy we are proud of. We are challenging the status quo by transforming into a new software company. And as your partner, we work tirelessly to make sure your information technology is designed for you and by you. This is our mission, and we are in this together. Welcome to a new Quest. You are invited to Join the Innovation.

Our brand, our vision. Together.

Our logo reflects our story: innovation, community and support. An important part of this story begins with the letter Q. It is a perfect circle, representing our commitment to technological precision and strength. The space in the Q itself symbolizes our need to add the missing piece — you — to the community, to the new Quest.

Technical Support Resources

For sales or other inquiries, visit www.quest.com/company/contact-us.aspx or call +1 949 754-8000.

Technical support is available to Quest customers with a valid maintenance contract and customers who have trial versions. You can access the Quest Support Portal at <https://support.quest.com>.

The Support Portal provides self-help tools you can use to solve problems quickly and independently, 24 hours a day, 365 days a year. The Support Portal enables you to:

- Submit and manage a Service Request
- View Knowledge Base articles
- Sign up for product notifications
- Download software and technical documentation
- View how-to-videos
- Engage in community discussions
- Chat with support engineers online
- View services to assist you with your product

Copyright

Copyright 2017 Quest Software Inc. ALL RIGHTS RESERVED.

This guide contains proprietary information protected by copyright. The software described in this guide is furnished under a software license or nondisclosure agreement. This software may be used or copied only in accordance with the terms of the applicable agreement. No part of this guide may be reproduced or transmitted in any form or by any means, electronic or mechanical, including photocopying and recording for any purpose other than the purchaser's personal use without the written permission of Quest Software Inc.

The information in this document is provided in connection with Quest Software products. No license, express or implied, by estoppel or otherwise, to any intellectual property right is granted by this document or in connection with the sale of Quest Software products. EXCEPT AS SET FORTH IN THE TERMS AND CONDITIONS AS SPECIFIED IN THE LICENSE AGREEMENT FOR THIS PRODUCT, QUEST SOFTWARE ASSUMES NO LIABILITY WHATSOEVER AND DISCLAIMS ANY EXPRESS, IMPLIED OR STATUTORY WARRANTY RELATING TO ITS PRODUCTS INCLUDING, BUT NOT LIMITED TO, THE IMPLIED WARRANTY OF MERCHANTABILITY, FITNESS FOR A PARTICULAR PURPOSE, OR NON-INFRINGEMENT. IN NO EVENT SHALL QUEST SOFTWARE BE LIABLE FOR ANY DIRECT, INDIRECT, CONSEQUENTIAL, PUNITIVE, SPECIAL OR INCIDENTAL DAMAGES (INCLUDING, WITHOUT LIMITATION, DAMAGES FOR LOSS OF PROFITS, BUSINESS INTERRUPTION OR LOSS OF INFORMATION) ARISING OUT OF THE USE OR INABILITY TO USE THIS DOCUMENT, EVEN IF QUEST SOFTWARE HAS BEEN ADVISED OF THE POSSIBILITY OF SUCH DAMAGES. Quest Software makes no representations or warranties with respect to the accuracy or completeness of the contents of this document and reserves the right to make changes to specifications and product descriptions at any time without notice. Quest Software does not make any commitment to update the information contained in this document.

If you have any questions regarding your potential use of this material, contact:

Quest Software Inc.
Attn: LEGAL Dept
4 Polaris Way
Aliso Viejo, CA 92656

Refer to our Web site (www.quest.com) for regional and international office information.

Patents

Quest Software is proud of our advanced technology. Patents and pending patents may apply to this product. For the most current information about applicable patents for this product, please visit our website at www.quest.com/legal.

Trademarks

Quest, and the Quest logo are trademarks and registered trademarks of Quest Software Inc. in the U.S.A. and other countries. For a complete list of Quest Software trademarks, please visit our website at www.quest.com/legal. All other trademarks, servicemarks, registered trademarks, and registered servicemarks are the property of their respective owners.