

Desktop Authority 10.1

## Data Diagram



**© 2017 Quest Software Inc. ALL RIGHTS RESERVED.**

This guide contains proprietary information protected by copyright. The software described in this guide is furnished under a software license or nondisclosure agreement. This software may be used or copied only in accordance with the terms of the applicable agreement. No part of this guide may be reproduced or transmitted in any form or by any means, electronic or mechanical, including photocopying and recording for any purpose other than the purchaser's personal use without the written permission of Quest Software Inc.

The information in this document is provided in connection with Quest Software products. No license, express or implied, by estoppel or otherwise, to any intellectual property right is granted by this document or in connection with the sale of Quest Software products. EXCEPT AS SET FORTH IN THE TERMS AND CONDITIONS AS SPECIFIED IN THE LICENSE AGREEMENT FOR THIS PRODUCT, QUEST SOFTWARE ASSUMES NO LIABILITY WHATSOEVER AND DISCLAIMS ANY EXPRESS, IMPLIED OR STATUTORY WARRANTY RELATING TO ITS PRODUCTS INCLUDING, BUT NOT LIMITED TO, THE IMPLIED WARRANTY OF MERCHANTABILITY, FITNESS FOR A PARTICULAR PURPOSE, OR NON-INFRINGEMENT. IN NO EVENT SHALL QUEST SOFTWARE BE LIABLE FOR ANY DIRECT, INDIRECT, CONSEQUENTIAL, PUNITIVE, SPECIAL OR INCIDENTAL DAMAGES (INCLUDING, WITHOUT LIMITATION, DAMAGES FOR LOSS OF PROFITS, BUSINESS INTERRUPTION OR LOSS OF INFORMATION) ARISING OUT OF THE USE OR INABILITY TO USE THIS DOCUMENT, EVEN IF QUEST SOFTWARE HAS BEEN ADVISED OF THE POSSIBILITY OF SUCH DAMAGES. Quest Software makes no representations or warranties with respect to the accuracy or completeness of the contents of this document and reserves the right to make changes to specifications and product descriptions at any time without notice. Quest Software does not make any commitment to update the information contained in this document.

If you have any questions regarding your potential use of this material, contact:

Quest Software Inc.

Attn: LEGAL Dept

4 PolarisWay

Aliso Viejo, CA 92656

Refer to our Web site (<https://www.quest.com>) for regional and international office information.

### **Patents**

Quest Software is proud of our advanced technology. Patents and pending patents may apply to this product. For the most current information about applicable patents for this product, please visit our website at <https://www.quest.com/legal>.

### **Trademarks**

Quest, the Quest logo, and Join the Innovation are trademarks and registered trademarks of Quest Software Inc. For a complete list of Quest marks, visit <https://www.quest.com/legal/trademark-information.aspx>. All other trademarks and registered trademarks are property of their respective owners.

### **Legend**

CAUTION: A CAUTION icon indicates potential damage to hardware or loss of data if instructions are not followed.

An information icon indicates supporting information.

Desktop Authority Getting Started Guide  
Updated - August 2017  
Version - 10.1

# Table of Contents

- Database Schema ..... 4**
- Computer Management Profile Data ..... 6
- Hardware/Software Inventory Data ..... 7
- User/Computer Activity Data ..... 8
  
- About Us ..... 9**
- Our brand, our vision. Together. .... 9
  - Contacting Quest ..... 9
  - Technical support resources..... 9

---

# Database Schema

For readability and ease of use, the DA Reporting Database Schema shown on the following pages is broken up into logical groupings, User Management Profile Data, Computer Management Profile Data, Hardware/Software Inventory, User/Computer Activity Data, Anti-malware and Anti-spyware.

The grouping of tables that make up the **User Management Profile Data** consists of all profile and configuration element data for User Management profile objects configured in the Manager.

The grouping of tables that make up the **Computer Management Profile Data** consists of all profile and configuration element data for Computer Management profile objects configured in the Manager.

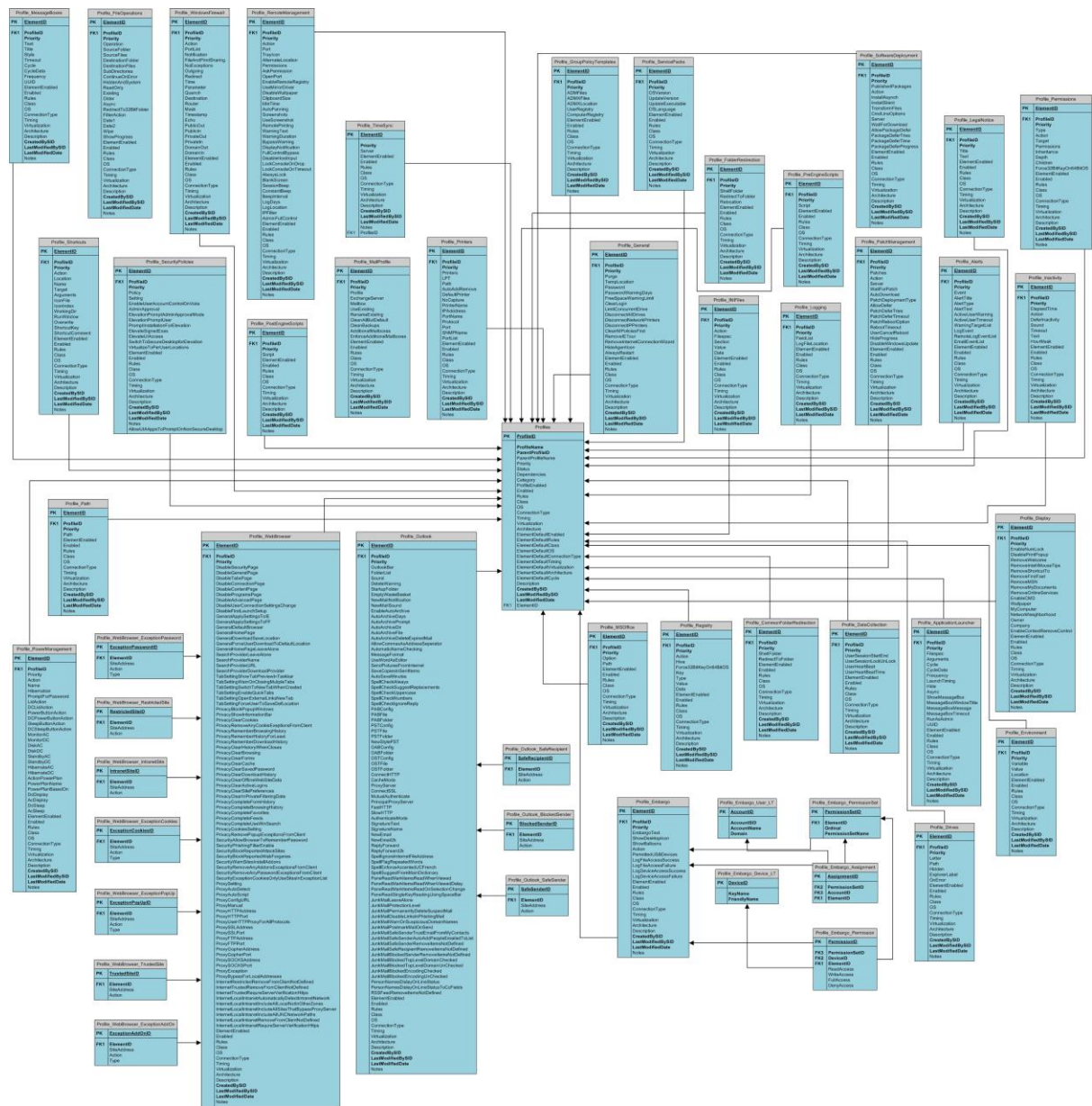
The **Hardware/Software Inventory** grouping consists of data that is collected from and about hardware and software clients that log on to the network.

The grouping of tables that make up the **User/Computer Activity Data** consists of data collected as users/computers log on and off the network. This set makes up the data needed for User Activity reporting.

The Profile data is periodically updated from the DACONFIGURATION database to the DAREPORTING database. The period in which the database is updated is configured in the ETLProcessor plugin. This is found on the OpsMaster Service tab of Server Manager.

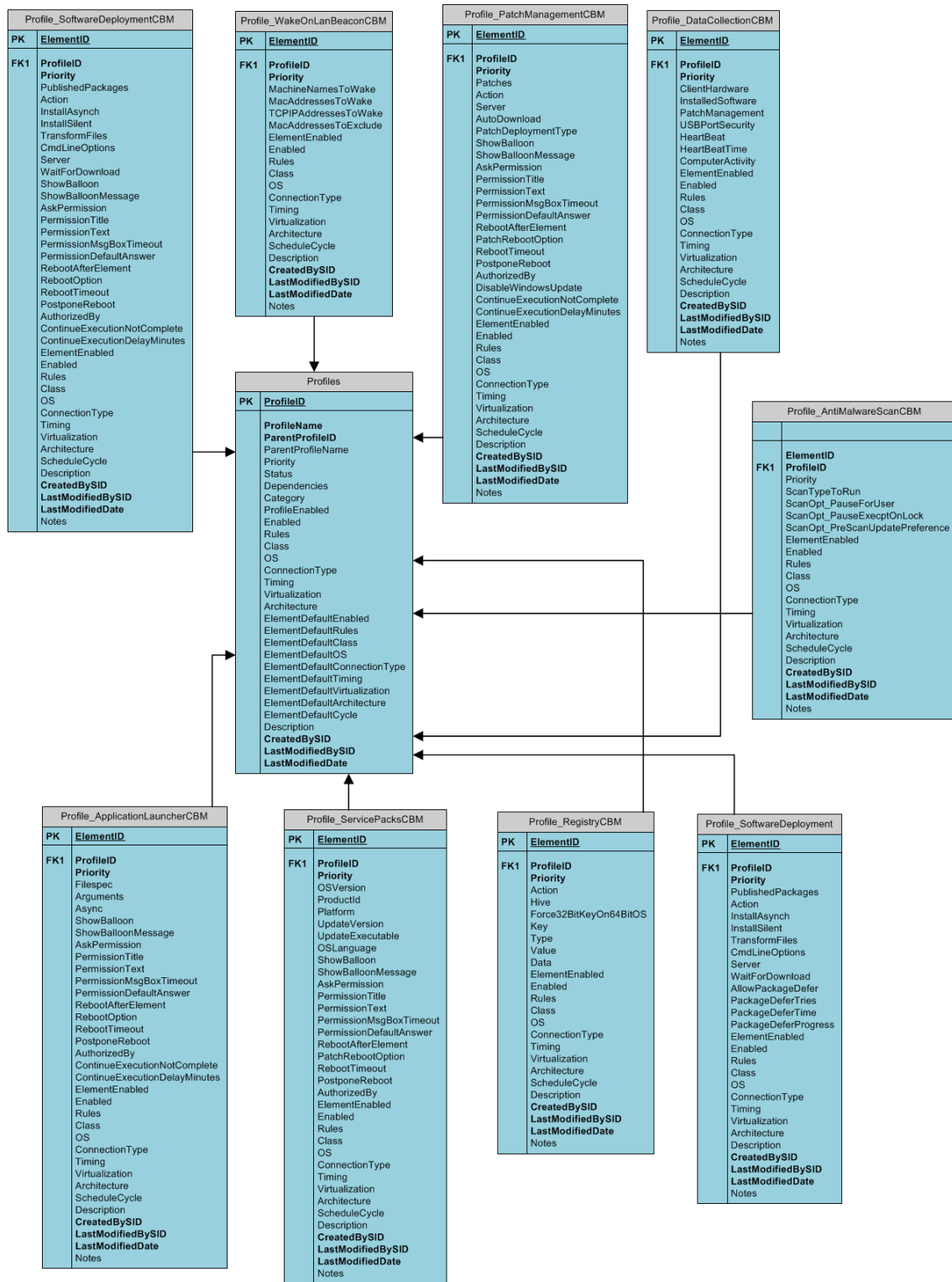
When viewing the following diagrams, zoom in for a more precise view. A full printable version of the diagrams can be downloaded from the Quest web site.

# User Management Profile Data



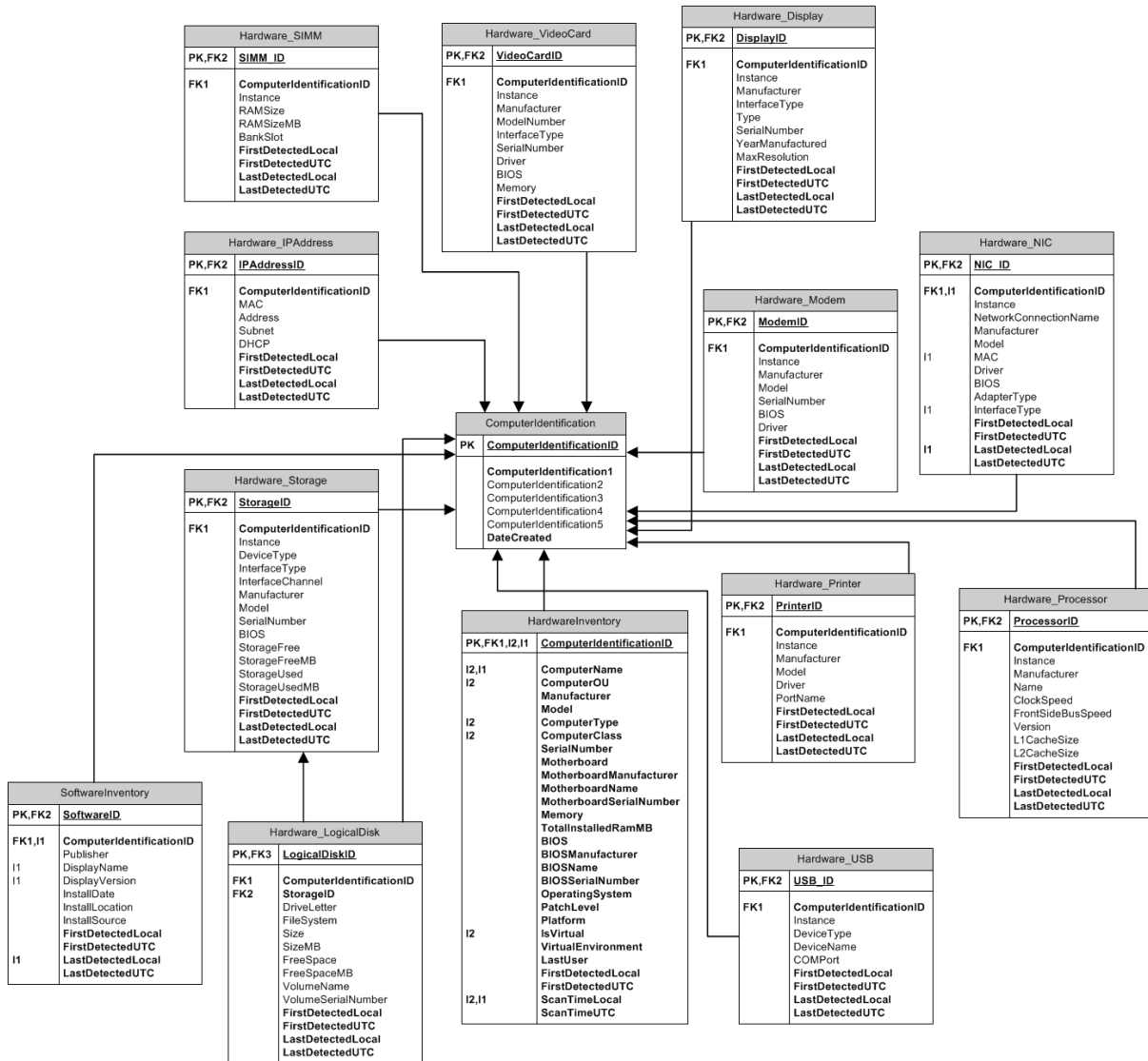
**NOTE:** When viewing this diagram, zoom in for a more precise view. A full printable version of this diagram can be downloaded from the Quest web site.

# Computer Management Profile Data



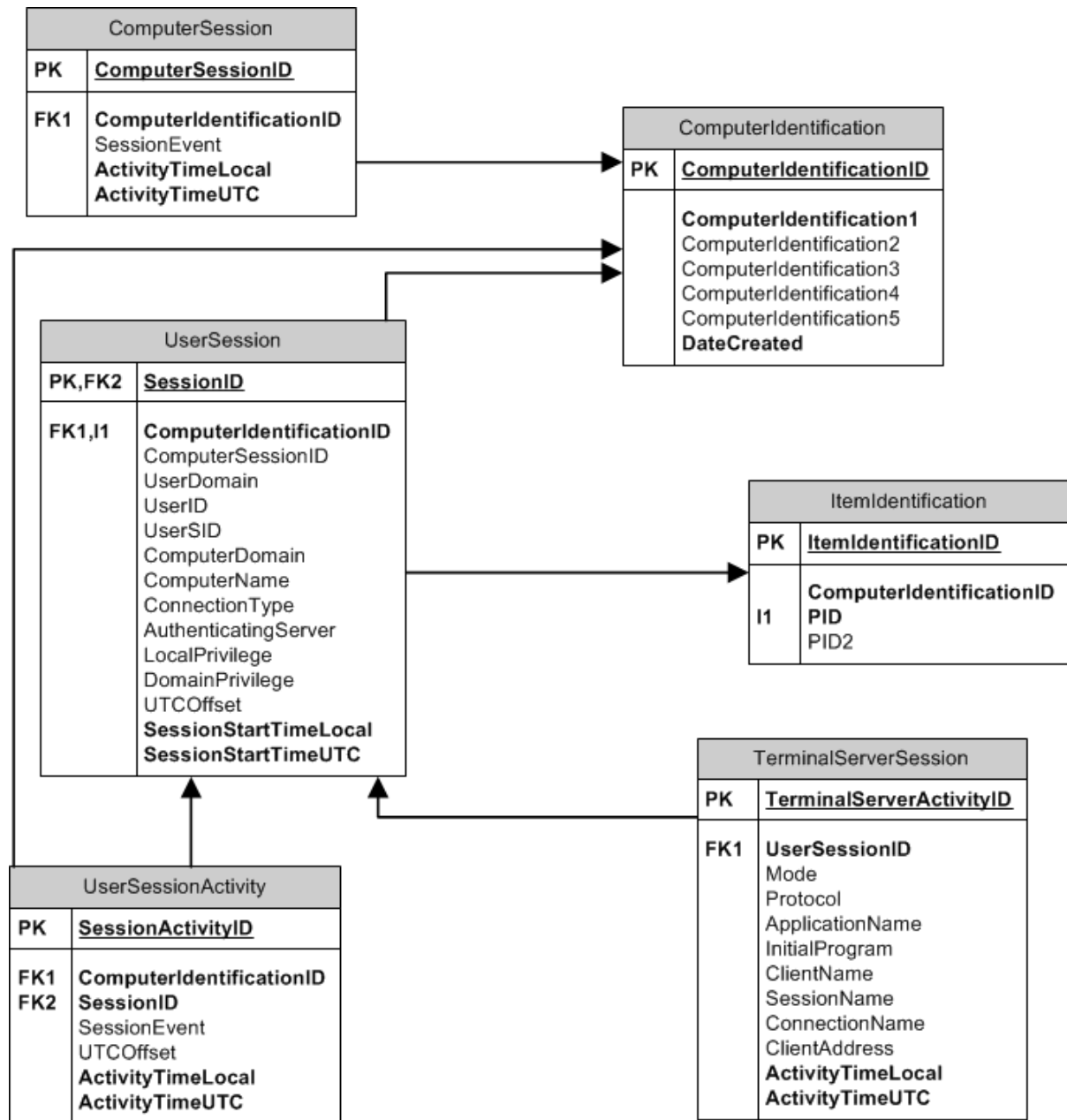
**NOTE:** When viewing this diagram, zoom in for a more precise view. A full printable version of this diagram can be downloaded from the Quest web site.

# Hardware/Software Inventory Data



**NOTE:** When viewing this diagram, zoom in for a more precise view. A full printable version of this diagram can be downloaded from the Quest web site.

# User/Computer Activity Data



**NOTE:** When viewing this diagram, zoom in for a more precise view. A full printable version of this diagram can be downloaded from the Quest web site.



# About Us

---

We are more than just a name. We are on a quest to make your information technology work harder for you. That is why we build community driven software solutions that help you spend less time on IT administration and more time on business innovation. We help you modernize your data center, get you to the cloud quicker and provide the expertise, security and accessibility you need to grow your data-driven business. Combined with Quest's invitation to the global community to be a part of its innovation, and our firm commitment to ensuring customer satisfaction, we continue to deliver solutions that have a real impact on our customers today and leave a legacy we are proud of. We are challenging the status quo by transforming into a new software company. And as your partner, we work tirelessly to make sure your information technology is designed for you and by you. This is our mission, and we are in this together. Welcome to a new Quest. You are invited to join the Innovation™.

## Our brand, our vision. Together.

Our logo reflects our story: innovation, community and support. An important part of this story begins with the letter Q. It is a perfect circle, representing our commitment to technological precision and strength. The pace in the Q itself symbolizes our need to add the missing piece – you – to the community, to the new Quest.

## Contacting Quest

For sales or other inquiries, visit <https://www.quest.com/company/contact-us.aspx> or call +1-949-754-8000.

## Technical support resources

Technical support is available to Quest customers with a valid maintenance contract and customers who have trial versions. You can access the Quest Support Portal at <https://support.quest.com>.

The Support Portal provides self-help tools you can use to solve problems quickly and independently, 24 hours a day, 365 days a year. The Support Portal enables you to:

- Submit and manage a Service Request
- View Knowledge Base articles
- Sign up for product notifications
- Download software and technical documentation
- View how-to-videos
- Engage in community discussions
- Chat with support engineers online
- View services to assist you with your product