

# Toad® for SAP® Solutions 3.2

## Release Notes

June, 2017

### About Toad® for SAP® Solutions

With Toad, developers and database administrators can use a familiar, proven tool to manage databases. Toad empowers developers and administrators, of varying skill levels, to rapidly create and execute queries, automate database object management, and develop SQL more efficiently.

Toad also provides utilities to compare, extract and search for objects, manage projects, import/export data and administer the database, while increasing your productivity and delivering access to an active user community.

## New Features

In Toad® for SAP® Solutions 3.2 the following new features were implemented:

### General Features

**Toad is now 64-bit!**

- Toad® for SAP® Solutions is now available in both 32 and 64 bit versions
- 64-bit version allows you to perform your DB activities more quickly and seamlessly



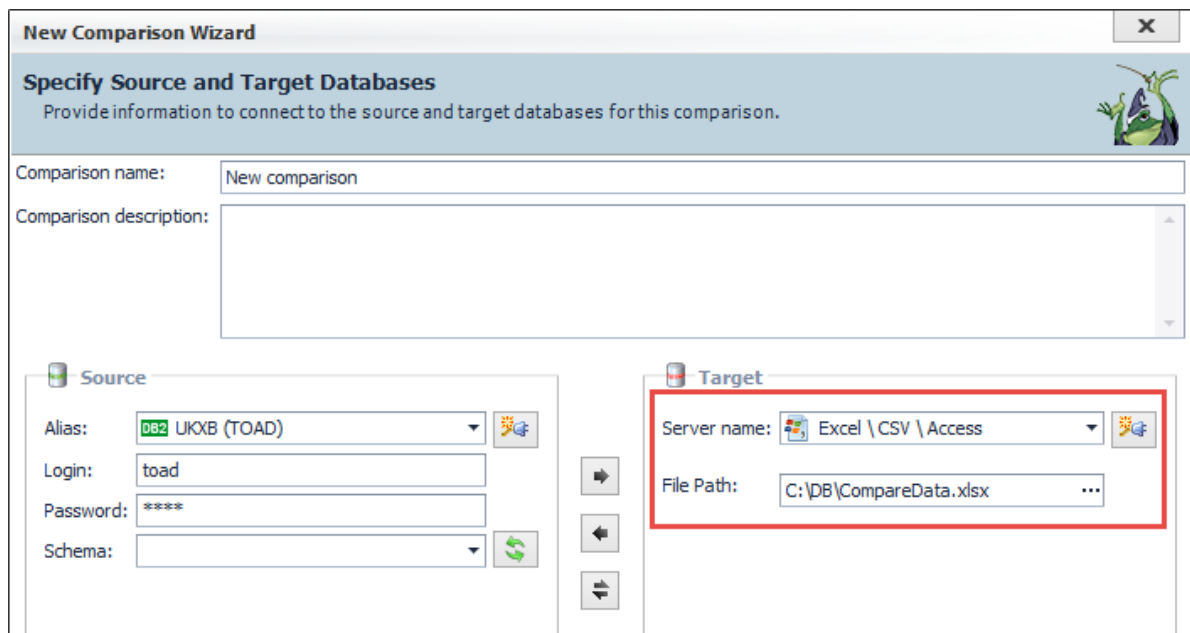
### Support for Microsoft® Windows® 10

- Microsoft Windows 10 is now fully tested and supported
- See [System Requirements](#) for more information on supported OSs

## Data Compare Enhancements

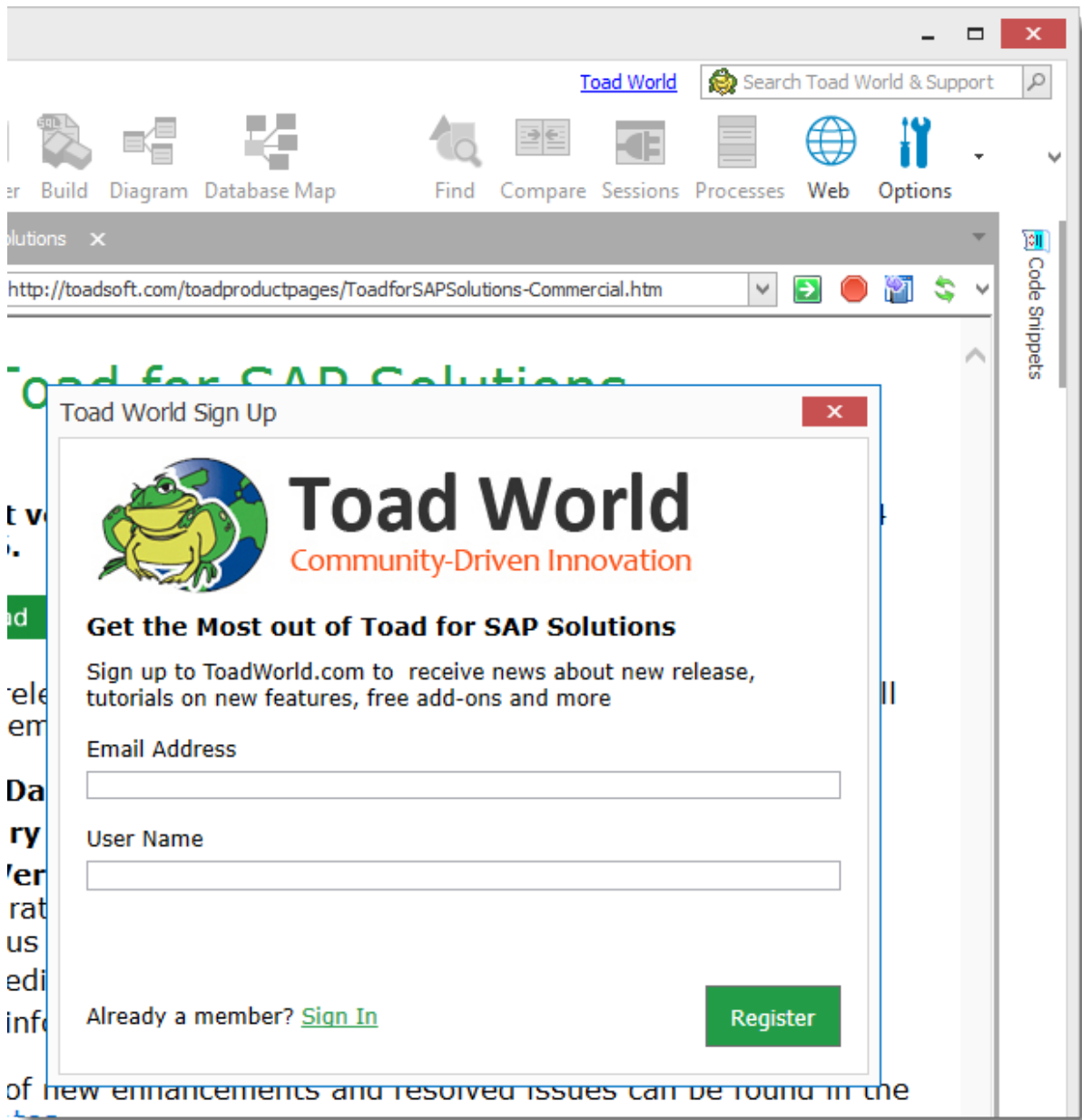
### Data Compare to files

- Click Tools | Compare | Data Compare to launch **Data Compare Wizard**
- Select Excel \ CSV \ Access to start **Data Compare** with a file



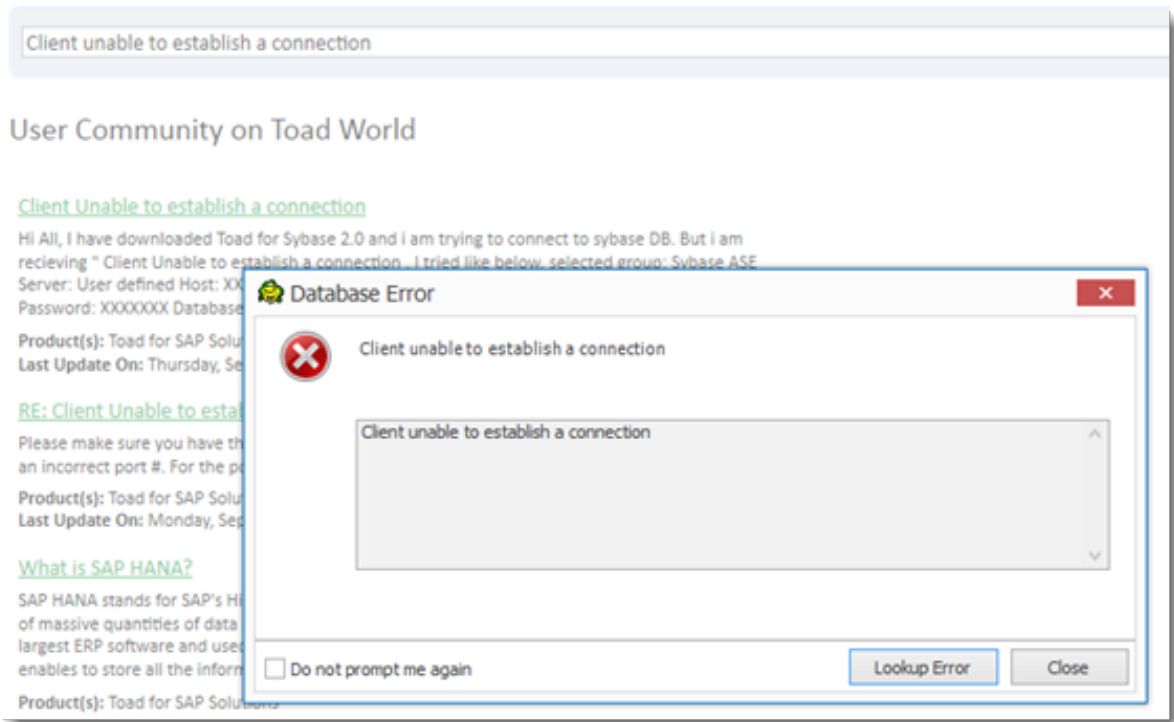
### Integration of Toad World Sign-in

- You now can easily register and sign in to Toad World directly in the Toad
- Use Toad World to access various information articles and training videos about Toad, ask question in our forums or give the developers feedback about Toad® for SAP® Solutions

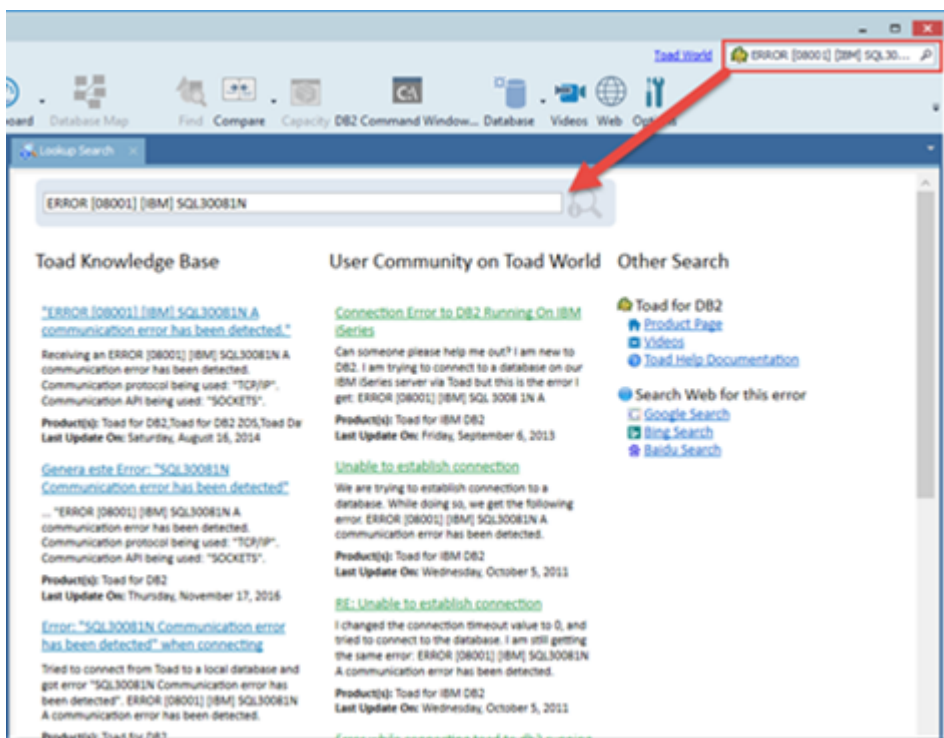


### Integration of Knowledge Base and Toad World Search

- Quickly look up errors on our Support site or directly in Toad

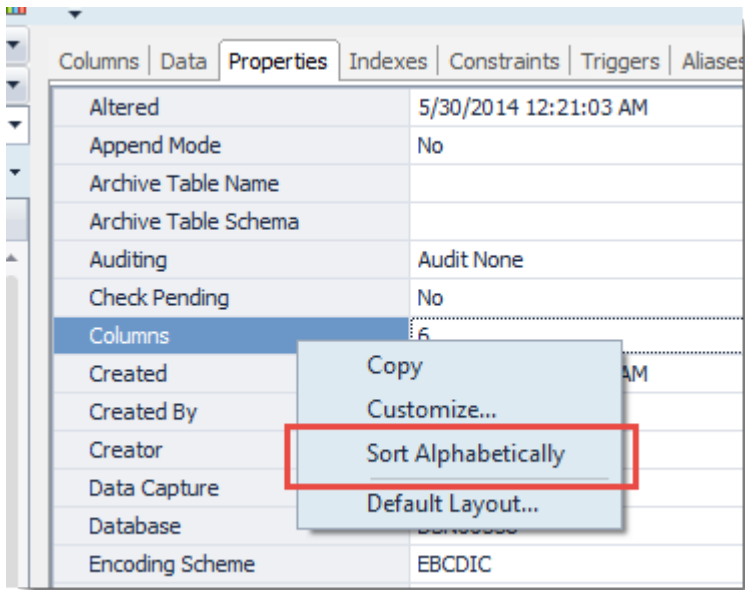


- Use the Search field to search our knowledge base and Toad World at the same time

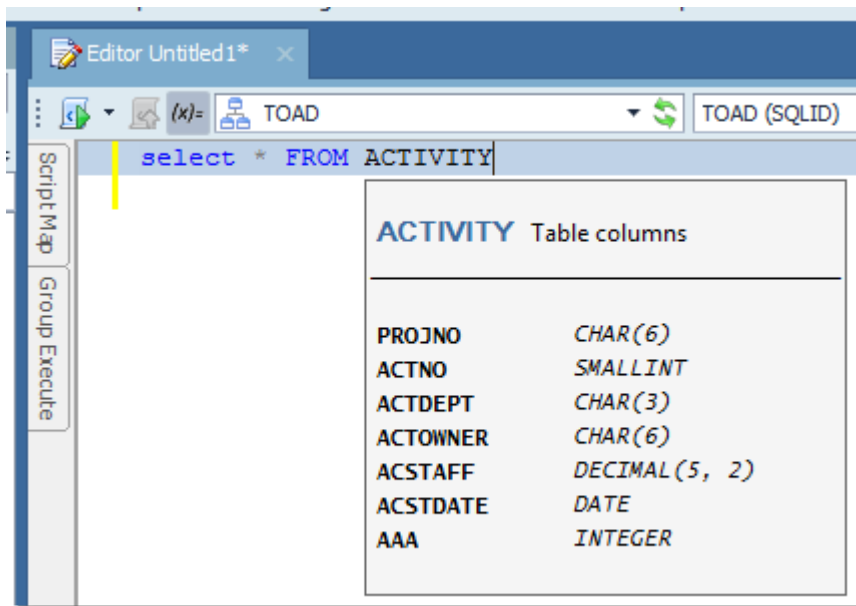


## Other Enhancements

- All property grids can now be sorted
- Right-click any grid in Object Editors and select **Sort Alphabetically**

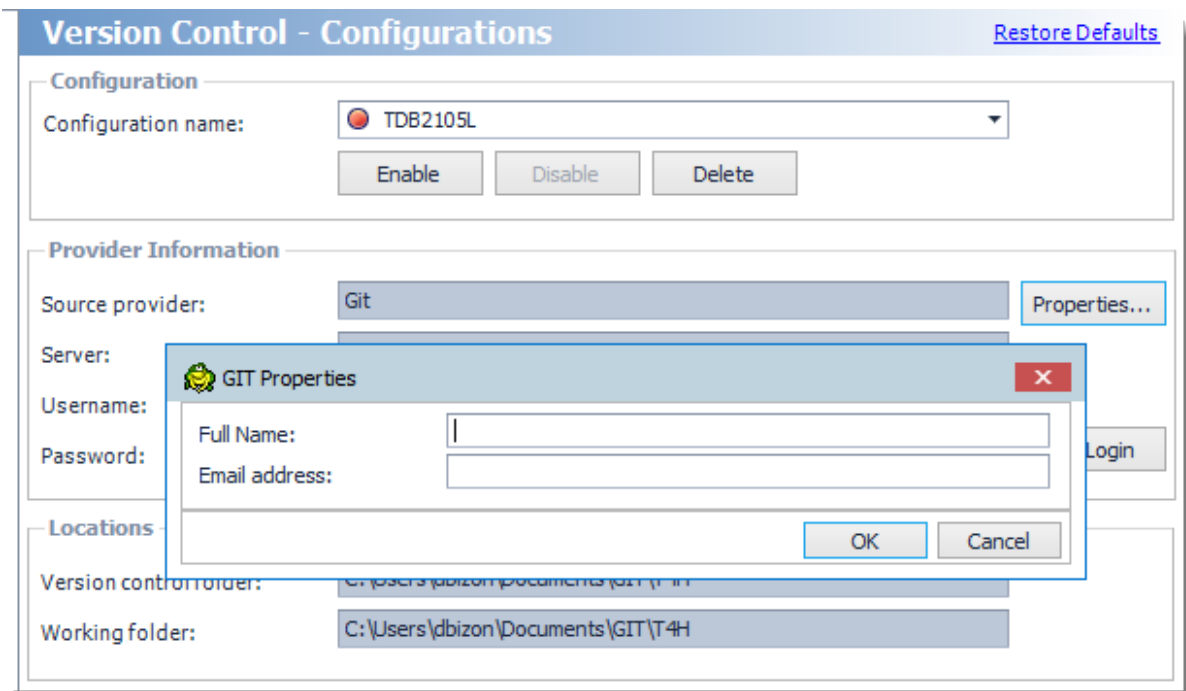


- You can now turn off popup information for objects in **SQL Editor**
- Uncheck Show information pop-ups for Objects in **Options | Editor | Tools**



## Git Support in Version Control

- Toad now supports Git



- Toadworks with your local repository. You now can make commits directly in Toad

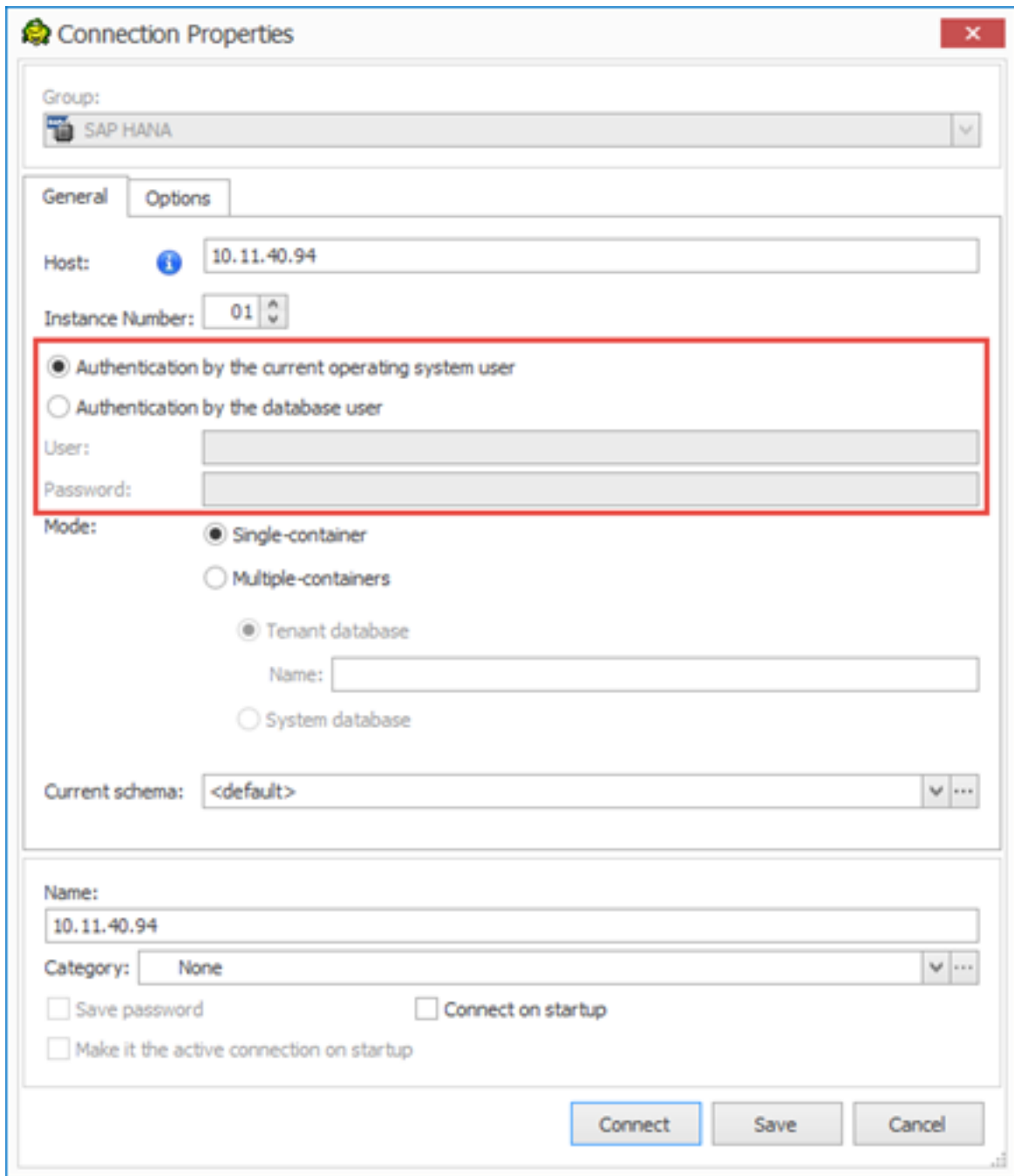
## SAP HANA Enhancements

### SAP HANA SPS11 Features

- Select the database mode. SAP HANA supports numerous isolated databases in a single HANA system. Although each database in a multiple-container system is isolated, cross-queries can be performed and all databases share the same installation, resources, and administration.
- **Single-container** — Select for single-container systems. These can be converted to multiple-container systems.
- **Multiple-container** — Select for multiple-container systems. These systems always have one system database, which is used for administration, and any number of tenant databases.
- Select whether you want to connect to the **System** or **Tenant database**. Users connect to a specific tenant database within the system using its database name.

### Support for SAP HANA Single Sign-On Authentication

- You now can connect to your HANA database using your operating system authentication or by entering your database user authentication



See [Resolved Issues](#) for more enhancements and resolved issues in this release of Toad® for SAP® Solutions.

## Learn More

Get the latest product information, find helpful resources, test the product betas, and join a discussion with the Toad® for SAP® Solutions team and other community members. Join the Toad® for SAP® Solutions community at <http://www.toadworld.com/products/toad-for-sap-solutions/default.aspx>.

# System Requirements

## Client Requirements

Before installing Toad, ensure that your client system meets the following minimum hardware and software requirements:

Requirement	Details
<b>Platform</b>	2 GHz processor (recommended minimum)
<b>Memory</b>	4 GB of RAM minimum, 16 GB recommended <b>Note:</b> The memory required may vary based on the following: <ul style="list-style-type: none"><li>• Applications that are running on your system when using Toad</li><li>• Size and complexity of the database</li><li>• Amount of database activity</li><li>• Number of concurrent users accessing the database</li></ul>
<b>Hard Disk Space</b>	212MB to run Toad <b>Note:</b> The disk space required may vary based on the edition of Toad selected for installation.
<b>Operating System</b>	Windows Vista® Service Pack 2 (32-bit or 64-bit) Windows Server® 2008 Service Pack 2 (32-bit or 64-bit) Windows Server® 2008 R2 Service Pack 1 (64-bit) Windows Server® 2012 Windows Server® 2012 R2 Windows® 7 (32-bit or 64-bit) Windows® 8 (32-bit or 64-bit) Windows® 8.1 (32-bit or 64-bit) Windows® 10
<b>.NET Framework</b>	Microsoft® .NET Framework 4.5.1
<b>Additional Requirements</b>	<b>Web Browser</b> Microsoft® Internet Explorer® 7.0 or later <b>Screen</b> Toad supports screen resolutions up to 3200 x 1800 and display DPI settings up to 150%

## Server Requirements

Before installing Toad, ensure that your server meets the following minimum hardware and software requirements:

Requirement	Details
<b>Database Server</b>	SAP ASE 12.5.4, 15.0.2, 15.0.3, 15.5, 15.7, 16 SAP IQ 15, 16 SAP SQL Anywhere 10, 11, 12 SAP HANA SPS 08, SPS 09, SPS 10, SPS 11, SPS 12, SAP HANA 2.0, SAP HANA 2.0 SPS 02



# Virtualization Support

**Application Virtualization** Limited testing has been performed for Citrix® XenApp™ 5.0 on Windows Server 2003 and Citrix XenApp 6.5 on Windows Server 2008 R2.  
Limited testing has been performed for Citrix support on Windows Server 2003 Enterprise Server (Service Pack 2) using the MetaFrame Presentation Server 5.0 and Citrix Presentation Server Clients 10.2.

**Note:** Toad may work in virtualization environments other than the ones in which it was tested.

## Resolved Issues and Enhancements

The following is a list of issues addressed and enhancements implemented in this release of Toad® for SAP® Solutions.

Feature	Resolved Issue	Defect ID
Connection Manager	It is now possible to change the language when connecting to an ASE instance.	QAT-10368/3243367-1
Debugger	A time-out error when running Debugger was fixed.	QAT-10678/4005766-1
General	Toad now supports a maximum precision of 26 numbers for a decimal type for SAP ASE.	QAT-10515/3984327-1
	An arithmetic overflow error during queries of very large databases was fixed.	QAT-10766/3984327-1
Object Editor (DOE)	Creating indexes on SAP IQ does not throw errors anymore.	TSY-2032/3498596-1
Object Explorer	Inserting NULL values into some columns does not throw errors on SAP ASE anymore.	TSY-2033/3496350-1
	Query Builder error related to incorrect loading of table columns was fixed.	TSY-2001/QAT-7518/3295055-1
Schema Compare and Sync	Build Script now includes column(s) for Primary Key of Indexes.	TSY-2006/3329621-1

## Known Issues

The following is a list of issues known to exist at the time of this release.

Feature	Known Issue	Defect ID
Query Builder	In SAP Sybase IQ and SAP Sybase SQL Anywhere, queries with a varchar datatype that contain single quotation marks do not function correctly when generating the query plan. <b>Workaround:</b> Replace single quotation marks with double single quotation marks when generating the explain plan.	ST92945

Feature	Known Issue	Defect ID
	<b>Note:</b> This fix only affects the explain plan code for IQ and SQL Anywhere.	
Debugger	An ASE exception occurs when stepping into or over a function during procedure debugging.	ST94273
Schema Compare	Schema Compare add-in that generates DLL does not currently work from all objects context menus.	TSY-524
	An error "Object reference not set to an instance of an object" displays when some snapshots are opened directly in Toad.	2305673-1/TSY-236
Monitor	The monitor is enabled by default after <b>Tools   Monitor   Process Browser</b> is started but the tooltip still reads 'Enable Monitor'.	TSY-523
	SQL Monitor will take several seconds to load in case of large SQL text data.	2289371-1/TSY-160
Object Editor	In some cases Toad generates DROP and CREATE OR REPLACE at the same time for functions.	TSY-1942
Object Editor	Currently, it is not possible to Grant some of the roles for SAP HANA, incl. sap.hana.admin.roles::Monitoring or sap.hana.admin.roles::Administrator. <b>Workaround:</b> Assign the roles using the procedure from _SYS_REPO: GRANT_ACTIVATED_ROLE.	TSY-1495
Queries	It is not possible to cancel some queries running in the background.	TSY-486
QP5	Items are not aligned properly when "Commas in lists" are configured "Leading with space" in <b>Options   Editor   Formatter</b> .	TSY-260

## Third Party Known Issues

The following is a list of third party issues known to exist at the time of release of Toad® for SAP® Solutions 3.2.

Feature	Known Issue	Defect ID
Connection Manager	An error "System.ArgumentOutOfRangeException 'count' must be non-negative. Parameter name: count" using SAP IQ client 16 was fixed.	TSY-1589/2912320-1
Excel	If an Excel file is open in Toad, you cannot open the same file in a separate Excel instance. To review this and other limitations when using Excel in the Web Browser, see "Considerations When Using the WebBrowser Control" at: <a href="http://support.microsoft.com/kb/304662">http://support.microsoft.com/kb/304662</a> .	ST42486
Export Wizard/ One Click Export	To export to an Office 2003 or 2007 Excel instance, the Office Primary Interop Assemblies (PIAs) must be installed. You can install the PIAs from one of the following locations:	N/A

Feature	Known Issue	Defect ID
	<p><b>2003 PIAs:</b>  <a href="http://www.microsoft.com/downloads/details.aspx?FamilyID=3c9a983a-ac14-4125-8ba0-d36d67e0f4ad&amp;DisplayLang=en">http://www.microsoft.com/downloads/details.aspx?FamilyID=3c9a983a-ac14-4125-8ba0-d36d67e0f4ad&amp;DisplayLang=en</a></p> <p><b>2007 PIAs:</b>  <a href="http://www.microsoft.com/downloads/details.aspx?familyid=59DAEBAA-BED4-4282-A28C-B864D8BFA513&amp;displaylang=en">http://www.microsoft.com/downloads/details.aspx?familyid=59DAEBAA-BED4-4282-A28C-B864D8BFA513&amp;displaylang=en</a></p>	
ADO.Net Driver	Debugger does not allow you to step into or out of procedures.	N/A
Debugger	Debugger support has been discontinued since SAP IQ 16. See <a href="#">SAP IQ Documentation</a> for more information.	TSY-1356
SQL Editor	System procedure sa_get_user_status throws error on IQ 16 due to a new column user_dn_cached_at, which has incorrect timestamp values set. This will be fixed in future updates of SAP IQ. The KBA reference is 2174162. <b>Workaround:</b> Write your own procedure or a view and select only the correct columns (exclude user_dn_cached_at column) or change the incorrect column datatype to varchar instead of timestamp.	TSY-1060

## Getting Started

### Contents of the Release Package

The Toad release package contains the following products:

1. Toad® for SAP® Solutions 3.2
2. Product Documentation, including:
  - Installation Guide
  - Online Help
  - Release Notes

### Installation Instructions

See the [Toad® for SAP® Solutions Installation Guide](#) for more information.

## Toad for SAP Solutions Editions

Each Toad® for SAP® Solutions is packaged with additional Quest products to expand your SAP Solutions experience. The following products may be part of your Toad for SAP Solutions Edition:

[Toad for SAP Solutions 3.2](#)

[Benchmark Factory 8.0](#)

[SQL Optimizer for SAP ASE 3.8.0](#)

[Spotlight on SAP ASE 2.11.0](#)

[Toad Data Modeler 6.2](#)

The following Toad® for SAP® Solutions editions are available:

<b>Edition</b>	<b>Licensed</b>
Toad® for SAP® Solutions Base Edition	Toad® for SAP® Solutions Base
Toad® for SAP® Solutions Xpert Edition	Toad® for SAP® Solutions Xpert SQL Optimizer for SAP ASE
Toad® for SAP® Solutions Developer Edition	Toad for SAP Solutions Xpert SQL Optimizer for SAP ASE Benchmark Factory
Toad® for SAP® Solutions DBA Edition	Toad for SAP Solutions Xpert Benchmark Factory for Databases Spotlight on SAP ASE Toad Data Modeler
Toad® for SAP® Solutions DB Admin Module	DB Admin Module

**i** NOTE: The DB Admin Module Add-on can be added to any edition of Toad.

**i** IMPORTANT: Your license key determines the edition and will enable Toad for SAP Solutions functionality accordingly. In many cases, if functionality is disabled within Toad, you may not have an appropriate license to use it. When Toad is running, you can see which components are licensed by selecting **Help | About**.

## Product Licensing

### To activate a trial license

1. In the Licensing dialog, enter your license (Authorization) key.
2. Enter the site message included with the license key.

### To activate a purchased commercial license

1. In the Licensing dialog, enter your license (Authorization) key.
2. Enter the site message included with the license key.

## Globalization

This section contains information about installing and operating this product in non-English configurations, such as those needed by customers outside of North America. This section does not replace the materials about supported platforms and configurations found elsewhere in the product documentation.

This release is Unicode-enabled and supports any character set. It supports simultaneous operation with multilingual data. This release is targeted to support operations in the following regions: North America, Western Europe and Latin America, Central and Eastern Europe, Far-East Asia, Japan.

This release has the following known capabilities or limitations: No known limitations.

## For More Information

Get the latest product information, find helpful resources, test the product betas, and join a discussion with the Toad® for SAP® Solutions team and other community members. Join the Toad® for SAP® Solutions community at <http://www.toadworld.com/products/toad-for-sap-solutions/default.aspx>.

## About Quest

We are more than just a name

We are on a quest to make your information technology work harder for you. That is why we build community-driven software solutions that help you spend less time on IT administration and more time on business innovation. We help you modernize your data center, get you to the cloud quicker and provide the expertise, security and accessibility you need to grow your data-driven business. Combined with Quest's invitation to the global community to be a part of its innovation, and our firm commitment to ensuring customer satisfaction, we continue to deliver solutions that have a real impact on our customers today and leave a legacy we are proud of. We are challenging the status quo by transforming into a new software company. And as your partner, we work tirelessly to make sure your information technology is designed for you and by you. This is our mission, and we are in this together. Welcome to a new Quest. You are invited to Join the Innovation.

Our brand, our vision. Together.

Our logo reflects our story: innovation, community and support. An important part of this story begins with the letter Q. It is a perfect circle, representing our commitment to technological precision and strength. The space in the Q itself symbolizes our need to add the missing piece — you — to the community, to the new Quest.

For sales or other inquiries, visit [www.quest.com/company/contact-us.aspx](http://www.quest.com/company/contact-us.aspx) or call +1 949 754-8000.

## Technical Support Resources

Technical support is available to Quest customers with a valid maintenance contract and customers who have trial versions. You can access the Quest Support Portal at <https://support.quest.com>.

The Support Portal provides self-help tools you can use to solve problems quickly and independently, 24 hours a day, 365 days a year. The Support Portal enables you to:

- Submit and manage a Service Request
- View Knowledge Base articles
- Sign up for product notifications
- Download software and technical documentation
- View how-to-videos
- Engage in community discussions
- Chat with support engineers online
- View services to assist you with your product

## Copyright

© 2017 Quest Software Inc.

ALL RIGHTS RESERVED.

This guide contains proprietary information protected by copyright. The software described in this guide is furnished under a software license or nondisclosure agreement. This software may be used or copied only in accordance with the terms of the applicable agreement. No part of this guide may be reproduced or transmitted in any form or by any means, electronic or mechanical, including photocopying and recording for any purpose other than the purchaser's personal use without the written permission of Quest Software Inc.

The information in this document is provided in connection with Quest Software products. No license, express or implied, by estoppel or otherwise, to any intellectual property right is granted by this document or in connection with the sale of Quest Software products. EXCEPT AS SET FORTH IN THE TERMS AND CONDITIONS AS SPECIFIED IN THE LICENSE AGREEMENT FOR THIS PRODUCT, QUEST SOFTWARE ASSUMES NO LIABILITY WHATSOEVER AND DISCLAIMS ANY EXPRESS, IMPLIED OR STATUTORY WARRANTY RELATING TO ITS PRODUCTS INCLUDING, BUT NOT LIMITED TO, THE IMPLIED WARRANTY OF MERCHANTABILITY, FITNESS FOR A PARTICULAR PURPOSE, OR NON-INFRINGEMENT. IN NO EVENT SHALL QUEST SOFTWARE BE LIABLE FOR ANY DIRECT, INDIRECT, CONSEQUENTIAL, PUNITIVE, SPECIAL OR INCIDENTAL DAMAGES (INCLUDING, WITHOUT LIMITATION, DAMAGES FOR LOSS OF PROFITS, BUSINESS INTERRUPTION OR LOSS OF INFORMATION) ARISING OUT OF THE USE OR INABILITY TO USE THIS DOCUMENT, EVEN IF QUEST SOFTWARE HAS BEEN ADVISED OF THE POSSIBILITY OF SUCH DAMAGES. Quest Software makes no representations or warranties with respect to the accuracy or completeness of the contents of this document and reserves the right to make changes to specifications and product descriptions at any time without notice. Quest Software does not make any commitment to update the information contained in this document.

If you have any questions regarding your potential use of this material, contact:

Quest Software Inc.  
Attn: LEGAL Dept  
4 Polaris Way  
Aliso Viejo, CA 92656

Refer to our web site ([www.quest.com](http://www.quest.com)) for regional and international office information.

#### **Patents**

Quest Software is proud of our advanced technology. Patents and pending patents may apply to this product. For the most current information about applicable patents for this product, please visit our website at [www.quest.com/legal](http://www.quest.com/legal).

#### **Trademarks**

Quest, Quest Software, SQL Navigator, vWorkspace, Toad, and the Quest logo are trademarks of Quest Software Inc. in the U.S.A. and other countries. For a complete list of Quest Software trademarks, please visit our website at [www.quest.com/legal](http://www.quest.com/legal). Microsoft, Windows, Windows Server, Windows Vista, Visual Studio, SharePoint, Access and Excel are either registered trademarks or trademarks of Microsoft Corporation in the United States and/or other countries. Oracle is a trademark or registered trademark of Oracle and/or its affiliates in the United States and other countries. Citrix® and XenApp™ are trademarks of Citrix Systems, Inc. and/or one or more of its subsidiaries, and may be registered in the United States Patent and Trademark Office and in other countries. SAP is the registered trademark of SAP AG in Germany and in several other countries. Subversion is a trademark of the Apache Software Foundation. All other trademarks, servicemarks, registered trademarks, and registered servicemarks are property of their respective owners.