

Toad® for IBM® DB2® 6.3

Release Notes

[\(Click here for previous versions\)](#)

Friday, August 4, 2017

About Toad® for IBM® DB2®

With Toad, developers and database administrators can use a familiar, proven tool to manage databases. Toad empowers developers and administrators, of varying skill levels, to rapidly create and execute queries, automate database object management, and develop SQL more efficiently.

Toad also provides utilities to compare, extract and search for objects, manage projects, import/export data and administer the database, while increasing your productivity and delivering access to an active user community.

New Features

In Toad® for IBM® DB2® 6.3 the following new features were implemented:

General Features

Toad is now 64-bit!

- Toad® for IBM® DB2® is now available in both 32 and 64 bit versions
- 64-bit version allows you to perform your DB activities more quickly and seamlessly
- However a 64-bit version of Toad requires 64-bit IBM DB2 drivers



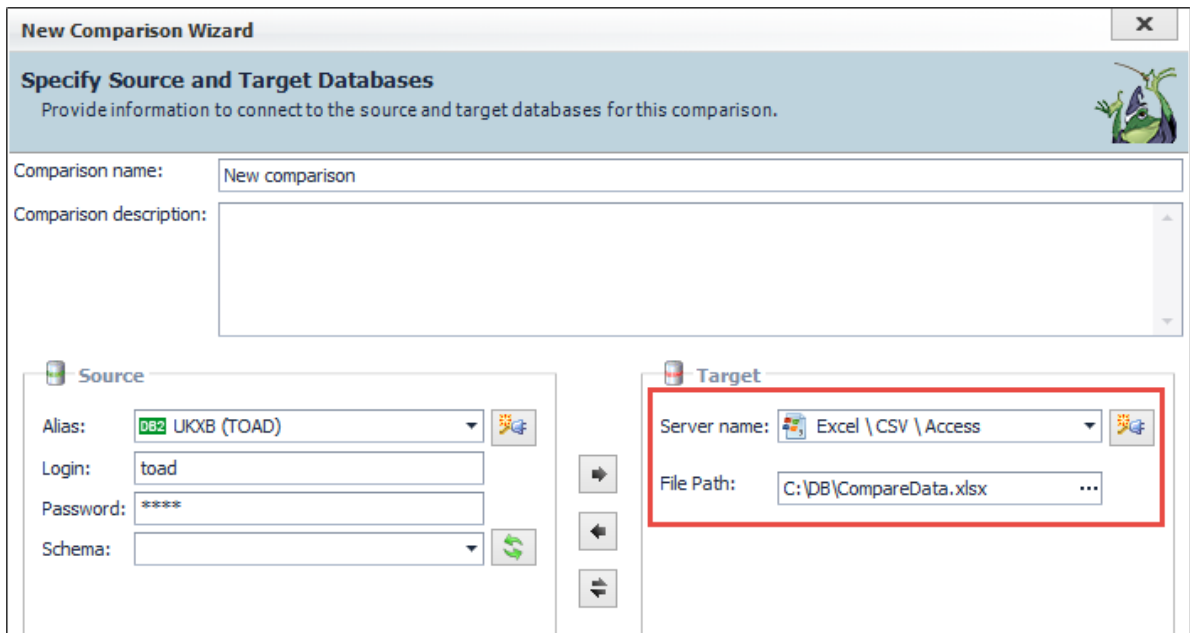
Support for Microsoft® Windows® 10

- Microsoft Windows 10 is now fully tested and supported
- See [System Requirements](#) for more information on supported OSs

Data Compare Enhancements

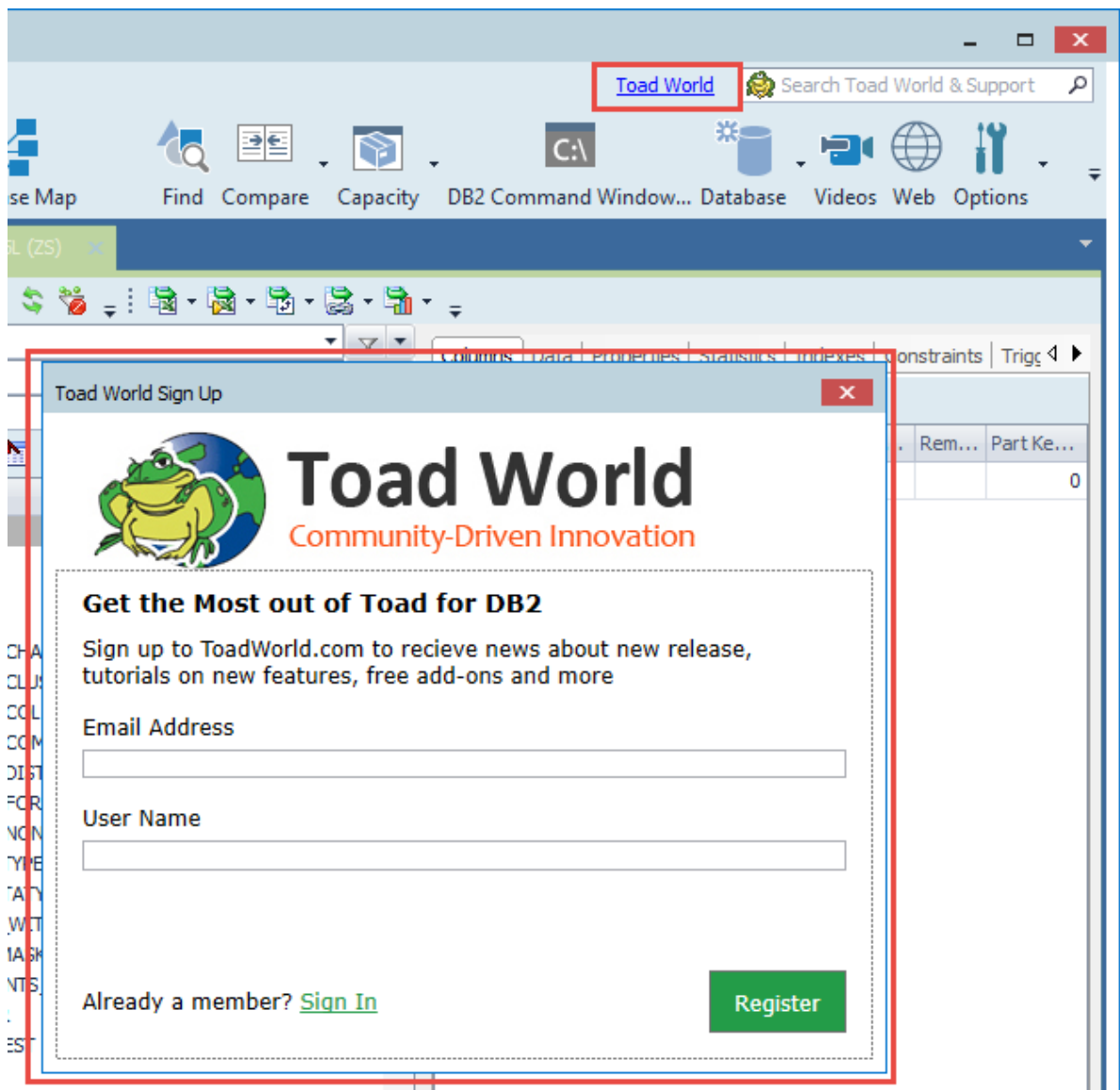
Data Compare to files

- Click Tools | Compare | Data Compare to launch **Data Compare Wizard**
- Select Excel | CSV | Access to start **Data Compare** with a file



Integration of Toad World Sign-in

- You now can easily register and sign in to Toad World directly in the Toad
- Use Toad World to access various information articles and training videos about Toad, ask question in our forums or give the developers feedback about Toad® for IBM® DB2®

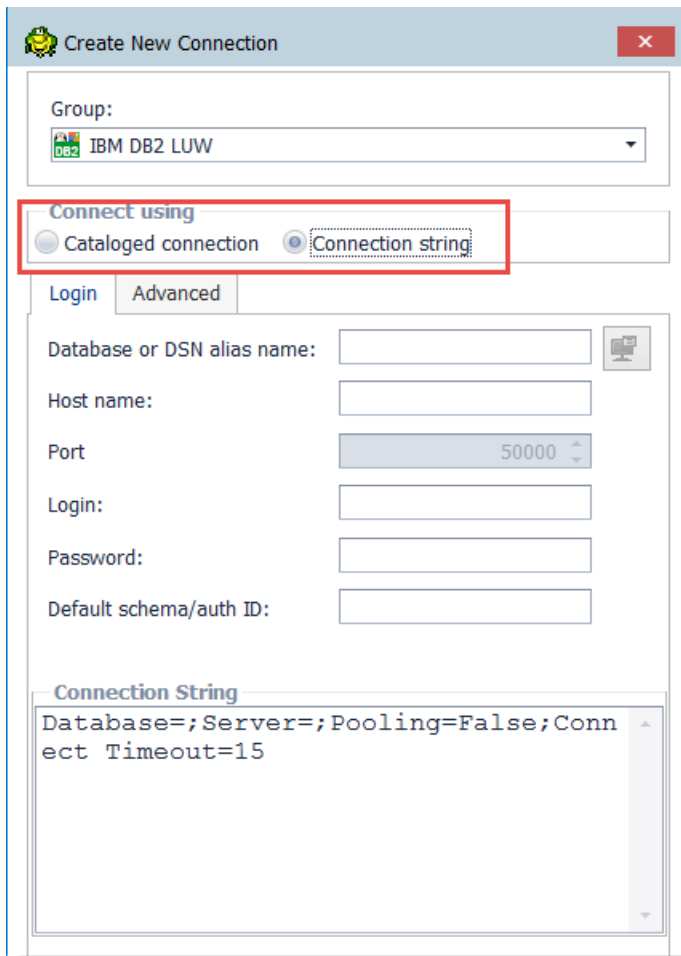


Support for IBM Data Server Driver

- Toad® for IBM® DB2® now supports IBM Data Server Driver
- Now you do not need a default IBM DB2 client and can make use of DSD Package instead
- You can import and DSD configuration files easily by clicking **Create Toad connection profiles for all DB2 databases in the DB2 client catalog or driver configuration file that Toad is using**

Custom Connection String

- You now can connect to a DB2 database by directly specifying the host, port and database name like in IBM Data Server Driver environment
- When connected via a connection string no DB2 instance is created
- Click **New connection** and then select Connection string to enter the custom connection string



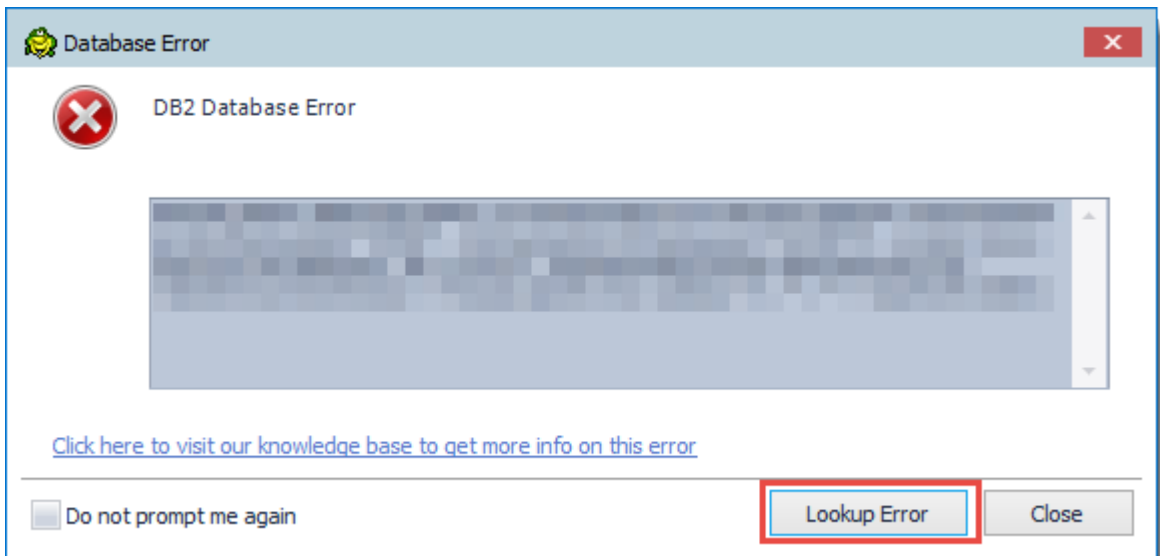
New Videos Button

- You can now easily access product and training videos by clicking a new button Videos from the Toad toolbar

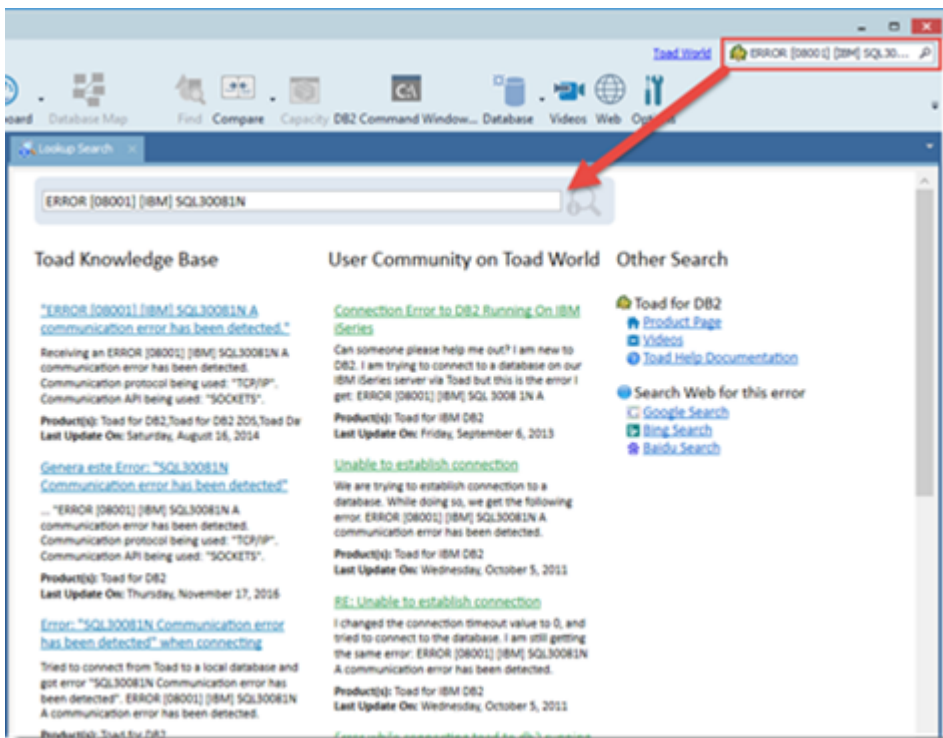


Integration of Knowledge Base and Toad World Search

- Quickly look up errors on our Support site or directly in Toad

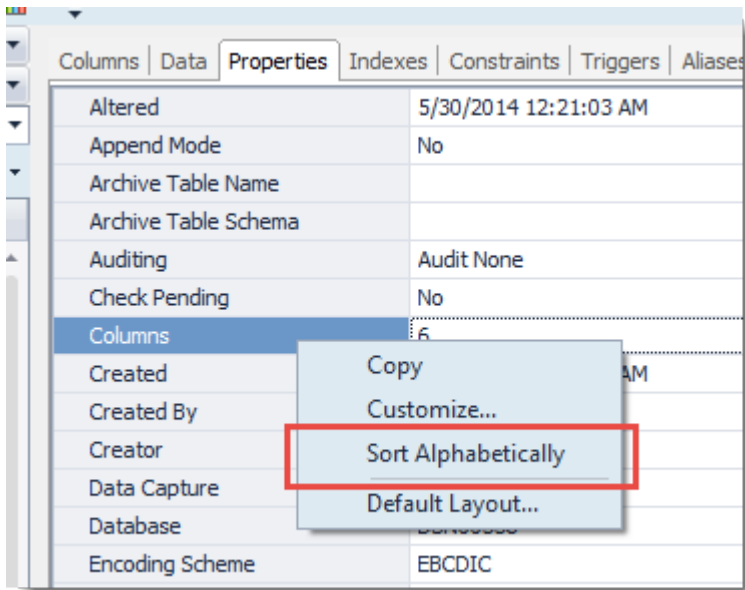


- Use the Search field to search our knowledge base and Toad World at the same time

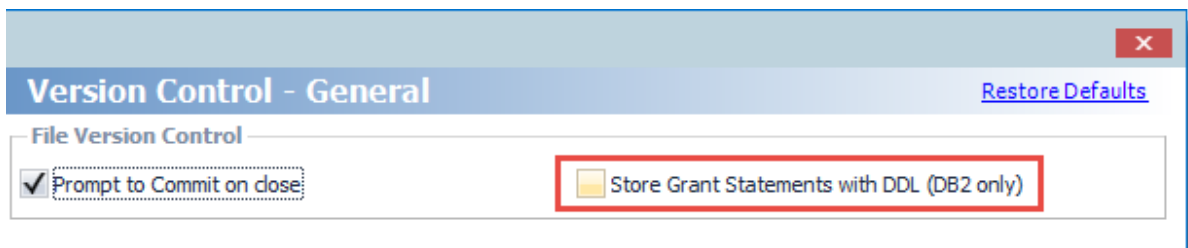


Other Enhancements

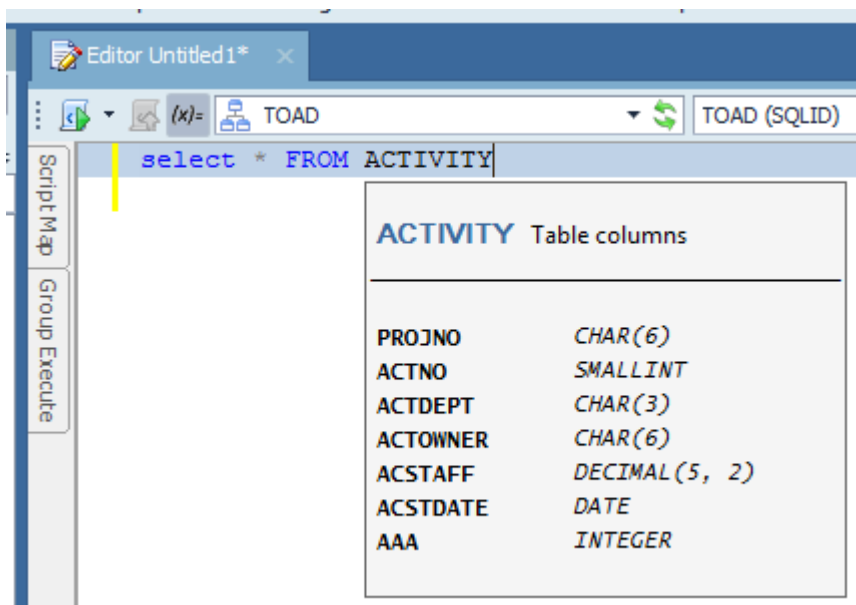
- All property grids can now be sorted
- Right-click any grid in Object Editors and select **Sort Alphabetically**



- You can track your grant statements together with script in Version Control
- Check the option in **Options | Version Control | General**

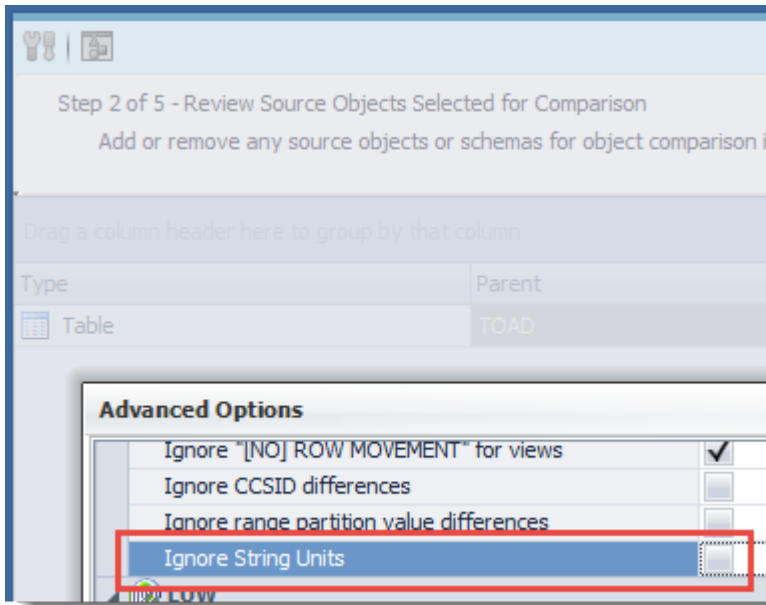


- You can now turn off popup information for objects in **SQL Editor**
- Uncheck Show information pop-ups for Objects in **Options | Editor | Tools**



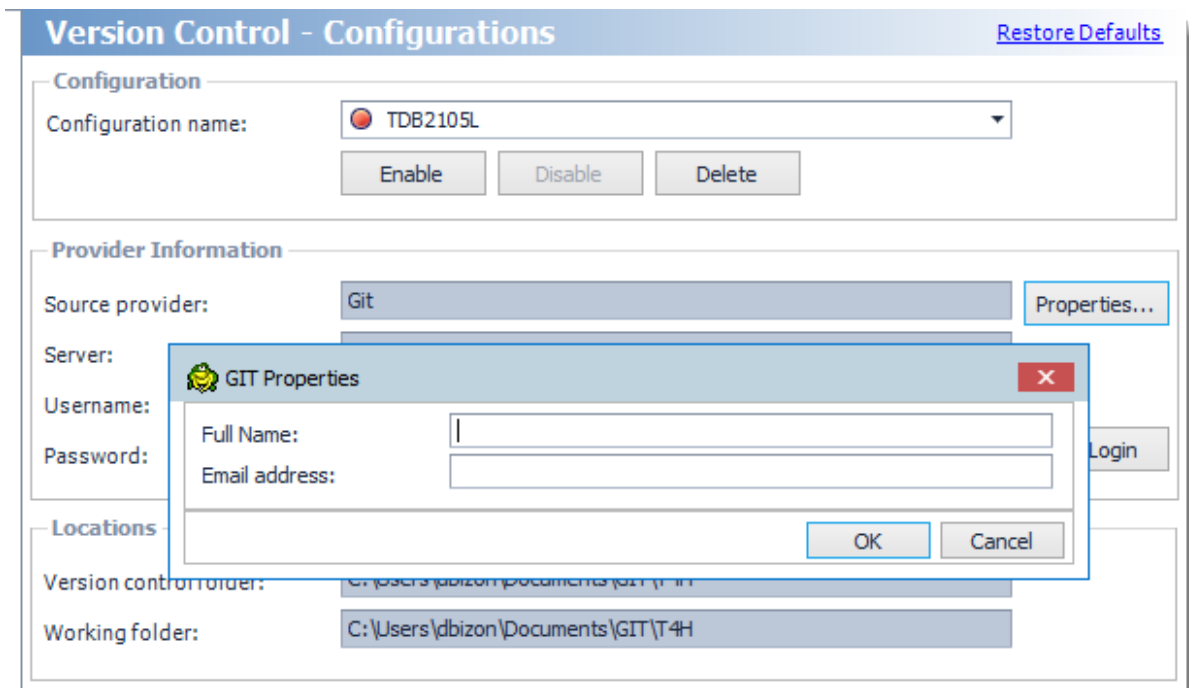
Compare Object Enhancements

- A new Advanced option in Compare Object allows you to ignore String Units



Git Support in Version Control

- Toad now supports Git



LUW Specific Features

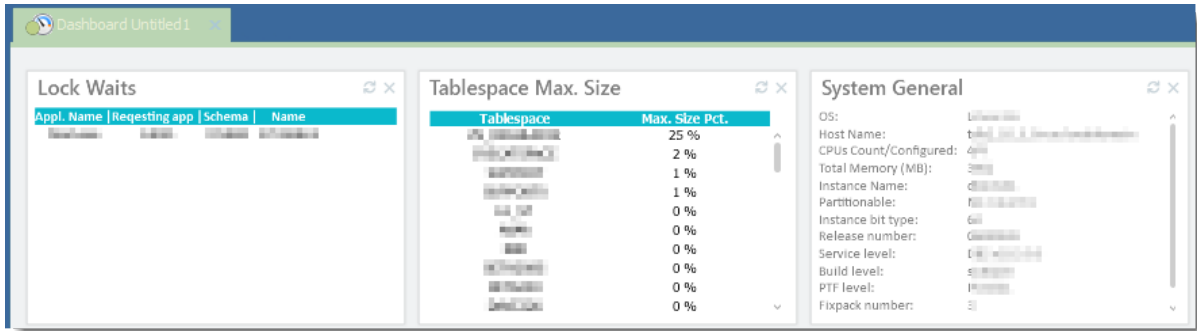
LUW Dashboard

- The following new snippets were implemented for Toad:

Lock Waits - Displays Lock Waits from the active connection

Tablespace Max. Size - Shows percentage of maximum tablespace size for a given connection

System General - Displays detailed DB2 system information



Support for IBM DB2 LUW 11

- Toad now supports connection to and various features of the latest IBM DB2 11
- Toad now includes automatic configuration parameters during compare of DB and DBM parameters

New Built-in Aggregate & Scalar Functions in Snippets

- Toad offers new Aggregate and Datetime Scalar Functions in Code Snippets

Support for New options for ADMIN_MOVE_TABLE

- New options Report and Terminate are now supported

Support for CHAR(255) Columns

- Table Object Editors now support Character Length 255

Support for the Latest DB2 Utilities Changes

- REORG, RUNSTATS syntax changes
- Support for STOSPACE Utility

New Options for Backup Database

- Backup Database now supports No Tablespace option

New CREATE FUNCTION Statement for User-Defined Aggregate Functions

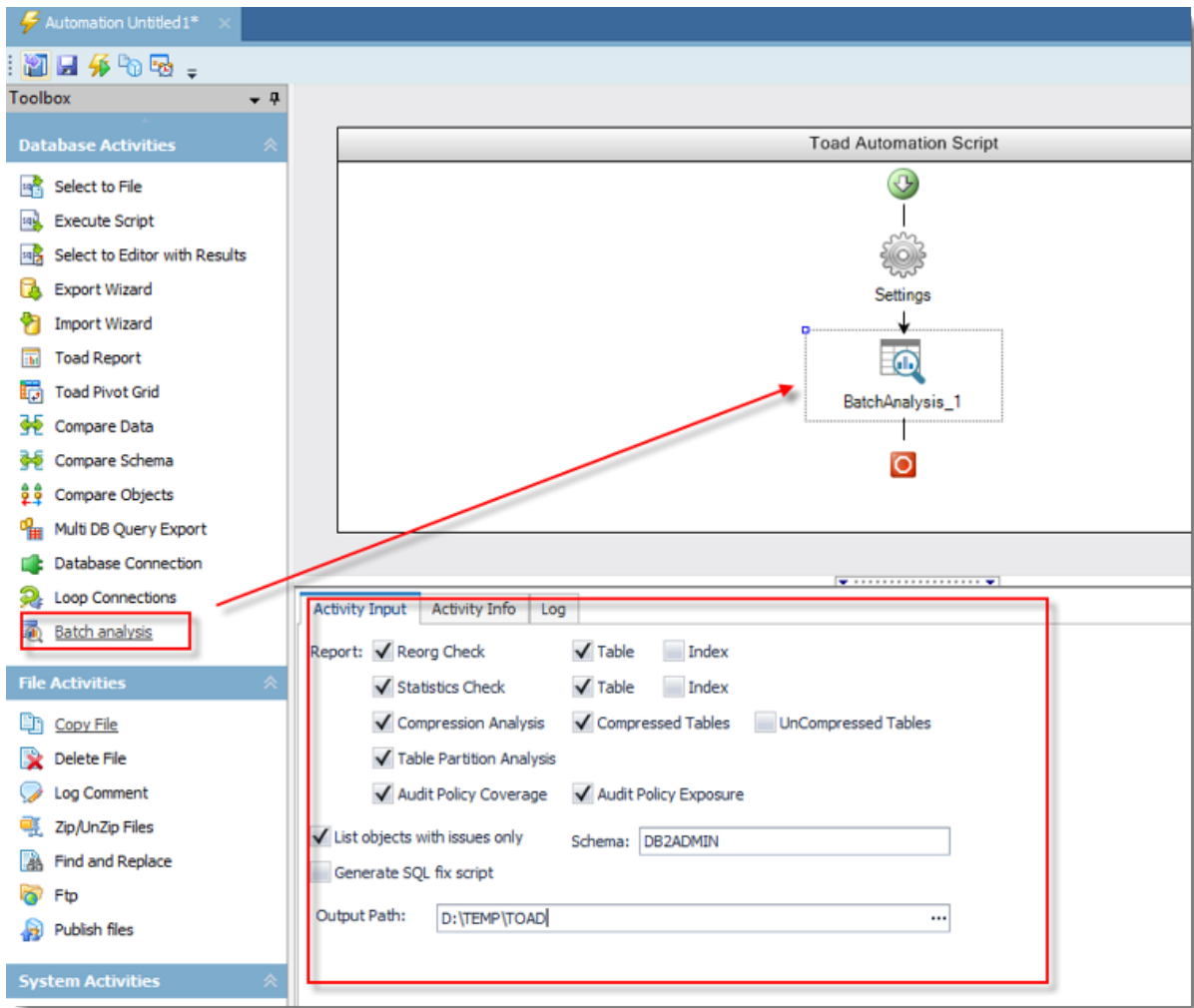
- User Defined Aggregate Functions are now supported by Toad® for IBM® DB2®

Support for New DBM and DB Configuration Parameters

Database configuration parameters	APPLHEAPSZ CATALOGCACHE_SZ dbheap rec_his_retentn stat_heap_sz stmheap
Database manager configuration parameters	mon_heap_sz INSTANCE_MEMORY

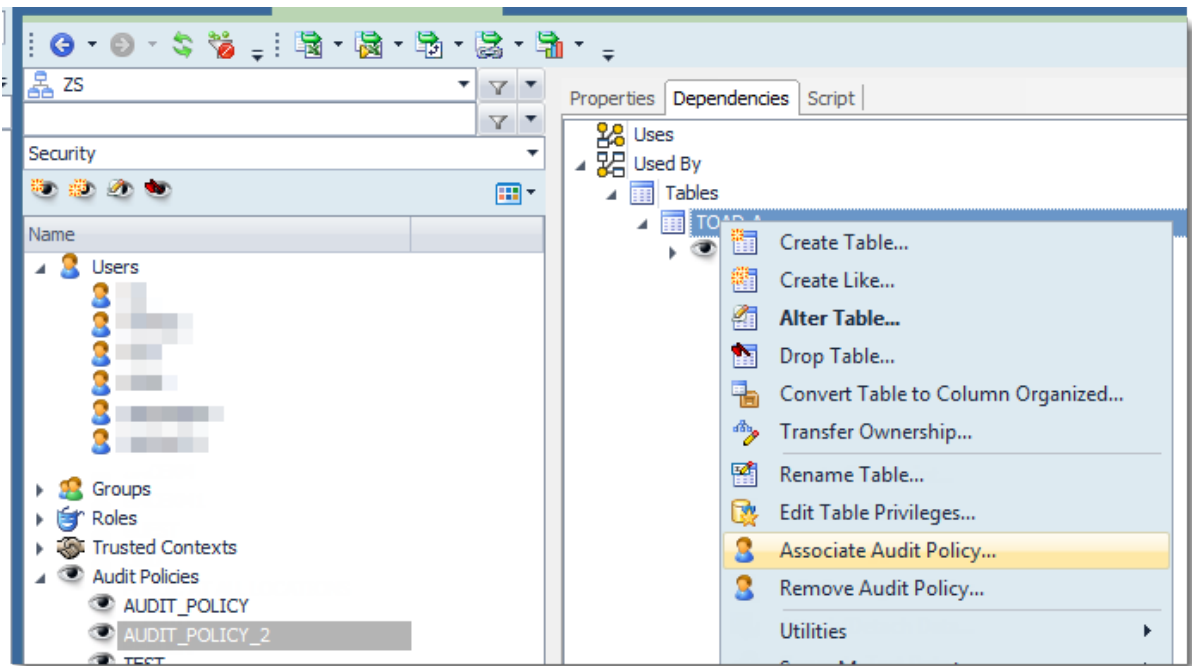
Batch Analysis

- Batch Analysis can now be easily launched as a part of Toad **Automation**



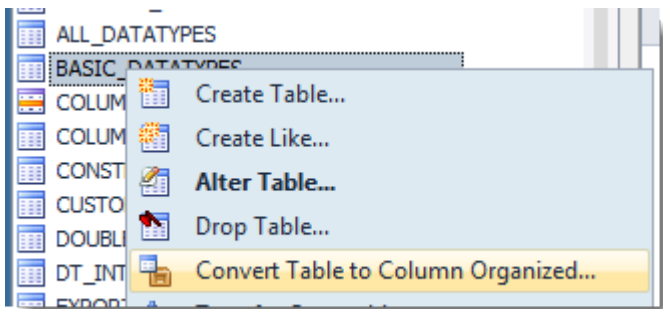
Audit Policy

- Objects that are associated with Audit Policies are now displayed on the Audit Policy's **Dependencies** tab in **Object Details Editor**
- You can now right-click an Audit Policy and associate objects to Audit Policies
- **Database Map** now supports Audit Policies



Object Explorer Enhancements

- You now can easily convert a row organized table to a column organized table
- Right-click and select **Convert Table to Column Organized**



z/OS Specific Features

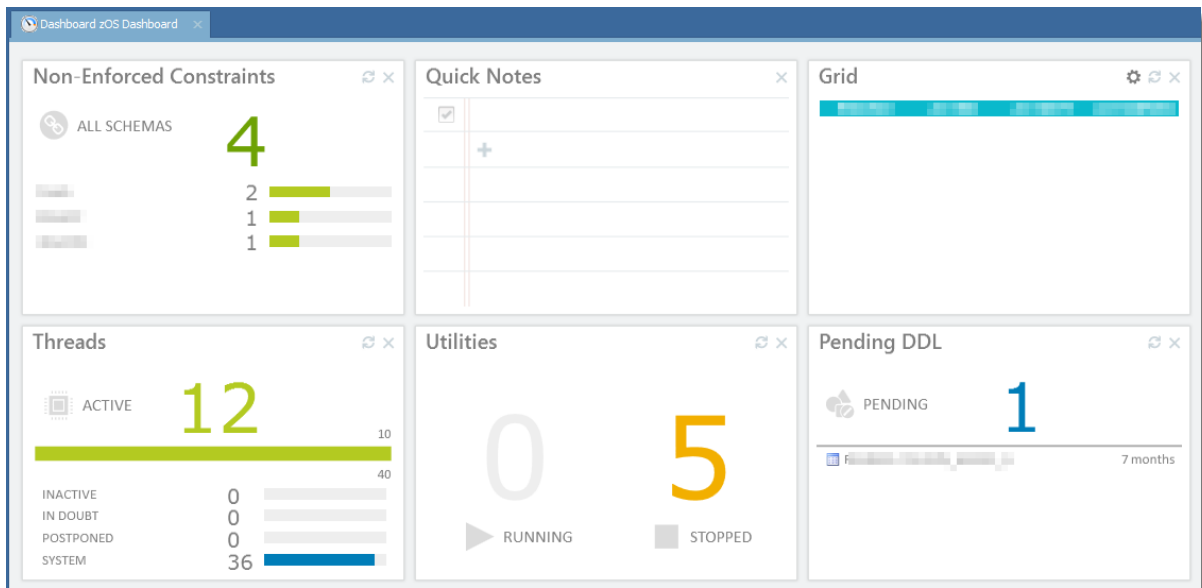
Support for IBM DB2 z/OS 12

Toad for IBM DB2 now supports connection to and various features of the latest IBM DB2 11:

- Utility execution via new DSNTUILV procedure
- New syntax for CREATE/ALTER TABLE
- New syntax for CREATE/ALTER TABLESPACE
- New TRANSFER OWNERSHIP support
- Support the ability to define a global variable based on array type
- Support for new definitions of explain and dynamic statement cache tables
- Bind package Editor now supports Application compatibility (APPLCOMPAT)

New Dashboard for IBM DB2 z/OS

- The DBA Dashboard is now available both for LUW and for z/OS IBM DB2 connections



- The following widgets are available:

Widget	Description
Simple Select	Write a simple SQL query and display its results in a simple widget. Customize its visualization mode and select from several diagram styles.
Quick Notes	Use this widget to create simple to-do lists and take quick notes.
Utilities	Displays a number of running and stopped DB2 z/OS utilities.
Threads	Displays a number of active, inactive, in doubt, postponed, and system threads and related progress bars.
Non-Enforced Constraints	Displays numbers of non-enforced constraints for all schemas in total and for each schema individually. You can easily modify these constraints from the list.
Pending	Displays information about which objects have pending definition changes.

See [Resolved Issues](#) for more enhancements and resolved issues in this release of Toad® for IBM® DB2®.

Learn More

Get the latest product information, find helpful resources, and join a discussion with the Toad® for IBM® DB2® team and other community members. Join the Toad® for IBM® DB2® community at <http://www.toadworld.com/products/toad-for-db2>.

System Requirements

Client Requirements

Before installing Toad, ensure that your client system meets the following minimum hardware and software requirements:

Requirement	Details
Platform	2 GHz processor (recommended minimum)

Requirement	Details
Memory	4 GB of RAM minimum, 16 GB recommended Note: The memory required may vary based on the following: <ul style="list-style-type: none"> • Applications that are running on your system when using Toad • Size and complexity of the database • Amount of database activity • Number of concurrent users accessing the database
Hard Disk Space	162MB to run Toad Note: The disk space required may vary based on the edition of Toad selected for installation.
Operating System	Windows Vista® Service Pack 2 (32-bit or 64-bit) Windows Server® 2008 Service Pack 2 (32-bit or 64-bit) Windows Server® 2008 R2 Service Pack 1 (64-bit) Windows Server® 2012 Windows Server® 2012 R2 Windows Server® 2016 Windows® 7 (32-bit or 64-bit) Windows® 8 (32-bit or 64-bit) Windows® 8.1 (32-bit or 64-bit) Windows® 10
.NET Framework	Microsoft® .NET Framework 4.5.1
Database Client	When connecting to a DB2 database/subsystem, ensure that you have a DB2 Client or IBM Data Server Driver installed. Toad supports DB2 Client versions 9.7.6 through 11.1. Toad has been tested with the following versions of the DB2 Client: 9.7.6, 9.7.9 , 10.1.0, 10.1.2, 10.1.3, 10.5.0, 10.5.2, 10.5.3, and 11.1.0.
Additional Requirements	Web Browser Microsoft® Internet Explorer® 7.0 or later Screen Toad supports screen resolutions up to 3200 x 1800 and display DPI settings up to 150%

Server Requirements

Before installing Toad, ensure that your server meets the following minimum hardware and software requirements:

Requirement	Details						
Database Server	IBM DB2 for LUW 9.5, 9.7, 10.1, 10.5, 10.5.0.5, 11.1 IBM DB2 for z/OS 9, 10, 11, 12 Note: Toad may support IBM DB2 Express and SWE in addition to listed above servers, but note that no testing was performed on it. Note: Windows 8, 10 and Windows Server 2012 require the following Fix Pack in order to ensure registration of DLLs in Global Assembly Cache: <table border="1" data-bbox="454 1848 853 1971"> <tbody> <tr> <td>IBM DB2 LUW 10.5</td> <td>Fix Pack 4</td> </tr> <tr> <td>IBM DB2 LUW 10.1</td> <td>Fix Pack 4</td> </tr> <tr> <td>IBM DB2 LUW 9.7</td> <td>Fix Pack 10</td> </tr> </tbody> </table>	IBM DB2 LUW 10.5	Fix Pack 4	IBM DB2 LUW 10.1	Fix Pack 4	IBM DB2 LUW 9.7	Fix Pack 10
IBM DB2 LUW 10.5	Fix Pack 4						
IBM DB2 LUW 10.1	Fix Pack 4						
IBM DB2 LUW 9.7	Fix Pack 10						

Virtualization Support

Application Virtualization Limited testing has been performed for Citrix® XenApp™ 5.0 on Windows Server 2003 and Citrix XenApp 6.5 on Windows Server 2008 R2.
Limited testing has been performed for Citrix support on Windows Server 2003 Enterprise Server (Service Pack 2) using the MetaFrame Presentation Server 5.0 and Citrix Presentation Server Clients 10.2.

Desktop Virtualization (VDI) Toad has been tested with vWorkspace™ 7.6 running on Windows Server 2008 R2 64-bit.

Note: Toad may work in virtualization environments other than the ones in which it was tested.

User Requirements

User Requirements to Install Toad

Only Windows Administrators and Power Users can install Toad.

Note: The following exceptions exist for Power Users:

- A Power User cannot install Toad on a computer running Windows Vista Enterprise. This is a Windows limitation because Vista does not support Power User mode.
- A Power User can install Toad for IBM DB2 as long as this user belongs to the DB2ADMNS or DBUSERS group.

If an Administrator installs Toad, the Administrator can share the Toad shortcut icon on the desktop and menu items with any user—a Power User, Restricted User, Vista standard user—on the computer.

If a Power User installs Toad, a Restricted User cannot do the following:

- Associate file extensions.
- View the Toad shortcut icon on the desktop or the Toad menu options in the Windows Start menu. As a workaround, Restricted Users can create a shortcut to Toad from the install directory and place the shortcut on their desktop.

User Requirements and Restrictions for Running Toad

The following describes the requirements and restrictions for users who launch and run Toad:

- A Windows Power User or Restricted User must belong to the DB2ADMNS or DB2USERS group. To add the user to one of these groups, select **Start | Control Panel | Administrative Tools | Computer Management | System Tools | Local Users and Groups | Groups | DB2ADMNS or DB2USERS**.
- A Windows Vista user must be either an administrator or a standard user that belongs to Vista Administrators group. Additionally, to enable full functionality in Toad for IBM DB2 when Vista's User Access Control security feature is turned on, the standard user must run Toad for IBM DB2 as an administrator. (Right-click the Toad for IBM DB2 icon on the Vista desktop and select **Run as administrator**.)
- A Windows Power User or Restricted User does not have the authority to add or remove DB2 catalog entries using the Toad for IBM DB2 Client Configuration wizard. However, these users can use the Import Profile function in the Toad for IBM DB2 Client Configuration wizard to import catalog entries to Toad for IBM DB2.
- To take full advantage of Toad for DB2 LUW functionality, the user ID specified in the Toad connection profile for each DB2 for LUW database connection requires the authorizations listed in the following document:
[Toad IBM DB2 LUW Authorizations Spreadsheet](#)
- As a minimum requirement to manage a DB2 for z/OS subsystem in Toad for IBM DB2, the user ID defined in the Toad for IBM DB2 connection profile for the subsystem must either have SYSADM privileges or SELECT privileges on the DB2 catalog tables. For a complete list of authorizations (and corresponding GRANT statements) a user requires to take full advantage of Toad for DB2 z/OS

functionality, refer to the following document:

[Toad IBM DB2 z/OS Authorizations Document](#)

- To create or modify the QuestSoftware.ToadSecurity table to enable Toad Security, the user who maintains this table must have privileges to create, insert, update, and delete it. All other users need only the ability to read the QuestSoftware.ToadSecurity table to use Toad Security features.
- For information about defining a RACF, Unix, or Linux group as a Toad Security role, see the *About Setting Up Toad Security* topic in the Toad online help. This topic explains how to add the Toad Security icons to your toolbar and how to define Toad Security roles that apply to your current connection. (The ability to define RACF, Unix, and Linux groups as Toad Security roles works with DB2 for LUW 9 or later databases and DB2 for z/OS 8 or later subsystems.)

Resolved Issues and Enhancements

The following is a list of issues addressed and enhancements implemented in this release of Toad® for IBM® DB2®.

Feature	Resolved Issue	Defect ID
General	Wrong syntax for partitioned tables after extended alter	TDB-3132/3703134-1
	Object reference not set in Options when searching for item and then changing it	TDB-3038/3595325-1
Compare Object	OC throws DB2 error for DB2 v9.1 - caused by NVL function in QueriesLUW.xml	TDB-2436/2838693-1
Database Explorer	LUW DB CFG parameters not in XML file	TDB-2977/3511886-1
	DB2 LUW multi-node - Node information displays same info for all nodes in one view	TDB-2731
Debugger	Database Status Screen displays "Status unknown"	TDB-2730/3251099-1
Documentation	Added info for required IBM DB2 Fix Packs for certain Windows versions	TDB-3114/3661426-1
Extract DDL	Cannot run object compare on all schemas	TDB-3119/3686310-1
	The DDL extract for a trigger is not showing the SQL code associated with it	TDB-3138/3722790-1
Object Details	LUW Database - Diagnostic log feature does not support UNICODE=YES	TDB-2826
Script Generation	Triggers are not recreated/revalidated when their table is extended altered	TDB-2803
Space Management	Capacity button on main tool bar should be disabled for DB2 LUW version less than 10	TDB-2739/3244910-1
SQL Editor	Stored Procedure INOUT Parameter causing error when run from Editor	TDB-2564/3081769-1
	You now can hold alt + left-click and drag to select vertically in Editor	TDB-2343
Object Details (DOV)	Display Column Position in Object details	TDB-2537/3171353-1
	Properties, Showing timestamps without AM or PM designation	TDB-2536/3164101-1

Known Issues

The following is a list of issues known to exist at the time of this release.

Feature	Description	Support Case/Defect ID
Object Details	When a DB2 object is created, DB2 implicitly creates authority for the user who created that object. In the system catalog tables those are shown as SYSIBM as the Grantor. When migration\compare\extended alter scripts are generated Toad does not generate GRANT statements in those scripts for authorizations granted by SYSIBM because those are granted implicit authorizations that have been created by DB2.	TDB-870
Debugger	<p>You might encounter issues with initializing Unified Debugger sessions if the version of the DB2 for LUW server on which you are debugging is earlier than 10.1 fix pack 2.</p> <p>Workaround: If the DB2 server version is earlier than DB2 for LUW 10.1 fix pack 2, copy DB2DBGM.JAR from the Toad client installation to the following location on the server:</p> <ul style="list-style-type: none"> DB2 instance home path\SQLLIB\JAR (Unix or AIX computer) DB2 instance home path\SQLLIB\JAR (Windows computer) <p>Notes: If the DB2 server version is DB2 for 10.1 fix pack 2, use the JAR file supplied with your DB2 version. If replacing the JAR file as described in the workaround, make sure you back up the original JAR file on the server before replacing it with the one from the Toad client installation.</p>	N/A
Export Wizard/ One Click Export	Avoid using Excel for exporting if your data has numeric values that require a high precision because Excel's precision is limited to 15 digits. If you export numbers with more precision, the values are rounded. If you export boundary numbers (max, min), rounded numbers will exceed the data type limit.	N/A
Installation	<p>Network and LAN installations are currently not supported.</p> <p>Toad uses hardcoded values instead of some variables such as %USERNAME% in several path names and therefore App-V environment is not supported. For installation adhere to Windows Installer Best Practices, see here.</p>	TDB-1009/2297051-1
Space Management	If running Toad® for IBM® DB2® 6.0 or earlier in a pureScale environment and the QUEST.SH_	N/A

SNAPSHOT procedure had been installed, the procedure will have to be redefined. Please, follow these steps:

1. Drop procedure QUEST.SH_SNAPSHOT
2. Right click a tablespace
3. Select **Space Management | View Space History**
4. Click **Yes** when prompted to run the install script for the procedure
5. Execute the script

SQL Editor	Toad does not handle DBMS_OUTPUT in the SQL Editor.	ST90710
z/OS Utilities	When using Utilities as the data preservation method and the length of a column tied to columns from other tables via RI is reduced. When executing the alter script the load fails with a DSNU334I INPUT FIELD INVALID error pointing to the altered column. The load cards show the old length for the altered column which appears to be the problem.	ST44753

Third Party Known Issues

The following is a list of third party issues known to exist at the time of release of Toad® for IBM® DB2® 6.3.

Feature	Description	Support Case/Defect ID
DB2 Client	In case Toad and a 9.5, 9.7 or 10.1 DB2 client is installed on Windows 8 or Windows Server 2012 IBM setup recommendation #1618434 has to be applied.	N/A
Data Server Driver	Installer of Data Server Driver 10.5.4 and newer may need to be run with Administrator permissions.	TDB-2306
LUW Procedure Script Tab	After installing DB2 LUW v10.1.3, the script tab for LUW procedures is empty. This is due to an issue introduced by IBM in fixpack 3 regarding the NULLIF SQL function. IBM APAR IC96725 addresses this issue.	TDB-180/2303729-1
DB2 z/OS invalid Timestamp values returned	When the IBM DB2 Analytics Accelerator is used in conjunction with DB2 z/OS, along with an IBM DB2 .Net Data Provider v10.1.3, timestamp values returned from queries are invalid. Since Toad DB2 v5.6 uses the IBM DB2 v10.1.3 .Net Data provider, invalid timestamp values can be returned within Toad 5.6. IBM PMR 8862756 has been opened on this topic. Please consult that PMR for a work-around.	N/A
LUW Procedure Debugging	When the user is running DB2 Server 10.1.3 with a database that has been migrated from a previous release, the debugger will fail with a reference to SYSDEBUGPRIVATE. This occurs from an IBM bug in the db2upd10 update utility. IBM APAR IC96837 addresses this issue. This has	TDB-708/2425004-1

been resolved in IBM DB2 10.1 FixPack 4.

Debugger	<p>The Debugger may not advance to the next line under certain circumstances. Those circumstances include DECLARE statements with multiple variables defined on a single line and IF statements with multiple conditions defined on a single line.</p> <p>Workaround:</p> <p>In procedures that are to be debugged: The procedure text should be modified to separate DECLARE variables onto different lines and IF statements separated to have conditions on separate lines.</p>	ST70691
	<p>LUW: The following error message is displayed when you attempt to modify a watch value during a Debug session on a DB2 for LUW 9 database: "ERROR [57011] [IBM][DB2/NT] SQL0954C Not enough storage is available in the application heap to process the statement. SQLSTATE=57011" The call to modify the watch value fails on DB2, and the server runs out of heap memory.</p> <p>Workaround: To avoid the heap memory issue, increase the application heap size on the server.</p>	CR188846
Export Wizard/ One Click Export	<p>To export to an Office 2003 or 2007 Excel instance, the Office Primary Interop Assemblies (PIAs) must be installed. You can install the PIAs from one of the following locations:</p> <ul style="list-style-type: none">• 2003 PIAs: http://www.microsoft.com/en-us/download/details.aspx?id=20923• 2007 PIAs: http://www.microsoft.com/en-us/download/details.aspx?id=18346	N/A
	<p>Date formatting issues occur when exporting table data to an Excel file or instance. These issues seem to occur especially when exporting dates previous to 1900.</p> <p>Workaround: For better results, try exporting the data to a CSV file.</p>	ST70817
Object Editor (DOE)	<p>z/OS: Executing a procedure causes "Invalid SQL syntax" message when parameter listing has a new line character separating parameters. IBM has opened PMR 80539,756 to investigate this issue.</p> <p>Workaround: Remove the new line character and separate the parameters by the spaces.</p>	ST87770

Getting Started

Contents of the Release Package

The Toad release package contains the following products:

1. Toad® for IBM® DB2® 6.3
2. Product Documentation, including:
 - Installation Guide
 - Online Help

- [Release Notes](#)

Installation Instructions

See the [Toad® for IBM® DB2® Installation Guide](#) for more information.

Toad for IBM DB2 Editions

Each Toad for IBM DB2 is packaged with additional Quest products to expand your IBM DB2 experience. The following products may be part of your Toad for IBM DB2 Edition:

[Toad for IBM DB2 6.3](#)

[Benchmark Factory 8.0](#)

[SQL Optimizer for IBM DB2 LUW 4.3.1](#)

[SQL Optimizer for IBM DB2 z/OS 5.5.1](#)

[Spotlight on IBM DB2 for LUW 6.9.3](#)

[Toad Data Modeler 6.2](#)

The following Toad® for IBM® DB2® Editions are available:

Linux, Unix, and Windows (LUW) Editions

Edition	Licensed
Toad® for IBM® DB2® Base Edition	Toad® for IBM® DB2® Base
Toad® for IBM® DB2® Professional Edition	Toad® for IBM® DB2® Professional
Toad® for IBM® DB2® Xpert Edition	Toad® for IBM® DB2® Professional SQL Optimizer for IBM® DB2® LUW
Toad® for IBM® DB2® Developer Edition	Toad® for IBM® DB2® Professional SQL Optimizer for IBM® DB2® LUW Benchmark Factory™—IBM DB2 Edition
Toad® for IBM® DB2® DBA Edition	Toad® for IBM® DB2® Professional SQL Optimizer for IBM® DB2® LUW Benchmark Factory™—IBM DB2 Edition Spotlight™ on IBM® DB2® LUW Toad™ Data Modeler
Toad™ DB Admin Module	Toad™ DB Admin Module*

IBM DB2 z/OS Editions

Edition	Licensed
Toad® for IBM® DB2® Base Edition	Toad® for IBM® DB2® Base
Toad® for IBM® DB2® Professional Edition	Toad® for IBM® DB2® Professional
Toad® for IBM® DB2® Xpert Edition	Toad® for IBM® DB2® Professional SQL Optimizer for IBM® DB2® z/OS
Toad® for IBM® DB2® Developer Edition	Toad® for IBM® DB2® Professional SQL Optimizer for IBM® DB2® z/OS

i NOTE: The DB Admin Module Add-on can be added to any edition of Toad.

i IMPORTANT: Your license key determines the edition and will enable Toad for IBM DB2 functionality accordingly. In many cases, if functionality is disabled within Toad, you may not have an appropriate license to use it. When Toad is running, you can see which components are licensed by selecting **Help | About**.

Product Licensing

To activate a trial license

1. In the Licensing dialog, enter your license (Authorization) key.
2. Enter the site message included with the license key.

To activate a purchased commercial license

1. In the Licensing dialog, enter your license (Authorization) key.
2. Enter the site message included with the license key.

Globalization

This section contains information about installing and operating this product in non-English configurations, such as those needed by customers outside of North America. This section does not replace the materials about supported platforms and configurations found elsewhere in the product documentation.

This release is Unicode-enabled and supports any character set. It supports simultaneous operation with multilingual data. This release is targeted to support operations in the following regions: North America, Western Europe and Latin America, Central and Eastern Europe, Far-East Asia, Japan.

This release has the following known capabilities or limitations: ** During the Toad for IBM DB2 installation process, if the user overrides the default installation path, the new path specification cannot contain Unicode characters. This limitation exists because Toad installs an IBM DB2 for LUW client in the specified Toad installation path, and IBM DB2 installations do not support Unicode characters.

** (This limitation applies ONLY to the Xpert edition of Toad for IBM DB2 for z/OS and to the DBA edition of Toad for IBM DB2 for LUW) Dell SQL Optimizer for IBM DB2 z/OS and Toad Remote Script Execution (for IBM DB2 LUW or z/OS) support single-byte character sets only. These features do not support double-byte or multi-byte character sets. All IBM DB2 client and server installations should be configured to use the same or compatible character encodings and the same locale and regional options.

For More Information

Get the latest product information, find helpful resources, and join a discussion with the Toad® for IBM® DB2® team and other community members. Join the Toad® for IBM® DB2® community at <http://www.toadworld.com/products/toad-for-db2>.

About Quest

We are more than just a name

We are on a quest to make your information technology work harder for you. That is why we build community-driven software solutions that help you spend less time on IT administration and more time on business innovation. We help you modernize your data center, get you to the cloud quicker and provide the expertise,

security and accessibility you need to grow your data-driven business. Combined with Quest's invitation to the global community to be a part of its innovation, and our firm commitment to ensuring customer satisfaction, we continue to deliver solutions that have a real impact on our customers today and leave a legacy we are proud of. We are challenging the status quo by transforming into a new software company. And as your partner, we work tirelessly to make sure your information technology is designed for you and by you. This is our mission, and we are in this together. Welcome to a new Quest. You are invited to Join the Innovation.

Our brand, our vision. Together.

Our logo reflects our story: innovation, community and support. An important part of this story begins with the letter Q. It is a perfect circle, representing our commitment to technological precision and strength. The space in the Q itself symbolizes our need to add the missing piece — you — to the community, to the new Quest.

For sales or other inquiries, visit www.quest.com/company/contact-us.aspx or call +1 949 754-8000.

Technical Support Resources

Technical support is available to Quest customers with a valid maintenance contract and customers who have trial versions. You can access the Quest Support Portal at <https://support.quest.com>.

The Support Portal provides self-help tools you can use to solve problems quickly and independently, 24 hours a day, 365 days a year. The Support Portal enables you to:

- Submit and manage a Service Request
- View Knowledge Base articles
- Sign up for product notifications
- Download software and technical documentation
- View how-to-videos
- Engage in community discussions
- Chat with support engineers online
- View services to assist you with your product

Copyright

© 2017 Quest Software Inc.
ALL RIGHTS RESERVED.

This guide contains proprietary information protected by copyright. The software described in this guide is furnished under a software license or nondisclosure agreement. This software may be used or copied only in accordance with the terms of the applicable agreement. No part of this guide may be reproduced or transmitted in any form or by any means, electronic or mechanical, including photocopying and recording for any purpose other than the purchaser's personal use without the written permission of Quest Software Inc.

The information in this document is provided in connection with Quest Software products. No license, express or implied, by estoppel or otherwise, to any intellectual property right is granted by this document or in connection with the sale of Quest Software products. EXCEPT AS SET FORTH IN THE TERMS AND CONDITIONS AS SPECIFIED IN THE LICENSE AGREEMENT FOR THIS PRODUCT, QUEST SOFTWARE ASSUMES NO LIABILITY WHATSOEVER AND DISCLAIMS ANY EXPRESS, IMPLIED OR STATUTORY WARRANTY RELATING TO ITS PRODUCTS INCLUDING, BUT NOT LIMITED TO, THE IMPLIED WARRANTY OF MERCHANTABILITY, FITNESS FOR A PARTICULAR PURPOSE, OR NON-INFRINGEMENT. IN NO EVENT SHALL QUEST SOFTWARE BE LIABLE FOR ANY DIRECT, INDIRECT, CONSEQUENTIAL, PUNITIVE, SPECIAL OR INCIDENTAL DAMAGES (INCLUDING, WITHOUT LIMITATION, DAMAGES FOR LOSS OF PROFITS, BUSINESS INTERRUPTION OR LOSS OF INFORMATION) ARISING OUT OF THE USE OR INABILITY TO USE THIS DOCUMENT, EVEN IF QUEST SOFTWARE HAS BEEN ADVISED OF THE POSSIBILITY OF SUCH DAMAGES. Quest Software makes no representations or warranties with respect to the accuracy or completeness of the contents of this document and reserves the right to make changes to specifications and product descriptions at any time without notice. Quest Software does not make any commitment to update the information contained in this document.

If you have any questions regarding your potential use of this material, contact:

Quest Software Inc.
Attn: LEGAL Dept
4 Polaris Way
Aliso Viejo, CA 92656

Refer to our web site (www.quest.com) for regional and international office information.

Patents

Quest Software is proud of our advanced technology. Patents and pending patents may apply to this product. For the most current information about applicable patents for this product, please visit our website at www.quest.com/legal.

Trademarks

Quest, Quest Software, Benchmark Factory, Spotlight, SQL Navigator, vWorkspace, Toad, and the Quest logo are trademarks of Quest Software Inc. in the U.S.A. and other countries. For a complete list of Quest Software trademarks, please visit our website at www.quest.com/legal. Microsoft, Windows, Windows Server, Windows Vista, Visual Studio, SharePoint, Access and Excel are either registered trademarks or trademarks of Microsoft Corporation in the United States and/or other countries. Oracle is a trademark or registered trademark of Oracle and/or its affiliates in the United States and other countries. Citrix® and XenApp™ are trademarks of Citrix Systems, Inc. and/or one or more of its subsidiaries, and may be registered in the United States Patent and Trademark Office and in other countries. IBM and DB2 are registered trademarks of International Business Machines Corporation. Subversion is a trademark of the Apache Software Foundation. All other trademarks, servicemarks, registered trademarks, and registered servicemarks are property of their respective owners.