

Quest® Migration Manager for Exchange 8.14

## **Resource Kit User Guide**



**© 2019 Quest Software Inc. ALL RIGHTS RESERVED.**

This guide contains proprietary information protected by copyright. The software described in this guide is furnished under a software license or nondisclosure agreement. This software may be used or copied only in accordance with the terms of the applicable agreement. No part of this guide may be reproduced or transmitted in any form or by any means, electronic or mechanical, including photocopying and recording for any purpose other than the purchaser's personal use without the written permission of Quest Software Inc.

The information in this document is provided in connection with Quest Software products. No license, express or implied, by estoppel or otherwise, to any intellectual property right is granted by this document or in connection with the sale of Quest Software products. EXCEPT AS SET FORTH IN THE TERMS AND CONDITIONS AS SPECIFIED IN THE LICENSE AGREEMENT FOR THIS PRODUCT, QUEST SOFTWARE ASSUMES NO LIABILITY WHATSOEVER AND DISCLAIMS ANY EXPRESS, IMPLIED OR STATUTORY WARRANTY RELATING TO ITS PRODUCTS INCLUDING, BUT NOT LIMITED TO, THE IMPLIED WARRANTY OF MERCHANTABILITY, FITNESS FOR A PARTICULAR PURPOSE, OR NON-INFRINGEMENT. IN NO EVENT SHALL QUEST SOFTWARE BE LIABLE FOR ANY DIRECT, INDIRECT, CONSEQUENTIAL, PUNITIVE, SPECIAL OR INCIDENTAL DAMAGES (INCLUDING, WITHOUT LIMITATION, DAMAGES FOR LOSS OF PROFITS, BUSINESS INTERRUPTION OR LOSS OF INFORMATION) ARISING OUT OF THE USE OR INABILITY TO USE THIS DOCUMENT, EVEN IF QUEST SOFTWARE HAS BEEN ADVISED OF THE POSSIBILITY OF SUCH DAMAGES. Quest Software makes no representations or warranties with respect to the accuracy or completeness of the contents of this document and reserves the right to make changes to specifications and product descriptions at any time without notice. Quest Software does not make any commitment to update the information contained in this document.

If you have any questions regarding your potential use of this material, contact:

Quest Software Inc.

Attn: LEGAL Dept

4 Polaris Way

Aliso Viejo, CA 92656

Refer to our Web site (<https://www.quest.com>) for regional and international office information.

**Patents**


Quest Software is proud of our advanced technology. Patents and pending patents may apply to this product. For the most current information about applicable patents for this product, please visit our website at <https://www.quest.com/legal>.

**Trademarks**

Quest, the Quest logo, and Join the Innovation are trademarks and registered trademarks of Quest Software Inc. For a complete list of Quest marks, visit <https://www.quest.com/legal/trademark-information.aspx>. All other trademarks and registered trademarks are property of their respective owners.

**Legend**

 **CAUTION: A CAUTION icon indicates potential damage to hardware or loss of data if instructions are not followed.**

 **IMPORTANT, NOTE, TIP, MOBILE, or VIDEO:** An information icon indicates supporting information.

Migration Manager for Exchange Resource Kit User Guide

Updated - April 2017

Version - 8.14

# Contents

<b>Introduction</b> .....	<b>1</b>
About Service File Viewer .....	1
Related Components .....	1
Installing the Migration Manager for Exchange Resource Kit .....	1
<b>Service File Viewer</b> .....	<b>3</b>
Using Service File Viewer .....	3
Starting the Service File Viewer .....	3
Adding an Agent Host .....	4
Service File Viewer Interface .....	4
Stopping or Starting Transmission Agents .....	6
Restoring Files from the Archive .....	6
Viewing Service File Properties .....	6
Service File Information .....	7
Information Used by the Target Agents .....	8
Additional Service File Viewer Features .....	8
<b>About us</b> .....	<b>9</b>
Technical support resources .....	9

# Introduction

The Migration Manager for Exchange Resource Kit contains Service File Viewer — utility that is helpful during Exchange migration.

For more details, see the following topics:

- [About Service File Viewer](#)
- [Related Components](#)
- [Installing the Migration Manager for Exchange Resource Kit](#)

## About Service File Viewer

The Service File Viewer helps you get information about the service files created by the agents. The utility is used for troubleshooting when PRV or PUB service files are lost due to network or server problems.

## Related Components

The following utilities are no longer a part of the Migration Manager for Exchange Resource Kit but are also helpful during migration:

**Active Directory Cleanup Utility (ADCleanup)**—This utility cleans up the auxiliary attributes used by the Directory Synchronization Agent (DSA) and additional SMTP proxy addresses that were used for mail redirection. This utility is a part of the Migration Manager for Active Directory Resource Kit. The setup is available from the Migration Manager installation CD and from the download page at <https://www.quest.com/register/54785>.

**Client Profile Updating Utility (EMWProf) and EMWProf Configuration Wizard**—The EMWProf utility and its configuration wizard are now provided in a separate setup of their own. The setup is available from the Migration Manager installation CD and from the download page at <https://www.quest.com/register/54786>.

## Installing the Migration Manager for Exchange Resource Kit

The Migration Manager for Exchange Resource Kit should be installed separately after Migration Manager for Exchange is installed.

By default the Resource Kit is installed to the **%ProgramFiles(x86)%\Quest Software\Migration Manager\Exchange Data\Resource Kit** folder.

# Service File Viewer

The Service File Viewer helps you get information about the service files created by the agents. If any PRV or PUB service files are lost due to network or server problems, an administrator can use this utility to determine a PRV or PUB file's destination in order to locate the file manually.

PRV files are used for mailbox synchronization; PUB files are used for public folder synchronization. The PRV and PUB files contain the service information and the mailbox or public folder data (compressed PST files). For more information about PST files and their use, please see the Mailbox Synchronization and Public Folder Synchronization sections of the Migration Manager for Exchange User Guide.

The Service File Viewer also helps you start, stop, and restart the transmission agents; provides information on the transmission agents' services; and allows you to view the transmission agents' log files.

[Using Service File Viewer](#)

[Starting the Service File Viewer](#)

[Adding an Agent Host](#)

[Service File Viewer Interface](#)

[Additional Service File Viewer Features](#)

## Using Service File Viewer

- [Starting the Service File Viewer](#)
- [Adding an Agent Host](#)
- [Service File Viewer Interface](#)
- [Additional Service File Viewer Features](#)

## Starting the Service File Viewer

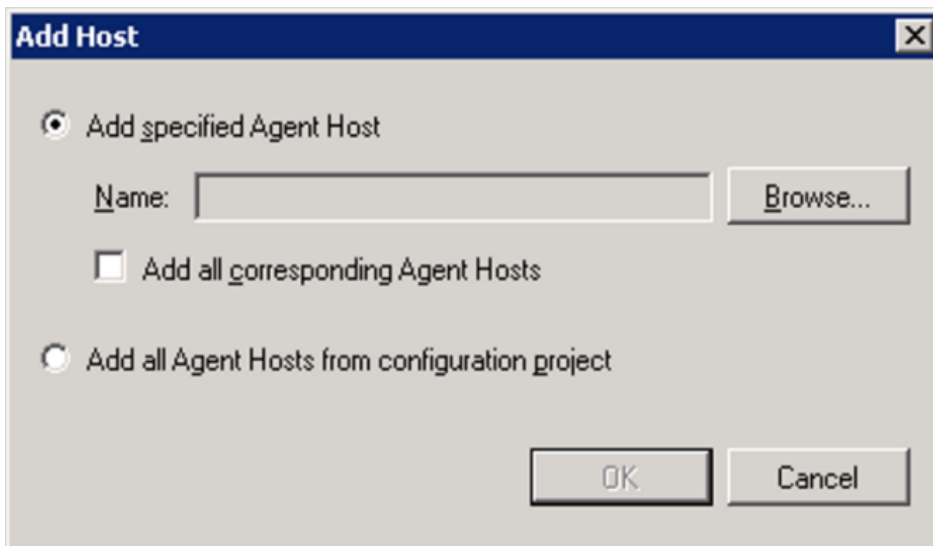
The Service File Viewer utility can be started from the **Start** menu or from the Migration Manager console. You can also start the utility by running the **ServiceFileViewer.exe** file installed in the **%ProgramFiles(x86)%\Quest Software\Migration Manager\Exchange Data\Resource Kit\Service File Viewer** folder by default.

The account used for launching the utility must be a member of the computer local Administrators group. The account used for launching the utility must be a member of the computer local **Administrators** group.

The account used for launching the utility must be a member of the computer local **Administrators** group.

# Adding an Agent Host

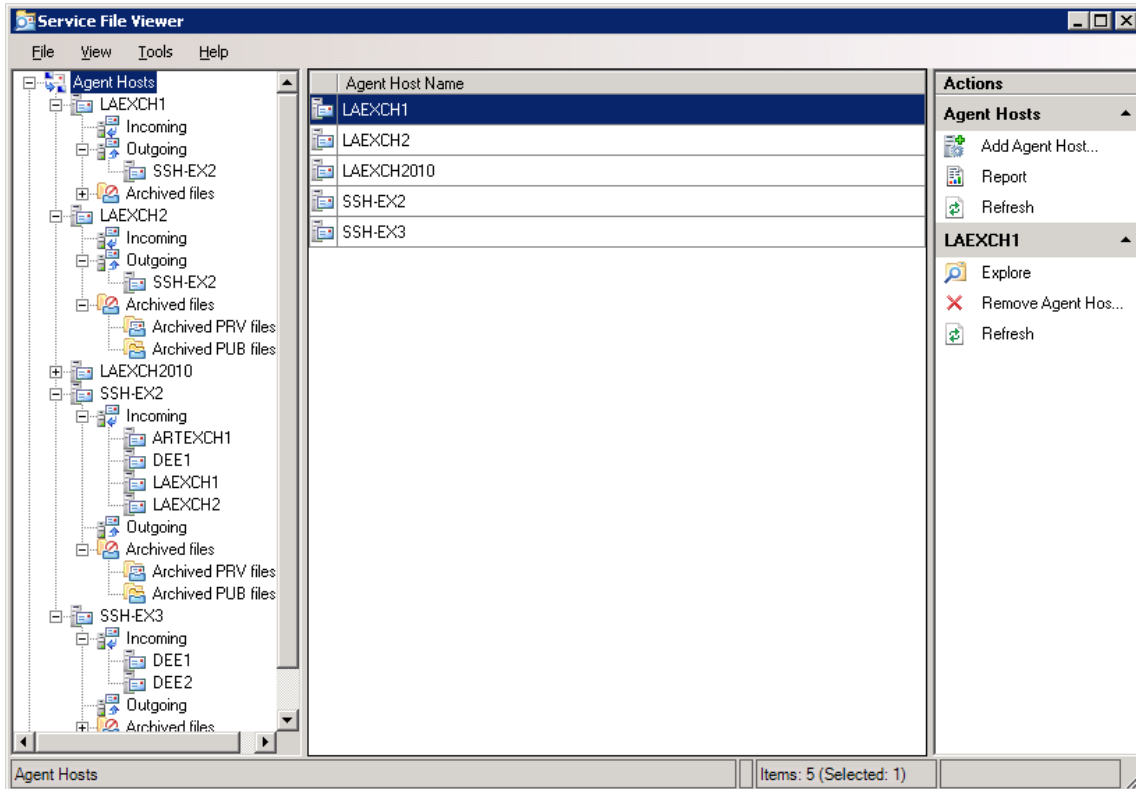
After the Service File Viewer is started, you need to add agent hosts that are involved in migration. To add an agent host, click **Add Agent Host** in the **Actions** pane.



You can add a particular agent host or all agent hosts from the configuration project. To add all agent hosts that are engaged in mailbox or public folder synchronization jobs, select the **Add all corresponding Agent Hosts** check box.

## Service File Viewer Interface

Service file information is organized in an interface similar to Windows Explorer, as shown below:



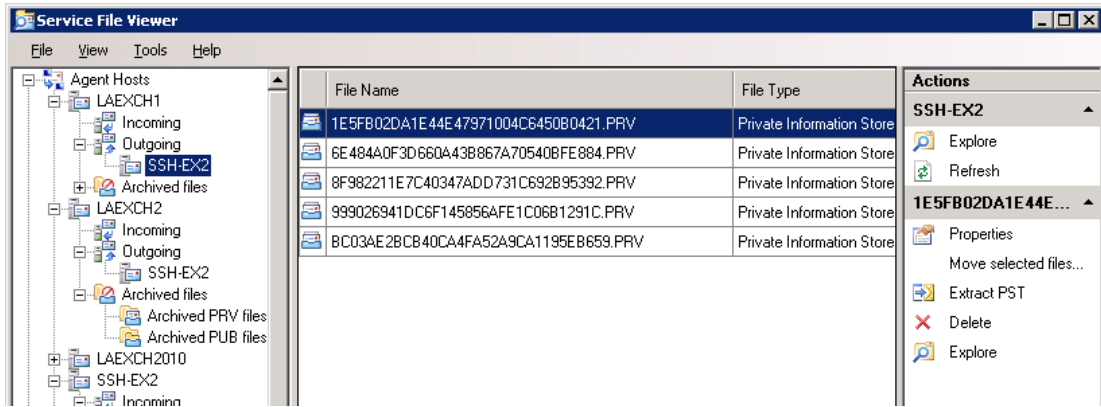
The left pane displays the **Agent Hosts** root node, a management tree for the agent hosts involved in the synchronization jobs and the **Transmission Agent Management** root node. When you click **Transmission Agent Management**, you can view information about the services of the transmission agents installed on the Agent hosts involved in migration.

Under each agent host node are **Incoming** and **Outgoing** folders. Each folder contains subfolders corresponding to agent hosts that take part in the same synchronization jobs as the node agent host. All service files that are created by the source agents on the agent host are located in the destination agent host's subfolder of the **Outgoing** folder. The incoming service files are put to the folders corresponding to their source agent hosts.

If the **Agent Hosts** root node is selected in the left pane, as illustrated above, the middle pane displays agent hosts that you have added. All actions that you can perform on agent hosts are shown in the **Actions** pane, for example, generate a report.

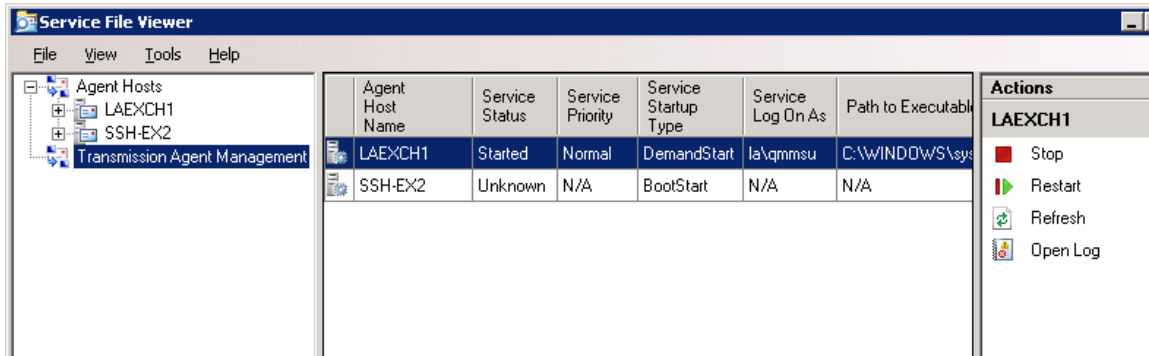
If an agent host is selected in the left pane, as shown below, the list of service files is represented as a table in the middle pane. The right pane displays possible actions on the service files.





## Stopping or Starting Transmission Agents

To start, stop, or restart the transmission agent on the agent host, or to view the agent's log file or refresh the agent's status, select the **Transmission Agent Management** node, then select agent host in the middle pane and select the appropriate command on the **Actions** pane.

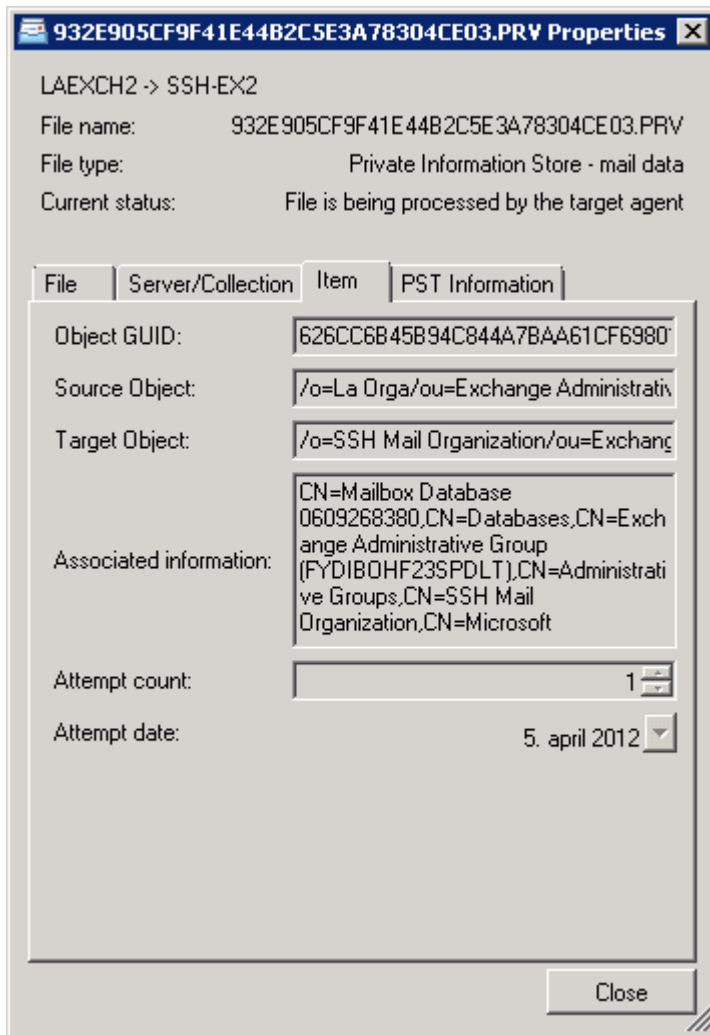


## Restoring Files from the Archive

To restore the service files archived by the Mail Target Agent or the Public Folder Target Agent, select the files to be restored and select the **Restore** command from the **Actions** pane. You should restore service files from the archive only after you have determined and rectified the reason why the agent could not process them.

## Viewing Service File Properties

To view the service file properties, select the file in the table and click **Properties** on the **Actions** pane. The following screen is displayed:



The window shows the service file information and the information that will be used by the target agents, as explained below.

## Service File Information

Each service file contains the following information:

- **File type** — Displays the PRV or PUB file type, which is one of the following:
  - Private Information Store — mail data — a PRV service file that contains a PST file
  - **Private Information Store — service information only** — a PRV service file that does not contain a PST file
  - **Public Information Store — mail data** — a PUB service file that contains a PST file
  - **Public Information Store — service information only** — a PUB service file that does not contain a PST file
- **Current status** — Displays the current status of the service file, which will be one of the following:

- Waiting in the Transmission Agent's queue
- Waiting in the target agent's queue
- File is being copied
- File is being processed by the target agent

## Information Used by the Target Agents

The following information is used by the Mail Target Agents and Public Folder Target Agents when they extract data from the PST container:

- **Source Object** — For PRV files, the box displays the distinguished name of the source mailbox. For PUB files, it displays the path to the source public folder.
- **Target Object** — For PRV files, the box displays the distinguished name of the target mailbox. For PUB files, it displays the path to the target public folder.
- **Associated information** — For PRV files, the box displays the full path to the target server mailbox store. For PUB files, the box displays the pair of public folders engaged in synchronization.

# Additional Service File Viewer Features

With Service File Viewer utility, you can also do the following:

- **Extract a PST files from a service file (PRV or PUB).** A PST file can be extracted from its container (PRV or PUB file) and viewed using Microsoft Outlook.

To extract a PST file, right-click the appropriate service file in the table, click **Extract PST**, and save the file. The PST file can be opened in Microsoft Outlook.

Note that the folder names in the PST files are stored in a hexadecimal format in order to support non-English characters. Therefore, when you open a PST file in Microsoft Outlook, folder names will be represented with hexadecimal values. However, after the synchronization is over, localized folder names will be displayed in their original language.

- **Delete service files.** Select service files that you want to delete and click **Delete** in **Actions** pane.
- **Display the folders that contain service files.** To open the folder containing service files in Windows Explorer, right-click the file, and click **Explore**. You can also browse through the files and folders on the agent hosts, by selecting **Explore** in the **Actions** pane.
- **Explore.** This option let you browse through the files and folders.
- **Move files to incoming agent host.** If you select some files under the **Outgoing** node and click **Move to incoming agent host** in the **Actions** pane, the utility moves these files to the corresponding target agent hosts.

**i** | **NOTE:** The Service File Viewer utility does not support Exchange Cluster Continuous Replication servers, if the Exchange CCR server is used as an agent host.

# About us

---

Quest provides software solutions for the rapidly-changing world of enterprise IT. We help simplify the challenges caused by data explosion, cloud expansion, hybrid datacenters, security threats, and regulatory requirements. We are a global provider to 130,000 companies across 100 countries, including 95% of the Fortune 500 and 90% of the Global 1000. Since 1987, we have built a portfolio of solutions that now includes database management, data protection, identity and access management, Microsoft platform management, and unified endpoint management. With Quest, organizations spend less time on IT administration and more time on business innovation. For more information, visit [www.quest.com](http://www.quest.com).

## Technical support resources

Technical support is available to Quest customers with a valid maintenance contract and customers who have trial versions. You can access the Quest Support Portal at <https://support.quest.com>.

The Support Portal provides self-help tools you can use to solve problems quickly and independently, 24 hours a day, 365 days a year. The Support Portal enables you to:

- Submit and manage a Service Request
- View Knowledge Base articles
- Sign up for product notifications
- Download software and technical documentation
- View how-to-videos
- Engage in community discussions
- Chat with support engineers online
- View services to assist you with your product