

LiteSpeed® for SQL Server 8.6

## Install Guide



## Copyright 2017 Quest Software Inc. ALL RIGHTS RESERVED.

This guide contains proprietary information protected by copyright. The software described in this guide is furnished under a software license or nondisclosure agreement. This software may be used or copied only in accordance with the terms of the applicable agreement. No part of this guide may be reproduced or transmitted in any form or by any means, electronic or mechanical, including photocopying and recording for any purpose other than the purchaser's personal use without the written permission of Quest Software Inc.

The information in this document is provided in connection with Quest Software products. No license, express or implied, by estoppel or otherwise, to any intellectual property right is granted by this document or in connection with the sale of Quest Software products. EXCEPT AS SET FORTH IN THE TERMS AND CONDITIONS AS SPECIFIED IN THE LICENSE AGREEMENT FOR THIS PRODUCT, QUEST SOFTWARE ASSUMES NO LIABILITY WHATSOEVER AND DISCLAIMS ANY EXPRESS, IMPLIED OR STATUTORY WARRANTY RELATING TO ITS PRODUCTS INCLUDING, BUT NOT LIMITED TO, THE IMPLIED WARRANTY OF MERCHANTABILITY, FITNESS FOR A PARTICULAR PURPOSE, OR NON-INFRINGEMENT. IN NO EVENT SHALL QUEST SOFTWARE BE LIABLE FOR ANY DIRECT, INDIRECT, CONSEQUENTIAL, PUNITIVE, SPECIAL OR INCIDENTAL DAMAGES (INCLUDING, WITHOUT LIMITATION, DAMAGES FOR LOSS OF PROFITS, BUSINESS INTERRUPTION OR LOSS OF INFORMATION) ARISING OUT OF THE USE OR INABILITY TO USE THIS DOCUMENT, EVEN IF QUEST SOFTWARE HAS BEEN ADVISED OF THE POSSIBILITY OF SUCH DAMAGES. Quest Software makes no representations or warranties with respect to the accuracy or completeness of the contents of this document and reserves the right to make changes to specifications and product descriptions at any time without notice. Quest Software does not make any commitment to update the information contained in this document.

If you have any questions regarding your potential use of this material, contact:

Quest Software Inc.

Attn: LEGAL Dept

4 Polaris Way

Aliso Viejo, CA 92656

Refer to our Web site ([www.quest.com](http://www.quest.com)) for regional and international office information.




### Patents

Quest Software is proud of our advanced technology. Patents and pending patents may apply to this product. For the most current information about applicable patents for this product, please visit our website at [www.quest.com/legal](http://www.quest.com/legal).

### Trademarks

Quest, Toad, Toad World, LiteSpeed and the Quest logo are trademarks and registered trademarks of Quest Software Inc. For a complete list of Quest marks, visit [www.quest.com/legal](http://www.quest.com/legal). All other trademarks and registered trademarks are property of their respective owners.

### Legend

-  **WARNING:** A WARNING icon indicates a potential for property damage, personal injury, or death.
-  **CAUTION:** A CAUTION icon indicates potential damage to hardware or loss of data if instructions are not followed.
-  **IMPORTANT, NOTE, TIP, MOBILE, or VIDEO:** An information icon indicates supporting information.

LiteSpeedInstall Guide

Updated - September 2017

Version - 8.6

# Contents

<b>Introduction</b> .....	<b>5</b>
About LiteSpeed .....	5
LiteSpeed Architecture .....	5
LiteSpeed UI Console .....	6
LiteSpeed Server Components .....	6
Local and Central Repositories .....	6
Multiple Central Repositories .....	7
<b>System Requirements</b> .....	<b>8</b>
Software Requirements .....	8
Supported Cluster Environments .....	9
Supported Storage Appliances .....	9
VMWare and Hyper-V Environments .....	9
Hardware Requirements .....	9
Privilege and Grant Requirements .....	10
<b>Installation Scenarios</b> .....	<b>12</b>
Install LiteSpeed .....	12
Upgrade LiteSpeed .....	12
Uninstall LiteSpeed .....	13
<b>Installation</b> .....	<b>14</b>
Install LiteSpeed Locally .....	14
Configure Server Instances .....	15
Upgrade Repositories .....	17
Install LiteSpeed on Remote Server Instances .....	17
Install LiteSpeed Silently .....	21
Command-Line Parameters .....	21
Examples .....	22
To run a silent install .....	22
To register LiteSpeed on all* instances during install .....	22
To run an install with logging enabled .....	23
To run install, but not Instance Configuration .....	23
To uninstall LiteSpeed .....	23
Cluster Installation .....	23
Local Cluster Installations .....	24
Remote Cluster Installations .....	24

Using LiteSpeed Remote Deploy Tool .....	24
Using SCCM or LANDesk .....	25
<b>License Registration .....</b>	<b>27</b>
<b>Configuration .....</b>	<b>28</b>
Register Central Repositories .....	28
Select a Central Repository .....	29
Register Server Instances .....	29
Create Server Groups .....	31
<b>About us .....</b>	<b>33</b>
<b>Third Party Contributions .....</b>	<b>34</b>

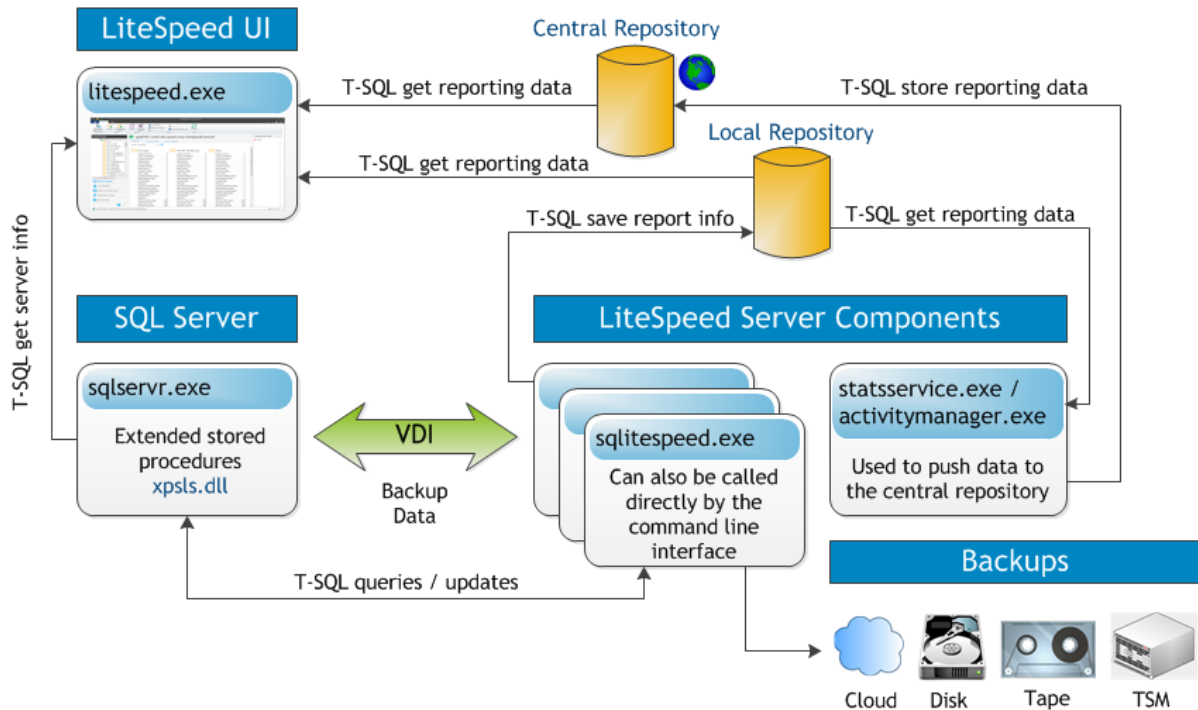
# Introduction

## About LiteSpeed

LiteSpeed® for SQL Server, or LiteSpeed, is a fast and flexible backup and recovery solution that allows database administrators to easily maintain complete control over the backup and recovery process. LiteSpeed's low-impact, high-performance compression and encryption technology helps reduce storage costs and protect data, while maintaining a high level of recoverability.

## LiteSpeed Architecture

The diagram below shows how the LiteSpeed components communicate to SQL Server to create a backup and how data gets into the local repository and then is pushed to the central repository.



## LiteSpeed UI Console

The LiteSpeed UI Console is a graphical user interface that maintains the accessibility of LiteSpeed functionality. You need to install at least one LiteSpeed UI Console on the computer from which you want to manage your SQL Servers and control backup and restore processes.

## LiteSpeed Server Components

The core of LiteSpeed includes the LiteSpeed extended stored procedures, compression and encryption engines and other components that provide command-line access to the product's functionality and support the LiteSpeed UI Console.

You need to install LiteSpeed core components on all server instances where you want to benefit from LiteSpeed's fast and flexible backup and recovery solutions.

**NOTE:** If you do not install LiteSpeed core components on the server instances, you can only conduct native SQL Server backups.

## Local and Central Repositories

LiteSpeed repositories collect and retain statistics on backup activity that occurs through LiteSpeed, including backups conducted from the LiteSpeed UI Console, command-line, or using the extended stored procedures. Repositories collect and present statistics for registered servers. They are not a list of servers. If a server goes

offline you can use the central repository to find out information about it, such as the last time LiteSpeed backed up the server.

LiteSpeed installs statistics databases through the Instance Configuration wizard. For more information, see [Configure Server Instances](#) on page 15. LiteSpeed installs a local repository for each server instance you select. Then, you create and select a central repository to gather the local repositories' statistics. LiteSpeed uses the LiteSpeed Activity Service to transfer the statistics from each local repository to the central repository, so that the central repository provides a complete picture of backups on all servers.

With the repositories, you can see backups that have failed or succeeded in the Backup Manager Overview tab. LiteSpeed displays the statistics for the server group, category, server, or database that you select in the navigation pane tree.

## Multiple Central Repositories

LiteSpeed allows you to have multiple central repositories. For example, you may want to have one set of server instances report to one central repository and another set to a second central repository. However, one local repository cannot report to two central repositories.

If you want to use multiple central repositories, register each central repository, and then select the appropriate central repository. For more information, see [Register Central Repositories](#) on page 28.

# System Requirements

Before beginning installation, review this section to ensure your system meets the following minimum hardware and software requirements.

## Software Requirements

Requirements	Details
Operating System	Microsoft Windows Server 2008 32-bit and 64-bit (x64) (All Service Packs)
	Microsoft Windows Server 2008 R2 64-bit (x64) (All Service Packs)
	Microsoft Windows Server 2012 64-bit (x64) (All Service Packs)
	Microsoft Windows Server 2012 R2 64-bit (x64) (All Service Packs)
	Microsoft Windows Server 2016 64-bit (x64) (All Service Packs)
	Microsoft Windows XP 32-bit and 64-bit (x64) (All Service Packs)
	Microsoft Windows Vista 32-bit and 64-bit (x64) (All Service Packs)
	Microsoft Windows 7 32-bit and 64-bit (x64) (All Service Packs)
	Microsoft Windows 8 32-bit and 64-bit (x64) (All Service Packs)
	Microsoft Windows 8.1 32-bit and 64-bit (x64) (All Service Packs)
Microsoft Windows 10 32-bit and 64-bit (x64) (All Service Packs)	
Database Software	SQL Server 2005 32-bit and 64-bit (x64) (All Service Packs)
	SQL Server 2008 32-bit and 64-bit (x64) (All Service Packs)
	SQL Server 2008 R2 32-bit and 64-bit (x64) (All Service Packs)
	SQL Server 2012 32-bit and 64-bit (x64) (All Service Packs)
	SQL Server 2014 32-bit and 64-bit (x64) (All Service Packs)
	SQL Server 2016 64-bit (x64) (All Service Packs)
Additional	.Net Framework 4.5 installed before you install the LiteSpeed UI Console and LiteSpeed



Requirements	Details
Software	<p>Core Cloud Components.</p> <p>.Net Framework 3.5 required with SQL Server 2005, 2008 and 2008R2.</p> <p>If using Tivoli Storage Manager (TSM), the TSM API and Backup/Archive Client version 5.3 or later should be installed.</p> <p>Microsoft Internet Explorer 6.0 or later.</p> <p>Adobe Reader 8 or later to view PDF guides.</p>

## Supported Cluster Environments

- Windows Server 2008 Failover Cluster
- Windows Server 2008 R2 Failover Cluster
- Windows Server 2012 Failover Cluster
- Windows Server 2012 R2 Failover Cluster
- Windows Server 2016 Failover Cluster
- HP PolyServe Matrix Sever 3.6.1
- Veritas Storage Foundation HA for Windows 5.0

## Supported Storage Appliances

LiteSpeed has been tested and is certified to work with Dell DR4100 and DR4000 Storage Appliances.

## VMWare and Hyper-V Environments

LiteSpeed has been tested and is certified to work under VMware and Hyper-V environments.

## Hardware Requirements

Requirements	Details
Processor	Follow the recommendations for the SQL Server version used.
Disk Space	<p>250 MB of disk space for installation</p> <p><b>NOTE:</b> The disk space required may vary based on options selected during installation.</p>
Memory	<p>Follow the recommendations for the SQL Server version used.</p> <p><b>NOTE:</b> The memory required may vary based on the following:</p>

Requirements	Details
	<ul style="list-style-type: none"> <li>• Applications that are running on your system</li> <li>• Size and complexity of the database</li> <li>• Amount of database activity</li> <li>• Number of concurrent users accessing the database</li> </ul>
Monitor	SVGA with a minimum resolution of 1024x768

## Privilege and Grant Requirements

LiteSpeed requires the following privileges and grants:

Account	Requirement
User account that performs the LiteSpeed installation	<p>Windows administrator rights and DBA privileges required to</p> <ul style="list-style-type: none"> <li>• Install stored procedures and extended stored procedures</li> <li>• Create databases, tables, and indexes</li> <li>• Insert, update, and delete to/from the MSDB, LiteSpeedLocal and LiteSpeedCentral databases</li> </ul>
User account that runs the LiteSpeed UI Console	<p>Power User privileges (or some equivalent).</p> <p><b>NOTE:</b> When executing a Double Click Restore, Windows Vista, Windows Server 2008, and higher require that the Windows user account is an administrator.</p>
SQL Server service account	<p>Sysadmin server role privileges required to</p> <ul style="list-style-type: none"> <li>• Push stats to local repository</li> <li>• Back up or restore using extended stored procedures</li> <li>• Execute a scheduled job</li> <li>• Start a job manually</li> </ul>
SQL Agent service account (or a proxy account)	<p><b>TIP:</b> The SQL service account needs at least read/write access to the following directory and all its contents:  C:\ProgramData\Quest Software\LiteSpeed\SQL Server\</p> <p><b>NOTE:</b> SQL Server Configuration Manager should always be used when changing SQL Server service accounts.</p>
Windows or SQL Server accounts specified during instance configuration ( <b>Start   All Programs   Quest Software   LiteSpeed for SQL Server   Instance Configuration</b> )	<p>If you select SQL Server authentication, the SQL Server account must have sysadmin server role privileges, while the Activity Manager service account must have the Log on as a service permission.</p> <p>If you select the Windows authentication method for both the local and central repository, then the Activity Manager service account specified on the Service Account page must have the sysadmin privileges and the Log on as a service permission.</p>

Account	Requirement
Windows or SQL Server account ( <b>Application Button   Repository Registration...</b> )	<p><b>NOTE:</b> If the central repository is located on another server, the LiteSpeed Activity Manager service account must have domain rights for two-way communication between the local and central repositories.</p> <p>Db_owner of the central repository (required to retrieve data from the central repository)</p>
Windows or SQL Server account ( <b>Application Button   SQL Server Registration...</b> )	<p>Sysadmin server role privileges required to</p> <ul style="list-style-type: none"> <li>• Connect to SQL Server and retrieve SQL Server properties</li> <li>• Back up or restore</li> <li>• Execute procedures, retrieve MSDB history</li> <li>• Access repositories</li> </ul>
TSM with LiteSpeed	<p>If using TSM, its recommended that the following line be added to the dsm.opt file used by LiteSpeed.</p> <pre>errorlogname "C:\ProgramData\Quest Software\LiteSpeed\SQL Server\Logs\dsierror.log"</pre>

---

# Installation Scenarios

## Install LiteSpeed

1. [Install LiteSpeed Locally.](#)
2. [Configure Server Instances.](#)
3. [Install LiteSpeed on Remote Server Instances.](#)
4. [Register Central Repositories.](#)
5. [Register Server Instances.](#)

For information about configuring LiteSpeed for the first use, please refer to the *User Guide*.

## Upgrade LiteSpeed

1. Make sure you have a license key for the new version of LiteSpeed for SQL Server.  
For more information, see [License Registration](#) on page 27. about licensing LiteSpeed.
2. Disable LiteSpeed jobs.

Before installing a new version of LiteSpeed, disable any LiteSpeed jobs that are scheduled to run at the time of upgrade on all servers where you plan to upgrade LiteSpeed.

### **To disable jobs on a server instance**

- a. Select a SQL Server instance in the Job Manager window.
- b. CTRL+Click to select multiple LiteSpeed jobs.
- c. Right-click anywhere in the selected area and select **Disable Jobs**.

**NOTE:** Instead of disabling LiteSpeed jobs, you can open SQL Server Configuration Manager, right-click SQL Server Agent and select **Stop**. Be aware that no other SQL Server Agent jobs will be able to run. SQL Server Agent jobs control backups, database maintenance, and other third-party application jobs. Review the full list of jobs and their upcoming schedules to make sure no other products will be affected during the upgrade.

3. Upgrade LiteSpeed UI Console.

To upgrade the LiteSpeed UI Console, run the LiteSpeed installation. [Install LiteSpeed Locally](#)

4. Upgrade LiteSpeed on SQL Server instances.

To upgrade LiteSpeed...	Complete the following steps...
Locally	<ol style="list-style-type: none"><li><a href="#">Install LiteSpeed Locally.</a></li><li><a href="#">Configure Server Instances.</a></li></ol>
Remotely	<ol style="list-style-type: none"><li>If the central repository is not installed or upgraded already (for example, during a local install), run the Instance Configuration wizard and select to configure the central repository. For more information, see <a href="#">Upgrade Repositories</a> on page 17.</li><li><a href="#">Install LiteSpeed on Remote Server Instances.</a></li></ol> <p><b>NOTE:</b> You must have the <b>Complete</b> installation on the machine from which you wish to run the remote deploy.</p>
On a cluster	Run local or remote cluster installation. For more information, see <a href="#">Cluster Installation</a> on page 23.

5. Enable LiteSpeed jobs.

After you upgraded LiteSpeed on all instances, enable jobs that were disabled before the upgrade.

**To enable jobs on a server instance**

- Select a SQL Server instance in the Job Manager window.
- CTRL+Click to select multiple LiteSpeed jobs.
- Right-click anywhere in the selected area and select **Enable Jobs**.

**NOTE:** If you stopped SQL Server Agent instead of disabling the jobs, right-click SQL Server Agent and select **Start**.

## Uninstall LiteSpeed

To uninstall, reinstall or change LiteSpeed, right-click LiteSpeed for SQL Server from the Add or Remove Programs option in the Control Panel and select an option.

**TIPS:**

- If you select **Change** and then **Remove**, you can delete LiteSpeed Local repositories during the uninstall.
- LiteSpeed Central repository and Repository Cleanup job for the central repository are not part of the uninstall. They will remain after the uninstall has completed.

# Installation

## Install LiteSpeed Locally

To begin a local server installation of LiteSpeed, copy the appropriate LiteSpeed .msi file to the server on which you will install.

### To install LiteSpeed on... Use this installer...

32-bit Windows	LiteSpeed.msi
64-bit Windows	LiteSpeed-x64.msi

You may run the installer from a network device, but for performance and stability reasons Quest Software recommends that the installer be run locally.

### To install LiteSpeed using the Installation wizard

1. Double-click .msi to start the installation.
2. Use the following information to help guide you through the installation wizard:

Screen	Description
User Information	Enter your user information. You will need to decide whether this application should be added to the Windows Start menu for all users or only for the installation owner. Quest Software recommends the default installation, for all users.
Destination Folder	Select the install location. You may select any directory that meets the following criteria: <ul style="list-style-type: none"><li>• The destination cannot be shared.</li><li>• The path must exist on all nodes.</li></ul> The default install location is: <i>C:\Program Files\Quest Software\LiteSpeed\SQL Server</i> .
Installation Type	Select <b>Complete</b> to install all features or <b>Custom</b> to install only selected features. If you select <b>Custom</b> , the components you may install are: <ul style="list-style-type: none"><li>• LiteSpeed Help</li><li>• LiteSpeed UI Console</li><li>• LiteSpeed Core—Installs LiteSpeed for SQL Server on each SQL Server instance on which you plan to use LiteSpeed.</li></ul>
License Information	Select one of the following options:

Screen	Description
	<ul style="list-style-type: none"> <li>• Run LiteSpeed in Trial Mode or Restore Only Mode</li> <li>• Register your copy of LiteSpeed</li> </ul> <p>Enter your license key obtained from Quest Software. Ensure that the key does not contain any line breaks or trailing spaces.</p> <p><b>NOTE:</b> If you upgrade from a LiteSpeed 8.5 or earlier installation then you will be required to enter a site message. If you upgrade from LiteSpeed 5.x or earlier you will be required to provide a new license key. For more information, see <a href="#">License Registration</a> on page 27.</p>

After the LiteSpeed program files are installed, the LiteSpeed Instance Configuration wizard will help you complete the installation of LiteSpeed components into your SQL Server environment.

## Configure Server Instances

In the LiteSpeed Instance Configuration wizard you will select the SQL Server instances that will use LiteSpeed and install extended stored procedures that LiteSpeed needs to run on the instances. You must install the extended stored procedures to take full advantage of LiteSpeed functionality on the selected instances.

In addition, you can configure activity logging using this wizard. Activity logging works by installing a local repository on a server instance to record its activity, and then installing a central repository to consolidate information from the local repositories. Quest Software recommends that you configure activity logging to benefit fully from LiteSpeed's features.

### *To configure server instances on the local computer*

1. Start the Instance Configuration wizard from **Start | All Programs | Quest Software | LiteSpeed for SQL Server | LiteSpeed Instance Configuration**. In the installation scenario, the LiteSpeed Instance Configuration wizard is launched automatically.
2. On the **SQL Instances** page, select the SQL Server instances on which you want to install the extended LiteSpeed stored procedures. The default behavior is to install the procedures onto all instances. Also, when you re-run the wizard to modify existing options, be sure to select **Install**.

**Tip:** If you do not want to install the procedures on an instance, click the action and change it to **Ignore**. When you select **Uninstall** next to an instance, the wizard removes the LiteSpeed extended stored procedures from the instance.

Verify the connection details for each server. To change login details, select **Windows** or **SQL Server** authentication.

3. On the **Activity Logging** page, select whether you want to configure a central *and* a local repository, or only a local repository.

LiteSpeed creates a local repository database to collect backup activity information. This database can be a dedicated database or an existing database of your choice. You can create the central repository once and point to it in subsequent installs.

If you decide to create and configure only local repositories during installation, you may define a central repository later using the LiteSpeed UI Console to enable consolidated logging.

4. Complete the wizard.

Use the following information to help guide you through instance configuration:

Page	Description
Service Account	<p>Specify login information for the LiteSpeed Activity Manager service. This service runs on each server and merges statistics from the LiteSpeed local repositories to the central repository database. Typically the account is a Windows domain account. It must have permissions to update the central repository database using Windows authentication (for a cluster configuration, the Windows account must have permissions on all nodes). For more information, see <a href="#">Privilege and Grant Requirements</a> on page 10.</p> <p><b>NOTE:</b></p> <ul style="list-style-type: none"> <li>You should select <b>Local system</b> when the central repository is on the same server as the local repository. If the central repository is on another server, the Activity Service will not be able to use Windows authentication to access it. You will need to provide SQL Server login and password on the Central Repository screen.</li> </ul>
Local Repository	<p>LiteSpeed uses the login details you specify to connect to the server instance, create the database, and add objects to it. This account must have the appropriate permissions.</p>
Native Backup Activity	<p>Select whether you want to update the local repository with information about native SQL Server backup activity and view it in the LiteSpeed UI Console. Click <b>Schedule</b> to modify the default schedule.</p>
Central Repository	<p>Point to the server instance and database.</p> <p><b>NOTE:</b> The local and central repositories must have the same version number in the LiteSpeed version table.</p>
Repository Update	<p>Indicate when you want the central repository to be updated with backup and job statistics. You can have LiteSpeed update the central repository:</p> <ul style="list-style-type: none"> <li>Automatically after any LiteSpeed activity, such as after every backup/restore operation (best for real time statistics).</li> <li>Via a scheduled SQL Server job (best for minimal network traffic).</li> <li>Manually.</li> </ul> <p><b>NOTE:</b> Quest Software recommends that you select <b>Automatically after any LiteSpeed activity</b> for both selections.</p>
Repository Cleanup	<p>Select to set repository maintenance, including when to delete old data from repositories, and how much of that data to delete. Old data can be deleted from the local repository, central repository, or both. The repositories are individually selected to remove activity older than a user-selectable number of days, weeks, months, or years. Additionally, <b>Edit Schedule</b> launches a screen where schedule information can be changed.</p> <p>Tip: Further repository cleanup can be accomplished by using the <a href="#">Purge Repository Data</a> procedure.</p>
Proxy settings	<p>Select <b>Use proxy settings</b> for cloud connections. When selected, you can add the proxy address and port. Optionally, you can select to use authentication and then enter username</p>



and password.

---

Summary Displays a summary of instance configuration selections.

---

## Upgrade Repositories

LiteSpeed automatically upgrades LiteSpeed repositories during local install. If you install LiteSpeed remotely, the central repository is not installed or upgraded, you need to run the Instance Configuration wizard and select to configure the central repository. You can run the Instance Configuration wizard from any machine where you have an instance of SQL Server and the LiteSpeed UI Console installed, for example, from the same machine from which you run the Remote Deploy.

If you install the new central repository, you need to register it in the LiteSpeed UI Console. For more information, see [Register Central Repositories](#) on page 28.

If you have a LiteSpeed central repository that needs to communicate with a repository for a previous version of LiteSpeed, do one of the following:

- Upgrade the statistic agent that transfers information between them on the outdated server instance. To do this, run the Remote Deploy Configuration wizard and select **Statistics Agent Only** on the Installer Path page. For more information, see [Install LiteSpeed on Remote Server Instances](#) on page 17.
- Upgrade both the server where the LiteSpeedLocal and LiteSpeedCentral to the same version of LiteSpeed.
- Rename the LiteSpeedLocal and LiteSpeedCentral databases and recreate them by running the Instance Configuration wizard.

## Install LiteSpeed on Remote Server Instances

You can install LiteSpeed on multiple remote server instances using the Remote Deploy Configuration wizard.

### NOTES:

- Before you run the Remote Deploy Configuration wizard, you must run **Complete** installation on the machine from which you wish to run the remote deploy.
- If the central repository is not installed or upgraded already (for example, during a local install), run the Instance Configuration wizard and select to configure the central repository. For more information, see [Upgrade Repositories](#) on page 17.
- Make sure you have a Windows domain user account with Administrator rights for the server instances you want to install LiteSpeed on. The machines must be part of the same domain.

### **To create and deploy installation files**

1. Click the Application Button and select **Remote Deploy...**
2. On the Remote Deploy Task page, select one of the following tasks:
  - Generate Remote Deploy configuration file—To create the installation files and optionally deploy them. If you select the Complete or Core Components Only installation and deploy the files, this will also configure remote server instances.
  - Deploy existing Remote Deploy configuration files—To deploy the installation and configuration files generated by the **Generate Remote Deploy configuration file** task.
  - Configure LiteSpeed using existing Remote Deploy configuration files—To configure remote server instances. You can use this task to complete installation after you deployed LiteSpeed using a deployment tool such as SCCM or LANDesk.
  - Validate existing Remote Deploy configuration files—To see if the configuration files are valid for installation and review installation options and expected actions.

**NOTE:** To deploy or validate existing Remote Deploy configuration files, you only need to select the main configuration file (usually, *LiteSpeedRemoteDeploy\_Configuration.xml*). The wizard will automatically validate all remaining server-specific configuration files.

3. If you selected the Generate Remote Deploy configuration file task, review the following for additional information:
  - Select one of the following installation types:
    - Complete—Installs LiteSpeed for SQL Server, LiteSpeed UI Console, and statistics agent (if you configured LiteSpeed to collect statistics).
    - Core Components Only—Installs LiteSpeed for SQL Server and statistics agent (if you configured LiteSpeed to collect statistics), but not the LiteSpeed UI Console
    - Client Only—Installs the LiteSpeed UI Console only.
    - Statistic Agent Only—Installs/updates the service that transfers information between local and central repositories.
  - If the current user account has Windows administrative rights but does not have access to the server instances, select **Use a different account for installation** to specify an additional account.

- Select the SQL Server instances on which to install LiteSpeed. Start by clicking the Refresh button to see all the machines found on the network. Select servers in the Servers drop-down list, confirm selection and click **Add**. If you prefer to add servers manually, enter server names separated by commas in the Servers field and click **Add**. Alternately, you can import servers from a text file (one server name or IP address per line).

Use the following information to help guide you through instance configuration:

Page	Description
Service Account	<p>Specify login information for the LiteSpeed Activity Manager service. This service runs on each server and merges statistics from the LiteSpeed local repositories to the central repository database. Typically the account is a Windows domain account. It must have permissions to update the central repository database using Windows authentication (for a cluster configuration, the Windows account must have permissions on all nodes). For more information, see <a href="#">Privilege and Grant Requirements</a> on page 10.</p> <p><b>NOTE:</b></p> <ul style="list-style-type: none"> <li>• You should select <b>Local system</b> when the central repository is on the same server as the local repository. If the central repository is on another server, the Activity Service will not be able to use Windows authentication to access it. You will need to provide SQL Server login and password on the Central Repository screen.</li> </ul>
Local Repository	<p>LiteSpeed uses the login details you specify to connect to the server instance, create the database, and add objects to it. This account must have the appropriate permissions.</p>
Native Backup Activity	<p>Select whether you want to update the local repository with information about native SQL Server backup activity and view it in the LiteSpeed UI Console. Click <b>Schedule</b> to modify the default schedule.</p>
Central Repository	<p>Point to the server instance and database.</p> <p><b>NOTE:</b> The local and central repositories must have the same version number in the LiteSpeed version table.</p>
Repository Update	<p>Indicate when you want the central repository to be updated with backup and job statistics. You can have LiteSpeed update the central repository:</p> <ul style="list-style-type: none"> <li>• Automatically after any LiteSpeed activity, such as after every backup/restore operation (best for real time statistics).</li> <li>• Via a scheduled SQL Server job (best for minimal network traffic).</li> <li>• Manually.</li> </ul> <p><b>NOTE:</b> Quest Software recommends that you select <b>Automatically after any LiteSpeed activity</b> for both selections.</p>
Repository Cleanup	<p>Select to set repository maintenance, including when to delete old data from repositories, and how much of that data to delete. Old data can be deleted from the local repository, central repository, or both. The repositories are individually selected</p>

to remove activity older than a user-selectable number of days, weeks, months, or years. Additionally, **Edit Schedule** launches a screen where schedule information can be changed.

Tip: Further repository cleanup can be accomplished by using the [Purge Repository Data](#) procedure.

Proxy settings	Select <b>Use proxy settings</b> for cloud connections. When selected, you can add the proxy address and port. Optionally, you can select to use authentication and then enter username and password.
----------------	---

Summary	Displays a summary of instance configuration selections.
---------	--

- On the License page, if you select **Register later**, the installed LiteSpeed version will operate as a trial on all instances, until you register it or the trial period expires.
4. On the Deploy LiteSpeed page, select whether you want to deploy the files immediately or run the wizard later and select the appropriate option.

**Caution:** The Remote Configuration wizard does not prevent you from deploying the files if they are not valid.

**NOTE:** The **Simultaneous installs** field determines how many servers to install simultaneously. For example, if you select to install LiteSpeed on 50 servers and specify 10 simultaneous installs, then the wizard would install LiteSpeed on 10 servers at a time until it has installed all 50 servers.

5. Complete the wizard.

## Install LiteSpeed Silently

LiteSpeed may also be installed locally from the command line or remotely using the LANDesk, SCCM or WMI deployment tools.

**NOTE:** The silent installation procedure requires the user running the installer be logged into the Windows machine with Local Administrator level access.

The silent install requires the following:

- LiteSpeed installer.
- Server-specific .xml file containing information about the machine onto which LiteSpeed is being installed. You can generate it using the **RemoteDeploy.exe** utility, supplied with LiteSpeed. For more information, see [Install LiteSpeed on Remote Server Instances](#) on page 17..

## Command-Line Parameters

**NOTE:** All paths in the msixec string should be passed as fully qualified paths, including the drive letter.

Parameter	Description
/i	This is an installation.

Parameter	Description
/!*v	Invokes logging (The *v invokes verbose logging.) The path of the log file is indicated by, "C:\logfile.txt").
/qn	Suppresses the graphic user interface.
SILENTPHASE=0	Runs Instance Configuration silently.
SILENTINSTALLXML	Indicates the fully qualified path to the .xml file for Instance Configuration. Must be local to the system.  <b>NOTE:</b> Version 6.5 of LiteSpeed introduced the new improved XML file format. Although the configuration files created by a LiteSpeed version prior to 6.5 can be manually used with the current LiteSpeed installer, it is recommended, that you generate the new files. For more information, see <a href="#">Install LiteSpeed on Remote Server Instances</a> on page 17.
LICENSEKEY	Passes the license key.
SITEMSG	Passes site message. Required only when upgrading from a LiteSpeed 8.5 or earlier installation.
LICENSETYPE	Indicates the license type: <ul style="list-style-type: none"> <li>• "LICENSE"</li> <li>• "RESTORE"—LiteSpeed will be installed in Restore Only mode.</li> </ul>
ENGINEONLY=1	Installs LiteSpeed for SQL Server without the LiteSpeed UI Console.
CLIENTONLY=1	Installs only the LiteSpeed UI Console.
INSTALLDIR="D:\Program Files\Quest Software"	Provides an alternate install destination to the default C:\Program Files.

## Examples

### To run a silent install

```
msiexec /i "c:\Litespeed.msi" SILENTINSTALLXML="C:\LiteSpeedRemoteDeploy_Server.xml"
SILENTPHASE=0 /qn
```

### To register LiteSpeed on all\* instances during install

```
msiexec /i "c:\LiteSpeed.msi" LICENSEKEY="C20TM3Q3K2HD74UDLBMHC6KYV6HZ3MQFNXZFB-123-45678-34" SITEMSG="Trial Version" LICENSETYPE="LICENSE"
SILENTINSTALLXML="c:\LiteSpeedRemoteDeploy_Server.xml" SILENTPHASE=0 /qn
```

\*—all instances that were specified in the .XML file.

SITEMSG="Trial Version" - The Site Message is applicable only when upgrading from a LiteSpeed 8.5 or earlier installation.

## To run an install with logging enabled

```
msiexec /i "c:\LiteSpeed.msi" /l*v "c:\logfile.txt"  
SILENTINSTALLXML="c:\LiteSpeedRemoteDeploy_Server.xml" SILENTPHASE=0 /qn
```

## To run install, but not Instance Configuration

```
msiexec /i "c:\Litespeed.msi" SILENTPHASE=0 /qn
```

## To uninstall LiteSpeed

```
msiexec /uninstall "c:\Litespeed.msi"
```

# Cluster Installation

Before you begin the installation process, please review the following requirements:

- For cluster installs, it is required that users log in and install with a user account that has Administrator rights to all the nodes in the cluster.
- You must select an unshared local drive for the LiteSpeed installation directory. This location should be the same for all nodes of the cluster. For example, *C:\Program Files\Quest Software\LiteSpeed*.
- The Remote Registry service should be running on all nodes involved in a cluster installation.

Review the following to select the installation type.

Feature	Local	Remote
Installs on multiple nodes at once	Yes*	Yes
Installs on multiple instances on those nodes	Yes	Yes
Automatically upgrades LiteSpeed during install	Yes	Yes
Requires logging into the cluster node	Yes	No
Requires running the .msi on each node	Yes**	Yes

\*—To the other cluster nodes.

\*\*—Install LiteSpeed to the active node first. That should install LiteSpeed to all nodes. If there are problems with the automatic installation to remote nodes, then install to the remaining nodes for the local cluster installations.

# Local Cluster Installations

Use the following installation instructions for both active-passive and active-active Microsoft Cluster Service or Failover installations.

- The user you are logged in as needs to be a Domain User in the local administrators group on all the nodes of the cluster.
- If you supply the license once during the local install on the first node and it will install that license on the other nodes. If the first node was installed in demo mode then the other nodes will be as well.
- Install LiteSpeed to the active node first and then to the remaining nodes.

## ***To install LiteSpeed on a cluster***

1. Launch the .msi file on one node in the cluster. This node must have an install of each SQL Server instance on which you want to install LiteSpeed.
2. Choose “Install LiteSpeed to all nodes automatically” which is the default option. This is the recommended option for doing an initial installation to the cluster configuration.
3. Complete the wizard. For more information, see [Install LiteSpeed Locally](#) on page 14.

## ***To install LiteSpeed on a node only***

1. If you have added a new node to an existing cluster configuration and want to install LiteSpeed to this new node only, run .msi on this particular node and use the “Install LiteSpeed to this node only” option.

Instance Configuration uses WMI to deploy the .msi file to all nodes. You do not need to run the installation from the passive nodes or failover any nodes of the cluster during the installation process. This process automatically upgrades any old version of LiteSpeed on any node.

If you have issues while running the Instance Configuration Wizard during installation, cancel out of the wizard and complete the installation without it. After the installation completes run the Instance Configuration Wizard from the Start menu and complete it.

# Remote Cluster Installations

## Using LiteSpeed Remote Deploy Tool

You can install LiteSpeed on clustered instances with the Remote Deploy tool. LiteSpeed automatically installs on the selected server instances. For more information, see [Install LiteSpeed on Remote Server Instances](#) on page 17.

### **NOTES:**

- To install or upgrade LiteSpeed on HP Polyserve and Veritas Storage Foundation cluster, you may need to manually add all the nodes you want to deploy LiteSpeed to.
- When running Remote Deploy on an active node, you cannot use a different account for installation on the current cluster. The solution includes using a third machine, using a passive node, or using any node name instead of the cluster name on the step “SQL Servers.”



- An access is denied error can sometimes be displayed on the SQL Servers step when the user connects to an active node of a cluster and then tries to add a cluster name using the Add Server step. The solution includes running Remote Deploy from passive node, using an Administrator account to connect to node, or running Remote Deploy from a third machine that is not in the cluster.

## Using SCCM or LANDesk

LiteSpeed can also be deployed silently via a deployment tool such as SCCM or LANDesk. In a mass deployment, the steps are as follows:

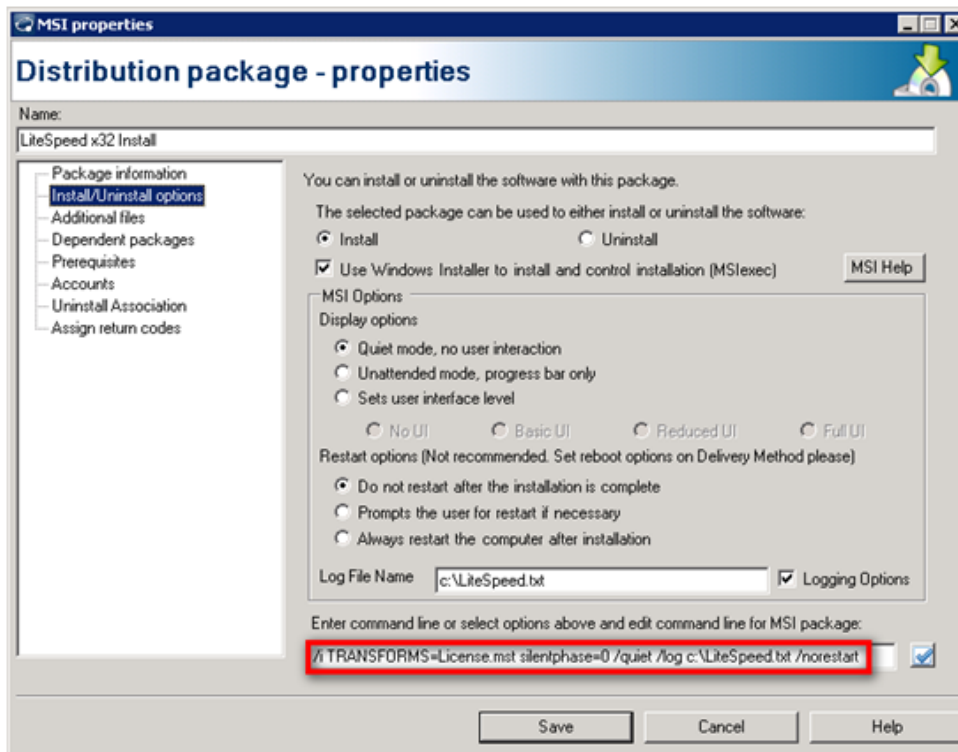
1. Deploy the MSI using a deployment tool.
2. Create the XML files for the servers.
3. Configure the instances.

### Deploy the MSI using a deployment tool

To setup the package for deployment create a distribution package in your deployment tool.

In the command line, specify "silentphase=0" to cause Instance Configuration not to be run. You can customize the installation by creating an MSI transform and by using the `TRANSFORMS=MyTransformName.mst` command-line parameter for MSI package.

The package should be set to run in silent mode with no user interaction and to suppress any reboot. Separate packages need to be set up for x32, and x64 systems.



Once the package is setup create a distribution task and deploy the .msi to the cluster nodes.

## **Create the XML files for the servers**

Use the Remote Deploy Configuration wizard to create the .xml files. For more information, see [Install LiteSpeed on Remote Server Instances](#) on page 17.

## **Configure the instances**

You can configure LiteSpeed on the remote server instances using the Remote Deploy wizard, or by logging into the server and manually running Instance Configuration.

---

# License Registration

You need to license LiteSpeed for SQL Server with a commercial key or a custom evaluation key to use many advanced features for managing backup and restore processes.

Tips:

- There is a way to manage licenses using Edit SQL Server Registration dialog. See [Register Server Instances](#).
- You can set or change the license for any server registered in the LiteSpeed console by right-clicking on the SQL Server instance, selecting the "LiteSpeed Instance Settings," and then selecting "LiteSpeed License."

If you purchased LiteSpeed and have a valid license, you can register LiteSpeed during the installation or upgrade, or any time:

- Using the LiteSpeed UI Console (**Help | License...**)
  - note: This will only register a local copy of LiteSpeed
- Using `xp_sqlitespeed_licenseinfo`
- Using the `LicenseInfoCmd` command-line utility

note: For more information about the LiteSpeed extended stored procedures and command-line utilities, please refer to the LiteSpeed *User Guide*.

If you want to purchase LiteSpeed or require a trial extension or have any other licensing questions related to your purchase please contact your sales representative or go to <https://www.quest.com/company/contact-us.aspx>.

# Configuration

## Register Central Repositories


When you create or upgrade a central repository, you must register it in the LiteSpeed UI Console before you can view its activity statistics.


Note: If the LiteSpeed install includes a central repository and the console, then LiteSpeed defaults the console to use that central repository automatically without the need to manually register and select it in the LiteSpeed console.

### To register a repository

1. Click **Repository Registration** from the **Application Menu**.

Alternately you can click  beside the **Central Repository** field at the bottom of the LiteSpeed UI Console and select **Select Repository**.

2. Click  **Add repository** and complete the Register New Repository dialog fields.

Server name:	Enter the name of the server instance, or click  to select from a list of available server instances.
Display name:	Enter the name to display in the navigation pane tree.
Connect using:	Select the following options:
Windows authentication	Select this option to connect to the SQL Server instance using Windows authentication.
SQL Server Authentication	Select this option to connect to the SQL Server instance using SQL Server authentication. Complete the <b>Login name</b> and <b>Password</b> fields.
Additional Connection Parameters	Enter additional connection string parameters. <b>TIP:</b> Use this selection as needed to include custom parameters such as encryption, AlwaysOn and others to the SQL server connection string.
Repository database:	Displays the name of the repository database selected.
Repository version:	Displays the version of the repository.

3. Click  **Test connection**.

### TIPS:

- Select add repository, edit connection, delete connection, test connection, import, and export by clicking the corresponding button in the Edit Repository Registration dialog. Imports can be done from .csv files and from LiteSpeed 4.x.
- You can click the **Display name**, **Authentication**, **Login**, or **Password** fields in the grid to change their value.

## Select a Central Repository

The LiteSpeed UI Console displays the activity statistics in the Backup Manager Overview tab for the selected central repository. You can register multiple central repositories in the LiteSpeed UI Console, but you can only view activity for one at a time.

### *To select a central repository*

Select **Tools | Options** and select the repository on the General tab.

**Tip:** You can also click ▾ beside the **Central Repository** field in the status bar of the LiteSpeed UI Console and select the repository from the list.

## Register Server Instances

You must register server instances before you can manage them in the LiteSpeed UI Console. You can also register server instances that do not have LiteSpeed installed on them and perform native backups and restores through the LiteSpeed UI Console.

**NOTE:** You need to register all SQL Server instances involved in log shipping in the LiteSpeed UI Console to retrieve log shipping data for them.

---

### Scenario

There are several server instances configured to report to a central repository and you need to register some of them in your LiteSpeed UI Console.

---

### *To register server instances*

**TIP:** From the **Edit SQL Server Registration** window you can add server, edit connection, display overview tab, test connection, import and export. You can also edit credential information for each instance including display name, server name, authentication, login, password, and parent group. You can also see information for each instance including license, license type, and license expire date.

1. Select **Home | SQL Server Registration | Manage**.
2. Click **Add server** to add an individual server or **Import** to import server instances from a CSV file or the LiteSpeed central repository.

**NOTE:** You can import instances from a central repository, if the central repository is configured and selected for use.

**Scenario:** Click **Import** and then **From Central Repository**. Select the central repository to import server instances from, review the list of servers, optionally deselecting those you do not want to be registered in your LiteSpeed UI Console, click **OK** and continue with step 4.

3. (If you selected to import servers from a CSV file) Review the following for additional information:

The first line of a valid CSV file contains the following column headers:

- **DisplayName**—Specify how you want to display servers in the navigation pane tree.
- **ServerName**—Computer name or IP address following by port number: <IP\_address>, <port\_number>.
- **Authentication**—Windows or SQL Server.
- **LoginName**—User name that is used for the SQL Server connection. It can be a Windows login in the following format: 'Domain\Username', or SQL Server login.
- **Password**—Encrypted password for the login. May be blank.
- **LicenseInfo**—License key information (Site Message).
- **LicenseType**—Examples: Trial, Permanent, Term.
- **LicenseEdition**—Style of license. Example: Enterprise.
- **Path**—Server group location of the instance.
- **ExpireDate**—Date that the LiteSpeed license expires.

Next lines contain server parameters, separated by semicolons (;), a separate line for a server. You can omit the LoginName and Password parameters to complete them later in the LiteSpeed UI Console.

Example:

```
DisplayName;ServerName;Authentication;LoginName;Password;LicenseInfo  
LicenseType;LicenseEdition;Path;ExpireDate  
W2K3-14;W2K3-14;Windows;DOMAIN\Username;3w663k3E  
spb9884_sql_auth;spb9884;SQL Server;sa;321
```

**NOTE:** If you export server instances to a CSV file, it will contain SQL logins and obfuscated passwords. You need to manually edit the CSV file to remove the connection information before you import instances from this file.

4. Complete the fields as necessary. Review the following for additional information:

SQL Server	Specify server name or IP address using the following format: <IP_address>, <port_number>.
Connect using	Select either Windows authentication or SQL Server authentication (enter the user name and password).  <b>NOTE:</b> Microsoft recommends using Windows authentication when possible because it is more secure than SQL Server authentication.
Additional Connection Parameters	Enter additional connection string parameters.  <b>Tip:</b> Use this selection as needed to include custom parameters such as encryption, AlwaysOn and others to the SQL server connection string.
Advanced>>Display Name	Enter the name to display in the navigation pane tree.

**Tips:**

- You can click the **Display name**, **Authentication**, **Login**, or **Password** fields in the grid to change their value.
- Click **Display Overview Tab** to see the Overview tab of the LiteSpeed UI Console window for the selected instance. This will let you stay on the registration dialog and continue editing or registering new server instances, but still see overview information of the various instances.

5. (Optional) In the Server tree, click and drag server instances to move them between groups.

**Tip:** In the Server tree, you can see registered SQL Server Instance nodes sorted alphabetically. To use a custom sort order, select **View | Sort Instances | Custom**.

### Scenario

There are several server instances configured to report to a central repository and you want a new colleague to manage some of them in their LiteSpeed UI Console. Define which server instances are eligible for import.

By default, LiteSpeed allows all of the instances to be imported into other clients when you select to import from a central repository, unless you specifically exclude instances.

#### ***To exclude a server instance from import***

1. Right-click a server in the Server tree in the navigation pane and select **Edit | SQL Server Registration**.
2. Clear the **Allow import of this instance...** checkbox and click **OK**.

## Create Server Groups

### ***To create server groups***

1. Select the **Backup Manager** pane (CTRL+1).
2. Group the Backup Manager tree by server group (**View | Group Instances By | Server Groups**).

3. Select one of the following options:

Create a top-level server group	Right-click <b>SQL Servers</b> at the top of the navigation tree and select <b>New SQL Server Group</b> .
Create a subgroup of an existing server group	Right-click the group in the navigation pane tree and select <b>New SQL Server Group</b> .

**Tips:**

- To create multi-level groups, create the parent group first. When you create the subgroup, the parent group will already be there for you to select.
- To edit or delete a server group, right-click the group and select the appropriate option.
- You can also group server instances by categories. To switch between server groups and categories, select **View | Group Instances By**.



## We are more than just a name

We are on a quest to make your information technology work harder for you. That is why we build community-driven software solutions that help you spend less time on IT administration and more time on business innovation. We help you modernize your data center, get you to the cloud quicker and provide the expertise, security and accessibility you need to grow your data-driven business. Combined with Quest's invitation to the global community to be a part of its innovation, and our firm commitment to ensuring customer satisfaction, we continue to deliver solutions that have a real impact on our customers today and leave a legacy we are proud of. We are challenging the status quo by transforming into a new software company. And as your partner, we work tirelessly to make sure your information technology is designed for you and by you. This is our mission, and we are in this together. Welcome to a new Quest. You are invited to Join the Innovation.

## Our brand, our vision. Together.

Our logo reflects our story: innovation, community and support. An important part of this story begins with the letter Q. It is a perfect circle, representing our commitment to technological precision and strength. The space in the Q itself symbolizes our need to add the missing piece — you — to the community, to the new Quest.

## Contacting Quest

For sales or other inquiries, visit [www.quest.com/company/contact-us.aspx](http://www.quest.com/company/contact-us.aspx) or call +1 949 754-8000.

## Technical support resources

Technical support is available to Quest customers with a valid maintenance contract and customers who have trial versions. You can access the Quest Support Portal at <https://support.quest.com>.

The Support Portal provides self-help tools you can use to solve problems quickly and independently, 24 hours a day, 365 days a year. The Support Portal enables you to:

- Submit and manage a Service Request
- View Knowledge Base articles
- Sign up for product notifications
- Download software and technical documentation
- View how-to-videos
- Engage in community discussions
- Chat with support engineers online
- View services to assist you with your product

# Third Party Contributions

This product contains some third-party components (listed below). Copies of their licenses may be found at referencing <http://www.quest.com/legal/license-agreements.aspx>. Source code for components marked with an asterisk (\*) is available at <http://opensource.quest.com>.

**Table 1: List of Third-Party Contributions**

Component	License or acknowledgement
ActiPro Syntax Editor (for Windows Forms) 4.0	ActiPro Syntax Editor (for Windows Forms) 4.0 license
Active Directory Common Dialogs .NET 2.5.0	Ms-PL
AWS SDK for .NET 3.3.8	<p>AWS SDK for .NET</p> <p>Copyright 2009-2017 Amazon.com, Inc. or its affiliates. All Rights Reserved.</p> <p>*****</p> <p>THIRD PARTY COMPONENTS</p> <p>*****</p> <p>This software includes third party software subject to the following copyrights:</p> <p>-Json processing from LitJson –</p> <p>All the source code and related files distributed with this software have been dedicated to the public domain by the authors.</p> <p>Anyone is free to copy, modify, publish, use, compile, sell, or distribute the software, either in source code form or as a compiled binary, for any purpose, commercial or non-commercial, and by any means.</p> <p>- Parsing PEM files from Bouncy Castle -</p> <p>Copyright (c) 2000 - 2011 The Legion Of The Bouncy Castle (<a href="http://www.bouncycastle.org">http://www.bouncycastle.org</a>)</p> <p>Permission is hereby granted, free of charge, to any person obtaining a copy of this software and associated documentation files (the "Software"), to deal in the Software without restriction, including without limitation the rights to use, copy, modify, merge, publish, distribute, sublicense, and/or sell copies of the Software, and to permit persons to whom the Software is furnished to do so, subject to the following conditions:</p>

**Component****License or acknowledgement**

---

The above copyright notice and this permission notice shall be included in all copies or substantial portions of the Software.

THE SOFTWARE IS PROVIDED "AS IS", WITHOUT WARRANTY OF ANY KIND, EXPRESS OR IMPLIED, INCLUDING BUT NOT LIMITED TO THE WARRANTIES OF MERCHANTABILITY, FITNESS FOR A PARTICULAR PURPOSE AND NONINFRINGEMENT. IN NO EVENT SHALL THE AUTHORS OR COPYRIGHT HOLDERS BE LIABLE FOR ANY CLAIM, DAMAGES OR OTHER LIABILITY, WHETHER IN AN ACTION OF CONTRACT, TORT OR OTHERWISE, ARISING FROM, OUT OF OR IN CONNECTION WITH THE SOFTWARE OR THE USE OR OTHER DEALINGS IN THE SOFTWARE.

- Performing CRC32 checks from vbAccelerator.com

vbAccelerator Software License

Version 1.0

Copyright (c) 2002 vbAccelerator.com

Redistribution and use in source and binary forms, with or without modification, are permitted provided that the following conditions are met:

Redistributions of source code must retain the above copyright notice, this list of conditions and the following disclaimer

Redistributions in binary form must reproduce the above copyright notice, this list of conditions and the following disclaimer in the documentation and/or other materials provided with the distribution.

The end-user documentation included with the redistribution, if any, must include the following acknowledgment:

"This product includes software developed by vbAccelerator (<http://vbaccelerator.com/>)."

Alternately, this acknowledgment may appear in the software itself, if and wherever such third-party acknowledgments normally appear.

The names "vbAccelerator" and "vbAccelerator.com" must not be used to endorse or promote products derived from this software without prior written permission. For written permission, please contact vbAccelerator through [steve@vbaccelerator.com](mailto:steve@vbaccelerator.com).

Products derived from this software may not be called "vbAccelerator", nor may "vbAccelerator" appear in their name, without prior written permission of vbAccelerator.

THIS SOFTWARE IS PROVIDED "AS IS" AND ANY EXPRESSED OR IMPLIED WARRANTIES, INCLUDING, BUT NOT LIMITED TO, THE IMPLIED WARRANTIES OF MERCHANTABILITY AND FITNESS FOR A PARTICULAR PURPOSE ARE DISCLAIMED. IN NO EVENT SHALL VBACCELERATOR OR ITS CONTRIBUTORS BE LIABLE FOR ANY DIRECT, INDIRECT, INCIDENTAL, SPECIAL, EXEMPLARY, OR CONSEQUENTIAL DAMAGES (INCLUDING, BUT NOT LIMITED TO, PROCUREMENT OF SUBSTITUTE GOODS OR SERVICES; LOSS OF USE, DATA, OR PROFITS; OR BUSINESS INTERRUPTION) HOWEVER CAUSED AND ON

**Component****License or acknowledgement**

---

ANY THEORY OF LIABILITY, WHETHER IN CONTRACT, STRICT LIABILITY, OR TORT (INCLUDING NEGLIGENCE OR OTHERWISE) ARISING IN ANY WAY OUT OF THE USE OF THIS SOFTWARE, EVEN IF ADVISED OF THE POSSIBILITY OF SUCH DAMAGE.

This software consists of voluntary contributions made by many individuals on behalf of the vbAccelerator. For more information, please see <http://vbaccelerator.com/>.

The vbAccelerator licence is based on the Apache Software Foundation Software Licence, Copyright (c) 2000 The Apache Software Foundation. All rights reserved.

- MD5 checks in the Windows Phone 8 variant of the SDK from Microsoft Corporation

Microsoft Public License (MS-PL)

This license governs use of the accompanying software. If you use the software, you accept this license. If you do not accept the license, do not use the software.

#### 1. Definitions

The terms "reproduce," "reproduction," "derivative works," and "distribution" have the same meaning here as under U.S. copyright law.

A "contribution" is the original software, or any additions or changes to the software.

A "contributor" is any person that distributes its contribution under this license.

"Licensed patents" are a contributor's patent claims that read directly on its contribution.

#### 2. Grant of Rights

(A) Copyright Grant- Subject to the terms of this license, including the license conditions and limitations in section 3, each contributor grants you a non-exclusive, worldwide, royalty-free copyright license to reproduce its contribution, prepare derivative works of its contribution, and distribute its contribution or any derivative works that you create.

(B) Patent Grant- Subject to the terms of this license, including the license conditions and limitations in section 3, each contributor grants you a non-exclusive, worldwide, royalty-free license under its licensed patents to make, have made, use, sell, offer for sale, import, and/or otherwise dispose of its contribution in the software or derivative works of the contribution in the software.

#### 3. Conditions and Limitations

(A) No Trademark License- This license does not grant you rights to use any contributors' name, logo, or trademarks.

(B) If you bring a patent claim against any contributor over patents that you claim are infringed by the software, your patent license from such contributor to the software ends automatically.

(C) If you distribute any portion of the software, you must retain all copyright, patent, trademark, and attribution notices that are present in the software.

**Component****License or acknowledgement**

---

(D) If you distribute any portion of the software in source code form, you may do so only under this license by including a complete copy of this license with your distribution. If you distribute any portion of the software in compiled or object code form, you may only do so under a license that complies with this license.

(E) The software is licensed "as-is." You bear the risk of using it. The contributors give no express warranties, guarantees or conditions. You may have additional consumer rights under your local laws which this license cannot change. To the extent permitted under your local laws, the contributors exclude the implied warranties of merchantability, fitness for a particular purpose and non-infringement.

\*\* iOS4Unity - <https://github.com/Hitcents/iOS4Unity/>

\*\* SQLitePCLRaw - <https://github.com/ericsink/SQLitePCL.raw>

Apache License

Version 2.0, January 2004

<http://www.apache.org/licenses/>

TERMS AND CONDITIONS FOR USE, REPRODUCTION, AND DISTRIBUTION

1. Definitions.

"License" shall mean the terms and conditions for use, reproduction, and distribution as defined by Sections 1 through 9 of this document.

"Licensor" shall mean the copyright owner or entity authorized by the copyright owner that is granting the License.

"Legal Entity" shall mean the union of the acting entity and all other entities that control, are controlled by, or are under common control with that entity. For the purposes of this definition, "control" means (i) the power, direct or indirect, to cause the direction or management of such entity, whether by contract or otherwise, or (ii) ownership of fifty percent (50%) or more of the outstanding shares, or (iii) beneficial ownership of such entity.

"You" (or "Your") shall mean an individual or Legal Entity exercising permissions granted by this License.

"Source" form shall mean the preferred form for making modifications, including but not limited to software source code, documentation source, and configuration files.

"Object" form shall mean any form resulting from mechanical transformation or translation of a Source form, including but not limited to compiled object code, generated documentation, and conversions to other media types.

"Work" shall mean the work of authorship, whether in Source or Object form, made available under the License, as indicated by a copyright notice that is included in or attached to the work

(an example is provided in the Appendix below).

"Derivative Works" shall mean any work, whether in Source or Object form, that is based on (or derived from) the Work and for which the editorial revisions, annotations, elaborations, or other modifications represent, as a whole, an original work of authorship. For the purposes of this License, Derivative Works shall not

include works that remain separable from, or merely link (or bind by name) to the interfaces of, the Work and Derivative Works thereof.

"Contribution" shall mean any work of authorship, including the original version of the Work and any modifications or additions to that Work or Derivative Works thereof, that is intentionally submitted to Licensor for inclusion in the Work by the copyright owner or by an individual or Legal Entity authorized to submit on behalf of the copyright owner. For the purposes of this definition, "submitted" means any form of electronic, verbal, or written communication sent to the Licensor or its representatives, including but not limited to communication on electronic mailing lists, source code control systems, and issue tracking systems that are managed by, or on behalf of, the Licensor for the purpose of discussing and improving the Work, but excluding communication that is conspicuously marked or otherwise designated in writing by the copyright owner as "Not a Contribution."

"Contributor" shall mean Licensor and any individual or Legal Entity on behalf of whom a Contribution has been received by Licensor and subsequently incorporated within the Work.

2. Grant of Copyright License. Subject to the terms and conditions of this License, each Contributor hereby grants to You a perpetual, worldwide, non-exclusive, no-charge, royalty-free, irrevocable copyright license to reproduce, prepare Derivative Works of, publicly display, publicly perform, sublicense, and distribute the Work and such Derivative Works in Source or Object form.

3. Grant of Patent License. Subject to the terms and conditions of this License, each Contributor hereby grants to You a perpetual, worldwide, non-exclusive, no-charge, royalty-free, irrevocable (except as stated in this section) patent license to make, have made, use, offer to sell, sell, import, and otherwise transfer the Work, where such license applies only to those patent claims licensable by such Contributor that are necessarily infringed by their Contribution(s) alone or by combination of their Contribution(s) with the Work to which such Contribution(s) was submitted. If You institute patent litigation against any entity (including a cross-claim or counterclaim in a lawsuit) alleging that the Work or a Contribution incorporated within the Work constitutes direct or contributory patent infringement, then any patent licenses granted to You under this License for that Work shall terminate as of the date such litigation is filed.

4. Redistribution. You may reproduce and distribute copies of the Work or Derivative Works thereof in any medium, with or without modifications, and in Source or Object form, provided that You meet the following conditions:

(a) You must give any other recipients of the Work or Derivative Works a copy of this License; and

(b) You must cause any modified files to carry prominent notices stating that You changed the files; and

(c) You must retain, in the Source form of any Derivative Works that You distribute, all copyright, patent, trademark, and attribution notices from the Source form of the Work, excluding those notices that do not pertain to any part of the Derivative Works; and

(d) If the Work includes a "NOTICE" text file as part of its distribution, then any Derivative Works that You distribute must include a readable copy of the attribution notices contained within such NOTICE file, excluding those notices that do not pertain to any part of the Derivative Works, in at least one of the following places: within a NOTICE text file distributed as part of the Derivative Works; within the Source form or documentation, if provided along with the Derivative Works; or, within a display generated by the Derivative Works, if and wherever such third-party notices normally appear. The contents of the NOTICE file are for informational purposes only and do not modify the License. You may add Your own attribution notices within Derivative Works that You distribute, alongside or as an addendum to the NOTICE text from the Work, provided that such additional attribution notices cannot be construed as modifying the License.

You may add Your own copyright statement to Your modifications and may provide additional or different license terms and conditions for use, reproduction, or distribution of Your modifications, or for any such Derivative Works as a whole, provided Your use, reproduction, and distribution of the Work otherwise complies with the conditions stated in this License.

5. Submission of Contributions. Unless You explicitly state otherwise, any Contribution intentionally submitted for inclusion in the Work by You to the Licensor shall be under the terms and conditions of this License, without any additional terms or conditions. Notwithstanding the above, nothing herein shall supersede or modify the terms of any separate license agreement you may have executed with Licensor regarding such Contributions.

6. Trademarks. This License does not grant permission to use the trade names, trademarks, service marks, or product names of the Licensor, except as required for reasonable and customary use in describing the origin of the Work and reproducing the content of the NOTICE file.

7. Disclaimer of Warranty. Unless required by applicable law or agreed to in writing, Licensor provides the Work (and each Contributor provides its Contributions) on an "AS IS" BASIS, WITHOUT WARRANTIES OR CONDITIONS OF ANY KIND, either express or implied, including, without limitation, any warranties or conditions of TITLE, NON-INFRINGEMENT, MERCHANTABILITY, or FITNESS FOR A PARTICULAR PURPOSE. You are solely responsible for determining the appropriateness of using or redistributing the Work and assume any risks associated with Your exercise of permissions under this License.

8. Limitation of Liability. In no event and under no legal theory, whether in tort (including negligence), contract, or otherwise, unless required by applicable law (such as deliberate and grossly negligent acts) or agreed to in writing, shall any Contributor be liable to You for damages, including any direct, indirect, special, incidental, or consequential damages of any character arising as a result of this License or out of the use or inability to use the Work (including but not limited to damages for loss of goodwill, work stoppage, computer failure or malfunction, or any and all other commercial damages or losses), even if such Contributor has been advised of the possibility of such damages.

9. Accepting Warranty or Additional Liability. While redistributing the Work or

Component	License or acknowledgement
	<p>Derivative Works thereof, You may choose to offer, and charge a fee for, acceptance of support, warranty, indemnity, or other liability obligations and/or rights consistent with this License. However, in accepting such obligations, You may act only on Your own behalf and on Your sole responsibility, not on behalf of any other Contributor, and only if You agree to indemnify, defend, and hold each Contributor harmless for any liability incurred by, or claims asserted against, such Contributor by reason of your accepting any such warranty or additional liability.</p> <p>END OF TERMS AND CONDITIONS</p>
<p>BouncyCastle.Crypto.dll 1.8.1</p>	<p>Copyright (c) 2000 - 2017 The Legion of the Bouncy Castle Inc. (<a href="http://www.bouncycastle.org">http://www.bouncycastle.org</a>)</p> <p>Permission is hereby granted, free of charge, to any person obtaining a copy of this software and associated documentation files (the "Software"), to deal in the Software without restriction, including without limitation the rights to use, copy, modify, merge, publish, distribute, sublicense, and/or sell copies of the Software, and to permit persons to whom the Software is furnished to do so, subject to the following conditions:</p> <p>The above copyright notice and this permission notice shall be included in all copies or substantial portions of the Software.</p> <p>THE SOFTWARE IS PROVIDED "AS IS", WITHOUT WARRANTY OF ANY KIND, EXPRESS OR IMPLIED, INCLUDING BUT NOT LIMITED TO THE WARRANTIES OF MERCHANTABILITY, FITNESS FOR A PARTICULAR PURPOSE AND NONINFRINGEMENT. IN NO EVENT SHALL THE AUTHORS OR COPYRIGHT HOLDERS BE LIABLE FOR ANY CLAIM, DAMAGES OR OTHER LIABILITY, WHETHER IN AN ACTION OF CONTRACT, TORT OR OTHERWISE, ARISING FROM, OUT OF OR IN CONNECTION WITH THE SOFTWARE OR THE USE OR OTHER DEALINGS IN THE SOFTWARE.</p>
<p>CMarkup Developer 11.2</p>	<p>CMarkup Developer 1.0 license</p>
<p>Developer Express .NET (DXperience) 16.2.5</p>	<p>Developer Express .Net (DXperience) 12.1.6</p>
<p>Google APIs Client Library for .NET 1.20.0</p>	<p>Apache 2.0</p>
<p>Json.net 7.0.1</p>	<p>Copyright (c) 2002 JSON.ORG</p> <p>Permission is hereby granted, free of charge, to any person obtaining a copy of this software and associated documentation files (the "Software"), to deal in the Software without restriction, including without limitation the rights to use, copy, modify, merge, publish, distribute, sublicense, and/or sell copies of the Software, and to permit persons to whom the Software is furnished to do so, subject to the following conditions:</p> <p>The above copyright notice and this permission notice shall be included in all copies or substantial portions of the Software.</p> <p>The Software shall be used for Good, not Evil.</p>



Component	License or acknowledgement
	<p>THE SOFTWARE IS PROVIDED "AS IS", WITHOUT WARRANTY OF ANY KIND, EXPRESS OR IMPLIED, INCLUDING BUT NOT LIMITED TO THE WARRANTIES OF MERCHANTABILITY, FITNESS FOR A PARTICULAR PURPOSE AND NONINFRINGEMENT. IN NO EVENT SHALL THE AUTHORS OR COPYRIGHT HOLDERS BE LIABLE FOR ANY CLAIM, DAMAGES OR OTHER LIABILITY, WHETHER IN AN ACTION OF CONTRACT, TORT OR OTHERWISE, ARISING FROM, OUT OF OR IN CONNECTION WITH THE SOFTWARE OR THE USE OR OTHER DEALINGS IN THE SOFTWARE.</p>
LibTomCrypt 1.17	LibTomCrypt 1.17 license
Log4Net 2.0.7	<p>Apache 2.0 license</p> <p>Copyright 2004-2017 The Apache Software Foundation</p> <p>This product includes software developed at</p> <p>The Apache Software Foundation (<a href="http://www.apache.org/">http://www.apache.org/</a>).</p>
LZMA 4.65	Public Domain
Microsoft Win32 TaskScheduler 2.5.26	<p>Copyright 2007 James Newton-King</p> <p>Permission is hereby granted, free of charge, to any person obtaining a copy of this software and associated documentation files (the "Software"), to deal in the Software without restriction, including without limitation the rights to use, copy, modify, merge, publish, distribute, sublicense, and/or sell copies of the Software, and to permit persons to whom the Software is furnished to do so, subject to the following conditions:</p> <p>The above copyright notice and this permission notice shall be included in all copies or substantial portions of the Software.</p> <p>THE SOFTWARE IS PROVIDED "AS IS", WITHOUT WARRANTY OF ANY KIND, EXPRESS OR IMPLIED, INCLUDING BUT NOT LIMITED TO THE WARRANTIES OF MERCHANTABILITY, FITNESS FOR A PARTICULAR PURPOSE AND NONINFRINGEMENT. IN NO EVENT SHALL THE AUTHORS OR COPYRIGHT HOLDERS BE LIABLE FOR ANY CLAIM, DAMAGES OR OTHER LIABILITY, WHETHER IN AN ACTION OF CONTRACT, TORT OR OTHERWISE, ARISING FROM, OUT OF OR IN CONNECTION WITH THE SOFTWARE OR THE USE OR OTHER DEALINGS IN THE SOFTWARE.</p>
Microsoft Windows Azure Storage 8.0	Apache License Version 2.0, January 2004
Newtonsoft.Json 9.0.1	<p>Copyright (c) 2007 James Newton-King</p> <p>Permission is hereby granted, free of charge, to any person obtaining a copy of this software and associated documentation files (the "Software"), to deal in the Software without restriction, including without limitation the rights to use, copy, modify, merge, publish, distribute, sublicense, and/or sell copies of the Software, and to permit persons to whom the Software is furnished to do so, subject to the following conditions:</p> <p>The above copyright notice and this permission notice shall be included in all copies or substantial portions of the Software.</p>

Component	License or acknowledgement
	<p>THE SOFTWARE IS PROVIDED "AS IS", WITHOUT WARRANTY OF ANY KIND, EXPRESS OR IMPLIED, INCLUDING BUT NOT LIMITED TO THE WARRANTIES OF MERCHANTABILITY, FITNESS FOR A PARTICULAR PURPOSE AND NONINFRINGEMENT. IN NO EVENT SHALL THE AUTHORS OR COPYRIGHT HOLDERS BE LIABLE FOR ANY CLAIM, DAMAGES OR OTHER LIABILITY, WHETHER IN AN ACTION OF CONTRACT, TORT OR OTHERWISE, ARISING FROM, OUT OF OR IN CONNECTION WITH THE SOFTWARE OR THE USE OR OTHER DEALINGS IN THE SOFTWARE.</p>
QuickLZ 1.5	QuickLZ Commercial License 1.0
SharpZipLib 0.85.5.452	<p>The library is released under the GPL with the following exception:</p> <p>Linking this library statically or dynamically with other modules is making a combined work based on this library. Thus, the terms and conditions of the GNU General Public License cover the whole combination.</p> <p>As a special exception, the copyright holders of this library give you permission to link this library with independent modules to produce an executable, regardless of the license terms of these independent modules, and to copy and distribute the resulting executable under terms of your choice, provided that you also meet, for each linked independent module, the terms and conditions of the license of that module. An independent module is a module which is not derived from or based on this library. If you modify this library, you may extend this exception to your version of the library, but you are not obligated to do so. If you do not wish to do so, delete this exception statement from your version.</p> <p>Note The exception is changed to reflect the latest GNU Classpath exception. Older versions of #ziplib did have another exception, but the new one is clearer and it doesn't break compatibility with the old one.</p> <p>Bottom line In plain English this means you can use this library in commercial closed-source applications.</p>
Task Scheduler Managed Wrapper 2.5.26	<p>Copyright (c) 2003-2010 David Hall</p> <p>Permission is hereby granted, free of charge, to any person obtaining a copy of this software and associated documentation files (the "Software"), to deal in the Software without restriction, including without limitation the rights to use, copy, modify, merge, publish, distribute, sublicense, and/or sell copies of the Software, and to permit persons to whom the Software is furnished to do so, subject to the following conditions:</p> <p>The above copyright notice and this permission notice shall be included in all copies or substantial portions of the Software.</p> <p>THE SOFTWARE IS PROVIDED "AS IS", WITHOUT WARRANTY OF ANY KIND, EXPRESS OR IMPLIED, INCLUDING BUT NOT LIMITED TO THE WARRANTIES OF MERCHANTABILITY, FITNESS FOR A PARTICULAR PURPOSE AND NONINFRINGEMENT. IN NO EVENT SHALL THE AUTHORS OR COPYRIGHT HOLDERS BE LIABLE FOR ANY CLAIM, DAMAGES OR OTHER LIABILITY, WHETHER IN AN ACTION OF CONTRACT, TORT OR OTHERWISE, ARISING FROM, OUT OF OR IN CONNECTION WITH THE SOFTWARE OR THE USE OR OTHER DEALINGS IN THE SOFTWARE.</p>

Component	License or acknowledgement
TimeSpan Helper Library 2.1.5	<p>Copyright (c) 2009, CodePlex Foundation All rights reserved.</p> <p>Redistribution and use in source and binary forms, with or without modification, are permitted provided that the following conditions are met:</p> <ul style="list-style-type: none"> <li>• Redistributions of source code must retain the above copyright notice, this list of conditions and the following disclaimer.</li> <li>• Redistributions in binary form must reproduce the above copyright notice, this list of conditions and the following disclaimer in the documentation and/or other materials provided with the distribution.</li> <li>• Neither the name of CodePlex Foundation nor the names of its contributors may be used to endorse or promote products derived from this software without specific prior written permission.</li> </ul> <p>THIS SOFTWARE IS PROVIDED BY THE COPYRIGHT HOLDERS AND CONTRIBUTORS "AS IS" AND ANY EXPRESS OR IMPLIED WARRANTIES, INCLUDING, BUT NOT LIMITED TO, THE IMPLIED WARRANTIES OF MERCHANTABILITY AND FITNESS FOR A PARTICULAR PURPOSE ARE DISCLAIMED. IN NO EVENT SHALL THE COPYRIGHT OWNER OR CONTRIBUTORS BE LIABLE FOR ANY DIRECT, INDIRECT, INCIDENTAL, SPECIAL, EXEMPLARY, OR CONSEQUENTIAL DAMAGES (INCLUDING, BUT NOT LIMITED TO, PROCUREMENT OF SUBSTITUTE GOODS OR SERVICES; LOSS OF USE, DATA, OR PROFITS; OR BUSINESS INTERRUPTION) HOWEVER CAUSED AND ON ANY THEORY OF LIABILITY, WHETHER IN CONTRACT, STRICT LIABILITY, OR TORT (INCLUDING NEGLIGENCE OR OTHERWISE) ARISING IN ANY WAY OUT OF THE USE OF THIS SOFTWARE, EVEN IF ADVISED OF THE POSSIBILITY OF SUCH DAMAGE.</p>
WinForms Group Controls 1.5.3	<p>This component is governed by the Apache License 2.0 (Apache)</p>
Wizard .NET Library 2.1.7	<p>Copyright (c) 2013 David Hall</p> <p>Permission is hereby granted, free of charge, to any person obtaining a copy of this software and associated documentation files (the "Software"), to deal in the Software without restriction, including without limitation the rights to use, copy, modify, merge, publish, distribute, sublicense, and/or sell copies of the Software, and to permit persons to whom the Software is furnished to do so, subject to the following conditions:</p> <p>The above copyright notice and this permission notice shall be included in all copies or substantial portions of the Software.</p> <p>THE SOFTWARE IS PROVIDED "AS IS", WITHOUT WARRANTY OF ANY KIND, EXPRESS OR IMPLIED, INCLUDING BUT NOT LIMITED TO THE WARRANTIES OF MERCHANTABILITY, FITNESS FOR A PARTICULAR PURPOSE AND NONINFRINGEMENT. IN NO EVENT SHALL THE AUTHORS OR COPYRIGHT HOLDERS BE LIABLE FOR ANY CLAIM, DAMAGES OR OTHER LIABILITY, WHETHER IN AN ACTION OF CONTRACT, TORT OR OTHERWISE, ARISING FROM, OUT OF OR IN CONNECTION WITH THE SOFTWARE OR THE USE OR OTHER DEALINGS IN THE SOFTWARE.</p>

**Component****License or acknowledgement**

---

zlib 1.2.8

/\* zlib.h -- interface of the 'zlib' general purpose compression library

version 1.2.7, May 2nd, 2012

Copyright (C) 1995-2012 Jean-loup Gailly and Mark Adler

This software is provided 'as-is', without any express or implied warranty. In no event will the authors be held liable for any damages arising from the use of this software.

Permission is granted to anyone to use this software for any purpose, including commercial applications, and to alter it and redistribute it freely, subject to the following restrictions:

1. The origin of this software must not be misrepresented; you must not claim that you wrote the original software. If you use this software in a product, an acknowledgment in the product documentation would be appreciated but is not required.

2. Altered source versions must be plainly marked as such, and must not be misrepresented as being the original software.

3. This notice may not be removed or altered from any source distribution.

Jean-loup Gailly Mark Adler

jloup@gzip.org madler@alumni.caltech.edu

▪

.msi 14

## A

activity logging 15

Activity Manager service account 10

## C

central repository 29

cluster installation 23

local 24

remote 24

command line (LiteSpeed)

remote install 17

silent install 21

configure activity logging 15

configure LiteSpeed server instances 15

## D

DCR See Double Click Restore

Double Click Restore

requirements 10

## E

exe backup files See Double Click Restore

## I

installation

cluster 23

local 14

remote 17

silent 21

installation requirements 8

installation scenario 12

installer files 14

instance configuration 15

## L

license 27

LiteSpeed architecture 5

## M

mass deployment 25

## P

permissions 10

instance configuration 15

remote deploy 17

privileges 10

## R

register LiteSpeed 27

register server instances 29

registration key See license

remote installation 17

cluster 24

standalone 17

remove LiteSpeed repositories 13

repositories 6

install 15

register 28

select 29

uninstall 13

upgrade 17

requirements 8

## S

server groups

create 31

server instances 29

silent installation 21

    cluster 24

    standalone 21

statistics

    collect in repositories 6

## T

trial key See license

trial mode See license

## U

uninstall LiteSpeed 13

uninstall repositories 13

upgrade license key See license

upgrade LiteSpeed 12

upgrade repository 17

upgrade scenario 12