

Quest® Client Profile Updating Utility 5.7.5

Administrator Guide



© 2017 Quest Software Inc. ALL RIGHTS RESERVED.

This guide contains proprietary information protected by copyright. The software described in this guide is furnished under a software license or nondisclosure agreement. This software may be used or copied only in accordance with the terms of the applicable agreement. No part of this guide may be reproduced or transmitted in any form or by any means, electronic or mechanical, including photocopying and recording for any purpose other than the purchaser's personal use without the written permission of Quest Software Inc.

The information in this document is provided in connection with Quest Software products. No license, express or implied, by estoppel or otherwise, to any intellectual property right is granted by this document or in connection with the sale of Quest Software products. EXCEPT AS SET FORTH IN THE TERMS AND CONDITIONS AS SPECIFIED IN THE LICENSE AGREEMENT FOR THIS PRODUCT, QUEST SOFTWARE ASSUMES NO LIABILITY WHATSOEVER AND DISCLAIMS ANY EXPRESS, IMPLIED OR STATUTORY WARRANTY RELATING TO ITS PRODUCTS INCLUDING, BUT NOT LIMITED TO, THE IMPLIED WARRANTY OF MERCHANTABILITY, FITNESS FOR A PARTICULAR PURPOSE, OR NON-INFRINGEMENT. IN NO EVENT SHALL QUEST SOFTWARE BE LIABLE FOR ANY DIRECT, INDIRECT, CONSEQUENTIAL, PUNITIVE, SPECIAL OR INCIDENTAL DAMAGES (INCLUDING, WITHOUT LIMITATION, DAMAGES FOR LOSS OF PROFITS, BUSINESS INTERRUPTION OR LOSS OF INFORMATION) ARISING OUT OF THE USE OR INABILITY TO USE THIS DOCUMENT, EVEN IF QUEST SOFTWARE HAS BEEN ADVISED OF THE POSSIBILITY OF SUCH DAMAGES. Quest Software makes no representations or warranties with respect to the accuracy or completeness of the contents of this document and reserves the right to make changes to specifications and product descriptions at any time without notice. Quest Software does not make any commitment to update the information contained in this document.

If you have any questions regarding your potential use of this material, contact:

Quest Software Inc.

Attn: LEGAL Dept

4 Polaris Way

Aliso Viejo, CA 92656

Refer to our Web site (<https://www.quest.com>) for regional and international office information.



Patents

Quest Software is proud of our advanced technology. Patents and pending patents may apply to this product. For the most current information about applicable patents for this product, please visit our website at <https://www.quest.com/legal>.

Trademarks

Quest, the Quest logo, and Join the Innovation are trademarks and registered trademarks of Quest Software Inc. For a complete list of Quest marks, visit <https://www.quest.com/legal/trademark-information.aspx>. All other trademarks and registered trademarks are property of their respective owners.

Legend

-  **CAUTION: A CAUTION icon indicates potential damage to hardware or loss of data if instructions are not followed.**
-  **IMPORTANT, NOTE, TIP, MOBILE, or VIDEO:** An information icon indicates supporting information.

Client Profile Updating Utility Administrator Guide
Updated - December, 2017
Version - 5.7.5

Contents

Overview	1
Terminology	1
Configuring and Running the Client Profile Updating Utility	1
Supported Configurations	2
Working with On Demand Migration for Email	3
What the Utility Updates	4
Modes	8
Update	8
Rollback	8
Cleanup	9
Usage	10
Typical Scenario	10
Encryption Modes	14
Using CPUU for Outlook 2016	14
Updating Microsoft Outlook Offline Profiles	15
Setting RPC over HTTP Access	16
Tenant to tenant migration scenario with domain name transfer	17
How to Limit Account Rights	20
Updating Resource Mailboxes	21
System Requirements	21
Using the Utility	22
SwitchResMB.ini Parameters	22
SwitchResMB.ini Example	27
Recommended Values for the CPUU.ini Parameters	30
SwitchResMB Exit Codes	30
Troubleshooting	32
Dealing with Slow Connection while Updating Profiles	32
Rolling Back Changes	33
Technical Reference	35
CPUU Parameters	35
Management Parameters	35
Configuration Parameters	38
Notification Format	42
Critical Functionalities	43
CPUU Return Codes	44
ClientProfileUpdatingUtility.exe Exit Codes	45

About us47
 Contacting Quest 47
 Technical support resources 47

Overview

During migration, Migration Manager for Exchange moves mailboxes from the source Microsoft Exchange server to the target Microsoft Exchange server. Before users can start working with the new target mailbox, their Microsoft Outlook profiles must also be updated.

The **Client Profile Updating Utility (CPUU; legacy name: EMWProf) 5.7.5** allows you to update these profiles automatically and transparently. The utility is used to update end-user Microsoft Outlook profiles settings, migrate additional features of user mailboxes and finally switch the profiles from the source to the target Exchange server once the user's mailbox is migrated and switched either manually or by the Migration Manager's Mail Agent.

CPUU supports Microsoft Outlook 2007/2010/2013/2016. It can be used in conjunction only with the following products:

- Migration Manager 8.13 or later
- On Demand Migration for Email

i **TIP:** For details how to use CPUU with ODME, see [Working with On Demand Migration for Email](#)

Terminology

Throughout this document, the following terms are used:

Source servers: the Exchange servers from which the email data is migrated

Target servers: the servers to which the email data is migrated

Console: the computer on which Migration Manager for Exchange is installed

Hereafter, unless a specific Exchange version is meant, "Exchange" denotes Exchange 2003, Exchange 2007, Exchange 2010, Exchange 2013, Exchange 2016 organizations, servers, mailboxes, etc.

Configuring and Running the Client Profile Updating Utility

To configure CPUU, create one configuration file (.INI) and three batch files for it using the **Client Profile Updating Utility Configuration** wizard. Include the resulting files in the logon script for the domain users. When a user logs on to the network, CPUU starts automatically on his or her workstation with the configuration saved in these files.

i | **NOTE:** If the target is Microsoft Office 365, you have to provide all users with their Office 365 passwords before CPUU switches Outlook profiles. Otherwise, the user cannot log on to his/her mailbox and get an access to his/her emails after the switch.

On a workstation, CPUU processes all the Microsoft Outlook user profiles that you selected to be processed when you set up your configuration files. A profile is processed whether or not it is set as the default for Microsoft Outlook. When updating Microsoft Outlook profiles, CPUU looks for a correspondence between the source and target recipients, using the custom attribute populated by the Directory Synchronization Agent.

! | **CAUTION:** CPUU stops Microsoft Outlook or other MAPI clients if these applications are running.

Offline Microsoft Outlook profiles are also updated in accordance with the settings you made when you specified in the INI file. CPUU can process either all offline profiles or only the profiles for the remote users whose mailboxes were added to Remote Users Collections. For information about Remote Users Collections, refer to the Migration Manager for Exchange documentation.

Take into account, the following conditions must be met for CPUU to work properly:

- CPUU should have an ability to connect to source and target Exchange server in Online mode. Therefore the online mode profile usage by users must not be disabled on Exchange 2007 and above or Office 365 . See more about that [here](#).
- For on-premises environments the RPCOverHTTP connections must be allowed because CPUU does not support MAPIOverHTTP connections for a target profiles. CPUU now supports MAPIoverHTTP for Office365 profiles only.

Supported Configurations

The Client Profile Updating Utility supports the vast majority of client computer configurations. Specifically, all mail clients and operating systems listed below are supported in any valid combinations.

However, only those Exchange Server and Outlook combinations are supported that are also supported by Microsoft. For a list of Outlook versions compatible with your Exchange Server, refer to the Exchange system requirements.

Mail Clients

- Microsoft Outlook 2007
- Microsoft Outlook 2010
- Microsoft Outlook 2013
- Microsoft Outlook 2016 (only in migrations with ODME or Migration Manager for Exchange 8.13 or later)

i | **IMPORTANT:** Processing profiles for Microsoft Virtual Desktop Infrastructure (VDI) environments is not supported.

i | **IMPORTANT:** CPUU does not support Outlook installed using application virtualization systems such as Microsoft App-V.

i | **TIP:** CPUU can switch profiles that contain multiple Exchange accounts - only the primary Exchange accounts are always switched. The primary Exchange account is an account that was first added to the profile (the primary account is not the same as the default account). This feature is only available in Microsoft Outlook 2010 and higher.

Operating Systems

- Microsoft Windows 7
- Microsoft Windows 8
- Microsoft Windows 8.1
- Microsoft Windows 10

Additional Software

The **Client Profile Updating Utility Configuration** wizard requires Microsoft .NET Framework 2.0 to be installed.

Working with On Demand Migration for Email

CPUU supports updating Outlook profiles for users whose mailboxes have been migrated using On Demand Migration for Email. For detailed information how to configure and use CPUU for this scenario and which limitations apply, see [Updating Outlook Client Profiles](#) in the *On Demand Migration for Email User Guide*.

What the Utility Updates

The Client Profile Updating Utility updates the profile settings, and also finalizes the mailbox migration by migrating additional features of user mailboxes.

i | **IMPORTANT:** If you use CPUU with On Demand Migration for Email, review [Working with On Demand Migration for Email](#) for the list of supported features and other information.

Additional features are specific custom settings of a particular user mailbox and its environment. Additional features include sets of services, groups of settings, Microsoft Outlook controls, and links to the mailbox objects, public folders, Global Address List, and so on.

Specifically, while updating a profile, the utility also updates the following additional features:

Feature	Details
Activities <i>Outlook 2007 only</i>	The Activities tab of the Contacts folder's Properties that allows configuring folder groups. <i>When processed:</i> CPUU updates settings on this tab for all contact folders. <i>When skipped:</i> The folder groups will be empty. <i>INI parameter name:</i> Activities
Additional Mailboxes	Shared Exchange mailboxes added in the user's Account Settings as <i>additional mailboxes</i> . <i>When processed:</i> CPUU updates links to additional mailboxes according to the location of additional mailbox owner (source or target Exchange). <i>When skipped:</i> The list of additional mailboxes will be empty. <i>INI parameter name:</i> AddBoxes
CONTAB	The Outlook Address Book is created automatically and contains the main Contacts folder and other added folders. These contacts are displayed in the Address Book dialog box when clicking Contacts in the Address Book list. <i>When processed:</i> CPUU updates links to all contact folders in Outlook Address Book <i>When skipped:</i> Outlook Address Book will become empty. <i>INI parameter name:</i> CONTAB
Contact Members	User's contacts and group contacts (also known as a distribution list in Outlook 2007) in all contact folders or groups. <i>When processed:</i> CPUU updates links to GAL users and distribution lists in personal contacts and personal distribution lists for all contact folders located in the mailbox and personal folders (.pst) file. <i>When skipped:</i> All contacts in contact folders will be source and some of distribution lists' members may be corrupted and lose links to existing objects. <i>INI parameter name:</i> ContactMembers

Feature	Details
Delegates	<p>Users granted permissions to receive items and respond on user's behalf specified in Account Settings Delegate Access.</p> <p><i>When processed:</i> CPUU updates list of delegates and delegation settings.</p> <p><i>When skipped:</i> Some of delegation settings may be lost.</p> <p><i>INI parameter name:</i> Delegates</p> <p>NOTE: If a user granted delegate access to other users or shared some folders with them, processing of the user's mailbox as well as mailboxes of users that are granted access need to be completed to re-establish access to the shared resources such as delegated calendars or shared folders.</p>
Folder Lists	<p>A list of recent folders where messages have been previously moved displayed when a message is about to be moved to a folder.</p> <p><i>When processed:</i> CPUU updates links to folders according to their location (source or target Exchange).</p> <p><i>When skipped:</i> The folders list will be empty.</p> <p><i>INI parameter name:</i> MoveToFolder</p>
Nick files	<p>Contact nicknames displayed when typing into the <i>To</i>, <i>CC</i> or <i>BCC</i> fields.</p> <p><i>When processed:</i> CPUU updates all links to users according to their location (source or target Exchange).</p> <p><i>When skipped:</i> The list will contain links to source users.</p> <p><i>INI parameter name:</i> Nicks</p>
Offline Address Book <i>Outlook 2007 only</i>	<p>Local copy of address book saved by Outlook to speed up address book access.</p> <p><i>When processed:</i> CPUU updates links found in offline address book from source to target ones.</p> <p><i>When skipped:</i> The offline address book will have source contacts instead of target.</p> <p><i>INI parameter name:</i> OfflineAB</p>
Other User's Folders	<p>List of folders owned by other users that have been opened by the current user.</p> <p><i>When processed:</i> CPUU updates links to other users' folders according to the location of those users (source or target Exchange).</p> <p><i>When skipped:</i> The list of folders will be empty.</p> <p><i>INI parameter name:</i> OtherUsersFolders</p>
Public FAV	<p>Public folders selected as favorite by the user and displayed in the Favorites folder of the Public Folders tree in Outlook.</p> <p><i>When processed:</i> CPUU updates links to public folders in the Favorites folder of the Public Folders tree. CPUU will not preserve public folder favorites if the mailbox was migrated in a Remote Users Collection and the Outlook profile uses an OST file.</p> <p><i>When skipped:</i> The list of favorite folders will be empty.</p> <p><i>INI parameter name:</i> PublicFav</p>
Rules	<p>User-defined rules that are run by Outlook or Exchange when receiving mail. Note that only enabled rules are processed.</p>

Feature	Details
	<p><i>When processed:</i> CPUU updates all links to users and folders found in enabled rules according to their location (source or target Exchange).</p> <p><i>When skipped:</i> Rules may become corrupted and no longer working.</p> <p><i>INI parameter name:</i> Rules</p>
Send/Receive Settings	<p>Message send and receive settings for accounts from the Outlook profile.</p> <p><i>When processed:</i> CPUU updates all send and receive settings.</p> <p><i>When skipped:</i> Some settings may be lost after switch.</p> <p><i>INI parameter name:</i> SRS</p>
Search Folders	<p>Search Folders created in Outlook.</p> <p><i>When processed:</i> Search folders are copied to the target mailbox with all their settings. Note that the target search folders are created as not active. To activate a folder, simply click it.</p> <p><i>When skipped:</i> All search folders will become corrupted and no longer working.</p> <p><i>INI parameter name:</i> SearchFolders</p>
Services	<p>Various profile properties including address book settings, folder for the most recently created message moving rule, and folder specified in the "After updating tracking information, move receipt to" option.</p> <p><i>When processed:</i> CPUU updates all links to folders and address books in the address book settings and other settings from source to target ones.</p> <p><i>When skipped:</i> Settings will be reset to default.</p> <p><i>INI parameter name:</i> Services</p>
Shortcuts	<p>Items on the Shortcuts pane.</p> <p><i>When processed:</i> CPUU updates links to folders from source to target ones.</p> <p><i>When skipped:</i> The list of shortcuts will be empty.</p> <p><i>INI parameter name:</i> Shortcuts</p>
User Names	<p>User-defined names for PST stores, additional mailboxes and specific folders like the Favorites folder and the All Public Folders folder.</p> <p><i>When processed:</i> CPUU updates names of folders with modified names.</p> <p><i>When skipped:</i> Folder names will be reset to default.</p> <p><i>INI parameter name:</i> UserNames</p>
Favorites	<p>The Favorites group located on the Mail pane.</p> <p><i>When processed:</i> CPUU preserves order of links to folders, and updates the links from source to target ones. Note that search folders and public folders favorites added to Favorites are not processed. Therefore, they will not appear after the switch.</p> <p><i>When skipped:</i> Most of links available on source will disappear after switch.</p> <p><i>INI parameter name:</i> Favorites</p>
Calendar Pane	<p>Items on the Calendar pane.</p> <p><i>When processed:</i> CPUU preserves calendar groups, order of links to calendars, selection of check boxes, and updates links to shared calendars according to the location of calendar</p>

Feature	Details
	<p>owner (source or target Exchange).</p> <p><i>When skipped:</i> Most of links available on source will disappear after switch.</p> <p><i>INI parameter name:</i> Calendar</p>
Contacts Pane	<p>Items on the Contacts pane.</p> <p><i>When processed:</i> CPUU preserves folder groups, order of links to contacts, and updates the links from source to target ones.</p> <p><i>When skipped:</i> Most of links available on source will disappear after switch.</p> <p><i>INI parameter name:</i> Contacts</p>
Tasks Pane	<p>Items on the Tasks pane.</p> <p><i>When processed:</i> CPUU preserves folder groups, order of links to tasks, and updates the links from source to target ones.</p> <p><i>When skipped:</i> Most of links available on source will disappear after switch.</p> <p><i>INI parameter name:</i> Tasks</p>
Notes Pane	<p>Items on the Notes pane.</p> <p><i>When processed:</i> CPUU preserves folder groups, order of links to notes, and updates the links from source to target ones.</p> <p><i>When skipped:</i> Most of links available on source will disappear after switch.</p> <p><i>INI parameter name:</i> Notes</p>
Journal Pane	<p>Items on the Journal pane.</p> <p><i>When processed:</i> CPUU preserves folder groups, order of links to journals, and updates the links from source to target ones.</p> <p><i>When skipped:</i> Most of links available on source will disappear after switch.</p> <p><i>INI parameter name:</i> Journal</p>

CPUU also clears the junk e-mail settings if the **Reset Outlook junk e-mail options for target mailbox** option is selected in the Configuration wizard. Otherwise, the settings will remain unchanged and may not work properly for the target mailbox.



IMPORTANT:

For the Favorites, Calendar, Contacts, Tasks, Notes and Journal features note the following:

- To process shared folders of other users in a profile, accounts under which CPUU connects to source and target mailboxes must have the **Full Control** permission on every mailbox in the source and target organizations, respectively.
- Processing of shared folders is not supported for Outlook 2007.
- To have shared folder contents available after switch, ensure that Autodiscover is configured for the target user.

Modes

The Client Profile Updating Utility can work in any of the following modes:

- Update Microsoft Outlook profiles
- Roll back changes made by CPUU to the Microsoft Outlook profiles
- Clean up information saved by CPUU during update

The **Client Profile Updating Utility Configuration** wizard creates three batch files and one configuration file:

- **CPUU_Update.bat**
- **CPUU_Rollback.bat**
- **CPUU_Cleanup.bat**
- **CPUU.ini**

All batch files contain commands that launch Client Profile Updating Utility in corresponding mode, and a specific script that detects whether Microsoft Outlook is 32-bit or 64-bit.

Running CPUU from the command line

You can run CPUU in particular mode from the command line using the appropriate command-line parameters. For details, see the [CPUU Parameters](#) topic.

Update

This option allows you to perform the direct profile switch without using a cache file. CPUU updates all the profile settings associated with the Exchange server. When updating Microsoft Outlook profiles, the utility looks for correspondence between the source and target recipients.

Rollback

The changes made by CPUU to the Microsoft Outlook profiles can be rolled back. This mode should be used for advanced troubleshooting in the following situations:

- If any issues occurred while processing the profiles by CPUU.
- If a user experiences problems while working with the new Exchange mailbox after the switch. In this case, first switch the mailbox back to the source Exchange server, and then roll back the changes made to its profiles.

Cleanup

All the auxiliary and backup information saved by CPUU during update can be cleaned up. This mode should be selected only after all the profiles have been successfully updated and no rollback is required. The rollback operation will be impossible after CPUU cleans up the backup information.

Usage

By default, the utility is installed in the **%Program Files%\Quest\Client Profile Updating Utility** folder.

The **Client Profile Updating Utility Configuration** wizard is always installed in the same folder as Client Profile Updating Utility.

It is recommended that all the preparations needed for updating client mailbox profiles be made before the mailboxes are switched to the target Exchange server by the Mail Agent.

For more details, see the related topics:

- [Typical Scenario](#)
- [Updating Microsoft Outlook Offline Profiles](#)
- [Setting RPC over HTTP Access](#)

Typical Scenario

It is recommended that all the preparations needed for updating client mailbox profiles be made before the mailboxes are switched to the target Exchange server by the Mail Agent. The typical procedure for switching the mailboxes and updating client profiles is described below:

To configure the Client Profile Updating Utility to process the Microsoft Outlook profiles, perform the following steps:

Step 1. Run the Client Profile Updating Utility Configuration wizard

1. On the **Welcome** step, select whether you want to create a new configuration file or load an existing one.
2. On the **Credentials** step, specify an account under which CPUU will log on to the source and target mailboxes. The following options are available on this step:

- **Use the currently logged in user**

The account of the user that log on to the workstation where CPUU will run.

NOTE: To process shared folders of other users in a profile shared folders, accounts under which CPUU connects to source and target mailboxes must have the **Full Control** permission on every mailbox in the source and target organizations, respectively.

- **Prompt for credentials**

Force CPUU to prompt the user for credentials to access the source and target mailboxes. In case you have linked mailbox in target you can select **Source credentials will be used for access to target mailbox** check box to avoid multiple CPUU credential requests.

- **Manually provide credentials**

This option lets you specify credential to access the source and target mailboxes, or two different credential: one for the source mailbox and another for the target mailbox (if trust relationships are not established between the source and target domains) in the INI file. It is recommended to select safe restricted options here. For more details refer to [Encryption Modes](#).

i **NOTE:** If the target is Microsoft Office 365, consider the following:

- If you use the **Administrator** account, this account must have the **Full Access** right for all processed mailboxes.
 - The **Use the currently logged in user** option is not supported. Instead, use the **Prompt for credentials** option to specify the user account under which CPUU will run. That also includes configurations with Single Sign-On (SSO) enabled, where sign on to Microsoft Office 365 under account of the logged-in user without prompting user credentials is not supported due to Microsoft Outlook restrictions. Microsoft Outlook cannot log on to the Office 365 mailbox without providing account credentials even if the federated user account is used. For more details, see the following article: <https://technet.microsoft.com/en-us/library/office-365-user-account-management.aspx>.
3. By default, CPUU process profiles that are configured with any MAPI service. But you can configure the product to process profiles with a particular MAPI service. To do that, on the **Services** step, select the **Update profiles with the default MAPI services and the following non-default MAPI services** option and add the MAPI services you want.
 4. On the **Features** step, select the profile features you want to be updated.
 5. Use the **Offline Profiles** step if you want CPUU to process offline Outlook profiles. Select whether the offline profiles should be processed always or only when the OST file can be kept. For more information about processing offline profiles, please refer to the [Updating Microsoft Outlook Offline Profiles](#) topic.
 6. If you want CPUU to display a verbose progress bar to user, select the **Display progress bar and warnings to users** check box on the **Notification** step. Note that the most critical warnings will be displayed even if the check box is not selected. For example, if you force CPUU to prompt for credentials, the dialog box for entering credentials will be displayed.
 7. Specify whether you want to receive e-mail notifications about the profile updating progress. On the **Notification** step, specify the following:
 - Select whether a notification should be send each time a profile is updated or only when CPUU could not update a profile.
 - Specify an e-mail address or addresses to which the notifications should be sent.
 - Select what information should be attached to the notification. You can select to attach a summary or a full log file. If you choose not to include any attachments, the minimum necessary information will still be included in the subject and body of the notification message (if you do not change their default templates). By default the subject and the body of the notification message contain the following information:

Subject: %R: Profile %P on computer %H

Body: The mail client profile %P for user %U on computer %H has been processed by Client Profile Updating Utility (CPUU), and was %R. The profile was processed at %T, %D. See the CPUU log file for details.

Variables stand for the following information:

Variable	Meaning
%R	UPDATED or NOT UPDATED
%P	Name of the profile
%H	Name of the computer where the profile was updated
%U	Name of the user whose profile was updated
%T	Time of the profile update
%D	Date of the profile update

For more information about the notification message format, refer to the [Technical Reference](#) topic.

- CPUU can communicate with the target Microsoft Exchange Server by using HTTP. On the **Network** step, specify the settings for HTTP connection. Also, the Client Profile Updating Utility checks availability of Exchange servers using the Check availability of Exchange servers with ping command option on this step. This option is selected by default. For more details, see Setting RPC over HTTP Access.

i **NOTE:** If you migrate to Microsoft Office 365, all HTTP settings are detected automatically, so you do not need to specify the settings for HTTP connection on the **Network** step.

If you migrate to Microsoft Exchange Server 2013 or higher, all HTTP settings are set to default for that Exchange Server version. If the settings were changed on your Exchange server, you should specify these settings in **CPUU.ini** manually.

- On the **Self Monitoring** step, you can specify troubleshooting and conflict prevention options.
- On the **Files** step, you can select the batch files you want to create (**CPUU_Update.bat**, **CPUU_Rollback.bat**, **CPUU_Cleanup.bat**) and specify the location of the configuration file (**CPUU.ini**) with the parameters you have supplied. These files will be used to start CPUU in order to update profiles, roll back changes made by CPUU and clean up information saved by CPUU.
- On the **Profiles** step, select the profiles to be updated by CPUU. You can choose to process all profiles, select particular profiles or update only the default profile. This step is disabled if **CPUU_Update.bat** and **CPUU_Rollback.bat** are not created on the **Files** step.
- On the **Logging** step, you can specify a name for the CPUU log file that will help you to find required information during troubleshooting.

This step is disabled if you do not create batch files for the utility on the **Files** step.

The default name of the log file is **CPUU_#h_#d_#t.log**, where:

- #h** - name of a computer
- #d** - date when the file was created
- #t** - time when the file was created

Alternatively, you can use the existing environment variable values to form the CPUU log file name. For example, you can add the logged-in username to the name of the log file by typing the following expression in the Log file box:

%username%_CPUU.log

The %username% parameter will be substituted with the real user name in whose security context CPUU starts.

It is also recommended that you configure CPUU to put log files to a network share where these files can be reached by administrators. In this case, use the UNC path syntax to specify the log file name, for example:

\\Servername\Sharename\%username%_CPUU.log

Note that users must be granted at least Write permission to put CPUU log files to the share.

i **IMPORTANT:** If a connection between user computer and network share is slow, then that can significantly increase profile processing time. For more details, see [Dealing with Slow Connection while Updating Profiles](#)

Adding Files to the Logon Script

- Add all the Client Profile Updating Utility files to the folder that is used by the logon script. All the files are located in the **%Program Files%\Quest\Client Profile Updating Utility** folder by default, as follows:
 - **ClientProfileUpdatingUtility.exe**
 - **ClientProfileUpdatingUtility_x64.exe**
 - **DlgHookHandler.dll**
 - **DlgHookHandler_x64.dll**
 - **dbghelp.dll**
 - **wldap32.dll**
 - An INI file created by the wizard (**CPUU.ini** by default)
 - A BAT file created by the wizard for updating profiles (**CPUU_Update.bat** by default)
- Include **CPUU_Update.bat** in the logon script.

Then, as soon as the mailboxes are switched and the users log on to their network, the Client Profile Updating Utility will start processing their profiles.

Step 2. Switch Mailboxes

As soon as CPUU is configured and ready to be started, you can start switching the source mailboxes to the target Exchange servers. For more information, please refer to the relevant Migration Manager for Exchange documentation.

Step 3. Update Profiles

As soon as the mailboxes are switched, CPUU will start updating user profiles. Wait while all profiles are updated.

Step 4. Perform Cleanup

After the migration has been completed, all profiles have been successfully updated, and you are absolutely sure that no rollback is required, you can run **CPUU_Cleanup.bat** that was created together with **CPUU_Update.bat**.

Encryption Modes

If you manually specify an account for profile update, the credentials are encrypted and stored in CPUU configuration file (**CPUU.ini**). To ensure that the stored credentials are not compromised, you can specify the conditions under which they can be decrypted:

- **Restricted to the current user and host** (intended for SwitchResMb)

Credentials can only be decrypted for profile processing only under logon sessions of the user who ran Configuration Wizard and created CPUU configuration file and only on the host where CPUU configuration file has been created.

i | **NOTE:** The only exception is a roaming user profile – in this case, the credentials can be decrypted for profile processing on all hosts where the roaming profile is valid.

- **Restricted to the current host** (intended for SwitchResMb)

Credentials can be decrypted for profile processing under logon session of any users but only on the host where CPUU configuration file has been created.

- **Unrestricted (not recommended, security risks should be reviewed)**

Credentials can be decrypted for profile processing without any restrictions by user or by host where CPUU configuration file has been created. While we have implemented the reliable encryption algorithm, it is theoretically possible to reverse-engineer CPUU code and use the knowledge to decrypt credentials data.

! | **CAUTION:** Never use this mode in production environment and never use it in conjunction with administrative credentials! It is recommended for isolated test lab.

i | **TIP:** Restricted to the current host is the most suitable encryption mode for simultaneous mailbox processing with SwitchResMB on same host under different logon sessions.

Using CPUU for Outlook 2016

Unlike processing profiles of previous Outlook versions, for Outlook 2016 profiles CPUU requires the Exchange Autodiscover service to be properly configured and run in your Exchange organization.

Also consider that by default Outlook in the first place uses Autodiscover service not from the domain specified in an email address but from the domain where a computer with Outlook is located. This behavior may prevent finding a corresponding mailbox at target in case you migrated the mailbox using Migration Manager for Exchange. To resolve this problem CPUU automatically disables Autodiscover SCP lookup for Outlook 2016 by adding the **ExcludeSCPLookup** value to the **Autodiscover** registry subkey on the computer where Outlook is installed. That ensures Outlook will use Autodiscover service from the target domain instead of domain where the computer is located.

i | **TIP:** For details on the **Autodiscover** registry subkey, see <https://support.microsoft.com/en-us/help/3211279/outlook-2016-implementation-of-autodiscover>.

i | **IMPORTANT:** The Autodiscover SCP lookup will be disabled for all Outlook profiles for the logged on user account.

If you migrated mailbox using On Demand Migration for Email then it is recommended to turn off that CPUU behavior. For that specify the `ExcludeSCPLookupNever` parameter in **Update.bat**. For more information on this parameter, see [Management Parameters](#).

Dealing with Same Source and Target SMTP Addresses

If a user that works with Outlook 2016 has same source and target SMTP addresses, Autodiscover always retrieves source mailbox even if user has already been switched. To process profile of such user, CPUU requires additional configuration as described below.

i | **NOTE:** In case you want to transfer the domain name from one Microsoft Office 365 tenant to another Microsoft Office 365 tenant see [Tenant to tenant migration scenario with domain name transfer](#) below.

Take the following steps to configure CPUU for processing profile of user with same source and target SMTP addresses:

1. Prepare two XML files, one containing source Autodiscover settings and the other containing target Autodiscover settings. For more details about these XML files and their format, see [here](#).
2. Specify paths to these XML files in the `AutodiscoverSrcFile` and `AutodiscoverTrgFile` [configuration parameters](#), respectively. It is recommended to use a local path because the content of the files will be uploaded every time that Microsoft Outlook starts.
3. In the `AutodiscoverDomainsFQDNs` [configuration parameter](#) list all user's and public folders SMTP domain names that are the same at source and at target.

After CPUU successfully finishes processing of the default profile or of all existing profiles if there is no default profile on a computer, local Autodiscover will point to target Autodiscover. Otherwise, it will point to source Autodiscover.

i | **IMPORTANT:** Take into account that after CPUU processing a computer is configured to use only local Autodiscover.

Updating Microsoft Outlook Offline Profiles

i | **IMPORTANT:** The information in this section is relevant only for migrations performed using legacy agents in Migration Manager for Exchange. For mailboxes, migrated in ODME or using MAgE in Migration Manager for Exchange, OST files cannot be preserved.

A widely-used Microsoft Outlook feature is offline access to a user's mailbox folders. The offline folders (OST) file is stored on a user's computer and keeps a local replica of the corresponding folders in the user's Exchange mailbox. In this document, users with offline folder (OST) files are referred to as remote users.

Because each OST file is associated with only one Exchange mailbox and cannot be used with any other mailbox, a remote user cannot continue to use the same OST file with the new mailbox after the migration. Therefore, the Migration Manager for Exchange Mail Agent recreates the target Exchange mailboxes so that the CPUU can keep the source mailbox OST file and assign it to the target mailbox profile.

The typical and recommended procedure for updating Microsoft Outlook offline profiles is as follows

1. Decide for which remote users the Microsoft Outlook offline profiles should be updated.
2. Group the mailboxes of those remote users into one or more Remote Users Collections.

i | **NOTE:** For more information about Remote Users Collections, refer to Migration Manager for Exchange User Guide.

3. Schedule the Remote Users Collection to be processed during the night or some other time when the users do not use their mailboxes.
4. Wait until the Mail Agent switches the Remote Users Collections. While processing a Remote Users Collection, the Mail Agent recreates the target Exchange mailboxes corresponding to the source mailboxes included in the collection and puts a hidden recreate message into each of the source mailboxes. This message will be then used by CPUU.
5. Run the **Client Profile Updating Utility Configuration** wizard.
6. Select the **Create a new configuration file** option on the **Welcome** page of the wizard to create a configuration batch file.
7. Specify the account under which CPUU will run.
8. Instruct CPUU to update offline profiles when possible to keep the OST files.
9. Supply other settings required for running CPUU. For more information, refer to the [Typical Scenario](#) topic.
10. Click **Finish**.
11. The wizard will create the BAT and INI files with the parameters you specified. These files will be used to start CPUU in order to update profiles. Include these files in the remote users' logon scripts.
12. CPUU will start updating offline profiles as soon as the mailboxes of the Remote Users Collection are switched to the target Exchange. To determine that the mailboxes are switched, CPUU uses the switch message. To determine that the mailboxes were successfully recreated and the OST file can be kept, CPUU uses the recreate message. Both messages are put to the mailbox by the Mail Agent.

i | **NOTE:** The switch message is a hidden message that contains the **Legacy Exchange DN** of the target Exchange server and of the user's new mailbox. If there is no switch message in the mailbox, CPUU will log off from the mailbox and will stop processing the profile.

When configuring CPUU, you can also select the following options for updating offline profiles:

1. **Never update offline profiles** – The offline profiles will be skipped and the users will have to recreate their profiles manually.
2. **Always update offline profiles** – If you select this option, you should be aware of the risk of data loss for those remote users whose target mailboxes were not prepared for migration by the Mail Agent when it processed them within the Remote Users Collections.

Setting RPC over HTTP Access

CPUU can configure target Outlook profiles to use RPC over HTTP access to Exchange. You can set the RPC over HTTP settings manually or use automatic detection of RPC over HTTP settings in CPUU. The automatic detection is only available if you work with Microsoft Office 365 or Microsoft Exchange Server 2013 (or higher).

i | **NOTE:** If you migrate to Microsoft Exchange Server 2013 or higher, RPC over HTTP settings are set to default automatically. If these settings were changed on your Exchange server, you should specify the RPC over HTTP settings manually in the CPUU configuration file.

To configure RPC over HTTP settings manually

1. In the **Client Profile Updating Utility Configuration** wizard, go to the **Network** step.
2. Select the **Configure profiles to connect to Microsoft Exchange using HTTP as follows** check box.
3. Specify the proxy server URL and other parameters.
4. Then, select **Try TCP/IP connection first, and use HTTP only if TCP/IP access fails** option if you want CPUU to try using RPC/TCP and set PRC/HTTP only if TCP access fails. If the option is not selected, CPUU will not try RPC/TCP access and will set RPC/HTTP access for the target mailbox in all cases.
5. Proceed with other options.

Alternatively you can edit the .INI file directly. The INI file section should have the following format:

```
[RPCOverHTTP]
ConnectUsingHTTP={0,1} [1]
ProxyServer=<string>
SSLOnly={0,1} [1]
MutualAuth={0,1} [0]
PrincipalName=<string> ["" ]
HTTPFirstOnFast={0,1} [1]
HTTPFirstOnSlow={0,1} [0]
AuthType={Basic, NTLM, Negotiate} [NTLM]
FirstLogonOverTCP={0,1} [1]
```

A common example of the **PrincipalName** parameter value is "**msstd:proddomain.local**".

The values in [] square brackets are the defaults; the values in the {} curly braces are the options; and <> triangular brackets provide the format information.

i | **NOTE:** Client Profile Updating Utility configures only the Outlook profile. You still have to deploy Microsoft Outlook and complete the steps required for its configuration.
For details about configuring Exchange 2003, see this Microsoft KB article: <http://support.microsoft.com/?id=833401>. For Exchange 2007 and later, refer to documentation on the Outlook Anywhere feature

Tenant to tenant migration scenario with domain name transfer

1. Use On Demand Migration for Email to migrate the content of mailboxes to the target tenant.
For detailed information on CPUU configuration, usage, and limitations, see [Updating Outlook Client](#)

[Profiles](#) in the *On Demand Migration for Email User Guide*.

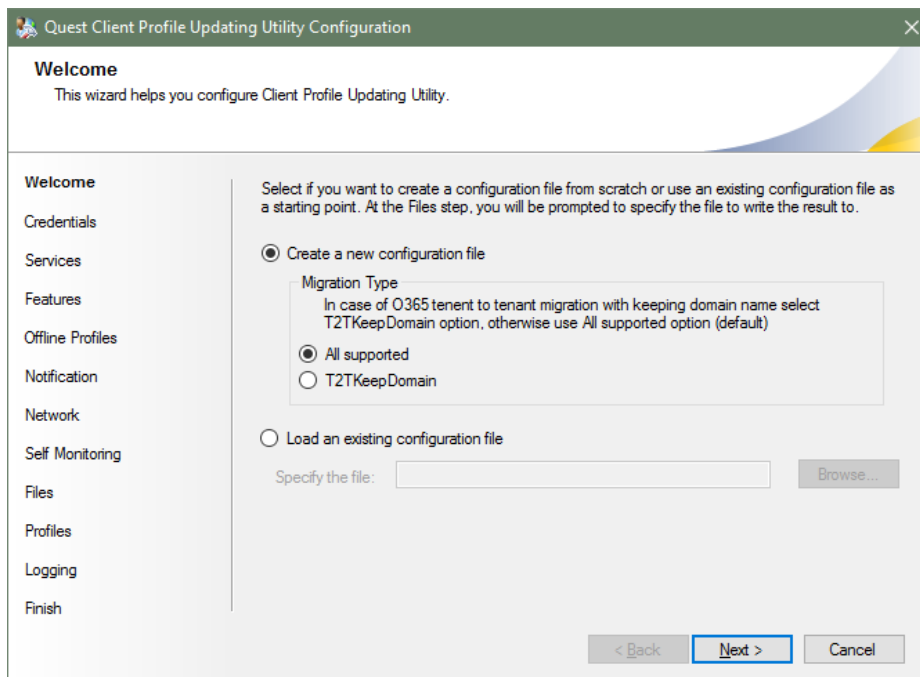
2. Create a temporary service mailbox in each source and target tenants and provide credentials for them. These accounts will be used to process profiles, for example fetching Autodiscover information from source and target tenants. The less rights these accounts have, the safer. For more details on limiting account rights, see [How to Limit Account Rights](#).
3. Use CPUU configuration wizard to create **CPUU.ini** file as described below.
4. Set the group policy for source domain users to start CPUU when user logs on to the computer.
5. Transfer the domain name to the target tenant. After this moment, the users cannot use their existing Outlook profiles without processing them by CPUU.

i | **NOTE:** After profile processing it might take some time for Outlook to resume the normal and expected behavior.

6. After all user profiles are switched to the target, remove the group policy set in Step 4.

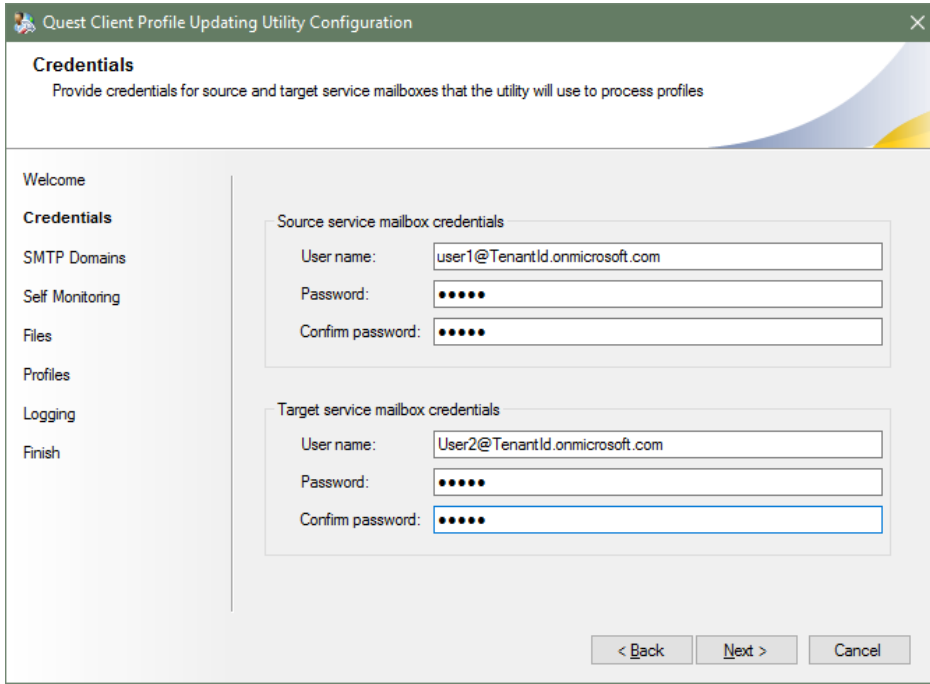
Creating CPUU.ini file

1. Start CPUU configuration wizard.
2. Select **T2TKeepDomain** migration type. Click **Next**.

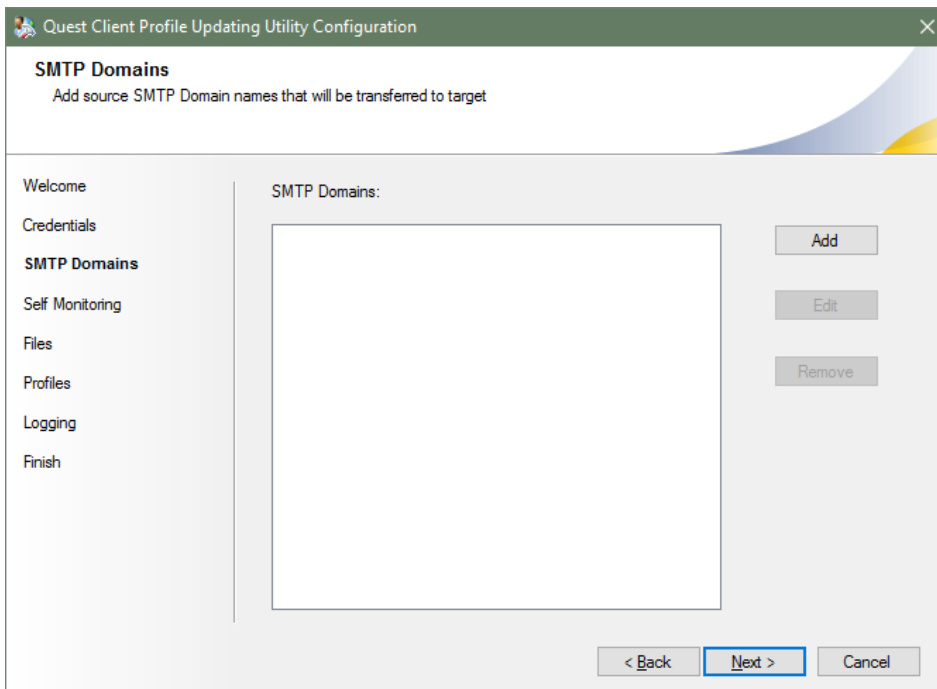


3. Provide credentials for service mailboxes.

i | **IMPORTANT:** User names should follow this syntax: <user_name>@TenantId.onmicrosoft.com.



4. Add domain names that will be kept after migration. Only profiles with email addresses from these domains will be processed by CPUU.



How to Limit Account Rights

Accounts for temporary service mailboxes does not require many access rights for CPUU to function properly. We recommend limiting the account rights using the following PowerShell commands.

i | **NOTE:** Redefine **\$user** variable with the account's user name or email address.

```
$credential = Get-Credential

$exchangeSession = New-PSSession -ConfigurationName Microsoft.Exchange -ConnectionUri
"https://outlook.office365.com/powershell-liveid/" -Credential $credential -
Authentication "Basic" -AllowRedirection

Import-PSSession $exchangeSession -DisableNameChecking

$user = "UserName"
```

Table 1: Limiting account rights

Limitation	Command
Disable access to remote PowerShell	<code>Set-User \$user -RemotePowerShellEnabled \$false</code>
Disable Exchange ActiveSync for the mailbox	<code>Set-CASMailbox \$user -ActiveSyncEnabled \$false</code>
Disable access to the mailbox by using Outlook on the web	<code>Set-CASMailbox \$user -OWAEnabled \$false</code>
Disable access to the mailbox by using Outlook on the web for devices	<code>Set-CASMailbox \$user -OWAforDevicesEnabled \$false</code>
Disable access to the mailbox by using POP3 clients	<code>Set-CASMailbox \$user -PopEnabled \$false</code>
Disable access to the mailbox by using IMAP4 clients	<code>Set-CASMailbox \$user -ImapEnabled \$false</code>
Disable access to the mailbox by using MAPI clients	<code>Set-CASMailbox \$user -MAPIEnabled \$false</code>

For more information see *Client access cmdlets in Exchange Online* article in Microsoft TechNet.

Updating Resource Mailboxes

Resource mailboxes are mailboxes that represent company resources you can book (such as conference rooms and equipment).

Since resource mailboxes are used only to book resources, normally no one logs on to them and therefore no Outlook profiles are created for them.

However, when migrating resource mailboxes, not all settings you configured in the source environment are migrated to the target by the agents. These settings can be updated by CPUU only after the mailbox is migrated. CPUU, however, requires Outlook profile to exist in order to update mailbox settings. If the number of resource mailboxes is large, it can be a challenge to create an Outlook profile for each resource mailbox manually.

The **Switch Resource Mailboxes** utility (**SwitchResMb.exe**) is a complementary utility to CPUU designed to help update resource mailboxes. With the help of **SwitchResMb.exe** you can update resource mailboxes in bulk without manually creating Outlook profiles. The **SwitchResMB.exe** utility creates temporary MAPI profiles for CPUU and then deletes them.

! **CAUTION:** It is recommended to switch and process the resource mailboxes after the user mailboxes are already switched (that is, when the users log on to the target mailboxes).

i **TIP:** In some cases Switch Resource Mailboxes can be also used for processing user mailboxes. For more information, see *Processing User Mailboxes with SwitchResMB and CPUU* in [Dealing with Slow Connection while Updating Profiles](#).

[System Requirements](#)
[Using the Utility](#)

System Requirements

SwitchResMb.exe is installed along with CPUU and located in the CPUU installation folder.

The account used to run the utility must have permissions to log on to the source mailboxes that are being switched.

The following files are required for SwitchResMb.exe to run:

- **ClientProfileUpdatingUtility.exe** – main CPUU executable file for 32-bit platforms.

! **CAUTION:** The Switch Resource Mailboxes utility cannot run together with 64-bit editions of Microsoft Outlook, so it does not work with ClientProfileUpdatingUtility_x64.exe.

- **CPUU.ini**– A file that contains configuration parameters for **ClientProfileUpdatingUtility.exe**.
- **DlgHookHandler.dll** – DLL file that is installed by the CPUU setup.
- A file that contains configuration parameters for **SwitchResMb.exe** and the list of resource mailboxes to be updated. This file must be created manually, as described in the [Using the Utility](#) topic.

Using the Utility

Before starting the Switch Resource Mailboxes utility, you must take the following steps:

1. Create a new configuration file in the CPUU installation folder and encrypt the password that you use to connect to the source domain controller. This account should be the same as account specified by `DCAccount` parameter in the configuration file. The encrypted password will be saved to the `DCPassword` parameter of configuration file. To do that, run the following command-line in the CPUU installation folder:

```
SwitchResMB.exe <configuration file name> <password for domain controller account>
```

! CAUTION: Password encryption is mandatory and must be completed before starting the utility.

2. Fill the configuration file according to your source and target environment. The format of the configuration file is described in [SwitchResMB.ini Parameters](#)
3. Create a configuration file for Client Profile Updating Utility (CPUU.ini) in the CPUU installation folder. It is recommended to edit **CPUU.ini** as described in the [Recommended Values for the CPUU.ini Parameters](#) topic.
4. Run the Switch Resource Mailboxes utility using the following command-line:

```
SwitchResMB.exe SwitchResMB.ini > PathToSwitchResMB.log
```

Parameters:

- **SwitchResMB.ini** – the path to the configuration file
- **PathToSwitchResMB.log** – The path to the log file that the utility will create. If this parameter is not specified, no log file will be created.

Only the configuration file parameter is required.

SwitchResMB.ini Parameters

The configuration file should contain the following sections and parameters:

Section [Settings]

This section is mandatory.

Parameter	Details
CPUUCmdLine	Command line for ClientProfileUpdatingUtility.exe . <i>Required:</i> Yes <i>Value:</i> string (can be empty)
SrcExchServer	The source Exchange server name. The server name that is specified in Microsoft Outlook during a profile creation. Its format depends on source Exchange Server version: <ul style="list-style-type: none">• Exchange 2010 or lower: FQDN format

Parameter	Details
	<ul style="list-style-type: none"> Exchange 2013: Mailbox GUID, @ symbol, and the domain part of the user's primary SMTP address (<Mailbox GUID>@<Domain Part>) <p><i>Required:</i> Yes <i>Value:</i> string (cannot be empty)</p>
LogonNetworkSecurityNegotiate	<p>Specifies whether source mailboxes use the Negotiate authentication method as a logon network security. The authentication method is specified in Microsoft Outlook during a profile creation.</p> <p><i>Required:</i> No <i>Value:</i> 1 or 0</p>
LogonNetworkSecurityWinnt	<p>Specifies whether source mailboxes use the Password authentication (NTLM) method as a logon network security. The authentication method is specified in Microsoft Outlook during a profile creation.</p> <p><i>Required:</i> No <i>Value:</i> 1 or 0</p>
LogonNetworkSecurityAnonymous	<p>Specifies whether source mailboxes use the Anonymous Authentication method as a logon network security. The authentication method is specified in Microsoft Outlook during a profile creation.</p> <p><i>Required:</i> No <i>Value:</i> 1 or 0</p>
LogonNetworkSecurityKerberos	<p>Specifies whether source mailboxes use the Kerberos Password authentication method as a logon network security. The authentication method is specified in Microsoft Outlook during a profile creation.</p> <p><i>Required:</i> No <i>Value:</i> 1 or 0</p>
LogonNetworkSecuritySmartCard	<p>Specifies whether source mailboxes use the Insert a smart card authentication method as a logon network security. The authentication method is specified in Microsoft Outlook during a profile creation.</p> <p><i>Required:</i> No <i>Value:</i> 1 or 0</p>

Section [AD]

This section is mandatory.

Parameter	Details
DCName	<p>The source domain controller name.</p> <p><i>Required:</i> Yes <i>Value:</i> String (cannot be empty)</p>
DCAccount	<p>The account used to connect to the source domain controller.</p>

Parameter	Details
	<i>Required:</i> Yes <i>Value:</i> String (cannot be empty)
DCPassword	The password used to connect to the source domain controller. <i>Required:</i> Yes <i>Value:</i> String (cannot be empty)

Section [RPCOverHTTP]

This section is mandatory in case migration is performed from an Exchange 2013 organization.

Parameter	Details
ConnectUsingHTTP	Specifies whether to use the RPC over HTTP setting for creation of source mailboxes. <i>Required:</i> Yes <i>Value:</i> 1 or 0
ProxyServer	Specifies source RPC proxy server which is specified in s in Microsoft Outlook during a profile creation. <i>Required:</i> Yes <i>Value:</i> String (cannot be empty)
PrincipalName	The principal name for proxy server which is specified in Exchange Proxy Settings in Microsoft Outlook during a profile creation. <i>Required:</i> Yes <i>Value:</i> String (can be empty)
SSLOnly	Specifies whether to use the Connect using SSL only option which is specified in Exchange Proxy Settings in Microsoft Outlook during a profile creation. <i>Required:</i> Yes <i>Value:</i> 1 or 0
MutualAuth	Specifies whether to use the Mutually authenticate the session when connecting with SSL option which is specified in Exchange Proxy Settings in Microsoft Outlook during a profile creation. <i>Required:</i> Yes <i>Value:</i> 1 or 0
HTTPFirstOnFast	Specifies whether to use the On fast networks, connect using HTTP first, then connect using TCP/IP option which is specified in Exchange Proxy Settings in Microsoft Outlook during a profile creation. <i>Required:</i> Yes <i>Value:</i> 1 or 0
HTTPFirstOnSlow	Specifies whether to use the On slow networks, connect using HTTP

Parameter	Details
	<p>first, then connect using TCP/IP option which is specified in Exchange Proxy Settings in Microsoft Outlook during a profile creation.</p> <p><i>Required:</i> Yes</p> <p><i>Value:</i> 1 or 0</p>
AuthNtlm	<p>Specifies whether to use the NTLM Authentication method for connecting to proxy server. It is specified in the page Exchange Proxy Settings in Microsoft Outlook during a profile creation.</p> <p><i>Required:</i> No (by default the utility uses NTLM authentication method)</p> <p><i>Value:</i> 1 or 0</p>
AuthBasic	<p>Specifies whether to use the Basic Authentication method for connecting to proxy server. It is specified in Exchange Proxy Settings in Microsoft Outlook during a profile creation.</p> <p><i>Required:</i> No (by default the utility uses NTLM authentication method)</p> <p><i>Value:</i> 1 or 0</p>
AuthNegotiate	<p>Specifies whether to use the Negotiate Authentication method for connecting to proxy server. It is specified in Exchange Proxy Settings in Microsoft Outlook during a profile creation.</p> <p><i>Required:</i> No (by default the utility uses NTLM authentication method)</p> <p><i>Value:</i> 1 or 0</p>

Section [SwitchMessage]

This section is optional. It is used for creating or recreating switch message for mailboxes.

Parameter	Details
RecreateSwitchMsg	<p>Specifies whether a Switch message needs to be recreated for each mailbox.</p> <p><i>Required:</i> No</p> <p><i>Value:</i> 1 or 0</p>
MigrationAgentType	<p>Indicates what version of Switch message should be created.</p> <p><i>Required:</i> Yes</p> <p><i>Value:</i> one of the following (cannot be empty)</p> <ul style="list-style-type: none"> • Legacy —If mailboxes are migrated by Migration Manager for Exchange Legacy agents. • Contemporary — if mailboxes are migrated by ODME or Migration Manager for Exchange MAgE.
TargetServer	<p>The target Exchange server name. Its format depends on target Exchange Server version:</p> <ul style="list-style-type: none"> • Exchange 2010 or lower: FQDN format

Parameter	Details
	<ul style="list-style-type: none"> Exchange 2013 or higher : Mailbox GUID, @ symbol, and the domain part of the user's primary SMTP address (<Mailbox GUID>@<Domain Part>) <p><i>Required:</i> Yes</p> <p><i>Value:</i> string (cannot be empty)</p>
IsMAPIEncryptionRequired	<p>Specifies whether the target Exchange organization explicitly requires encryption.</p> <p><i>Required:</i> Yes if the target Exchange server is not Microsoft Office 365. Otherwise, no.</p> <p><i>Value:</i> 1 or 0</p>
DomainName	<p>The name of the target domain.</p> <p><i>Required:</i> Yes if the target Exchange server is not Microsoft Office 365. Otherwise, no.</p> <p><i>Value:</i> string (can be empty)</p>
DomainControllers	<p>A semicolon-separated list of all domain controllers in the target domain.</p> <p><i>Required:</i> Yes if the target Exchange server is not Microsoft Office 365. Otherwise, no.</p> <p><i>Value:</i> string (can be empty)</p>
ExchangeServers	<p>A semicolon-separated list of all target Exchange servers.</p> <p><i>Required:</i> Yes if version of the switch message is v5 or v6. Otherwise, no.</p> <p><i>Value:</i> string (can be empty)</p>
TargetProxyServer	<p>The target proxy server name in the RPC over HTTP settings.</p> <p><i>Required:</i> Yes if the target Exchange server is not Microsoft Office 365. Otherwise, no.</p> <p><i>Value:</i> string (cannot be empty)</p>
Target	<p>Indicates type of target Exchange server.</p> <p><i>Required:</i> Yes if MigrationAgentType=Contemporary. Otherwise, no.</p> <p><i>Value:</i> one of the following (cannot be empty):</p> <ul style="list-style-type: none"> Exchange —if target server is Microsoft Exchange On-Premises O365— if migration target is Microsoft Office 365 tenant Mixed?
Target Version	<p>The target Exchange server version.</p> <p><i>Required:</i> Yes if the target Exchange server is not Microsoft Office 365. Otherwise, no.</p> <p><i>Value:</i> version number of target Exchange server. For example, 14.0.0.0 for Exchange 2010, 15.01.0.0 for Microsoft Office 365</p>

Section [Mailboxes]

This section is mandatory. It should contain a list of **legacyExchangeDN** attribute of source resource mailboxes which should be updated.

Section [MailboxesSMTP]

This section is optional and should be specified only for processing Microsoft Outlook 2016 profiles. It should contain a list of SMTP addresses of source resource mailboxes to be updated. If this section is empty or not specified, the Switch Resource Mailboxes utility looks for SMTP addresses for a list of mailboxes from section **[Mailboxes]** in Active Directory.

Section [TargetMailboxesSMTP]

This section is optional for processing Microsoft Outlook 2010/2013 and should only be specified for processing Microsoft Outlook 2016 profiles. It should contain a list of SMTP addresses of target mailboxes to be updated. If this section is empty or not specified, the Switch Resource Mailboxes utility looks for target SMTP address AD property for each mailbox from a list of mailboxes in section **[Mailboxes]** by querying Active Directory.

SwitchResMB.ini Example

Migration from Exchange Server 2013 to Exchange Server 2013 or higher

Below is an example of the INI file for Switch Resource Mailboxes utility if your target is Exchange Server 2010:

```
[Settings]
CPUUCmdLine=
SrcExchServer=Source
LogonNetworkSecurityNegotiate=1
[AD]
DCName=DC.source.domain
DCAccount=source\administrator
DCPassword=7F3A62CD00FC1DDDCD
[SwitchMessage]
Version=5.1
TargetServer=Target
IsMAPIEncryptionRequired=1
ExchangeServers=ex1.target.domain ex2.target.domain
DomainName= target.domain
DomainControllers=dc.target.domain1
[Mailboxes]
```

```
/o=SourceOrg/ou=Exchange Administrative Group  
(FYDIBOHF23SPDLT)/cn=Recipients/cn=Room-1
```

```
/o=SourceOrg/ou=Exchange Administrative Group  
(FYDIBOHF23SPDLT)/cn=Recipients/cn=Room-2
```

```
/o=SourceOrg/ou=Exchange Administrative Group  
(FYDIBOHF23SPDLT)/cn=Recipients/cn=Room-3
```

Migration to Exchange Server 2013 or higher

Below is an example of the INI file for Switch Resource Mailboxes utility if your target is Exchange Server 2013 or higher:

```
[Settings]  
CPUUCmdLine=  
SrcExchServer=Source  
LogonNetworkSecurityNegotiate=1  
[AD]  
DCName=DC.source.domain  
DCAccount=source\administrator  
DCPassword=7F3A62CD00FC1DDDCD  
[RPCOverHTTP]  
ConnectUsingHTTP=1  
ProxyServer=proxy.source.domain  
SSLOnly=0  
MutualAuth=0  
PrincipalName=  
HTTPFirstOnFast=1  
HTTPFirstOnSlow=0  
AuthNtlm=1  
[SwitchMessage]  
Version=7.1  
Target=Exchange  
TargetVersion=15.0.1076.9  
TargetServer=a966e7da-0339-4ae9-9ba7-a9d8016e93ee@target.domain  
TargetProxyServer=proxy.target.domain  
IsMAPIEncryptionRequired=1  
ExchangeServers=ex1.target.domain ex2.target.domain  
DomainName= target.domain
```



```

DomainControllers=dc.target.domain

[TargetMailboxesSMTP]
Room-1@target.domain
Room-2@target.domain
Room-3@target.domain

[Mailboxes]

/o=SourceOrg/ou=Exchange Administrative Group
(FYDIBOHF23SPDLT)/cn=Recipients/cn=Room-1

/o=SourceOrg/ou=Exchange Administrative Group
(FYDIBOHF23SPDLT)/cn=Recipients/cn=Room-2

/o=SourceOrg/ou=Exchange Administrative Group
(FYDIBOHF23SPDLT)/cn=Recipients/cn=Room-3

```

Migration to Microsoft Office 365

Below is an example of the INI file for Switch Resource Mailboxes utility if your target is Microsoft Office 365

```

[Settings]
CPUUCmdLine=
SrcExchServer=Source
LogonNetworkSecurityNegotiate=1

[AD]
DCName=DC.source.domain
DCAccount=source\administrator
DCPassword=7F3A62CD00FC1DDDCD

[RPCOverHTTP]
ConnectUsingHTTP=1
ProxyServer=proxy.source.domain
SSLOnly=0
MutualAuth=0
PrincipalName=
HTTPFirstOnFast=1
HTTPFirstOnSlow=0
AuthNtlm=1

[SwitchMessage]
MigrationAgentType=Contemporary
Target=O365

```

```

TargetVersion=16.0.1076.9
TargetServer=a966e7da-0339-4ae9-9ba7-a9d8016e93ee@target.domain
TargetProxyServer=proxy.target.domain

[TargetMailboxesSMTP]
Room-1@target.domain
Room-2@target.domain
Room-3@target.domain

[Mailboxes]

/o=SourceOrg/ou=Exchange Administrative Group
(FYDIBOHF23SPDLT)/cn=Recipients/cn=Room-1

/o=SourceOrg/ou=Exchange Administrative Group
(FYDIBOHF23SPDLT)/cn=Recipients/cn=Room-2

/o=SourceOrg/ou=Exchange Administrative Group
(FYDIBOHF23SPDLT)/cn=Recipients/cn=Room-3

```

Recommended Values for the CPUU.ini Parameters

It is recommended to edit the CPUU configuration file (**CPUU.ini**) before you start the Switch Resource Mailboxes utility as suggested below:

```

[Parameters]
Features= Delegates Rules
Silent=1

```

i **IMPORTANT:** When using CPUU in conjunction with Migration Manager for Exchange, there is no defined limit for the maximum number of features that can be processed by CPUU. If you want to process all mailbox features, do not specify a value for the **Features** parameter. The feature list from the example above is recommended only for resource mailboxes.

However, if you use CPUU in conjunction with ODME, specify `Skip=All`.

It is also recommended to use the **Silent=1** switch so that CPUU does not display any dialog boxes.

SwitchResMB Exit Codes

When the Switch Resource Mailboxes utility finishes, it sets the value of the errorlevel variable based on its exit status. The following bit mask can be used to retrieve Switch Resource Mailboxes utility completion status from the errorlevel code:

0	Processing successfully completed
1	Processing failed with errors
2	Incorrect command line parameters

4	Incorrect parameters in the INI configuration file
8	Unable to create one profile
16	Unable to create all profiles
32	Incorrect CPUU command line
64	Unable to start CPUU for updating profiles
128	Unable to start CPUU for cleanup

Troubleshooting

The following topics describe issues that may occur when working with the Client Profile Updating Utility, and how to resolve them:

- [Dealing with Slow Connection while Updating Profiles](#)
- [Rolling Back Changes](#)

Dealing with Slow Connection while Updating Profiles

When CPUU updates a user profile on a computer, it establishes a connection between the computer and an Exchange server where the corresponding user mailbox resides to get necessary data from the mailbox and update it accordingly. The problem is that if the user's computer has a slow connection to networks where that Exchange server is located (for instance, computer is connected to network through VPN or dial-up connection), those tasks will be performed slowly. That, in turn, affects overall CPUU performance so it may take several hours to update the user profile.

What you can do

You have the following options to achieve the best possible performance when connection between user's computer and network is slow:

1. Choose to process only necessary features

When planning to process user profiles on computers with slow connection to Exchange server, consider skipping features that are not necessary, or can be easily restored by user her- or himself.

As an example, the **Nicknames** (AutoNameCheck) feature take the longest to be updated over a slow connection.

You can configure CPUU to skip it in **CPUU.ini**:

```
Remove=Nicks
```

NOTE: For detailed information on supported features, see [What the Utility Updates](#)

2. Use SwitchResMB to process mailbox features

You can use SwitchResMB to process user mailbox features and then CPUU to finally switch the user profile. For details, see the topic below.

Processing user mailboxes with SwitchResMB and CPUU

For slow connections you can take an option to use [Switch Resource Mailboxes \(SwitchResMB.exe\)](#) utility installed on a computer in the same network where the Exchange server is located to process features and settings in the user mailbox. Then the corresponding user profile can be switched by CPUU locally on the user's computer. In this case, all [features](#) must be skipped when running CPUU.

This approach allows to achieve best performance, however the SwitchResMB utility has some limitations regarding supported mailbox features in comparison to CPUU.

i | **TIP:** For information how to use SwitchResMB, see [Updating Resource Mailboxes](#).

The following table denotes which CPUU features can be processed by SwitchResMB. Carefully review it to decide whether this approach is appropriate for you or not.

CPUU Feature	SwitchResMb with Outlook 2010, 2013, 2016
Activities	Not supported
Additional Mailboxes	
Contact Members	Limited support: contacts stored in PST file cannot be processed
CONTAB	Not supported
Delegates	Supported
Folder Lists	Not supported
Nick files	Supported
Offline Address Book	Not supported
Other User's Folders	
Public FAV	
Rules	Limited support: rules with links to items in PST file cannot be processed
Send/Receive Settings	Not supported
Search Folders	Limited support: search folders in PST file cannot be processed
Services	Not supported
Shortcuts	
User Names	
Favorites	Limited support: links to items in PST file cannot be processed
Calendar Pane	
Contacts Pane	
Tasks Pane	
Notes Pane	
Journal Pane	

If SwitchResMB uses Outlook 2007 to process mailboxes then more limitations apply. For instance, as Outlook 2007 does not supported shared folders, they will not work after switch even if user has Outlook 2010 or higher on her or his computer.

Rolling Back Changes

The changes made by CPUU in the Microsoft Outlook profiles can be rolled back if any issues occur during the update. You will likely need to undo changes made in one or several selected profiles. Unless you want to roll back changes made in all mailboxes' profiles, do not start the Client Profile Updating Utility from the logon script. Instead, copy the **ClientProfileUpdatingUtility.exe** file and a batch file to a user's workstation and start the utility manually from that workstation.

To undo the changes made by the Client Profile Updating Utility, run the **CPUU_Rollback.bat** file that was created by the **Client Profile Updating Utility Configuration** wizard.

! **CAUTION:** No rollback is possible if the Cleanup operation has been performed. For more information about Cleanup mode, refer to the [Modes](#) topic.

Technical Reference

This section covers technical reference information about Client Profile Updating Utility, as follows:

- [CPUU Parameters](#)
- [Notification Format](#)
- [Critical Functionalities](#)
- [CPUU Return Codes](#)

CPUU Parameters

Entering or reviewing command-line parameters is usually not necessary. The **Client Profile Updating Utility Configuration** wizard creates configuration files (**CPUU.ini** and **CPUU_Update.bat**) with the appropriate parameters for you.

You need to reference this section only in the following cases:

- You read about a parameter in the **Client Profile Updating Utility Configuration** wizard online help and want more information.
- You want to create the command line by yourself (though this is not recommended) and run the Client Profile Utility from the command line rather than using the configuration files generated by the **Client Profile Updating Utility Configuration** wizard.

Management Parameters

The following management parameters are used in **CPUU_Update.bat**:

Parameter	Description
-Profiles <ProfileName1> [ProfileName2] [ProfileName3] [...]	Makes the Client Profile Updating Utility process the specified profiles only. NOTE: If two versions of Outlook are installed side-by-side on the computer, CPUU processes profile from the newer version of Outlook.
-Undo <ProfileName1> [ProfileName2] [ProfileName3] [...]	Rolls back changes made to the specified profiles. Specify the names of the profiles you want to undo the changes in. If the utility is run with this parameter from a logon script, the changes will be rolled back on every workstation.

Parameter	Description
-UndoAll	Rolls back all changes made by the utility to all updated profiles. If the utility is run with this parameter from a logon script, the changes will be rolled back on every workstation.
-DefaultProfile	Default profiles can be updated with the -DefaultProfile parameter, without the need to look up the profile name.
-LeaveTemporaryProfile	Before updating a profile, CPUU checks that the target mailbox is available and accessible with current CPUU.ini settings by creating the temporary target profile and trying to logon to it. By default, the temporary profile will be deleted after that. If -LeaveTemporaryProfile is specified, temporary profile will remain. Temporary profile name is like the following: CPUU_{<random GUID value>}. -LeaveTemporaryProfile is useful if CPUU cannot access the target mailbox with current CPUU.ini settings. In this case, you can leave the temporary target profile, open it in the Mail Control Panel applet and check which of the profile settings are incorrect and determine what should be changed in CPUU.ini to force CPUU to set the correct settings for a target profile.
-UndoDefaultProfile	Default profiles can be rolled back with the -UndoDefaultProfile parameter, without the need to look up the profile name.
-Log <LogFile>	<p>Specifies the name and path to the log file. You can specify either the full path to the log file or only the file name, in which case the log will be written to the folder from which the utility is started. If this parameter is not specified, the log file will be created with the default name, CPUU.log.</p> <p>You can use the following additional parameters to add the client computer name and the current date and time:</p> <ul style="list-style-type: none"> #H – inserts client computer name #D – inserts the current date #T – inserts the current time <p>You can also use the existing environment variable values to form the CPUU log file name. For example, you can add the user name of the account currently logged on to the name of the log file by typing the following expression:</p> <p>%username%_CPUU.log</p> <p>The %username% parameter will be replaced with the real user name associated with the security context in which CPUU was started.</p>

Parameter	Description
	NOTE: If CPUU log files reside in a remote location, CPUU first writes all .log, .csv and crash dump files into the CPUULogs folder in the TEMP directory on the local computer and after CPUU completes its operations, the .log and .csv files are moved to the remote folder. Crash dump files are not moved by default. The maximum number of dump files in the CPUULogs folder is limited to 10.
-MoveDumpsToRemote	Enables moving of crash dump files to the CPUU log folder if this folder is located on the remote computer.
-MaxLocalDumps	Specifies the maximum number of dump files to be stored in the %TEMP%\CPUULogs folder on a local computer. The default value is <i>10</i> .
-LogWriteDirectly	CPUU writes all .log, .csv and crash dump files directly to the CPUU log folder if this folder is remote.
-Cleanup	Deletes all backup profiles and cleans up all auxiliary backup information. Please make sure that all profiles have been successfully updated and no rollback is required before running the utility with this parameter.
-INI <FileName>	Specifies the path to the INI file. By default, the file resides in the same directory as CPUU_Update.bat .
-ExcludeScpLookupNever	By default, CPUU disables Autodiscover SCP lookup when processing Outlook 2016 profiles as described in Using CPUU for Outlook 2016 . To turn off that behavior specify this parameter. In particular, it should be always specified when processing Outlook 2016 profile for a mailbox migrated using On Demand Migration for Email.
-AlwaysUseAutodiscoverFiles	Configures CPUU to always use Autodiscover XML files specified by the <code>AutodiscoverSrcFile</code> and <code>AutodiscoverTrgFile</code> configuration parameters , regardless of Outlook version. By default, CPUU uses local Autodiscover only when it is processing Outlook 2016 profiles and <code>AutodiscoverSrcFile</code> , <code>AutodiscoverTrgFile</code> <code>AutodiscoverDomainsFQDNs</code> configuration parameters are defined in CPUU.ini .
-NameTrgStoreAsSrc	This parameter configures CPUU to preserve a source store display name after switching profile to a target mailbox. It is useful in migrations from one Office 365 tenant to another using ODME in which target store by default has the <i>.onmicrosoft.com</i> domain suffix and you plan to change it to the source name after all mailboxes from the source tenant are migrated to the target tenant and then switched.
-?	Displays help information.

Configuration Parameters

The following configuration parameters are used in **CPUU.ini**:

Parameter	Description
Admin <Domain\User>	Allows the user to specify the administrative account to be used to work with Exchange mailboxes. This parameter can be used only together with the - Password parameter.
Password <EncryptedPassword>	Specifies the password for the Admin account. The password must be encrypted by the Client Profile Updating Utility Configuration wizard.
AdminTrg<Domain\User>; AdminTrg<User@email> - for Microsoft Office 365	Allows the user to specify the administrative account to log on to the target mailboxes. This parameter can be used only together with the PasswordTrg parameter. The parameter is helpful when no trust relationships are established between the source and target domains.
PasswordTrg <EncryptedPassword>	Specifies password for the AdminTrg account. The password must be encrypted by the Client Profile Updating Utility Configuration wizard.
AskCredentials	Makes the utility prompt for credentials to log on to the source server. If the specified credentials do not allow logon to the target server, the utility prompts for target server credentials also. If the parameter was used in update mode, CPUU will prompt for credentials automatically when the profile is cleaned up or rolled back.
AskSourceCredentialsOnly	Specifies that provided by user source credentials will be used for access to target linked mailboxes in case Prompt for credentials mode is selected (AskCredentials is set to 1). Possible values are 0 (default) and 1 . For more details see Typical Scenario .
AllowAdditionalServices <Svc1> [Svc2] [Svc3] [...]	Forces the utility to process the non-default service providers whose MAPI names are specified as the parameter values. To process all the existing services, specify the value <All> as the parameter. The services updated by default are: <ul style="list-style-type: none"> • Microsoft Exchange Server (MSEMS) • Personal Address Book (MSPST AB) Personal Folders (.PST) File (MSPST MS; MSUPST MS) • Outlook Address Book (CONTAB) • Microsoft LDAP Directory (EMABLT) • Internet Folders (INTERSTOR) • Internet E-mail (IMAIL)
Skip <Value1> [Value2] [Value3] [...]	Forces the utility to skip the specified functionalities. For more information, see the Using a Dial-Up Connection

Parameter	Description
	while Updating Profiles topic.
Features <Value1> [Value2] [Value3] [...]	Forces the utility to process only the specified features. This functionality cannot be used along with the Skip parameter.
Critical <Value1> [<Value2>] [<Value3>] [...]	Forces the utility to skip profiles for which the critical functionalities specified as the values of this parameter cannot be updated. As values of this parameter, you can specify such functionalities as Rules and CONTAB. A complete list of functionalities can be found in the Critical Functionalities topic.
Remove Nicks	Forces the utility to remove all nicknames from the profile. If the nickname functionality is also specified in the Critical key and errors occur during nickname removal, the update will automatically be rolled back.
RemoveJunkEmailMessages	Forces CPUU to remove all junk e-mail settings from the updated profile.
ProcessOfflineProfiles	Forces the utility to process offline profiles.
PublicFolderPrimarySmtAddress	<p>Specifies the primary hierarchy mailbox for the target public folders in the case of migration to Microsoft Exchange Server 2013 or higher.</p> <p>You can discover the primary hierarchy mailbox using the following PowerShell (EMS) cmdlet:</p> <pre>Get-Mailbox -PublicFolder Where-Object {\$_ .IsRootPublicFolderMailbox -eq "True"} fl PrimarySmtAddress</pre> <p>The primary hierarchy public folder address should be written in regular mailbox address format; for example:</p> <pre>[DomainCfg] PublicFolderPrimarySmtAddress=pf@target.com</pre>
PublicFolderPrimaryMailboxGuid	<p>Specifies GUID of primary hierarchy mailbox. Can be retrieved from tenant by means of the following request:</p> <pre>(Get-OrganizationConfig Select-Object - ExpandProperty RootPublicFolderMailbox).ToString()</pre>
KeepOST	Forces CPUU to associate the original source OST file with the target mailbox profile if the corresponding source mailbox was processed within a Remote Users Collection by the Mail Agent. Otherwise, this parameter is ignored.
BackupOST	Forces CPUU to create a backup copy of the original source OST file if the corresponding source mailbox was processed within a Remote Users Collection by the Mail Agent. Otherwise, this parameter is ignored.

Parameter	Description
CreateRegFileForOSTRecovery	Prevents the utility from creating the registry (REG) file used for restoring a lost link between OST file and a profile.
UseTargetOST	UseTargetOST is used only during rollback. This option tells Client Profile Updating Utility to keep the OST file for the target mailbox after rollback.
Silent	Prevents the utility from displaying any dialog boxes while updating profiles.
SkipPing	Specifies that the utility should not ping the target Exchange server to verify its availability. Always use this parameter when the target network has no RPC/TCP connectivity and relies only on HTTP.
WatchDog	Launches [1] or stops [0] the watchdog process (by default, this process starts together with CPUU). This process watches the CPUU hangs and stops the utility using the OpenStoreWait , FeatureWait , GlobalWait options. Then the watchdog process restarts CPUU.
StopProcesses	Watchdog stops all processes that are specified as the value for the StopProcesses parameter before it starts CPUU. The following processes are stopped by default: <ul style="list-style-type: none"> • Microsoft Communicator (Communicator.exe) • Microsoft Outlook (Outlook.exe) • Blackberry Desktop Software 6.x (Rim.Desktop.exe) • Blackberry Desktop Software (Legacy) (Desktopmanager.exe) • Google Calendar Sync (GoogleCalendarSync.exe)
Attempt [N]	Sets the maximum number of attempts to restart CPUU (by default, three times).
OpenStoreWait	Sets the maximum allowed wait period to open a store (in seconds).
FeatureWait	Sets the maximum allowed wait period for a feature to finish its operations (in seconds).
GlobalWait	Sets the maximum run time period for CPUU (in seconds).
[Notification]	In this section, you can force the utility to send a notification message about update results to the addresses specified in the file. The format of the section can be found in the Notification Format topic.
[RPCOverHTTP]	In this section, you can set RPC over HTTP in the target Outlook profile according to the INI file generated by the configuration wizard. For more details, see Setting RPC

Parameter	Description
ApprovedExchangeDomains	<p data-bbox="772 257 979 280">over HTTP Access.</p> <p data-bbox="772 313 1396 434">Specifies a list of domains of source Exchange servers where processed mailboxes are located. You can specify root domain names and then all corresponding child domain names will be implicitly approved.</p> <p data-bbox="772 450 1382 600">Please do not use semicolon {;}, coma {,}, or any other separators except space character when you specify the values for the ApprovedExchangeDomains parameter, for example: <code>ApprovedExchangeDomains=<domain name 1> <domain name 2> <domain name 3></code>.</p> <p data-bbox="772 616 1318 674">The following is an explanation of CPUU behavior depending on ApprovedExchangeDomains:</p> <ul data-bbox="826 696 1396 1496" style="list-style-type: none"> <li data-bbox="826 696 1374 817">• If ApprovedExchangeDomains is empty, and there is only one Exchange account in a profile, CPUU switches this Exchange account in the profile. <li data-bbox="826 840 1396 1025">• If ApprovedExchangeDomains is not empty, and there is only one Exchange account in a profile, CPUU checks that the Exchange account is allowed by ApprovedExchangeDomains and, if so, then switches this account. Otherwise, the account will be skipped. <li data-bbox="826 1048 1366 1294">• If ApprovedExchangeDomains is empty, and there are a few Exchange accounts in a profile, CPUU logs the following error: "Profile <profile name> contains multiple Exchange accounts". CPUU requires that you specify the ApprovedExchangeDomains parameter to determine if the primary account is allowed to switch. <li data-bbox="826 1317 1396 1496">• If ApprovedExchangeDomains is not empty, and there are a few Exchange accounts in a profile, CPUU checks that the primary Exchange account is allowed by ApprovedExchangeDomains and, if so, then switches the primary account and ignores the others.
AutodiscoverSrcFile	Specifies path to a source XML file for local Autodiscover. Note that path now can include environmental variables (e.g., <code>%temp%</code>).
AutodiscoverTrgFile	Specifies path to a target XML file for local Autodiscover. Note that path now can include environmental variables (e.g., <code>%temp%</code>).
AutodiscoverDomainsFQDNs	Specifies a whitespace-separated list all user's and

Parameter	Description
	public folders SMTP domain names that are the same at source and at target.
MigrationType	Specifies the type of Outlook profile processing. This parameter might take one of the following values: <ul style="list-style-type: none"> • Default: Standard Outlook profile processing, except for tenant to tenant migration with domain name transfer; • T2TKeepDomain: Tenant to tenant migration, keeping the source domain name.
T2TdomainNamesOfMailboxesAllowedToSwitch	The list of domain names to be transferred during tenant to tenant migration scenario (T2TKeepDomain value should be set.)
PublicFolderPrimaryMailboxGuid	Specifies GUID of primary mailbox. Can be retrieved from tenant by means of the following request: (Get-OrganizationConfig Select-Object -ExpandProperty RootPublicFolderMailbox).ToString()
AskSourceCredentialsOnly	Specifies that provided by user source credentials will be used for access to target linked mailboxes in case Prompt for credentials mode is selected (AskCredentials is set to 1). Possible values are 0 (default) and 1 . For more details see Typical Scenario .

Notification Format

The **Client Profile Updating Utility Configuration** wizard creates a section in the **CPUU.ini** file that contains the notification settings. You need to reference this section only if you want to create the command-line by yourself and receive notifications about CPUU activities.

Section Format

Here is an example of the **CPUU.ini** file section that stores notification settings:

```
[Admin notification]

SMTPAddress=address1@domain.com address2@domain.com

Priority=normal

Attach log=statistics

Notification=fail

Profile=current

Subject=%R: Profile %P on computer %H

Body=The mail client profile %P for user %U on computer %H has been processed by Client Profile Updating Utility (CPUU), and was %R. The profile was processed at %T, %D. See the CPUU log file for details.
```

Admin notification – The name of the section. Cannot be changed.

SMTPAddress – Specifies one or several SMTP addresses to which the notification will be sent.

Priority – Defines the priority of the notification.

Possible values: low, high, normal.

Attach log – Defines what should be attached to the notification message. Possible values:

- **none** – No attachment will be send with the notification.
- **all** – The full log will be attached to the notification.
- **statistics** – The statistics gathered from the log file will be attached to the notification.

Notification – Defines in what cases notification should be sent. Possible values:

- **success** – Notification will be sent if the profile has been successfully updated.
- **fail** – Notification will be sent if the profile has not been updated.
- **all** – Notification will be sent in any case.

Profile – Defines which profile should be used to send notifications.

- **default** – Notification will be sent via the default profile as soon as this profile is updated. This is the default value.
- **current** – Notification will be sent via the current profile as soon as this profile is updated.

Subject – Specifies the notification subject.

Body – Specifies the notification body.

Variables

The following variables can be used in the subject and body of the notification message:

`%r, %R UPDATED or NOT UPDATED`

`%u, %U User name (for Windows 9x, the Profile name parameter value is used)`

`%p, %P Profile name`

`%h, %H Computer name`

`%t, %T Time`

`%d, %D Date`

`%% %`

Critical Functionalities

If you run CPUU from the command line rather than using the configuration files configured by **Client Profile Updating Utility Configuration** wizard, you can force CPUU to skip profiles in which it cannot update the functionalities that you define as critical. For example, if it is critical that rules be updated, you can specify **Rules** as the value of the **-Critical** parameter in the INI file.

Below you will find the list of critical functionalities that can be specified as values for the **-Critical** parameter and the names of the appropriate Microsoft Outlook settings:

Value	Microsoft Outlook Setting
Activities	Activities
AddBoxes	Additional Mailboxes
CONTAB	Outlook Address Book
Delegates	Delegates
Rules	Rules
SRS	Send/Receive Settings
SearchFolders	Search Folders
Shortcuts	Shortcuts (for Microsoft Outlook)

Most of the functionalities listed here are described in the [What the Utility Updates](#) topic.

CPUU Return Codes

If errors occur during the profiles update, the corresponding return codes are recorded in the CSV file. The name of this file has the same format as the CPUU log file name (**CPUU_#h_#d_#t.csv**). The file contains the following data separated by tab character.

```
<profile name> <current status of the profile> <previous status of the profile>
```

The following table contains the CPUU return codes and its descriptions:

Error code	Error	Description
0	PROFILE_WAS_NOT_PROCESSED	Profile is not processed.
1	PROFILE_IS_BACKUP	Profile is a backup copy of the original profile.
2	PROFILE_ALREADY_UPDATED	Profile is already updated.
3	PROFILE_BACKUP_NOT_FOUND	Backup profile was not found. Cannot restore and update profile.
4	PROFILE_NOT_RESOLVED	Profile cannot be resolved and is being skipped.
5	PROFILE_NOT_EXCHANGE_SERVICE	Server name and/or mailbox DN is not specified for the Exchange service. Profile is being skipped.
6	PROFILE_IS_OFFLINE	Profile is being skipped, because offline profiles cannot be processed unless the ' ProcessOfflineProfiles ' parameter is specified with the 'On' value.
7	PROFILE_HAS_NO_SEREVER	No 'Microsoft Exchange Server' service is specified in this profile.
8	PROFILE_UNEXPECTED_	Profile contains unexpected service(s) and

Error code	Error	Description
	SERVICES	is being skipped.
9	PROFILE_FAILED_TO_CREATE_BACKUP	Cannot create a backup copy for this profile.
10	PROFILE_MODIFYING_OK	Profile was successfully updated.
11	PROFILE_MODIFYING_FAILED	Cannot update profile.
12	PROFILE_RESTORE_OK	Profile was successfully rolled back.
13	PROFILE_RESTORE_FAILED	Cannot roll back profile.
14	PROFILE_CLEANUP_OK	Profile was successfully cleaned.
15	PROFILE_CLEANUP_FAILED	Cannot clean up profile.
16	PROFILE_CLEANUP_CANCELED	Cleanup operation was canceled by the user.
17	PROFILE_IS_UNABLE_OPEN_DEFSTORE	Cannot open default message store.
18	PROFILE_IS_UNABLE_OPEN_MAILBOX_STORE	Cannot open mailbox message store.
19	PROFILE_HAS_UNSUPPORTED_AUTHENTICATION	Profile authentication type is not supported.
20	PROFILE_HAS_CFG_UI_LOCK	Profile is locked due to open properties dialog box.
21	PROFILE_IS_OFFLINE_AND_RC	Unexpected error occurred.
22	PROFILE_NOT_FREESPACE_FOR_BACKUPOST	Not enough disk space for the OST file backup.

ClientProfileUpdatingUtility.exe Exit Codes

When Client Profile Updating Utility finishes, it sets the value of the errorlevel variable based on its exit status. The following bit mask can be used to retrieve Client Profile Updating Utility completion status from the errorlevel code:

0	CPUU_CANNOT_START
1	CPUU_SUCCESS
2	CPUU_NO_SWITCH_MSG
4	CPUU_SWITCH_ERR
8	CPUU_USER_ABORT
16	CPUU_GLOBAL_ERR
32	CPUU_CRASH
64	CPUU_FAILED_TO_WRITE_LOG
128	CPUU_FAILED_TO_CREATE_TMP_DIR

256 CPUU_FAILED_TO_COPY_LOCALLOG_TO_REMOTE_SHARE
 512 CPUU_INVALID_SWITCH_MSG

i **NOTE:** CPUU returns CPUU_CRASH if the application crashes.
 If you stop the CPUU process by using Task Manager, you receive the CPUU_SUCCESS return code.

The following table lists the errorlevel flags that can be set for each mode Client Profile Updating Utility runs in:

Status	Return Code (errorlevel)
Exit after running in Update mode.	CPUU_CANNOT_START—Nothing to update. CPUU_SUCCESS—One or more profiles were updated. CPUU_NO_SWITCH_MSG—No switch message was found for one or more profiles. CPUU_SWITCH_ERR—Update failed for one or more profiles. CPUU_GLOBAL_ERR—Update failed. CPUU_USER_ABORT—Update was aborted by the user.
Exit after running in Undo mode.	CPUU_CANNOT_START—Nothing to undo. CPUU_SUCCESS—One or more profiles were un-done. CPUU_SWITCH_ERR—Undo failed for one or more profiles.
Exit after running in Cleanup mode.	CPUU_CANNOT_START—Nothing to clean up. CPUU_SUCCESS—One or more profiles were cleaned up. CPUU_USER_ABORT—Cleanup was aborted by the user. CPUU_GLOBAL_ERR—Cleanup failed.

We are more than just a name

We are on a quest to make your information technology work harder for you. That is why we build community-driven software solutions that help you spend less time on IT administration and more time on business innovation. We help you modernize your data center, get you to the cloud quicker and provide the expertise, security and accessibility you need to grow your data-driven business. Combined with Quest's invitation to the global community to be a part of its innovation, and our firm commitment to ensuring customer satisfaction, we continue to deliver solutions that have a real impact on our customers today and leave a legacy we are proud of. We are challenging the status quo by transforming into a new software company. And as your partner, we work tirelessly to make sure your information technology is designed for you and by you. This is our mission, and we are in this together. Welcome to a new Quest. You are invited to Join the Innovation™.

Our brand, our vision. Together.

Our logo reflects our story: innovation, community and support. An important part of this story begins with the letter Q. It is a perfect circle, representing our commitment to technological precision and strength. The space in the Q itself symbolizes our need to add the missing piece — you — to the community, to the new Quest.

Contacting Quest

For sales or other inquiries, visit www.quest.com/contact.

Technical support resources

Technical support is available to Quest customers with a valid maintenance contract and customers who have trial versions. You can access the Quest Support Portal at <https://support.quest.com>.

The Support Portal provides self-help tools you can use to solve problems quickly and independently, 24 hours a day, 365 days a year. The Support Portal enables you to:

- Submit and manage a Service Request
- View Knowledge Base articles
- Sign up for product notifications
- Download software and technical documentation
- View how-to-videos
- Engage in community discussions
- Chat with support engineers online
- View services to assist you with your product